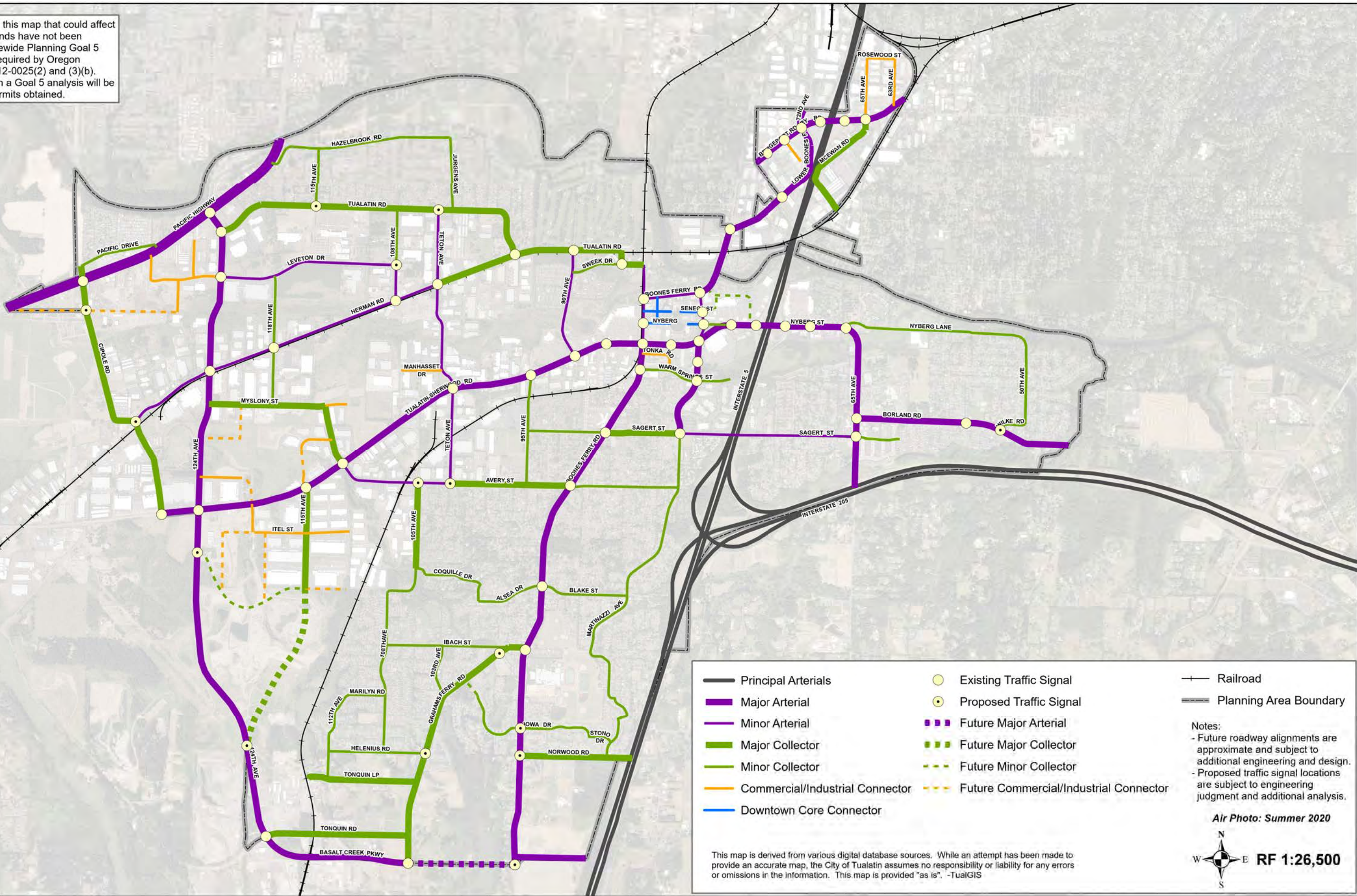


Map 8-1: Functional Classification and Traffic Signal Plan

Exhibit 3 - PMA 25-0001



The projects embodied in this map that could affect rivers, streams and wetlands have not been analyzed in terms of Statewide Planning Goal 5 (Natural Resources) as required by Oregon Administrative Rule 660-12-0025(2) and (3)(b). Thus, prior to construction a Goal 5 analysis will be completed and proper permits obtained.

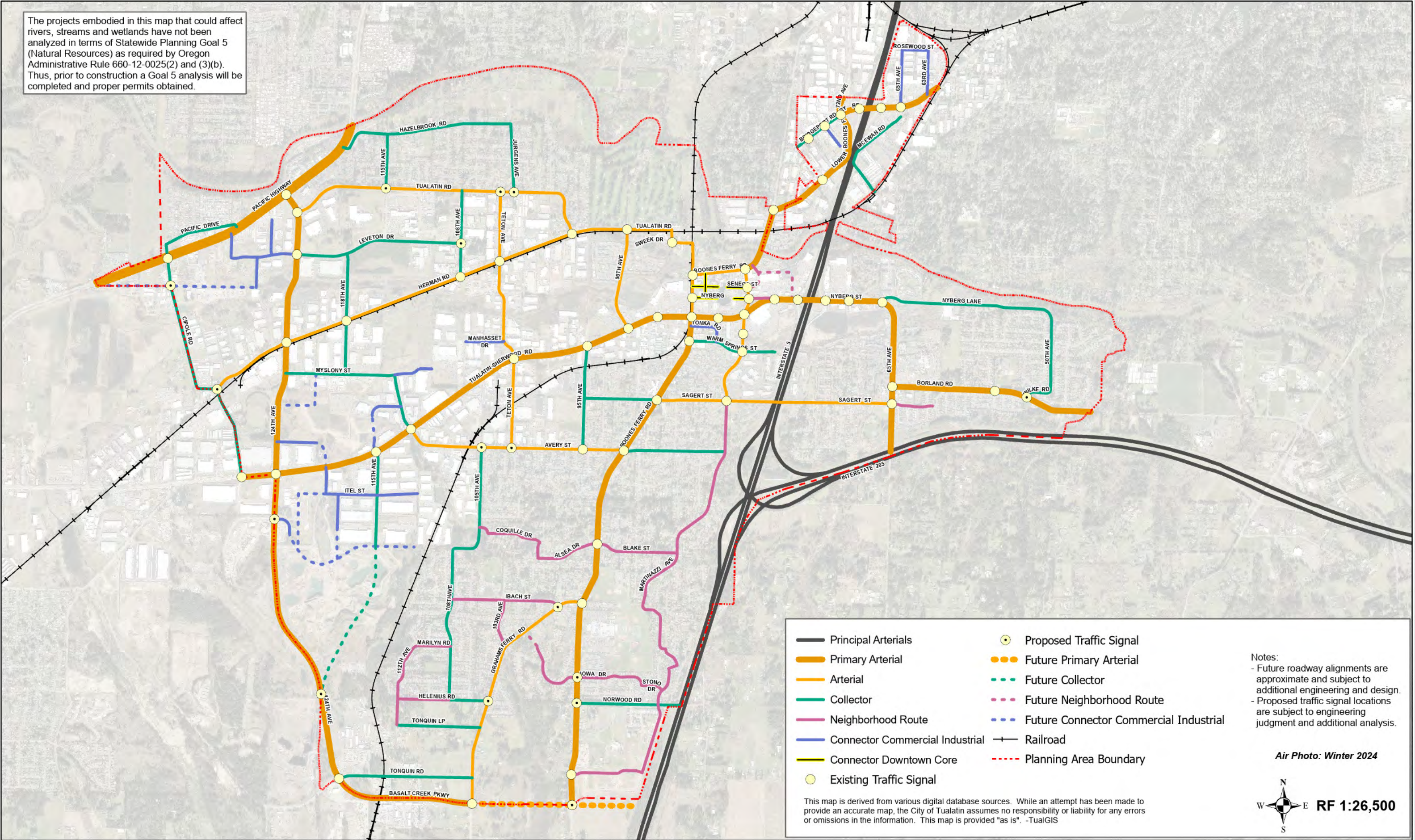


Map 8-1: Functional Classification and Traffic Signal Plan

Exhibit 3 - PMA 25-0001
PROPOSED



The projects embodied in this map that could affect rivers, streams and wetlands have not been analyzed in terms of Statewide Planning Goal 5 (Natural Resources) as required by Oregon Administrative Rule 660-12-0025(2) and (3)(b). Thus, prior to construction a Goal 5 analysis will be completed and proper permits obtained.



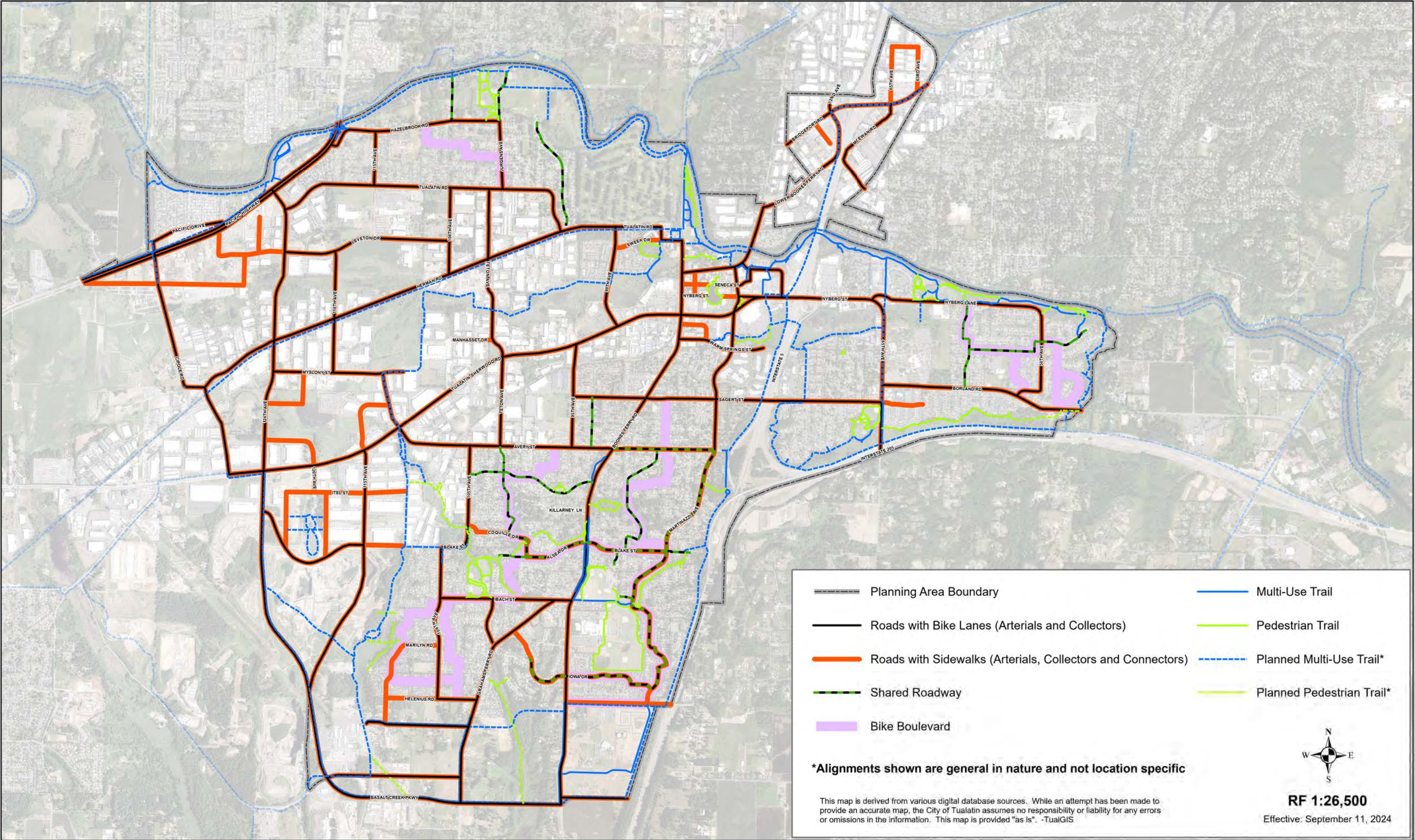
- | | |
|-----------------------------------|--|
| — Principal Arterials | ● Proposed Traffic Signal |
| — Primary Arterial | — Future Primary Arterial |
| — Arterial | — Future Collector |
| — Collector | — Future Neighborhood Route |
| — Neighborhood Route | — Future Connector Commercial Industrial |
| — Connector Commercial Industrial | — Railroad |
| — Connector Downtown Core | — Planning Area Boundary |
| ● Existing Traffic Signal | |

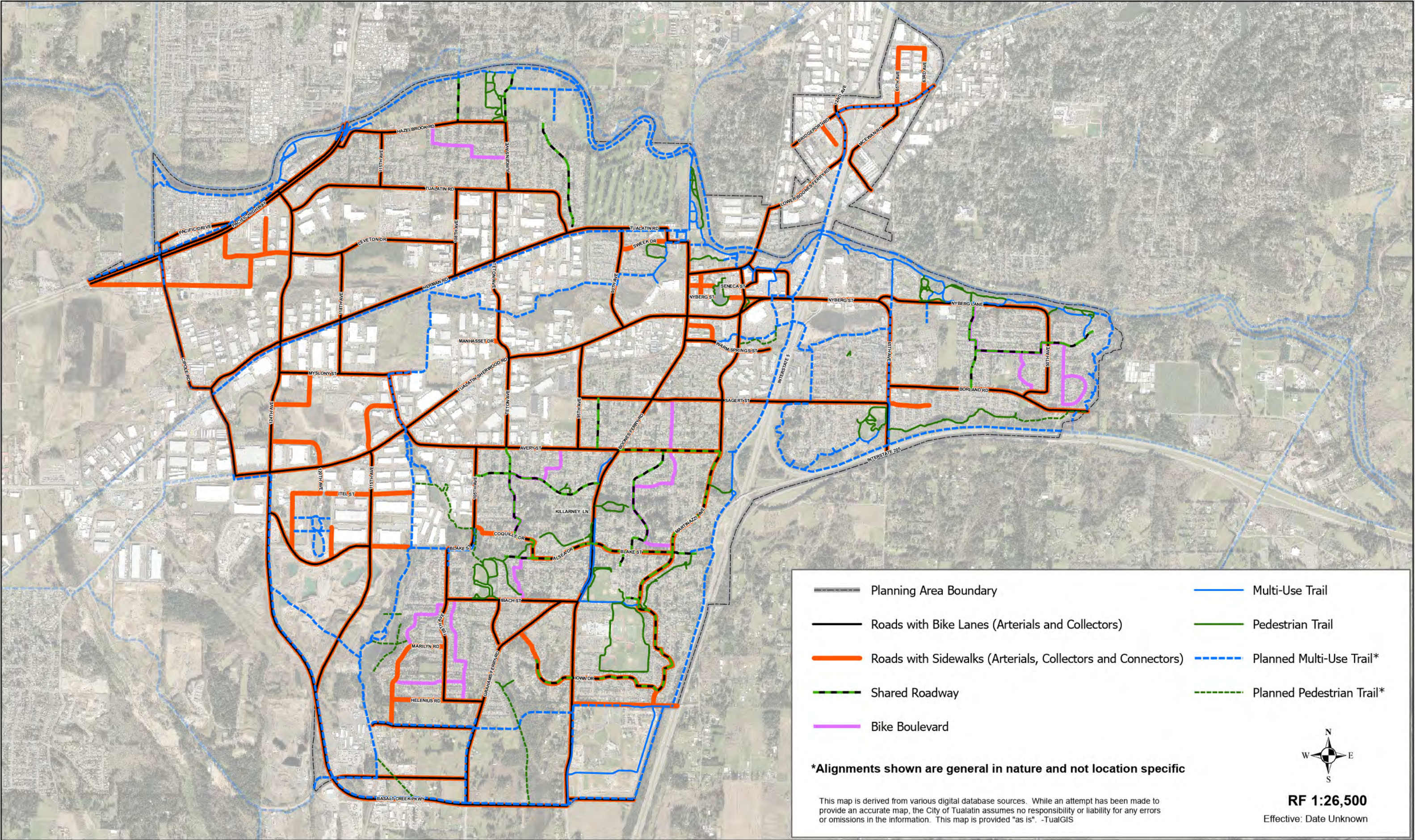
Notes:
- Future roadway alignments are approximate and subject to additional engineering and design.
- Proposed traffic signal locations are subject to engineering judgment and additional analysis.

Air Photo: Winter 2024



This map is derived from various digital database sources. While an attempt has been made to provide an accurate map, the City of Tualatin assumes no responsibility or liability for any errors or omissions in the information. This map is provided "as is". -TualGIS





- | | |
|---|---------------------------|
| Planning Area Boundary | Multi-Use Trail |
| Roads with Bike Lanes (Arterials and Collectors) | Pedestrian Trail |
| Roads with Sidewalks (Arterials, Collectors and Connectors) | Planned Multi-Use Trail* |
| Shared Roadway | Planned Pedestrian Trail* |
| Bike Boulevard | |

*Alignments shown are general in nature and not location specific

This map is derived from various digital database sources. While an attempt has been made to provide an accurate map, the City of Tualatin assumes no responsibility or liability for any errors or omissions in the information. This map is provided "as is". -TualGIS



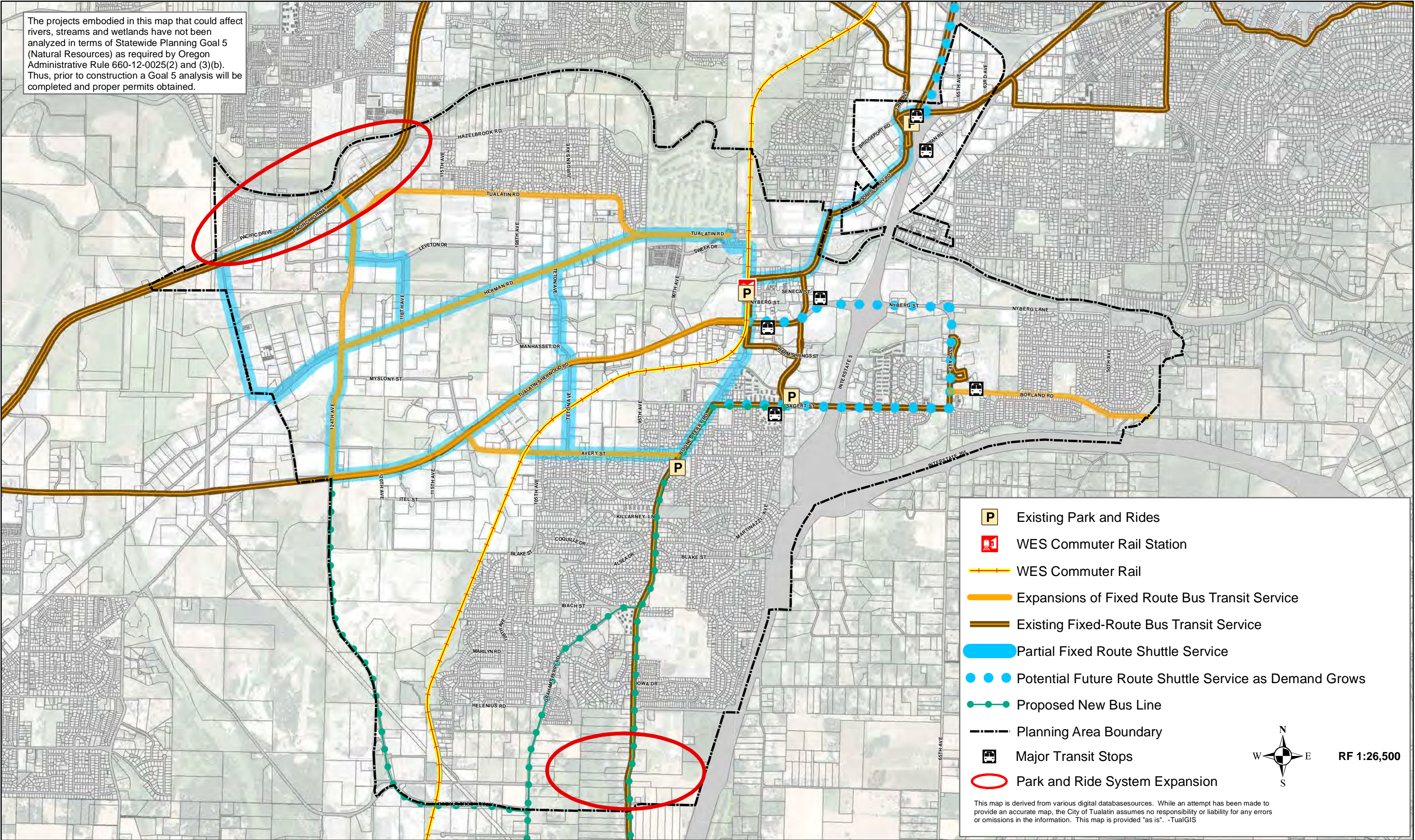
RF 1:26,500
Effective: Date Unknown

Map 8-5: Tualatin Transit Plan

Exhibit 3 - PMA 25-0001



The projects embodied in this map that could affect rivers, streams and wetlands have not been analyzed in terms of Statewide Planning Goal 5 (Natural Resources) as required by Oregon Administrative Rule 660-12-0025(2) and (3)(b). Thus, prior to construction a Goal 5 analysis will be completed and proper permits obtained.



- Existing Park and Rides
- WES Commuter Rail Station
- WES Commuter Rail
- Expansions of Fixed Route Bus Transit Service
- Existing Fixed-Route Bus Transit Service
- Partial Fixed Route Shuttle Service
- Potential Future Route Shuttle Service as Demand Grows
- Proposed New Bus Line
- Planning Area Boundary
- Major Transit Stops
- Park and Ride System Expansion



RF 1:26,500

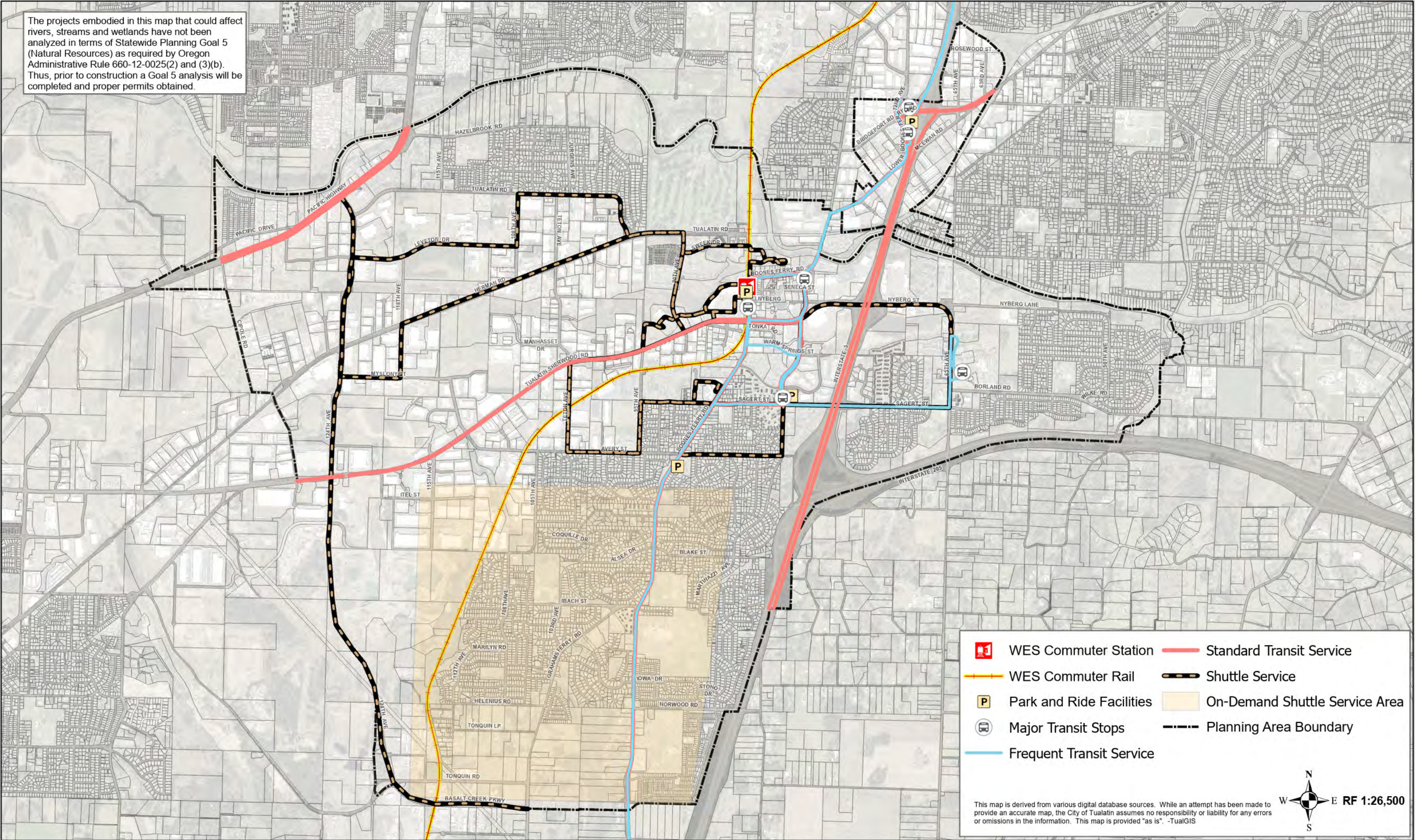
This map is derived from various digital databasesources. While an attempt has been made to provide an accurate map, the City of Tualatin assumes no responsibility or liability for any errors or omissions in the information. This map is provided "as is". -TualGIS

Map 8-5: Tualatin Transit Plan

Exhibit 3 - PMA 25-0001
PROPOSED



The projects embodied in this map that could affect rivers, streams and wetlands have not been analyzed in terms of Statewide Planning Goal 5 (Natural Resources) as required by Oregon Administrative Rule 660-12-0025(2) and (3)(b). Thus, prior to construction a Goal 5 analysis will be completed and proper permits obtained.



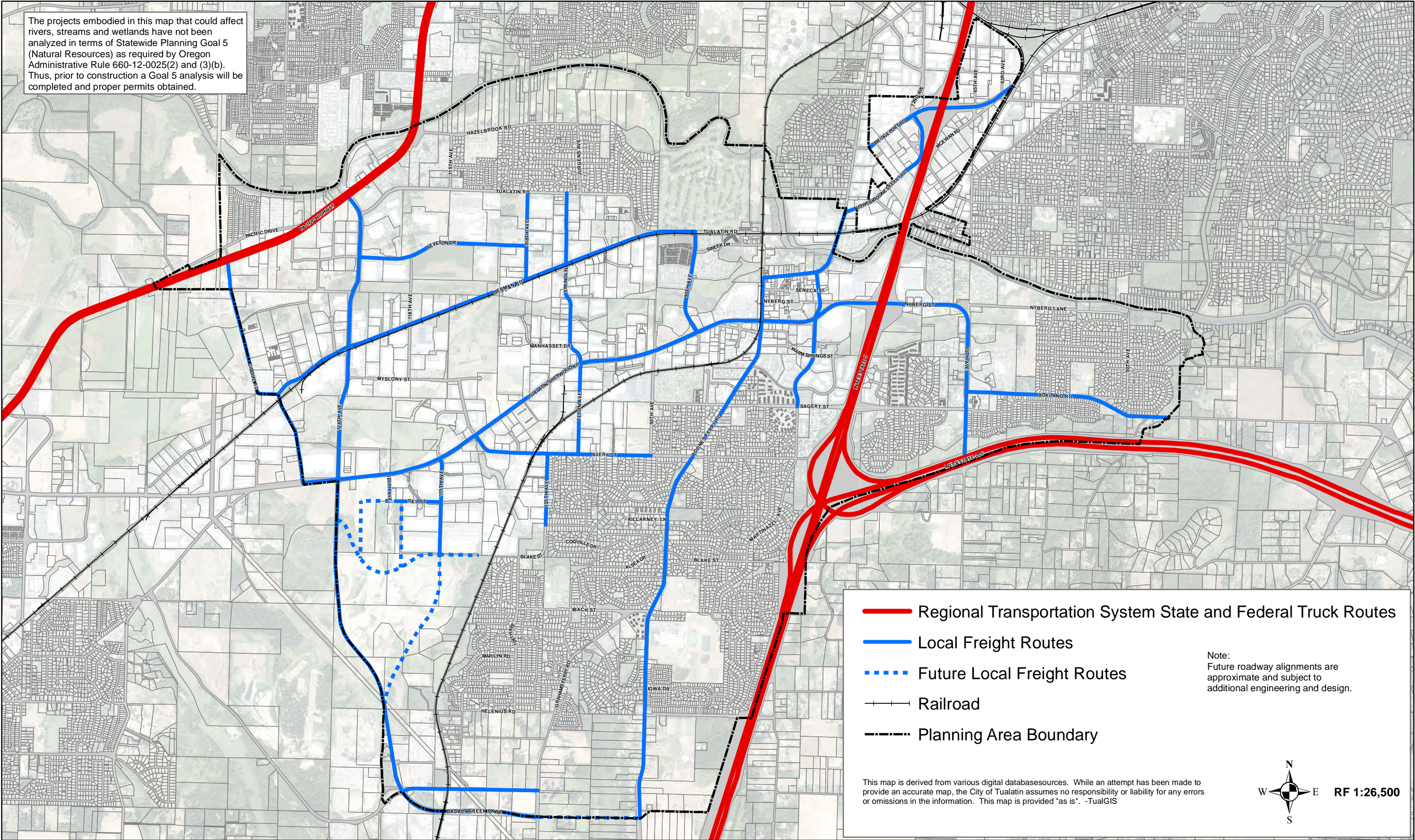
- WES Commuter Station
- WES Commuter Rail
- Park and Ride Facilities
- Major Transit Stops
- Frequent Transit Service
- Standard Transit Service
- Shuttle Service
- On-Demand Shuttle Service Area
- Planning Area Boundary

This map is derived from various digital database sources. While an attempt has been made to provide an accurate map, the City of Tualatin assumes no responsibility or liability for any errors or omissions in the information. This map is provided "as is". -TualGIS



Map 8-6: Freight Routes

The projects embodied in this map that could affect rivers, streams and wetlands have not been analyzed in terms of Statewide Planning Goal 5 (Natural Resources) as required by Oregon Administrative Rule 660-12-0025(2) and (3)(b). Thus, prior to construction a Goal 5 analysis will be completed and proper permits obtained.



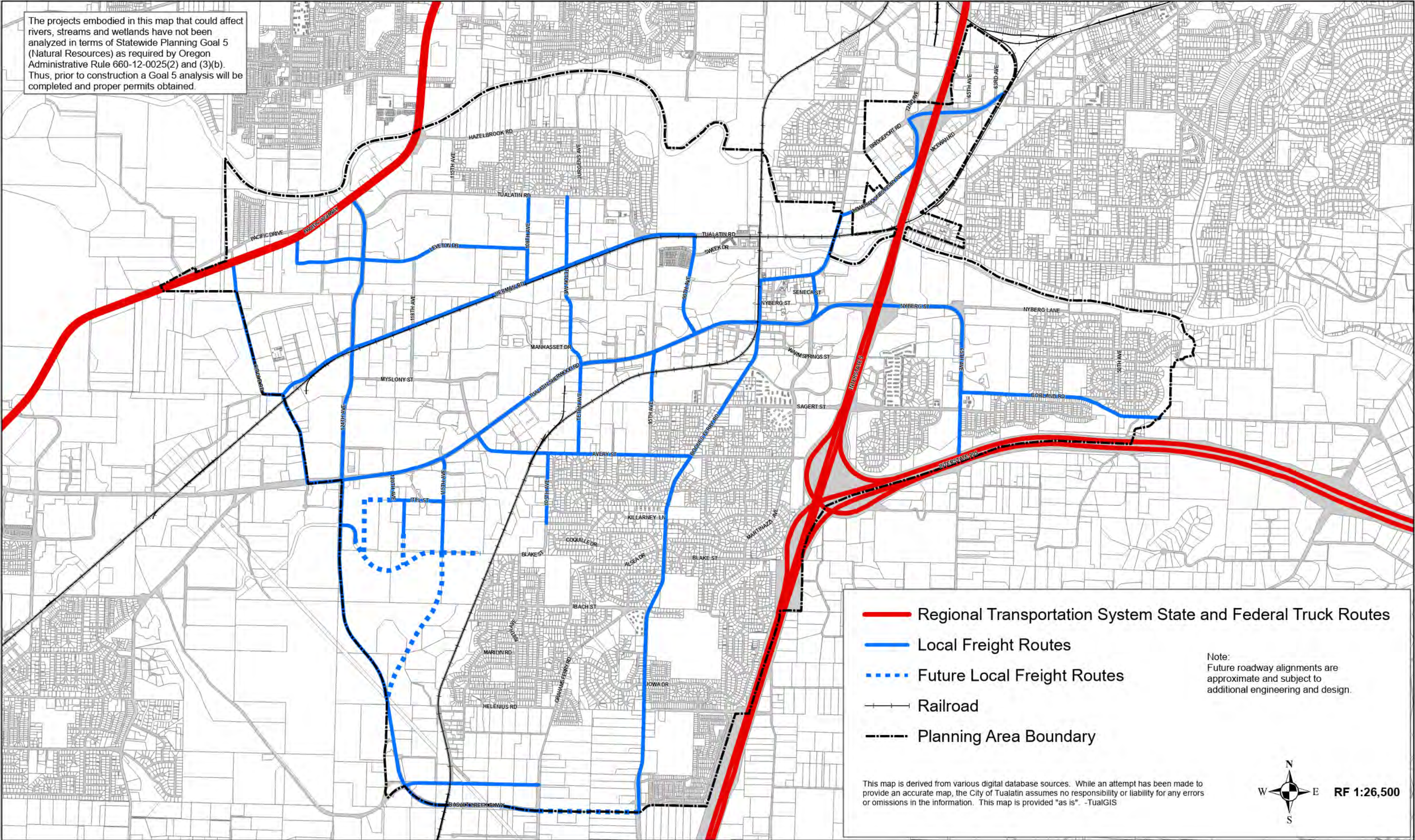
- Regional Transportation System State and Federal Truck Routes
- Local Freight Routes
- Future Local Freight Routes
- Railroad
- Planning Area Boundary

Note:
Future roadway alignments are approximate and subject to additional engineering and design.

This map is derived from various digital databasesources. While an attempt has been made to provide an accurate map, the City of Tualatin assumes no responsibility or liability for any errors or omissions in the information. This map is provided "as is". -TualGIS

Map 8-5: Freight Routes

The projects embodied in this map that could affect rivers, streams and wetlands have not been analyzed in terms of Statewide Planning Goal 5 (Natural Resources) as required by Oregon Administrative Rule 660-12-0025(2) and (3)(b). Thus, prior to construction a Goal 5 analysis will be completed and proper permits obtained.



- Regional Transportation System State and Federal Truck Routes
- Local Freight Routes
- Future Local Freight Routes
- Railroad
- Planning Area Boundary

Note:
Future roadway alignments are
approximate and subject to
additional engineering and design.

This map is derived from various digital database sources. While an attempt has been made to provide an accurate map, the City of Tualatin assumes no responsibility or liability for any errors or omissions in the information. This map is provided "as is". -TualGIS

