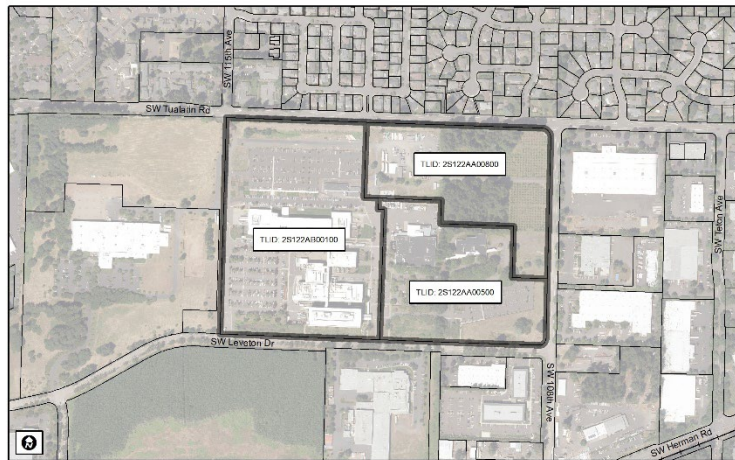


NOTICE OF DECISION



On January 25, 2023 the City of Tualatin approved with conditions AR 22-0006 for Lam Research Corporation Campus, located 11155 SW Leveton Drive; Tax Lots: 2S122AA 500 and 800; 2S122AB 100.

A copy of the application record can be found at: <https://www.tualatinoregon.gov/planning/ar22-0006-lam-office-building>, and a printed copy may be available for a reasonable cost through a public records request: <https://www.tualatinoregon.gov/administration/public-records-request-0>

This staff level decision will be final after 14 calendar days from the date of this mailing unless a Notice of Appeal is filed with the **Community Development Department – Planning Division at 10699 SW Herman Road, Tualatin, OR 97062 before 5:00 p.m on February 10, 2023**. The appeal must be submitted on the City Notice of Appeal form with all the information requested, as required by TDC 32.310, and signed by the appellant. Only those persons who submitted comments during the notice period may submit a request for review. The appeal forms are available at: https://www.tualatinoregon.gov/sites/default/files/fileattachments/planning/page/5095/appeal_form.pdf.

The appeal forms must include reasons, the appeal fee and meet the requirements of Section 32.310 of the Tualatin Development Code.

Date notice mailed: January 27, 2023
File: AR 22-0006