



July 30, 2021

Tyler Reeves  
Specht Development, Inc.  
10260 SW Greenburg Rd.  
Ste. 170  
Portland, OR 97223

**Re: Tree Assessment Report for Tualatin Logistics Park  
20400 SW Cipole Rd., Tualatin, OR 97062**

## **Summary**

Teragan & Associates, Inc. was contacted by Specht Development, Inc. to assist with the tree inventory and tree preservation plan for the proposed development at 20400 SW Cipole Rd. A total of 447 trees over 8 inches DBH were inventoried. A total of 415 trees are proposed for removal (387 trees on the property, two (2) boundary trees, and 26 trees off of the property (in the southeast corner)). Some tree protection fencing is proposed to preserve and protect trees on the property line and trees on neighboring properties from construction impacts, specifically grading.

## **Assignment**

My assignment was to inventory trees over 8-inches in diameter and prepare a tree assessment report for retained trees per City of Tualatin Development Code Section 33.110 Tree Removal Permit/Review requirements.

## **Background**

The property is zoned general manufacturing (MG). The property is not located in the Natural Resource Protection Overlay District (NRPO). The property is not located in the Wetlands Protection Area (WPA) of the Wetlands Protection District (WPD). There are no heritage trees on the property.

## **Observations**

I conducted the tree inventory over several days in mid to late June 2021. The following information was recorded for 447 trees (five (5) of which are boundary trees and 53 of which are off the property but may be impacted by development) over 8-inches in diameter: tree number, tree species, size, physical and structural conditions of the trees, property status (on/off), treatment (remove/preserve), and additional necessary comments (Appendix 3). All accessible trees were tagged with aluminum tags that correspond to the tree number in the inventory.

## **Discussion & Recommendations**

### **Section 33.110 Tree Removal Permit/Review requirements.**

It is necessary to remove 415 trees to construct proposed improvements (33.110.(5)(iii)). The proposed development maximizes the developable area in an MG zone. As such, the footprint of the building,

Teragan & Associates, Inc.  
3145 Westview Circle, Lake Oswego, OR 97034  
E: info@teragan.com | O: 503.697.1975  
E: christine@teragan.com | C:971.978.9381

parking lot, and driveways in addition to the grading required to develop the site, makes tree preservation difficult.

### **TDC 73B.080. - Minimum Landscaping Standards for All Zones (3) Tree Preservation**

Thirty (30) trees that are either on the property line or off the property are proposed for preservation. Two (2) trees on the property are proposed for preservation. Tree protection fencing will protect several of these shared and off-property trees when their root zone at 6x (6-feet of protection for every inch of diameter) encroaches the area of development (trees 353-358,417,421,431,432,434,436-439,442).

### **Recommendations**

Based on the proposed development and City code, I recommend the following tree preservation measures:

1. Trees slated for removal shall be removed prior to the installation of tree protection fencing.
2. Tree protection fencing shall consist of 4-foot-tall chain-link fencing secured with metal posts or 6-foot tall chain link fence panels. Fencing must be sturdy and placed per the tree preservation plan (Appendix 4).
3. Top soil storage and construction material storage must not be located within the drip line of trees designated to be preserved.
4. Inform the project arborist if grade changes occur that would impact this tree preservation plan.

### **Conclusion**

The proposed development requires the removal of 415 trees over 8-inches in diameter. Trees on the property lines and off the property but with encroaching roots can be adequately protected from the proposed grade changes with tree protection fencing.

Sincerely,



Christine Johnson, MS  
ISA Certified Arborist, PN-8730A  
E: christine@teragan.com | C:971.978.9381

### **Enclosures:**

- Appendix 1: Certification of Performance
- Appendix 2: Assumptions and Limiting Conditions
- Appendix 3: Tree Inventory
- Appendix 4: Tree Preservation Plan

## **Appendix 1: Certification of Performance**

I, Christine Johnson, Certify:

- That a representative of Teragan & Associates, Inc., has inspected the tree(s) and/or the property referred to in this report. The extent of the evaluation is stated in the attached report.
- That Teragan & Associates, Inc. has no current or prospective interest in the vegetation of the property that is the subject of this report, and Teragan & Associates, Inc. has no personal interest or bias with respect to the parties involved.
- That Teragan & Associates, Inc.'s compensation is not contingent upon the reporting of a predetermined conclusion that favors the cause of the client or any other party, or upon the results of the assessment, the attainment of stipulated results, or the occurrence of any subsequent events.
- That the analysis, opinions, and conclusions that were developed as part of this report have been prepared according to commonly accepted arboricultural practices.
- That a Board-Certified Master Arborist has overseen the gathering of data.

## **Appendix 2: Assumptions and Limiting Conditions**

1. Any legal description provided to the consultant is assumed to be correct. Teragan and Associates, Inc. checked the species identification and tree diameters in the field.
2. It is assumed that this property is not in violation of any codes, statutes, ordinances, or other governmental regulations.
3. The consultant is not responsible for information gathered from others involved in various activities pertaining to this project. Care has been taken to obtain information from reliable sources.
4. Loss or alteration of any part of this delivered report invalidates the entire report.
5. Drawings and information contained in this report may not be to scale and are intended to be used as display points of reference only.
6. The consultants' role is only to make recommendations. Inaction on the part of those receiving the report is not the responsibility of the consultant.
7. This report is to certify the trees that are on site, their size and condition and create a tree plan. Tree plan to include the measures necessary to protect trees that are to be retained during the construction process.

Appendix 3: Tree Inventory

Tree No.	Common Name	Botanical Name	DBH* (in)	Condition**	Structure**	On Property	Remove or Preserve	Comments
1	Cottonwood	<i>Populus trichocarpa</i>	9	Good	Good	Yes	Remove	
2	Douglas fir	<i>Pseudotsuga menziesii</i>	13	Good	Good	Yes	Remove	
3	Douglas fir	<i>Pseudotsuga menziesii</i>	20	Good	Good	Yes	Remove	
4	Douglas fir	<i>Pseudotsuga menziesii</i>	20	Good	Good	Yes	Remove	
5	Western redcedar	<i>Thuja plicata</i>	16	Good	Good	Yes	Remove	7" WRC to the S.
6	Western redcedar	<i>Thuja plicata</i>	10	Good	Good	Yes	Remove	
7	Douglas fir	<i>Pseudotsuga menziesii</i>	26	Good	Good	Yes	Remove	Large lateral limb on S side.
8	Douglas fir	<i>Pseudotsuga menziesii</i>	18	Good	Good	Yes	Remove	
9	Douglas fir	<i>Pseudotsuga menziesii</i>	20	Good	Good	Yes	Remove	
10	Colorado blue spruce	<i>Pinus pungens</i>	16	Good	Good	Yes	Remove	
11	Douglas fir	<i>Pseudotsuga menziesii</i>	22	Good	Good	Yes	Remove	
12	Douglas fir	<i>Pseudotsuga menziesii</i>	17	Good	Good	Yes	Remove	
13	Douglas fir	<i>Pseudotsuga menziesii</i>	20	Good	Good	Yes	Remove	
14	Western redcedar	<i>Thuja plicata</i>	19	Good	Good	Yes	Remove	Three leaders: 12,12,8.
15	Western redcedar	<i>Thuja plicata</i>	20	Good	Good	Yes	Remove	
16	Colorado blue spruce	<i>Pinus pungens</i>	14	Good	Good	Yes	Remove	Break in row of trees.
17	Douglas fir	<i>Pseudotsuga menziesii</i>	36	Good	Good	Yes	Remove	Large lateral limb at 4'.
18	Western redcedar	<i>Thuja plicata</i>	17	Good	Good	Yes	Remove	
19	Western redcedar	<i>Thuja plicata</i>	17	Good	Good	Yes	Remove	Two leaders: 12,12.
20	Western redcedar	<i>Thuja plicata</i>	8	Good	Good	Yes	Remove	Growing directly E of 19.
21	Western redcedar	<i>Thuja plicata</i>	12	Good	Good	Yes	Remove	
22	Western redcedar	<i>Thuja plicata</i>	8	Good	Good	Yes	Remove	
23	Western redcedar	<i>Thuja plicata</i>	15	Good	Good	Yes	Remove	
24	Western redcedar	<i>Thuja plicata</i>	17	Good	Good	Yes	Remove	Two leaders: 14,10.
25	Colorado blue spruce	<i>Pinus pungens</i>	14	Good	Good	Yes	Remove	
26	Colorado blue spruce	<i>Pinus pungens</i>	13	Good	Good	Yes	Remove	
27	Western redcedar	<i>Thuja plicata</i>	18	Good	Good	Yes	Remove	Two leaders: 16, 9.
28	Western redcedar	<i>Thuja plicata</i>	12	Good	Good	Yes	Remove	
29	Western redcedar	<i>Thuja plicata</i>	30	Good	Good	Yes	Remove	Exaggerated trunk flare with large lower limbs turning up.
30	Western redcedar	<i>Thuja plicata</i>	16	Good	Good	Yes	Remove	Three leaders: 12,8,6.
31	Western redcedar	<i>Thuja plicata</i>	19	Good	Good	Yes	Remove	Two leaders: 15,10; 6" lateral limbs that may have been confused for leaders.
32	Western redcedar	<i>Thuja plicata</i>	Avg. 9	Good	Fair	Yes	Remove	8 leaders.
33	Western redcedar	<i>Thuja plicata</i>	Avg. 8	Good	Fair	Yes	Remove	6 leaders.
34	Douglas fir	<i>Pseudotsuga menziesii</i>	18	Good	Good	Yes	Remove	
35	Douglas fir	<i>Pseudotsuga menziesii</i>	17	Good	Good	Yes	Remove	Madrone to E.
36	Colorado blue spruce	<i>Pinus pungens</i>	15	Good	Good	Yes	Remove	
37	Colorado blue spruce	<i>Pinus pungens</i>	14	Good	Good	Yes	Remove	
38	Colorado blue spruce	<i>Pinus pungens</i>	13	Good	Good	Yes	Remove	
39	Cottonwood	<i>Populus trichocarpa</i>	16	Poor	Fair	Yes	Remove	Two leaders: 7,8,8,9.
40	Western redcedar	<i>Thuja plicata</i>	16	Good	Good	Yes	Remove	Three leaders: 11,8,8
41	Western redcedar	<i>Thuja plicata</i>	14	Good	Good	Yes	Remove	Large lateral branch on N side.
42	Douglas fir	<i>Pseudotsuga menziesii</i>	22	Good	Good	Yes	Remove	
43	Douglas fir	<i>Pseudotsuga menziesii</i>	21	Good	Good	Yes	Remove	
44	Colorado blue spruce	<i>Pinus pungens</i>	16	Good	Good	Yes	Remove	
45	Colorado blue spruce	<i>Pinus pungens</i>	12	Good	Good	Yes	Remove	
46	Douglas fir	<i>Pseudotsuga menziesii</i>	22	Good	Good	Yes	Remove	
47	Douglas fir	<i>Pseudotsuga menziesii</i>	18	Good	Good	Yes	Remove	
48	Western redcedar	<i>Thuja plicata</i>	14	Fair	Fair	Yes	Remove	Five leaders: 10,6,6,4,3; thinning from top down.
49	Western redcedar	<i>Thuja plicata</i>	16	Fair	Fair	Yes	Remove	Three leaders: 10,9,8; thinning from top down
50	Western redcedar	<i>Thuja plicata</i>	14	Good	Good	Yes	Remove	Two leaders: 11,9.
51	Western redcedar	<i>Thuja plicata</i>	16	Good	Good	Yes	Remove	Exaggerated trunk swell.
52	Colorado blue spruce	<i>Pinus pungens</i>	11	Good	Good	Yes	Remove	
53	Colorado blue spruce	<i>Pinus pungens</i>	13	Good	Good	Yes	Remove	
54	Colorado blue spruce	<i>Pinus pungens</i>	9	Fair	Good	Yes	Remove	Suppressed.
55	Douglas fir	<i>Pseudotsuga menziesii</i>	28	Good	Good	Yes	Remove	

Tree No.	Common Name	Botanical Name	DBH* (in)	Condition**	Structure**	On Property	Remove or Preserve	Comments
56	Western redcedar	<i>Thuja plicata</i>	16	Fair	Good	Yes	Remove	Two leaders: 13,10; thinning from top down; listed as a madrone on survey.
57	Western redcedar	<i>Thuja plicata</i>	Avg. 5	Fair	Good	Yes	Remove	More than 20 leaders; thinning from top down.
58	Western redcedar	<i>Thuja plicata</i>	10	Fair	Good	Yes	Remove	Thinning from top down.
59	Douglas fir	<i>Pseudotsuga menziesii</i>	17	Good	Good	Yes	Remove	
60	Western redcedar	<i>Thuja plicata</i>	21	Good	Good	Yes	Remove	Two leaders: 16,14.
61	Western redcedar	<i>Thuja plicata</i>	24	Good	Good	Yes	Remove	Two leaders: 19,14.
62	Douglas fir	<i>Pseudotsuga menziesii</i>	38	Good	Good	Yes	Remove	
63	Douglas fir	<i>Pseudotsuga menziesii</i>	28	Good	Good	Yes	Remove	
64	Colorado blue spruce	<i>Pinus pungens</i>	9	Good	Good	Yes	Remove	
65	Western redcedar	<i>Thuja plicata</i>	21	Good	Good	Yes	Remove	Two leaders: 15,15.
66	Douglas fir	<i>Pseudotsuga menziesii</i>	24	Good	Good	Yes	Remove	
67	Douglas fir	<i>Pseudotsuga menziesii</i>	26	Good	Good	Yes	Remove	
68	Colorado blue spruce	<i>Pinus pungens</i>	15	Good	Good	Yes	Remove	
69	Douglas fir	<i>Pseudotsuga menziesii</i>	25	Good	Good	Yes	Remove	
70	Douglas fir	<i>Pseudotsuga menziesii</i>	19	Good	Fair	Yes	Remove	Suppressed growth under 71.
71	Douglas fir	<i>Pseudotsuga menziesii</i>	53	Good	Good	Yes	Remove	Diameter at 2.5 AGL; codominant leaders split at 8'.
72	Douglas fir	<i>Pseudotsuga menziesii</i>	33	Good	Good	Yes	Remove	
73	Douglas fir	<i>Pseudotsuga menziesii</i>	16	Good	Good	Yes	Remove	
74	Douglas fir	<i>Pseudotsuga menziesii</i>	28	Good	Good	Yes	Remove	
75	Douglas fir	<i>Pseudotsuga menziesii</i>	19	Good	Good	Yes	Remove	
76	Douglas fir	<i>Pseudotsuga menziesii</i>	33	Good	Good	Yes	Remove	
77	Douglas fir	<i>Pseudotsuga menziesii</i>	11	Good	Good	Yes	Remove	
78	Douglas fir	<i>Pseudotsuga menziesii</i>	8	Good	Good	Yes	Remove	
79	Douglas fir	<i>Pseudotsuga menziesii</i>	12	Good	Good	Yes	Remove	
80	Douglas fir	<i>Pseudotsuga menziesii</i>	38	Good	Good	Yes	Remove	
81	Douglas fir	<i>Pseudotsuga menziesii</i>	29	Good	Good	Yes	Remove	
82	Douglas fir	<i>Pseudotsuga menziesii</i>	30	Good	Good	Yes	Remove	
83	Douglas fir	<i>Pseudotsuga menziesii</i>	20	Good	Good	Yes	Remove	
84	Douglas fir	<i>Pseudotsuga menziesii</i>	31	Good	Good	Yes	Remove	
85	Pacific madrone	<i>Arbutus menziesii</i>	13	Good	Fair	Yes	Remove	Extreme phototropism to the NW.
86	Douglas fir	<i>Pseudotsuga menziesii</i>	11	Good	Good	Yes	Remove	
87	Douglas fir	<i>Pseudotsuga menziesii</i>	12	Good	Good	Yes	Remove	
88	Douglas fir	<i>Pseudotsuga menziesii</i>	18	Good	Good	Yes	Remove	
89	Douglas fir	<i>Pseudotsuga menziesii</i>	37	Good	Good	Yes	Remove	
90	Douglas fir	<i>Pseudotsuga menziesii</i>	15	Good	Good	Yes	Remove	
91	Douglas fir	<i>Pseudotsuga menziesii</i>	15	Good	Good	Yes	Remove	
92	Douglas fir	<i>Pseudotsuga menziesii</i>	12	Good	Fair	Yes	Remove	Broken and regrew top.
93	Douglas fir	<i>Pseudotsuga menziesii</i>	15	Good	Good	Yes	Remove	
94	Douglas fir	<i>Pseudotsuga menziesii</i>	25	Good	Good	Yes	Remove	
95	Douglas fir	<i>Pseudotsuga menziesii</i>	16	Fair	Good	Yes	Remove	Red ring rot conks on E side of trunk.
96	Douglas fir	<i>Pseudotsuga menziesii</i>	17	Good	Good	Yes	Remove	
97	Douglas fir	<i>Pseudotsuga menziesii</i>	36	Good	Good	Yes	Remove	Poison oak.
98	Douglas fir	<i>Pseudotsuga menziesii</i>	21	Good	Good	Yes	Remove	
99	Douglas fir	<i>Pseudotsuga menziesii</i>	19	Snag	Snag	Yes	Remove	Snag at 25'.
100	Douglas fir	<i>Pseudotsuga menziesii</i>	15	Good	Good	Yes	Remove	
101	Douglas fir	<i>Pseudotsuga menziesii</i>	19	Good	Good	Yes	Remove	
102	Douglas fir	<i>Pseudotsuga menziesii</i>	15	Good	Good	Yes	Remove	
103	Pacific madrone	<i>Arbutus menziesii</i>	18	Good	Good	Yes	Remove	Two leaders: 13,12.
104	Colorado blue spruce	<i>Pinus pungens</i>	16	Good	Good	Yes	Remove	
105	Colorado blue spruce	<i>Pinus pungens</i>	14	Good	Good	Yes	Remove	
106	Douglas fir	<i>Pseudotsuga menziesii</i>	20	Good	Good	Yes	Remove	
107	Douglas fir	<i>Pseudotsuga menziesii</i>	24	Good	Good	Yes	Remove	
108	Douglas fir	<i>Pseudotsuga menziesii</i>	25	Good	Good	Yes	Remove	
109	Western redcedar	<i>Thuja plicata</i>	25	Good	Good	Yes	Remove	Three leaders: 17,15,11.
110	Colorado blue spruce	<i>Pinus pungens</i>	12	Fair	Good	Yes	Remove	Suppressed.

Tree No.	Common Name	Botanical Name	DBH* (in)	Condition**	Structure**	On Property	Remove or Preserve	Comments
111	Western redcedar	<i>Thuja plicata</i>	26	Good	Good	Yes	Remove	Three leaders: 16,16,13.
112	Western redcedar	<i>Thuja plicata</i>	30	Good	Good	Yes	Remove	Three leaders: 20,17,14.
113	Western redcedar	<i>Thuja plicata</i>	19	Good	Fair	Yes	Remove	6 leaders surrounding main trunk.
114	Douglas fir	<i>Pseudotsuga menziesii</i>	15	Fair	Good	Yes	Remove	Suppressed.
115	Douglas fir	<i>Pseudotsuga menziesii</i>	27	Good	Good	Yes	Remove	
116	Western redcedar	<i>Thuja plicata</i>	15	Good	Good	Yes	Remove	
117	Western redcedar	<i>Thuja plicata</i>	40	Good	Good	Yes	Remove	Fused codominant leaders and large lateral leaders.
118	Douglas fir	<i>Pseudotsuga menziesii</i>	13	Fair	Good	Yes	Remove	
119	Cottonwood	<i>Populus trichocarpa</i>	20	Good	Good	Yes	Remove	Thin and discolored foliage.
120	Douglas fir	<i>Pseudotsuga menziesii</i>	9	Good	Good	Yes	Remove	16672 is less than 8"; wrong icon on survey.
121	Douglas fir	<i>Pseudotsuga menziesii</i>	14	Good	Good	Yes	Remove	
122	Cottonwood	<i>Populus trichocarpa</i>	25	Good	Good	Yes	Remove	Two leaders: 18, 18; high crown.
123	Cottonwood	<i>Populus trichocarpa</i>	14	Good	Good	Yes	Remove	High crown.
124	Cottonwood	<i>Populus trichocarpa</i>	11	Good	Good	Yes	Remove	High crown.
125	Willow	<i>Salix sp.</i>	10	Fair	Good	Yes	Remove	One leader dead.
126	Cottonwood	<i>Populus trichocarpa</i>	8	Dead	Dead	Yes	Remove	
127	Cottonwood	<i>Populus trichocarpa</i>	12	Good	Good	Yes	Remove	High crown.
128	Cottonwood	<i>Populus trichocarpa</i>	14	Dead	Dead	Yes	Remove	
129	Cottonwood	<i>Populus trichocarpa</i>	13	Good	Good	Yes	Remove	High crown; failed multistem willow to E.
130	Douglas fir	<i>Pseudotsuga menziesii</i>	14	Good	Good	Yes	Remove	
131	Douglas fir	<i>Pseudotsuga menziesii</i>	15	Good	Good	Yes	Remove	
132	Cottonwood	<i>Populus trichocarpa</i>	19	Good	Good	Yes	Remove	
133	Cottonwood	<i>Populus trichocarpa</i>	17	Good	Good	Yes	Remove	7" to N and W. #36 and #37 less than 8".
134	Cottonwood	<i>Populus trichocarpa</i>	14	Dead	Dead	Yes	Remove	Snag at 10'.
135	Cottonwood	<i>Populus trichocarpa</i>	8	Dead	Dead	Yes	Remove	
136	Douglas fir	<i>Pseudotsuga menziesii</i>	19	Good	Good	Yes	Remove	
137	Cottonwood	<i>Populus trichocarpa</i>	18	Good	Good	Yes	Remove	
138	Douglas fir	<i>Pseudotsuga menziesii</i>	15	Fair	Good	Yes	Remove	Thinning foliage.
139	Cottonwood	<i>Populus trichocarpa</i>	9	Good	Fair	Yes	Remove	Leaning E; dead tree less than 8" to W.
140	Cottonwood	<i>Populus trichocarpa</i>	10	Dead	Dead	Yes	Remove	Snag at 20'.
141	Cottonwood	<i>Populus trichocarpa</i>	15	Good	Good	Yes	Remove	High crown.
142	Cottonwood	<i>Populus trichocarpa</i>	11	Good	Good	Yes	Remove	
143	Cottonwood	<i>Populus trichocarpa</i>	13	Good	Good	Yes	Remove	
144	Cottonwood	<i>Populus trichocarpa</i>	10	Good	Good	Yes	Remove	
145	Cottonwood	<i>Populus trichocarpa</i>	8	Fair	Fair	Yes	Remove	Suppressed; upper canopy leans NE.
146	Cottonwood	<i>Populus trichocarpa</i>	24	Good	Good	Yes	Remove	
147	Cottonwood	<i>Populus trichocarpa</i>	22	Good	Good	Yes	Remove	
148	Cottonwood	<i>Populus trichocarpa</i>	11	Good	Good	Yes	Remove	
149	Cottonwood	<i>Populus trichocarpa</i>	14	Good	Fair	Yes	Remove	High crown; suppressed side leader.
150	Cottonwood	<i>Populus trichocarpa</i>	22	Good	Good	Yes	Remove	
151	Cottonwood	<i>Populus trichocarpa</i>	20	Good	Good	Yes	Remove	Two leaders: 15,13.
152	Douglas fir	<i>Pseudotsuga menziesii</i>	16	Good	Good	Yes	Remove	
153	Western redcedar	<i>Thuja plicata</i>	11	Good	Good	Yes	Remove	Two leaders: 9,6.
154	Cottonwood	<i>Populus trichocarpa</i>	20	Good	Good	Yes	Remove	
155	Cottonwood	<i>Populus trichocarpa</i>	20	Good	Good	Yes	Remove	Several trees less than 8" to S.
156	Cottonwood	<i>Populus trichocarpa</i>	17	Good	Good	Yes	Remove	
157	Cottonwood	<i>Populus trichocarpa</i>	18	Good	Good	Yes	Remove	Small western redcedar to N.
158	Cottonwood	<i>Populus trichocarpa</i>	11	Good	Good	Yes	Remove	
159	Cottonwood	<i>Populus trichocarpa</i>	18	Good	Good	Yes	Remove	
160	Bigleaf maple	<i>Acer macrophyllum</i>	13	Good	Good	Yes	Remove	Fused codominant leaders.
161	Red alder	<i>Alnus rubra</i>	13	Good	Good	Yes	Remove	
162	Cottonwood	<i>Populus trichocarpa</i>	17	Good	Good	Yes	Remove	
163	Cottonwood	<i>Populus trichocarpa</i>	12	Good	Good	Yes	Remove	High crown.
164	Cottonwood	<i>Populus trichocarpa</i>	11	Good	Good	Yes	Remove	High crown.
165	Cottonwood	<i>Populus trichocarpa</i>	10	Good	Good	Yes	Remove	

Tree No.	Common Name	Botanical Name	DBH* (in)	Condition**	Structure**	On Property	Remove or Preserve	Comments
166	Cottonwood	<i>Populus trichocarpa</i>	11	Good	Good	Yes	Remove	High crown.
167	Cottonwood	<i>Populus trichocarpa</i>	9	Good	Good	Yes	Remove	High crown.
168	Cottonwood	<i>Populus trichocarpa</i>	14	Good	Good	Yes	Remove	High crown.
169	Cottonwood	<i>Populus trichocarpa</i>	13	Good	Good	Yes	Remove	High crown.
170	Cottonwood	<i>Populus trichocarpa</i>	8	Good	Good	Yes	Remove	High crown.
171	Cottonwood	<i>Populus trichocarpa</i>	12	Good	Good	Yes	Remove	High crown.
172	Cottonwood	<i>Populus trichocarpa</i>	14	Good	Good	Yes	Remove	High crown.
173	Cottonwood	<i>Populus trichocarpa</i>	17	Good	Good	Yes	Remove	High crown.
174	Cottonwood	<i>Populus trichocarpa</i>	10	Good	Good	Yes	Remove	
175	Cottonwood	<i>Populus trichocarpa</i>	16	Good	Good	Yes	Remove	
176	Pacific madrone	<i>Arbutus menziesii</i>	8	Good	Good	Yes	Remove	
177	Cottonwood	<i>Populus trichocarpa</i>	23	Good	Good	Yes	Remove	
178	Cottonwood	<i>Populus trichocarpa</i>	13	Good	Good	Yes	Remove	
179	Cottonwood	<i>Populus trichocarpa</i>	11	Good	Good	Yes	Remove	Lean to N
180	Cottonwood	<i>Populus trichocarpa</i>	16	Good	Good	Yes	Remove	
181	Cottonwood	<i>Populus trichocarpa</i>	8	Good	Good	Yes	Remove	High crown; 16807 less than 8".
182	Cottonwood	<i>Populus trichocarpa</i>	11	Good	Good	Yes	Remove	High crown.
183	Cottonwood	<i>Populus trichocarpa</i>	8	Good	Good	Yes	Remove	High and narrow crown.Change all high crowns to high and narrow crown.
184	Cottonwood	<i>Populus trichocarpa</i>	8	Good	Good	Yes	Remove	High and narrow crown.
185	Cottonwood	<i>Populus trichocarpa</i>	8	Good	Good	Yes	Remove	High and narrow crown; 16712 6" snag.
186	Cottonwood	<i>Populus trichocarpa</i>	13	Good	Good	Yes	Remove	High and narrow crown; tree less than 8" to SW.
187	Cottonwood	<i>Populus trichocarpa</i>	13	Good	Good	Yes	Remove	
188	Cottonwood	<i>Populus trichocarpa</i>	9	Good	Good	Yes	Remove	16717 less than 8".
189	Cottonwood	<i>Populus trichocarpa</i>	9	Dead	Dead	Yes	Remove	
190	Cottonwood	<i>Populus trichocarpa</i>	9	Good	Good	Yes	Remove	Lean to W; 16725 less than 8".
191	Cottonwood	<i>Populus trichocarpa</i>	13	Good	Good	Yes	Remove	
192	Cottonwood	<i>Populus trichocarpa</i>	19	Good	Good	Yes	Remove	16728 less than 8.
193	Cottonwood	<i>Populus trichocarpa</i>	11	Good	Good	Yes	Remove	
194	Cottonwood	<i>Populus trichocarpa</i>	13	Good	Fair	Yes	Remove	16621 less than 8"; unbalanced canopy to the W.
195	Cottonwood	<i>Populus trichocarpa</i>	10	Good	Fair	Yes	Remove	Unbalanced canopy to the W; 16715 less than 8".
196	Cottonwood	<i>Populus trichocarpa</i>	17	Good	Fair	Yes	Remove	Unbalanced canopy to the W.
197	Cottonwood	<i>Populus trichocarpa</i>	9	Good	Fair	Yes	Remove	Lost top; surrounded by fallen trees.
198	Cottonwood	<i>Populus trichocarpa</i>	10	Fair	Very poor	Yes	Remove	Failed.
199	Cottonwood	<i>Populus trichocarpa</i>	8	Fair	Very poor	Yes	Remove	Failed.
200	Cottonwood	<i>Populus trichocarpa</i>	11	Fair	Very poor	Yes	Remove	Failed.
201	Cottonwood	<i>Populus trichocarpa</i>	14	Fair	Very poor	Yes	Remove	Failed.
202	Cottonwood	<i>Populus trichocarpa</i>	14	Fair	Very poor	Yes	Remove	Failed.
203	Douglas fir	<i>Pseudotsuga menziesii</i>	35	Good	Good	Yes	Remove	
204	Cottonwood	<i>Populus trichocarpa</i>	16	Good	Fair	Yes	Remove	Unbalanced canopy to the NW.
205	Cottonwood	<i>Populus trichocarpa</i>	25	Good	Fair	Yes	Remove	Unbalanced canopy to the W; lean W; dead tree leaning on upper canopy.
206	Cottonwood	<i>Populus trichocarpa</i>	18	Good	Fair	Yes	Remove	High and narrow crown.
207	Cottonwood	<i>Populus trichocarpa</i>	15	Poor	Very poor	Yes	Remove	Partially uprooted and falling W.
208	Cottonwood	<i>Populus trichocarpa</i>	10	Dead	Dead	Yes	Remove	Failed into 206.
209	Cottonwood	<i>Populus trichocarpa</i>	12	Poor	Very poor	Yes	Remove	Snag at 15'.
210	Cottonwood	<i>Populus trichocarpa</i>	14	Good	Good	Yes	Remove	High and narrow crown.
211	Cottonwood	<i>Populus trichocarpa</i>	14	Good	Fair	Yes	Remove	Unbalanced to SW.
212	Douglas fir	<i>Pseudotsuga menziesii</i>	12	Good	Good	Yes	Remove	
213	Cottonwood	<i>Populus trichocarpa</i>	17	Fair	Very poor	Yes	Remove	Snag at 40'.
214	Cottonwood	<i>Populus trichocarpa</i>	18	Good	Fair	Yes	Remove	Unbalanced canopy to the SE.
215	Bigleaf maple	<i>Acer macrophyllum</i>	12	Good	Good	Yes	Remove	
216	Douglas fir	<i>Pseudotsuga menziesii</i>	21	Good	Good	Yes	Remove	
217	Bigleaf maple	<i>Acer macrophyllum</i>	14	Good	Good	Yes	Remove	Two leaders: 10, 10.
218	Bigleaf maple	<i>Acer macrophyllum</i>	10	Good	Good	Yes	Remove	
219	Bigleaf maple	<i>Acer macrophyllum</i>	8	Good	Good	Yes	Remove	4" side leader.
220	Bigleaf maple	<i>Acer macrophyllum</i>	12	Good	Good	Yes	Remove	Three leaders: 7,7,7.

Tree No.	Common Name	Botanical Name	DBH* (in)	Condition**	Structure**	On Property	Remove or Preserve	Comments
221	Cottonwood	<i>Populus trichocarpa</i>	12	Good	Good	Yes	Remove	
222	Bigleaf maple	<i>Acer macrophyllum</i>	9	Good	Fair	Yes	Remove	Unbalanced to E.
223	Cottonwood	<i>Populus trichocarpa</i>	11	Good	Fair	Yes	Remove	Unbalanced to SE; 7" tree to S.
224	Cottonwood	<i>Populus trichocarpa</i>	16	Good	Fair	Yes	Remove	Unbalanced to the SE.
225	Cottonwood	<i>Populus trichocarpa</i>	18	Good	Fair	Yes	Remove	Unbalanced to the SE.
226	Cottonwood	<i>Populus trichocarpa</i>	25	Good	Good	Yes	Remove	
227	Douglas fir	<i>Pseudotsuga menziesii</i>	9	Fair	Fair	Yes	Remove	Suppressed.
228	Cottonwood	<i>Populus trichocarpa</i>	12	Good	Fair	Yes	Remove	Lean to W; high crown.
229	Cottonwood	<i>Populus trichocarpa</i>	13	Good	Good	Yes	Remove	
230	Cottonwood	<i>Populus trichocarpa</i>	12	Good	Fair	Yes	Remove	Lean to SW.
231	Cottonwood	<i>Populus trichocarpa</i>	19	Good	Good	Yes	Remove	16428 less than 8".
232	Douglas fir	<i>Pseudotsuga menziesii</i>	15	Good	Good	Yes	Remove	
233	Willow	<i>Salix sp.</i>	13	Poor	Very poor	Yes	Remove	Failed S and hacked back, still rooted and sprouting.
234	Willow	<i>Salix sp.</i>	13	Good	Good	Yes	Remove	Two leaders: 10,9; 7" to W.
235	Willow	<i>Salix sp.</i>	10	Fair	Fair	Yes	Remove	Three leaders: 7,6,5; decaying leaders.
236	Douglas fir	<i>Pseudotsuga menziesii</i>	27	Good	Good	Yes	Remove	
237	Douglas fir	<i>Pseudotsuga menziesii</i>	24	Good	Good	Yes	Remove	
238	Douglas fir	<i>Pseudotsuga menziesii</i>	26	Good	Good	Yes	Remove	
239	Douglas fir	<i>Pseudotsuga menziesii</i>	24	Good	Good	Yes	Remove	
240	Douglas fir	<i>Pseudotsuga menziesii</i>	27	Good	Good	Yes	Remove	
241	Douglas fir	<i>Pseudotsuga menziesii</i>	17	Good	Good	Yes	Remove	Diameter measured at 5'.
242	Douglas fir	<i>Pseudotsuga menziesii</i>	32	Good	Good	Yes	Remove	
243	Willow	<i>Salix sp.</i>	Avg. 7	Good	Good	Yes	Remove	8 leaders.
244	Willow	<i>Salix sp.</i>	Avg. 5.	Good	Good	Yes	Remove	6 leaders.
245	Deodar cedar	<i>Cedrus deodara</i>	19	Fair	Good	Yes	Remove	Poor branch growth and taper.
246	Plume cryptomeria	<i>Cryptomeria japonica</i> 'Elegans'	40	Fair	Fair	Yes	Remove	
247	Plume cryptomeria	<i>Cryptomeria japonica</i> 'Elegans'	40	Fair	Fair	Yes	Remove	
248	Douglas fir	<i>Pseudotsuga menziesii</i>	26	Good	Good	Yes	Remove	
249	Douglas fir	<i>Pseudotsuga menziesii</i>	26	Good	Good	Yes	Remove	
250	Douglas fir	<i>Pseudotsuga menziesii</i>	19	Good	Good	Yes	Remove	
251	Pear	<i>Pyrus calleryana</i>	10	Good	Good	Yes	Remove	Diameter at 3'.
252	Pacific madrone	<i>Arbutus menziesii</i>	11	Good	Good	Yes	Remove	E side of fence.
253	Douglas fir	<i>Pseudotsuga menziesii</i>	45	Good	Good	Yes	Remove	
254	Douglas fir	<i>Pseudotsuga menziesii</i>	14	Good	Good	Yes	Remove	E side of fence.
255	Douglas fir	<i>Pseudotsuga menziesii</i>	34	Good	Good	Yes	Remove	Two leaders: 22,26; fused with 256.
256	Douglas fir	<i>Pseudotsuga menziesii</i>	9	Good	Good	Yes	Remove	
257	Douglas fir	<i>Pseudotsuga menziesii</i>	23	Good	Good	Yes	Remove	
258	Douglas fir	<i>Pseudotsuga menziesii</i>	31	Good	Good	Yes	Remove	
259	Douglas fir	<i>Pseudotsuga menziesii</i>	45	Good	Good	No	Remove	
260	Pacific madrone	<i>Arbutus menziesii</i>	19	Fair	Fair	No	Remove	Extreme phototropism to the S.
261	Bigleaf maple	<i>Acer macrophyllum</i>	20	Fair	Fair	No	Remove	Broken branches; suppressed.
262	Pacific madrone	<i>Arbutus menziesii</i>	8	Good	Fair	No	Remove	Leaders extreme phototropism to N and S.
263	Douglas fir	<i>Pseudotsuga menziesii</i>	32	Good	Good	No	Remove	
264	Douglas fir	<i>Pseudotsuga menziesii</i>	20	Good	Good	No	Remove	
265	Douglas fir	<i>Pseudotsuga menziesii</i>	11	Good	Good	No	Remove	
266	Douglas fir	<i>Pseudotsuga menziesii</i>	20	Good	Good	Yes	Remove	
267	Douglas fir	<i>Pseudotsuga menziesii</i>	24	Good	Good	No	Remove	
268	Douglas fir	<i>Pseudotsuga menziesii</i>	41	Good	Good	No	Remove	14619 less than 8".
269	Douglas fir	<i>Pseudotsuga menziesii</i>	18	Good	Good	No	Remove	
270	Douglas fir	<i>Pseudotsuga menziesii</i>	8	Poor	Poor	Yes	Remove	Suppressed, searching for light.
271	Douglas fir	<i>Pseudotsuga menziesii</i>	11	Good	Good	Yes	Remove	
272	Douglas fir	<i>Pseudotsuga menziesii</i>	12	Good	Good	Yes	Remove	
273	Douglas fir	<i>Pseudotsuga menziesii</i>	11	Good	Good	Yes	Remove	
274	Douglas fir	<i>Pseudotsuga menziesii</i>	10	Good	Good	Yes	Remove	
275	Douglas fir	<i>Pseudotsuga menziesii</i>	22	Good	Good	Yes	Remove	



Tree No.	Common Name	Botanical Name	DBH* (in)	Condition**	Structure**	On Property	Remove or Preserve	Comments
276	Douglas fir	<i>Pseudotsuga menziesii</i>	9	Poor	Poor	Yes	Remove	Suppressed, unbalanced to the N.
277	Douglas fir	<i>Pseudotsuga menziesii</i>	10	Good	Good	Yes	Remove	
278	Douglas fir	<i>Pseudotsuga menziesii</i>	12	Good	Good	Yes	Remove	
279	Douglas fir	<i>Pseudotsuga menziesii</i>	24	Good	Good	Boundary tree	Remove	
280	Bigleaf maple	<i>Acer macrophyllum</i>	14	Good	Good	No	Remove	Fir stump to W.
281	Douglas fir	<i>Pseudotsuga menziesii</i>	21	Good	Fair	No	Remove	High crown.
282	Douglas fir	<i>Pseudotsuga menziesii</i>	14	Good	Fair	No	Remove	High crown.
283	Douglas fir	<i>Pseudotsuga menziesii</i>	11	Fair	Fair	No	Remove	Thin; high crown.
284	Douglas fir	<i>Pseudotsuga menziesii</i>	8	Poor	Poor	No	Remove	Suppressed.
285	Bigleaf maple	<i>Acer macrophyllum</i>	9	Good	Fair	No	Remove	Unbalanced to N.
286	Bigleaf maple	<i>Acer macrophyllum</i>	9	Good	Good	No	Remove	
287	Douglas fir	<i>Pseudotsuga menziesii</i>	18	Poor	Fair	No	Remove	Thin; discolored foliage; high crown.
288	Douglas fir	<i>Pseudotsuga menziesii</i>	25	Good	Good	No	Remove	
289	Douglas fir	<i>Pseudotsuga menziesii</i>	15	Fair	Fair	No	Remove	High crown ; low LCR.
290	Douglas fir	<i>Pseudotsuga menziesii</i>	9	Fair	Fair	No	Remove	Suppressed.
291	Douglas fir	<i>Pseudotsuga menziesii</i>	16	Good	Fair	No	Off property, preserve	Unbalanced to the W.
292	Douglas fir	<i>Pseudotsuga menziesii</i>	25	Good	Fair	No	Remove	Unbalanced to NW.
293	Douglas fir	<i>Pseudotsuga menziesii</i>	8	Dead	Dead	No	Remove	
294	Douglas fir	<i>Pseudotsuga menziesii</i>	30	Good	Fair	No	Remove	High crown.
295	Douglas fir	<i>Pseudotsuga menziesii</i>	22	Good	Good	Yes	Remove	
296	Douglas fir	<i>Pseudotsuga menziesii</i>	24	Good	Good	Yes	Remove	
297	Douglas fir	<i>Pseudotsuga menziesii</i>	12	Good	Good	Yes	Remove	7" tree to SE.
298	Douglas fir	<i>Pseudotsuga menziesii</i>	28	Good	Good	Yes	Remove	
299	Douglas fir	<i>Pseudotsuga menziesii</i>	29	Good	Good	Yes	Remove	
300	Douglas fir	<i>Pseudotsuga menziesii</i>	26	Good	Good	Yes	Remove	
301	Douglas fir	<i>Pseudotsuga menziesii</i>	8	Fair	Fair	Yes	Remove	Suppressed.
302	Western redcedar	<i>Thuja plicata</i>	8	Good	Good	Yes	Remove	
303	Douglas fir	<i>Pseudotsuga menziesii</i>	27	Good	Good	Yes	Remove	
304	Douglas fir	<i>Pseudotsuga menziesii</i>	41	Good	Good	Yes	Remove	
305	Douglas fir	<i>Pseudotsuga menziesii</i>	25	Good	Good	Yes	Remove	
306	Douglas fir	<i>Pseudotsuga menziesii</i>	18	Good	Good	Yes	Remove	
307	Douglas fir	<i>Pseudotsuga menziesii</i>	29	Good	Good	Yes	Remove	
308	Douglas fir	<i>Pseudotsuga menziesii</i>	20	Good	Good	Yes	Remove	
309	Pacific madrone	<i>Arbutus menziesii</i>	9	Good	Good	Yes	Remove	
310	Western redcedar	<i>Thuja plicata</i>	8	Good	Good	Yes	Remove	Fifth redcedar from E.
311	Western redcedar	<i>Thuja plicata</i>	9	Good	Good	Yes	Remove	Two leaders: 7,5.
312	Western redcedar	<i>Thuja plicata</i>	8	Good	Good	Yes	Remove	
313	Western redcedar	<i>Thuja plicata</i>	9	Good	Good	Yes	Remove	Two leaders: 7,6.
314	Western redcedar	<i>Thuja plicata</i>	9	Good	Good	Yes	Remove	
315	Western redcedar	<i>Thuja plicata</i>	9	Good	Good	Yes	Remove	Two leaders: 7,5.
316	Western redcedar	<i>Thuja plicata</i>	10	Good	Good	Yes	Remove	Last in stand.
317	Pacific madrone	<i>Arbutus menziesii</i>	8	Good	Good	Yes	Remove	
318	Douglas fir	<i>Pseudotsuga menziesii</i>	8	Good	Good	Yes	Remove	
319	Douglas fir	<i>Pseudotsuga menziesii</i>	14	Good	Good	Yes	Remove	Fused leaders.
320	Maple	<i>Acer rubrum</i> 'Armstrong'	20	Good	Good	Yes	Remove	Diameter at 3.5' AGL.
321	Maple	<i>Acer rubrum</i> 'Armstrong'	20	Good	Good	Yes	Remove	
322	Maple	<i>Acer rubrum</i> 'Armstrong'	14	Good	Good	Yes	Remove	
323	Maple	<i>Acer rubrum</i> 'Armstrong'	23	Good	Good	Yes	Remove	
324	Maple	<i>Acer rubrum</i> 'Armstrong'	15	Good	Good	Yes	Remove	
325	Pear	<i>Pyrus calleryana</i>	8	Good	Fair	Yes	Remove	Unbalanced to the N.
326	Maple	<i>Acer rubrum</i> 'Armstrong'	12	Good	Good	Yes	Remove	
327	Maple	<i>Acer rubrum</i> 'Armstrong'	9	Good	Good	Yes	Remove	
328	Maple	<i>Acer rubrum</i> 'Armstrong'	9	Good	Good	Yes	Remove	
329	Maple	<i>Acer rubrum</i> 'Armstrong'	9	Good	Good	Yes	Remove	
330	Pear	<i>Pyrus calleryana</i>	8	Good	Fair	Yes	Remove	Unbalanced to the N.

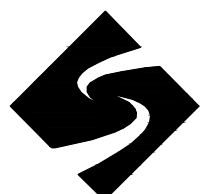
Tree No.	Common Name	Botanical Name	DBH* (in)	Condition**	Structure**	On Property	Remove or Preserve	Comments
331	Maple	<i>Acer rubrum</i> 'Armstrong'	13	Good	Good	Yes	Remove	
332	Pear	<i>Pyrus calleryana</i>	12	Good	Fair	Yes	Remove	Splits into 3 leaders at 5'.
333	Maple	<i>Acer rubrum</i> 'Armstrong'	15	Good	Good	Yes	Remove	
334	Maple	<i>Acer rubrum</i> 'Armstrong'	16	Good	Good	Yes	Remove	
335	Pear	<i>Pyrus calleryana</i>	12	Fair	Fair	Yes	Remove	Unbalanced to the N.
336	Maple	<i>Acer rubrum</i> 'Armstrong'	12	Good	Good	Yes	Remove	
337	Pear	<i>Pyrus calleryana</i>	13	Good	Fair	Yes	Remove	Unbalanced to the NW.
338	Maple	<i>Acer rubrum</i> 'Armstrong'	9	Good	Good	Yes	Remove	
339	Pear	<i>Pyrus calleryana</i>	8	Good	Good	Yes	Remove	
340	Maple	<i>Acer rubrum</i> 'Armstrong'	11	Good	Good	Yes	Remove	
341	Pear	<i>Pyrus calleryana</i>	13	Good	Fair	Yes	Remove	Wound from broken leader on NWside ~5'.
342	Maple	<i>Acer rubrum</i> 'Armstrong'	25	Good	Good	Yes	Remove	
343	Pear	<i>Pyrus calleryana</i>	13	Good	Good	Yes	Remove	Diameter measured at 3.5' AGL.
344	Pear	<i>Pyrus calleryana</i>	17	Good	Good	Yes	Remove	Diameter measured at 4.0' AGL.
345	Pear	<i>Pyrus calleryana</i>	13	Good	Good	Yes	Remove	Diameter measured at 3.5' AGL.
346	Raywood ash	<i>Fraxinus oxycarpa</i> 'Raywood'	19	Good	Fair	Yes	Remove	Wound on NW leader. Probable likelihood of failure.
347	Raywood ash	<i>Fraxinus oxycarpa</i> 'Raywood'	22	Good	Fair	Yes	Remove	6' by 2' wound on NE trunk; good wound wood response; 50% of circumference.
348	Raywood ash	<i>Fraxinus oxycarpa</i> 'Raywood'	13	Good	Good	Yes	Remove	
349	Raywood ash	<i>Fraxinus oxycarpa</i> 'Raywood'	18	Good	Good	Yes	Remove	
350	Raywood ash	<i>Fraxinus oxycarpa</i> 'Raywood'	18	Good	Good	Yes	Remove	
351	Raywood ash	<i>Fraxinus oxycarpa</i> 'Raywood'	19	Good	Good	Yes	Remove	
352	Norway maple	<i>Acer platanoides</i>	8	Good	Good	Yes	Remove	Failed tree to S.
353	Douglas fir	<i>Pseudotsuga menziesii</i>	10	Good	Fair	No	Off property, protect from grading	Growing up and into 354.
354	Norway maple	<i>Acer platanoides</i>	30	Good	Good	No	Off property, protect from grading	Diameter measured at 2.0' AGL.
355	Douglas fir	<i>Pseudotsuga menziesii</i>	33	Good	Good	Boundary tree	Preserve	
356	Douglas fir	<i>Pseudotsuga menziesii</i>	11	Good	Good	Boundary tree	Preserve	
357	Bigleaf maple	<i>Acer macrophyllum</i>	15	Poor	Poor	Yes	Preserve	Deadwood, missing bark; sprouting.
358	Bigleaf maple	<i>Acer macrophyllum</i>	21	Good	Good	Yes	Preserve	
359	Maple	<i>Acer rubrum</i> 'Armstrong'	25	Good	Good	Yes	Remove	
360	Maple	<i>Acer rubrum</i> 'Armstrong'	19	Good	Good	Yes	Remove	
361	Maple	<i>Acer rubrum</i> 'Armstrong'	16	Good	Good	Yes	Remove	
362	Maple	<i>Acer rubrum</i> 'Armstrong'	14	Good	Good	Yes	Remove	
363	Maple	<i>Acer rubrum</i> 'Armstrong'	23	Good	Good	Yes	Remove	
364	Maple	<i>Acer rubrum</i> 'Armstrong'	24	Good	Good	Yes	Remove	
365	Maple	<i>Acer rubrum</i> 'Armstrong'	12	Good	Good	Yes	Remove	
366	Maple	<i>Acer rubrum</i> 'Armstrong'	23	Good	Good	Yes	Remove	
367	Maple	<i>Acer rubrum</i> 'Armstrong'	22	Good	Good	Yes	Remove	
368	Maple	<i>Acer rubrum</i> 'Armstrong'	17	Good	Good	Yes	Remove	
369	Pine	<i>Pinus monticola</i>	15	Fair	Good	Yes	Remove	Thin.
370	Coast pine	<i>Pinus contorta</i>	10	Good	Good	Yes	Remove	
371	Coast pine	<i>Pinus contorta</i>	9	Good	Good	Yes	Remove	Moderate sequoia pitch moth.
372	Coast pine	<i>Pinus contorta</i>	13	Good	Good	Yes	Remove	
373	Coast pine	<i>Pinus contorta</i>	12	Good	Good	Yes	Remove	
374	Coast pine	<i>Pinus contorta</i>	8	Good	Good	Yes	Remove	
375	Coast pine	<i>Pinus contorta</i>	11	Good	Good	Yes	Remove	Moderate sequoia pitch moth.
376	Colorado blue spruce	<i>Pinus pungens</i>	14	Good	Good	Yes	Remove	
377	Colorado blue spruce	<i>Pinus pungens</i>	11	Good	Good	Yes	Remove	
378	Colorado blue spruce	<i>Pinus pungens</i>	12	Good	Good	Yes	Remove	
379	Western hemlock	<i>Tsuga heterophylla</i>	12	Good	Good	Yes	Remove	
380	Douglas fir	<i>Pseudotsuga menziesii</i>	26	Good	Good	Yes	Remove	
381	Colorado blue spruce	<i>Pinus pungens</i>	14	Good	Good	Yes	Remove	
382	Colorado blue spruce	<i>Pinus pungens</i>	16	Good	Good	Yes	Remove	
383	Colorado blue spruce	<i>Pinus pungens</i>	15	Good	Good	Yes	Remove	
384	Douglas fir	<i>Pseudotsuga menziesii</i>	26	Good	Good	Yes	Remove	
385	Douglas fir	<i>Pseudotsuga menziesii</i>	28	Good	Good	Yes	Remove	

Tree No.	Common Name	Botanical Name	DBH* (in)	Condition**	Structure**	On Property	Remove or Preserve	Comments
386	Colorado blue spruce	<i>Pinus pungens</i>	11	Good	Good	Yes	Remove	
387	Colorado blue spruce	<i>Pinus pungens</i>	16	Good	Good	Yes	Remove	
388	Colorado blue spruce	<i>Pinus pungens</i>	15	Good	Good	Yes	Remove	
389	Colorado blue spruce	<i>Pinus pungens</i>	9	Poor	Good	Yes	Remove	Suppressed.
390	Colorado blue spruce	<i>Pinus pungens</i>	13	Good	Good	Yes	Remove	
391	Colorado blue spruce	<i>Pinus pungens</i>	10	Good	Good	Yes	Remove	
392	Western redcedar	<i>Thuja plicata</i>	23	Good	Good	Yes	Remove	Two leaders: 17,15.
393	Western redcedar	<i>Thuja plicata</i>	23	Good	Good	Yes	Remove	Two leaders: 16,17.
394	Douglas fir	<i>Pseudotsuga menziesii</i>	19	Good	Good	Yes	Remove	
395	Douglas fir	<i>Pseudotsuga menziesii</i>	21	Good	Good	Yes	Remove	
396	Douglas fir	<i>Pseudotsuga menziesii</i>	21	Good	Good	Yes	Remove	
397	Colorado blue spruce	<i>Pinus pungens</i>	11	Fair	Good	Yes	Remove	Suppressed , not tagged, blackberry
398	Colorado blue spruce	<i>Pinus pungens</i>	15	Good	Good	Yes	Remove	
399	Western redcedar	<i>Thuja plicata</i>	31	Good	Good	Yes	Remove	Three leaders: 22,20,9.
400	Western redcedar	<i>Thuja plicata</i>	15	Good	Good	Yes	Remove	
401	Western redcedar	<i>Thuja plicata</i>	16	Good	Good	Yes	Remove	Three lateral leaders 7" to SE; not tagged; blackberry.
402	Western redcedar	<i>Thuja plicata</i>	23	Good	Good	Yes	Remove	Two leaders: 15,14,12; small leader to the N.
403	Western redcedar	<i>Thuja plicata</i>	18	Good	Good	Yes	Remove	
404	Colorado blue spruce	<i>Pinus pungens</i>	13	Good	Good	Yes	Remove	
405	Colorado blue spruce	<i>Pinus pungens</i>	16	Good	Good	Yes	Remove	
406	Western redcedar	<i>Thuja plicata</i>	16	Fair	Good	Yes	Remove	Two leaders: 12, 11; small leader to NW; thinning from top down .
407	Western redcedar	<i>Thuja plicata</i>	13	Fair	Good	Yes	Remove	Two leaders: 11, 7; thinning from top down.
408	Western redcedar	<i>Thuja plicata</i>	19	Fair	Good	Yes	Remove	Two leaders: 14, 13; thinning from top down.
409	Douglas fir	<i>Pseudotsuga menziesii</i>	20	Good	Good	Yes	Remove	
410	Douglas fir	<i>Pseudotsuga menziesii</i>	25	Good	Good	Yes	Remove	
411	Western redcedar	<i>Thuja plicata</i>	18	Good	Good	Yes	Remove	
412	Western redcedar	<i>Thuja plicata</i>	15	Good	Good	Yes	Remove	
413	Western redcedar	<i>Thuja plicata</i>	14	Good	Good	Yes	Remove	
414	Colorado blue spruce	<i>Pinus pungens</i>	16	Good	Good	Yes	Remove	
415	Colorado blue spruce	<i>Pinus pungens</i>	14	Good	Good	Yes	Remove	
416	Cottonwood	<i>Populus trichocarpa</i>	9	Good	Good	Yes	Remove	
417	Bigleaf maple	<i>Acer macrophyllum</i>	25	Good	Good	No	Off property, protect from grading	Two leaders: 18, 17; south of barn.
418	Cottonwood	<i>Populus trichocarpa</i>	12	Good	Good	Yes	Remove	Narrow crown.
419	Bigleaf maple	<i>Acer macrophyllum</i>	20	Good	Good	Yes	Remove	Three leaders:13,9,12.
420	Bigleaf maple	<i>Acer macrophyllum</i>	10	Dead	Dead	Yes	Remove	
421	Bigleaf maple	<i>Acer macrophyllum</i>	~32	Fair	Fair	Boundary tree	Preserve	Off property; unable to estimate diameter.
422	Port Orford cedar	<i>Chamaecyparis lawsoniana</i>	20	Good	Good	Boundary tree	Remove	Behind chain link, DF to the west-35
423	Douglas fir	<i>Pseudotsuga menziesii</i>	34	Good	Good	No	Off property, preserve	
424	Douglas fir	<i>Pseudotsuga menziesii</i>	16	Good	Good	No	Off property, preserve	High and narrow crown.
425	Douglas fir	<i>Pseudotsuga menziesii</i>	14	Fair	Fair	No	Off property, preserve	High and narrow crown.
426	Douglas fir	<i>Pseudotsuga menziesii</i>	14	Dead	Dead	No	Off property, preserve	Leaning to N.
427	Douglas fir	<i>Pseudotsuga menziesii</i>	10	Poor	Fair	No	Off property, preserve	21166 dead and less than 8; thin, high and narrow crown.
428	Douglas fir	<i>Pseudotsuga menziesii</i>	18	Good	Fair	No	Off property, preserve	Unbalanced to the SE.
429	Pacific madrone	<i>Arbutus menziesii</i>	16	Good	Fair	No	Remove	Phototropism to S.
430	Pacific madrone	<i>Arbutus menziesii</i>	12	Good	Fair	No	Remove	Phototropism to S.
431	Douglas fir	<i>Pseudotsuga menziesii</i>	17	Good	Good	No	Off property, protect from grading	
432	Douglas fir	<i>Pseudotsuga menziesii</i>	11	Good	Good	No	Off property, protect from grading	
433	Douglas fir	<i>Pseudotsuga menziesii</i>	13	Good	Good	No	Off property, preserve	
434	Douglas fir	<i>Pseudotsuga menziesii</i>	11	Good	Good	No	Off property, protect from grading	
435	Weeping Alaskan cedar	<i>Chamaecyparis nootkatensis</i> 'Pendula'	8	Good	Good	No	Off property, preserve	Two leaders: 7,5.
436	Douglas fir	<i>Pseudotsuga menziesii</i>	15	Good	Good	No	Off property, protect from grading	
437	Douglas fir	<i>Pseudotsuga menziesii</i>	16	Good	Good	No	Off property, protect from grading	
438	Douglas fir	<i>Pseudotsuga menziesii</i>	15	Good	Good	No	Off property, protect from grading	
439	Douglas fir	<i>Pseudotsuga menziesii</i>	15	Good	Good	No	Off property, protect from grading	
440	Douglas fir	<i>Pseudotsuga menziesii</i>	15	Good	Good	No	Off property, preserve	

Tree No.	Common Name	Botanical Name	DBH* (in)	Condition**	Structure**	On Property	Remove or Preserve	Comments
441	Douglas fir	<i>Pseudotsuga menziesii</i>	12	Good	Good	No	Off property, preserve	
442	Douglas fir	<i>Pseudotsuga menziesii</i>	13	Good	Good	No	Off property, protect from grading	
443	Douglas fir	<i>Pseudotsuga menziesii</i>	11	Good	Good	No	Off property, preserve	
444	Scarlet oak	<i>Quercus coccinea</i>	19	Good	Good	No	Off property, preserve	6 red maples less than 8 " to E.
445	Northern red oak	<i>Quercus rubra</i>	8	Good	Good	No/ROW	Preserve	Southern most street tree.
446	Northern red oak	<i>Quercus rubra</i>	10	Good	Good	No/ROW	Preserve	6" Oregon white to E; northern most street tree.
447	Cottonwood	<i>Populus trichocarpa</i>	11	Good	Good	No/ROW	Preserve	Two leaders: 9,8; in between street and fence.

\* DBH (Diameter at Breast Height). The trunk diameter measured at industry standard, 4.5 feet above ground.

\*\* Condition and Structure ratings range from Good, Fair, Poor, Very Poor, to Dead.



REVISIONS

REVISIONS	DATE	DESCRIPTION

DATE	APRIL 2021	PROJ. NO.	20190311
SCALE	AS NOTED	CHECKED	HGK
DRAWN	KAN		

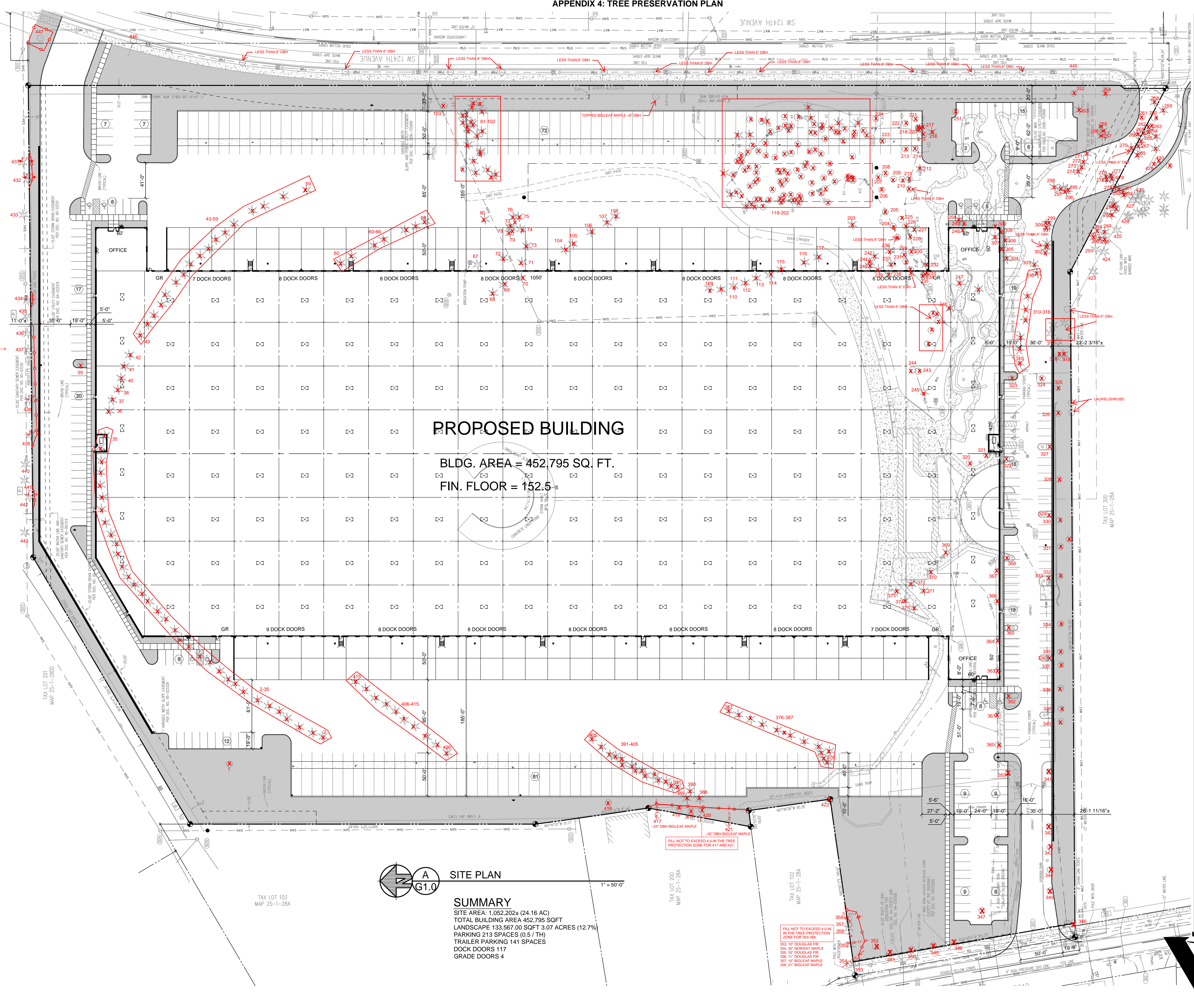
SITE PLAN

G1.0

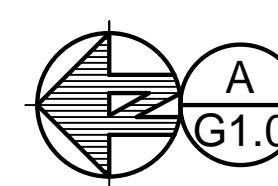
**TREE LEGEND**  
 TREE PROPOSED FOR REMOVAL  
 TREE PROTECTION FENCING  
 TREE MAP PREPARED BY TERAGAN & ASSOCIATES, INC.  
 CHRISTINE JOHNSON, PN-8730A | 971.978.9381 | 7.30.2021

FILL NOT TO EXCEED 4.0 IN THE TREE PROTECTION ZONE FOR 431, 432, 434, 435-439, AND 442.

FILL NOT TO EXCEED 4.0 IN THE TREE PROTECTION ZONE FOR 431, 432, 434, 435-439, AND 442.



**PROPOSED BUILDING**  
 BLDG. AREA = 452,795 SQ. FT.  
 FIN. FLOOR = 152.5



**SITE PLAN**  
**G1.0**  
**SUMMARY**  
 SITE AREA: 1,052,202± (24.16 AC)  
 TOTAL BUILDING AREA 452,795 SQFT  
 LANDSCAPE 133,567.00 SQFT 3.07 ACRES (12.7%)  
 PARKING 213 SPACES (0.51 TH)  
 TRAILER PARKING 141 SPACES  
 DOCK DOORS 117  
 GRADE DOORS 4

FILL NOT TO EXCEED 4.0 IN THE TREE PROTECTION ZONE FOR 353-358.

FILL NOT TO EXCEED 4.0 IN THE TREE PROTECTION ZONE FOR 417 AND 421.

G:\Acad\2019\20190311\0-Drawing\100\_G1.0\_Site\_Plan.dwg/7/16/2021 12:04 PM