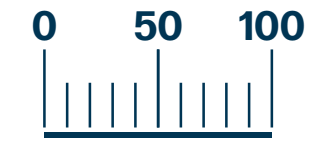


Tonquin Substation

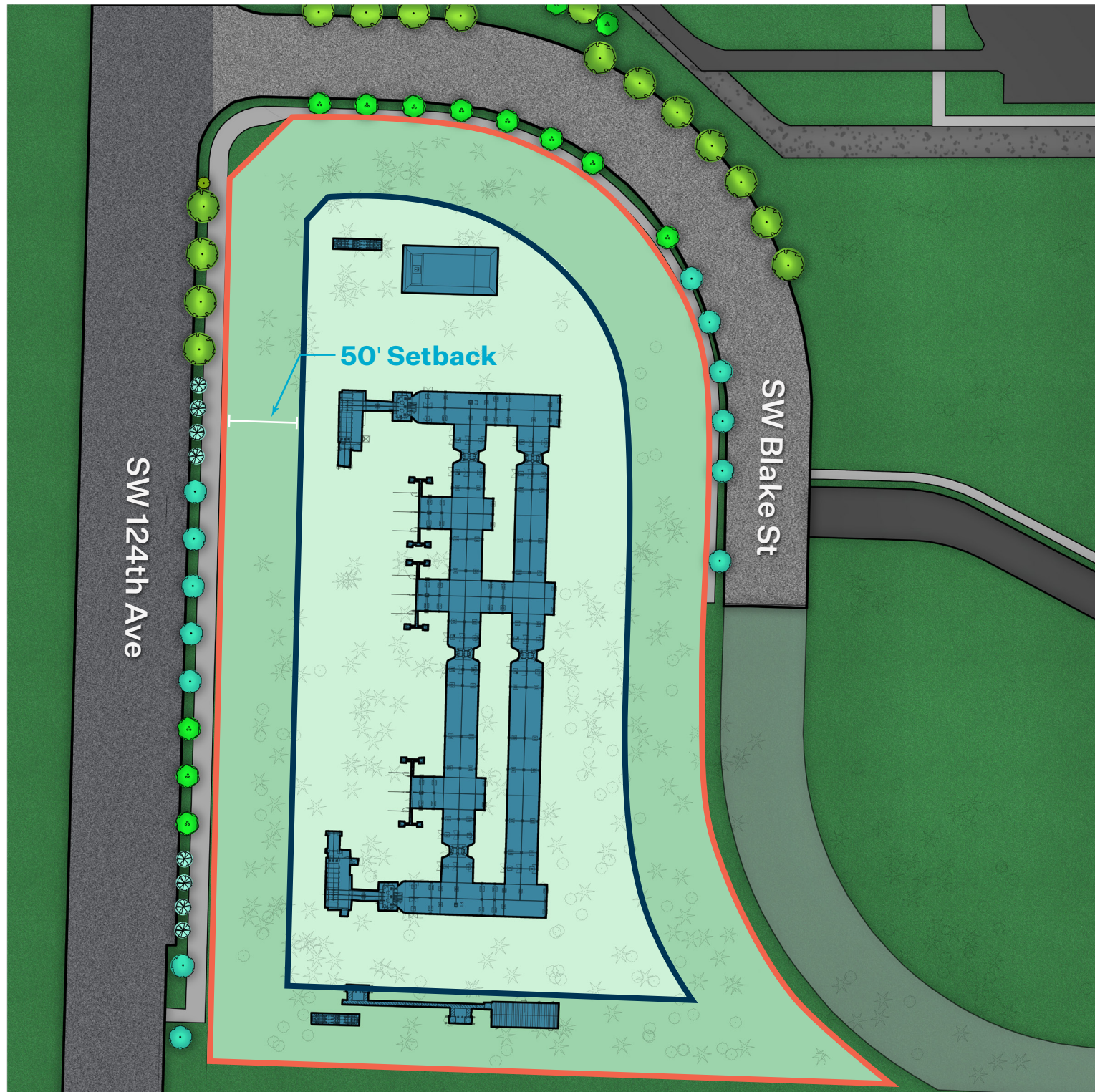
Legend

- Project Boundary
- Setback Boundary

Scale (feet)



50-Foot Setback



Comments:

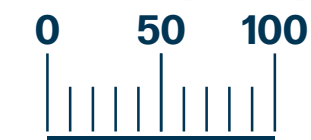
- Developable Area: 95,000 s.f.
- Inadequate circulation within the substation for repairs and emergencies
- All substation equipment does not fit within the fence line
- Substation equipment is too close to fence
- Substation equipment layout would not meet requirements of the National Electric Safety Code (NESC)

Tonquin Substation

Legend

- Project Boundary
- Setback Boundary

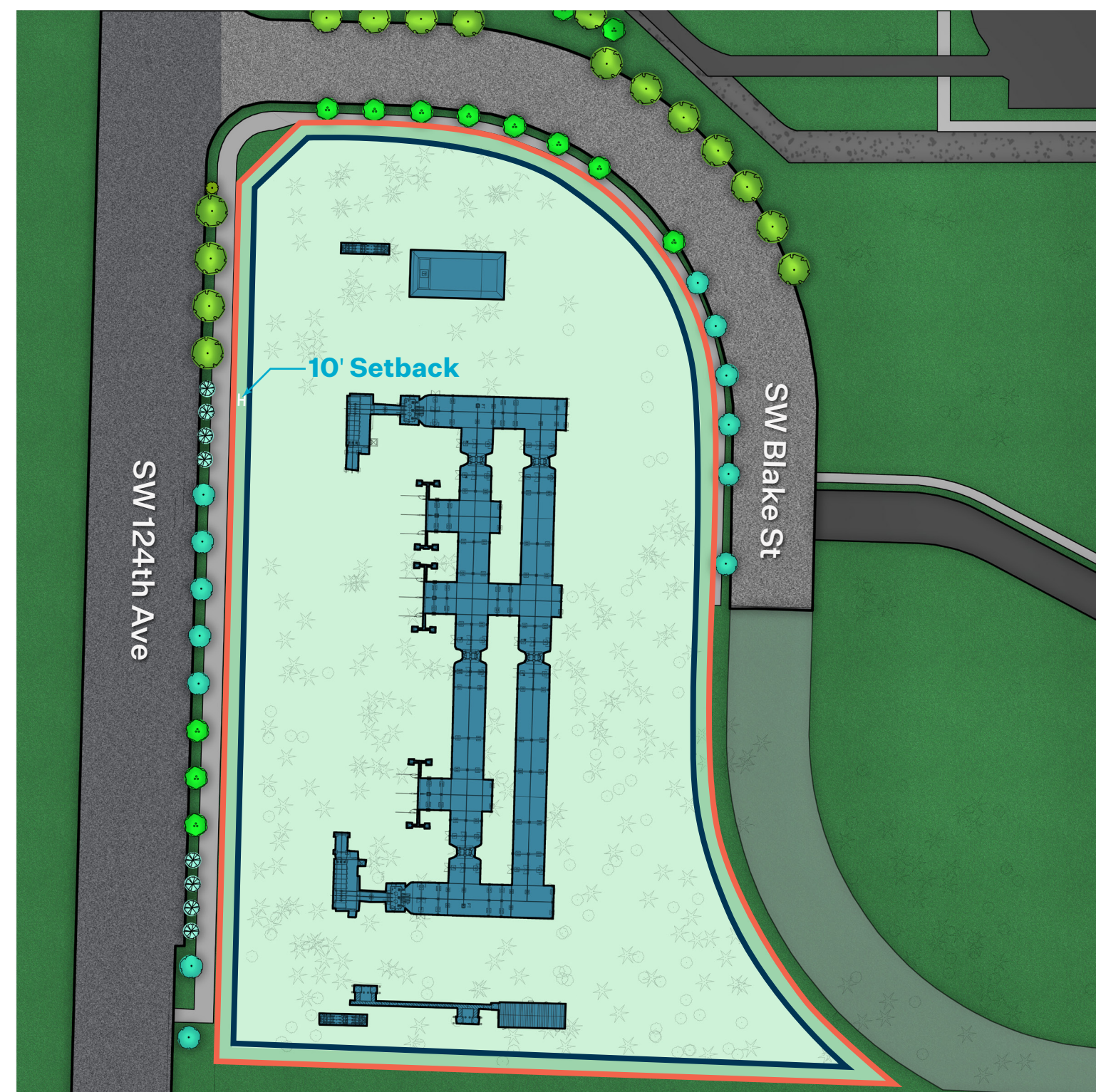
Scale (feet)

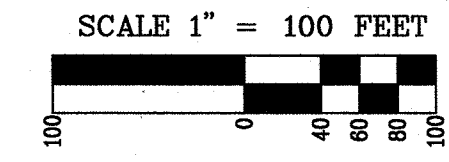
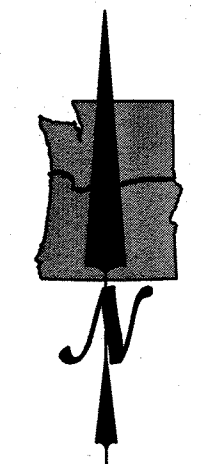
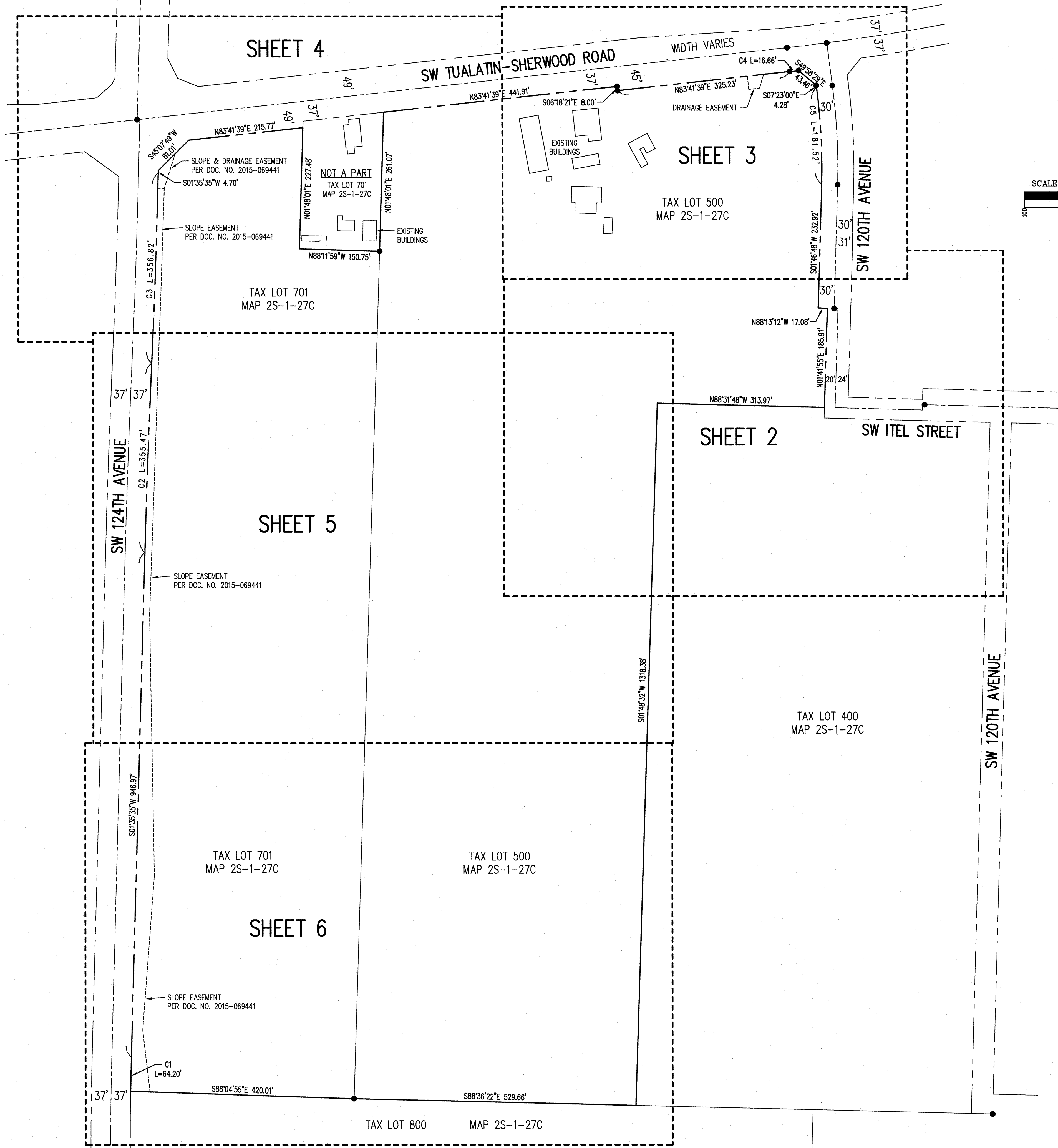


Comments:

- Developable Area: 155,000 s.f.
- Adequate circulation within the substation for repairs and emergencies
- All substation equipment fits within the fence line
- Substation equipment is setback safe distance from fence
- Substation equipment layout and clearances meet minimum requirements of the National Electric Safety Code (NESC)

10-Foot Setback





LEGEND

CONIFEROUS TREE		DECIDUOUS TREE	
FIRE HYDRANT		GAS VALVE	
WATER BLOWOFF		GUY WIRE ANCHOR	
WATER METER		UTILITY POLE	
WATER VALVE		POWER VAULT	
WATER VAULT MANHOLE		POWER JUNCTION BOX	
SANITARY SEWER CLEAN OUT		STREET LIGHT	
SANITARY SEWER MANHOLE		TELEPHONE MANHOLE	
STORM SEWER CATCH BASIN		TELEPHONE/TELEVISION JUNCTION BOX	
STORM SEWER CURB INLET		TELEPHONE/TELEVISION RISER	
STORM SEWER MANHOLE		SIGNAL JUNCTION BOX	
MAILBOX		FOUND SURVEY MONUMENT	
SIGN			

RIGHT-OF-WAY LINE	
BOUNDARY LINE	
PROPERTY LINE	
CENTERLINE	
CURB	
EDGE OF PAVEMENT	
EASEMENT	
FENCE LINE	
GRAVEL EDGE	
POWER LINE	
OVERHEAD WIRE	
TELEPHONE LINE	
GAS LINE	
STORM SEWER LINE	
SANITARY SEWER LINE	
WATER LINE	

CURVE TABLE

CURVE	LENGTH	RADIUS	DELTA ANGLE	CHORD
C1	64.20'	6163.00'	0°35'49"	S01°17'41"W 64.20'
C2	355.47'	19061.59'	1°04'07"	S02°07'38"W 355.46'
C3	356.82'	19135.59'	1°04'06"	N02°07'38"E 356.81'
C4	16.66'	4045.00'	0°14'10"	N83°34'34"E 16.66'
C5	181.52'	1135.00'	9°09'48"	N02°48'06"W 181.33'

- NOTES**
- 1) THE MAJORITY OF THE FIELD SURVEYING FOR THIS MAP WAS COMPLETED JANUARY 4, 2019. A PORTION IN THE SOUTHWEST CORNER OF THE PROPERTY CONTAINS DENSE BRUSH AND IS TO BE SURVEYED IN THE NEAR FUTURE.
 - 2) ELEVATIONS AND CONTOURS ARE BASED ON WASHINGTON COUNTY BENCHMARK NO. 102. THE BENCHMARK IS A BRASS DISK LOCATED AT THE INTERSECTION OF SW CIOLE ROAD AND THE SOUTHERN PACIFIC RAILROAD RIGHT-OF-WAY. IT HAS AN ELEVATION OF 157.30 FEET ON THE NGVD 1929 DATUM. THAT ELEVATION WAS CONVERTED TO THE NAVD 1988 DATUM BY USING THE WASHINGTON COUNTY AVERAGE ADJUSTMENT OF 3.52 FEET. THE BENCHMARK ELEVATION ON THE NAVD 1988 DATUM IS 160.82 FEET.
 - 3) THE BASIS OF BEARINGS FOR THIS SURVEY IS THE OREGON STATE PLANE COORDINATE SYSTEM, NORTH ZONE, NAD(83).
 - 4) RIGHT-OF-WAY WIDTHS ARE BASED ON THE DEDICATION DEEDS, COUNTY TAX ASSESSOR'S MAP AND MULTIPLE RECORDED SURVEYS.
 - 5) THE EASEMENTS SHOWN ON THIS MAP ARE BASED ON THE PRELIMINARY REPORT, PREPARED BY FIDELITY NATIONAL TITLE COMPANY OF OREGON, WITH ORDER NUMBER 45141819773 WITH AN EFFECTIVE DATE OF NOVEMBER 1, 2018 AT 8:00 AM.
 - 6) THE UNDERGROUND UTILITIES ARE BASED ON THE MARKINGS PER LOCATE TICKET NUMBERS 18280911 AND 18291289.
 - 7) WITHIN THE SOUTHERLY PORTION OF TAX LOT 700 WHERE THE TREES ARE LOCATED THERE ARE AREAS OF DENSE BRUSH. THE CLIENT PROVIDED SOME BRUSH REMOVAL TO ACCESS THE TREES, AND AN EFFORT WAS MADE TO PROVIDE A DETAILED TOPOGRAPHY OF THAT AREA. HOWEVER CONTOURS MAY VARY FROM ACTUAL GROUND ELEVATION WITHIN THE REMAINING AREAS OF DENSE BRUSH.

UTILITY STATEMENT

THE UNDERGROUND UTILITIES SHOWN HAVE BEEN LOCATED FROM FIELD SURVEY INFORMATION AND EXISTING DRAWINGS. THE SURVEYOR MAKES NO GUARANTEE THAT THE UNDERGROUND UTILITIES SHOWN COMPRISE ALL SUCH UTILITIES IN THE AREA, EITHER IN SERVICE OR ABANDONED. THE SURVEYOR FURTHER DOES NOT WARRANT THAT THE UNDERGROUND UTILITIES SHOWN ARE IN THE EXACT LOCATION INDICATED ALTHOUGH HE DOES CERTIFY THAT THEY ARE LOCATED AS ACCURATELY AS POSSIBLE FROM INFORMATION AVAILABLE. THE SURVEYOR HAS NOT PHYSICALLY LOCATED THE UNDERGROUND UTILITIES.

SEE SHEETS 2-6 FOR TOPOGRAPHIC INFORMATION
SEE SHEET 7 FOR TREE INFORMATION

ORTHWEST SURVEYING, INC.
1815 NW BUSHY CREEK, SUITE 2090
BEAVERTON, OR, 97006
PH: (503) 848-2127 FAX: (503) 848-2179
Email: west@orthwestsurveying.com

LOCATED IN THE SW 1/4 OF SECTION 27,
TOWNSHIP 2 SOUTH, RANGE 1 WEST, WM.,
CITY OF TUALATIN,
WASHINGTON COUNTY, OREGON

TOPOGRAPHIC SURVEY OREGON
TAX MAP 2S-1-27C

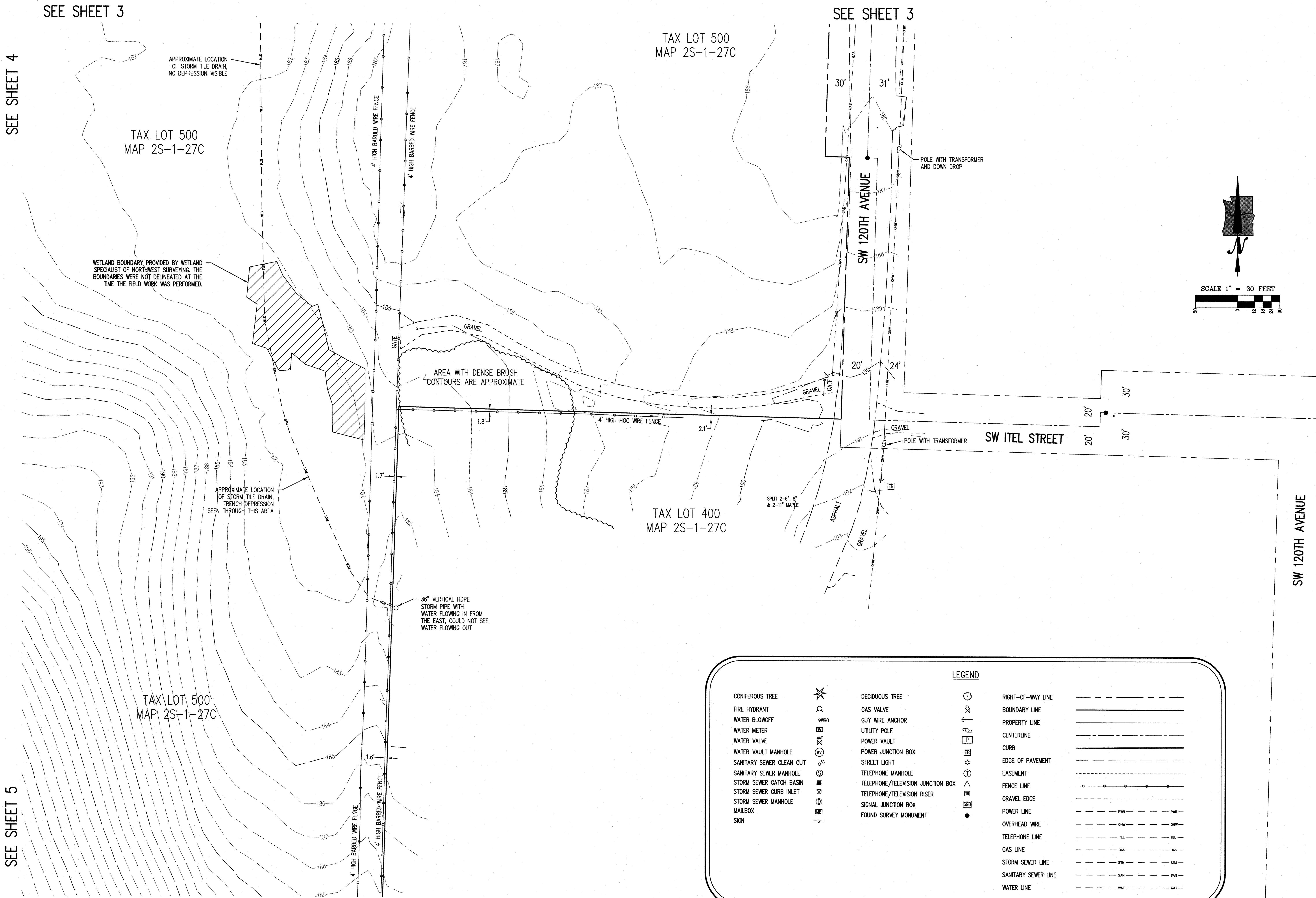
TUALATIN, OREGON
TAX LOTS 500 & 701

DRAWING NO.: 1883 TOPO
SCALE: AS NOTED
DRAWING GENERATED BY: LDZ004
DRAWN BY: CDW
CHECKED BY: CHS
PREPARED FOR:
DREYFUSS+BLACKFORD ARCHITECTURE
3540 FOLSOM BOULEVARD
SACRAMENTO, CA 95816

REVISIONS:
INITIAL RELEASE: JAN. 16, 2019
UPDATE TREES: FEB. 18, 2019

REGISTERED PROFESSIONAL LAND SURVEYOR
Clinton H. Stubbs Jr.
OREGON
JANUARY 15, 2002
CLINTON H. STUBBS JR.
55469LS
RENEWS: 06/30/20

JOB NUMBER
1883
SHEET
1 OF 7



SEE SHEET 4

SEE SHEET 5

SEE SHEET 3

SEE SHEET 3

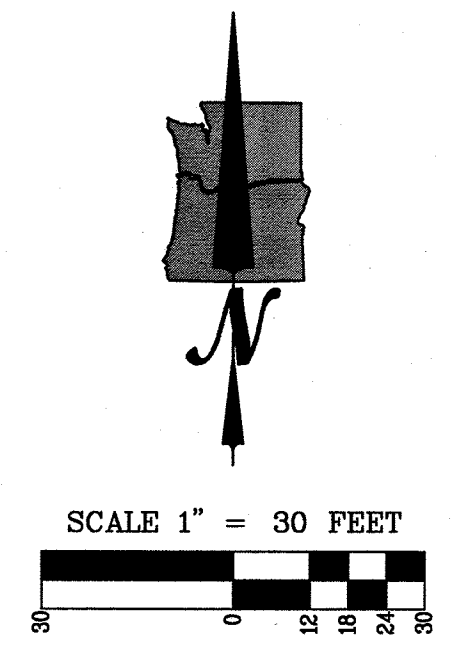
TAX LOT 500
MAP 2S-1-27C

TAX LOT 500
MAP 2S-1-27C

TAX LOT 400
MAP 2S-1-27C

TAX LOT 500
MAP 2S-1-27C

SEE SHEET 5



LEGEND	
CONIFEROUS TREE	DECIDUOUS TREE
FIRE HYDRANT	GAS VALVE
WATER BLOWOFF	GUY WIRE ANCHOR
WATER METER	UTILITY POLE
WATER VALVE	POWER VAULT
WATER VAULT MANHOLE	POWER JUNCTION BOX
SANITARY SEWER CLEAN OUT	STREET LIGHT
SANITARY SEWER MANHOLE	TELEPHONE MANHOLE
STORM SEWER CATCH BASIN	TELEPHONE/TELEVISION JUNCTION BOX
STORM SEWER CURB INLET	TELEPHONE/TELEVISION RISER
STORM SEWER MANHOLE	SIGNAL JUNCTION BOX
MAILBOX	FOUND SURVEY MONUMENT
SIGN	
RIGHT-OF-WAY LINE	BOUNDARY LINE
PROPERTY LINE	CENTERLINE
CURB	EDGE OF PAVEMENT
EASEMENT	FENCE LINE
GRAVEL EDGE	POWER LINE
OVERHEAD WIRE	TELEPHONE LINE
GAS LINE	STORM SEWER LINE
SANITARY SEWER LINE	WATER LINE

NORTHWEST SURVEYING, INC.
1815 NW 169th PLACE, SUITE 2090
BEAVERTON, OR 97006
PH: (503) 848-2127 FAX: (503) 848-2179
EMAIL: nwsurveying@nwsi.com

LOCATED IN THE SW 1/4 OF SECTION 27,
TOWNSHIP 2 SOUTH, RANGE 1 WEST, W.M.,
CITY OF TUALATIN,
WASHINGTON COUNTY, OREGON

TOPOGRAPHIC SURVEY
TUALATIN, OREGON
TAX LOTS 500 & 701

DRAWING NO.: 1883 TOPO
SCALE: AS NOTED
DRAWING GENERATED BY: LD2004
DRAWN BY: CDW
CHECKED BY: CHS
PREPARED FOR:
DREYFUSS-BLACKFORD ARCHITECTURE
3540 FOLSOM BOULEVARD
SACRAMENTO, CA 95816

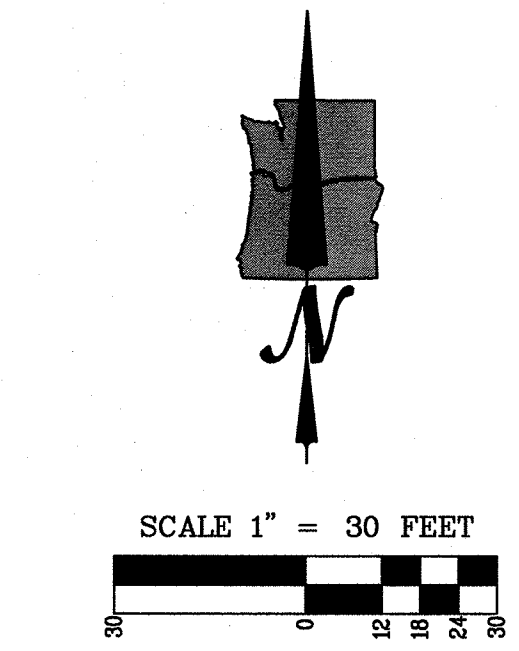
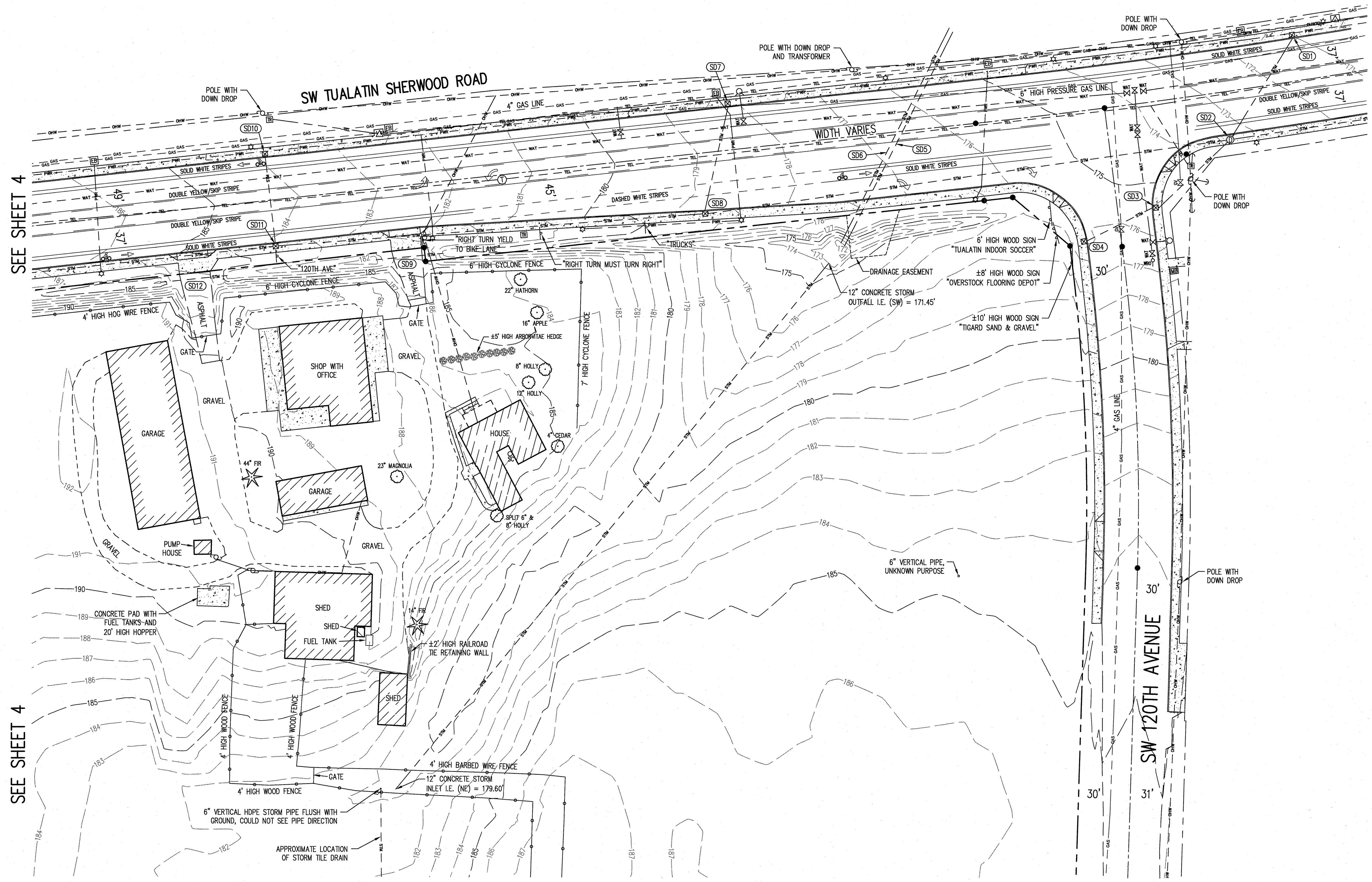
REVISIONS:
INITIAL RELEASE: JAN. 16, 2019
UPDATE TREES: FEB. 18, 2019

REGISTERED
PROFESSIONAL
LAND SURVEYOR
OREGON
JANUARY 15, 2009
CLINTON H. STUBBS JR.
55469LS
RENEWS: 06/30/20

JOB NUMBER
1883

SHEET
2 OF 7

LEGEND			
CONIFEROUS TREE		SANITARY SEWER CLEAN OUT	
FIRE HYDRANT		SANITARY SEWER MANHOLE	
WATER BLOWOFF		STORM SEWER CATCH BASIN	
WATER METER		STORM SEWER CURB INLET	
WATER VALVE		STORM SEWER MANHOLE	
WATER VAULT MANHOLE		MAILBOX	
RIGHT-OF-WAY LINE		SIGN	
BOUNDARY LINE		CURB	
PROPERTY LINE		EDGE OF PAVEMENT	
CENTERLINE		EASEMENT	
		FENCE LINE	
		DECIDUOUS TREE	
		GAS VALVE	
		GUY WIRE ANCHOR	
		UTILITY POLE	
		POWER VAULT	
		POWER JUNCTION BOX	
		STREET LIGHT	
		TELEPHONE MANHOLE	
		TELEPHONE/TELEVISION JUNCTION BOX	
		TELEPHONE/TELEVISION RISER	
		SIGNAL JUNCTION BOX	
		FOUND SURVEY MONUMENT	
		GRAVEL EDGE	
		POWER LINE	
		OVERHEAD WIRE	
		TELEPHONE LINE	
		GAS LINE	
		STORM SEWER LINE	
		SANITARY SEWER LINE	
		WATER LINE	



STORM SEWER INFORMATION

- SD1 CURB INLET
RIM = 171.85'
INLET ELEV. = 170.97'
12" I.E. OUT (SW) = 166.9'
- SD2 MANHOLE
RIM = 173.88'
12" I.E. IN (SW) = 169.7'
12" I.E. IN (NE) = 166.3'
24" I.E. IN (W) = 166.5'
24" I.E. OUT (E) = 166.2'
- SD3 CURB INLET
RIM = 176.07'
INLET ELEV. = 175.33'
12" I.E. IN (SW) = 170.3'
12" I.E. OUT (NE) = 170.2'
- SD4 CURB INLET
RIM = 176.53'
INLET ELEV. = 175.87'
12" I.E. OUT (NE) = 171.4'
- SD5 CONCRETE STORM CULVERT
21" I.E. IN (SW) = 171.14'
21" I.E. OUT (NE) = 167.66'
- SD6 CONCRETE STORM CULVERT
21" I.E. IN (SW) = 171.21'
21" I.E. OUT (NE) = 167.58'
- SD7 CURB INLET
RIM = 178.73'
INLET ELEV. = 178.11'
10" I.E. OUT (SW) = 175.1'
- SD8 CURB INLET
RIM = 179.32'
10" I.E. IN (N) = 174.7'
24" I.E. IN (W) = 167.6'
24" I.E. OUT (E) = 167.5'
- SD9 CONCRETE STORM CULVERT
21" I.E. IN (W) = 180.93'
21" I.E. OUT (E) = 180.30'
- SD10 CURB INLET
RIM = 184.52'
INLET ELEV. = 183.83'
10" I.E. OUT (S) = 180.1'
- SD11 CURB INLET
RIM = 184.48'
INLET ELEV. = 183.8'
10" I.E. IN (N) = 179.6'
24" I.E. IN (W) = 176.6'
24" I.E. OUT (E) = 176.2'
- SD12 CONCRETE STORM CULVERT
21" I.E. IN (W) = 184.17'
21" I.E. OUT (E) = 182.82'

SEE SHEET 4

SEE SHEET 4

SEE SHEET 2

SEE SHEET 2

ORTHWEST SURVEYING, INC.
1815 NW 186th PLACE, SUITE 2090
BEAVERTON, OR, 97006
PH: (503) 848-2127 FAX: (503) 848-2179
EMAIL: info@orthwestsurveying.com

LOCATED IN THE SW 1/4 OF SECTION 27,
TOWNSHIP 2 SOUTH, RANGE 1 WEST, W.M.,
CITY OF TUALATIN, OREGON
WASHINGTON COUNTY.

TOPOGRAPHIC SURVEY OREGON
TAX MAP 25-1-27C
TUALATIN, OREGON
TAX LOTS 500 & 701

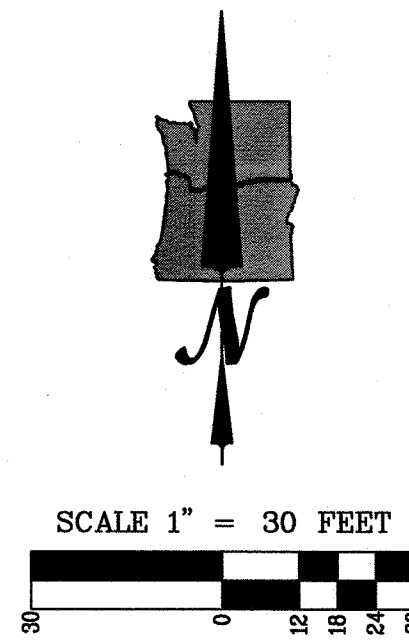
DRAWING NO.: 1883 TOPO
SCALE: AS NOTED
DRAWING GENERATED BY: LD2004
DRAWN BY: CDW
CHECKED BY: CHS
PREPARED FOR:
DREYFUS+BLACKFORD ARCHITECTURE
3540 FOLSOM BOULEVARD
SACRAMENTO, CA 95816

REVISIONS:
INITIAL RELEASE: JAN. 16, 2019
UPDATE TREES: FEB. 18, 2019

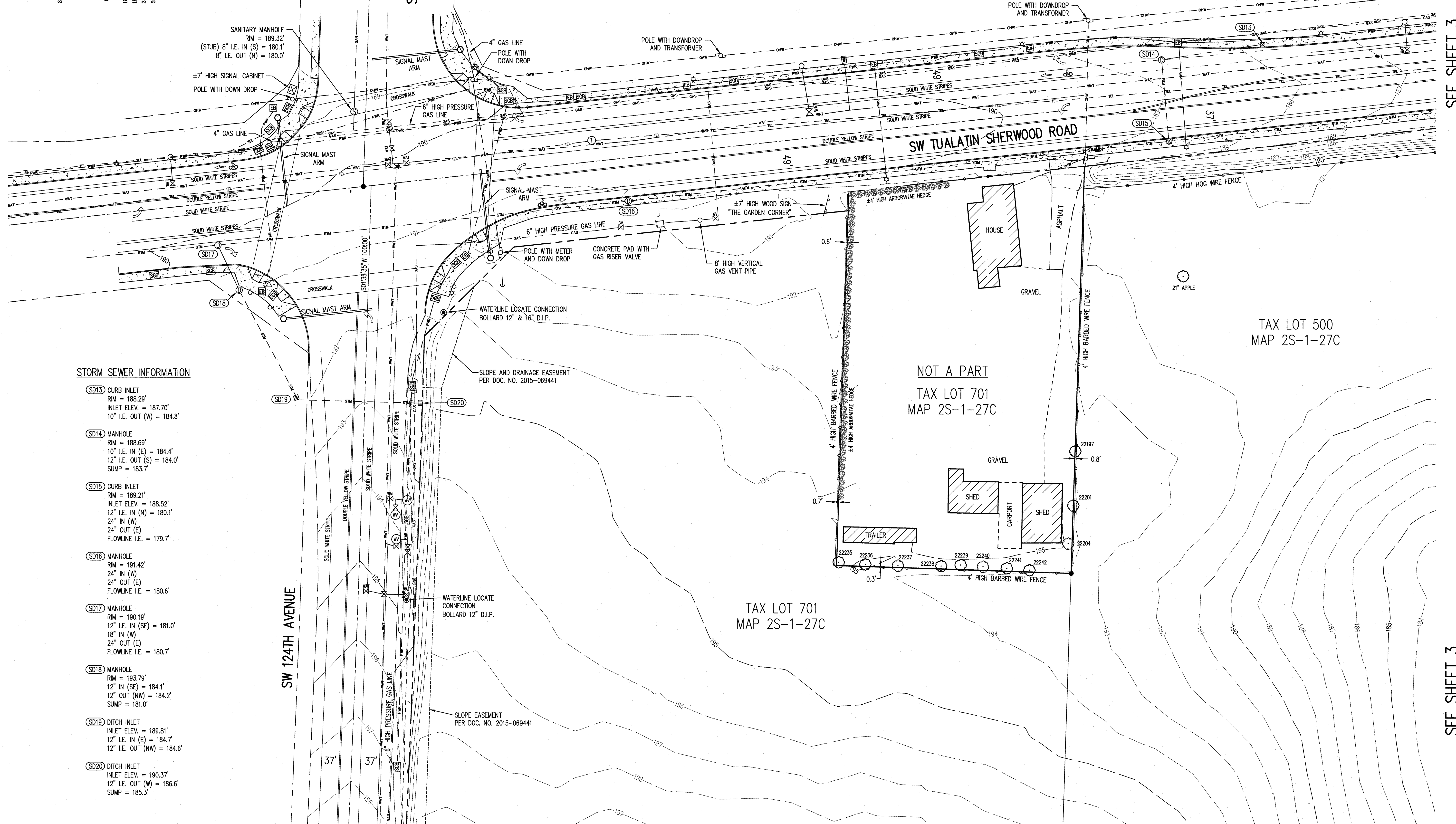
REGISTERED PROFESSIONAL LAND SURVEYOR
Clark Stubbbs
OREGON
JANUARY 15, 2002
CLINTON H. STUBBS JR.
55469LS
RENEWS: 06/30/20

JOB NUMBER
1883

SHEET
3 OF 7



LEGEND	
CONIFEROUS TREE	★
FIRE HYDRANT	⊕
WATER BLOWOFF	⊙
WATER METER	⊗
WATER VALVE	⊘
WATER VAULT MANHOLE	⊚
RIGHT-OF-WAY LINE	— — — — —
BOUNDARY LINE	— — — — —
PROPERTY LINE	— — — — —
CENTERLINE	— — — — —
SANITARY SEWER CLEAN OUT	⊙
SANITARY SEWER MANHOLE	⊚
STORM SEWER CATCH BASIN	⊚
STORM SEWER CURB INLET	⊚
STORM SEWER MANHOLE	⊚
MAILBOX	⊚
SIGN	⊚
CURB	— — — — —
EDGE OF PAVEMENT	— — — — —
EASEMENT	— — — — —
FENCE LINE	— — — — —
DECIDUOUS TREE	⊙
GAS VALVE	⊙
GUY WIRE ANCHOR	⊙
UTILITY POLE	⊙
POWER VAULT	⊙
POWER JUNCTION BOX	⊙
GRAVEL EDGE	— — — — —
POWER LINE	— — — — —
OVERHEAD WIRE	— — — — —
TELEPHONE LINE	— — — — —
STREET LIGHT	☆
TELEPHONE MANHOLE	⊙
TELEPHONE/TELEVISION JUNCTION BOX	⊙
TELEPHONE/TELEVISION RISER	⊙
SIGNAL JUNCTION BOX	⊙
FOUND SURVEY MONUMENT	●
GAS LINE	— — — — —
STORM SEWER LINE	— — — — —
SANITARY SEWER LINE	— — — — —
WATER LINE	— — — — —



STORM SEWER INFORMATION

- SD13 CURB INLET
RIM = 188.29'
INLET ELEV. = 187.70'
10" I.E. OUT (W) = 184.8'
- SD14 MANHOLE
RIM = 188.69'
10" I.E. IN (E) = 184.4'
12" I.E. OUT (S) = 184.0'
SUMP = 183.7'
- SD15 CURB INLET
RIM = 189.21'
INLET ELEV. = 188.52'
12" I.E. IN (N) = 180.1'
24" IN (W)
24" OUT (E)
FLOWLINE I.E. = 179.7'
- SD16 MANHOLE
RIM = 191.42'
24" IN (W)
24" OUT (E)
FLOWLINE I.E. = 180.6'
- SD17 MANHOLE
RIM = 190.19'
12" I.E. IN (SE) = 181.0'
18" IN (W)
24" OUT (E)
FLOWLINE I.E. = 180.7'
- SD18 MANHOLE
RIM = 193.79'
12" IN (SE) = 184.1'
12" OUT (NW) = 184.2'
SUMP = 181.0'
- SD19 DITCH INLET
INLET ELEV. = 189.81'
12" I.E. IN (E) = 184.7'
12" I.E. OUT (NW) = 184.6'
- SD20 DITCH INLET
INLET ELEV. = 190.37'
12" I.E. OUT (W) = 186.6'
SUMP = 185.3'

SEE SHEET 5

SEE SHEET 5

SEE SHEET 3

SEE SHEET 3

NORTHWEST SURVEYING, INC.
1815 NW LEGION, SUITE 2090
BEAVERTON, OR, 97005
PH: (503) 648-2127 FAX: (503) 648-2179
EMAIL: info@northwestsurveying.com

LOCATED IN THE SW 1/4 OF SECTION 27,
TOWNSHIP 2 SOUTH, RANGE 1 WEST, W.M.,
CITY OF TUALATIN, OREGON
WASHINGTON COUNTY, OREGON

TOPOGRAPHIC SURVEY OREGON
TAX MAP 2S-1-27C
TUALATIN, OREGON
TAX LOTS 500 & 701

DRAWING NO.: 1883 TOPO
SCALE: AS NOTED
DRAWING GENERATED BY: LD2004
DRAWN BY: CDW
CHECKED BY: CHS
PREPARED FOR:
DREYFUSS-BLACKFORD ARCHITECTURE
3540 FOLSOM BOULEVARD
SACRAMENTO, CA 95816

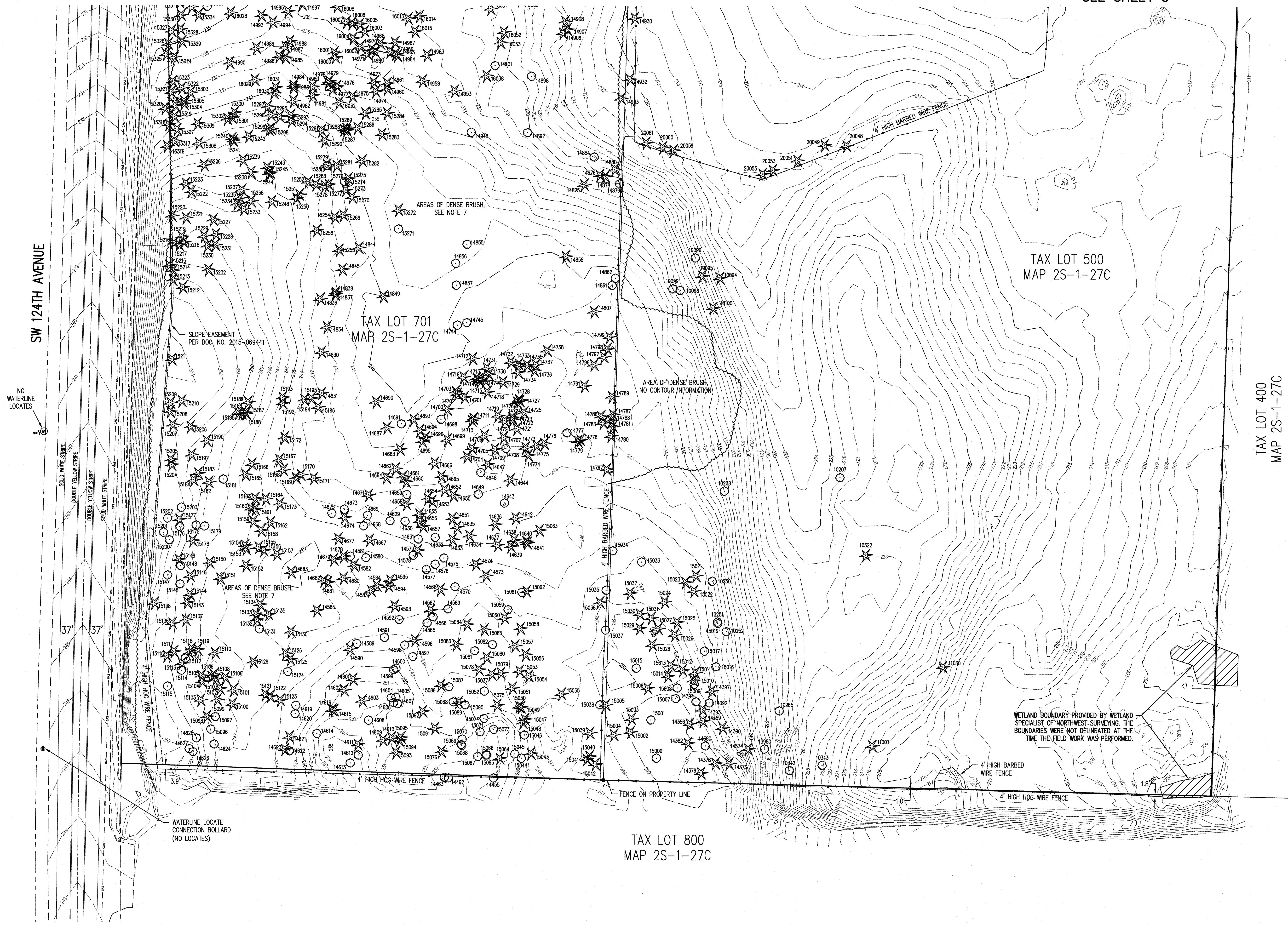
REVISIONS:
INITIAL RELEASE: JAN. 16, 2019
UPDATE TREES: FEB. 18, 2019

REGISTERED PROFESSIONAL LAND SURVEYOR
Clinton H. Stubbs Jr.
OREGON
JANUARY 15, 2002
CLINTON H. STUBBS JR.
55469LS
RENEWS: 06/30/20

JOB NUMBER
1883
SHEET
4 OF 7

SEE SHEET 5

SEE SHEET 5



NORTHWEST SURVEYING, INC.
 1815 NW 169th PLACE, SUITE 2090
 BEAVERTON, OR 97006
 PH: (503) 848-2127 FAX: (503) 848-2179
 EMAIL: nwsurveying@nwsi.com

LOCATED IN THE SW 1/4 OF SECTION 27,
 TOWNSHIP 2 SOUTH, RANGE 1 WEST, W.M.,
 CITY OF TUALATIN,
 WASHINGTON COUNTY, OREGON

TOPOGRAPHIC SURVEY
TUALATIN, OREGON
 TAX LOTS 500 & 701

DRAWING NO.: 1883 TOPO
 SCALE: AS NOTED
 DRAWING GENERATED BY: LD2004
 DRAWN BY: CDW
 CHECKED BY: CHS
 PREPARED FOR:
 DREYFUS+BLACKFORD ARCHITECTURE
 3540 FOLSOM BOULEVARD
 SACRAMENTO, CA 95816

REVISIONS:
 INITIAL RELEASE: JAN. 16, 2019
 UPDATE TREES: FEB. 18, 2019

REGISTERED PROFESSIONAL LAND SURVEYOR

 OREGON
 JANUARY 15, 2002
 CLINTON H. STUBBS JR.
 55469LS
 RENEWS: 06/30/20

JOB NUMBER
1883
 SHEET
6 OF 7

TREE INFORMATION

10094		BUCKTHORN
10095		BUCKTHORN
10096	14"	MADRONE
10098	9"	DOGWOOD
10099	14"	MADRONE
10100	5"	FIR
10207	14"	MADRONE
10208	11"	DECIDUOUS
10250	14"	MADRONE
10251	14"	MADRONE
10252	11"	MADRONE
10265	SPLIT 14" & 16"	MADRONE
10322	SPLIT 5" & 7"	FIR
10342	SPLIT 12" & 17"	MADRONE
10343	22"	MADRONE
10980	7"	HOLLY
10985	19"	MADRONE
11007	SPLIT 2-6"	FIR
11030	13"	FIR
11382	13" (DEAD)	FIR
11386	43"	FIR
11424	SPLIT 6", 6", 8" & 2-11"	MAPLE
12129	8"	HOLLY
12134	8"	HOLLY
12147	22"	HAWTHORN
12149	16"	APPLE
14374	14"	FIR
14376	17"	FIR
14378	18"	FIR
14379	11"	FIR
14380	20"	MADRONE
14382	9"	FIR
14386	11"	FIR
14389	6"	FIR
14390	17"	FIR
14392	16"	MADRONE
14393	6"	FIR
14394	SPLIT 12" & 13"	MADRONE
14397	8"	HOLLY
14455	8"	MADRONE
14462	10"	MADRONE
14463	11"	MADRONE
14565	9"	MADRONE
14566	12"	MADRONE
14567	6"	FIR
14568	8"	FIR
14569	16"	MADRONE

14570	10"	MADRONE
14573	6"	FIR
14574	10"	FIR
14575	6"	MADRONE
14576	9"	MADRONE
14577	10"	MADRONE
14578	12"	MADRONE
14579	8"	FIR
14580	13"	MADRONE
14581	9"	MADRONE
14582	14"	FIR
14583	7"	FIR
14584	9"	FIR
14585	10"	FIR
14589	12"	MADRONE
14590	15"	OAK
14591	SPLIT 10" & 12"	MADRONE
14592	7 10	MADRONE
14593	11"	FIR
14594	6"	FIR
14595	7"	FIR
14596	16"	FIR
14597	10"	MADRONE
14598	12"	MADRONE
14599	SPLIT 7" & 10"	OAK
14600	11"	OAK
14601	8"	FIR
14602	10"	FIR
14603	9"	FIR
14604	8"	MADRONE
14605	6"	MADRONE
14606	9"	MADRONE
14607	SPLIT 6" & 10"	MADRONE
14608	12"	MADRONE
14609	6"	FIR
14610	6"	FIR
14611	11"	FIR
14612	SPLIT 9" & 13"	MADRONE
14613	12"	MADRONE
14614	13"	MADRONE
14615	6"	FIR
14616	6"	FIR
14619	13"	MADRONE
14620	13"	MADRONE
14621	8"	FIR
14622	12"	MADRONE

14623	6"	BUCKTHORN
14624	12"	MADRONE
14626	14"	MADRONE
14627	7"	MADRONE
14628	10"	MADRONE
14629	9"	MADRONE
14630	SPLIT 2-10"	MADRONE
14631	10"	MADRONE
14632	13"	MADRONE
14633	6"	FIR
14634	7"	FIR
14635	8"	FIR
14636	10"	FIR
14637	8"	FIR
14638	SPLIT 6" & 8"	FIR
14639	7"	FIR
14640	7"	FIR
14641	6"	FIR
14642	8"	FIR
14643	18"	MADRONE
14644	4"	FIR
14647	7"	FIR
14648	13"	MADRONE
14649	15"	MADRONE
14650	6"	FIR
14651	6"	FIR
14652	10"	FIR
14653	8"	FIR
14654	9"	FIR
14655	7"	FIR
14656	7"	FIR
14657	10"	FIR
14658	8"	FIR
14659	13"	MADRONE
14660	10"	FIR
14661	6"	FIR
14662	8"	FIR
14663	10"	FIR
14664	9"	FIR
14665	11"	FIR
14666	8"	FIR
14667	7"	FIR
14668	11"	MADRONE
14669	10"	MADRONE
14671	7"	FIR
14673	6"	MADRONE

14674	5"	FIR
14675	10"	MADRONE
14677	8"	FIR
14678	6"	FIR
14679	9"	FIR
14680	8"	FIR
14681	7"	FIR
14682	7"	FIR
14683	6"	FIR
14687	6"	BUCKTHORN
14690	6"	FIR
14691	12"	BIRCH
14693	7"	FIR
14694	7"	FIR
14695	9"	FIR
14696	9"	FIR
14698	SPLIT 5", 6" & 7"	MADRONE
14699	9"	FIR
14700	7 10	MADRONE
14701	8"	FIR
14702	6"	FIR
14703	9"	FIR
14704	7"	FIR
14705	7"	FIR
14706	6"	FIR
14707	9"	FIR
14708	9"	MADRONE
14709	6"	FIR
14710	10"	FIR
14711	7"	FIR
14712	8"	FIR
14713	6"	FIR
14714	7"	FIR
14715	7"	FIR
14716	9"	FIR
14717	6"	FIR
14718	10"	FIR
14719	10"	FIR
14720	7"	FIR
14721	10"	FIR
14722	6"	WILLOW
14723	9"	FIR
14724	7"	FIR
14725	11"	MADRONE
14726	6"	FIR
14727	10"	FIR

14728	7"	FIR
14729	8"	FIR
14730	6"	FIR
14731	10"	FIR
14732	10"	FIR
14733	7"	FIR
14734	10"	FIR
14735	9"	FIR
14736	8"	FIR
14737	13"	FIR
14738	14"	FIR
14744	9"	MADRONE
14745	SPLIT 7" & 12"	MADRONE
14767	13"	FIR
14773	7"	FIR
14774	SPLIT 6" & 7"	FIR
14775	7 8	FIR
14776	8"	FIR
14777	14"	MAPLE
14778	11"	FIR
14779	6"	FIR
14780	12"	FIR
14781	8"	FIR
14783	11"	FIR
14786	9"	FIR
14787	10"	FIR
14788	9"	FIR
14789	11"	FIR
14791	15"	FIR
14796	13"	FIR
14797	15"	FIR
14798	7"	FIR
14799	6"	FIR
14807	11"	FIR
14830	13"	FIR
14831	6"	FIR
14834	15"	FIR
14836	10"	FIR
14837	11"	FIR
14838	14"	FIR
14844	8"	FIR
14845	11"	FIR
14849	SPLIT 15" & 22"	OAK
14855	9"	MADRONE
14856	12"	MADRONE
14857	7"	MADRONE

14858	13"	FIR
14861	11"	MADRONE
14862	11"	MADRONE
14875	9"	FIR
14876	7"	FIR
14878	6"	FIR
14879	13"	MADRONE
14880	21"	FIR
14884	8"	OAK
14892	13"	MADRONE
14898	8"	MAPLE
14901	SPLIT 8" & 10"	WILLOW
14906	SPLIT 6" & 14"	MADRONE
14907	13"	FIR
14908	SPLIT 6" & 11"	FIR
14924	17"	WILLOW
14927	15"	FIR
14928	11"	FIR
14929	18"	FIR
14930	17"	FIR
14932	16"	FIR
14933	24"	FIR
14948	SPLIT 6", 7" & 8"	MADRONE
14953	17"	FIR
14958	12"	FIR
14960	13"	FIR
14961	8"	FIR
14963	17"	FIR
14964	9"	FIR
14965	10"	FIR
14966	6"	FIR
14967	13"	FIR
14968	10"	FIR
14969	11"	FIR
14970	6"	FIR
14971	10"	FIR
14973	13"	FIR
14974	11"	FIR
14975	10"	FIR
14976	7"	FIR
14977	7"	FIR
14978	6"	FIR
14979	SPLIT 2-6"	FIR
14980	9"	FIR
14981	12"	FIR
14982	11"	FIR

14983	6"	FIR
14984	8"	FIR
14985	12"	FIR
14986	9"	FIR
14987	6"	FIR
14988	9"	FIR
14989	12"	FIR
14990	14"	FIR
14993	12"	FIR
14994	10"	FIR
14995	12"	FIR
14997	10"	FIR
14998	11"	FIR
15000	11"	MADRONE
15001	21"	OAK
15002	6"	FIR
15003	6"	PINE
15004	6"	PINE
15005	23"	FIR
15006	10"	FIR
15007	SPLIT 7" & 16"	MADRONE
15008	SPLIT 6" & 16"	MADRONE
15009	8"	MADRONE
15010	6"	FIR
15011	6"	FIR
15012	6"	FIR
15013	13"	FIR
15014	8" (DEAD)	FIR
15015	SPLIT 6" & 7"	MAPLE
15016	SPLIT 6" & 13"	MADRONE
15017	22"	MADRONE
15018	12"	MADRONE
15019	13"	FIR
15020	16"	MADRONE
15021	13"	MADRONE
15022	9"	FIR
15023	8"	FIR
15024	6"	FIR
15025	8"	FIR
15026	9"	FIR
15027	14"	FIR
15028	7"	FIR
15029	15"	FIR
15030	6"	FIR
15031	12"	FIR
15032	7"	FIR

15033	16"	MADRONE
15034	18"	MADRONE
15035	6"	DECIDUOUS
15036	7"	FIR
15037	16"	MADRONE
15038	11"	MADRONE
15039	8"	FIR
15040	7"	FIR
15041	7"	FIR
15042	7"	FIR
15043	11"	FIR
15044	8"	MADRONE
15045	12"	MADRONE
15046	13"	MADRONE
15047	6"	FIR
15048	6"	FIR
15049	7"	FIR
15050	9"	FIR
15051	11"	FIR
15052	10"	MADRONE
15053	7"	FIR
15054	6"	FIR
15055	9"	FIR
15056	12"	FIR
15057	6"	FIR
15058	9"	FIR
15059	12"	MADRONE
15060	8"	FIR
15061	SPLIT 2-12"	MADRONE
15062	6"	FIR
15063	10"	FIR
15064	7"	FIR
15065	10"	MADRONE
15066	10"	MADRONE
15067	12"	MADRONE
15068	9"	MADRONE
15069	6"	MADRONE
15070	12"	MADRONE
15071	8"	MADRONE
15072	9"	MADRONE
15073	7"	MADRONE
15074	10"	MADRONE
15075	6"	PINE
15076	8"	MADRONE
15077	6"	FIR
15078	6"	FIR

15079	7"	FIR
15080	15"	FIR
15081	11"	MADRONE
15082	10"	MADRONE
15083	9"	FIR
15084	8"	FIR
15085	10"	FIR
15086	9"	FIR
15087	11"	MADRONE
15088	13"	MADRONE
15089	14"	FIR
15090	SPLIT 10" & 12"	MADRONE
15091	7"	FIR
15092	8"	FIR
15093	9"	FIR
15094	6"	HOLLY
15095	8"	HEMLOCK
15096	9"	MADRONE
15097	8"	MADRONE
15098	9"	FIR
15099	9"	FIR
15100	7"	FIR
15101	8"	FIR
15102	9"	FIR
15103	6"	FIR
15104	7"	FIR
15105	7"	FIR
15106	8"	FIR
15107	6"	FIR
15108	6"	FIR
15109	13"	FIR
15110	8"	FIR
15111	9"	FIR
15112	8"	MADRONE
15113	6"	FIR
15114	SPLIT 6" & 8"	MADRONE
15115	11"	MADRONE
15116	7"	FIR
15117	14"	FIR
15118	6"	FIR
15119	6"	FIR
15121	7"	FIR
15122	7"	FIR
15123	7"	FIR
15124	10"	MADRONE
15125	9"	FIR

15126	6"	FIR
15129	9"	FIR
15130	SPLIT 6" & 7"	FIR
15131	SPLIT 6" & 14"	MADRONE
15132	6"	FIR</