

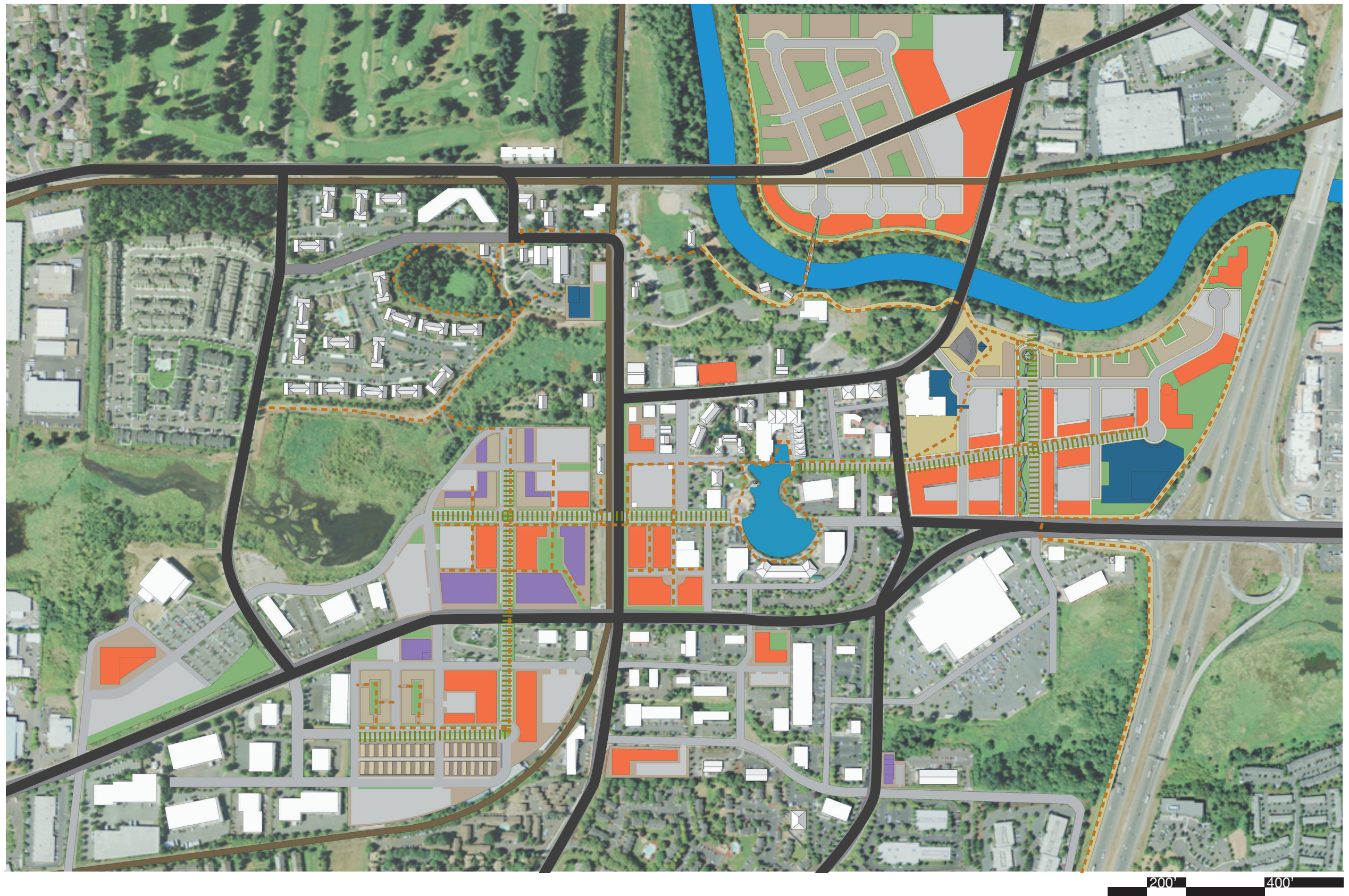
fifty year vision

THE CITY OF TUALATIN: LOCAL ASPIRATIONS
GROWING AN URBAN TOWN CENTER

STASTNYBRUN ARCHITECTS
January 2010

Key

- | | | |
|--|--|---|
| Future Buildings | Surface Parking | Plaza Space |
| Arterial Roads | Green Space | Water |
| Secondary Roads | Existing Buildings | |



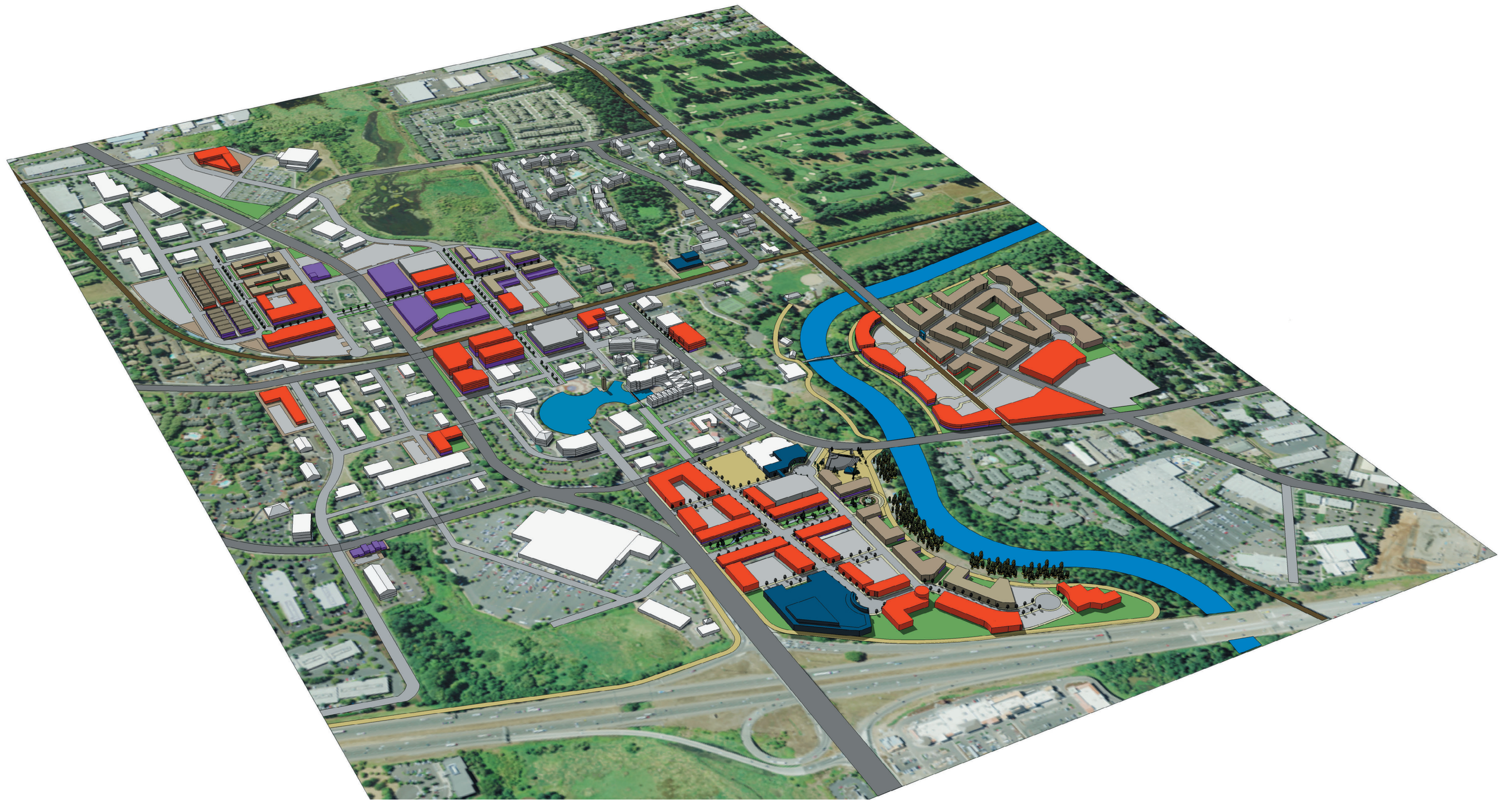
circulation systems

THE CITY OF TUALATIN: LOCAL ASPIRATIONS
GROWING AN URBAN TOWN CENTER

STASTNYBRUN ARCHITECTS
January 2010

Key

- | | |
|--|---|
|  Green Street |  Pedestrian Pathways |
|  Arterial Street |  Train Line |
|  Secondary Street |  Waterway |



overview one: uses

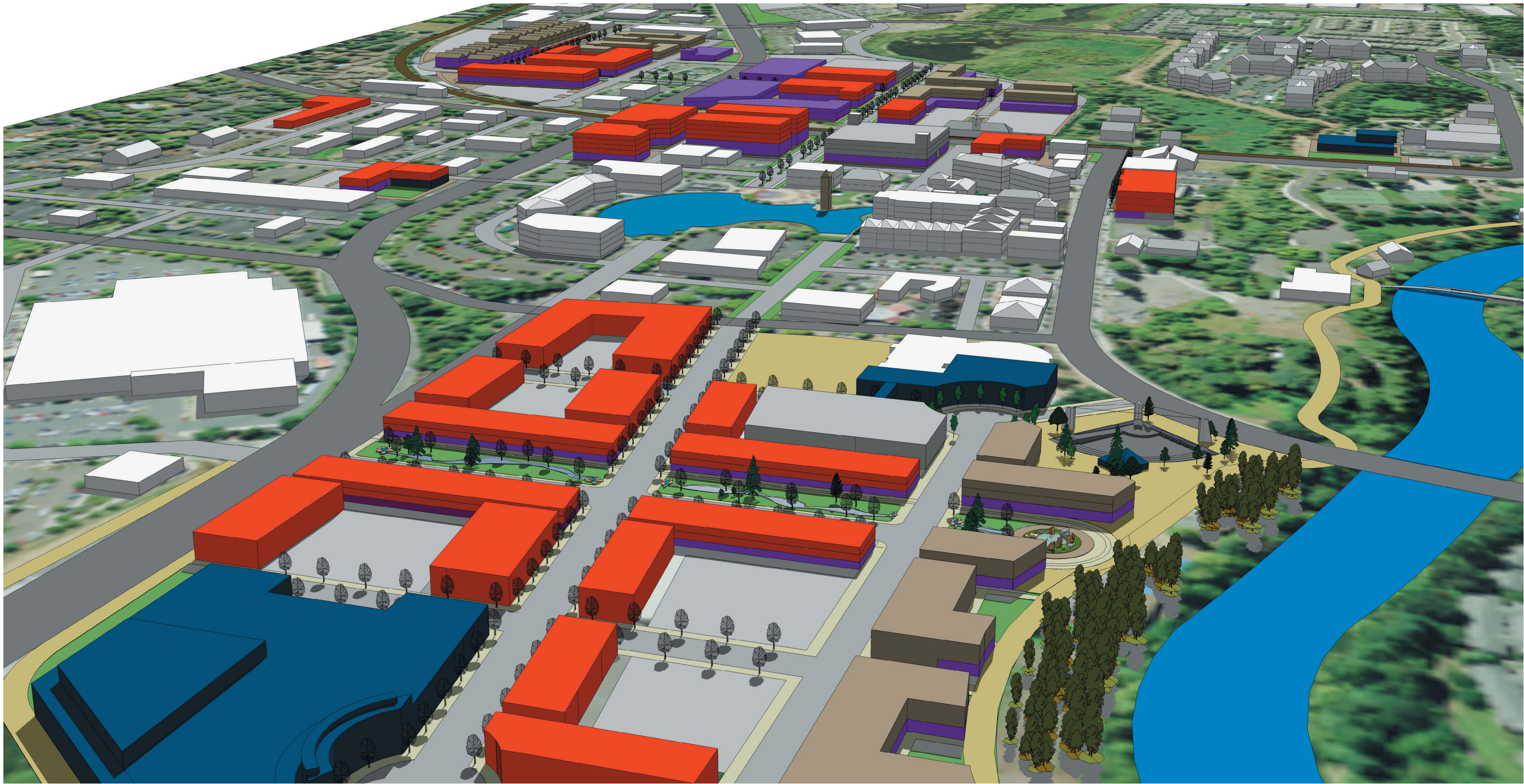
THE CITY OF TUALATIN: LOCAL ASPIRATIONS
GROWING AN URBAN TOWN CENTER



STASTNYBRUN ARCHITECTS
January 2010

Key

- | | |
|--|--|
| Retail | Structure/Surface Parking |
| Housing | Existing Buildings |
| Office | Plaza/Path |
| Civic/Entertainment | |



overview two: uses

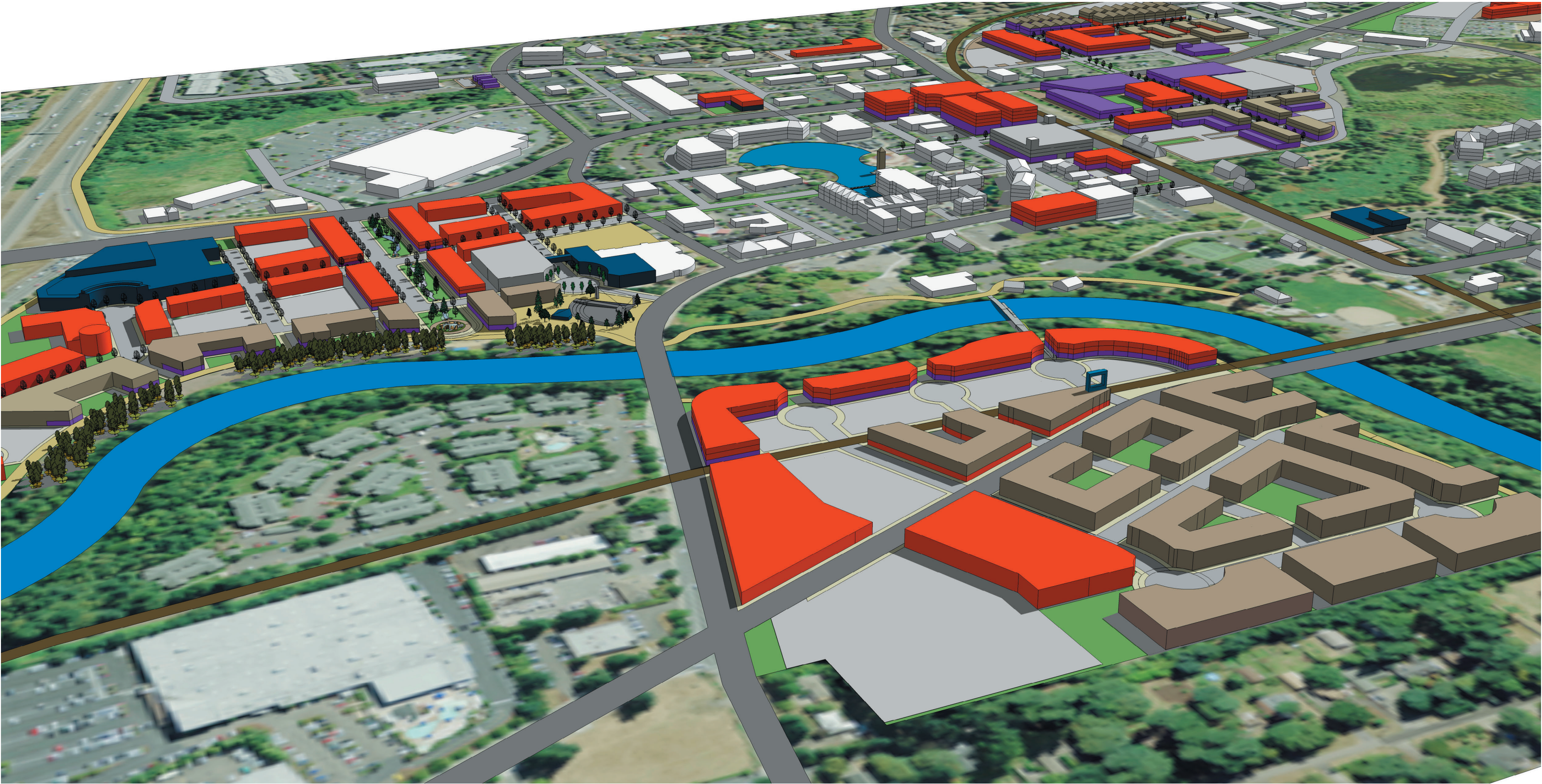
THE CITY OF TUALATIN: LOCAL ASPIRATIONS
GROWING AN URBAN TOWN CENTER



STASTNYBRUN ARCHITECTS
January 2010

Key

- | | |
|--|---|
| Retail | Structure/Surface Parking |
| Housing | Existing Buildings |
| Office | Plaza/Path |
| Civic/Entertainment | |



overview three: uses

THE CITY OF TUALATIN: LOCAL ASPIRATIONS
GROWING AN URBAN TOWN CENTER

STASTNYBRUN ARCHITECTS
January 2010

Key

- | | |
|---|--|
| Retail | Structure/Surface Parking |
| Housing | Existing Buildings |
| Office | Plaza/Path |
| Civic/Entertainment | |