

Tualatin

From the Beginning



*by Loyce Martinazzi
and Karen Lafky Nygaard*

Cover: Street scene in Tualatin, about 1910

Inside front cover: Donation Land Claim map of Tualatin area, 1861

Inside back cover: Aerial photo of Tualatin, 1993

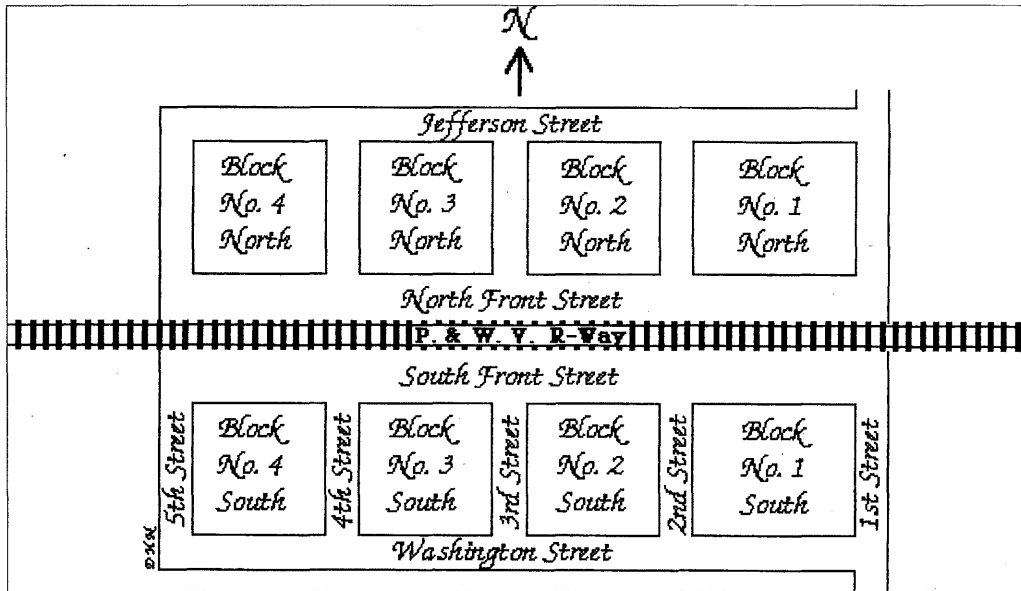
Copyright 1994 by Lóyce Martinazzi and Karen Lafky Nygaard
All rights reserved.

Library of Congress Catalog Card Number: 93-061095

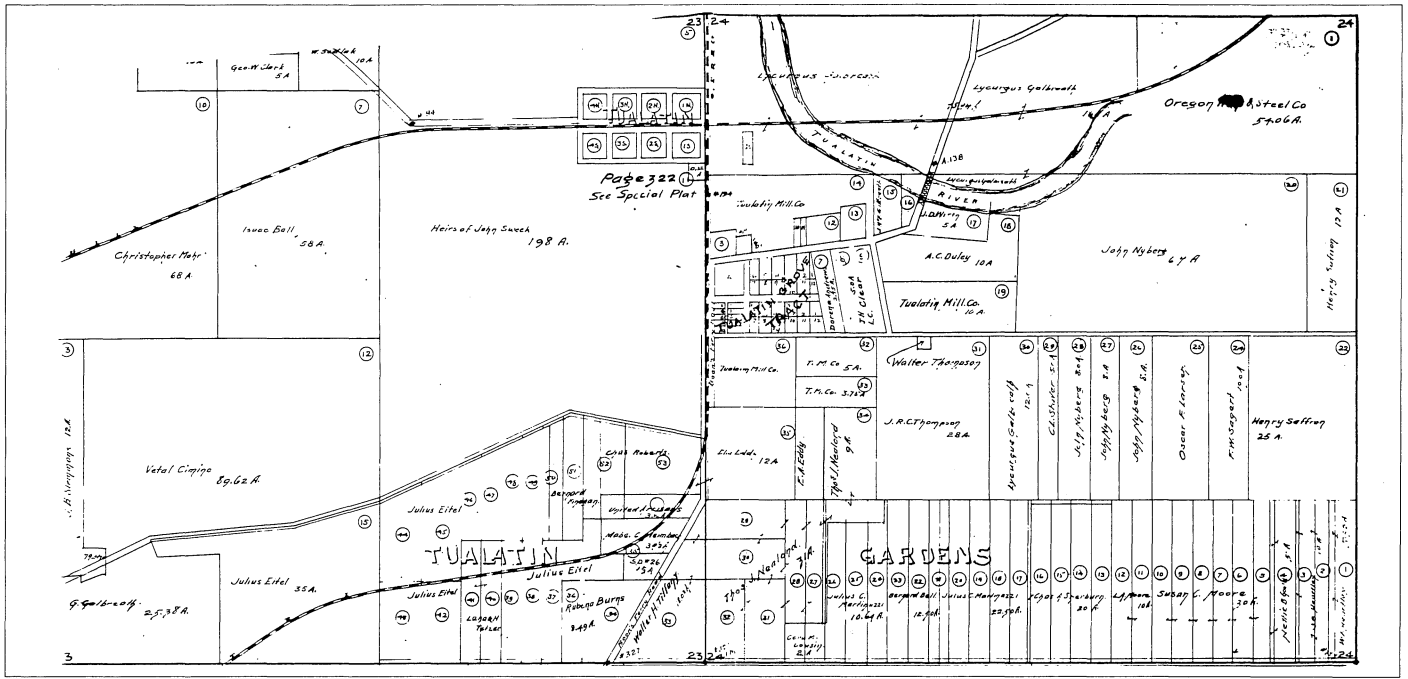
Published by the Tualatin Historical Society
P. O. Box 1055, Tualatin, OR 97062

Photos credited (OrHi--) are from the Oregon Historical Society.
Computer graphics by Dane Nygaard.

Printed by Davis and Fox Printing, Inc., Gresham, Oregon



The first plat of Tualatin. In 1887, after the Portland & Willamette Valley Railway Co. purchased right-of-way through John Sweek's land, he platted a town around the rail line and gave it the name of Tualatin. Streets paralleling the tracks were named Washington, South Front, North Front and Jefferson and crossing them were 1st through 5th Streets. Not all the streets platted were laid out and none of the original buildings remain. A century later, the area is now Old Town. (Copied from original document.)



Tualatin map of 1910, showing plats and property ownership of Sections 23 and 24, with Sagert St. on the south, the meridian (now 65th St) on the east, the river and SP tracks on the north, and present Teton Ave. on the west. Three developments already: Sweek's 1889 original town plat, Smith's 1908 Tualatin Grove in the town center, and the Backus 1892 development of thin slices, Tualatin Gardens, up the hill south.