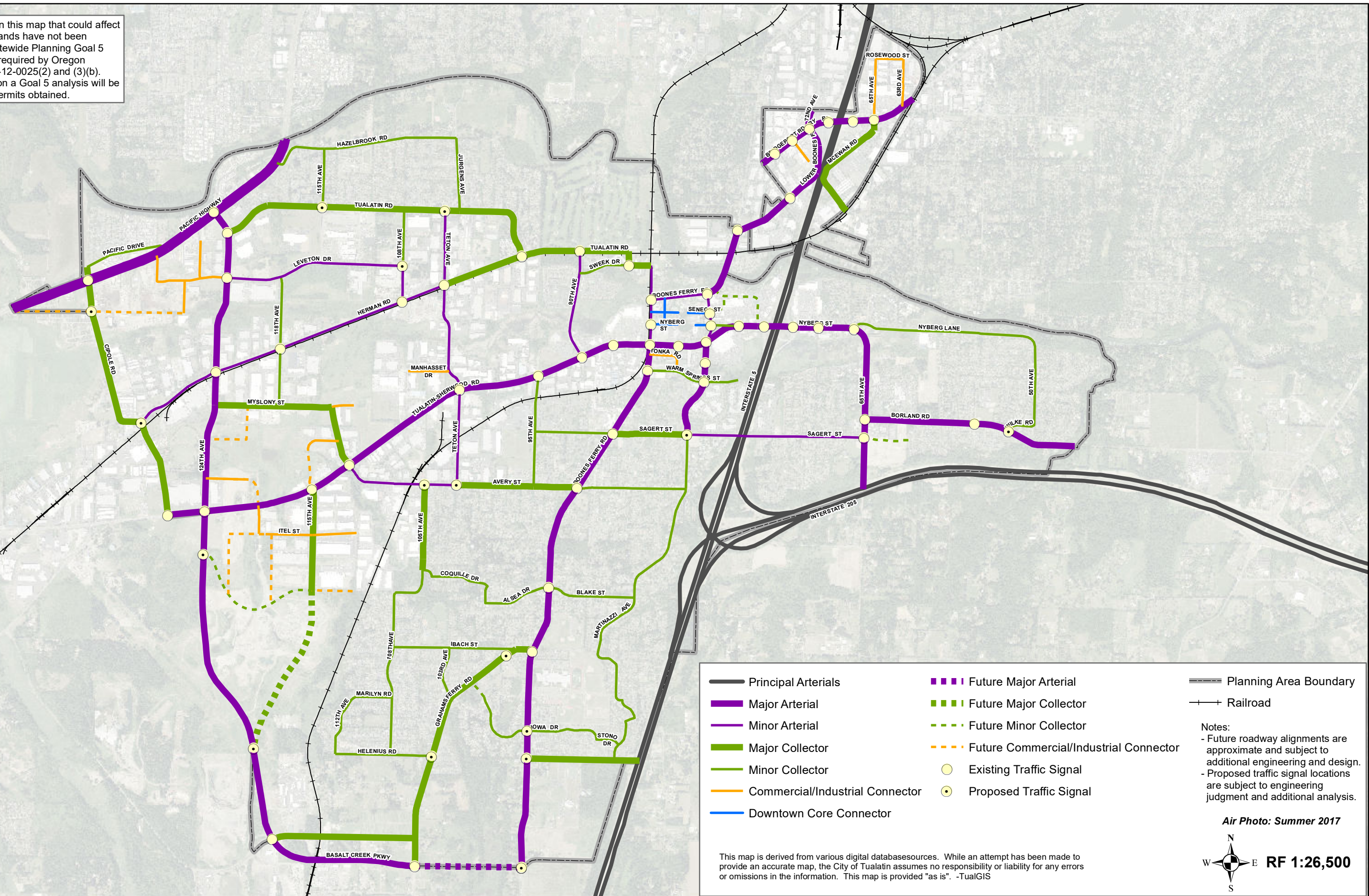


Figure 11-1: Functional Classification and Traffic Signal Plan

The projects embodied in this map that could affect rivers, streams and wetlands have not been analyzed in terms of Statewide Planning Goal 5 (Natural Resources) as required by Oregon Administrative Rule 660-12-0025(2) and (3)(b). Thus, prior to construction a Goal 5 analysis will be completed and proper permits obtained.



Note:
Future roadway alignments are
approximate and subject to
additional engineering and design.

This map is derived from various digital databasesources. While an attempt has been made to
provide an accurate map, the City of Tualatin assumes no responsibility or liability for any errors
or omissions in the information. This map is provided "as is". -TualGIS
Printed TBD



Figure 11-3: Local Street Plan

- Local Street Connection
- Planning Area Boundary

Air Photo: Summer 2017

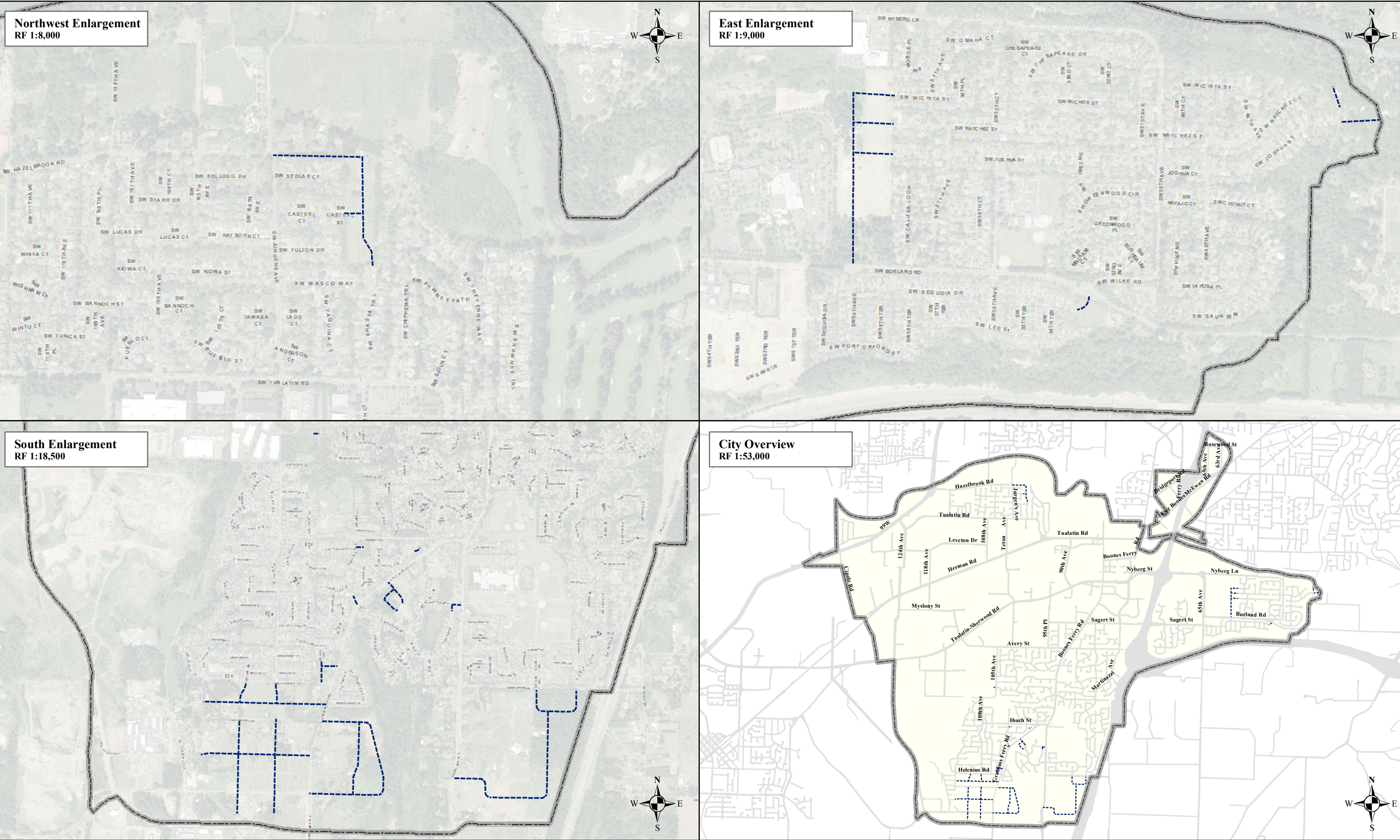
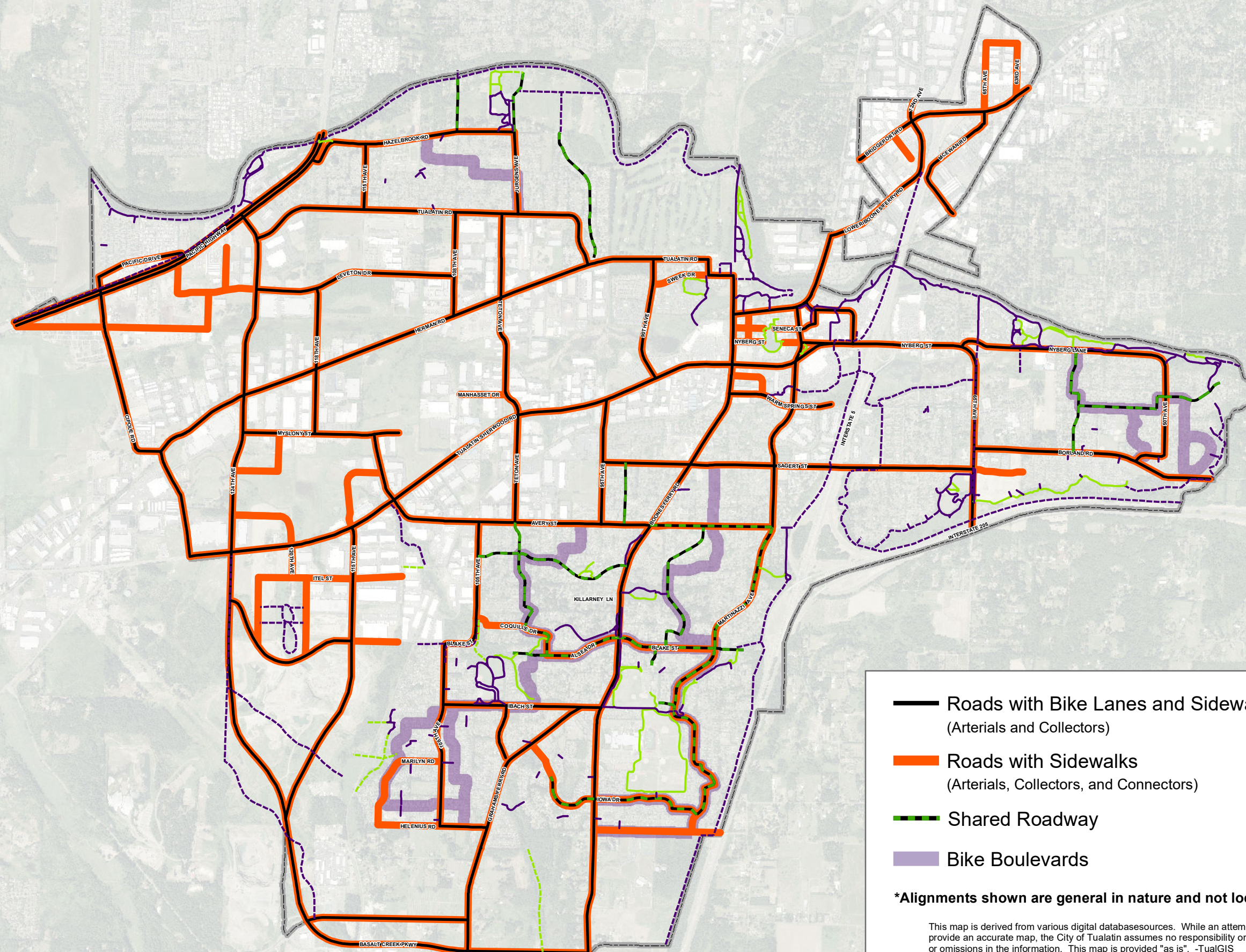











Figure 11-4: Bicycle and Pedestrian Plan



- | | |
|---|--|
|  Roads with Bike Lanes and Sidewalks
(Arterials and Collectors) |  Multi-Use Path |
|  Roads with Sidewalks
(Arterials, Collectors, and Connectors) |  Planned Multi-Use Path* |
|  Shared Roadway |  Pedestrian Path |
|  Bike Boulevards |  Planned Pedestrian Path* |
| |  Planning Area Boundary |

***Alignments shown are general in nature and not location specific.**

This map is derived from various digital databasesources. While an attempt has been made to provide an accurate map, the City of Tualatin assumes no responsibility or liability for any errors or omissions in the information. This map is provided "as is". -TualGIS
Printed: 2/27/2019



RF 1:26,000

Figure 11-5: Tualatin Transit Plan

The projects embodied in this map that could affect rivers, streams and wetlands have not been analyzed in terms of Statewide Planning Goal 5 (Natural Resources) as required by Oregon Administrative Rule 660-12-0025(2) and (3)(b). Thus, prior to construction a Goal 5 analysis will be completed and proper permits obtained.

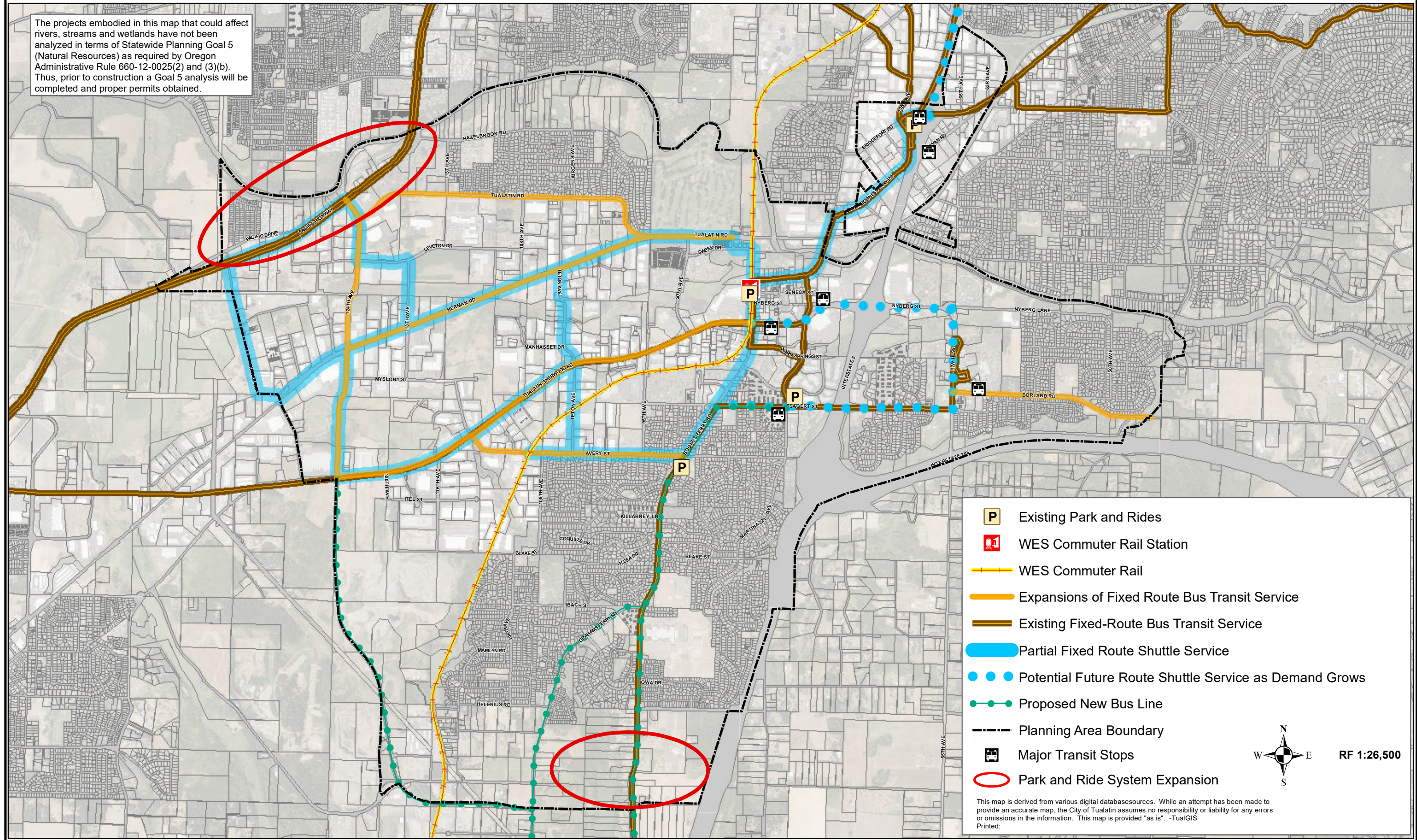
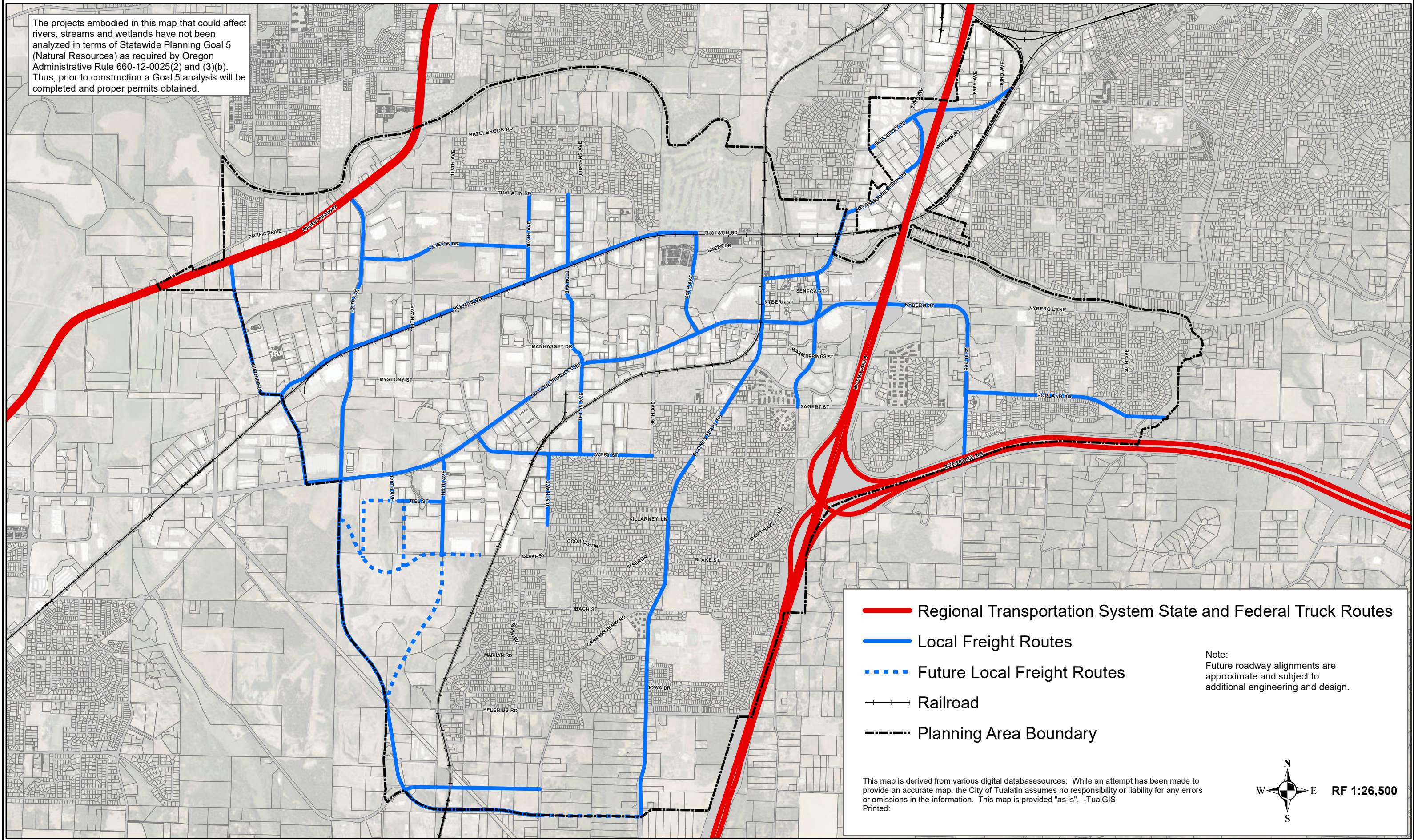
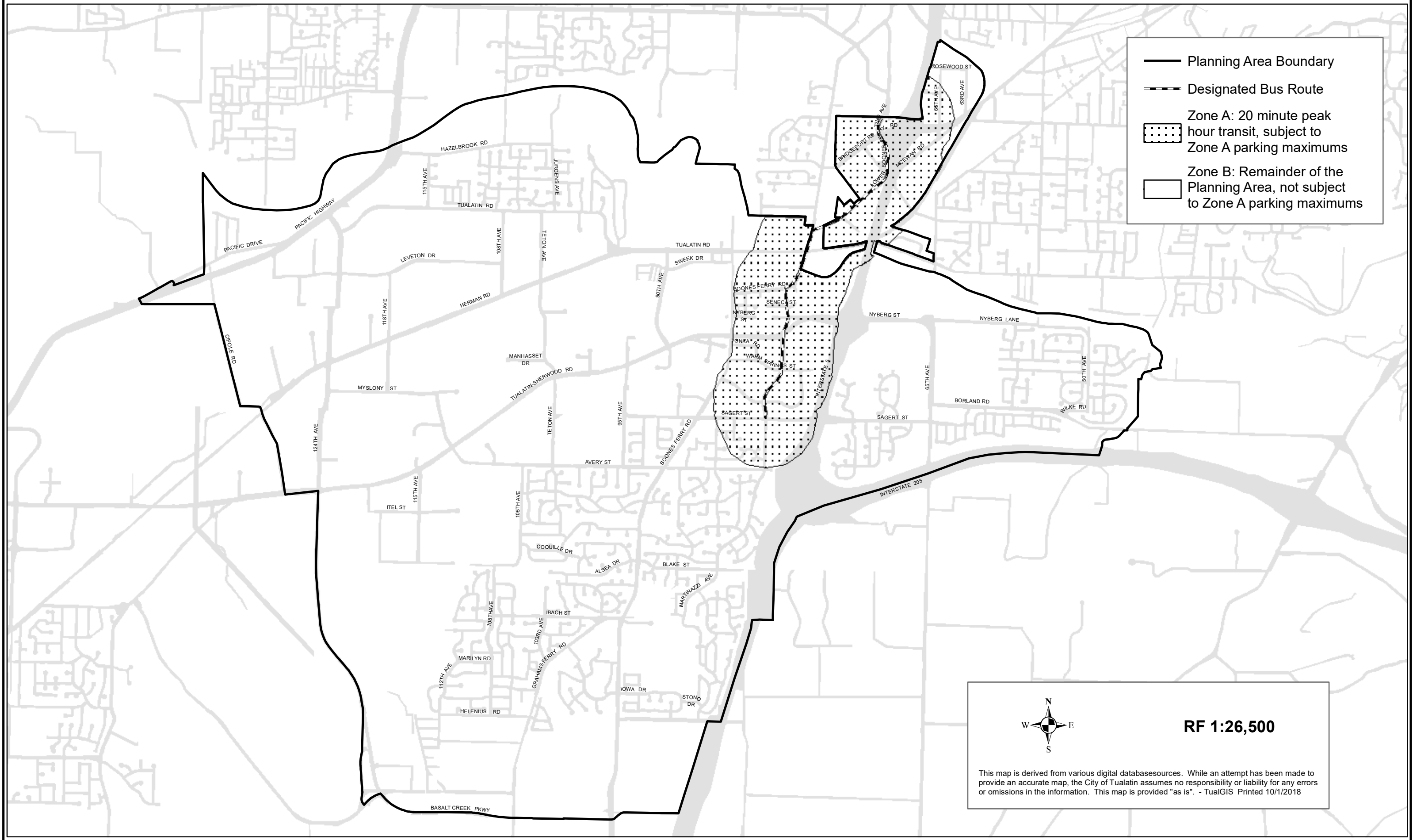


Figure 11-6: Freight Routes

The projects embodied in this map that could affect rivers, streams and wetlands have not been analyzed in terms of Statewide Planning Goal 5 (Natural Resources) as required by Oregon Administrative Rule 660-12-0025(2) and (3)(b). Thus, prior to construction a Goal 5 analysis will be completed and proper permits obtained.





RF 1:26,500

This map is derived from various digital databasesources. While an attempt has been made to provide an accurate map, the City of Tualatin assumes no responsibility or liability for any errors or omissions in the information. This map is provided "as is". - TualGIS Printed 10/1/2018