



# PARKS & RECREATION MASTER PLAN

## Project Advisory Committee Meeting # 2

Date: Tuesday, 9/12/17

Time: 6:30 - 8:30 pm

Location: Tualatin Public Library Community Room, 18878 SW Martinazzi Avenue

### *Agenda*

6:30-6:35 pm

Welcome and Introductions

6:35-6:40 pm

Public Comment

6:40-6:55 pm

Project Announcements and PAC Business

- Election of Chair and Vice Chair
- Approval of Meeting Minutes
- Public Outreach Opportunities

6:55-7:35 pm

Presentation: Existing Systems and Services Overview

- Parks, Recreation Facilities, Programs
- Q&A

7:35-7:45 pm

Community Needs Activity

7:45-8:20 pm

Discussion: Preliminary Needs Assessment Ideas

- Parkland
- Recreation facilities
- Trails
- Natural areas, wetlands, natural resources

8:20-8:30 pm

Close/Next Steps

### *Handouts*

Park and Facility Inventory  
Park System Map

## **City of Tualatin**

### **Parks & Recreation Master Plan Update**

#### **Project Advisory Committee Officers**

##### Committee Chair Nominations

Dear Tualatin Park Project Advisory Committee,

I like to express my interest in serving as the chair of the Tualatin Park Project Advisory Committee. As the vice-chair of Tualatin Parks Advisory Committee (TPark) for the last five years, updating the Master Plan has been the top of our priority list. My service on TPark has also given me an in-depth awareness of the specific Parks and Recreation needs in Tualatin. Having read the current Master Plan, I have a deep appreciation for the insightfulness that went into this document and our Committee's obligation to put our best efforts into planning for the future parks and recreation needs for our city.

In addition to TPark, I recently spent five years as a board member, treasurer and race director for the Oregon Road Runners Club. There, I learned the effectiveness of allowing a group of individuals to express their varying opinions to ultimately find the best outcome for a single purpose.

Your consideration to allow me to serve as the chair of our committee is greatly appreciated!

Sincerely,

Valerie Pratt

##### Committee Vice-Chair Nominations



# PARKS & RECREATION MASTER PLAN

## Project Advisory Committee Meeting #1 Summary

Date: Tuesday, 7/25/17

Time: 6:30 - 8:30 pm

Location: Tualatin Public Library

**Attendance:** Graehm Alberty, Diane Bonica, Kay Dix, Andrew Evans, Anthony Gallegos, Cyndy Hillier, Candice Kelly, Robert Knight, Dana Paulino, Valerie Pratt, Christen Sacco, Ted Saedi, Maureen Sevigny

**Councilor:** Jeff DeHaan, Paul Morrison

**Staff:** Paul Hennon, Rich Mueller, Sou Souvanny, Tom Steiger, Jerianne Thompson

**Consultant:** Cindy Mendoza, MIG

**Public:** Joe Lipscomb, Sharon Noell, Bev Phelps, George Wiggins

**Absent:** Tom Gile, Krista Nanton, Anthony Warren, Dennis Wells

---

### Welcome and Introductions

Rich Mueller welcomed and thanked the Committee and the public for attending the first meeting of the Project Advisory Committee Meeting. Rich then introduced Sherilyn Lombos, City of Tualatin City Manager. City Manager Lombos welcomed the group. She expressed her appreciation to committee members for taking time out of their schedules to volunteer on the committee for this important project. Sherilyn emphasized the importance for collaboration among all participants in the planning process in order to define a clear and reflective vision and purpose for the parks and recreation master plan.

Rich Mueller then introduced Cindy Mendoza, the project manager with the consultant group, MIG. Members of the Committee and staff went go around the room and provided a brief introduction on who they are and the organizations they are involved in or represent.

### Public Comment

There were four members of the public present. Each represented a range of interests, including the older adult demographic, program or facility users and observers.

### Project Overview & Planning Context

Cindy Mendoza presented a general overview of the planning process and the steps taken to reach a final plan. The primary purpose of each phase included, but is not limited to, understanding the current conditions of the parks and recreation facilities, programs and services, understanding the needs of the community and the opportunities to improve or enhance. The final master plan document will be an

accumulation of the facilities assessment and public input presented as goals and recommendations. A review of the funding sources available to support implementation will also be a part of the plan.

Cindy Mendoza distributed a document titled PAC Roles/Responsibilities and reviewed the role of the Project Advisory Committee and the meeting dates. The Community Engagement & Outreach Responsibilities document listing an extensive public involvement process was distributed and reviewed by Cindy Mendoza. Rich Mueller then asked committee members who wished to volunteer at a Pop Up Activity or Focus Group to sign up on a sheet sent around the room.

Cindy Mendoza presented a PowerPoint on the project planning context with an overview of Existing Systems and Services of Parks, Recreation Facilities and Programs. This presentation included a project overview, master plan process, planning process, project timeline, community outreach, city project groups, PAC role, planning context, location in region, demographics, population growth, population characteristics, population attributes, past planning efforts, comprehensive plan & code, 1983 parks master plan, protected areas, pedestrian/bike paths, trails planning, park site master plans, natural areas plan, greenway plans, maintenance/restoration plans, previous annual reports, community vision, city council 2030 vision, existing park/recreation system, and next steps.

The presentation and other documents can be found on the project page via the City of Tualatin's website.

### **Pop-Up Activity**

Following the presentation Cindy Mendoza explained the pop-up event and invited committee members and guests to participate in the activity. The results of which are below:

#### **How important are parks, recreation programs, events and trails to Tualatin's quality of life?**

Moderately important (2)  
Extremely important (13)

#### **What is the most important thing the City could do to improve Tualatin's parks, recreation programs, facilities and trails system?**

Provide more parks and sports fields (6)  
Protect or restore natural areas (2)  
Offer more or different recreation programs (5)  
Repair or replace worn or older park features (no responses recorded)  
Add a greater variety of recreation facilities in parks (8)  
Build more trails / connect the trail system (7)  
Build a multi-purpose recreation center (6)  
Remodel or refresh existing recreation buildings (1)  
Other: Open up river

#### **What activities would you like to see more of in Tualatin?**

Walking/biking (8)  
Fitness, wellness and exercise (10)  
Indoor recreation programming (5)  
Large community events (2)  
River activities (3)  
Playing in interactive, unique play areas (4)  
Social gatherings (3)

Wildlife viewing and interpreting nature (3)  
Making or admiring art (1)  
Adventure/challenge activities (no responses recorded)  
Sports (1)  
Library programs and activities (2)  
After school and summer camps (4)  
Other: Water play, splash pads

**How often do you visit or use the following areas in Tualatin?**

Frequently: Small parks in my neighborhood (3)  
Frequently: Large neighborhood parks (7)  
Frequently: Community Parks (14)  
Frequently: Tualatin Commons (8)  
Frequently: Trails and Natural Areas (8)  
Frequently: Tualatin Public Library (7)  
Frequently: Juanita Pohl Center, Community Center or Heritage Center (7)  
Sometimes: Small parks in my neighborhood (3)  
Sometimes: Large neighborhood parks (3)  
Sometimes: Community Parks (2)  
Sometimes: Tualatin Commons (7)  
Sometimes: Trails and Natural Areas (3)  
Sometimes: Tualatin Public Library (3)  
Sometimes: Juanita Pohl Center, Community Center or Heritage Center (3)  
Rarely: Small parks in my neighborhood (3)  
Rarely: Large neighborhood parks (1)  
Rarely: Community Parks (no responses recorded)  
Rarely: Tualatin Commons (no responses recorded)  
Rarely: Trails and Natural Areas (no responses recorded)  
Rarely: Tualatin Public Library (4)  
Rarely: Juanita Pohl Center, Van Raden Community Center or Heritage Center (2)  
Never: Small parks in my neighborhood (2)  
Never: Large neighborhood parks (2)  
Never: Community Parks (no responses recorded)  
Never: Tualatin Commons (no responses recorded)  
Never: Trails and Natural Areas (no responses recorded)  
Never: Tualatin Public Library (no responses recorded)  
Never: Juanita Pohl Center, Van Raden Community Center or Heritage Center (2)

**Discussion: Parks, Recreation, Events, Arts, Greenways, Natural Areas**

For the remainder of the time, Cindy Mendoza led the following discussion

**What is working well?**

- The community uses the parks and facilities
- Ties to cultural identity and uniqueness with interpretives and historic elements
- Parks and trails are green and attractive
- Parks and trails are well maintained
- Multiple opportunities to be active in parks involvement (plantings)
- Users feel safe
- There is a diversity of users
- Trails that promote walking and biking

- Park elements blend well with the surrounding area
- Clean, vibrant, open and big
- Fun activities
- Accessible and connected
- Parks are in proximity to the community
- City and parks department work well together
- City Council have historically been supportive of land acquisitions for parks and trails
- Accessibility of parks by bike
- Dog park
- The integration of man-made elements and water features
- Collaboration and coordination between volunteers and staff coordination for programs of all ages
- Collaboration and engagement with high school in natural significant environmental areas

### **What are the Opportunities?**

#### **Comprehensive Recreation Programming**

- Connect kids with outdoor education using the high school students and wetlands project as an example
- Improve recreation programs and activities for people of all ages
- Partner with the schools to improve accessibility
- Have dedicated places for specific age groups and activities (for example: pickle ball courts and splash pads)
- Incorporate outdoor exercise equipment to encourage health and fitness in community – Possible public-private partnership service groups and businesses to lessen the financial burden on community
- Land acquisitions that will connect areas that are currently not connected to an existing trail or park
- Provide access to the river for all areas of the City, in particular the areas where there is not currently an existing connection to a trail

#### **Multi-Purpose Indoor Recreation Facility**

- Build an indoor multi-purpose recreation field and explore various designs and funding opportunities

#### **Education and Information**

- Education / informational signs for park users – signs to outline park etiquette, safety and dangers for all ages.
- Leverage different relationships and develop a communication/outreach tools for a strategy to get information out about Tualatin's parks and programs
- Parks app for cell phone users

### **What needs more attention or improvements?**

#### **Accessibility & Connectivity**

- Pedestrian facilities like sidewalks and bike lanes into the southwestern area of the City are not completed

- No connection and a lack of facilities from the Pony Ridge area to the other areas of the City
- Trails are not consistently accessible by wheel chair during all seasons
- Better removal of hazards
- Better accessibility to school fields
- Connecting Tualatin to other communities to the south (Canby, Wilsonville) – Define community assets
- More direct river access points and outlooks with interpretives

### **Dedicated Recreation Spaces**

- More recreation spaces for sports to manage high competition for field rentals and maintenance schedules (turf fields, softball fields)
- Indoor recreation facilities with a multi-purpose designed

### **Communication**

- Communications / marketing strategy, specifically targeted to parks and recreation that is consistent across the departments

### **Development & Design Standards**

- Design standards for trails to consider bench standards, lighting, width of trails (high density versus low density), etc.
- Consider future accessibility standards (current standards versus what is actually being built)
- Standards for distance between park and residences
- Improve spacing of sidewalks for better access (improving in terms of access)

### **What challenges should this plan address?**

- Comprehensively explore partnerships with private businesses and organizations for funding support
- Land Acquisitions of additional lands
- Build in flexibility to address the long term nature of the plan
- Regional change and growth rate of the City - take advantage of the benefits of the surroundings
- Prioritization
- Traffic safety
- Vision needs to be in-line with funding sources
- Both indoor and outdoor programs and activities for all demographics and ages
- Ensure entire population has walking access or biking to parks
- Connectivity and accessibility in a better way
- Management plan to balance residential uses and outside users
- Opportunities to learn about nutrition and food systems (positive and negative of choices regarding food)
- Learn from other communities through site visits

### **Close/Next Steps**

Rich Mueller announced that the advisory committee will elect a Chair and Vice-chair the next meeting. Rich thanked members for attending and providing valuable input and ideas. The next PAC meeting will take place on September 12<sup>th</sup> at 6:30 pm at the Tualatin Public Library Community Room.





# PARKS AND RECREATION MASTER PLAN

## PROJECT ADVISORY COMMITTEE MEETING #2

Tuesday, September 12, 2017 | 6:30 to 8:30 pm





# PAC Meeting Agenda

- I. Welcome and Introductions
- II. Public Comment
- III. Project Announcements and PAC Business
- IV. Presentation: Existing Systems and Services Overview
- V. Activity: Community Needs
- VI. Discussion: Preliminary Needs Assessment
- VII. Close/ Next Steps



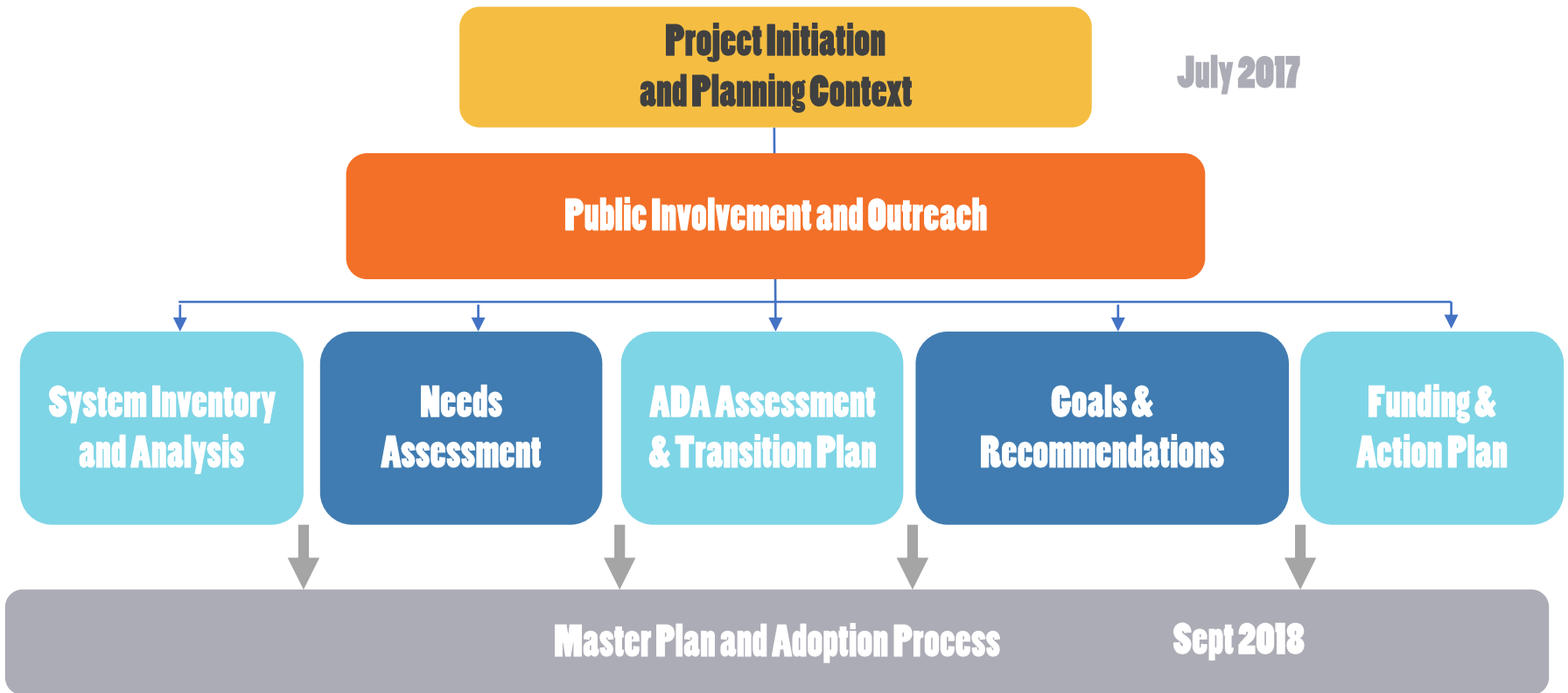
**TUALATIN**  
Accessible, Inclusive & Vibrant  
**Parks and Recreation**

**PROJECT ANNOUNCEMENTS  
AND PAC BUSINESS**

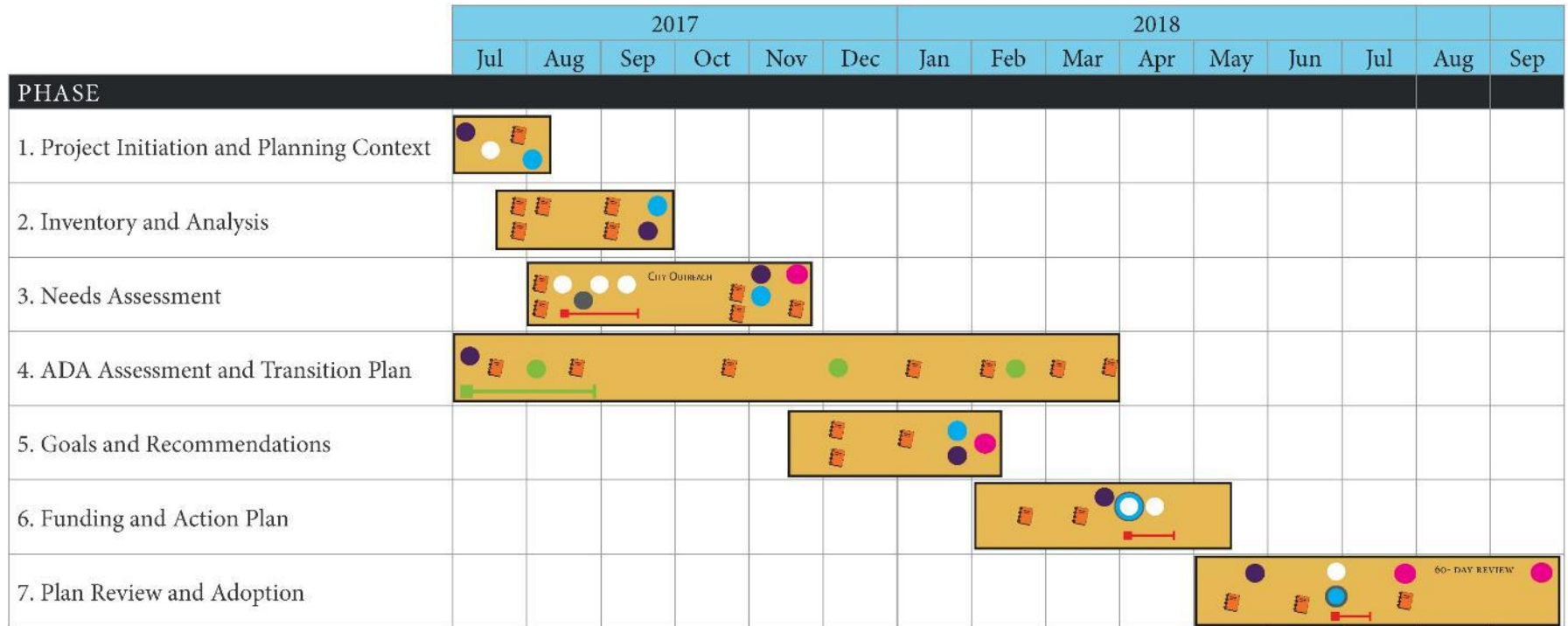
# Project Announcements and PAC Business

- Election of Chair and Vice Chair
- Approval of Meeting Minutes
- Public Outreach Opportunities

# Planning Process



# Project Timeline



- Project Advisory Committee (PAC) Meetings
- Project Management Team (PMT) Meetings
- Council Updates
- ADA Meetings
- Art Advisory Committee Meeting (TAAC)

- Public Engagement/ Meetings/Activities
- Online Questionnaire

Major Deliverable

ADA Surveying

# Community Outreach

- Stakeholder Interviews
- Online Questionnaire
- Focus Groups
- Hispanic/Latino Outreach and Meetings
- Pop Up Activities
- Park and Greenway Walks
- Community Workshop and Online Forum
- Draft Plan Review Forum





**TUALATIN**

Accessible, Inclusive & Vibrant  
**Parks and Recreation**

**PRESENTATION: EXISTING SYSTEMS  
AND SERVICES OVERVIEW**



# Systems & Services

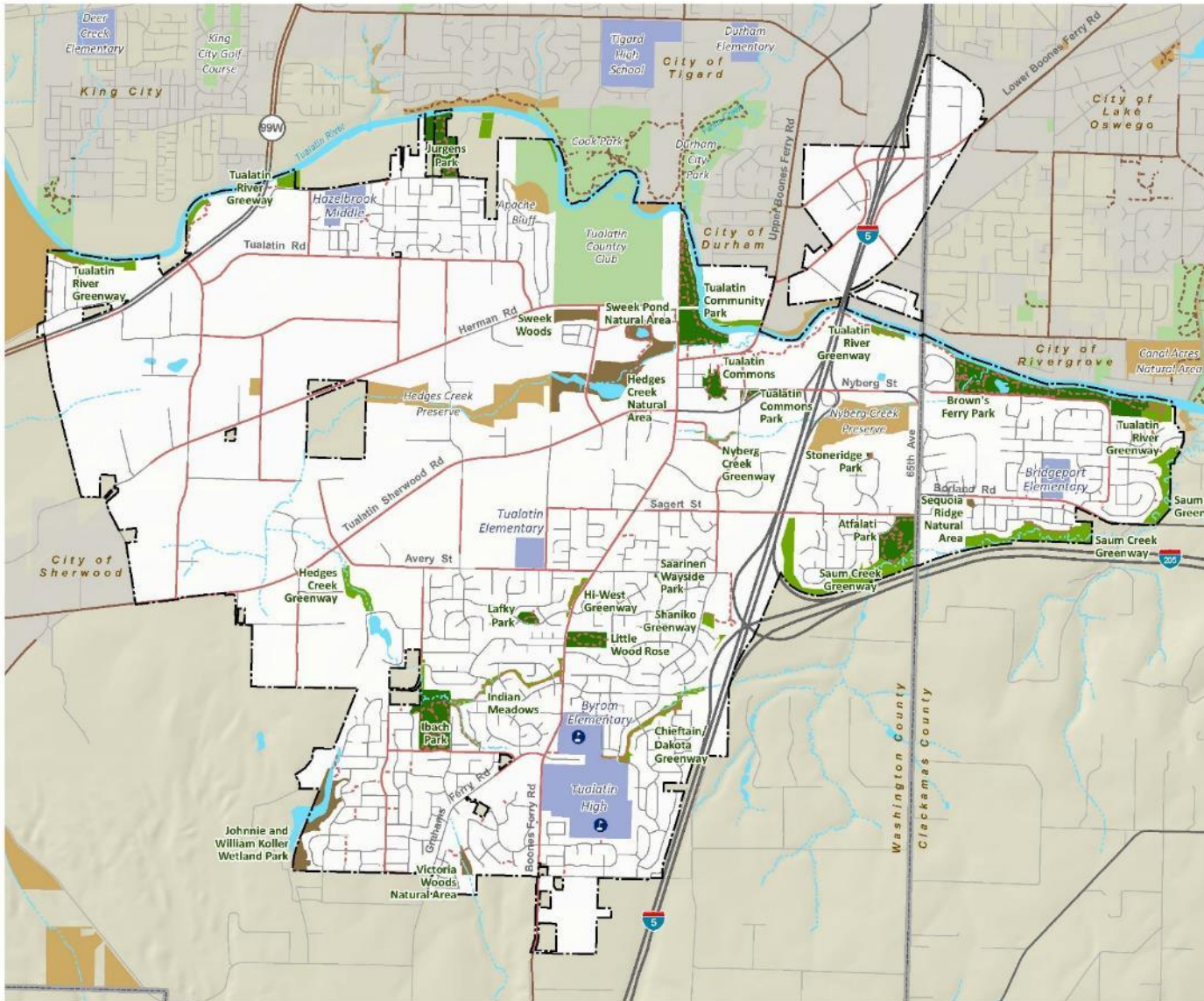
- Parks and Open Space (Land)
- Recreation Facilities
- Programs and Events
- Park Maintenance, Condition and Access

# Systems & Services

- Parks and Open Space (Land)
- Recreation Facilities
- Programs and Events
- Park Maintenance, Condition and Access



# Park Distribution

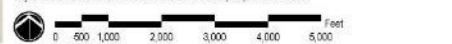


**Map 1:  
Existing Parks and Recreation  
Areas (Draft)**

- Tualatin Park and Recreation Facilities**
- Parks
  - Greenways
  - Natural Areas
  - School Joint-Use Facilities
- Other Park and Natural Areas**
- Other Developed Parks and Recreation Areas
  - Other Greenways and Natural Areas
  - Tigard-Tualatin District Schools
- Bike Routes and Trails**
- Tualatin Park Trails
  - Tualatin Bike Routes
  - Other Trails
  - Other Bike Routes
- Base Map Features**
- Tualatin City Boundary
  - Other City Boundaries
  - County Boundary
  - Freeways/Highways
  - Major Arterials
  - Local Streets
  - Streams
  - Rivers and Water Bodies

**M I G** Date: September 2017  
 Sources: City of Tualatin, Parks and Recreation, 2017; Metro Regional Government, 2017; Oregon Spatial Data Library, State of Oregon, 2017.

Disclaimer: This map is derived from various digital database sources. While an attempt has been made to provide an accurate map, the City of Tualatin, OR assumes no responsibility or liability for any errors or omissions in the information. This map is provided "as is".



# Park & Facility Inventory

Table: Tualatin Parks, Greenways and Natural Areas Inventory - Draft

Total Acres	Type	Outdoor Recreation					Athletic Facilities				Trails/ Natural Features				Amenities				Specialized			Notes					
		Play Features	Flexible Use Lawn Areas	Horseshoe/Pits	Skate Park	Water Play/Spray Feature	Rectangular Fields	Ball Fields	Rocketball Courts	Tennis Courts	Volleyball Court	Natural Areas & Wildlife Viewing	Trails	River Access	Interpretive Features	Barbeques	Dog Park	Covered Picnic Shelters	Restrooms	Picnic Tables	Art		Floating Dock/Boat Ramp (non-motorized)	Kayak & Canoe Rentals	Special Use Buildings		
<b>Parks</b>																											
Tualatin Community Park	27.11	CP	1	*	2	1	1w	2, 1 <sup>1</sup>	2, 1 <sup>1</sup>	2 <sup>5</sup>	2 <sup>2</sup>			*	*	*	*								Community Services Administration Offices, Juanita Pohl Center, Lafky House, Van Raden Community Center, Motorized boat launch, Pickleball overlay on tennis courts, Pedestrian bridge		
Brown's Ferry Park	43.21	CP												*	*	*	*								Community Center, Willowbrook Arts Camp: June-Aug		
Ibach Park	20.08	LNP	2	*			1w	2	1	1	2			*	*	*	*								Teen play equipment		
Atfalati Park	13.27	LNP	2	*				1	1	1	2			*	*	*	*										
Jurgens Park	15.59	LNP	2	*			1w	1	1	1	2			*	*	*	*								Raised garden beds		
Lafky Park	2.00	SNP	1	*						1				*	*	*	*										
Stoneridge Park	0.23	SNP	1	*										*	*	*	*										
Tualatin Commons	4.83	SU		*			1s							*	*	*	*								Crawfish fountain splash pad, Spray park		
Tualatin Commons Park	0.64	SU		*										*	*	*	*										
Saarinen Wayside Park	0.06	SU												*	*	*	*										
Little Wood Rose	6.55	NP												*	*	*	*										
<b>Total</b>	<b>133.6</b>		<b>9</b>	<b>8</b>	<b>2</b>	<b>1</b>	<b>4</b>	<b>7</b>	<b>6</b>	<b>6</b>	<b>8</b>	<b>0</b>	<b>7</b>	<b>5</b>	<b>3</b>	<b>7</b>	<b>3</b>	<b>1</b>	<b>7</b>	<b>6</b>	<b>8</b>	<b>6</b>	<b>3</b>	<b>1</b>	<b>6</b>	<i>Total includes 15 acres of greenways which are located within parks</i>	
<b>Greenways</b>																											
Chieftain/Dakota	6.14	G												*	*											3525 ft trail	
Hedges Creek	11.66	G												*	*	*	*									3795 ft trail	
Helenius	0.43	G																								250 ft trail	
Hi-West Estates	1.59	G												*	*											935 ft trail	
Indian Meadows	3.82	G												*	*											1660 ft trail	
Nyberg Creek	2.76	G												*	*											750 ft trail	
Nyberg Creek (South)	2.3	G												*	*											1000 ft trail	
Saum Creek	54.22	G												*	*											9435 ft trail	
Shaniko	3.3	G												*	*											2284 ft trail	
Tualatin River	29.56	G												*	*						*	BR				20721 ft trail, Boat ramp at 99W	
<b>Total</b>	<b>115.8</b>		<b>0</b>	<b>0</b>	<b>0</b>	<b>0</b>	<b>0</b>	<b>0</b>	<b>0</b>	<b>0</b>	<b>0</b>	<b>0</b>	<b>0</b>	<b>6</b>	<b>9</b>	<b>0</b>	<b>3</b>	<b>0</b>	<b>0</b>	<b>0</b>	<b>0</b>	<b>0</b>	<b>0</b>	<b>1</b>	<b>1</b>		
<b>Natural Areas</b>																											
Hedges Creek Natural Area	29.06	NA												*	*												
Hervin Grove Natural Area	0.29	NA												*	*												
Johnnie and William Kolier Wetland Park	15.32	NA												*	*												
Sweek Woods Natural Area	5.03	NA												*	*												
Sweek Ponds Natural Area	4.68	NA												*	*	*	*							1		Tualatin Heritage Center	
Sequoia Ridge Natural Area	0.65	NA												*	*												
Victoria Woods Natural Area	2.22	NA												*	*												
<b>Total</b>	<b>57.3</b>		<b>0</b>	<b>0</b>	<b>0</b>	<b>0</b>	<b>0</b>	<b>0</b>	<b>0</b>	<b>0</b>	<b>0</b>	<b>0</b>	<b>0</b>	<b>6</b>	<b>4</b>	<b>0</b>	<b>1</b>	<b>0</b>	<b>0</b>	<b>0</b>	<b>0</b>	<b>0</b>	<b>0</b>	<b>1</b>	<b>0</b>	<b>1</b>	
<b>School Joint-Use Facilities</b>																											
Tualatin High School Sports Field	0	JU						1																			Leonard Pohl Field
TuHS Byrom Elementary Cross County Trail	0	JU												*													
<b>Total</b>	<b>0</b>		<b>0</b>	<b>0</b>	<b>0</b>	<b>0</b>	<b>0</b>	<b>1</b>	<b>0</b>	<b>0</b>	<b>0</b>	<b>0</b>	<b>0</b>	<b>0</b>	<b>1</b>	<b>0</b>	<b>0</b>	<b>0</b>	<b>0</b>	<b>0</b>	<b>0</b>	<b>0</b>	<b>0</b>	<b>0</b>	<b>0</b>	<b>0</b>	
<b>Shared Use Paths</b>																											
TBD	0																										
TBD	0																										
<b>Total</b>	<b>0</b>		<b>0</b>	<b>0</b>	<b>0</b>	<b>0</b>	<b>0</b>	<b>0</b>	<b>0</b>	<b>0</b>	<b>0</b>	<b>0</b>	<b>0</b>	<b>0</b>	<b>0</b>	<b>0</b>	<b>0</b>	<b>0</b>	<b>0</b>	<b>0</b>	<b>0</b>	<b>0</b>	<b>0</b>	<b>0</b>	<b>0</b>	<b>0</b>	
<b>Grand Total</b>	<b>306.6</b>		<b>9</b>	<b>8</b>	<b>2</b>	<b>1</b>	<b>4</b>	<b>8</b>	<b>6</b>	<b>6</b>	<b>8</b>	<b>0</b>	<b>19</b>	<b>19</b>	<b>3</b>	<b>11</b>	<b>3</b>	<b>1</b>	<b>7</b>	<b>6</b>	<b>9</b>	<b>7</b>	<b>4</b>	<b>1</b>	<b>7</b>		

CP- Community Park, LNP- Large Neighborhood Park, SNP- Small Neighborhood Park, SU- Special Use, NP- Natural Park, JU- Joint Use, G- Greenway, NA-Natural Area  
 R- Reserveable, L- Lighted, W- Low volume water interpretive, S- Splash Pad or Spray Feature, BR- Boat Ramp, FD- Fishing dock

Revised 8/30/17 [Trail data are incomplete, but included where available]

# Park Acreage by Park Type

	Total Acres
<b>Parks</b>	
Tualatin Community Park	27.11
Brown's Ferry Park	43.21
Ibach Park	20.08
Atfalati Park	13.27
Jurgens Park	15.59
Lafky Park	2.00
Stoneridge Park	0.23
Tualatin Commons	4.83
Tualatin Commons Park	0.64
Saarinen Wayside Park	0.06
Little Wood Rose	6.55
<b>Total</b>	<b>133.6</b>
<b>Greenways</b>	
Chieftain/Dakota	6.14
Hedges Creek	11.66
Helenius	0.43
Hi-West Estates	1.59
Indian Meadows	3.82
Nyberg Creek	2.76
Nyberg Creek (South)	2.3
Saum Creek	54.22
Shaniko	3.3
Tualatin River	29.56
<b>Total</b>	<b>115.8</b>

<b>Natural Areas</b>	
Hedges Creek Natural Area	29.06
Hervin Grove Natural Area	0.29
Johnnie and William Koller Wetland Park	15.32
Sweek Woods Natural Area	5.03
Sweek Ponds Natural Area	4.68
Sequoia Ridge Natural Area	0.65
Victoria Woods Natural Area	2.22
<b>Total</b>	<b>57.3</b>
<b>School Joint-Use Facilities</b>	
Tualatin High School Sports Field	0
TuHS-Byrom Elementary Cross County Trail	0
<b>Total</b>	<b>0</b>
<b>Shared Use Paths</b>	
TBD	0
TBD	0
<b>Total</b>	<b>0</b>
<b>Grand Total</b>	<b>306.6</b>



# Land Classifications

- Parks
- Greenways
- Natural Areas
- School Joint-Use Facilities
- Shared Use Paths

# Parks

- Parks are City-owned open space designed to support recreation. The City has 11 parks, ranging from .06 to 43.2 acres in size. The sites collectively provide indoor and outdoor recreation facilities and a variety of amenities to support park use.



# Parks by Type

- Parks can be classified by the roles they play or functions they provide:
  - CP: Community Parks (2)
  - LNP: Large Neighborhood Park (3)
  - SNP: Small Neighborhood Park (2)
  - SU: Special Use (3)
  - NP: Natural Park (1)



# Park Function

Type of Park	Definition	Size	Park Sites
<b>Community Park</b>	Large parks that provide a variety of recreation opportunities for the entire community. Parks typically support large group gatherings, protect natural resources and include specialized facilities, such as community centers, docks and boat ramps.	27 to 44 acres	Tualatin Community Park, Brown's Ferry Park
<b>Large Neighborhood Park</b>	Mid-sized parks accessible to pedestrians, bicyclists and cars that support sports, recreation, picnicking and play opportunities for surrounding neighborhoods.	13 to 20 acres	Ibach Park, Atfalati Park, Jurgens Park
<b>Small Neighborhood Park</b>	Small parks located within biking and walking distance that provide gathering and play space for nearby neighbors.	0.2 to 2 acres	Lafky Park, Stoneridge Park
<b>Special Use Park</b>	Parks, recreation facilities, or sites designed around a singular purpose, such as plazas, historic properties, waysides, sports complexes, etc.	0.6 to 5 acres	Tualatin Commons, Tualatin Commons Park, Saarinen Wayside Park
<b>Nature Park</b>	Natural open space designed to provide access to nature.	6.5 acres	Little Wood Rose

# Greenways

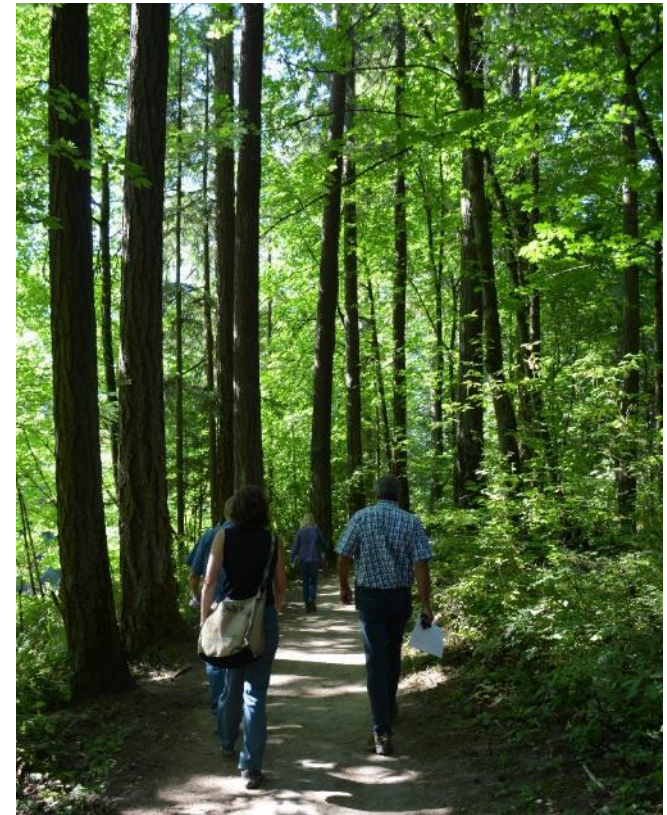
- Greenways are protected open space and trail corridors maintained for conservation, recreation, and non-motorized transportation. They range from the 750-foot (0.4 acre) Helenius Greenway to the almost 4-mile (3.4 acre) Tualatin River Greenway





# Natural Areas

- Natural Areas are mostly undeveloped areas managed to protect natural resources. These ranging from the 0.3-acre Herwin Grove Natural Area to the 29-acre Hedges Creek Natural Area





# School Joint Use Facilities

- Through a joint use agreement, the City ensures public access to select school facilities, including the TuHS Sports Field and the TuHS– Byrom Elementary Cross Country Trail.



# Shared Use Paths

- Designated easements allow public access to corridors that include (or are intended to include) shared use paths to support trail connectivity
- Examples include the Tualatin River Greenway Trail and Byrom Shared Use Paths.



# Park Land by the #'s

- 133.6 acres of parks
  - 70.32 acres Community Parks, 48.94 acres Large NPs, 2.23 acres Small NPs, 5.82 acres Special Use Parks, and 6.55 acres Nature Parks)
- 115.8 acres of Greenways with 8.4 miles of trail
- 57.3 acres of Natural Areas
- 2 School Joint-Use Facilities
- 2 constructed Shared Use Paths, 7 others planned, partially acquired and/or constructed

# Systems & Services

- Parks and Open Space (Land)
- **Recreation Facilities**
- Programs and Events
- Park Maintenance, Condition and Access

# Amenities & Facilities

Outdoor Recreation					Athletic Facilities				Trails/ Natural Features			Amenities				Specialized						
Play Features	Flexible Use Lawn Areas	Horseshoe Pits	Skate Park	Water Play/ Spray Feature	Rectangular Fields	Ball Fields	Basketball Courts	Tennis Courts	Volleyball Court	Natural Areas & Wildlife Viewing	Trails	River Access	Interpretive Features	Barbeques	Dog Park	Covered Picnic Shelters	Restrooms	Picnic Tables	Art	Floating Dock/ Boat Ramp (non-motorized)	Kayak & Canoe Rentals	Special Use Buildings

- Amenities: Elements that support park comfort, attractiveness and use (e.g., restrooms, bike racks)
- Facilities: Developed areas, elements or buildings designed to support a recreation activity (e.g., community center, sports field, trail)
- Features: Natural elements in parks (river, wildlife viewing areas)

# Recreation Facilities

Facility Type	# of Existing City Facilities
Athletic Facilities	
Baseball/Softball Field	6
Soccer/Rectangular Field	7
Basketball Courts	6
Tennis Court	8
Outdoor Recreation Facilities	
Play Features	9
Lawn areas	8 sites
Horseshoe Pit	2
Water Play/Spray Feature	4

Other	
Recreation Building	7
Water (Dock/Boat Ramp)	4
Natural Areas/ Greenways	19 sites
Trails	11
Interpretive Features	11 sites
Art	7 sites
Picnicking	9 sites
Covered Shelter	7
Other	Skatepark; dogpark



# Facility Rentals

- Brown's Ferry Community Center
- Juanita Pohl Center
- Tualatin Heritage Center
- Tualatin Library (Community Room, Conference Room, Study Room)
- Sports fields
- Picnic shelters



# Systems & Services

- Parks and Open Space (Land)
- Recreation Facilities
- **Programs and Events**
- Park Maintenance, Condition and Access

# Recreation Programs & Events

- **Enrichment classes or learning:**
- **Recreation:** a wide range of active and passive, formal and informal, activities and programs that incorporate physical activity, sport, arts, dance, fitness, cultural and heritage activities, events and festivals.
- **Recreation program:** An organized camp, class, activity, or sport typically provided for a duration of time.
- **Special event:** A planned public or social occasion; and organized special activity or large group gathering.
- **Drop-in activity:** A scheduled, facilitated recreation opportunity that is planned, but not directed by staff (e.g., open gym)
- **Self-directed activity:** recreation experience that is not scheduled or guided by staff (e.g., playing on a playground)

# Recreation Programs & Events

- Program service areas (types of programs)
- Core programs
- Target audiences and participants
- Program locations
- Program providers



# Recreation Programs Matrix

Table: Tualatin Program Review

Programs	Program Types	Provider		Location Where Offered										Participants		
		Program Provider	Community/ Special Use Parks	Neighborhood Parks	Greenways	Nature Park/ Natural Areas	Schools	Facilities and Other Locations	Populations Served	Notes						
<b>Preschool:</b> programs for kids under age 5	*Summer camps, sports camps, soccer programs, story time, musical performers, dance/movement, puppet shows	Recreation Recreation Tualatin Library Tiger/Tualatin School District Run Profit Partner Contact on Private Member	Tualatin Community Park (CP) Brow's Ferry Park (CF) Tualatin Commons (BU) Tualatin Commons Park (SU) Swanfield Wayside Park (BU) Booth Park (LUP)	Albion Park (LUP) Argons Park (LUP) Libby Park (PMP) Stonridge Park (SNP) Cherish/Quaketa (Q) Hedges Creek (CS) Helenius (Q) Hillcrest Estates (a) Indian Meadows (a) Kyanig Creek (C) Kyanig Creek (South) (a) Saur Creek (E) Shawlo (Q) Tualatin River (S) Little Wood House (W) Hedges Creek Natural Area (NA) Heron's Grove (NA) Jonnie and William Tidler Wetland Park (W) Sweet Woods (NA) Sweet Ponds Natural Area (NA) Sequoia - Silver Meadow Area (NA) Victoria Woods Natural Area (NA) Tualatin High School Sports Field (LUF) Tualatin Elementary Cross County Trail (JL)	Library Community Center/Senior Center Heritage Center Other facilities on Location	Preschool/Toddlers Youth and Teens Adults Seniors Specialized Recreation People from Diverse Cultures Families/Multi-generational	<p>*PBR runs the summer camps, library does story time and associated programming *Sports run by Skyhawk, Challenger and Kids Love Soccer</p> <p>*Other locations include field trips around the Metro region and the YMCA *YAC hosts seasonal activities for youth, library offers year-round</p> <p>*JRC hosts support group for Spanish-speaking women *Other locations include trail around the Metro region, country and world * Including library programs for adults (not just seniors) here</p> <p>*Dodgeball offered at high school, pickleball in conjunction with the Tualatin Pickleball Club *Remaining sports offered by Challenger, Skyhawk YMCA, Kids Love Soccer, etc. *Field trips offered by Riverkeepers *Hiking offered by Alder Creek (private company) *Teen Camps offer a variety of outdoor opportunity *Enviro camps and field trips for youth offered by Riverkeepers *Field trips for seniors offered through City *Parks Maintenance works with volunteers to provide environmental rehabilitation and education and partner with communities, non-profits that provide environmental education (if ends of trees, wetland conservancy, SOLVE, etc.).</p> <p>*Note that Art Walk crosses a lot of different sites *All low/noise art programming (non-seniors) *Library and Parks &amp; Rec provides most of the rest * Heritage Center offers some art classes with funding from Parks &amp; Rec</p> <p>*Provided almost exclusively through the Library and the Heritage Center</p> <p>*Almost exclusively at the Library</p>									
<b>Youth / Teen Development:</b> out-of-school programs and non-sports programs for children and youth age 5-18 (mostly older kids)	*Summer camps, Lego/robotics, coding, science program, video games, cooking and nutrition, babysitter training, Spring Break program, Youth Advisory Council, Teen Library Committee, volunteer programs, movies, book discussion, technology (makerspace) programs, crafts, tutoring/homework help, misc. performers, scavenger hunt, Student Visual Chronicle, Park After Dark, etc.															
<b>Older Adult/Senior Programs:</b> All programs and activities targeting adults and seniors (mostly seniors)	*Exercise, health, wellness, day trip, nutrition and cooking, support groups, legal advice, driver safety classes, workshops, live music, dancing, drop-in activities, movies, hiking, travel program, spelling bee, speed dating, arts/acting, Oktoberfest, etc. *Classes & educational programs, crafts, book discussion, topical programs															
<b>Sports:</b> primarily non-competitive opportunities for younger children and older adults	*Soccer, basketball, volleyball, baseball, flag football, cheerleading, pickleball, tennis, dodgeball															
<b>Outdoor Recreation:</b> non-sports recreation programs offered outdoors	*Canoe/kayak rentals, field trips, hiking *Teen outdoor rec: surfing, rock climbing, kayaking, whitewater rafting, etc.															
<b>Nature Interpretation &amp; Environmental Education:</b> opportunities to learn about the natural environment	*Environmental camps, field trips, ArtWalk: nature interpreters, animal programs (birds, reptiles, bugs) *Wetland Rehabilitation, Put Down Boats in Tualatin (tree painting) throughout the City, biological education activity with High School students, environmental engagement sessions															
<b>Special Events:</b> festivals and activities offered around the city	*YAC: Isolated House, Teen (telescope Run, BlenderDash) *Movies/Concerts/Summer Reading/Events on the Commons *Arbor Week, Story Nights/Holiday Lights, Pumpkin Regatta, Art Splash, Crawfish Festival, VinoWine, Paint Sale, Friends of Library book sales															
<b>The Arts:</b> activities or opportunities to experience displays of visual, fine and performing arts	*Summer camps, photo contests, special events, DIY & craft programs, ArtWalk, Quilt Barn Trail, music & drama performances at Library and Commons, Visual Chronicle (General, Historic and Student) collections displayed throughout the City															
<b>History and Culture:</b> events and activities that highlight the heritage of Tualatin and the Pacific Northwest	*Programs, lectures, arts, cultural activities, facility rentals, virtual tours, etc. *Art Walk (incorporates historical elements), library displays, Visual Chronicle Historic Collection *Quilt Barn Trail															
<b>Cultural Diversity:</b> events or activities that celebrate or promote other cultures	*Hispanic cultural activities, bilingual programs (yoga, story time, etc.), language & citizenship classes, Hispanic Heritage Month *American Indian-themed presentations *Summer Reading, meeting rooms, cooking the table, volunteer opportunities, technology services, general library services															
<b>Library:</b> all library programs and activities																

● Lots ● Some ○ Few - None



# Program Service Areas

- **Preschool:** programs for kids under age 5
- **Youth/ Teen Development:** out-of-school programs and non-sports programs for children and youth age 5-18 (mostly older kids)
- **Older Adult/ Senior Programs:** All programs and activities targeting adults and seniors (mostly seniors)
- **Sports:** primarily non-competitive opportunities for younger children and older adults



# Program Service Areas

- **Outdoor Recreation:** non-sports recreation programs offered outdoors
- **Nature Interpretation & Environmental Education:** opportunities to learn about the natural environment
- **Special Events:** festivals and activities offered around the city
- **The Arts:** activities or opportunities to experience displays of visual, fine and performing arts



# Program Service Areas

- **History and Culture:** events and activities that highlight the heritage of Tualatin and the Pacific Northwest
- **Cultural Diversity:** events or activities that celebrate or promote other cultures
- **Library:** all library programs and activities

# Core Programs



- Library programs
- Special events
- Youth and teen development
- Older adult/senior programs



# Target Audiences/Participants

- The City provides opportunities for all ages
- Youth and senior programs appear most prevalent
- There are some (but not a lot of) opportunities specifically for Hispanic/Latino residents
- People with special needs are integrated into existing programs
- There are many multi-generational events





# Primary Locations

- Library
- Juanita Pohl Center
- Community Park, Brown's Ferry and Tualatin Commons
- Sports wherever there are fields/gyms
- Some at Community Centers, Heritage Center
- Very little offered in neighborhood parks, greenways and natural areas

# Systems & Services

- Parks and Open Space (Land)
- Recreation Facilities
- Programs and Events
- Park Maintenance, Condition and Access

# Park Maintenance

- Parks Maintenance Division is responsible for:
  - The City's 306.6 acres of land in parks, greenways, natural areas.
  - The public spaces and landscaping around public buildings, core area parking lots, and in rights-of-way.
  - Vegetation management of 82 water quality facilities.
  - Street tree plantings and sidewalk maintenance program.
  - Reverse frontage landscape maintenance program

# Park & Facility Observations

- Park Tour: July 2014
  - What works well
  - What doesn't work well
  - What is outstanding and unique
  - What is noteworthy
  - Park character and maintenance



# Park & Facility Observations

- There is a strong emphasis on park character, sense of place and variety within the park system.
- There is strong interpretive theming throughout the system based on the region's natural and cultural history.
- Parks are innovative and interesting.





# Park & Facility Observations

- Parks are generally well-maintained and established.
- Maintenance needs will grow as facilities age and irrigation systems will need replacing.
- Some play areas could use updating.



# Park & Facility Observations

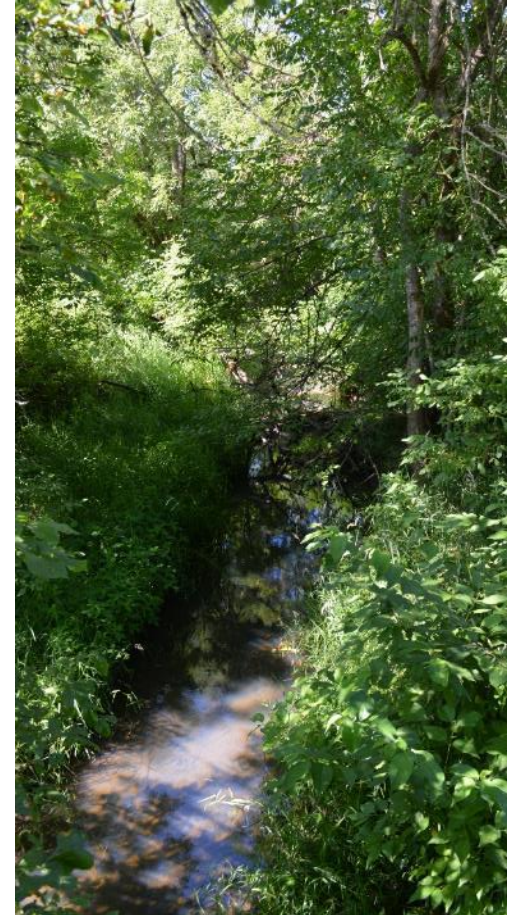
- Existing buildings, often designed for other purposes, limit programming and efficacy of that programming.





# Park & Facility Observations

- Tualatin has a wide variety of natural features in its park system – waterways, wetlands, etc.
- These are all in need of targeted and on-going restoration efforts to stabilize banks, address water quality issues, remove invasive plants, enhance native plantings.



# Park & Facility Observations

- Large portions of Tualatin's parks consist of turf – some are used for sports fields and others are open play areas. The sports fields that were created with a sand-base have shown a clear return on investment.

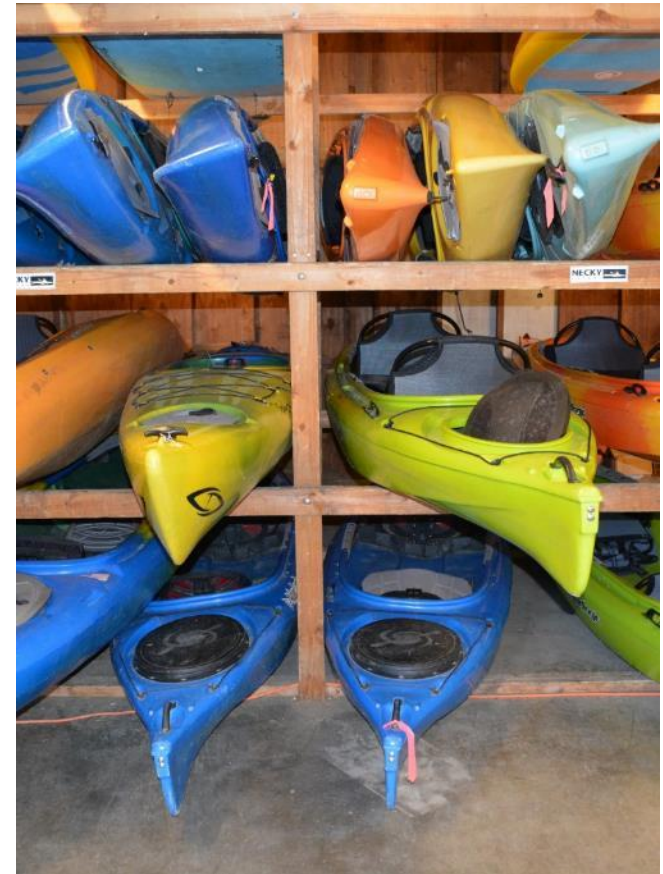






# Park & Facility Condition

- Criteria applied to assess good/fair/poor conditions
- City staff evaluated outdoor recreation facilities, athletic facilities, trails/natural features, amenities, specialized uses, and various additional considerations
- City staff also provided comments on planning, maintenance, and other notes for each facility



# Park & Facility Condition

- Ibach and Jurgens Parks are in the best overall condition
- Most parks are generally in good condition with some areas in fair condition
- Most playgrounds in the system need some level of repair or replacement
- Most parks have some areas with drainage concerns and/or old irrigation systems that will need updating to increase efficacy and efficiency

# Park & Facility Condition

- All natural areas (whether within a park, greenway or designated natural area) need some combination of:
  - Restoration
  - native vegetation enhancement
  - bank stabilization
  - removal of invasive species
  - arboriculture assessment and/or pruning
- Volunteers assist in this work
- Additional on-going management is needed

# Park & Facility Condition

- Tualatin Commons, while generally in fair condition, needs improvements to furnishings, plumbing, fountain, subsurface tiles, and water quality that will be more expensive and complicated to address
- Tualatin Community Park, given the intensity of its programming and use, has the largest number of components in fair condition with repairs or replacements needed

# Park & Facility Condition

- Many park buildings were residences and have been repurposed for offices and program space
- These buildings generally do not function well for the current use – restrooms are inadequate, room size and layout limit programs and impact staffing needs to provide required supervision, storage is insufficient, etc.
- The quaintness and sense of being at home is negated by the lack of functionality in the structure and their spatial layout



# Preliminary ADA Notes



- Tualatin's focus on accessibility is noticeable.
- The City's system generally provides better access than comparable communities.

# Preliminary ADA Notes

- Opportunities for improvement:
  - Wood fiber surfacing in play areas lacks stability when moved around by children – a better material is needed
  - Sand areas need better maintenance to maintain accessibility in adjacent non-sand areas
  - Synthetic safety/poured-in-place surfacing is old, worn out, and in need of replacement
  - Ballfields are inconsistent with accessibility
  - Tualatin Commons fountain surface is slippery







**TUALATIN**  
Accessible, Inclusive & Vibrant  
**Parks and Recreation**

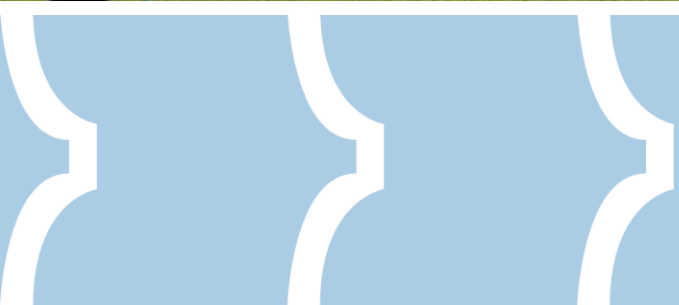


**COMMUNITY  
NEEDS ACTIVITY**





**TUALATIN**  
Accessible, Inclusive & Vibrant  
**Parks and Recreation**



# DISCUSSION: PRELIMINARY NEEDS ASSESSMENT IDEAS

# Discussion: Preliminary Needs Assessment Ideas

- Parkland
- Recreation facilities
- Trails
- Natural areas, wetlands, natural resources



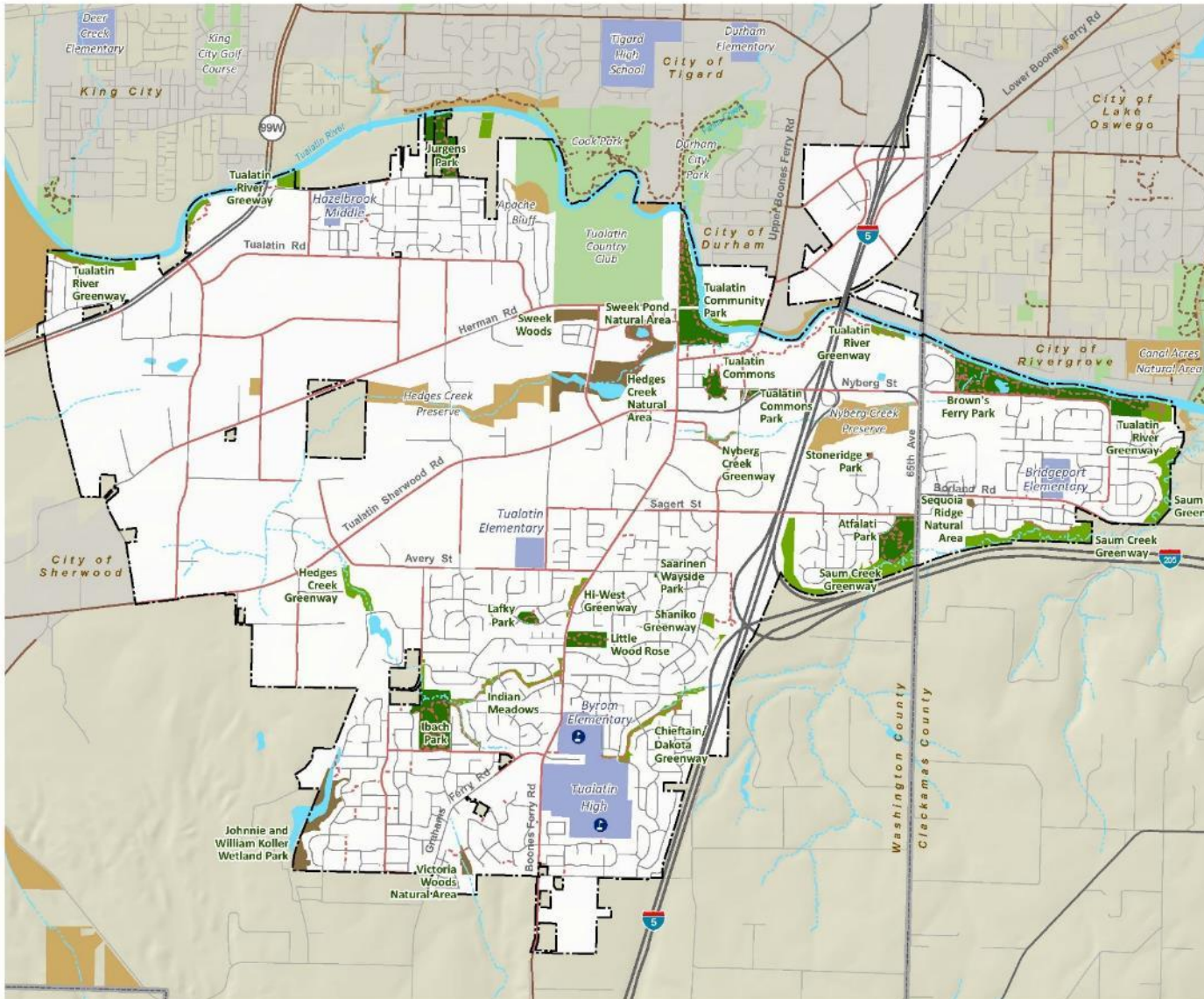
# Park System Map



## Parks & Recreation Master Plan

City of Tualatin

### Map 1: Existing Parks and Recreation Areas (Draft)



#### Tualatin Park and Recreation Facilities

- Parks
- Greenways
- Natural Areas
- School Joint-Use Facilities

#### Other Park and Natural Areas

- Other Developed Parks and Recreation Areas
- Other Greenways and Natural Areas
- Tigard-Tualatin District Schools

#### Bike Routes and Trails

- Tualatin Park Trails
- Tualatin Bike Routes
- Other Trails
- Other Bike Routes

#### Base Map Features

- Tualatin City Boundary
- Other City Boundaries
- County Boundary
- Freeways/Highways
- Major Arterials
- Local Streets
- Streams
- Rivers and Water Bodies

**M G** Date: September 2017

Sources: City of Tualatin, Parks and Recreation, 2017; Metro Regional Government, 2017; Oregon Spatial Data Library, State of Oregon, 2017.

Disclaimer: This map is derived from various digital database sources. While an attempt has been made to provide an accurate map, the City of Tualatin, OR assumes no responsibility or liability for any errors or omissions in the information. This map is provided "as is".







**TUALATIN**  
Accessible, Inclusive & Vibrant  
**Parks and Recreation**

**CLOSE/NEXT STEPS**

# Next Steps

- Community outreach and engagement
- Outreach findings summary
- Park and facility distribution analysis
- Preliminary needs
- Next Meeting: October 24



# PARKS AND RECREATION MASTER PLAN

## PROJECT ADVISORY COMMITTEE MEETING #2

Tuesday, September 12<sup>th</sup> 2017 | 6:30 to 8:30 pm



**Table: Tualatin Parks, Greenways and Natural Areas Inventory - Draft**

Parks	Total Acres	Type	Outdoor Recreation						Athletic Facilities				Trails/ Natural Features				Amenities					Specialized			Notes		
			Play Features	Flexible Use Lawn Areas	Horseshoe Pits	Skate Park	Water Play/ Spray Feature	Rectangular Fields	Ball Fields	Basketball Courts	Tennis Courts	Volleyball Court	Natural Areas & Wildlife Viewing	Trails	River Access	Interpretive Features	Barbeques	Dog Park	Covered Picnic Shelters	Restrooms	Picnic Tables	Art	Floating Dock/ Boat Ramp (non-motorized)	Kayak & Canoe Rentals		Special Use Buildings	
<b>Parks</b>																											
Tualatin Community Park	27.11	CP	1	•	2	1	1w	2, 1 <sup>L</sup>	2, 1 <sup>L</sup>	2 <sup>L</sup>	2 <sup>L</sup>		•	•	•	•	3	1	4 <sup>R</sup>	1	•	•	BR	•	4	Community Services Administration Offices, Juanita Pohl Center, Lafky House, Van Raden Community Center, Motorized boat launch, Pickleball overlay on tennis courts, Pedestrian bridge	
Brown's Ferry Park	43.21	CP											•	•	•	•				1	•	•	FO	•	2	Community Center. Willowbrook Arts Camp: June-Aug	
Ibach Park	20.08	LNP	2	•			1w	2	1	1	2		•						2	1	•	•				Teen play equipment	
Atfalati Park	13.27	LNP	2	•				1	1	1	2		•							1	•						
Jurgens Park	15.59	LNP	2	•			1w	1	1	1	2		•	•	•	•			1	1	•	•	FD			Raised garden beds	
Lafky Park	2.00	SNP	1	•							1			•													
Stoneridge Park	0.23	SNP	1	•																							
Tualatin Commons	4.83	SU		•			1s												1	•	•					Crawfish fountain splash pad, Spray park	
Tualatin Commons Park	0.64	SU		•																							
Saarinen Wayside Park	0.06	SU											•														
Little Wood Rose	6.55	NP											•	•													
<b>Total</b>	<b>133.6</b>		<b>9</b>	<b>8</b>	<b>2</b>	<b>1</b>	<b>4</b>	<b>7</b>	<b>6</b>	<b>6</b>	<b>8</b>	<b>0</b>	<b>7</b>	<b>5</b>	<b>3</b>	<b>7</b>	<b>3</b>	<b>1</b>	<b>7</b>	<b>6</b>	<b>8</b>	<b>6</b>	<b>3</b>	<b>1</b>	<b>6</b>	<i>Total includes 15 acres of greenways which are located within parks</i>	
<b>Greenways</b>																											
Chieftain/Dakota	6.14	G											•	•												3525 ft trail	
Hedges Creek	11.66	G											•	•												3795 ft trail	
Helenius	0.43	G												•												250 ft trail	
Hi-West Estates	1.59	G												•												935 ft trail	
Indian Meadows	3.82	G												•												1660 ft trail	
Nyberg Creek	2.76	G											•	•												750 ft trail	
Nyberg Creek (South)	2.3	G											•	•												1000 ft trail	
Saum Creek	54.22	G												•												9435 ft trail	
Shaniko	3.3	G											•	•												2284 ft trail	
Tualatin River	29.56	G											•	•								•	BR			20721 ft trail, Boat ramp at 99W	
<b>Total</b>	<b>115.8</b>		<b>0</b>	<b>0</b>	<b>0</b>	<b>0</b>	<b>0</b>	<b>0</b>	<b>0</b>	<b>0</b>	<b>0</b>	<b>0</b>	<b>6</b>	<b>9</b>	<b>0</b>	<b>3</b>	<b>0</b>	<b>0</b>	<b>0</b>	<b>0</b>	<b>0</b>	<b>0</b>	<b>1</b>	<b>1</b>			
<b>Natural Areas</b>																											
Hedges Creek Natural Area	29.06	NA											•	•													
Hervin Grove Natural Area	0.29	NA											•														
Johnnie and William Koller Wetland Park	15.32	NA											•														
Sweek Woods Natural Area	5.03	NA											•														
Sweek Ponds Natural Area	4.68	NA											•	•						•				1		Tualatin Heritage Center	
Sequoia Ridge Natural Area	0.65	NA											•	•													
Victoria Woods Natural Area	2.22	NA											•	•													
<b>Total</b>	<b>57.3</b>		<b>0</b>	<b>0</b>	<b>0</b>	<b>0</b>	<b>0</b>	<b>0</b>	<b>0</b>	<b>0</b>	<b>0</b>	<b>0</b>	<b>6</b>	<b>4</b>	<b>0</b>	<b>1</b>	<b>0</b>	<b>0</b>	<b>0</b>	<b>0</b>	<b>0</b>	<b>0</b>	<b>1</b>	<b>0</b>	<b>0</b>	<b>1</b>	
<b>School Joint-Use Facilities</b>																											
Tualatin High School Sports Field	0	JU						1																			Leonard Pohl Field
TuHS-Byrom Elementary Cross County Trail	0	JU											•														
<b>Total</b>	<b>0</b>		<b>0</b>	<b>0</b>	<b>0</b>	<b>0</b>	<b>0</b>	<b>1</b>	<b>0</b>	<b>0</b>	<b>0</b>	<b>0</b>	<b>0</b>	<b>1</b>	<b>0</b>	<b>0</b>	<b>0</b>	<b>0</b>	<b>0</b>	<b>0</b>	<b>0</b>	<b>0</b>	<b>0</b>	<b>0</b>	<b>0</b>		
<b>Shared Use Paths</b>																											
TBD	0																										
TBD	0																										
<b>Total</b>	<b>0</b>		<b>0</b>	<b>0</b>	<b>0</b>	<b>0</b>	<b>0</b>	<b>0</b>	<b>0</b>	<b>0</b>	<b>0</b>	<b>0</b>	<b>0</b>	<b>0</b>	<b>0</b>	<b>0</b>	<b>0</b>	<b>0</b>	<b>0</b>	<b>0</b>	<b>0</b>	<b>0</b>	<b>0</b>	<b>0</b>	<b>0</b>	<b>0</b>	
<b>Grand Total</b>	<b>306.6</b>		<b>9</b>	<b>8</b>	<b>2</b>	<b>1</b>	<b>4</b>	<b>8</b>	<b>6</b>	<b>6</b>	<b>8</b>	<b>0</b>	<b>19</b>	<b>19</b>	<b>3</b>	<b>11</b>	<b>3</b>	<b>1</b>	<b>7</b>	<b>6</b>	<b>9</b>	<b>7</b>	<b>4</b>	<b>1</b>	<b>7</b>		
CP- Community Park, LNP- Large Neighborhood Park, SNP- Small Neighborhood Park, SU- Special Use, NP- Natural Park, JU- Joint Use, G- Greenway, NA-Natural Area R- Reserveable, L- Lighted, W- Low volume water interpretive, S- Splash Pad or Spray Feature, BR- Boat Ramp, FD- Fishing dock																											
Revised 8/30/17 [Trail data are incomplete, but included where available]																											

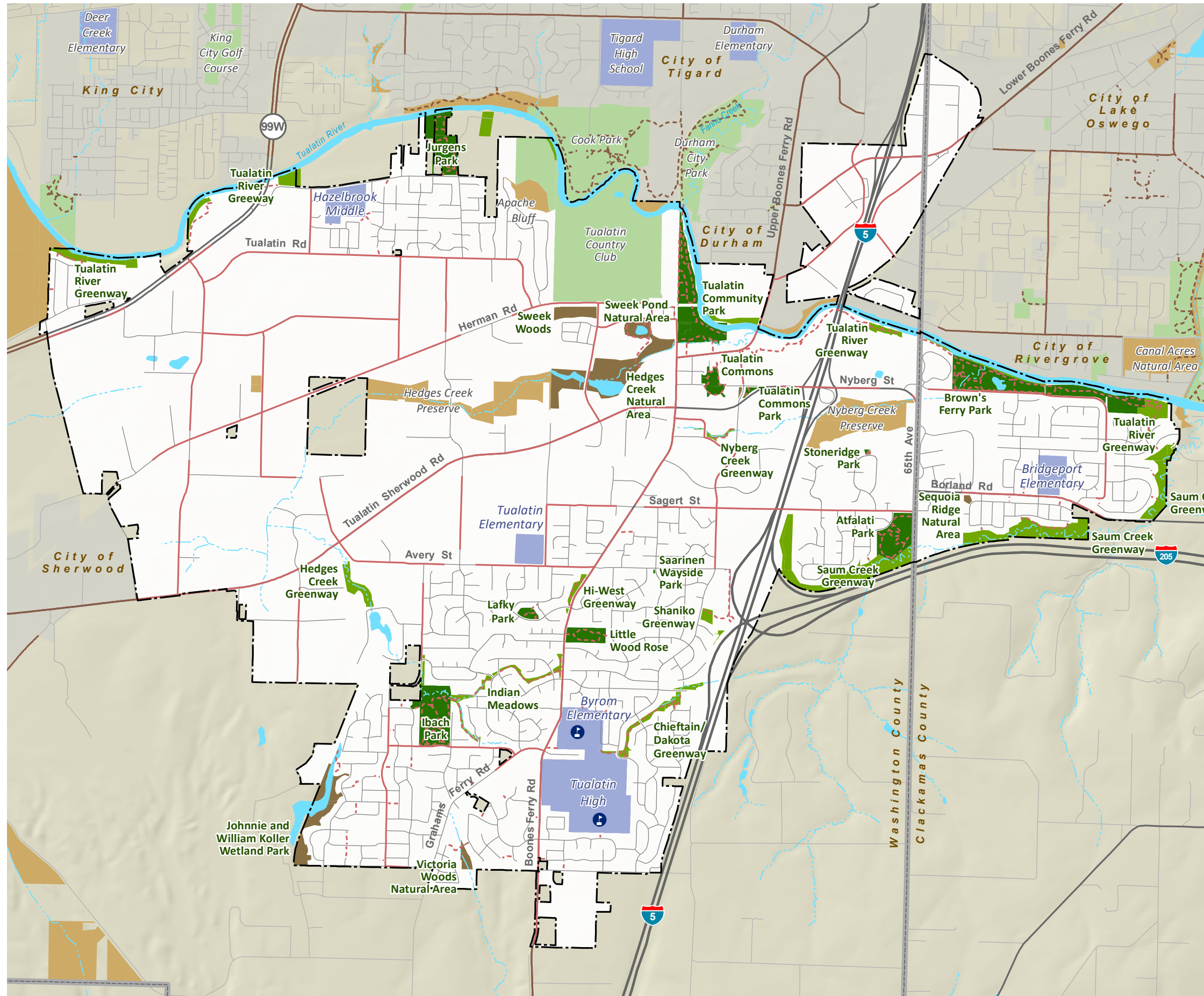




# Parks & Recreation Master Plan

City of Tualatin

## Map 1: Existing Parks and Recreation Areas (Draft)



### Tualatin Park and Recreation Facilities

- Parks
- Greenways
- Natural Areas
- School Joint-Use Facilities

### Other Park and Natural Areas

- Other Developed Parks and Recreation Areas
- Other Greenways and Natural Areas
- Tigard-Tualatin District Schools

### Bike Routes and Trails

- Tualatin Park Trails
- Tualatin Bike Routes
- Other Trails
- Other Bike Routes

### Base Map Features

- Tualatin City Boundary
- Other City Boundaries
- County Boundary
- Freeways/Highways
- Major Arterials
- Local Streets
- Streams
- Rivers and Water Bodies

Date: September 2017

Sources: City of Tualatin, Parks and Recreation, 2017; Metro Regional Government, 2017; Oregon Spatial Data Library, State of Oregon, 2017.

Disclaimer: This map is derived from various digital database sources. While an attempt has been made to provide an accurate map, the City of Tualatin, OR assumes no responsibility or liability for any errors or omissions in the information. This map is provided "as is".

