



MEMORANDUM

CITY OF TUALATIN

TO: Honorable Mayor and Members of the City Council

THROUGH: Sherilyn Lombos, City Manager

FROM: Richard Mueller, Parks and Recreation Manager
Paul Hennon, Community Services Director

DATE: 01/22/2018

SUBJECT: Parks and Recreation Master Plan Update

ISSUE BEFORE THE COUNCIL:

The Council will receive a status report on the Parks and Recreation Master Plan Update Project with a focus on the Community Outreach themes.

EXECUTIVE SUMMARY:

Parks and Recreation Master Plan Update Project was initiated in July of 2017 and has now progressed through several phases. This status report will inform Council of the project schedule and focus on seven major themes that emerged from the Community Outreach Phase.

Project Phases Completed To-Date and/or In-Process

- System Inventory and Analysis
- Public Involvement and Outreach
- Needs Assessment
- ADA Assessment and Transition Plan

The attached PowerPoint presentation provides an overview of the phases of work completed or in-process. For summaries and detailed reports on each phase of the project, see the project website at:

<https://www.tualatinoregon.gov/recreation/webforms/parks-recreation-master-plan-update>.

Community Outreach Themes

The most prominent community outreach themes that emerged from public involvement and outreach activities include:

- Parks and recreation are important to Tualatin's quality of life.
- Trail connections and trail activities are a priority for community members.
- There is a need for improved facilities and expanded capacity for sports.
- A multi-use indoor facility is desired to support a variety of community interests and needs.
- Community members desire stronger, inclusive communications and marketing from the

City and Community Services Department.

- A greater variety of activities and programs is needed to meet the needs and interests of people of all ages and cultures.
- Community members highly value Tualatin's natural resources and want access to natural features, especially the river, for recreation.

Next Steps

The immediate next steps consist of preparing Preliminary Recommendations and reviewing them with the Project Advisory Committee and the City Council during the winter and spring.

Development of Preliminary Recommendations will require MIG, staff, the Policy Advisory Committee, and ultimately the Council to address competing priorities for trails, parks, natural areas, major indoor and outdoor facilities, and the future focus of recreation programming that the city can reasonably strive to achieve by the 2035 timeframe for this master plan.

Work will continue on the ADA Assessment and Transition Plan through the winter and spring. This summer and fall, funding and preparation of an action plan will be completed, and final plan review and adoption will be completed in the late summer and fall.

Attachments: PowerPoint Presentation



PARKS AND RECREATION MASTER PLAN

CITY COUNCIL WORK SESSION

Monday, January 22, 2018



Meeting Agenda

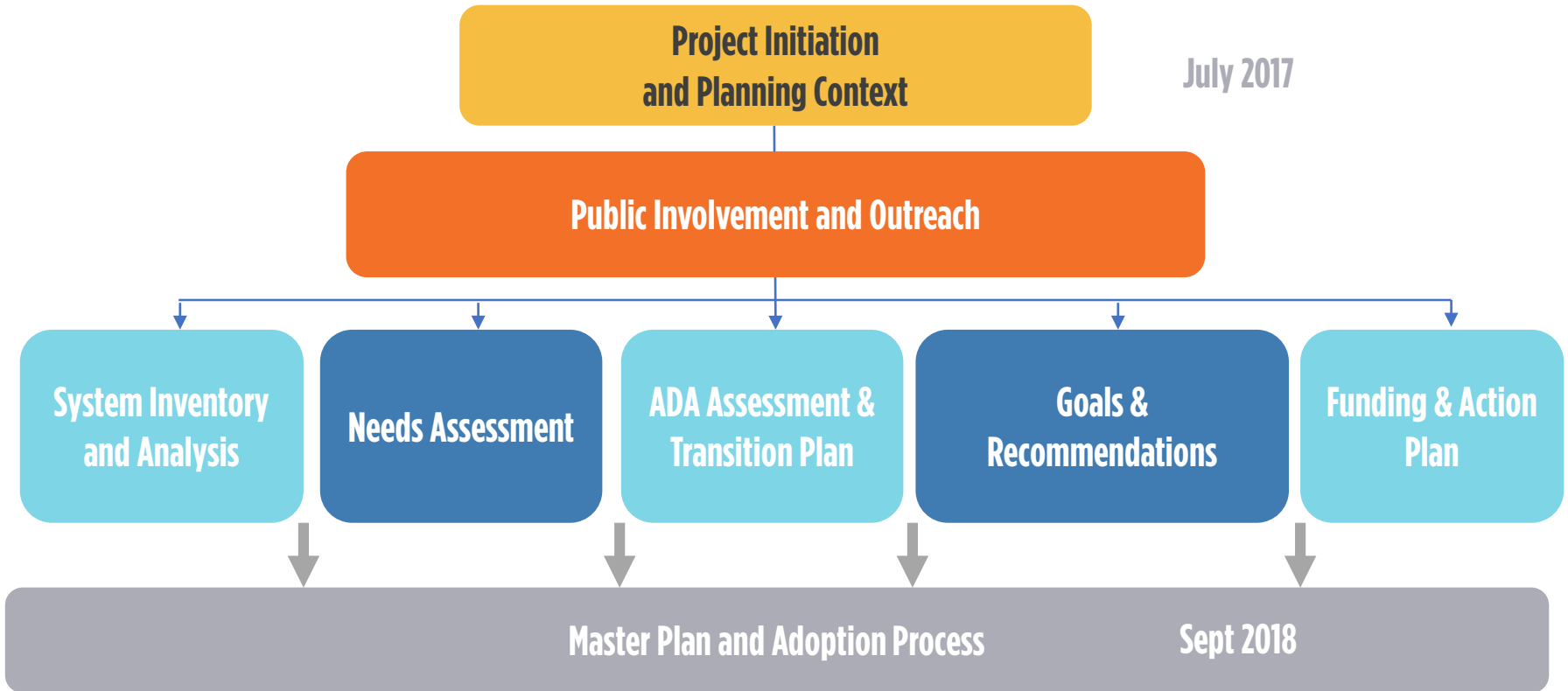
- I. Project Update
- II. Community Outreach Highlights
- III. Next Steps



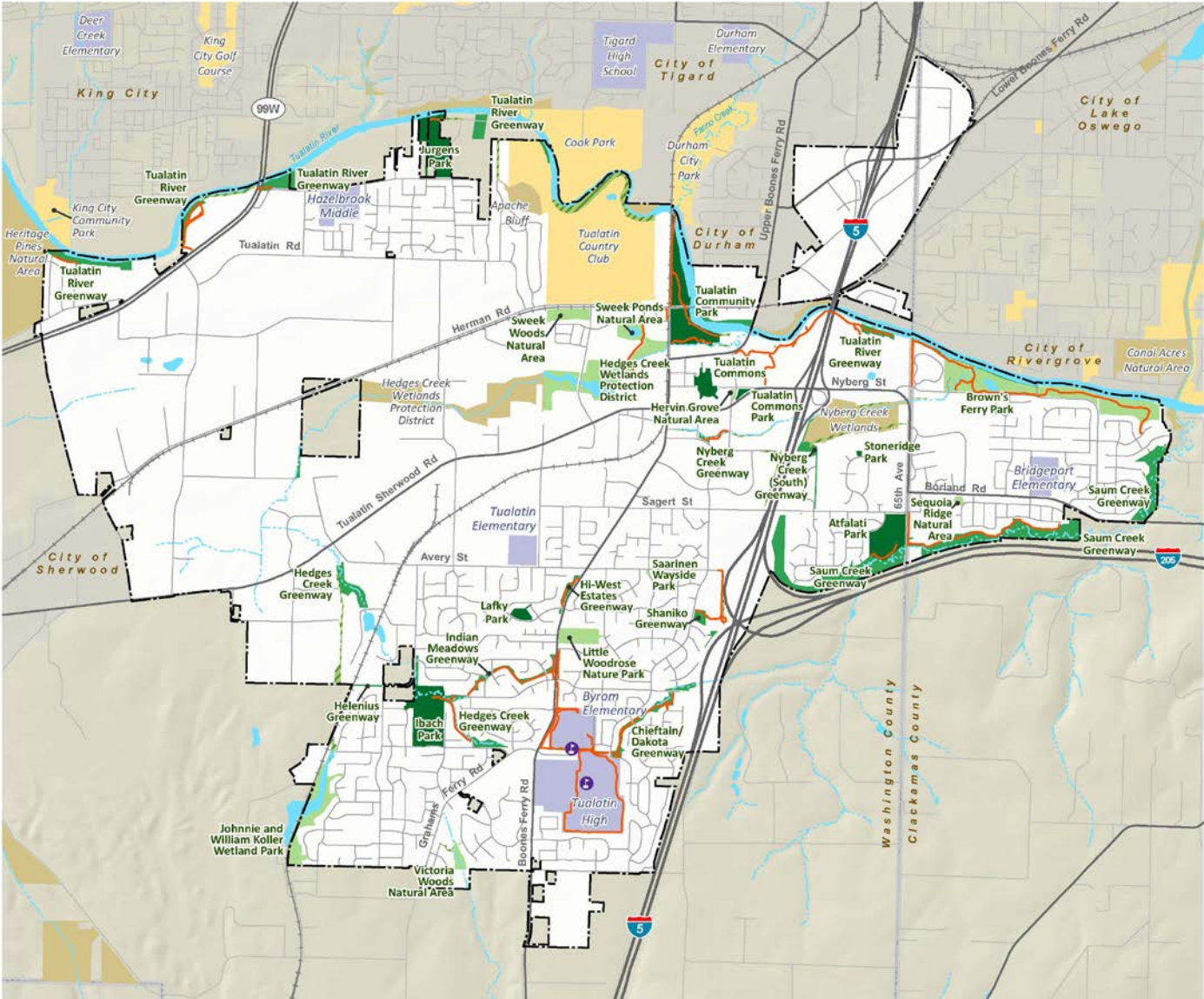
TUALATIN
Accessible, Inclusive & Vibrant
Parks and Recreation

PROJECT UPDATE

Planning Process



Parks, Natural Areas, and Recreation Resources



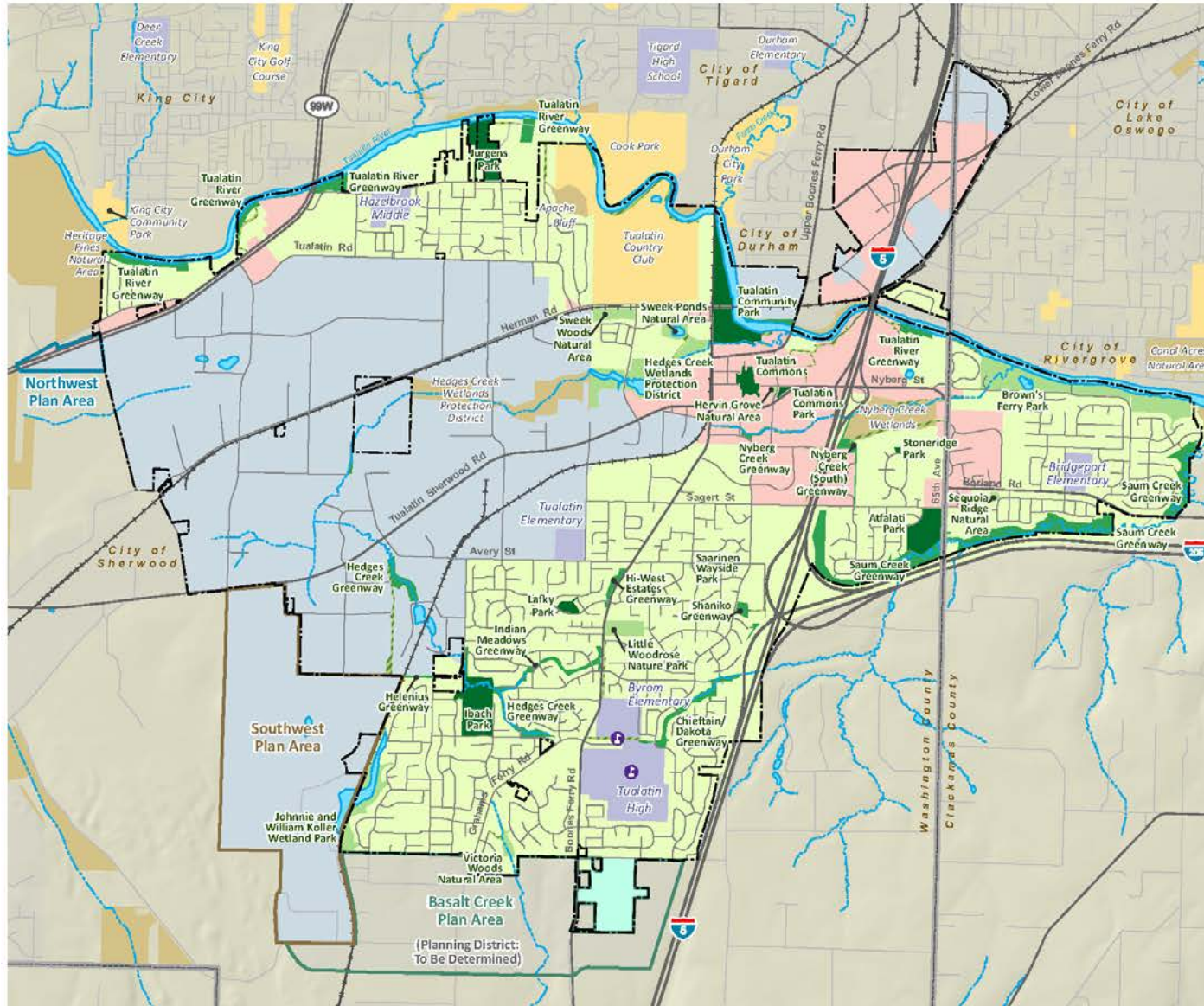
Park and Recreation Service Area (2035)



Parks & Recreation Master Plan

City of Tualatin

Map 2: Park and Recreation Service Area (2035)



- | | |
|------------------------|---------------------------|
| Planning Areas | Planning Districts |
| Southwest Plan Area | Residential |
| Northwest Plan Area | Commercial |
| Basalt Creek Plan Area | Industrial |
| | Institutional |
| | To Be Determined |

- Tualatin Park and Recreation Facilities**
- Parks
 - Greenways
 - Natural Parks & Areas
 - Shared Use Paths
 - School Joint-Use Facilities

- Other Park and Natural Areas**
- Other Developed Parks and Recreation Areas
 - Other Greenways and Natural Areas
 - Tigard-Tualatin District Schools

- Base Map Features**
- Tualatin City Boundary
 - County Boundary
 - Freeways/Highways
 - Major Arterials
 - Local Streets
 - Railroads
 - Streams
 - Rivers and Waterbodies

M I G Date: October 2017
 Sources: City of Tualatin, Parks and Recreation, 2017; Metro Regional Government 2017; Oregon Spatial Data Library, State of Oregon, 2017.

Disclaimer: This map is derived from various digital database sources. While an attempt has been made to provide an accurate map, the City of Tualatin, OR assumes no responsibility or liability for any errors or omissions in the information. This map is provided "as is".





TUALATIN
Accessible, Inclusive & Vibrant
Parks and Recreation

**COMMUNITY OUTREACH
HIGHLIGHTS**

Community Outreach

- Online Questionnaire
- Pop Up Activities
- Focus Groups
- Hispanic/Latino Outreach and Focus Group
- Stakeholder Interviews
- Park and Greenway Walks
- Total Public Involvement 2,892 People

Upcoming

- Community Workshop and Online Forum
- Draft Plan Review Forum

Community Outreach Themes

- Parks and recreation are important to Tualatin's quality of life.
- Trail connections and trail activities are a priority for community members.



Community Outreach Themes

- There is a need for improved facilities and expanded capacity for sports.
- A multi-use indoor facility is desired to support a variety of community interests and needs.
- Community members desire stronger, inclusive communications and marketing from the City and Community Services Department.

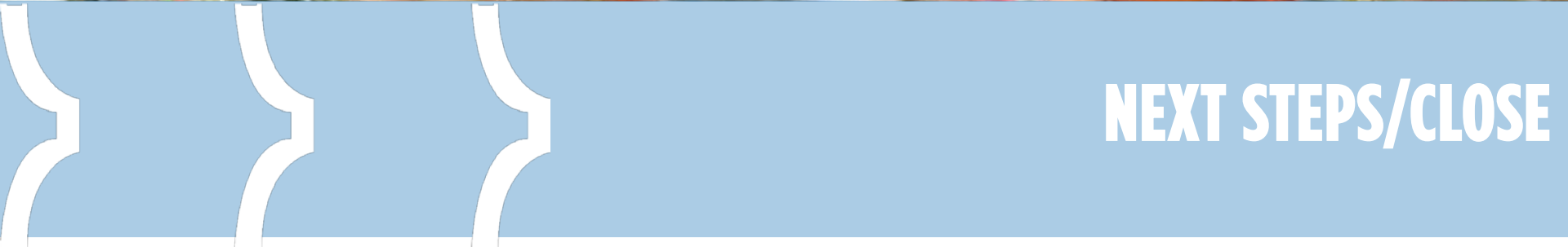
Community Outreach Themes

- A greater variety of activities and programs is needed to meet the needs and interests of people of all ages and cultures.
- Community members highly value Tualatin's natural resources and want access to natural features, especially the river, for recreation.





TUALATIN
Accessible, Inclusive & Vibrant
Parks and Recreation



NEXT STEPS/CLOSE

Next Steps

- Recommendations (Winter/Spring)
 - MIG and staff will develop Preliminary Recommendations
 - Project Advisory Committee (PAC) will review Preliminary Recommendations
 - Council will review and provide direction on the Preliminary Recommendations which will then become Draft Recommendations
- Continued ADA Evaluation and Prioritization (Ongoing)
- Funding and Action Plans (Summer/Fall)
- Plan Review and Adoption (Summer/Fall)



PARKS AND RECREATION MASTER PLAN

CITY COUNCIL WORK SESSION

Monday, January 22, 2018

