



MEETING NOTICE & AGENDA
TUALATIN PARK ADVISORY COMMITTEE
January 9, 2024 - 6:00 pm

Virtual Meeting

Options to Join

Phone: +1 253 215 8782 US (Tacoma)

Meeting ID: 834 2250 4046

Video: <https://us06web.zoom.us/j/83422504046>

"We are a group of enthusiastic advocates for the Parks & Recreation system
with a focus on the stewardship and enhancement of our community."

A. Call to Order

1. Roll Call

B. Approval of Minutes

1. December 5, 2023

C. Communications & Comments

1. Chair
2. Staff
3. Public

D. Old Business

1. Parks Bond Project Update
 - a. Project Status
 - b. Veterans Plaza Construction
2. Utility Fee Project Prioritization
 - a. Project Phases
 - b. Project Review & Discussion
 - c. Recommendation Consideration
3. Annual Report
 - a. Council Presentation Feb. 12

E. New Business

1. Basalt Creek Flagpole Property
 - a. Development Process
 - b. Design Concept
 - c. Approach Recommendation Consideration

2. Las Casitas Park
 - a. Playground Equipment
 - b. Splash Pad Features
3. 2024 Meeting Schedule
4. Updates
 - a. Programs
 - b. Projects
 - c. Operations
 - d. Volunteers

F. Upcoming Dates & Calendar Review

G. Committee Member Communications

H. Adjournment



Minutes

T UALATIN PARK ADVISORY COMMITTEE

December 5, 2023

Parks & Recreation Office

8511 SW Tualatin Road

Members Present:	Emma Gray, Carl Hosticka, Michael Klein, John Makepeace, Anthony Warren
Members Absent:	Beth Dittman (Excused), Ryan Wilson
Staff Present:	Rich Mueller, Parks Planning & Development Manager Kira Hein, Project Manager
Public:	None

A. Call to Order

Chair Emma Gray called the meeting to order at 6:01 pm.

Roll Call was taken with five members present and two absent.

B. Approval of Minutes

The approval of November 14, 2023 minutes were approved by a motion from Anthony Warren, and second by John Makepeace.

C. Communications & Comments

Emma Gray shared that she attended the last two Council work sessions regarding the City Climate Action Plan. She provided a summary of the plan status and content.

D. Old Business

1. Parks Bond Update

Rich Mueller introduced recently hired project manager, Kira Hein. Kira provided a detailed update on the status of bond projects and schedule.

2. Committee Goals

Emma Gray reviewed the status of committee goals established for 2023.

3. Utility Fee Prioritization

Staff provided the utility fee budget, current projects, and projects rated as five (poor condition). Committee members requested additional information and made comments on project list for near term, midterm and long term categories.

4. Annual Report

Emma Gray discussed the committee survey and mentioned updates to the report, which members will review next meeting.

5. Tree City USA

Rich Mueller reviewed the requirements and standards for Tree City USA. The 2023 application for Tree City USA recognition will be submitted the following week, but was not available for committee review. Committee members asked to receive a copy of the application.

D. New Business

1. Updates

Rich Mueller briefly reported on the Tualatin Holiday Light Parades, trail extension project and current maintenance operations.

Emma Gray reviewed the four volunteer park projects that were included in the packet.

G. Upcoming Dates & Calendar Review

Emma Gray reviewed the calendars, and asked members to log their volunteer hours.

H. Committee Member Communications

Kira Hein took a committee member photo.

I. Adjournment

Chair Emma Gray adjourned the meeting at 7:10 pm.

Bond Projects

12/28/2023

Projects	Phase 1 2023-26	Phase 2 2026-29	Status
Trail Connections (Est. \$4.5 MM) Nyberg Creek/Wetlands Design Construction	<div></div>	<div></div>	Design Proposals - winter 2024
New River Access (Est. 4 MM) Community Park Expansion Planning & Design Construction	<div></div>	<div></div>	Design Proposals - fall 2024
Athletic Fields (Est. 7 MM) Parks TCP field lights (replacement LED) Backstops & fencing Neighborhood park fields School shared use partnership Planning/Design Construction	<div></div>	<div></div>	Completion projected 1/26/24 Planning/Design - winter/spring 2024 In Planning with School District
Upgrades (Est. 5 MM) Veterans Plaza Other	<div></div>	<div></div>	Out for Construction Bid
Natural Areas (3.5 MM) Property acquisition Natural parkland WA County Community Park Expansion	<div></div>	<div></div>	Acquired May 2023 Aquired September 2023 Acquired May 2023
Play & Park Equipment (1 MM) Atfalati Ibach Jurgens Ibach (tween/teen area)	<div></div>		Completed December 2023 Completed December 2023 In Construction Construction spring 2024
Project Manager	<div></div>		Began November 13, 2023

Parks & Recreation Planning & Development

Project Definitions & Examples

Planning

Definition

- Deciding in Advance
 - What to do
 - How to do it
 - Who should do it
- Bridges the gap from where the organization is to where they want to be
- Establishes goals and arranges them in logical order

Examples

- P&R Master Plan (system wide)
- Basalt Creek Plan (area specific)
- Las Casitas Park Redesign Plan & Veterans Plaza Plan (site specific)

Design

Definition

- Process to Create New Park Facility or Recreation Feature
- Usually Represented by Detailed Plans & Specifications
- Includes Professional Services such as Engineering, Architectural, Permitting, Environmental Assessments, Land Survey & Geotech

Examples

- Construction Documents & Design
 - Plan Sheets (blueprints)
 - Studies (environmental, geotech)
 - Permitting (requirements, applications)
 - Contract documents & requirements

Construction

Definition

- Implementation of Design
- Building the Park Facility or Recreation Feature

Examples

- New Picnic Shelter at Atfalati Park
- Replacement Playground Equipment at Ibach & Atfalati Parks
- Field Light Replacement at Tualatin Community Park
- Tualatin River Greenway Trail behind New Seasons, Cabela's and Best Buy



UTILITY FEE

PROJECT SELECTION PROCESS



**ASSET CONDITION
SCORING**

**ASSET SEQUENCING
SCORING**

STAFF PROPOSES

**TPARK REVIEW &
RECOMMENDATION**

**BUDGET COMMITTEE
REVIEW &
RECOMMENDATION**

- System Balance
- Urgency
- Implementation
- Synergistic
- Sustainability
- Scale of Benefit



**CITY COUNCIL CONSIDERATION
OF APPROVAL**

Parks & Recreation Utility Fee - Prioritized Assets Condition 5

NEAR TERM

MID TERM

LONG TERM

Location	Name	Location	Name	Location	Name
Ltl Woodrose	Benches	Lake	Concrete Surface & Trees	TCP	Main Shelter
Ltl Woodrose	Trail Surface	Lake	Brick Surface	TCP	Trail Surface
Atfalati	Sports Field (lower)	Lake	Drain Grates	TCP	Trestle Parking
Atfalati	Drain Behind Field	Lake	Ground Lights	TCP	Sport Field Drainage
Atfalati	Basketball Surface	Lake	Electrical System	TCP	Parking Areas
Atfalati	Restrooms	Lake	Irrigation System	TCP	Playground
Ibach	Restrooms	Lake	Landscape Beds	Jurgens	Pavement (Asphalt Trail)
Ibach	Bleachers	Lake	Turf Area	Jurgens	Parking Lot Surface
BFRY	Fishing Area	Ibach	Parking Lot	Jurgens	Soccer Field
Lake	Lake Water Quality	Ibach	Drainage (Pathways)	BFRY	Community Center Parking Lot
Lake	Benches	Ltl Woodrose	Fences (perimeter)	BFRY	Parking Lot Irrigation & Landscaping
Lake	Concrete Planters/Trash Cans	Hedges Wetland	Boardwalk (behind Starbucks)	BFRY	Fence at entrance
TCP	Main Shelter Posts	TRGT	Boardwalk (behind Stonestrow)	BFRY	Bridges
TCP	Playground & Surface	Commons Park	Bench & Pad	BFRY	River Overlook
TCP	Boat Ramp	Commons Park	Path Surface (Concrete)	Commons Park	Landscape
TCP	Boat Launch Parking & Drive	Commons Park	Bumper Curb (wood)	Jurgens	Fence (Swanson)
TCP	Ped Crossing at Boat Launch	Saum Creek	Stairways	Jurgens	Fence (Rife)
TCP	Irrigation	TRGT	Boat Ramp	Shaniko	Soft Surface Trail
TCP	Rustic Shelter			Indian Meadows	Trail Surface
TCP	Parking Lots & Paths (ADA)			Chieftain Dakota	Trail Surface
TCP	Trail Surface (Asphalt)			Sweek Pond	Fencing
TCP	Bike/Ped Xing @ Drive				
Saum Creek	Trail Surface				
					12/26/2023

Park Assets Condition #5
2024 Projects

Project	Location	Project Phases			In Phase	Notes
		Planning	Design	Construction		
Entrance	Little Woodrose	\$ 10,000.00	\$ 145,000.00	\$ 200,000.00	Design	replacement/repair
Trail Surface	Little Woodrose				Design	
Amenities (bench, sign)	Little Woodrose				Design	
Parking	Little Woodrose				Design	
Stairs	Victoria Woods	\$ 10,000.00	\$ 55,000.00	\$ 135,000.00	Design	replacement
Ki-a-Kuts Bridge	Community Park	\$ 45,000.00	\$ 47,000.00	\$ 250,000.00	Design	pile repair
Office Ramp	Community Park		\$ 8,000.00	\$ 80,000.00	Design	ADA
Trail Connection	River Trail			\$ 150,000.00	Construction	99W boat access
Facility Assessment	Systemwide	\$ 155,000.00				buildings & shelters
Signs	Systemwide			\$ 150,000.00	Planning	replacement
M&O Level of Service	Systemwide	\$ 100,000.00			Planning	maint & operate
Total		\$ 320,000.00	\$ 255,000.00	\$ 965,000.00		
Grand Total		\$ 1,540,000.00				
Revenue/Available Funds		\$ 1,550,000.00				
Remaining Funds		\$ 10,000.00				

City of Tualatin Parks & Recreation Utility Fee Projects

[illegible]



Tualatin Parks Advisory Committee

2023 Annual Report

THIS IS US

“We are a group of enthusiastic advocates for the Parks & Recreation system with a focus on the stewardship and enhancement of our community.”

23 Meetings Attended

11 Activities Attended

357 Hours Volunteered



CURRENT MEMBERS

- Emma Gray, Chair
- Beth Dittman, Vice-Chair
- Carl Hosticka
- Michael Klein
- John Makepeace
- Anthony Warren
- Ryan, Student Member



WHAT WE DO

- Regular Meetings
 - Learn about Parks & Recreation activities
 - Evaluate and provide recommendations to City staff regarding policies, programs, & procedures
 - Provide feedback & guidance regarding priority of projects related to the bond & utility fee
- Represent Parks & Recreation System to City Council
- Attend Activities & Events
 - Advocate for participation & engagement in Parks & Recreation system
 - Provide community outreach
- Bee City Facilitation Committee
- Tree City USA Board

2023 ACCOMPLISHMENTS

Parks Bond

- Pursued implementation of parks bond projects
 - Play & Park Equipment
 - Assisted with playground equipment & surface selections for Ibach, Atfalati, & Jurgens Playgrounds
 - Athletic Field Improvements
 - Supported High School & Tualatin Community Park field LED light replacement
 - Natural Areas
 - Supported acquiring 20 acres within four separate properties
 - Veterans Plaza
 - Construction documents completed, work begins 2024
- Advocated for clear communication about parks-bond funded projects

PARKS & TRAILS BOND

UPDATE





PROJECTS UNDERWAY

Atfalati Park

- Playground Updates
- New Picnic Shelter

Community Park

- Field Lighting Upgrade

Plus more!

Scan the QR code for more information





2023 ACCOMPLISHMENTS

Diversity, Equity, and Inclusion

- Strengthened diverse committee membership
 - Audited membership as it relates to City's demographics
 - Reached out to Tualatinos
 - Reached out to advocates from Stoneridge visioning work
 - Supported renaming of Stoneridge Park to Las Casitas Park
 - Worked with Council to identify ways to seat members as interest arises
 - Connected with Equity Committee Planning Group re: their recommendations to council
- Held three in-person meetings



2023 ACCOMPLISHMENTS

Sustainability & Climate Action

- Promoted pollinator information & resources
- Provided community resources for trees & bees
- Recommended shade structures at playground renovations
- Suggested sustainable materials in park projects
- Supported energy efficient park improvements



2023 ACCOMPLISHMENTS

Collaboration

- Continued to host joint meetings with Arts Advisory Committee
- Invited other advisory committees to share meetings
 - Explored places where Parks & Recreation goals intersect with other Committee goals
 - Veterans Plaza Art Committee
- Regularly communicated with I.D.E.A. Committee
- Supported completion of the section of the Tualatin River Greenway trail at the new apartment complex
- Supported completion of Utility Fee projects
 - THS field light replacement
 - Restroom renovations (Tualatin Community Park & Commons Lake)
 - Little Woodrose access & safety improvement design
 - Highway 99 boat ramp access renovation design
 - Tualatin Community Park BBQ replacement
 - Ki-a-Kuts Bridge repair design
 - Victoria Woods stair replacement design (trail)



OUR 2024 GOALS

Sustainability

- Explore intersections between parks & recreation operations, programs & projects with City Council-approved Climate Action Plan
- Evaluate existing tree codes for climate resiliency updates & recommendations
- Promote pollinator information & resources
- Provide community resources for trees & bees

Parks Bond & Utility Fee Projects

- Assist staff with prioritizing Utility Fee projects
- Actively pursue implementation of parks bond projects
- Continue to support progress on new river access
- Advocate for continued progress for integrated trail system
- Continue to complete bond playground projects
- Support beginning utility fee facilities assessment

Diversity, Equity, and Inclusion

- Evaluate current park naming policies for possible updates & recommendations
- Work with Youth Advisory Council to recruit a student member

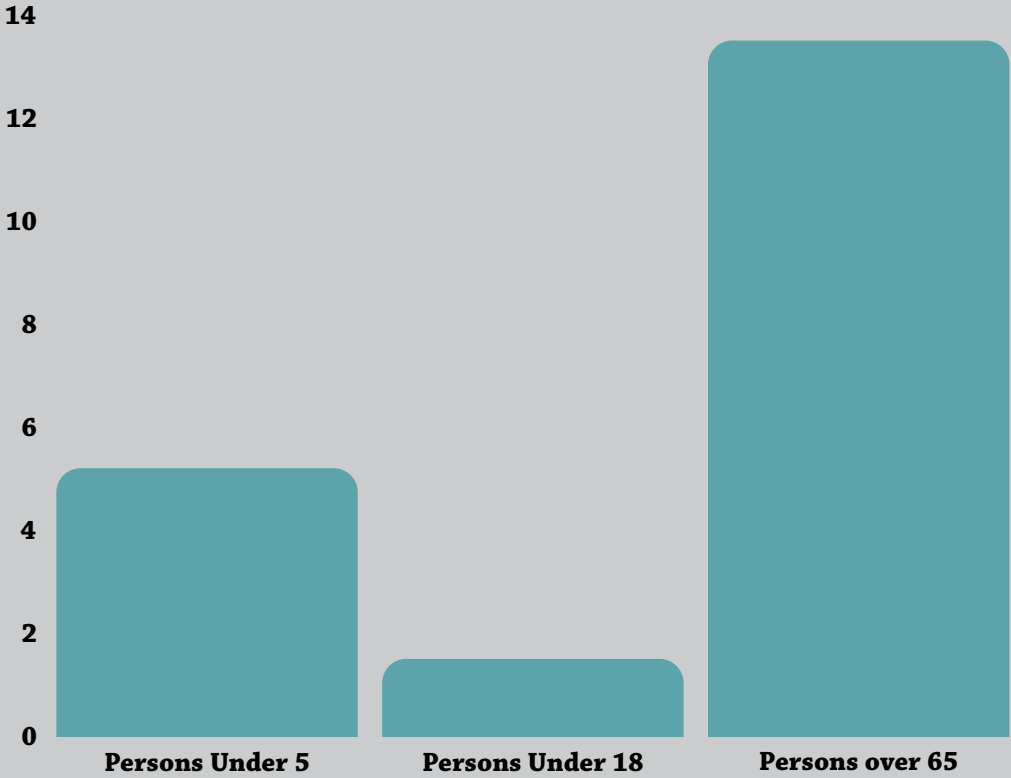
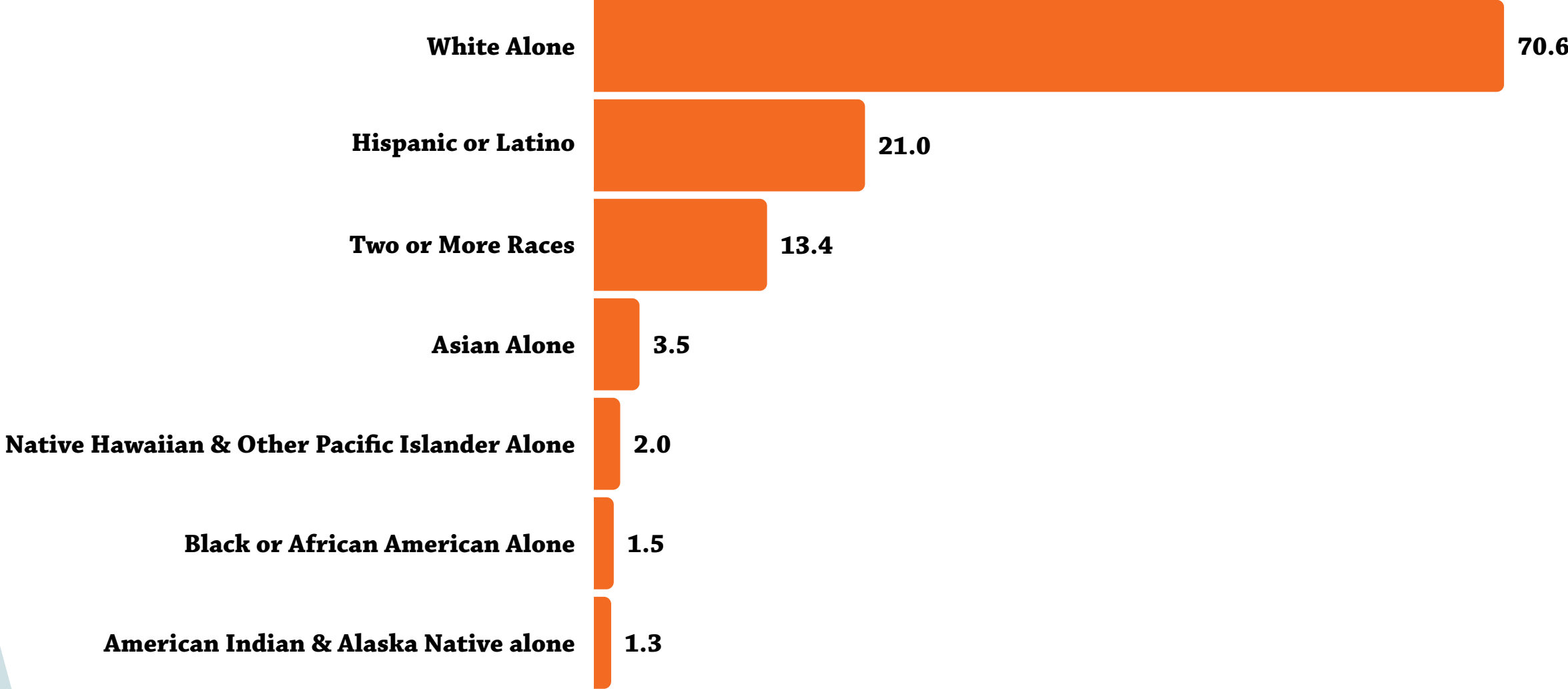


QUESTIONS & COMMENTS

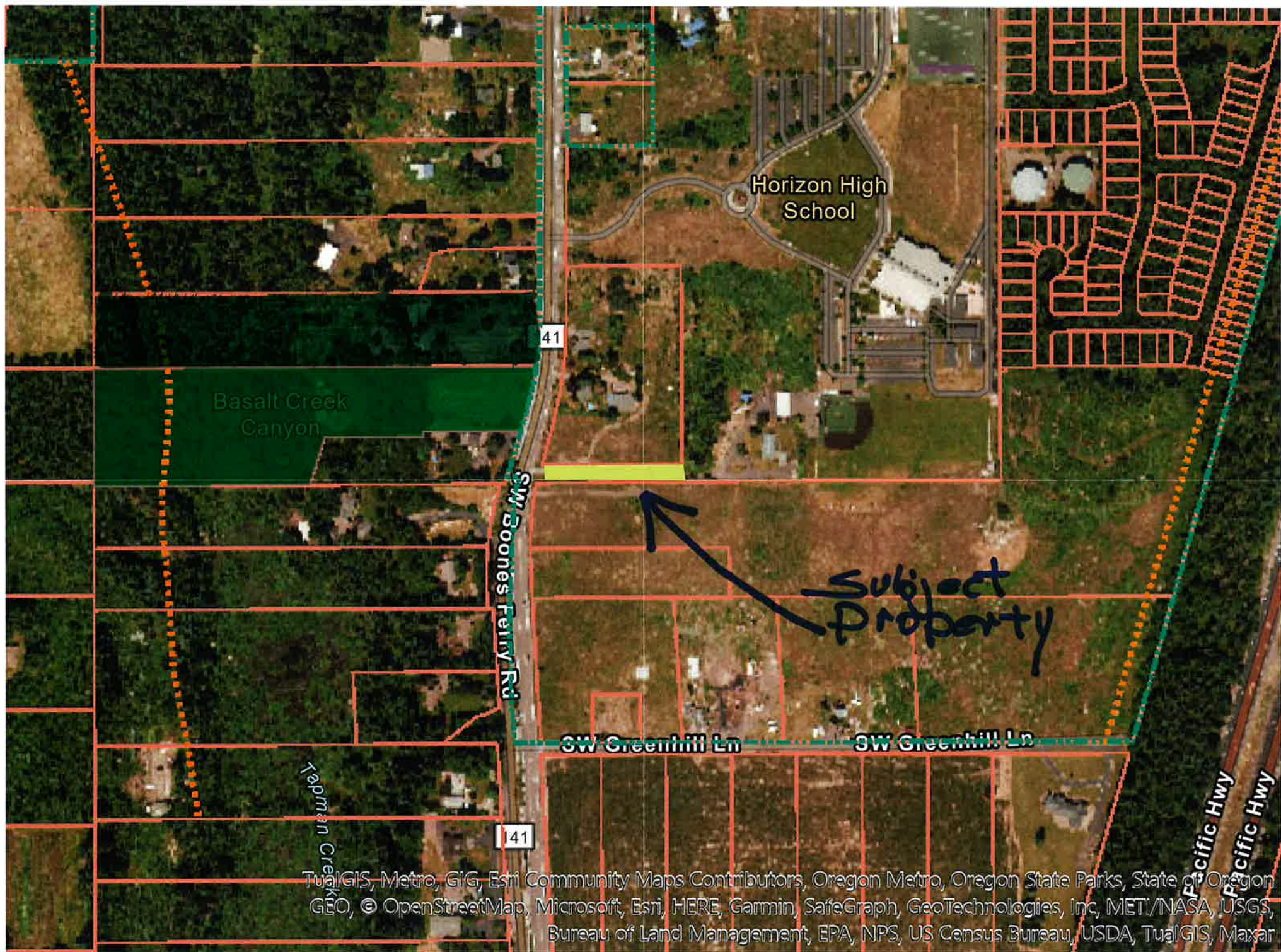
TPARK 2023 Annual Report

TPARK DEMOGRAPHICS

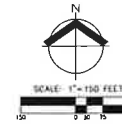
TUALATIN DEMOGRAPHICS*



*From US Census Bureau QuickFacts Tualatin city, Oregon



TualGIS, Metro, GIG, Esri Community Maps Contributors, Oregon Metro, Oregon State Parks, State of Oregon
GEO, © OpenStreetMap, Microsoft, Esri, HERE, Garmin, SafeGraph, GeoTechnologies, Inc, METI/NASA, USGS,
Bureau of Land Management, EPA, NPS, US Census Bureau, USDA, TualGIS, Maxar



DENSITY CALCULATIONS

	SQ. FT.	ACRES
GROSS SITE AREA	2,244,000	243.75
PUBLIC & ROAD EXEMPTION AREA	2,620,000	275.18
PRIVATE STREET ACCESS ROAD	1,500,000	162.50
SEWAGE TREATMENT AREA	1,200,000	129.00
COMMERCIAL AREA	1,400,000	150.00
PLANTATION DEDICATION AREA	1,200,000	129.00
NET DEVELOPABLE	1,100,000	118.75

	SQ. FT.	ACRES
MAXIMUM DENSITY (12 UNITS PER ACRE)	1,344,000	144.00
MINIMUM DENSITY (12 UNITS PER ACRE)	1,344,000	144.00
PLANNED DENSITY	1,100,000	118.75
REQUIRED OPEN SPACE AREA (10% GROSS)	224,400	24.00
OPEN SPACE PROVIDED	1,100,000	118.75

	SQ. FT.	ACRES
MAXIMUM LOT AREA	2,244,000	243.75
MINIMUM LOT AREA	1,100,000	118.75
AVERAGE LOT AREA (ALL LOTS)	1,100,000	118.75
AVERAGE LOT AREA FOR 12 DETACHED LOTS	1,100,000	118.75
AVERAGE LOT AREA FOR 12 ATTACHED LOTS	1,100,000	118.75

LOT DIMENSION	HOUSE TYPE	PH-1	PH-2	PH-3	PH-4	TOTAL UNITS
50'x100'	Detached	36	27	7	34	104
40'x100'	Detached	21	17	26	61	125
34'x100'	Detached	28	1	56	8	93
29'x100'	Attached	24	14	44	-	82

PRODUCT DISTRIBUTION PLAN AUTUMN SUNRISE SUBDIVISION LENNAR NORTHWEST, INC. TUALATIN, OREGON

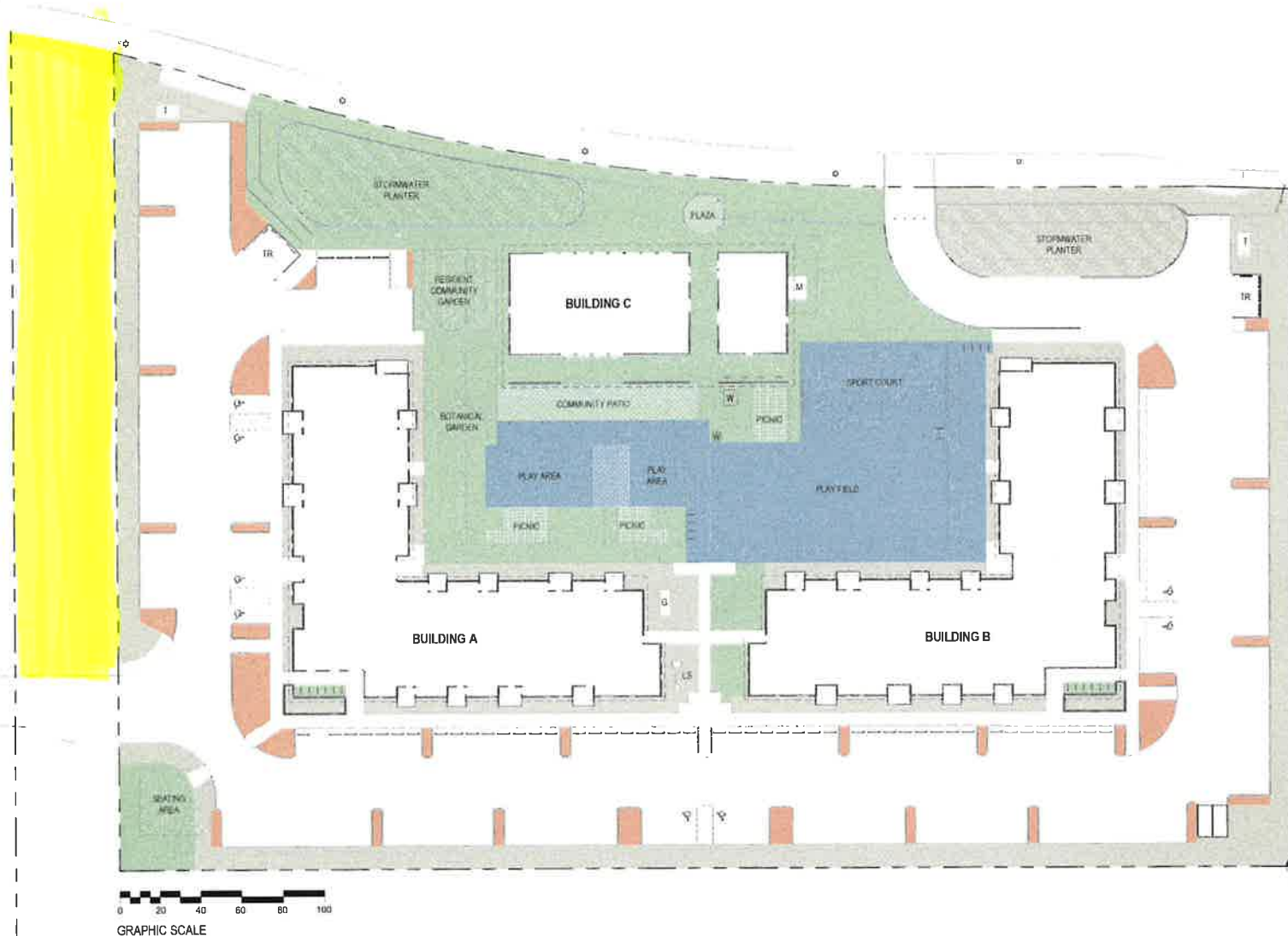
AKS
AKS ENGINEERING & ARCHITECTURE, LLC
10000 SW 10TH AVE, SUITE 100
TUALATIN, OR 97061
503.261.1000
WWW.AKS-LLC.COM

LENNAR



DATE	12/15/2014
DESIGNED BY	MS
CHECKED BY	MS
DATE	12/15/2014

PO-04



SITE PLAN ABBREVIATIONS:

T - TRANSFORMER
 TR - TRASH ENCLOSURE
 M - MECHANICAL UNIT
 G - GENERATOR
 LS - LIFT STATION
 W - EXISTING WELL HOUSE & TANK HOUSE

SITE PLAN LEGEND:

--- PROPERTY LINE
 --- RIGHT-OF-WAY DEDICATION
 --- PUBLIC UTILITY EASEMENT
 --- ROOF EDGE ABOVE
 --- OUTDOOR BIKE RACKS
 --- WHEEL STOPS
 --- ADA COMPLIANT PARKING
 --- CROSSWALK STRIPING

TDC 73A.200 - COMMON WALL DESIGN STANDARDS:

SHARED OUTDOOR AREAS
 REQUIRED: 300 SF X 116 UNITS = 34,800 SF
 PROVIDED: 35,688 SF

CHILDREN'S PLAY AREA
 REQUIRED: 150 SF X 116 UNITS = 17,400 SF
 PROVIDED: 17,557 SF

TDC 73B.030 - LANDSCAPING AREA STANDARDS:

ADDITIONAL LANDSCAPING
 REQUIRED: REFER TO A1.03
 PROVIDED: 30,268 SF

TDC 73C.210 - COMMON WALL PARKING LOT LANDSCAPING REQUIREMENTS:

LANDSCAPING ISLAND
 REQUIRED: 25 SF X 170 STALLS = 4,250 SF
 PROVIDED: 5,441 SF



SITE PLAN - OUTDOOR SPACE DIAGRAM

A1.02

Parque Las Casitas

Las Casitas Park







landscape
structures

Stoneridge Park

1147975-03-03-01 • 12.27.2023

ROSS
Recreation Equipment

©2023 Landscape Structures. All Rights Reserved.



landscape
structures

Stoneridge Park

1147975-03-03-02 • 12.27.2023

ROSS
Recreation Equipment

©2023 Landscape Structures. All Rights Reserved.



landscape
structures

Stoneridge Park

1147975-03-03-03 • 12.27.2023

ROSS
Recreation Equipment

©2023 Landscape Structures. All Rights Reserved.



landscape
structures

Stoneridge Park

1147975-03-03-04 • 12.27.2023

ROSS
Recreation Equipment

©2023 Landscape Structures. All Rights Reserved.



landscape
structures

Stoneridge Park

1147975-03-03-05 • 12.27.2023

ROSS
Recreation Equipment

©2023 Landscape Structures. All Rights Reserved.



Stoneridge Park

1147975-03-03-06 • 12.27.2023

ROSS
Recreation Equipment

©2023 Landscape Structures. All Rights Reserved.



landscape
structures

Stoneridge Park

1147975-03-03-07 • 12.27.2023

ROSS
Recreation Equipment

©2023 Landscape Structures. All Rights Reserved.



landscape
structures

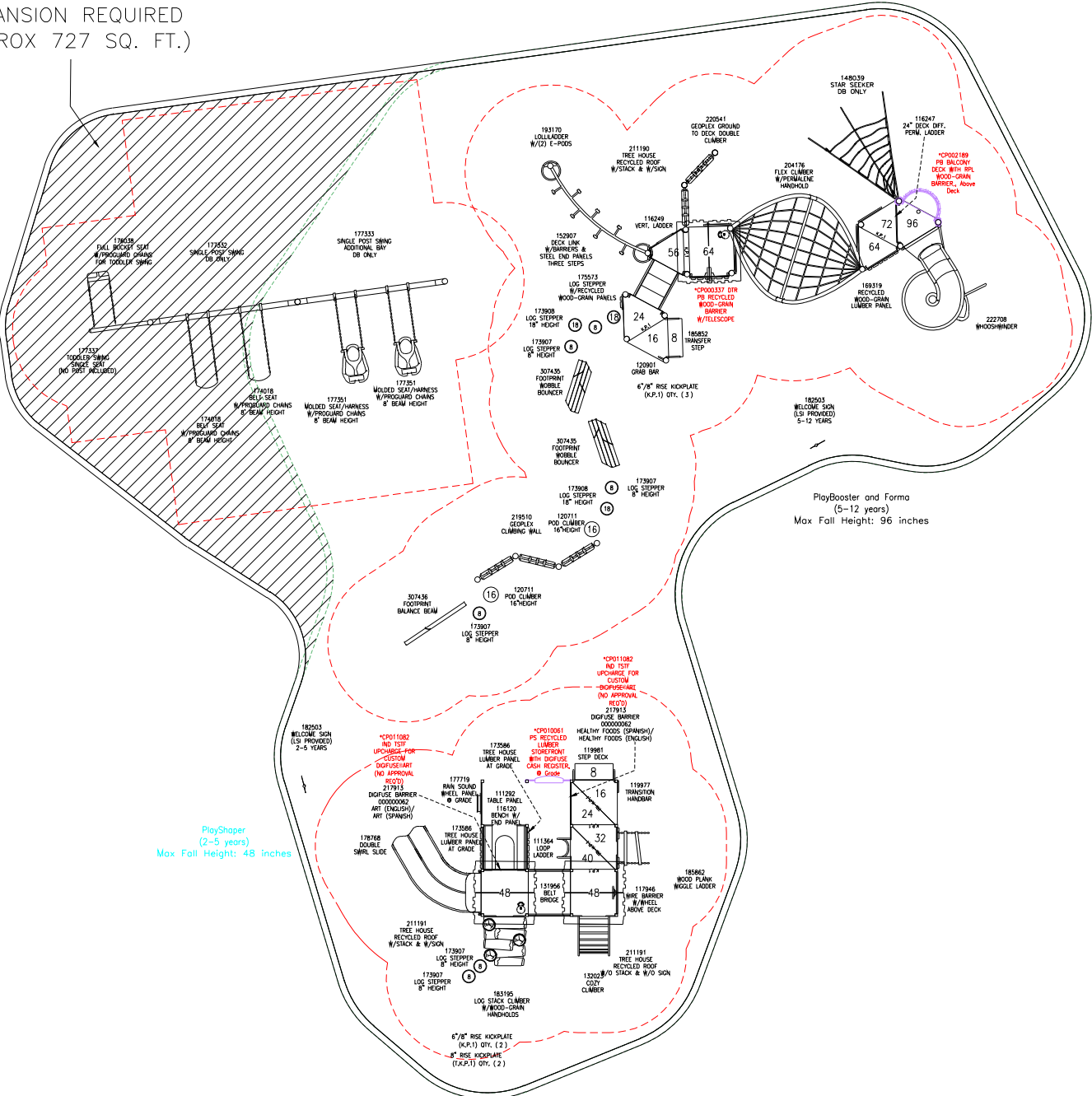
Stoneridge Park

1147975-03-03-08 • 12.27.2023

ROSS
Recreation Equipment

©2023 Landscape Structures. All Rights Reserved.

EXPANSION REQUIRED
(APPROX 727 SQ. FT.)

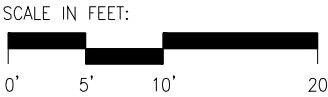


5-12

TOTAL ELEVATED PLAY COMPONENTS	8		
TOTAL ELEVATED COMPONENTS ACCESSIBLE BY RAMP	0	REQUIRED	0
TOTAL ELEVATED COMPONENTS ACCESSIBLE BY TRANSFER	4	REQUIRED	4
TOTAL ACCESSIBLE GROUND LEVEL COMPONENTS SHOWN	9	REQUIRED	3
TOTAL DIFFERENT TYPES OF GROUND LEVEL COMPONENTS	4	REQUIRED	4

2-5

TOTAL ELEVATED PLAY COMPONENTS	9		
TOTAL ELEVATED COMPONENTS ACCESSIBLE BY RAMP	0	REQUIRED	0
TOTAL ELEVATED COMPONENTS ACCESSIBLE BY TRANSFER	9	REQUIRED	5
TOTAL ACCESSIBLE GROUND LEVEL COMPONENTS SHOWN	4	REQUIRED	3
TOTAL DIFFERENT TYPES OF GROUND LEVEL COMPONENTS	4	REQUIRED	4



Stoneridge
Park
Tualatin, OR

Ross Recreation
Equipment Co
Len Fransen

SYSTEM TYPE:
PlayBooster/PlayShaper

DRAWING #:
1147975-03-03



The play components identified on this plan are IPMA certified. (Unless model number is preceded with *) the use and layout of these components conform to the requirements of ASTM F1487. To verify product certification, visit www.ipma.org

THIS PLAY AREA & PLAY EQUIPMENT IS DESIGNED FOR AGES 2-12 YEARS UNLESS OTHERWISE NOTED ON PLAN.

IT IS THE MANUFACTURERS OPINION THAT THIS PLAY AREA DOES CONFORM TO THE A.D.A. ACCESSIBILITY STANDARDS, ASSUMING AN ACCESSIBLE PROTECTIVE SURFACING IS PROVIDED, AS INDICATED, OR WITHIN THE ENTIRE USE ZONE.

THIS CONCEPTUAL PLAN WAS BASED ON INFORMATION AVAILABLE TO US. PRIOR TO CONSTRUCTION, DETAILED SITE INFORMATION INCLUDING SITE DIMENSIONS, TOPOGRAPHY, EXISTING UTILITIES, SOIL CONDITIONS, AND DRAINAGE SOLUTIONS SHOULD BE OBTAINED, EVALUATED, & UTILIZED IN THE FINAL DESIGN. PLEASE VERIFY ALL DIMENSIONS OF PLAY AREA, SIZE, ORIENTATION, AND LOCATION OF ALL EXISTING UTILITIES, EQUIPMENT, AND SITE FURNISHINGS PRIOR TO ORDERING. SLIDES SHOULD NOT FACE THE HOT AFTERNOON SUN.

CHOOSE A PROTECTIVE SURFACING MATERIAL THAT HAS A CRITICAL HEIGHT VALUE TO MEET THE MAXIMUM FALL HEIGHT FOR THE EQUIPMENT (REF. ASTM F1487 STANDARD CONSUMER SAFETY PERFORMANCE SPECIFICATION FOR PLAYGROUND EQUIPMENT FOR PUBLIC USE, SECTION 8 CURRENT REVISION). THE SUBSURFACE MUST BE WELL DRAINED. IF THE SOIL DOES NOT DRAIN NATURALLY IT MUST BE TILED OR SLOPED 1/8" TO 1/4" PER FOOT TO A STORM SEWER OR A "FRENCH DRAIN".

AREA OF ACCESSIBLE/PROTECTIVE SURFACING (POURED-IN-PLACE SUGGESTED)
4036 Sq. Ft.

DESIGNED BY:
JAG
COPYRIGHT: 12/22/23
LANDSCAPE STRUCTURES, INC.
601 7th STREET SOUTH - P.O. BOX 198
DELANO, MINNESOTA 55328
PH: 1-800-328-0035 FAX: 1-763-972-6091

10/13/23	1147975-03-02	JAG
10/4/23	1147975-03-01	JAG
Date	Previous Drawing #	Initials

KEY

D

CK







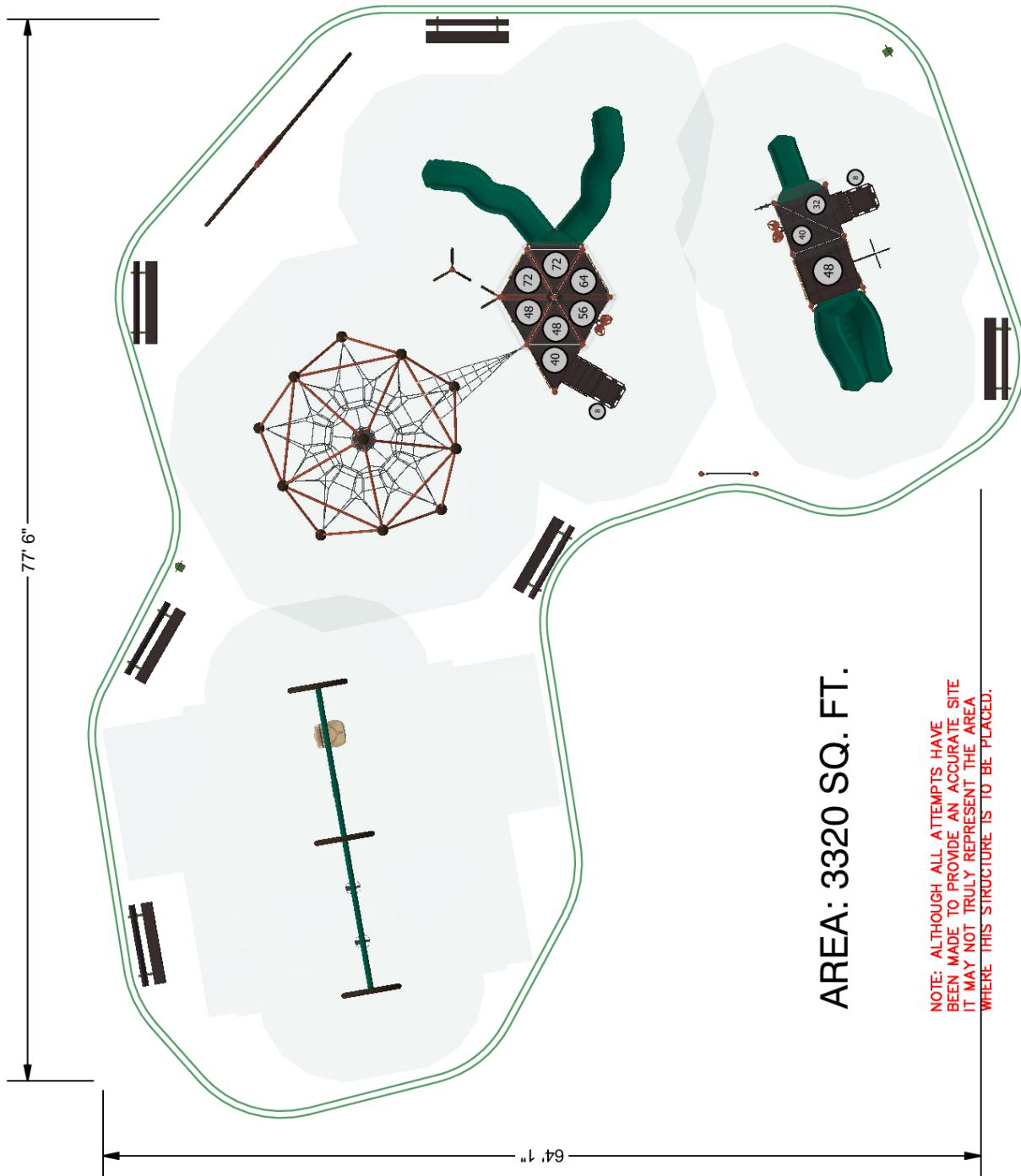


Buell Recreation

7327 Barnes Road #601 | Portland, OR 97725 | 503-922-1650

Proposal 907-133026-3 | 9/22/2023

OUR MISSION IS TO BRING
PLAY THAT MOVES YOU®
TO COMMUNITIES AROUND
THE WORLD



NOTE: ALTHOUGH ALL ATTEMPTS HAVE BEEN MADE TO PROVIDE AN ACCURATE SITE IT MAY NOT TRULY REPRESENT THE AREA WHERE THIS STRUCTURE IS TO BE PLACED.

OVERALL BOUNDING OF USE ZONES **The space requirements shown here are to ASTM standards. Requirements for other standards may be different.

Area: 4958.6 sq.ft.
Perimeter: 283 ft.
STRUCTURE SIZE: 1"x77' 6"
POST SIZE(S):

PLAYGROUND ACCESSIBILITY (Provided/Required)				
TOTAL EVENTS	ELEVATED EVENTS	TRANSFER ACCESSIBLE EVENTS	RAMP ACCESSIBLE EVENTS	TYPES OF GROUND EVENTS
20	9 / 5	9 / 0	0 / 0	13 / 3
				5 / 3

The use and layout of play components identified in this plan conform to the CPSC guidelines. U.S. CPSC recommends the separation of age groups in playground layouts.

SERIES Burke Basics | Nucleus | Intensity

SITE PLAN VIEW

GROUP:
5-12 Structure|2-5 Structure|StemPlay|Panel|Freestanding

DESIGNED FOR AGES:
5 to 12, 2 to 5, 2 to 12

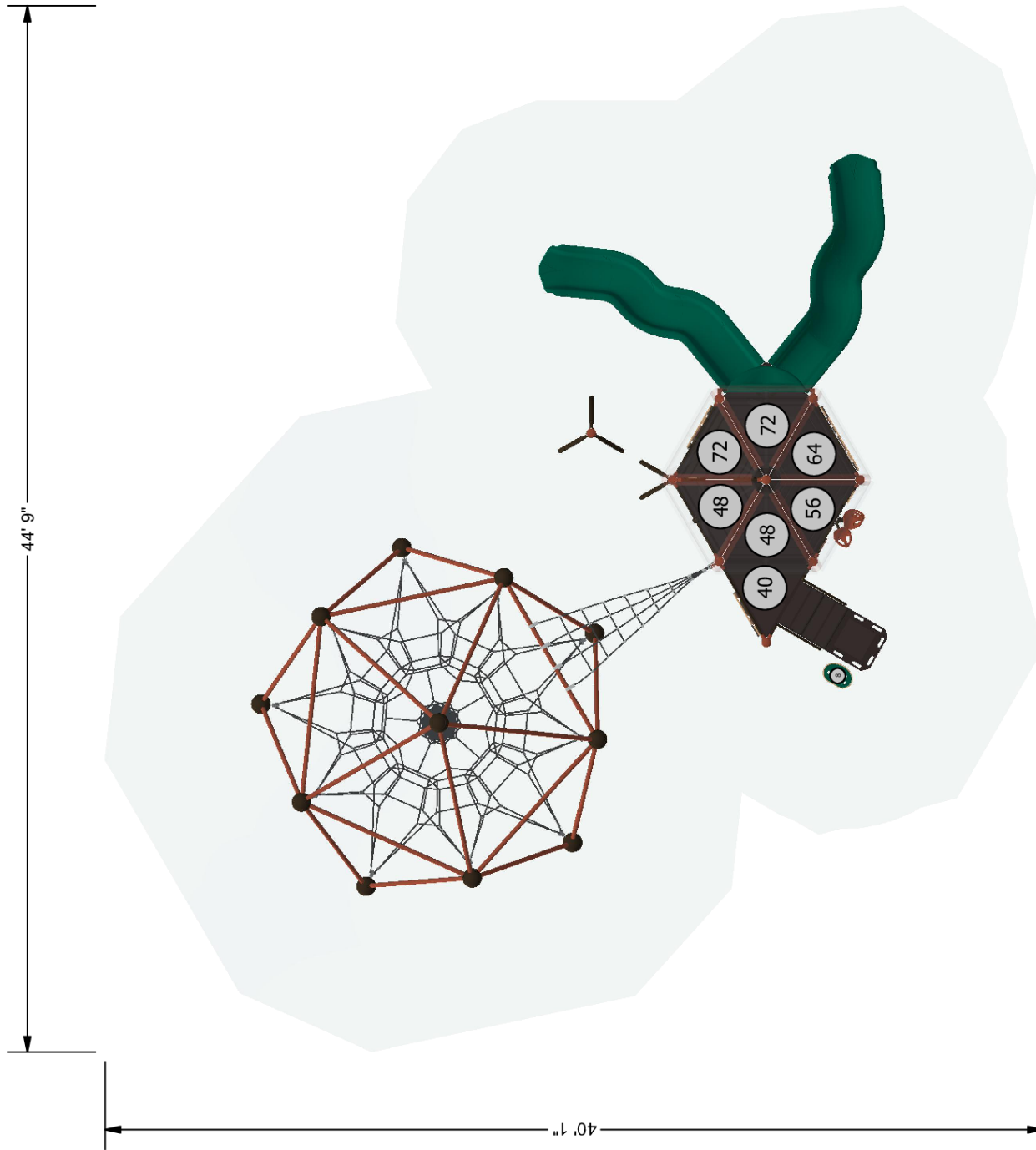
Stoneridge Park
Tualatin, OR 97062

Burke
PLAY THAT MOVES YOU.

09/22/2023

Buell Recreation
907-133026-3

Designer: Pa Der Vang



OVERALL BOUNDING OF USE ZONES ***The space requirements shown here are to ASTM standards. Requirements for other standards may be different.

Area: 1789.1 sq.ft.
Perimeter: 169.4 ft.
STRUCTURE SIZE: 1"x44' 9"
POST SIZE(S):

PLAYGROUND ACCESSIBILITY (Provided/Required)				
TOTAL EVENTS	ELEVATED EVENTS	TRANSFER ACCESSIBLE EVENTS	RAMP ACCESSIBLE EVENTS	TYPES OF GROUND EVENTS
20	9 / 5	9 / 0	0 / 0	13 / 3
				5 / 3

The use and layout of play components identified in this plan conform to the CPSC guidelines. U.S. CPSC recommends the separation of age groups in playground layouts.

SERIES Nucleus | Burke Basics | Intensity

SITE PLAN VIEW

GROUP:
5-12 Structure

Stoneridge Park
Tualatin, OR 97062

09/22/2023

DESIGNED FOR AGES:
5 to 12

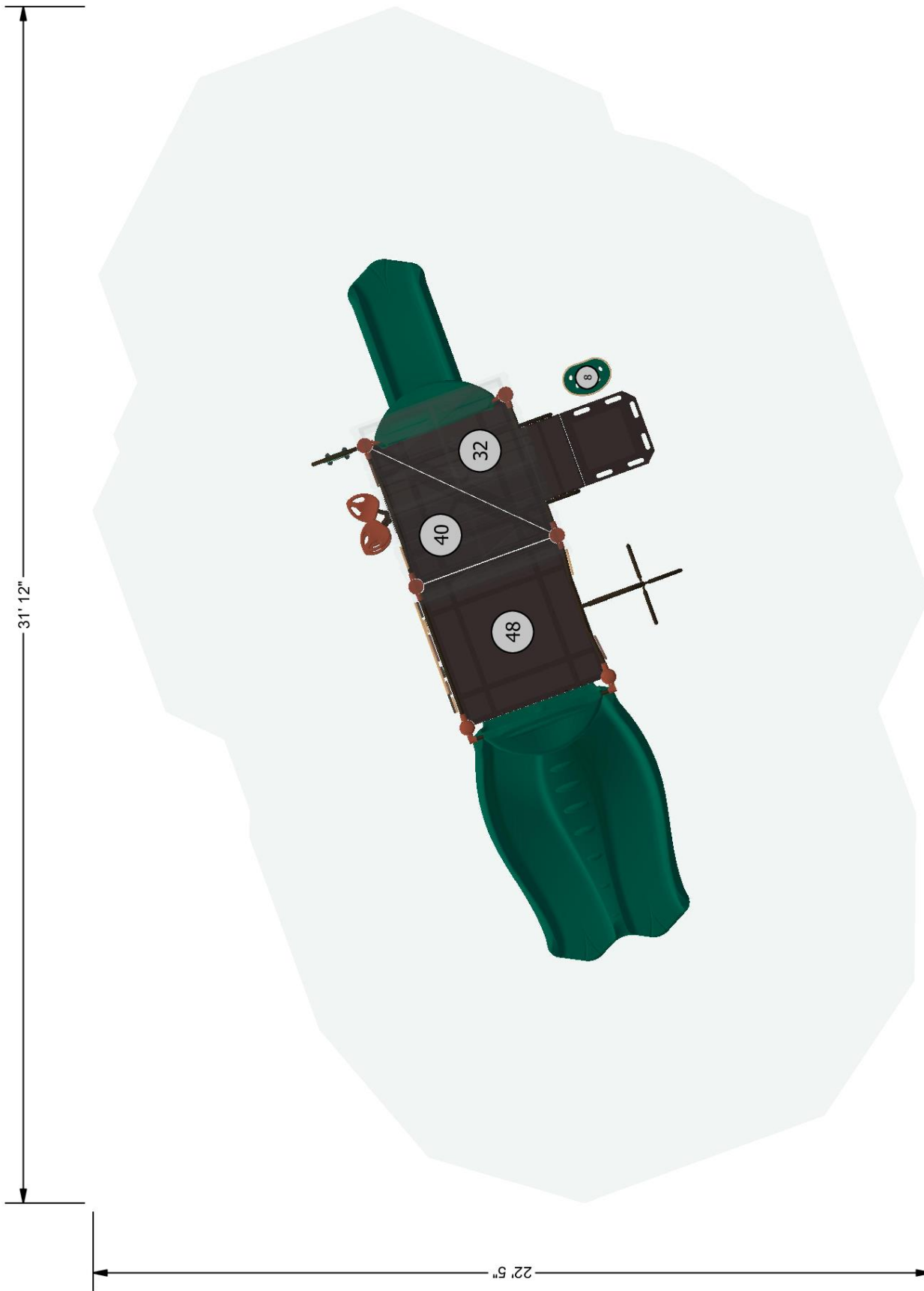
Burke
PLAY THAT MOVES YOU.

Buell Recreation
907-133026-3

Designer: Pa Der Vang

BCI BURKE COMPANY, LLC | PO BOX 549 FOND DU LAC, WI 54936-0549 | 920.921.9220 | BCIBURKE.COM

Warning: Accessible safety surfacing material is required beneath and around this equipment that is compliant with ASTM, CPSC, and ADAAG requirements.



The use and layout of play components identified in this plan conform to the CPSC guidelines. U.S. CPSC recommends the separation of age groups in playground layouts.

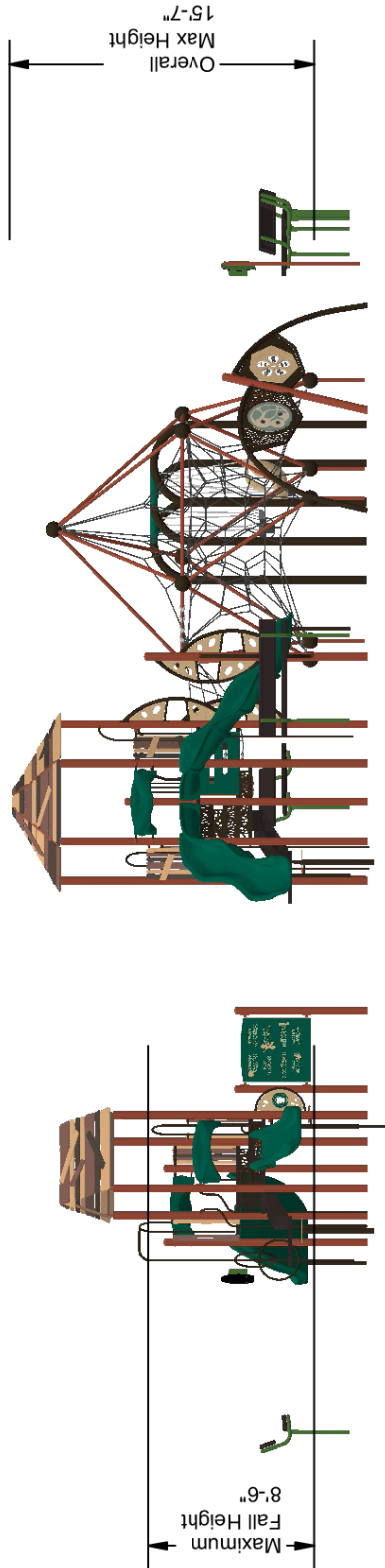
PLAYGROUND ACCESSIBILITY (Provided/Required)				
TOTAL EVENTS	ELEVATED EVENTS	TRANSFER ACCESSIBLE EVENTS	RAMP ACCESSIBLE EVENTS	TYPES OF GROUND EVENTS
20	9 / 5	9 / 0	0 / 0	13 / 3
				5 / 3

OVERALL BOUNDING OF USE ZONES
 Area: 713.3 sq. ft.
 Perimeter: 108.5 ft.
 STRUCTURE SIZE: 5"x31' 12"
 POST SIZE(S):

**The space requirements shown here are to ASTM standards. Requirements for other standards may be different.

SERIES Nucleus Burke Basics		SITE PLAN VIEW	
GROUP: 2-5 Structure	Stoneridge Park Tualatin, OR 97062	09/22/2023 Buell Recreation 907-133026-3 Designer: Pa Der Vang	
DESIGNED FOR AGES: 2 to 5			
BCI BURKE COMPANY, LLC PO BOX 549 FOND DU LAC, WI 54936-0549 920.921.9220 BCIBURKE.COM			

Warning: Accessible safety surfacing material is required beneath and around this equipment that is compliant with ASTM, CPSC, and ADAAG requirements.



SERIES Burke Basics | Nucleus | Intensity

ELEVATION VIEW

GROUP:
5-12 Structure|2-5
Structure|StemPlay|Panel|Freestanding

Stoneridge Park
Tualatin, OR 97062

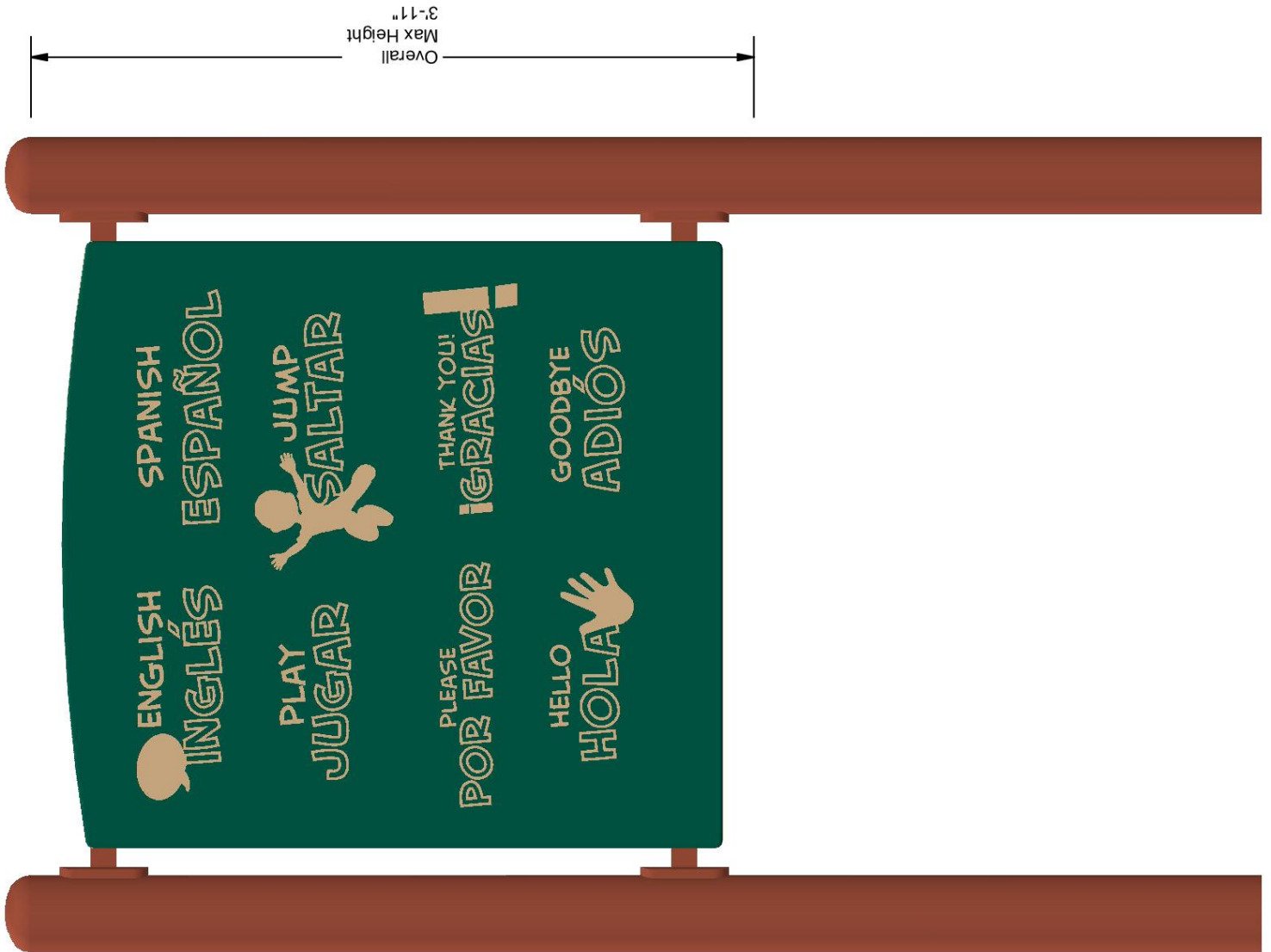
09/22/2023

Buell Recreation
907-133026-3

DESIGNED FOR AGES:
5 to 12, 2 to 5, 2 to 12

Burke
PLAY THAT MOVES YOU

Designer: Pa Der Vang



<div>SERIES</div> <div>Nucleus</div>	<div>ELEVATION VIEW</div>
<div> <div>GROUP:</div> <div>Panel</div> </div> <div> <div>DESIGNED FOR AGES:</div> <div>5 to 12</div> </div>	<div> <div>Stoneridge Park</div> <div>Tualatin, OR 97062</div> </div> <div> <div>Burke</div> <div>PLAY THAT MOVES YOU</div> </div> <div> <div>09/22/2023</div> <div>Buell Recreation</div> <div>907-133026-3</div> <div>Designer: Pa Der Vang</div> </div>
<div>BCI BURKE COMPANY, LLC PO BOX 549 FOND DU LAC, WI 54936-0549 920.921.9220 BCIBURKE.COM</div>	





SPLASHPAD DIMENSION

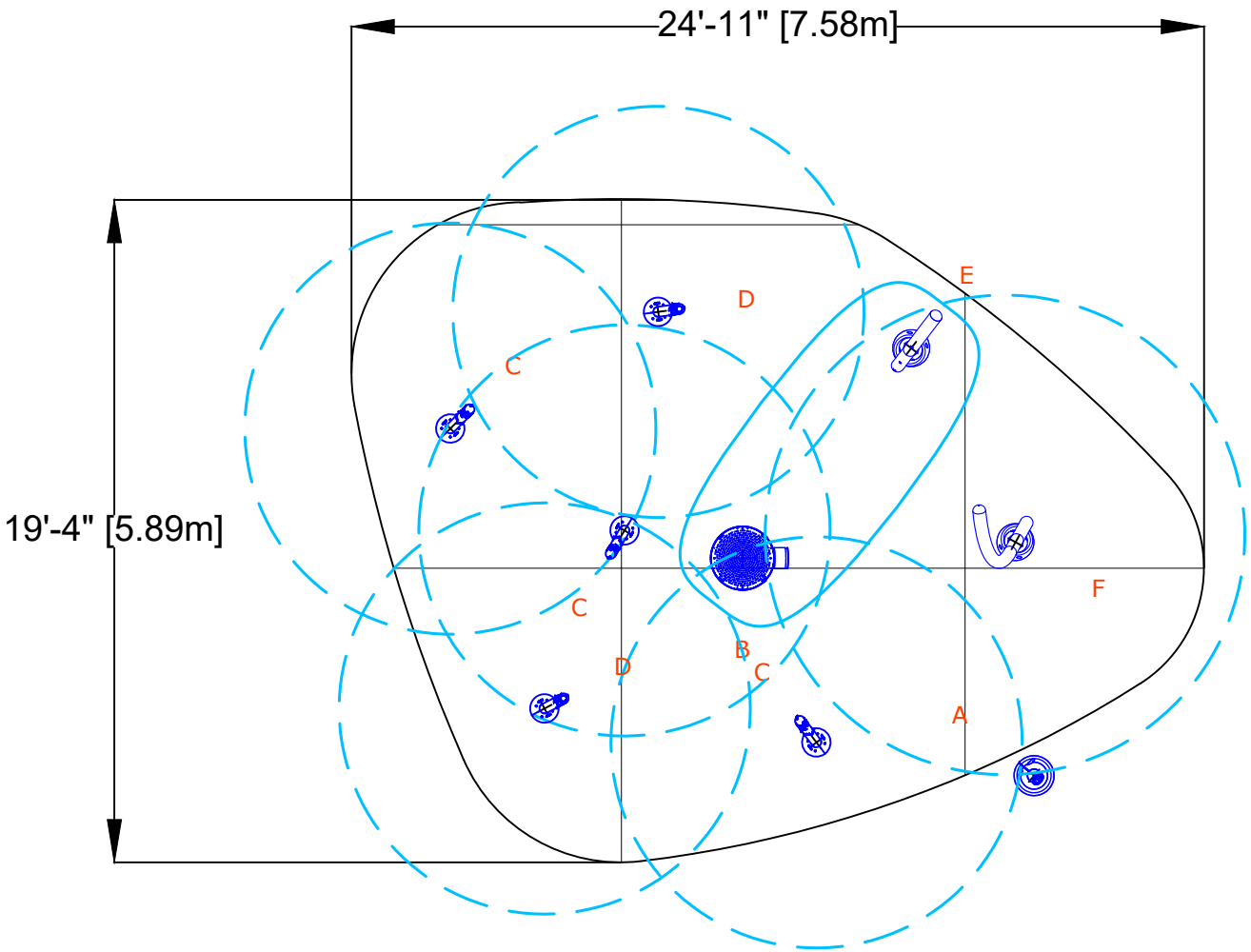
TOTAL AREA : 359 ft² 33m²

SPRAY AREA : 359 ft² 33m²

GRID SIZE : 10 x 10 ft 3 x 3m

PRODUCT LEGEND

REF	PRODUCT	QTY	GPM	LPM
A	Activator N°3 VOR 0611	1	0.0	0.0
B	Playsafe Drain N°4 VOR 1004	1		
C	Glomist VOR 7247	3	1.2	4.5
D	Glomist Nano VOR 7248	2	0.4	1.5
E	Silhouette N°3 VOR 7774	1	6.0	22.7
F	Silhouette N°4 VOR 7776	1	9.0	34.0
TOTAL		9	16.6	62.7



5'[1.5m] SPRAY FREE CONCRETE AREA ALL AROUND THE SPLASHPAD IS RECOMMENDED BY VORTEX
NOTE: QUANTITY AND LOCATION OF DRAINS BASED ON VORTEX RECOMMENDATIONS.
MODIFICATIONS MAY BE REQUIRED DUE TO SPECIFIC SITE CONDITIONS AND/OR LOCAL CODE.
DISCLAIMER * SPRAY ZONE EXCEEDING THE WET ZONE MAY RESULT INTO OVERSPRAY BEYOND THE
RECOMMENDED SPLASHPAD SPRAY FREE/DRY ZONE AND WILL BE THE CUSTOMER'S RESPONSIBILITY.

Application Information

Application ID: 352087
 Partner: Tualatin
 Program: Tree City USA
 Application Type: Tree City USA
 Start Date: 11/15/2023
 Status: Pending Arbor Day Foundation Review

Primary Contact Information

First Name	Last Name	
Tom	Steiger	
Title		
Parks Maintenance Manager		
Address 1		
18880 SW Martinazzi Ave		
Address 2		
City	State	Zip Code
Tualatin	Oregon	97062
Country		
United States		

Details

Mayor or Equivalent Contact Information

FirstName: Frank
LastName: Bubenik
Email: fbubenik@tualatin.gov
Phone: +1 (503) 691-3011
StreetAddress1: 18880 SW Martinazzi Ave
City: Tualatin
Country: United States
State: Oregon
County: Washington County
ZipCode: 97062

City Forestry Contact Information

FirstName: Tom
LastName: Steiger
Title: Parks Maintenance Manager
Email: tsteiger@tualatin.gov
Phone: +1 (503) 691-3085
City: Tualatin
Country: United States
State: Oregon
ZipCode: 97062

PR/Communications Contact Information

FirstName: Rich
LastName: Mueller
Email: rmueller@tualatin.gov
Phone: +1 (503) 691-3064
Country: United States

Partner Intake Information

PartnerName: Tualatin
Website: <https://www.tualatinoregon.gov/recreation/street-trees>
DomainVerification: 1
PartnerGroup: Tualatin
PartnerSubCategory: City
Population: 27863
WorksWithSchools: 1
AdditionalStickers: 18

Shipping address for recognition materials

ShippingAddress1: 18880 SW Martinazzi

City: Tualatin

County: Washington County

State: Oregon

Country: United States

ZipCode: 97062

Standard 1 - A Tree Board or Department

Select which best describes your community

Community has a Department Chair or City Manager

Tree Board Chairperson Contact Information

Additional Board Member Contact Information

Tree Board Meeting Frequency

Please Explain:

Department Chair or City Manager Contact Information

FirstName: Emma

LastName: Gray

Title: TPARK Chairperson

Email: emma@stevenandemma.com

Phone: +1(503)691-3061

StreetAddress1: 18880 SW Martinazzi Ave

City: Tualatin

Country: United States

State: Oregon

County: Washington County

ZipCode: 97062

Standard 2 - A Community Tree Ordinance

Our Attached Ordinance

Is in effect 24/7/365
 Addresses, at the very least, all public trees in our community
 Delegates authority over all public trees in our community
 Has clear guidance on the protecting, planting, maintaining, and/or removing of public trees

Copy and paste relevant language from your community's uploaded ordinance addressing delegation of authority over public trees in the box below.

Section 74.730 Notice of Violation. When the owner, lessee, occupant or person in charge of private grounds neglects or refuses to trim a tree, shrub or plant as provided in TDC 74.725, the Operations Director shall cause a written notice to trim such tree or trees, shrubs or plants to be served upon such owner, lessee, occupant or person in charge, within 10 days after the giving the notice; and if the owner, lessee or occupant or person in charge fails to do so, the person shall be guilty of violating this ordinance and subject to the penalties in TDC 74.760. The notice shall be served upon the owner, lessee, occupant or person in charge either by "Certified Mail-Return Receipt Requested", or by posting the same notice on the property or near to the trees, shrubs or plants to be trimmed.

Copy and paste relevant language from your community's uploaded ordinance addressing clear guidance over public trees in the box below.

It is unlawful for a person, without a written permit from the Operations Director, to re-move, destroy, break or injure a tree, plant or shrub, that is planted or growing in or upon a public right-of-way within the City , or cause, authorize, or procure a person to do so, authorize or procure a person to injure, misuse or re-move a device set for the protection of any tree, in or upon a public right-of-way

Date current tree ordinance was established

06/24/1996

Attach your community's current public tree care ordinance

completed

Ordinance Changes

My community ordinance has not changed this past calendar year

Standard 3 - A Community Forestry Program with an Annual Budget of at Least \$2 per Capita

Community Population

27863

Tree Planting and Initial Care

28750

Tree Maintenance

101304

Tree Removal

75370

Management

40858

Utility Line Clearance**Volunteer Time (Hours)**

4899

Are there other costs to report?**Other Costs****Other Costs Description****Total Expenditures:**

402070.20

Total Expenditures per capita:

14.43

Community Tree Management Statistics**Number of Trees Planted**

115

Number of Trees Pruned

3300

Number of Trees Removed

95

Optional Attachments**Annual work plan (if required by your state)**

completed

Supporting Budget Documents

completed

Standard 4 - An Arbor Day Observance and Proclamation

When did your community celebrate Arbor Day?

EventType: Arbor Day Observance

EventDate: 2023-04-08

EventFiles: Flash Report Arbor Day 4.8.23.pdf

ApplicationId: 352087

Attach your signed Arbor Day proclamation

completed

Signature

Mayor Signature

Mayor or Equivalent Signature Method

Signed Document

Download the PDF summary application, sign it, and upload it below.

Upload Signed Document

completed

First Name

Last Name

Professional Title

Date

As Mayor or Equivalent of the Community I certify that the information in this application is accurate by signing my name below.

By submitting your application, you are granting the Arbor Day Foundation and its assigns, licensees, successors, representatives, employees, program partners, and agents (collectively, the "Arbor Day Foundation"), the irrevocable and unrestricted right to use uploaded images from this application. You grant the Arbor Day Foundation the irrevocable right to use, copy, prepare derivative works from, distribute, and publish the provided photographs in any medium or means of distribution, including print, social media sites such as Facebook and Twitter and Arbor Day Foundation publications or on its website, for any lawful commercial or other purpose, and to register the copyright of such photographs throughout the world. By granting rights to the photos, you are representing that you own the rights to the uploaded pictures in this application and that Arbor Day Foundation has permission to use said photos.

1

By submitting your application, you agree to the Tree City USA terms and conditions.

**2024 Annual Plan
Small Tree City USA Community**

City of Tualatin Community Forestry Program

I. Tree Planting

- Offer ongoing volunteer tree planting in city parklands, greenways and natural areas (Jan-Dec)
- Continue tree planting partnerships with Friends of Trees, Clean Water Services, Tualatin Soil and Water Conservation District, SOLVE, Hands On Portland, Wetlands Conservancy, Just Serve, Tualatin Riverkeepers, schools, youth serving organizations, faith based organizations, corporate businesses and health care providers (Jan-Dec)
- Promote volunteer tree and shrub planting opportunities and accomplishments in quarterly parks and recreation guide (Feb, May, Aug, Dec)
- Street tree plantings (Sept-Dec)

II. Tree Maintenance

- Hire temporary summer staff to help with watering & maintenance (May-Sept)
- Survey trees in natural area for potential hazards, remove as needed (Jan-Dec)
- Native tree restoration in greenways and natural areas (Oct-April)
- Street tree pruning (Jan-Feb)
- Park tree pruning (March)

III. Administration

- Park & Tree Board monthly meetings (Jan-Dec)
- Review new development landscape/tree planting plans (Jan-Dec)
- Review residential tree permits for code compliance pertaining to street tree program. (Jan-Dec)

IV. Education Activities

- Enroll Parks staff in on-line Pesticide Recertification Courses(Jan)

- Continue partnership with organizations for student environmental education and community learning enhancement (Jan-Dec)
- Provide students environmental education outreach (May- Aug).
- Plan Arbor Week activities with schools, nonprofit organizations, agencies and businesses (Jan-Apr)
- Enhance the heritage trees web page and provide links on the City and department web pages (Sept-Dec)
- Arbor Week tree poster and photo contest (Jan-March)
- Arbor Week presentation and proclamation at City Council Meeting (March)
- Arbor Week activities, observance and tree planting (April)
- Environmental and tree education with high school and middle school students with tree planting (May)

City of Tualatin
COMMUNITY FORESTRY PLANNING CALENDAR

JANUARY	FEBRUARY	MARCH
Arbor Week poster and photo contest announcement Finalize native tree and shrub order for reforestation projects in natural areas Street tree pruning Arbor Week planning Review resident tree permits Review development tree plans TPARK meeting	Arbor Week Planning Street tree pruning Review resident tree permits Native tree restoration in green spaces Review development tree plans Arbor Week poster and photo contest TPARK meeting	Park tree pruning and maintenance Volunteer tree planting Arbor Week presentation and proclamation to City Council Native tree restoration in green spaces Review resident tree permits Review development tree plans TPARK meeting
APRIL	MAY	JUNE
Arbor Day ceremony and volunteer tree planting (April 10) Native tree restoration in green spaces Review resident tree permits Review development tree plans TPARK meeting Park & Tree Board Meeting	Tree inventory and inspection Environmental and tree education for high school/middle school students with tree planting May 10-14 Review resident tree permits TPARK meeting Review development tree plans	Tree inventory and inspection Water and plant care of new trees Site preparations for future restoration work Review resident tree permits TPARK meeting Review development tree plans

	Park & Tree Board Meeting	Park & Tree Board Meeting
JULY	AUGUST	SEPTEMBER
Water and plant care of new trees with volunteers Plan next year's tree plantings Volunteer tree planting Review resident tree permits Review development tree plans TPARK meeting	Tree inspections Order street trees for fall plantings Volunteer tree planting Water and plant care of new trees with volunteers Review resident tree permits Review development tree plans TPARK meeting	Finalize tree planting plans for next year Volunteer tree plantings Water and plant care of new trees with volunteers Review resident tree permits Review development tree plans TPARK meeting
OCTOBER	NOVEMBER	DECEMBER
Volunteer tree planting Staff plant street trees Review resident tree permits Review development tree plans Native tree restoration in green spaces TPARK meeting	Work on TCUSA application Volunteer tree plantings Staff plants street trees Native tree restoration in green spaces Review resident tree permits Review development tree plans TPARK meeting	Finish TCUSA application and mail it to ODF Staff plant street trees Native tree restoration in green spaces Review resident tree permits Review development tree plans TPARK meeting



Put Down Roots in Tualatin Tualatin Community Park Arbor Day - April 8, 2023



Volunteers—Keeping Tualatin Green and Growing!

- 175 incredible volunteers planted and mulched 900 native trees and shrubs to impact stream health and improve habitat diversity along Hedges Creek.
- Mayor Bubenik and PGE CEO Maria Pope planted the annual heritage tree.
- Volunteers came from PGE, Tigard High School Tualatin High School, Scouts, Tualatin Riverkeepers, Hazelbrook Middle School, A&R Solar, Applied Materials, Central Catholic Rams and Tualatin citizens and families.
- Thank you to our community partners, Friends of Trees, PGE and the Oregon Bee Atlas. Congratulations to Shelby Bell, Arbor Day poetry contest winner.
- Thank you City Staff: Kelsey Parker, Miguel Gonzales and Tom Steiger for site preparation and engaging volunteers in meaningful work.





J A N U A R Y

/ 2 0 2 4

SUNDAY	MONDAY	TUESDAY	WEDNESDAY	THURSDAY	FRIDAY	SATURDAY
31	1 Holiday-City Closed	2	3	4	5	6
7	8 City Council Meeting	9 TPARK Meeting	10	11	12	13
14	15 Holiday-City Closed	16	17	18	19	20
21	22 City Council Meeting	23	24	25	26	27
28	29	30	31	1	2	3



FEBRUARY

Share the Love all month

/ 2024

SUNDAY	MONDAY	TUESDAY	WEDNESDAY	THURSDAY	FRIDAY	SATURDAY
28	29	30	31	1	2	3
4	5	6	7	8	9	10
11	12 City Council Meeting	13 TPARK Meeting	14	15	16	17
18	19 Holiday-City Closed	20	21	22	23	24
25	26 City Council Meeting	27	28	29	1	2