



**MEETING NOTICE & AGENDA  
TUALATIN PARK ADVISORY COMMITTEE  
September 12, 2023 - 6:00 pm**

**Parks & Recreation Office**  
8511 SW Tualatin Road  
(in Tualatin Community Park)

Option to Join Virtually  
Phone: +1 253 215 8782 US (Tacoma)  
Meeting ID: 819 8760 2395

Video: <https://us06web.zoom.us/j/81987602395>

---

“We are a group of enthusiastic advocates for the Parks & Recreation system with a focus on the stewardship and enhancement of our community.”

**A. Call to Order**

1. Roll Call

**B. Approval of Minutes**

1. August 8, 2023

**C. Communications & Comments**

1. Chair
2. Staff
3. Public

**D. Old Business**

1. Parks Bond Projects Update
  - a. Project Manager Position
  - b. Projects Status & Schedule
2. [Committee Goals](#) Review
3. Stoneridge Park Update
  - a. Design Concept
  - b. Design Process

**E. New Business**

1. Updates
  - a. Programs
  - b. Projects
  - c. Operations
  - d. Volunteers
2. Utility Fee Projects
  - a. Review & Recommendation Schedule

**F. Upcoming Dates & Calendar Review**

1. Climate Action Plan (October meeting)

**G. Committee Member Communications**

**H. Adjournment**



## Minutes

### T UALATIN PARK ADVISORY COMMITTEE August 8, 2023

**Parks & Recreation Office**  
8511 SW Tualatin Road  
Virtual Availability

---

<b>Members Present:</b>	Beth Dittman, Emma Gray, Michael Klein, John Makepeace, Anthony Warren, Ryan Wilson
<b>Members Absent:</b>	Carl Hosticka (Excused)
<b>Staff Present:</b>	Ross Hoover, Parks & Recreation Director Rich Mueller, Parks Planning & Development Manager Kyla Cesca, Office Coordinator
<b>Public:</b>	Noelia Ruiz, Spanish Interrupter Jacinta Rendon García

---

#### A. Call to Order

Chair Emma Gray called the meeting to order at 6:03 pm.  
Roll Call was taken with six members present and one absent.

#### B. Approval of Minutes

The approval of the minutes of the June 20, 2023 meeting were approved by a motion from Anthony Warren, and second by Beth Dittman.

The approval of the minutes of the July 11, 2023 meeting were approved by a motion from Michael Klein, and second by Emma Gray.

#### C. Communications & Comments

1. Chair

Emma Gray welcomed members of the public to the meeting, but recognized none were present at the start of the meeting. Emma introduced Noelia Ruiz and shared best meeting practices when using a translator.

2. Staff

Ross Hoover gave a brief update on the hiring process for a Project Manager position. Rich Mueller asked for the status of the parks tour, and Ross indicated he was looking into the possibility in September.

3. Public

None

#### D. Old Business

1. Parks Bond Update

Rich Mueller presented the bond project list and shared updates for each of the project categories. Rich provided a more detailed presentation on the final planned playground

replacement for Ibach Park that includes removing outdated teen play features and replacing them with proposed rock climbing elements. Emma Gray engaged the committee in a discussion and asked for the consideration of a recommendation on the new equipment. Beth Dittman inquired about wheelchair access and shade. Rich indicated staff would look into both items. Anthony Warren asked how the new elements relate to the other playground at the park, and Rich answered this question. Michael Klein asked what type of surface would be installed and Rich responded with artificial grass. Finally, Beth inquired about drainage issues in the park near this play structure and Ross Hoover responded. Committee members unanimously approved recommending the rock climbing elements on a motion from Beth Dittman, and a second from Anthony Warren.

2. **Committee Goals**

Emma Gray reviewed and discussed committee goals.

3. **Stoneridge Park Project**

Rich Mueller reported on the status of the Stoneridge Park construction design and documents phase. Kyla Cesca shared the results of the latest community engagement campaign asking community members to rename the park. Over 450 community members participated in the process and chose Parque Las Casitas/Las Casitas Park as the preferred name. Kyla asked committee members to consider recommending changing the park name to City Council. Committee members were enthusiastic about the thorough engagement of the neighborhood. The committee unanimously recommended to City Council a park name change to Parque Las Casitas/Las Casitas Park on a motion by Beth Dittman, and a second from John Makepeace. Community member Jacinta Rendon, who joined the meeting after the translator had signed off, shared positive comments about the new name through interpretation provided by Beth Dittman.

**F. Updates**

a. **Programs**

Ross Hoover provided an update on programs. Beth Dittman inquired about the lengthy summer camp waitlist and how to provide more much need programming. Ross Hoover provided an answer that included the need for more staffing and space. John Makepeace suggested parents might be willing to volunteer to help fill staffing needs. Beth Dittman suggested we look into more funding options that would provide staffing.

b. **Projects**

Ross Hoover provided an update on projects.

c. **Operations**

None

d. **Volunteers**

None

**G. Upcoming Dates & Calendar Review**

Emma Gray reviewed the calendars.

**H. Committee Member Communications**













None

**I. Adjournment**

Chair Emma Gray adjourned the meeting at 6:53 pm.

# Bond Projects

9/5/2023

<u>Projects</u>	<u>Phase 1</u> 2023-26	<u>Phase 2</u> 2026-29	<u>Status</u>
<b>Trail Connections</b> (Est. \$4.5 MM) Nyberg Creek/Wetlands Design Construction			Design Proposals - spring 2024
<b>New River Access</b> (Est. 4 MM) Community Park Expansion Planning & Design Construction			Design Proposals - winter 2023/24
<b>Athletic Fields</b> (Est. 7 MM) Parks TCP field lights (replacement LED) Backstops & fencing Neighborhood park fields School shared use partnership Planning/Design Construction			Replacement Oct. - Nov. 2023 Planning Stage  Planning with School District
<b>Upgrades</b> (Est. 5 MM) Veterans Plaza Other			90% Construction Design
<b>Natural Areas</b> (3.5 MM) Property acquisition Natural parkland WA County Community Park Expansion			Acquired May 2023 County approved/City Council considers 9/11 Acquired May 2023
<b>Play &amp; Park Equipment</b> (1 MM) Atfalati Ibach Jurgens			Replacement began 9/5/23 Replacement Install fall 2023 Replacement winter 2024
<b>Project Manager</b>			Employee hired & began work 8/25/23



City of

**TUALATIN**  
*Basalt Creek*  
PARKS & RECREATION  
**PLAN**

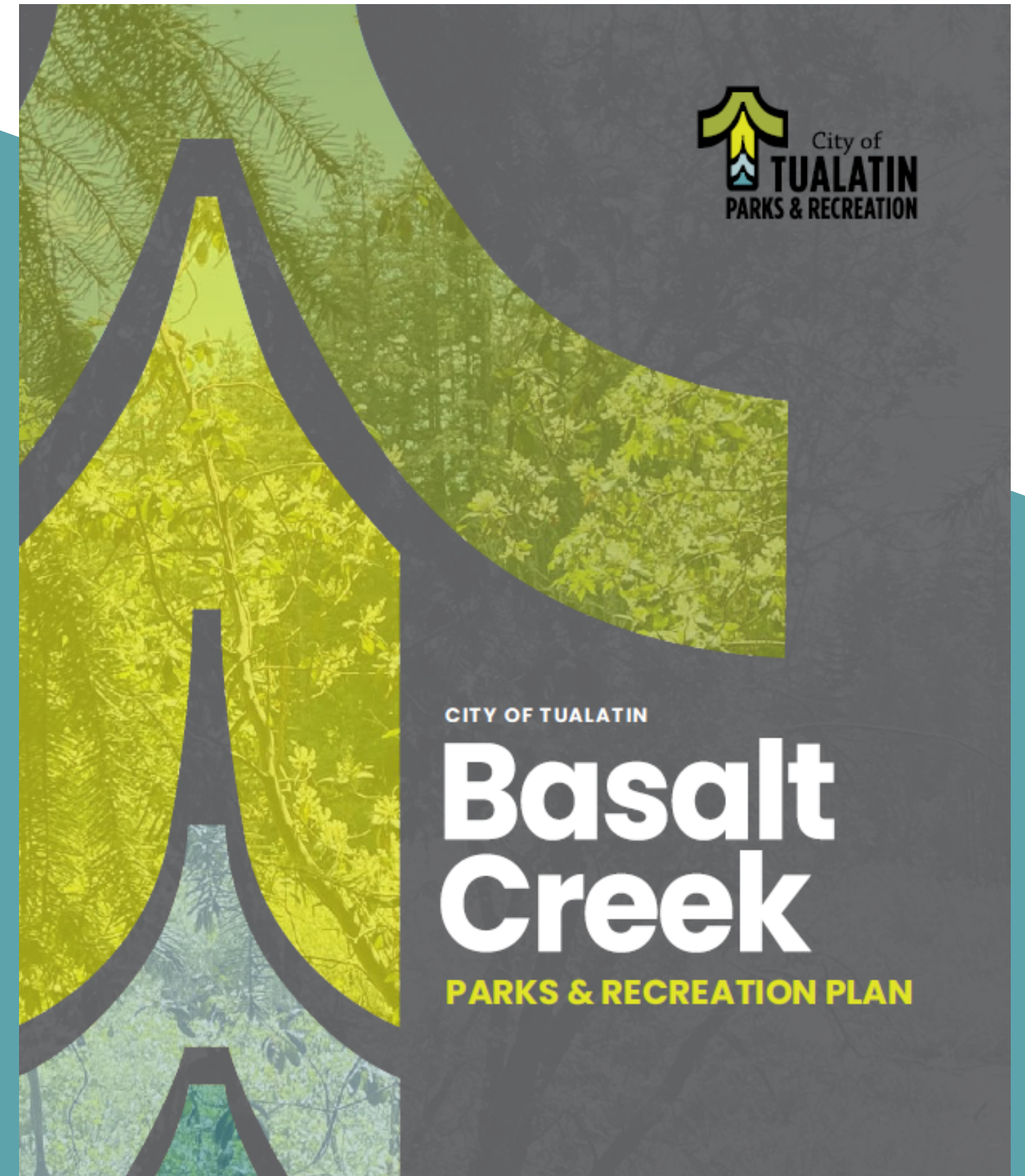
**PARKS, TRAILS & NATURAL  
AREAS UPDATE**

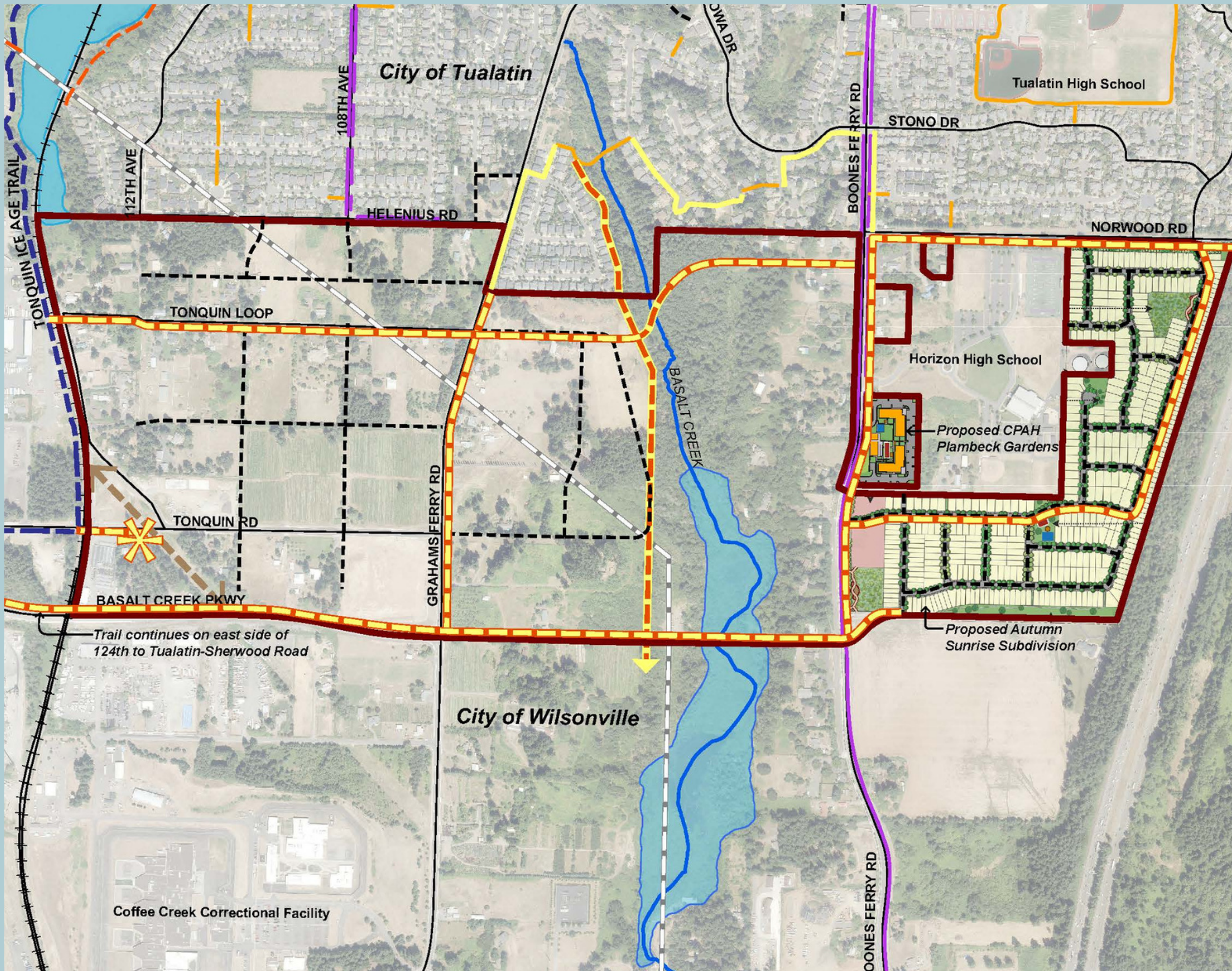
---

September 11, 2023

# BASALT CREEK PARKS & RECREATION PLAN

- Outcome of Parks & Recreation Master Plan
- Accepted January 2022
- Informs need for parkland
  - Residential & Employment
  - Parks
  - Trails
  - Natural Areas



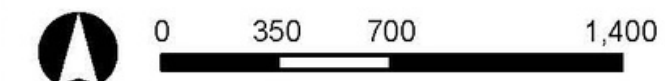


## Basalt Creek Trails Concept

### Legend

-  Basalt Creek Planning Area
-  Existing Roads
-  Proposed Roads
-  Existing Sidewalk
-  Existing Bike Lanes
-  Existing Trails
- Planned and Proposed Trails
-  Tualatin (general)
-  On-street trail/widened sidewalk
-  Off-street trail/greenway
-  Tonquin Ice Age Trail
-  Sherwood to Sandy
-  Power Line Trail
-  Proposed Trailhead
-  PGE Overhead Power Lines
-  Railroad
-  Streams
-  Waterbodies

*Note: As a result of public review of the draft plan, TPARK and Community Development planning staff have identified proposed on-street trails that may result from future development of the street system.*





# PARKLAND

## ACQUIRED

**23515 SW Boones Ferry Road**  
7.69 Acres

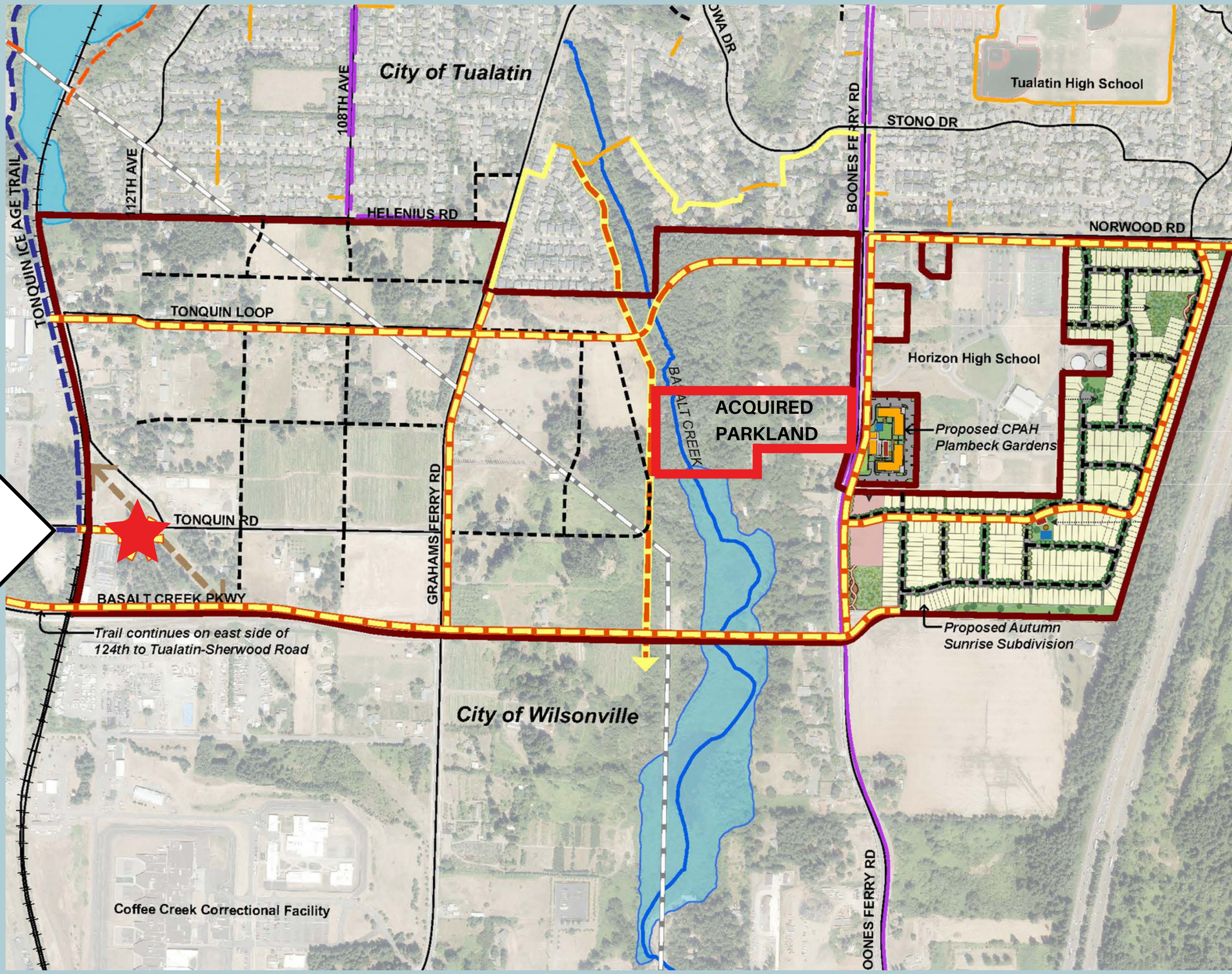
**23465 SW Boones Ferry Road**  
6.35 Acres

## PENDING

**11200 SW Tonquin Road**  
3.63 Acres



PROPERTY  
LOCATION





Ice Age Tonquin Trail  
(future)

WES  
Commuter  
Rail Line

To  
Wilsonville

SW Tonquin Rd

Site 851  
Subject  
Surplus  
Property

Sherwood to Sandy  
Powerline Trail  
(future)

SW Basalt Creek Rd

# QUESTIONS



September 11, 2023

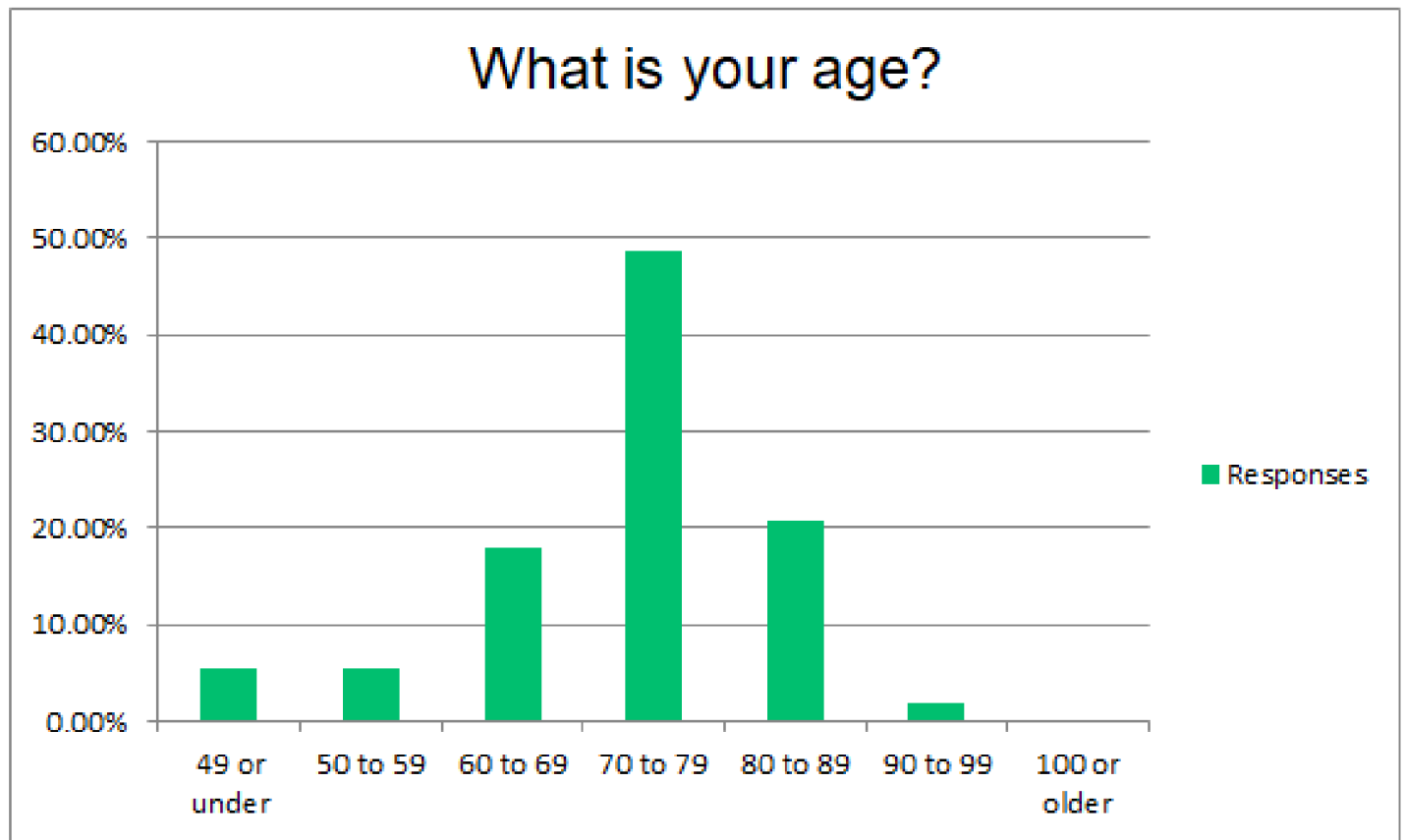


# ANNUAL SURVEY

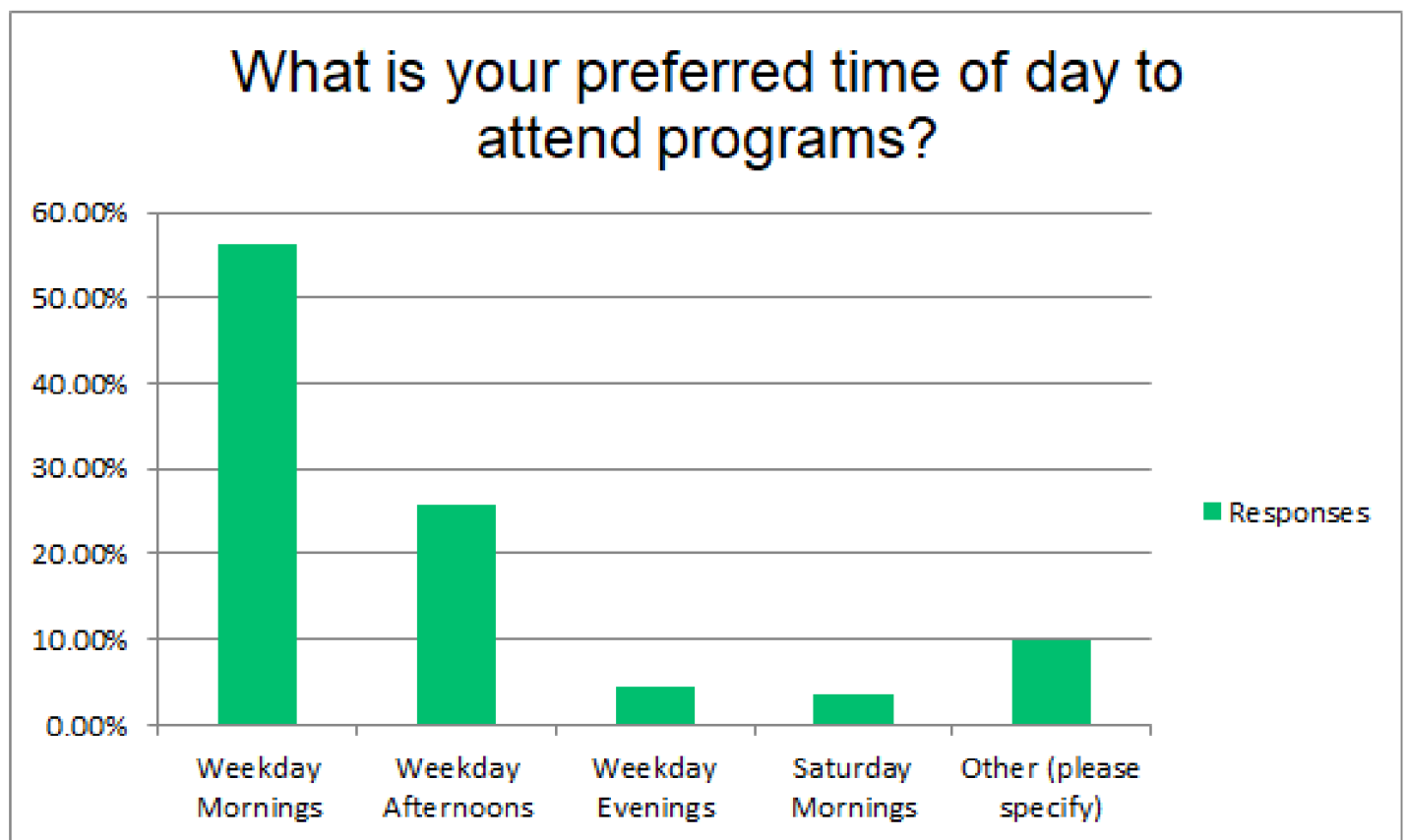
8513 SW TUALATIN RD  
TUALATIN, OR 97062  
503.691.3061

COMPILED AUGUST 2023

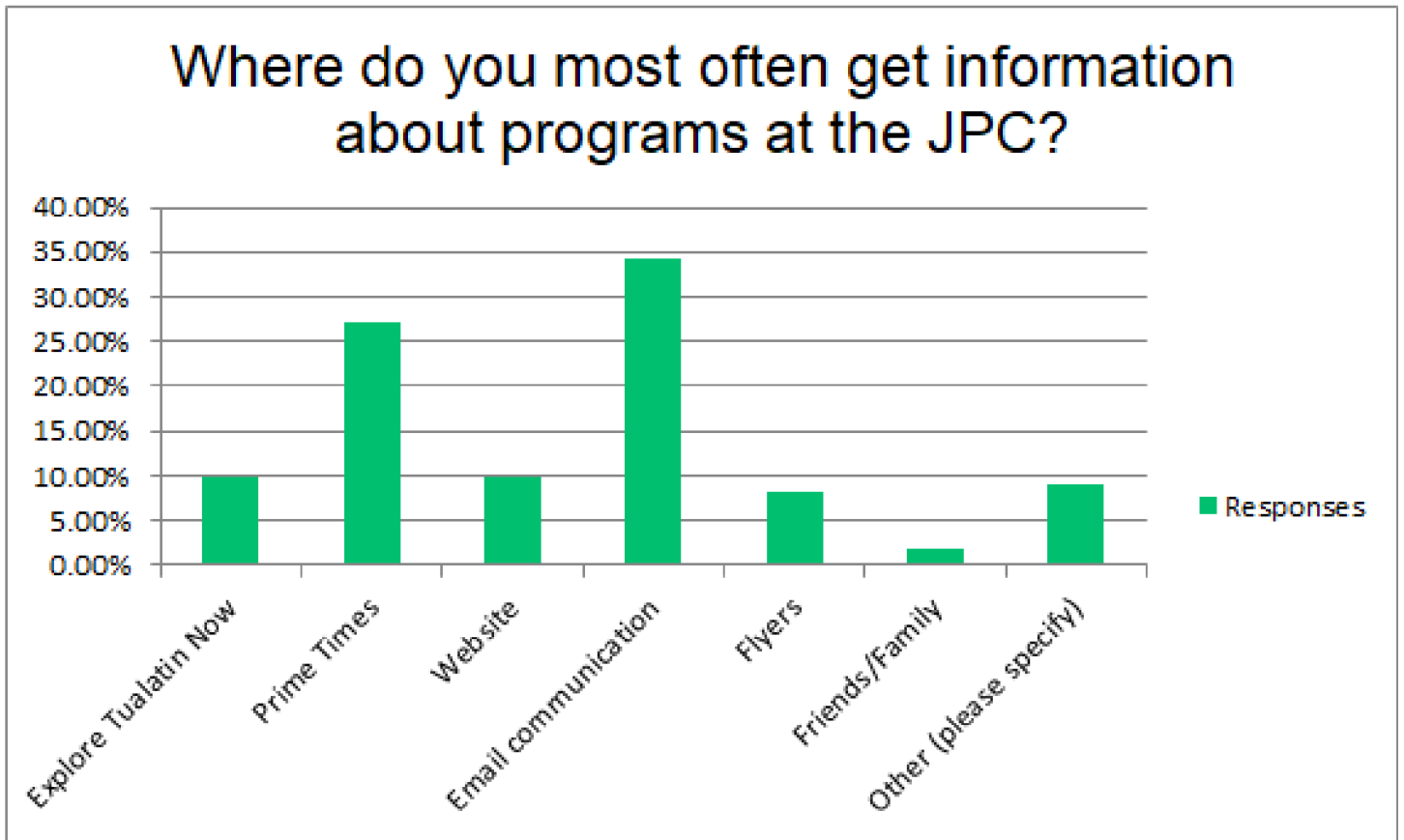
### QUESTION 1



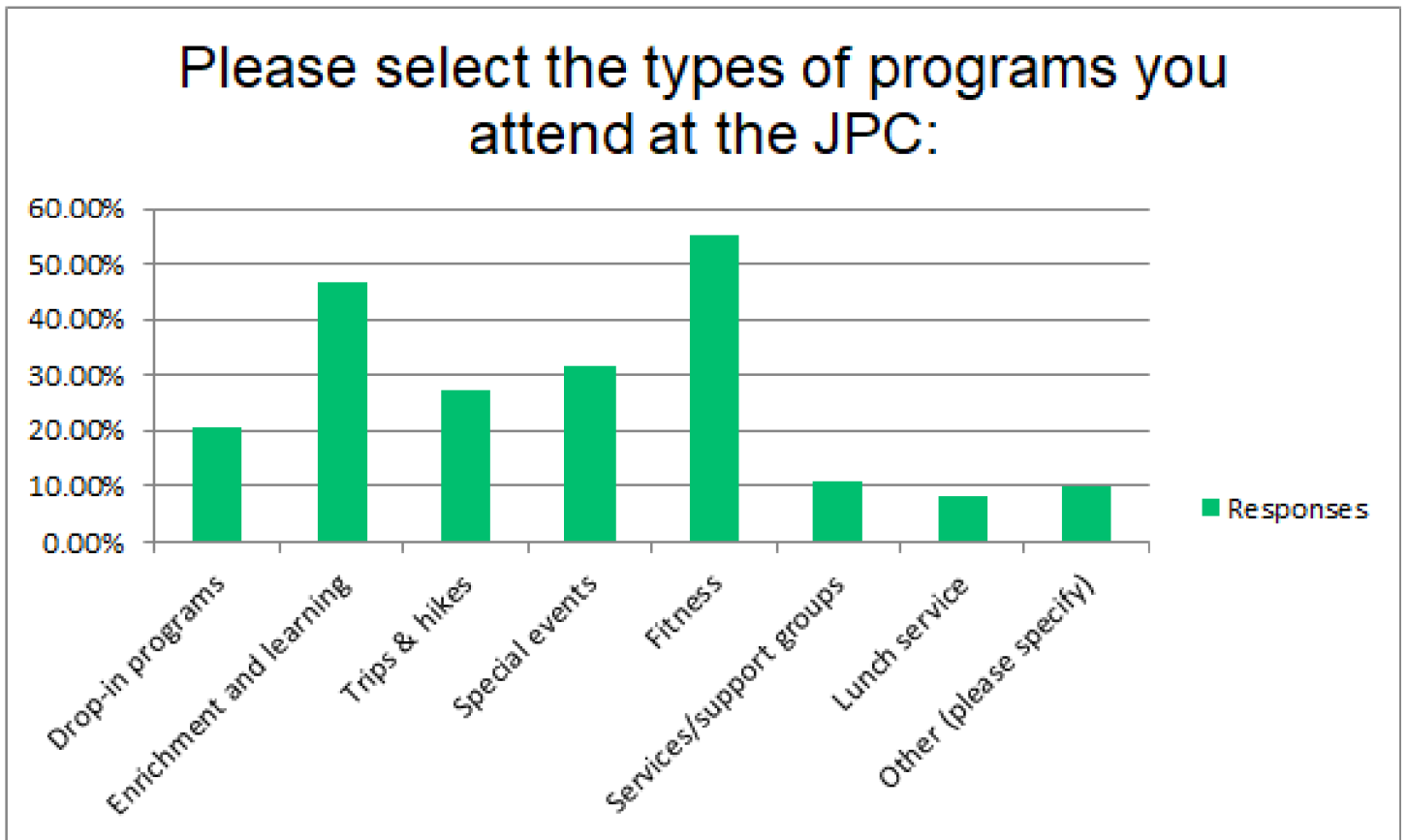
### QUESTION 2



### QUESTION 3

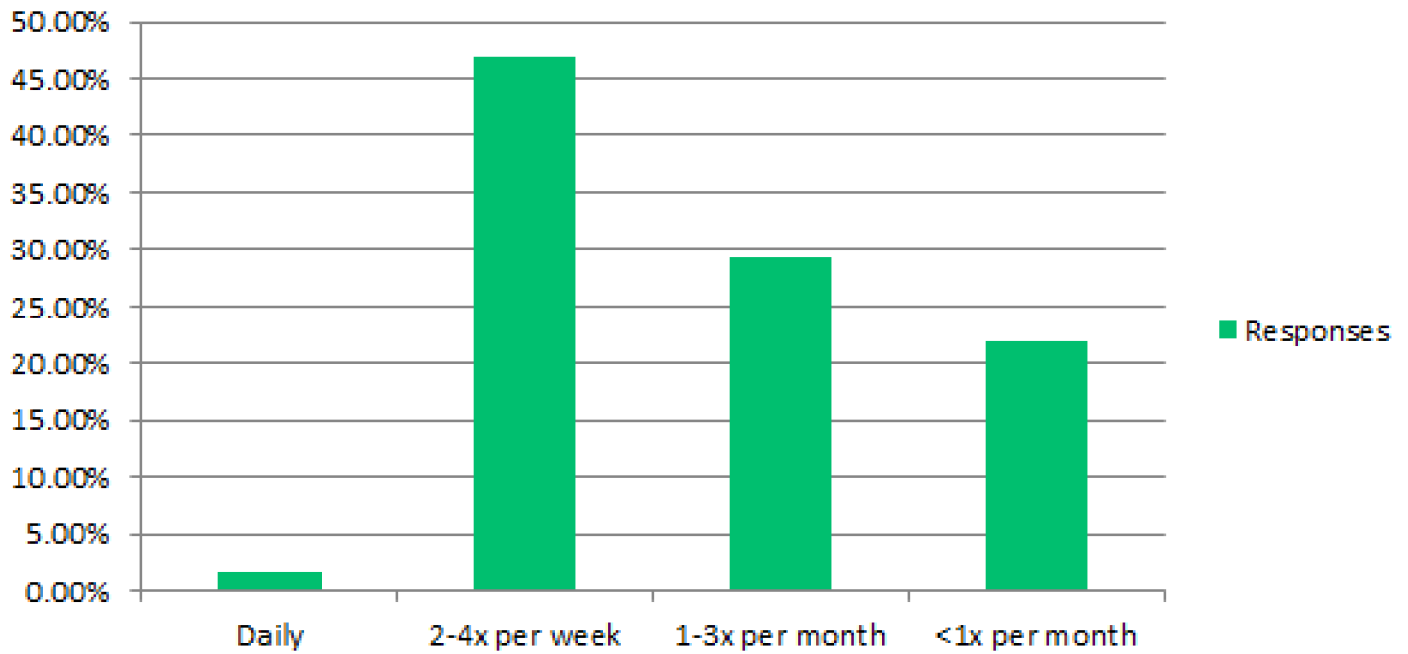


### QUESTION 4



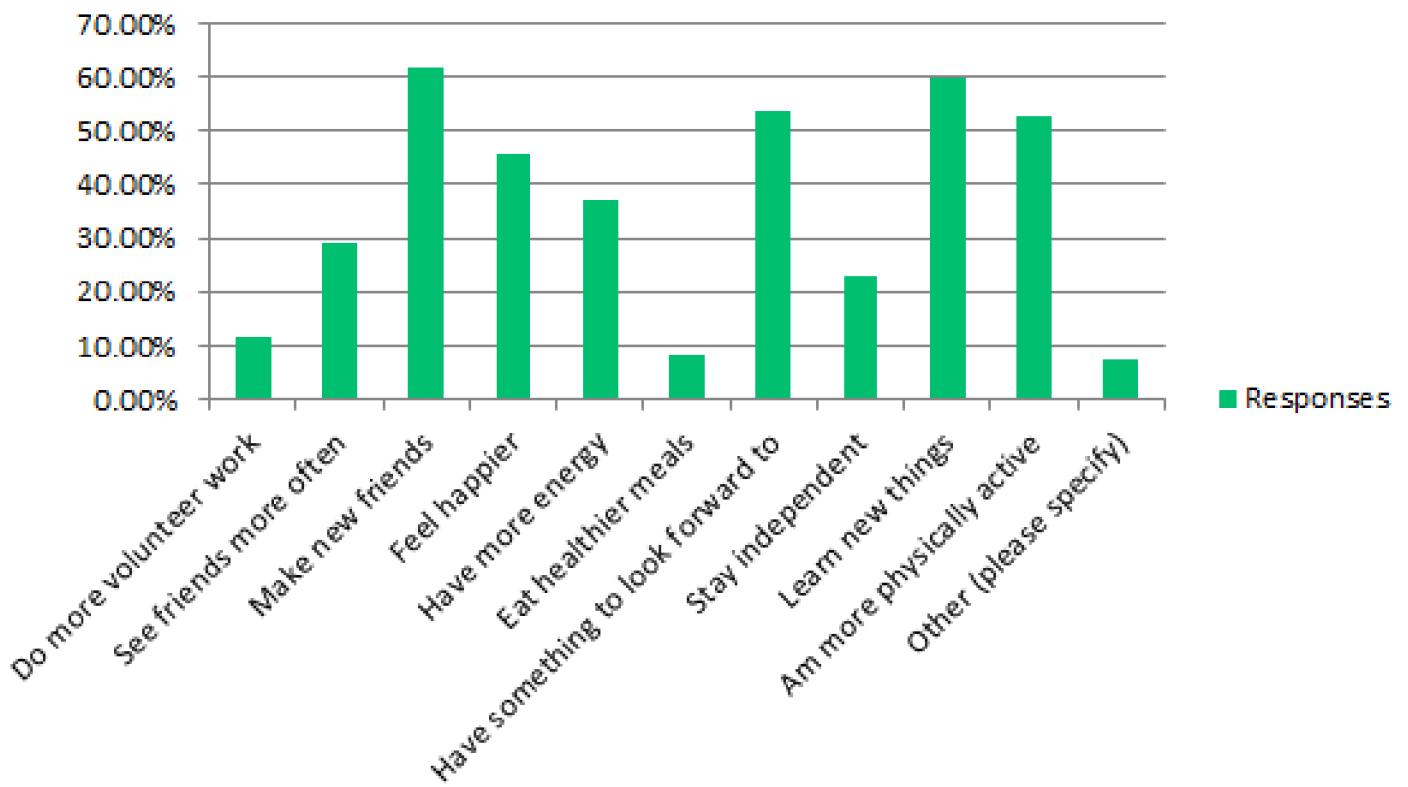
### QUESTION 5

## On average, how frequently do you attend the JPC?



### QUESTION 6

## Because I go to the JPC, I...



## QUESTION 7

### PLEASE SUGGEST ANY FITNESS/EXERCISE PROGRAMS YOU WOULD LIKE TO SEE AT THE JPC:

- Walk to cook park, walk the new paved trail that goes under the freeway on Tuesdays or Thursdays
- More yoga classes
- Chair yoga or Core strength training on Tuesdays or Thursdays
- Support groups
- Tai Chi
- I think that Barb does a marvelous job of offering programs.
- I am very happy with JPC
- Balance fair
- Folk Dance
- Zumba
- Would love swimming/exercise at the Marquis community pool.
- Can't think of any.
- Workshops on balance, and on safe stretching practices
- Something for wheelchair users
- Stretch program that would be affordable
- Hiking
- Chair exercises!
- More games like dominoes, Mexican train, cards. Because the shuttle does not run during the lunch hour it is hard to get to JP for lunch and your lunches are lovely
- Gentle yoga more than one day a week
- Light strength training
- Belly Dancing
- Wish there were more evening weekend classes. I work weekdays
- Tai Chi for old guys
- Yoga classes that are more affordable for people on Social Security
- Hand exercises, feet exercises to help with neuropathy
- Weekday morning Zumba
- Zumba Gold. More basic moves and easier. Geared towards seniors
- Qi Gong instruction, separate from tai chi
- Stretching
- Yoga para la comunidad Latina.
- More local trail/park walking groups
- Like what is currently offered
- More Tai Chi

## QUESTION 8

### PLEASE SUGGEST ANY EDUCATIONAL PROGRAMS YOU WOULD LIKE TO SEE AT THE JPC:

- Basic CPR, Basic First Aid
- Computer class
- Support groups
- Health related programs. Healthy eating plans for singles
- Birds (learning about them to enjoy watching them).
- Plant-based/vegan cooking (with demos and we get to eat what's prepared)
- Photography
- Maybe more on non-profits who offer special services - example of Housing (that was interesting for low income single women), perhaps hospice or palliative care options (Care Partners Hospice & Palliative Care is a good one), I loved the presentation on Ecuador - other no cost programs like that one are great, Scott Burns does a great job of discussing wine country an options there for wine lovers, perhaps a nice cooking class for healthy eating and simple prep (salads, salad dressings, soups, etc)
- About eyes and steps to keep diabetes under control.
- Health: heart, diabetes, fall prevention, etc.
- Best way to select medical care.
- Volunteer opportunities
- Art and writing
- Like the old quilting group, perhaps a fabric repair or practical sewing class
- Hard to say, I like the Lunch and Learn and anything that gives broad information and is not expensive. Evidence based.
- Would like to see Rob Wiedmann's presentations repeated at Pohl Center.
- Pinochle and Bridge lessons, travelers language, current events
- More free programs if possible because money is not always available to senior seniors
- More Llamas and animal therapy
- How to age well
- Gardening
- Downsizing by Move Makers
- Explain the meaning of the blood tests performed on our annual checkups; CBC, eGFR, lipid profiles, etc
- Nutrition information
- The benefit and pitfalls of a vegan diet
- Resources for seniors. How to get around when you can't drive. Tips for living your best life as a senior.
- Meditation
- Healthier living
- English classes
- More life story opportunities



## QUESTION 9

### PLEASE SUGGEST ANY HIKES/TRIPS YOU WOULD LIKE TO SEE AT THE JPC:

- Visit downtown Aurora, Troutdale, Lake Oswego, walk Tryon Park
- Easy walking tours. Mt. Hood Fruit Train. Waterfall Trolley Tour. Picnic in the park (select a Tualatin Park for a lunch and leisurely walk).
- Astronomy observatory and/or star gazing
- There are a number of nearby state parks that are always worth visiting
- Rose Garden, Rhododendron Gardens, Chinese Gardens, outside area interesting places like you offer now
- I would like to be able to take more of the trips but they seem a bit expensive even for my budget and likely out of reach for others. Aren't there some lower cost options for these? I know inflation is high but just putting in the thought for that
- Butterfly Gardens, hat place
- Trips to hot springs in the winter on weekends
- More half day hikes in the moderate range.
- Maybe have 2 tracks - easy and a moderate
- Sorry, bad knees.
- Mt. Angel Octoberfest
- The murals in The Dalles
- Forest Park, Banks trails
- I know trips cost so I'm not in a position to suggest.
- Timothy Lake hike around lake
- Silver Falls, Fruit Loop
- I don't attend these types of activities.
- Walking the river trail
- Hikes to Forest Grove.
- Concert/symphony downtown
- Tualatin refuge
- Silver Falls, Vista Adventures Balloons, Oaks Park, Portland Spirit



## QUESTION 10

### PLEASE INCLUDE ANY OTHER THOUGHTS, PROGRAM SUGGESTIONS, IMPROVEMENTS YOU'D LIKE TO SEE:

- Thank you :)
- Are there opportunities for low income folks to go on some of the trips?
- Could Conchords Chorale (Wed. PM, rent room) become a program? We might see more singers! Non-audition community chorus. I would like to know about nearby volunteer opportunities - after class.
- Prices for trips keep me from attending. Would carpooling make a difference in bringing the price down instead of taking the van? Otherwise, the center is doing a great job. Happy it is available
- Would love to see a game of hand/foot get started
- Keep up the good work!
- I'm going to be going to JPC more often in the future.
- I don't attend anything other than the line dance class as I refuse to pay an additional amount because I live in Tigard. The Tigard Senior Center doesn't offer line dancing.
- Would be pleased with anything, however it is difficult to answer these questions because other (must do) appointments get in the way of personal enrichment.

## QUESTION 10

### PLEASE INCLUDE ANY OTHER THOUGHTS, PROGRAM SUGGESTIONS, IMPROVEMENTS YOU'D LIKE TO SEE (CONTINUED):

- Baking
- Pool tournaments
- New chairs for the card and Mahjongg area would be nice.....the current covers are peeling and stick to clothes and skin.
- Support groups
- Transitioning from home to independent living
- Trivia night. A "singles" night and/or speed dating event.
- I love all that you did this year. It has been a fantastic line up. Mahjong free classes are terrific, people seem really engaged when they're there. Love the line dancing, exercise and other activities as well.
- Please try not to book events at the center when we have a regular activity going on. Some of us would like to attend something new, but would not want to abandon our regular activity and friends (i.e., cards)
- I miss the personal niceties at the center; food from the food bank, New Seasons pastries, etc., coffee available thru out the day, the popcorn popper, and the microwave. More game groups like bunco, Canasta, Yahtzee, etc
- JPC is a wonderful place with a great offering of classes and activities.
- You're doing a great job!!
- More one on one mental health service.
- Origami classes, basket weaving classes - I tried it once and enjoyed it
- More activities should be covered by medical plans. The Tualatin marquis center has a fitness room, swimming pool, swimming exercise, silver and fit, and other health classes covered by the same insurance that JPC accepts. JPC charges for anything different than the 2 exercise classes.
- Interesting speakers
- We're very impressed with the scope and variety of programs and activities provided through JPC
- I would love to see more encouragement and support for just dropping by and being able to have a cup of tea or coffee and visit, however seems like those days are gone. Also would like to see maybe a different meal plan that would not be just one time of day and is almost as expensive as going to a restaurant or thru a drive thru that you can do at you own pace and make actual decisions as to what you want to eat.
- I'm so happy that your facility is here and open to the locals. Please know that you are appreciated.
- More art classes
- Cooking classes for seniors
- The JPC needs to speak to the city about the contract with the custodial staff. The floor used for Silver Sneakers is not maintained in a safe manner. The stickiness on the floor occasionally experienced actually causes my feet to stumble. Perhaps the floor needs replaced if it can't be maintained in a safe manner.
- Sara and Marilyn at JPC are professional, helpful, kind and upbeat, both are a pleasure to deal with. Barb Blum's exercise classes are the best. Keep up the good work.
- Free or low cost socialization activities: easy craft activities, Let's Be Friends chat group, Social Interaction Games, Morning Coffee Chat Group, A senior dance, sing-alongs, senior trivia time, Name That Tune game, New Year's Eve party or other seasonal party. (Many seniors have nobody to celebrate with and are alone for holidays.) Create a volunteer hub where seniors could learn about local volunteer opportunities, Just lots of easy, casual, inexpensive opportunities for seniors to engage. The costs of some activities prevent some seniors from participating. This can't be helped, but maybe more organized, low-key activities could be planned. Everyone appreciates what the Pohl Center does for seniors. It's a very important part of the community.
- Juanita Pohl Center stands out from its metro peers as efficiently run, caring, focused on its clients, and attuned to trends of older adult wellness. > > Definitely 5 Stars
- This is all great as is! Sarah and Marilyn are the stars ★ and deserve much applause 🌟 and probably an award!!! 🏆 Thank you making JOC such a positive place!!!
- The center is doing a good job now. ::)
- More arts instruction
- I enjoy the caring and friendly staff

<b>ASSET SEQUENCING CRITERIA</b>		<b>SCORE 1-4</b>
System Balance	Increases equity, access, or geographic distribution of recreation opportunities (e.g., meets an unmet need, addresses a gap in services, serves an underserved group or area).	
Urgency/ Immediacy	Meets health and safety/regulatory elements; action must be taken now before the opportunity is lost; completion is needed before another priority project can be started.	
Ease of Implementation	Can be easily attained or accomplished; uses existing site; necessary planning, feasibility studies, and permitting have already been completed.	
Synergistic	Project provides opportunity to enhance other projects or to leverage other funds to complete.	
Environmental Sustainability	Project provides reduces impact or provides more efficient products or operations.	
Operational Sustainability	Increases sustainability, reduces costs, increases maintenance and operational efficiencies, and/or increases facility revenues.	
Scale of Benefit	Serves a greater number of people in a geographic area.	
<b>TOTAL</b>		

## **Asset Sequencing Criteria**

### **System Balance**

Increases **equity, distribution, and access**, of recreation opportunities (e.g., meets an unmet need, addresses a gap in services, serves an underserved group or area).

- 1 – Minor enhancement anticipated on balance (park with multiple shelters)
- 2 – Somewhat enhances balance
- 3 – Moderately enhances balance
- 4 – Significantly enhances balance (park underserved area with no shelter)

### **Urgency/Immediacy**

Meets **health, safety, regulatory** elements; action must be taken **now before the opportunity is lost; completion is needed before another priority** project can be started.

- 1 – Minor condition issues (slightly raised, chipped or cracked concrete on river trail)
- 2 – Fair condition
- 3 – Poor condition
- 4 – Critical condition (asphalt trail surface at TCP)

### **Ease of Implementation**

Can be easily attained or accomplished; uses existing site; necessary planning, feasibility studies, and permitting have already been completed.

- 1 – Complex (lacks design & accurate budget)
- 2 – Challenging
- 3 – Moderate
- 4 – Easy (has design & ready to proceed)

### **Synergistic**

Project provides opportunity to enhance other projects or to leverage other funds to complete.

- 1 – Low enhancement/leverage (lacks match funds, not connect to other opportunities)
- 2 – Medium enhancement/leverage
- 3 – Medium High enhancement/leverage
- 4 – High enhancement/leverage (match fund opportunities, connects adjacent projects)

### **Environmental Sustainability**

Project provides reduced impact on sustainability or provides more efficient products or operations.

- 1 – Minor impact on sustainability (Benches, Trash Cans)
- 2 – Somewhat impacts sustainability
- 3 – Moderate impact on sustainability
- 4 – Significantly impacts sustainability (LED sports field lights, smart irrigation system)

### **Operational Sustainability**

Increases **sustainability**, **reduces costs**, **increases maintenance and operational efficiencies**, and/or increases facility **revenues**.

- 1 – Minor operational impact (fence)
- 2 – Somewhat operational impact
- 3 – Moderate operational impact
- 4 – Significantly impacts operations (splash pad ongoing maintenance)

### **Scale of Benefit**

Serves a greater number of people in a geographic area.

- 1 – Neighborhood or local benefit only (Saarnen Wayside, Lafky)
- 2 – Multiple neighborhood benefits
- 3 – Community benefit
- 4 – Community/Regional wide benefit (Community Park, Commons)

# City of Tualatin Parks & Recreation Utility Fee Prioritized Assets Condition 5

NEAR TERM

MID TERM

LONG TERM

Location	Name	Location	Name	Location	Name
Stoneridge	Park Renovation	Lake	Concrete Surface & Trees	Atfalati	Sports Turf (lower)
99 boat ramp	Drainage	Lake	Brick Surface	Atfalati	Drain Behind Field
99 boat ramp	ADA Parking	Lake	Drain Grates	Commons Park	Landscape Beds
99 boat ramp	Parking Area & Bumpers	Lake	Ground Lights	Jurgens	Pavement (Asphalt Trail)
99 boat ramp	Trail Surface (Gravel)	Lake	Electrical System	Jurgens	Surface (Parking Lot)
Lake	Asphalt Surface	Lake	Irrigation System	Sweek Pond	Cedar Fencing
Lake	Rock Surface	Lake	Landscape Beds	BFRY	Parking Lot Irrigation & Landscaping
Lake	Lake Water Quality	Ltl Woodrose	Trail surface (interior)	BFRY	Community Center Parking Lot
Lake	Wood Benches & Pads	Ltl Woodrose	Fences (perimeter)	BFRY	Fishing Area
Lake	Concrete Planters/Trash Cans	Ltl Woodrose	Walkway & Railroad Tie Stairs	BFRY	Fence at entrance
Lake	Bike Racks	Tu Rvr GW	Boardwalk (behind Stonesthrow)	Ibach	Ibach Parking Lot
Lake	Drinking Fountains	Commons Park	Bench & Pad	Ibach	Drainage
TCP	Boat Ramp	Commons Park	Path Surface (Concrete)	Ibach	Bleachers
TCP	Boat Launch Parking & Drive	Commons Park	Bumper Curb (wood)	Jurgens	Fence (Swanson)
TCP	Ped Crossing at Boat Launch	Ibach	Drainage (Upper Field & Pathways)	Jurgens	Fence (Rife)
TCP	Irrigation	Jurgens	Soccer Field	Shaniko	Soft Surface Trail
TCP	Parks & Recreation Offices	Jurgens	Invasive Species	Ltl Woodrose	Park Border Wire Fence
TCP	Parking Lots & Paths (ADA)	Atfalati	Restrooms	Ltl Woodrose	Fence on Boones Ferry
TCP	Trail Surface (Asphalt)	H Wetlands	Hedges Creek Bridge	Ltl Woodrose	Log Benches
TCP	Sports Field Lights	99 boat ramp	Concrete ramp	Saum Creek	Stairways
TCP	Rustic Shelter			Saum Creek	Surface behind Venetia
Ibach	Teen Playground & wood features			Chieftain Dakota	Asphalt Path
Admin Buld	Office Ramp Accessibility			Lafky	Basketball Court
System Wide	Facility Assessment				
Jurgens	Playground & Surface				
Atfalati	Wood Playground Features				

Possible Bond Project

# City of Tualatin Parks & Recreation Utility Fee Projects

Funded		In Progress		Completed	
Location	Name	Location	Name	Location	Name
Lil Woodrose	Access & Safety Improvements	TCP	Ki-a-Kuts Bridge	Lake	Splash Pad Renovation
System Wide	School Field Renovations	TCP	Restroom renovation	Brown's Ferry	Boardwalk Replacement
Lake	Amenities Replacement	TCP	BBQ Replacemetn	THS	Stadium Lights
Vicoria Wood	Stair Renovation	Lake	Restroom renovation		
System Wide	Sign Project				

An aerial photograph of a park area. A river flows through the center, crossed by a wooden truss bridge. The surrounding landscape is filled with dense green trees, with some showing vibrant autumn colors of yellow, orange, and red. In the background, a residential neighborhood and distant hills are visible under a clear blue sky.

# PARKS CONDITION ASSESSMENT





# ASSET ASSESSMENTS

## PURPOSE

To proactively manage parks assets utilizing data collection and tracking, to plan for and direct future investment decisions.

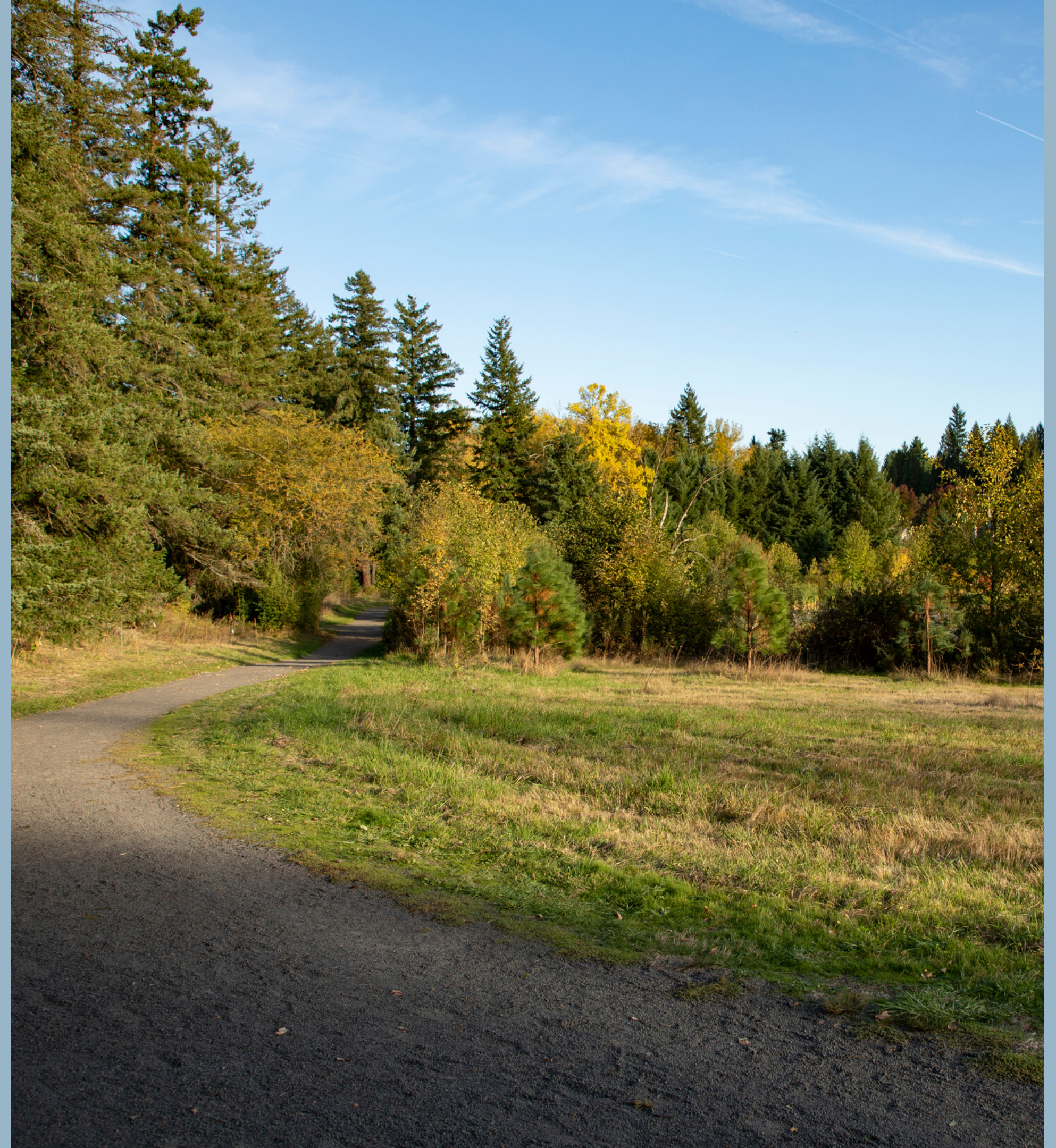
Park funding opportunities discussion to implement the master plan.

Council Advance deferred maintenance & system condition.

# WHAT

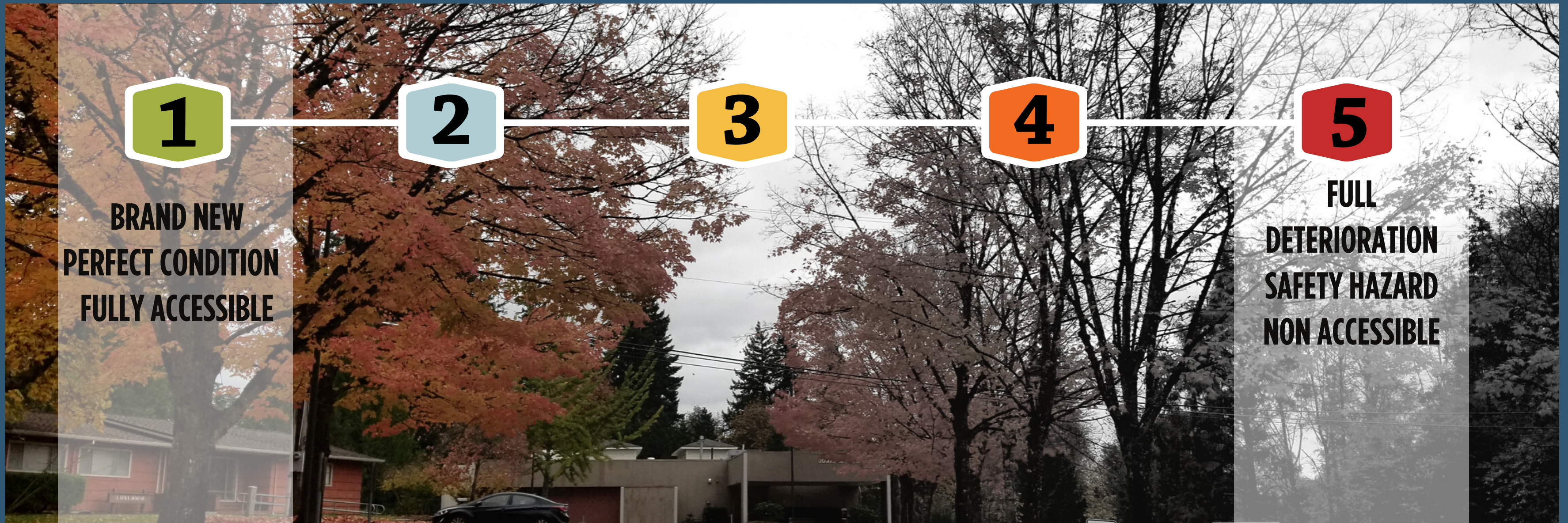
## INCLUDES:

- Strategy & Planning
- Asset Decision Making
- Life Cycle Delivery
- Asset Information
- Organization & People
- Risk & Review



# HOW

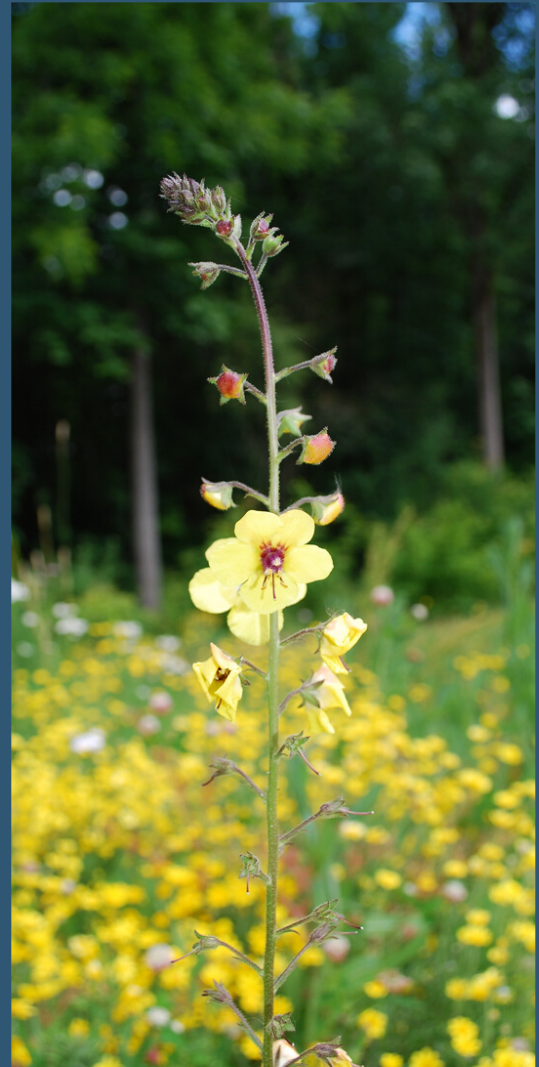
- Sustainable Service Levels
- Investment Decision Support
- Life Cycle Management
- Culture & Communications



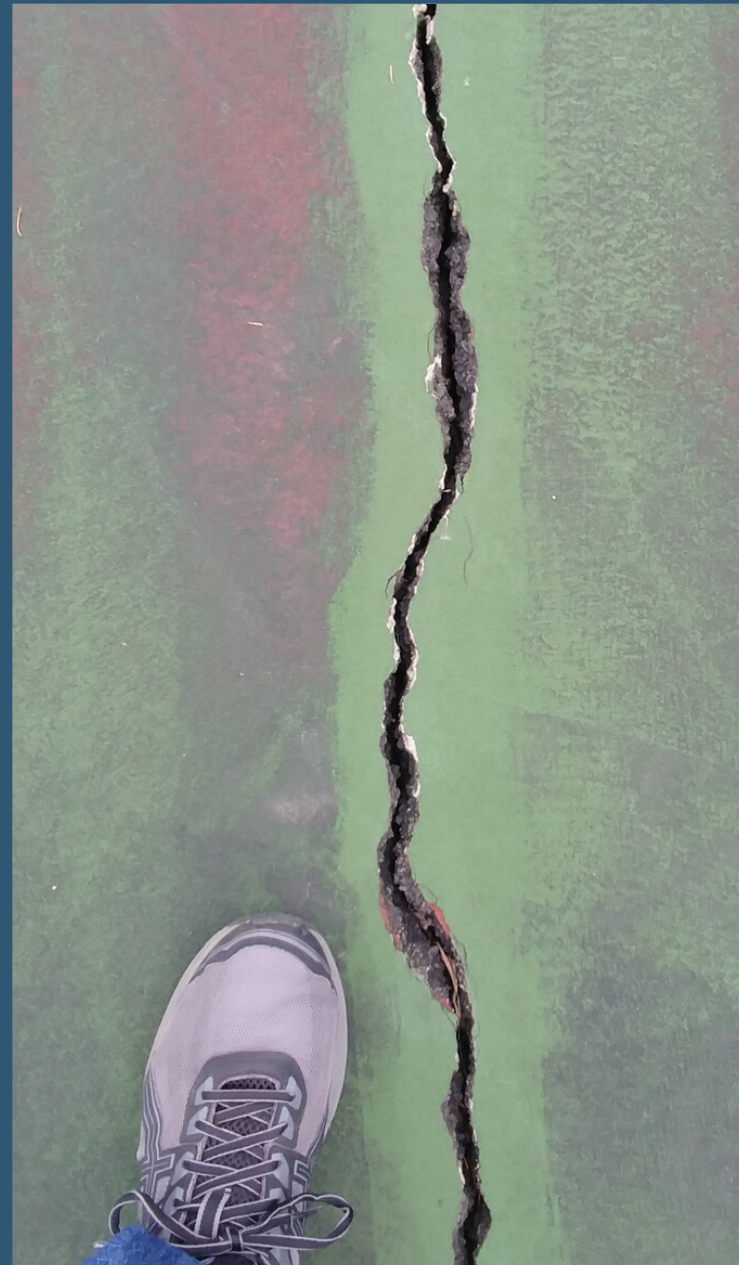
# WHY

## COUNCIL 2030 VISION

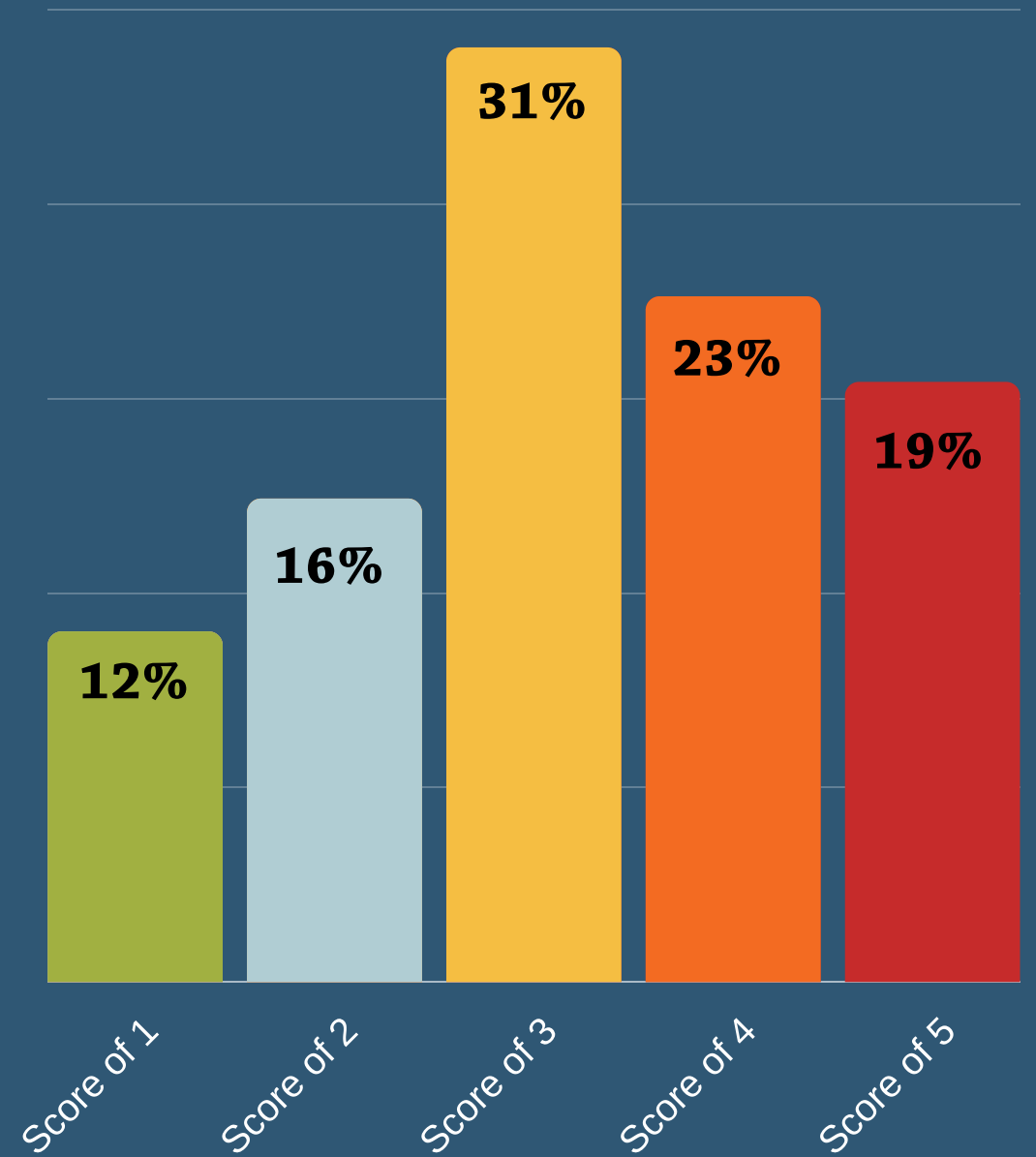
- Protect People & Environment
- Sustainability
- Equity
- Level of Service
- Accessibility
- Gathering Places



# CONDITION OF PARK SYSTEM



**739**  
ASSETS  
ASSESSED



# PARK SYSTEM ADA ASSESSMENT

26

parks, natural areas  
& greenways  
(no buildings included)

\$2,543,925 est. total

1,068 projects

\$60 to \$105,400 per project



# ATFALATI PARK

Score of 1

Score of 2

Score of 3

Score of 4

Score of 5

ADA  
ASSESSMENT  
\$336,606  
136 projects

**1** PLAYGROUND

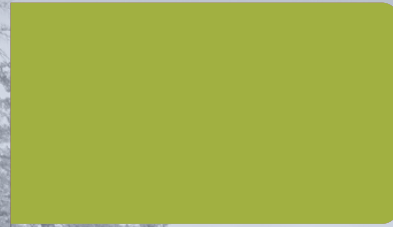
**5** BASKETBALL COURT

**5** TENNIS COURT

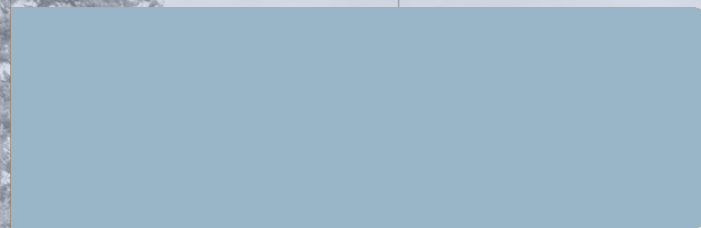


# BROWN'S FERRY

Score of 1



Score of 2



Score of 3



Score of 4



Score of 5



ADA ASSESSMENT  
\$ 117,050  
105 projects



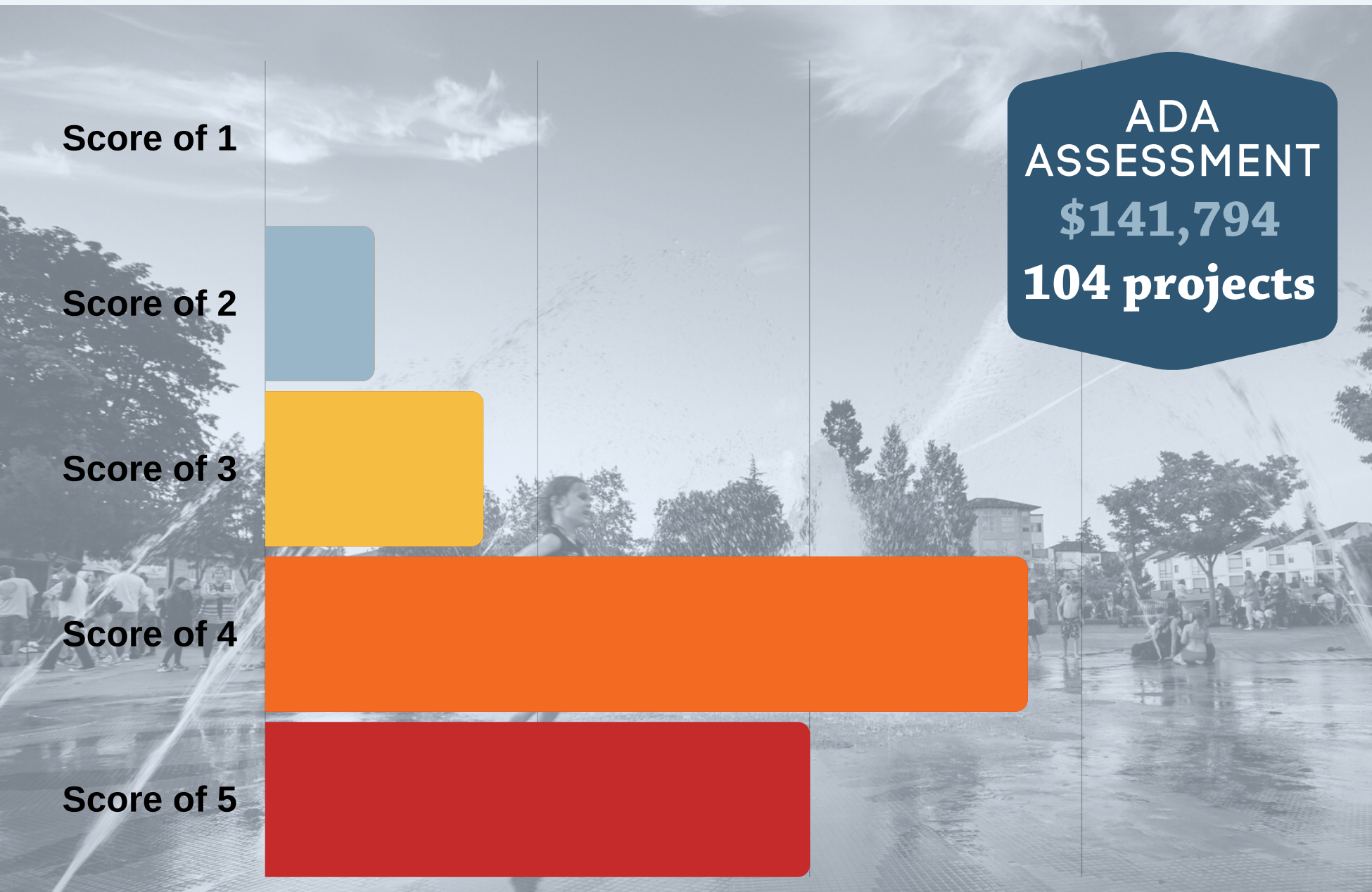
**1** DRINKING FOUNTAIN

**3** BOAT DOCK

**5** BOARDWALK BRIDGE



# TUALATIN COMMONS



**2** WAVE RAIL

**5** DRINKING FOUNTAIN

**5** FOUNTAIN SPLASH PAD

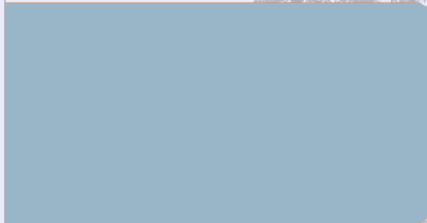


# TUALATIN COMMUNITY PARK

Score of 1



Score of 2



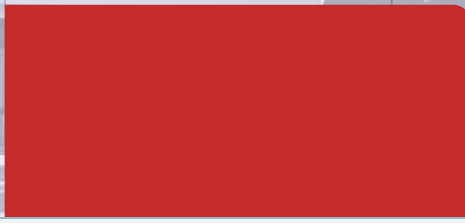
Score of 3



Score of 4



Score of 5



ADA ASSESSMENT  
\$376,744  
204 projects

**2** TRESTLE SHELTER

**5** BOAT RAMP

**5** BARBEQUE STRUCTURE

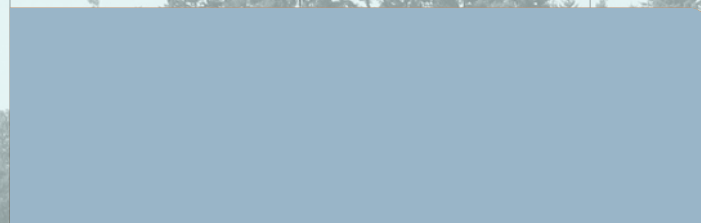


# JURGENS PARK

Score of 1



Score of 2



Score of 3



Score of 4



Score of 5



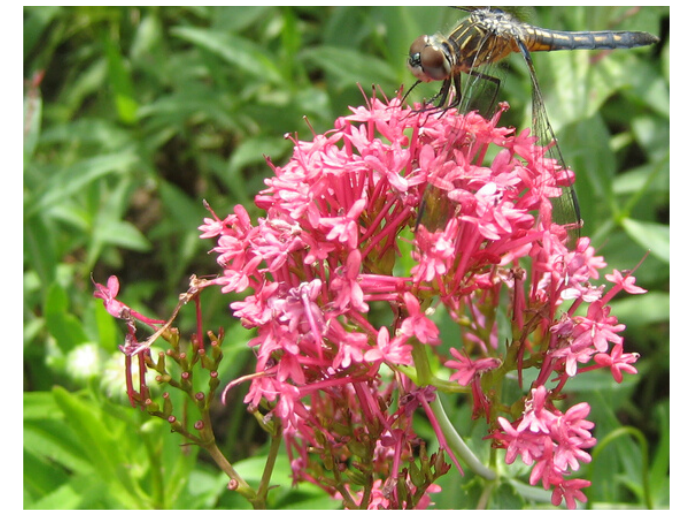
ADA  
ASSESSMENT  
\$141,412  
97 projects



OFF-LEASH AREA



FENCING  
WEST SIDE

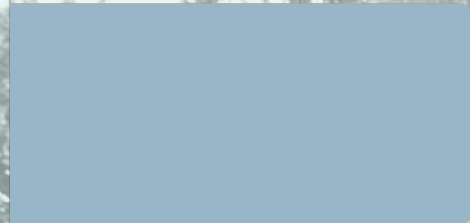


# IBACH PARK

Score of 1



Score of 2



Score of 3



Score of 4



Score of 5



ADA ASSESSMENT  
\$313,150  
171 projects

**1** PLAYGORUND

**5** PARKING LOT SURFACING





# PROCESS FORWARD

**CONTINUE ASSESSMENTS**

**COST ESTIMATES**

**PRIORITIZATION**

**FUNDING**

# QUESTIONS




# SEPTEMBER 2023



SUN	MON	TUE	WED	THU	FRI	SAT
					1	2
3	4 <b>Holiday: City Closed</b>	5 <b>Veteran's Breakfast Registration Opens</b>	6	7	8	9
10	11 <b>City Council Meeting</b>	12 <b>In Person TPARK Meeting</b>	13	14	15	16
17	18	19	20	21	22	23
24	25 <b>City Council Meeting</b>	26	27	28	29	30

# OCTOBER 2023



SUN	MON	TUE	WED	THU	FRI	SAT
1	2 <b>Active Aging Week</b> →	3	4	5	6	7
8	9 <b>City Council Meeting</b>	10 <b>TPARK Meeting : Climate Action Plan</b>	11	12	13	14
15	16	17	18	19	20	21 <b>Pumpkins &amp; Pints</b>
22 	23 <b>City Council Meeting</b>	24	25	26	27	28
29	30	31				

**Veterans Breakfast November 9**