



## MEETING NOTICE & AGENDA

### TUALATIN PARK ADVISORY COMMITTEE May 10, 2022 - 7:00 pm

#### Virtual Meeting

#### To join by phone:

+1 253 215 8782 US (Tacoma)

Meeting ID: 893 7597 7438

#### To join by video:

<https://us06web.zoom.us/j/89375977438>

---

“We are a group of enthusiastic advocates for the Parks & Recreation system with a focus on the stewardship and enhancement of our community.”

#### A. Call to Order

1. Roll Call

#### B. Approval of Minutes

1. April 12, 2022

#### C. Communications

1. Chair
2. Staff
3. Public

#### D. Old Business

1. Parks Funding
  - a. Bond Update
2. Veterans Memorial/Plaza Site Design
  - a. Virtual Open House & Survey
  - b. Preferred Design
  - c. Draft Plan
  - d. Schedule
3. Basalt Creek
  - a. Property Acquisition
  - b. Metro Local Share Application

#### E. New Business

1. Election of Officers
  - a. June 14, 2022
  - b. Committee Vacancies

- 2. Updates
  - a. Programs
  - b. Projects
  - c. Operations
  - d. Volunteers

**F. Upcoming Dates & Calendar Review**

**G. Committee Member Communications**

**H. Adjournment**



## Minutes

### Tualatin Park Advisory Committee April 12, 2022

#### Virtual Meeting

---

|                         |   |
|-------------------------|---|
| <b>Members Present:</b> | Beth Dittman, Emma Gray, Denise Cline, Michael Klein  |
| <b>Members Absent:</b>  | Brandon Gill (excused), Anthony Warren (excused)  |
| <b>Staff Present:</b>   | Rich Mueller, Parks Planning and Development Manager<br>Kyla Cesca, Office Coordinator<br>Jonathan Taylor, Economic Development Manager |
| <b>Public Present:</b>  | None  |

---

#### A. Call to Order

1. Vice Chair, Beth Dittman called the meeting to order at 6:03.

#### B. Approval of Minutes

1. The minutes of March 8, 2022 Parks & Arts Advisory Meeting were unanimously approved on a motion by Michael Klein, and second from Emma Gray.

#### C. Communication

1. Chair  
None
2. Staff  
Kyla Cesca wished everyone a happy National Volunteer Appreciation Week and thanked everyone for their volunteer service and contribution to the City. Kyla stated that Beth Dittman was recognized as an outstanding adult volunteer in 2021. Also outstanding volunteers for the parks department included Ava Marsh, a member of YAC and the Juanita Pohl Center Guest Services Team, comprised of four wonderful volunteers.
3. Public  
None

#### D. Old Business

1. Parks Funding
  - a. Tualatin Moving Forward Parks (Bond Measure Update)  
Beth Dittman shared that she, Ross Hoover and Councilor Sacco will be meeting to discuss the survey results and the next update presentation to City Council.
2. Veterans Memorial/Plaza Site Design
  - a. Virtual Open House & Survey  
Kyla Cesca shared the virtual open house website and walked members through

## Tualatin Parks Advisory Committee Meeting Minutes – April 12, 2022

each of the design concepts and then the survey. Kyla stated that there is a website in Spanish as well with the same information. Kyla encouraged TPARK members to take the survey and share with other community members.

- b. Virtual Questions & Answers Sessions  
Kyla reported that the design consultants planned up to three virtual Q&A sessions to address questions about the design concepts for the public to sign up to attend. Only one moved forward due to lack attendance indicating the designs are explained and laid out well, leaving the public with few questions.
3. Council Presentations (3/28/22)
  - a. Arbor Month  
Emma Gray shared her positive experience reporting to City Council on Arbor Month.
  - b. TPARK Annual Report  
Beth Dittman reported on the positive feedback from City Council on the TPARK annual report.
  - c. Equity & Inclusion Plan  
Beth Dittman also reported on how well the Equity and Inclusion Plan was received by City Council. Rich Mueller pointed out that the plan is included in the packet for those who are new to the group to review.
4. City Budget
  - a. Process  
Rich Mueller recapped the three different revenue accounts and budgets for parks and recreation.
  - b. Schedule  
Rich Mueller shared the public budget meeting schedule and recapped the budget process.

### **E. New Business**

1. Economic Development Prosperity Plan  
City Economic Development Manager, Jonathan Taylor described the economic prosperity plan and the need it fulfills. Jonathan added during 2000 through 2022 City Council established the Basalt Creek Urban Renewal area, which will include funding for environmental stewardship, community identity and Ice Age Tonquin Trail. This a 30 year plan and will be a process to identify projects, but not how they will happen. Jonathan stated the City is looking for interested individuals to participate in a working group to advise and offer feedback on broader community issues and potential projects that may address them. The commitment for this work would be one hour meeting on April 21, May 18, June 16, and July 21 from 5:30-7:00 pm with dinner provided. Denise Cline volunteered to represent TPARK.
2. Basalt Creek Property Acquisition  
Rich Mueller detailed the property acquisition plan and the current steps. Rich mentioned that the acquisition is contingent on the appraisal. Rich shared a map indicating where the property is located.
3. Joint Operations & Use of Sports & Athletic Fields
  - a. Memorandum of Understanding  
Rich Mueller showed the presentation that was presented to City Council. Council authorized parks to work with the Tigard Tualatin School District and the City of Tigard to create a plan for future shared field use.

## Tualatin Parks Advisory Committee Meeting Minutes – April 12, 2022

- b. Tigard-Tualatin School District & City of Tigard  
Ross Hoover and Julie Ludemann will work with these groups to refine the agreement for future use.
  - c. Process, Schedule & Next Steps  
Rich indicated the three agencies will work together on the goals of Memorandum of Understanding and then each agencies Council will review and consider an Intergovernmental Agreement for joint field scheduling and improvements.
4. Splash Pad Grand Opening  
Kyla Cesca stated that a grand re-opening celebration is scheduled for Saturday May 7 at 1 pm. It will included a brief ceremony including thank you's and project recap by the Mayor followed by the starting of the fountain. There will be free popcorn and more.
5. Updates
- a. Programs  
Kyla Cesca reported on all the programs running in April: Arbor Month and Outrun the Rain are ongoing. Juanita Pohl Center reopened to in person programs on the first of April and are working to bring back some of their treasured regular programs and new ones too. Early bird registration for Blender Dash is open and ends May 2.
  - b. Projects  
Rich Mueller shared we have not heard anything from the Tualatin Apartment developer who will be finishing the connection of the Tualatin River Greenway Trail to Brown's Ferry Park. The trail extension under 99w is in design and permitting.
  - c. Operations  
Rich Mueller shared the maintenance crew is working hard to get parks ready for the summer.
  - d. Volunteers  
Rich Mueller noted volunteer planting updates could be found in the packet.

### **F. Upcoming Dates & Calendar Review**

Beth Dittman reviewed the calendar.

### **G. Committee Member Communications**

Beth Dittman asked about the status of a youth appointment to the committee. Staff will follow up and share the information with the committee.

### **H. Adjournment**

Vice Chair Beth Dittman adjourned the meeting at 7:04 pm on a motion from Emma Gray, and second by Denise Cline.

***“We are a group of enthusiastic advocates for the Parks & Recreation system with a focus on the stewardship and enhancement of our community.”***

| Projects                    | 20M   | 30M  | 40M   |
|-----------------------------|---|--|---|
| Connected/Trails            | <p>Tualatin River Greenway<br/>Angel Haven Section<br/>Development</p> <p>Little Woodrose Improvements</p> <p>Koeller Wetland Trail</p>                     | <p>Tualatin River Greenway<br/>Angel Haven Section<br/>Development</p> <p>Little Woodrose Improvements</p> <p>Koeller Wetland Trail</p> <p>Ice Age Trail</p> <p>Acquisitions<br/>Development</p> | <p>Tualatin River Greenway<br/>Angel Haven Section<br/>Development</p> <p>Little Woodrose Improvements</p> <p>Koeller Wetland Trail</p> <p>Ice Age Trail</p> <p>Acquisitions<br/>Development</p>                                  |
| Upgrades to Existing Parks  | <p>Atfalati Park</p> <p>New Picnic Shelter<br/>Restrooms</p>  | <p>Atfalati Park</p> <p>New Picnic Shelter<br/>Restrooms</p> <p>Veterans Plaza<br/>Stoneridge Park</p> <p>Tualatin Community Park</p> <p>Redesign<br/>Conceptual Site Plan</p>                   | <p>Atfalati Park</p> <p>New Picnic Shelter<br/>Restrooms</p> <p>Veterans Plaza<br/>Stoneridge Park</p> <p>Tualatin Community Park</p> <p>Redesign<br/>Conceptual Site Plan</p> <p>Atfalati Park</p> <p>Redesign<br/>Construct</p> |
| Natural Areas/Parks         | <p>Sweek Woods</p> <p>Invasive Removal<br/>Habitat Restoration<br/>Soft Surface Trail</p> <p>Land Acquisitiior TCP</p>                                      | <p>Sweek Woods</p> <p>Invasive Removal<br/>Habitat Restoration<br/>Soft Surface Trail</p> <p>Land Acquisition TCP</p> <p>Jurgens Park Expansion</p>  | <p>Sweek Woods</p> <p>Invasive Removal<br/>Habitat Restoration<br/>Soft Surface Trail</p> <p>Land Acquisition TCP</p> <p>Jurgens Park Expansion</p>   |
| River Access                | <p>New Water Access area at TCP</p>   | <p>New Water Access area at TCP</p>  | <p>New Water Access area at TCP<br/>Plaza Promanade</p>   |
| Play Equip                  | <p>Splashpad at Ibach</p>   | <p>Splashpad</p> <p>Ibach<br/>Jurgens<br/>Atfalati</p>   | <p>Splashpad</p> <p>Ibach<br/>Jurgens<br/>Atfalati</p>  |
| Large Multi-Use Grass Areas | <p>Partnership W/ TTSD</p> <p>Field Improvements<br/>Lights<br/>Drainage<br/>Backstop<br/>Irrigation<br/>Artificial Turf</p> <p>City Field Improvements</p> | <p>Partnership W/ TTSD</p> <p>Field Improvements<br/>Lights<br/>Drainage<br/>Backstop<br/>Irrigation<br/>Artificial Turf</p> <p>City Field Improvements</p>                                      | <p>Partnership W/ TTSD</p> <p>Field Improvements<br/>Lights<br/>Drainage<br/>Backstop<br/>Irrigation<br/>Artificial Turf</p> <p>City Field Improvements</p>   |

# **TUALATIN VETERANS PLAZA**

A PLACE OF HONOR AND REFLECTION

DESIGN CONCEPT PACKAGE - MARCH 31, 2022

**SHAPIRO / DIDWAY**

# CONCEPT 1 - PLAN

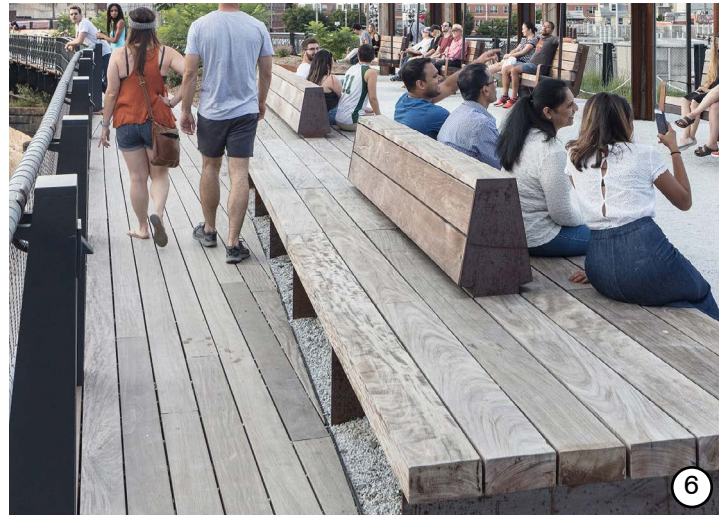
- 1. ENTRY**  
Entry area with military service inspired public art and benches.
- 2. WELCOME SIGN**  
Welcome sign with QR code to a military service educational website.
- 3. SEATING AREA**  
Bench set in landscaping with boulders.
- 4. FLEXIBLE OPEN AREA**  
Synthetic turf area for activities or gathering.
- 5. SEATING AREA**  
Seating area with tables and chairs.
- 6. DOUBLE SIDED BENCH**  
Double sided bench, one side looks out to the lake and the other side faces tables and chairs with a lake view.
- 7. PUBLIC ART WATER FOUNTAIN**  
Military service inspired public art water fountain located in the lake.
- 8. GATHERING SPACE**  
Gathering space featuring stone seat walls and ground plane labyrinth with an American flag icon in the center. Seat walls feature military branch plaques with QR codes to a military service educational website.
- 9. SEATING AREA**  
Benches form small seating area next to the main pedestrian path.
- 10. LANDSCAPE AREA**  
Landscape area with native and pollinator friendly plants.
- 11. ENTRY**  
Entry area with a central shade tree, tables and chairs along edge. Walkway features pavers with veteran names.



NTS 



# CONCEPT 1 - SUPPORTING IMAGERY



# CONCEPT 2 - PLAN

## 1. ENTRY AREA

Entry area with bench for pick up and drop off zone.

## 2. WELCOME

Walkway features welcome sign with QR code to military service educational website and walkway feature with benches overlooking lake and pavers with veteran names.

## 3. SEATING AREA

Looks out to lake with adjacent boulders.

## 4. FLEXIBLE OPEN AREA

Synthetic turf area for activities or gathering.

## 5. PUBLIC ART IN LAKE

Military service public art made from boulders, located in the lake.

## 6. SEATING AREA

Tables and chairs that look out into lake.

## 7. GATHERING SPACE

Gathering space with perimeter stepped seating and a ground plane labyrinth. Looks out to lake and includes in ground military branch plaques and an American flag plaque with QR codes that links to a military service educational websites.

## 8. PUBLIC ART IN LAKE

Military service inspired public art made from boulders in the lake.

## 9. SEATING AREA

Bench located along main circulation path, in landscaping with adjacent boulders.

## 10. LANDSCAPE AREA

Landscape area with native and pollinator friendly plants.

## 11. ENTRY

Tree lined entry with overhead lights, benches and a welcome sign with a QR code that links to a military service educational website.



# CONCEPT 2 - SUPPORTING IMAGERY



# CONCEPT 3 - PLAN

## 1. ENTRY + WELCOME SIGN

Entry with ground labyrinth inlay and benches along edge. Welcome sign with QR code to military service educational website.

## 2. PUBLIC ART

Military service inspired public art located along pathway with pedestrian lighting.

## 3. SEATING AREA

Seating area for military service education and veteran story telling circle. Military service inspired public art at entrance.

## 4. PUBLIC ART WATER FOUNTAIN

Military service inspired public art water fountain with repetitive element, located in the lake.

## 5. GATHERING AREA

Gathering area with stone bench. The central reflection pool features an American flag plaque.

## 6. PUBLIC ART WATER FOUNTAIN

Military service inspired public art fountain composed of sliced stone columns.

## 7. WALKWAY WITH MILITARY PLAQUES

Walkway with military branch plaques located on rock faces with QR codes linking to military service educational website.

## 8. SEATING AREA

Sliced stone benches around landscaping and shade trees.

## 9. FLEXIBLE OPEN AREA

Synthetic turf area for activities or gathering.

## 10. SEATING AREA

Small gathering area located in stone column element.

## 11. SEATING AREA

Tables and chairs that look out onto lake and sit next to military service inspired public art.

## 12. LANDSCAPE AREA

Landscape area with native and pollinator friendly plants.

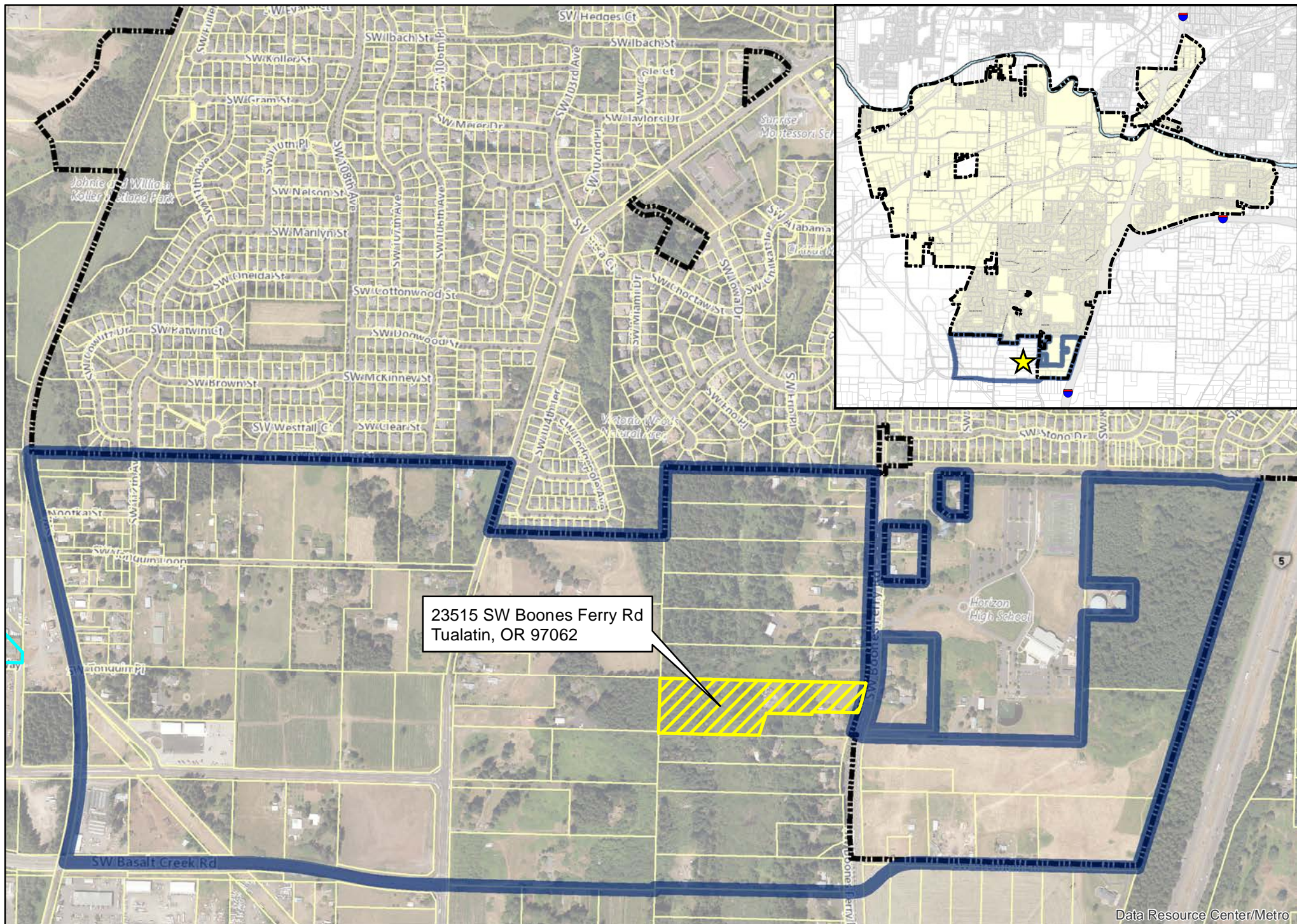
## 13. ENTRY

Entry with centrally located military service inspired public art, benches along edges and pavers with veteran names.



# CONCEPT 3 - SUPPORTING IMAGERY





23515 SW Boones Ferry Rd  
Tualatin, OR 97062



## JUANITA POHL CENTER

*"Where Active Adults Engage"*

# Earth Day Trash Pick-Up Party

APRIL 23, 2022

27 ENGAGED ENVIRONMENTALISTS





# Put Down Roots in Tualatin Brown's Ferry Park Earth Day | April 22, 2022



- 90 enthusiastic volunteers removed invasive blackberry, ivy and hawthorne from the banks of Nyberg Creek.
- Corporate groups, individuals and families attended the event and made a big impact on stream health and diversity.
- Our community partners, Friends of Trees, Tualatin Soil and Water and Tualatin Riverkeepers attended the event and contributed tools and leadership.
- Thank you to city staff: Juan Arredondo, Kelsey Parker, Miguel Gonzalez, Will Alloway and Jim Lane, for engaging volunteers and supporting forest diversity and stream health in Tualatin.







# Put Down Roots in Tualatin

## Jurgens Park

### Arbor Day | April 9, 2022



- 100 enthusiastic volunteers planted and mulched 750 native trees, shrubs and pollinator friendly flowers along the Tualatin River.
- PGE employees and PGE CEO Maria Pope assisted Mayor Bubenik in planting the annual Arbor Day tree. Friends of Trees and Tualatin Riverkeepers were our community partners. Karen Riley recited her poem “The Mother Tree.”
- Thank you to city staff: Shelley Helgerson, Miguel Gonzalez, Will Alloway, Jim Lane, Dave Koons and Tom Steiger for engaging volunteers and supporting forest diversity and stream health in Tualatin.



Thank you Mayor Bubenik for planting the annual heritage tree, an October Glory red maple. Congratulations to the City of Tualatin for celebrating 35 years of being a Tree City USA.

# MAY 2022



| SUN | MON                            | TUE   | WED | THU                                   | FRI | SAT   |
|-----|--------------------------------|---|-----|---------------------------------------|-----|---|
| 1   | 2                              | 3<br>Parks Funding Committee Meeting  | 4   | 5                                     | 6   | 7<br><ul style="list-style-type: none"><li>• Splash Pad Grand Reopening</li><li>• Outrun the Rain pick up party</li></ul> |
| 8   | 9<br>City Council Meeting      | 10<br><ul style="list-style-type: none"><li>• Parks Funding Committee Meeting</li><li>• TPARK Meeting</li></ul> | 11  | 12                                    | 13  | 14  |
| 15  | 16                             | 17<br>Parks Funding Committee Meeting   | 18  | 19                                    | 20  | 21  |
| 22  | 23<br>City Council Meeting     | 24  | 25  | 26<br>Parks Funding Committee Meeting | 27  | 28  |
| 29  | 30<br>JPC Mental Wellness Fair | 31  |     |                                       |     |   |

# JUNE 2022



| SUN | MON  | TUE                                       | WED | THU | FRI | SAT               |
|-----|--|---|-----|-----|-----|-------------------|
|     |  |   | 1   | 2   | 3   | 4<br>Blender Dash |
| 5   | 6  | 7   | 8   | 9   | 10  | 11                |
| 12  | 13<br>City Council Meeting                                     | 14<br>TPARK Meeting:<br>Officer Elections | 15  | 16  | 17  | 18                |
| 19  | 20<br><b>Holiday City<br/>Closed</b><br><br>Pollinator Weeek → | 21  | 22  | 23  | 24  | 25                |
| 26  | 27<br>City Council Meeting                                     | 28  | 29  | 30  |     |                   |