



## MEETING NOTICE & AGENDA

### TUALATIN PARK ADVISORY COMMITTEE

October 12, 2021 - 7:00 pm

#### Virtual Meeting

#### To join by phone:

+1 253 215 8782 US (Tacoma)

Meeting ID: 876 2691 1049

#### To join by video:

<https://us06web.zoom.us/j/87626911049>

---

“We are a group of enthusiastic advocates for the Parks & Recreation system with a focus on the stewardship and enhancement of our community.”

#### A. Call to Order

#### B. Approval of Minutes

1. September 14, 2021
  - a. Park Advisory Committee
  - b. Joint Park & Art Advisory Committees, Planning Commission & Youth Advisory Council

#### C. Communication

1. Chair
2. Staff
3. Public

#### D. Old Business

1. Parks Funding Update
  - a. Asset Priority Results
  - b. Asset Priority Review & Recommendation
2. Native Land and People Acknowledgment
3. Basalt Creek Parks & Recreation Plan

#### E. New Business

1. Equity & Inclusion Plan
  - a. Equity Action Items
2. Boones Ferry Road Improvements
  - a. Multi Use Paths

3. Updates

- a. Programs
- b. Projects
- c. Operations
- d. Volunteers

**F. Upcoming Dates & Calendar Review**

**G. Committee Member Communications**

**H. Adjournment**





## Minutes

### Tualatin Park Advisory Committee September 14, 2021

#### Virtual Meeting

---

<b>Members Present:</b>	Beth Dittman, Brandon Gill, Emma Gray, Josh Huffman, Anthony Warren
<b>Members Absent:</b>	Nadia Alvarado
<b>Staff Present:</b>	Ross Hoover, Parks and Recreation Director Rich Mueller, Parks Planning and Development Manager Kyla Cesca, Office Coordinator
<b>Public Present:</b>	Denise Cline

---

#### A. Call to Order

Chair Beth Dittman called the meeting to order at 7:06 pm.

#### B. Approval of Minutes

The minutes of August 10, 2021 meeting was unanimously approved on a motion by Anthony Warren, and second from Josh Huffman.

#### C. Announcements

1. Chair  
None
2. Staff  
None
3. Public  
None

#### D. Old Business

1. Basalt Creek Parks & Recreation Plan  
Rich Muller summarized the property owners open house and focus group. Invitations were mailed to 75 property owners with 25 attending. A focus group summary will be available in the report. Committee members gave feedback on the joint advisory and commission focus group meeting. Rich mentioned that TPARK will review the plan at the November meeting for consideration of a recommendation to Council.
  - Ross Hoover shared there is a wide variety of wants for this area, scale and budget will also dictate plans.
  - Anthony Warren inquired about working with developers to provide services. Ross responded we will, through SDC's or public improvements. Anthony

## Tualatin Parks Advisory Committee Meeting Minutes – September 14, 2021

followed up with sharing the City is doing a great job to engage the community.

- Denise Cline shared that she works with Friends of Trees and supports connectivity of greenspaces for walking.
- Beth Dittman suggested public engagement have bench marks with goals.

### 2. Parks Funding Update

Ross Hoover recapped the utility fee implementation process and next steps. TPARK will soon receive a list of assets scored as 5 to review for discussion and recommendation at the next meeting before it is presented to Council. This will be an annual process for accountability and assure focus on priority projects.

### 3. Acknowledgement of Native Land and People

Beth Dittman reported the work group plans to complete the final draft. Beth will soon be emailed for committee review, and presents to council in October.

## E. New Business

### 1. Programs, Operations and Projects Update

Splash Pad - Ross Hoover stated it is close to completion, but will not open this season. Rich Mueller reported landscaping is complete, the final punch list is being completed, and Washington County will inspect prior to opening.

Programs - Ross Hoover shared COVID related updates. JPC classes are now outdoors and online, the center remains open, and the Regatta has been canceled. Recreation is working on smaller activities instead, such as the holiday light parade.

Trails - Beth Dittman asked for an update on Greenway Trail boardwalk project. Rich Mueller reported builders have begun grading after receiving the permit including grading for the trail. The trail facilities improvement agreement and trail design is still in the works. Ross Hoover stated the Community Paths Grant contract will be considered by Council in October, and staff is meeting with Roamers Rest to determine design options.

Parks Equity Plan - Ross Hoover shared with the help of a consultant we hosted community engagement events for plan feedback. We are now determining specific tasks to move forward and will have a final plan this winter.

## F. Upcoming Dates

The September and October 2021 meeting and event calendars were reviewed.

## G. Committee Member Communications

Brandon Gill asked about the status of CIO's. Kyla Cesca shared they are reorganizing under new leadership.

Beth Dittman inquired about the dog waste situation near the Tualatin River Greenway Trail. Ross Hoover is in contact with the apartment management and working to find a solution.

Brandon Gill reported Maui County is phasing out all pesticide use.

Emma Gray announced an upcoming presentation from the Tualatin Sustainability network about backyard habitats.

## H. Adjournment

Chair Beth Dittman adjourned the meeting at 8:03 pm on a motion from Anthony Warren, and second by Brandon Gill.

***“We are a group of enthusiastic advocates for the Parks & Recreation system with a focus on the stewardship and enhancement of our community.”***



## MEETING MINUTES

### AJOINT MEETING OF THE TUALATIN PARK ADVISORY COMMITTEE, ARTS ADVISORY COMMITTEE, PLANNING COMMISSION, & YOUTH ADVISORY COUNCIL September 14, 2021 - 6:00 pm

#### Virtual Meeting

---

#### Members Present:

<u>Park Advisory Committee</u>	Beth Dittman, Brandon Gill, Emma Gray, Josh Huffman, Anthony Warren
<u>Art Advisory Committee</u>	Janet Steiger Carr, Mason Hall, Brett Hamilton, Dawn Upton
<u>Planning Commission</u>	Daniel Bachhuber, Ursula Kuhn, Janelle Thompson
<u>Youth Advisory Council</u>	Parker Johnson

**Council:** Councilor Bridget Brooks

**Staff Present:** Ross Hoover, Parks and Recreation Director  
Rich Mueller, Parks Planning and Development Manager  
Julie Ludemann, Recreation Manager  
Kyla Cesca, Office Coordinator

**Project Consultants:** Rachel Edmonds, MIG Project Manager  
Cindy Mendoza, MIG Director of Park and Recreation

**Public Present:** Denise Cline

---

#### A. Call to Order

Tualatin Parks Advisory Committee Chair Beth Dittman called the meeting to order at 6:04 pm and welcomed members. Beth led advisory committee members and planning commissionaires through introductions.

Ross Hoover summarized the parks and recreation planning process for Basalt Creek. Ross provided an overview of the parks planning project currently underway. He discussed the purpose of planning parks in Basalt Creek and shared the project schedule. Ross expressed the amazing opportunity to imagine the future of parks in the Basalt Creek that is expected to become part of the City of Tualatin as development occurs. He introduced the planning consultant team from MIG that included Rachel Edmonds and Cindy Mendoza.

## B. Basalt Creek Parks & Recreation Plan Focus Group

Rachel Edmonds introduced herself and Cindy Mendoza who both worked on the 2018 Parks and Recreation Master Plan for the City. Rachel explained the public engagement phase, and recapped engagement done to date. She shared the screen to show slide/board 1, having a Basalt Creek map with existing site photos. Rachel discussed the current characteristics of the area that determines parks and recreation opportunities.

The information Rachel Edmonds provided included:

- Basalt Creek runs through center of the area.
- Title 13 lands are natural areas that have environmental protections.
- Topography shown in pink is slopes 10% and over.
- Existing uses include hobby farms, orchards, industrial, and rail line.
- Ice Age Tonquin Trail is a Metro planned multi use path along west boundary.
- Points out image of canyon which is much larger than people expect.
- Tasked with creating a framework for future parks.

Rachel Edmonds shared slide/board 2 showing the concept maps and focus areas that include West focus area, Central focus area, and East focus area.

Rachel provided the following characteristics for focus areas:

- West – Manufacturing
  - Trail alignment for walking & biking
  - Connect to central focus area
- Central – Best location for a future 10-15 acre neighborhood park
  - Could have a visual connection to the creek or canyon
  - Area slated for residential and manufacturing
  - Connect to Ice Age Tonquin Trail
- East – Residential with HOA park
  - Subdivision already planned
  - Developers will provide parks facilities
  - Parks & recreation and MIG is providing guidance to developer
  - Potential partnership with Horizon High School
  - HOA will manage storm water

Project consultant Rachel Edmonds displayed slide/board 3 that shows the Tualatin Basalt Creek Park Program Preference Activity. Rachel discussed the facility elements identified as possible opportunities for each of the three focus areas, and engagement to rank importance of parkland features & amenities. Rachel then turned the meeting over to Cindy Mendoza to lead committee members and commissioners through interactive engagement.

Advisory committee members and planning commission were asked by Cindy Mendoza to share their thoughts and priorities. Below is the input, ideas and comments from committee/commission members:

- Parker Johnson (YAC)  
Attended a focus group with YAC on this topic and indicated YAC are pro trails and natural areas.
- Daniel Bachhuber (Planning Commission)  
A soccer coach, he is aware that the league wants more fields. He is interested in the demand for fields and available field space in Tualatin compared to other nearby Cities.
- Councilor Brooks

Has visited the canyon and creek/wetlands area. Waterways already have an algae problem, and fields may cause storm water runoff issues. She is concerned about the proposed bridge through wetlands, and need to be mindful of how it is managed. Supports sports fields, but they should be placed where they won't affect the environment.

- Emma Gray  
Highest priority is protecting natural resources, storm water management, trails, and native plantings. Agrees with other amenities, but larger parks create parking lots that cause issues. She mentioned consideration of pervious hardscape.
- Mason Hall  
Biggest concern is preserving the environment (safe, clean), and impacts of construction. This area needs affordable housing as well. Mentioned the need for development regulation to protect environment.
- Janet Steiger Carr  
Provided accessibility input and reminder that parks, trails and other amenities need to be ADA accessible.
- Ursula Kuhn  
Recognizes there is limited acreage available and for the city to look at the bigger picture to decide the best use for the land. Recommends keeping natural areas and leaving room for changes.
- Janelle Thompson  
Said there are many areas with steep slopes and natural areas. Sees opportunities for off street trails protected from traffic, and connections to nature
- Josh Huffman  
Would like to see level of service data on fields, natural areas and trails.
- Brandon Gill  
Supports community gardens in parklands, and the need for accessibility.
- Brett Hamilton  
Emphases on community access to natural areas and nature.
- Beth Dittman  
Suggests considering smaller areas with connectivity like Fanno Creek has. Spread out facilities into smaller separate spaces for field, play areas and gardens.
- Denise Cline  
Supports wildlife corridors and vision for connectivity to other parks and trails.
- Parker Johnson  
Mentioned King City Community Park is an example of what works to have active recreation and nature together, with recreation amenities and trail connection around the park.

Cindy Mendoza and Rachel Edmonds addressed the chat and verbal questions that included:

- The difference between HOA park and City park by explaining HOA parks small in scale for that residential development to use (not community scale use), and managed/maintained by the HOA.
- That roadway speeds will inform and take bike safety into account.
- Field space needs were address in the system wide master plan that demonstrated a field shortage issue in Tualatin. Fields come down to the amount of space available with an awareness that not all needs can be met. Additional fields may be obtained through partnerships with schools.
- This park will be small, 10-15 acres and an example is Ibach, which is 19 acres.

- It was mentioned that the area will have built in storm water facilities that can tie to wildlife habitat. Play areas can have natural and nature components, but is hard to be specific without a site determined.
- Title 13 lands will be protected in accordance with environmental requirements. Title 13 lands have three classifications (1-3) from Metro in the tri county area. The different green color shades on the map represent the three categories that have environmental development requirements and regulations.
- Trail cost vs. park costs were explained with trails usually being less cost except in natural areas where environmental challenges exist.

Ross Hoover thanked everyone for their ideas, comments and input. Ross encouraged all to take the survey on the webpage, and mentioned that the data from the master plan can be found on the Parks & Recreation website. He expressed that the community wants all the amenities, and will work to invest in public spaces to be useful for everyone. Ross mentioned that more athletic fields are needed, and is working with user groups and schools to use fields efficiently in synergy with other public spaces.

Rachel Edmonds addressed a timeline question and indicated that development on the east side will happen first, as there are current residential developments planned. Development of the area will be dependent on current property owners. A park master plan is typically a 10 to 25 year vision.

Cindy Mendoza mentioned part of the funding for parks will be through SDC funds, but depending on amenities and other costs, several funding opportunities will be need to be considered.

Rich Mueller thanked members for attending and asked committee and commission members to share the project information and link to the survey with others.

## **B. Adjournment**

Chair Beth Dittman adjourned the meeting at 7:06 pm.

## Joint Meeting Focus Group 9/14/21

### Chat Box

From Cindy Mendoza | MIG to Everyone: 06:14 PM

If you have specific questions during the presentation, please type them in chat. We will facilitate a Q&A and discussion afterwards.

From Daniel Bachhuber to Everyone: 06:21 PM

What's the difference between a HOA park and a city park?

From Daniel Bachhuber to Everyone: 06:23 PM

For the West focus area, do we know what the speed limits will be for the on-street trails? Or will the on-street trails be separated from traffic?

From Cindy Mendoza | MIG to Everyone: 06:23 PM

Park managed by homeowners associations typically are intended for use by people in the neighborhood only.

From Daniel Bachhuber to Everyone: 06:24 PM

Sorry, to clarify, the speed limits \*on the roads\* next to the on-street trails.

From Cindy Mendoza | MIG to Everyone: 06:25 PM

Bike safety will be a consideration when bike routes are identified. High speed roads should have off-street trails.

From Beth Dittman (she/her) - TPARK to Everyone: 06:27 PM

[https://www.tigard-or.gov/community/dirksen\\_park.php](https://www.tigard-or.gov/community/dirksen_park.php) This is an idea for farther down the road in planning, but, I would love to see our park additions to this area be akin to the Dirksen Nature Park that is in Tigard/Beaverton

From Ursula Kuhn, Planning Commission to Everyone: 06:30 PM

Highest priority for the area: Trails and Picnic Shelter (group gatherings)

From JSC to Everyone: 06:30 PM

Accessibility would be a key factor in any park

From Dawn Upton to Everyone: 06:31 PM

Trails, safety for bikes and pedestrians, and accessibility

From JSC to Everyone: 06:32 PM

I think we have an opportunity be accessible for all differently-abled users  
This is very important for a challenged user like myself

From Beth Dittman (she/her) - TPARK to Everyone: 06:40 PM

Connectivity of trails

From JSC to Everyone: 06:40 PM  
Sorry no internet band width

From Bridget Brooks, MSW (she/her) to Everyone: 06:40 PM  
The CPAH development is identified as truly affordable

From Denise Cline to Everyone: 06:41 PM  
Can you address the issue of wildlife  
In particular wildlife corridors.

From Bridget Brooks, MSW (she/her) to Everyone: 06:42 PM  
We are a certified Bee City USA city, just an FYI

From JSC to Everyone: 06:43 PM  
Yes we are!

From Brett Hamilton to Everyone: 06:43 PM  
What is Title 13?

From Daniel Bachhuber to Everyone: 06:44 PM  
<https://www.oregonmetro.gov/fish-and-wildlife-habitat-protection-plan>

From Brett Hamilton to Everyone: 06:48 PM  
I agree with what Janelle said

From Daniel Bachhuber to Everyone: 06:48 PM  
How does the cost of trail development compare to other recreational use of the land?

From JSC to Everyone: 06:48 PM  
I agree with Janelle as well

From Beth Dittman (she/her) - TPARK to Everyone: 06:49 PM  
I concur with the need for data to inform our decisions.

From Parker Johnson to Everyone: 06:49 PM  
^

From Bridget Brooks, MSW (she/her) to Everyone: 06:52 PM  
that's interesting, especially with historical use-(community garden)

From Brandon to Everyone: 06:55 PM  
drone fly over/through for better visualization of the area?

From Daniel Bachhuber to Everyone: 07:00 PM



Couple more cents from me:

1. It would be helpful to know on what timeline all of this might take place. 1 year? 5 years? 20 years?
2. For more of the financial framing, it would be helpful to know what would be possible with SDCs vs. with an additional bond measure.

From Bridget Brooks, MSW (she/her) to Everyone: 07:06 PM  
Thanks everybody!

From Anthony Warren to Everyone: 07:06 PM  
Thanks everyone, really great questions and conversation.



# PRIORITIZED ASSETS CONDITION



## NEAR TERM

## LONG TERM

Location	Name	Location	Name	Location	Name
Stoneridge	Fence - Chain Link	99 boat ramp	Trail Surface (Gravel)	Atfalati	Sports Turf
Stoneridge	Bench, Picnic Table & Trash cans	99 boat ramp	Concrete ramp	Commons Park	Landscape Beds
Stoneridge	Fence - Wood	Lake	Concrete Surface & Trees	Jurgens	Pavement (Asphalt Trail)
TCP	Main Shelter Restrooms	Lake	Brick Surface	Jurgens	Surface (Parking Lot)
Stoneridge	Asphalt Path	Lake	Drain Grates	Sweek Pond	Cedar Fencing
Stoneridge	Landscape	Ltl Woodrose	90th Entrance Retaining Wall, Planter Bed & Stairs	BFRY	Browns Ferry Apt Studio
Stoneridge	Turf, Irrigation, Drainage	Ltl Woodrose	Trail surface	BFRY	Browns Ferry Community Center
Stoneridge	Gravel Path & Curb	Ltl Woodrose	Fences	BFRY	BF Garage
Stoneridge	Trees	Ltl Woodrose	Walking & Railroad Tie Stairs	BFRY	Parking Lot Irrigation & Landscaping
TCP	Boat Ramp	TCP	Sports Field Lights	Ibach	Ibach Parking Lot
TCP	Boat Launch Parking & Drive	Tu Rvr GW	Boardwalk (behind Stonesthrow)	Saum Creek	Stairways
TCP	Ped Crossing at Boat Launch	99 boat ramp	Drainage	Jurgens	Fence (Swanson)
Lake	Aphalt Surface	99 boat ramp	ADA Parking	Jurgens	Fence (Rife)
Lake	Rock Surface	99 boat ramp	Parking Area & Bumpers	BFRY	Barn
Stoneridge	Park Entrance	TCP	BBQ Structure	BFRY	Community Center Parking Lot
THS Field	High School Lights	BFRY	Pedestrian Bridge	Commons Park	Bench & Pad
Lake	Lake Water Quality	Ibach	Trash Cans	Commons Park	Path Surface (Concrete)
Lake	Restrooms	Jurgens	Soccer Field	Commons Park	Bumper Curb (Wood)
Lake	Wood Benches & Pads	Lake	Drinking Fountains	Shaniko	Soft Surface Trail
Lake	Concrete Planters/Trash Cans	Lake	Ground Lights	Ltl Woodrose	Park Border Wire Fence
Lake	Bike Racks	Lake	Electrical System	Ltl Woodrose	Fence on Boones Ferry
Stoneridge	Park Lights	Lake	Irrigation System	Ltl Woodrose	Log Benches
Stoneridge	Playground	Lake	Landscape Beds	Saum Creek	Surface behind Venetia
TCP	Irrigation	TCP	Rustic Shelter		
TCP	Van Raden Community Center	TCP	Patio Shelter		
TCP	Parks & Recreation Offices	Atfalati	Restrooms		
TCP	Lafky House	BFRY	Drinking Fountain		
TCP	Parking Lots & Paths (ADA)	Ibach	Drainage (Upper Field & Pathways)		
TCP	Trail Surface (Asphalt)	Jurgens	Invasive Species		
		Sweek Pond	Hedges Creek Bridge		

<b>ASSET SEQUENCING CRITERIA</b>		<b>SCORE 1-4</b>
System Balance	Increases equity, access, or geographic distribution of recreation opportunities (e.g., meets an unmet need, addresses a gap in services, serves an underserved group or area).	
Urgency/ Immediacy	Meets health and safety/regulatory elements; action must be taken now before the opportunity is lost; completion is needed before another priority project can be started.	
Ease of Implementation	Can be easily attained or accomplished; uses existing site; necessary planning, feasibility studies, and permitting have already been completed.	
Synergistic	Project provides opportunity to enhance other projects or to leverage other funds to complete.	
Environmental Sustainability	Project provides reduces impact or provides more efficient products or operations.	
Operational Sustainability	Increases sustainability, reduces costs, increases maintenance and operational efficiencies, and/or increases facility revenues.	
Scale of Benefit	Serves a greater number of people in a geographic area.	
<b>TOTAL</b>		

## **Asset Sequencing Criteria**

### **System Balance**

Increases **equity, distribution, and access**, of recreation opportunities (e.g., meets an unmet need, addresses a gap in services, serves an underserved group or area).

- 1 – Minor enhancement anticipated on balance (park with multiple shelters)
- 2 – Somewhat enhances balance
- 3 – Moderately enhances balance
- 4 – Significantly enhances balance (park underserved area with no shelter)

### **Urgency/Immediacy**

Meets **health, safety, regulatory** elements; action must be taken **now before the opportunity is lost; completion is needed before another priority** project can be started.

- 1 – Minor condition issues (slightly raised, chipped or cracked concrete on river trail)
- 2 – Fair condition
- 3 – Poor condition
- 4 – Critical condition (asphalt trail surface at TCP)

### **Ease of Implementation**

Can be easily attained or accomplished; uses existing site; necessary planning, feasibility studies, and permitting have already been completed.

- 1 – Complex (lacks design & accurate budget)
- 2 – Challenging
- 3 – Moderate
- 4 – Easy (has design & ready to proceed)

### **Synergistic**

Project provides opportunity to enhance other projects or to leverage other funds to complete.

- 1 – Low enhancement/leverage (lacks match funds, not connect to other opportunities)
- 2 – Medium enhancement/leverage
- 3 – Medium High enhancement/leverage
- 4 – High enhancement/leverage (match fund opportunities, connects adjacent projects)

### **Environmental Sustainability**

Project provides reduced impact on sustainability or provides more efficient products or operations.

- 1 – Minor impact on sustainability (Benches, Trash Cans)
- 2 – Somewhat impacts sustainability
- 3 – Moderate impact on sustainability
- 4 – Significantly impacts sustainability (LED sports field lights, smart irrigation system)

### **Operational Sustainability**

Increases **sustainability**, **reduces costs**, **increases maintenance and operational efficiencies**, and/or increases facility **revenues**.

- 1 – Minor operational impact (fence)
- 2 – Somewhat operational impact
- 3 – Moderate operational impact
- 4 – Significantly impacts operations (splash pad ongoing maintenance)

### **Scale of Benefit**

Serves a greater number of people in a geographic area.

- 1 – Neighborhood or local benefit only (Saarnen Wayside, Lafky)
- 2 – Multiple neighborhood benefits
- 3 – Community benefit
- 4 – Community/Regional wide benefit (Community Park, Commons)

## **Acknowledgement Statement**

As we gather in community, we welcome everyone here with open hearts and minds and offer gratitude for the land itself and our opportunity to be here today. Let us pause to acknowledge our presence on the unceded homelands and waters of the Atfalati (“at-fall-uh-tee”) Kalapuyans (“cal-uh-poo-yuns”) who are, today, represented by the Confederated Tribes of the Grand Ronde *and the Confederated Tribes of the Siletz*. These original stewards of this place modeled sustainable practices and interdependent relationships with the land and other beings. It is our duty to acknowledge the generational impacts of colonialism, forced displacement, assimilation, disease, and violence on Native American families. We honor past, present, and future Indigenous members of the Tualatin community, recognizing that these First Peoples are still here and connected to this land.

This statement has been submitted for review and approval by the Confederated Tribes of the Grande Rond and the Confederated Tribes of the Siletz on **DATE**.

## **Statement of Purpose**

This acknowledgement of native land and people was created intentionally and deliberately by representatives in the City of Tualatin from the City Council, City Manager's Office, Parks and Recreation Committee, Arts Advisory Committee, Youth Advisory Committee, and Library Committee; and, with guidance from the City of Tualatin Diversity Task Force, Washington County Office of Community Engagement, and the Confederated Tribes of the Grand Ronde.

This acknowledgement is a first step in recognizing and sharing the honest history of how the land in the city of Tualatin was acquired. The land on which Tualatin is situated was obtained via unjust means including the 1850 Oregon Land Donation Claim Act, unratified treaties of 1851 and 1854, and the Dawes Act in 1887.

This acknowledgement seeks to respect and witness members of our community: past, present, and future, who have been and who will continue to be impacted by colonialism. By sharing this acknowledgement, we break the previous silence that perpetuated our complicity in systems of oppression.

This acknowledgement is intended to be both a foundation for building relationships within our community as well as a catalyst for continued truth telling, critical thinking, and dialogue by our community members.

**Guidelines for Use** *pulled from Willamette University website - request submitted for permission*

In making the acknowledgment, please do or remember the following:

1. An Acknowledgement of Native Land and People is a respectful public recognition of the Indigenous history of the land.
2. An Acknowledgement of Native Land and People is given by the host or facilitator of an event or gathering unless a specific person has been requested to share the Acknowledgement.
3. The Acknowledgement of Native Land and People is given regardless of whether Indigenous individuals are present.
4. Do not assume that giving an Acknowledgement of Native Land and People is the role of Indigenous folks present. However, if a representative from the tribes is present and will offer "welcome to the land" remarks for an event, the host or facilitator is still welcome to offer the Land Acknowledgement, but it is not necessary.
5. The person giving the Acknowledgement of Native Land and People should practice reading the statement so that it flows effortlessly and ask for help with any pronunciation concerns.

The Acknowledgement of Native Land and People may be used by anyone wishing to share it at the start of their event and is intended to be:

- Read at the beginning of all public meetings
- Read at the beginning of all community events
- Shared openly and publicly on our city website
- Accompanied on the city website by other educational materials and, ultimately, accountable actions being taken to reconcile our past and move forward together



## References

The World of the Kalapuya: A Native People of Western Oregon (Juntunen, Dasch, & Rogers)

<https://ijist.com/featured/acknowledging-indigenous-people/>

<https://usdac.us/nativeland/>

<https://nativegov.org/a-guide-to-indigenous-land-acknowledgment/>

<https://ndnhistoryresearch.com/tribal-regions/kalapuyan-ethnohistory/>

<https://libraryguides.lanec.edu/kalapuya>

<https://www.nps.gov/articles/000/dawes-act.htm>

[https://sos.oregon.gov/archives/Pages/records/aids-land\\_federal.aspx](https://sos.oregon.gov/archives/Pages/records/aids-land_federal.aspx)

<https://willamette.edu/offices/native-american/land-acknowledgement/index.html>

<https://www.csmiller.co/equity-acknowledgement>

<https://cals.cornell.edu/american-indian-indigenous-studies/about/land-acknowledgment>

<https://www.portlandpf.org/land-acknowledgement>

<https://www.edenprairie.org/city-government/commissions/human-rights-and-diversity-commission/land-acknowledgment-statement>

<https://ourchildrenoregon.org/our-children-oregons-land-acknowledgement-statement/>

<https://www.uvicnsu.ca/about/lands>

<https://www.ci.northfield.mn.us/1403/Land-Acknowledgement-Statement#:~:text=The%20City%20of%20Northfield%20adopted,ngoing%20contributions%20to%20this%20region>

<http://www.colorado.edu/cuub/cuub-university>

<https://www.pcc.edu/diversity-councils/cascade/>

<https://wsu.edu/about/wsu-land-acknowledgement/>

[uwkc.org/land-acknowledgement](http://uwkc.org/land-acknowledgement)

<https://manoa.hawaii.edu/nhpol/language-option/pathways/auamo/>

# Basalt Creek Parks & Recreation Plan Community Engagement

Updated 10/5/21

## **COMMUNITY EVENT**

### **Viva Tualatin**

**Date:** August 28, 2021

**Time:** 3-6 pm

**Location:** Tualatin Community Park, 8515 SW Tualatin Road

## **OPEN HOUSE**

**Neighborhoods & Property Owners** (focus group & open house)

**Date:** September 9, 2021

**Time:** 6 pm

**Location:** Ibach Park, 10455 SW Ibach Street

**PUBLIC MEETINGS** – Agendas & Packet at <https://www.tualatinoregon.gov/meetings>

**Joint Meeting of Tualatin Park Advisory Committee, Arts Advisory Committee, Planning Commission, & Youth Advisory Council**

**Date:** September 14, 2021

**Time:** 6 pm

**Location:** Virtual

### **Park Advisory Committee**

**Dates:** May 11, June 8, July 13, August 10, September 14, October 12, November 9, December 14, 2021

**Time:** 6 pm

**Location:** Virtual

### **City Council**

**Date:** July 26, 2021 & January 10, 2022

**Time:** 7 pm

**Location:** Virtual

### **Basalt Creek Informational Webinar**

**Date:** May 17, 2021

**Time:** 12 pm

## **SURVEY'S**

**Survey #1 – Basalt Creek Park Planning Pop Quiz**

**Dates:** July 8 – August 13, 2021

**Survey #2 – Tualatin Basalt Creek Parks Planning**

**Dates:** August 31 – October 1, 2021

**Survey #3 – Basalt Creek Parks & Recreation Draft Plan**

**Dates:** November 12 – December 3, 2021

**FOCUS GROUPS**

**Youth Advisory Council**

**Date:** August 19, 2021

**Neighborhood & Property Owners (focus group & open house)**

**Date:** September 9, 2021

**Time:** 6 pm

**Location:** Ibach Park, 10455 SW Ibach Street

**Joint Meeting of Tualatin Park Advisory Committee, Arts Advisory Committee, Planning Commission, & Youth Advisory Council - <https://www.tualatinoregon.gov/meetings>**

**Date:** September 14, 2021

**Time:** 6 pm

**Location:** Virtual

**Business & Employment**

**Date:** October 5, 2021

**Time:** 3 pm

**Location:** Virtual

**INTERNAL MEETINGS**

**Tualatin & Wilsonville City Staff**

**Dates:** July 22, August 23, 2021

**Metro**

**Dates:** July 22, August 17/18, September 8, 2021

**Chamber of Commerce**

**Date:** July 26, 2021

**Lennar Homes**

Tualatin & Lennar Homes

**Date:** August 11, 2021

**Community Partners for Affordable Housing**

**Date:** August 31, 2021

**Tualatin, Wilsonville & WA County**

**Date:** October 5, 2021

**City Departments & Staff**

Park Maintenance Division – September 8, 2021

Community Development – March 15, April 8, May 17, June 15, July 19, August 10, 30, 2021

**Onsite Visits**

March 12, May 10, 2021





Scan this QR code with your smartphone to go to the project website.  
Escanee este código QR con su teléfono inteligente para ir al sitio web del proyecto.



# WELCOME BIENVENIDOS

## About Basalt Creek

- Metro added Basalt Creek to the urban growth boundary
- This area will become part of Tualatin through voluntary annexation
- Wilsonville will also expand along its northern boundary
- With community input, both cities have created a plan for future expansion, including new park resources

The exciting process of planning for parks and recreation in Basalt Creek kicked off in the spring of 2021!

## What is currently underway?

- Identify potential future park and trail concepts
- Project web page with FAQs, schedule, and engagement opportunities
- Potential residential on east side
- Affordable housing development concept

## Acerca de Basalt Creek

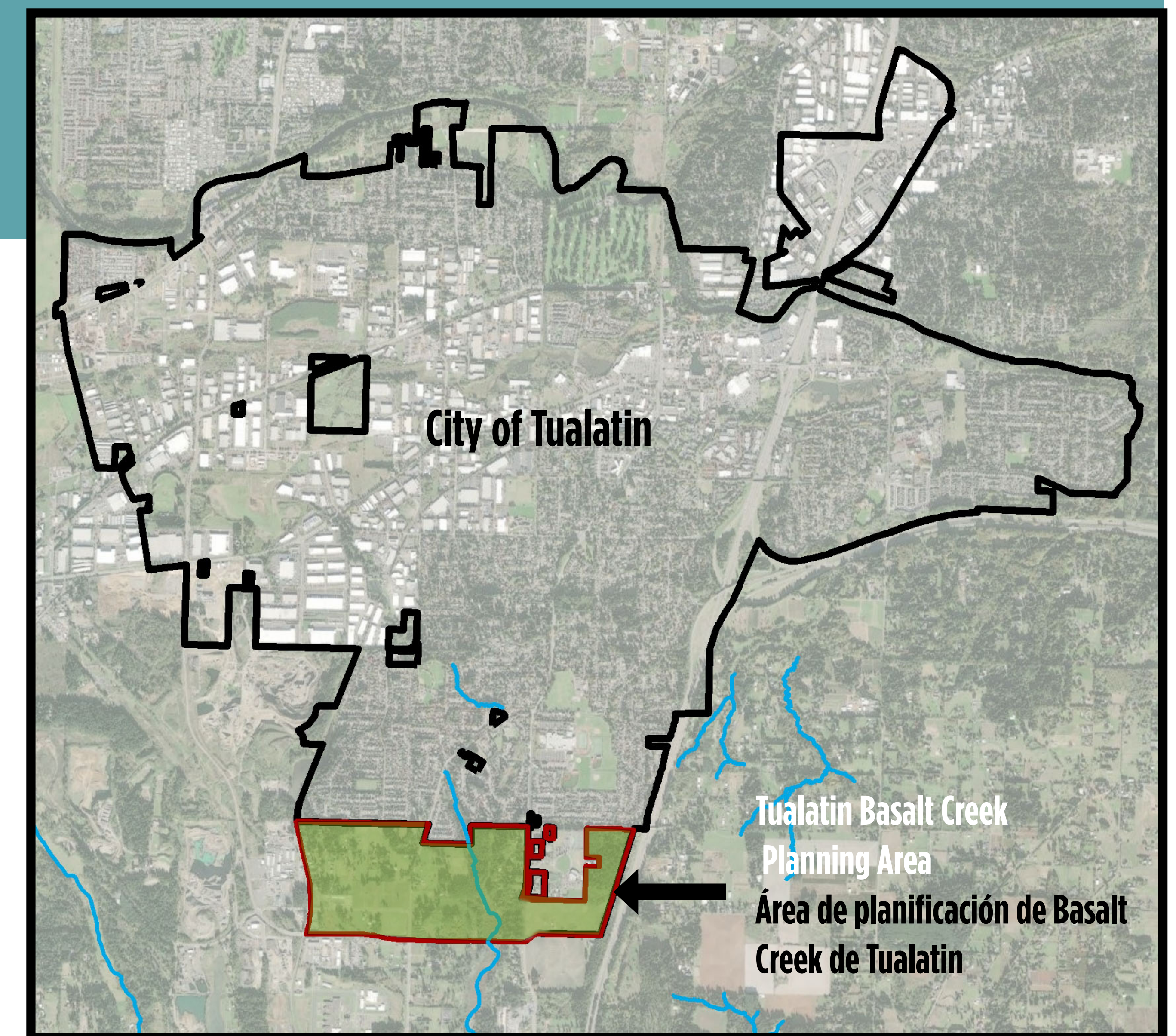
- Metro agregó Basalt Creek al límite de crecimiento urbano
- Esta área pasará a formar parte de Tualatin a través de la anexión voluntaria
- Wilsonville también se expandirá a lo largo de su límite norte
- Con la opinión de la comunidad, ambas ciudades han creado un plan para la expansión futura, que incluye nuevos recursos del parque

¡El emocionante proceso de planificación de parques y recreación en Basalt Creek comenzó en la primavera de 2021!

## ¿Qué está actualmente en marcha?

- Identificar posibles conceptos futuros de parques y senderos
- Una página web del proyecto con preguntas frecuentes, programación y oportunidades de participación
- Área potencial residencial en el lado este
- Concepto de desarrollo de vivienda asequible

## Location map Mapa del lugar



## Project Schedule Calendario del proyecto





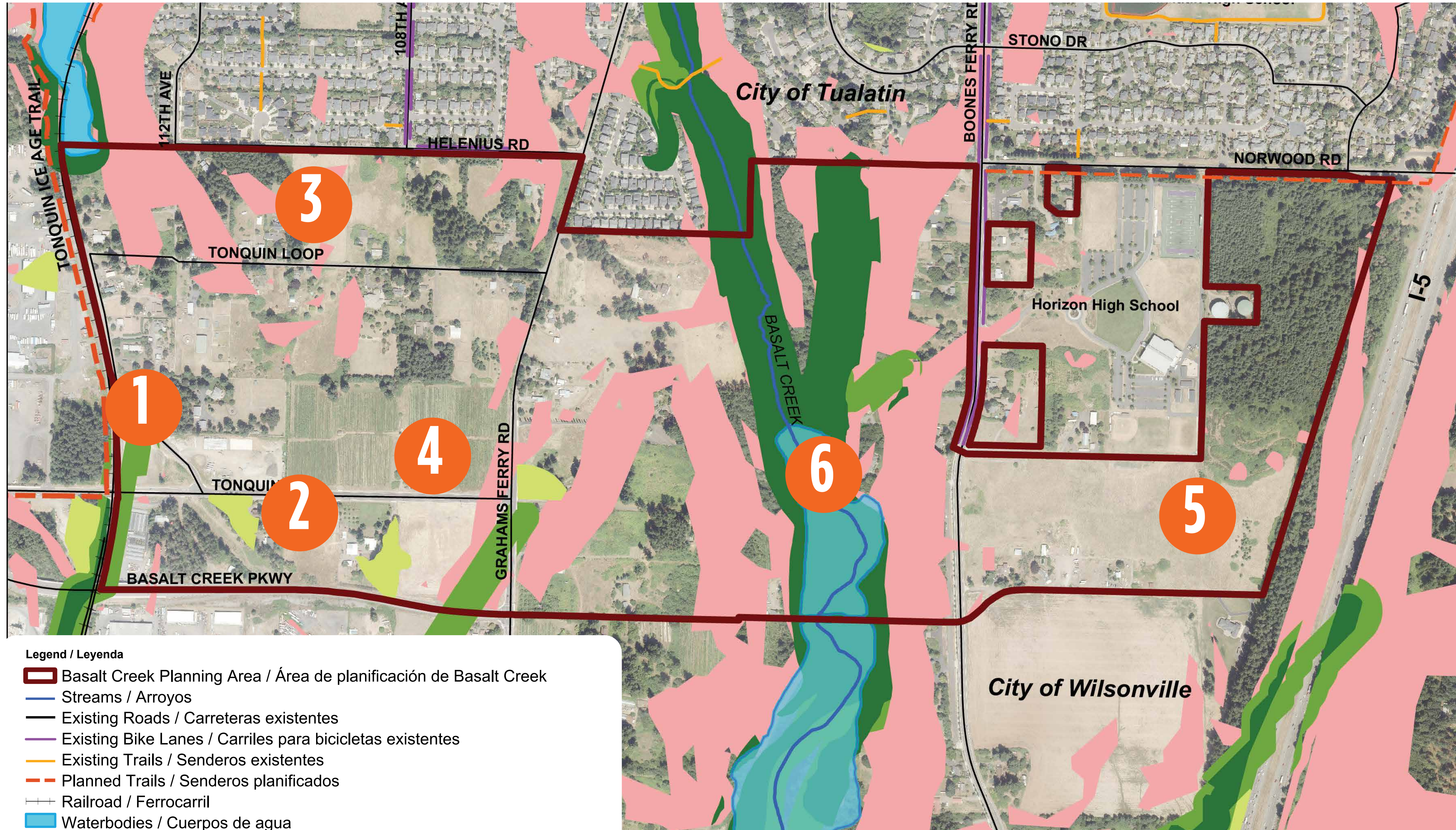


Scan this QR code with your smartphone to go to the project website.  
Escanee este código QR con su teléfono inteligente para ir al sitio web del proyecto.



# AREA MAP & EXISTING SITE PHOTOS

## MAPA DEL ÁREA Y FOTOS DEL SITIO ACTUAL



**1** Potential Regional Trailhead  
Posible comienzo del sendero regional



**2** Potential On Road Trail Character  
Potencial del carácter del sendero en el camino



**3** Character of Future Residential Areas  
Carácter de las futuras áreas residenciales



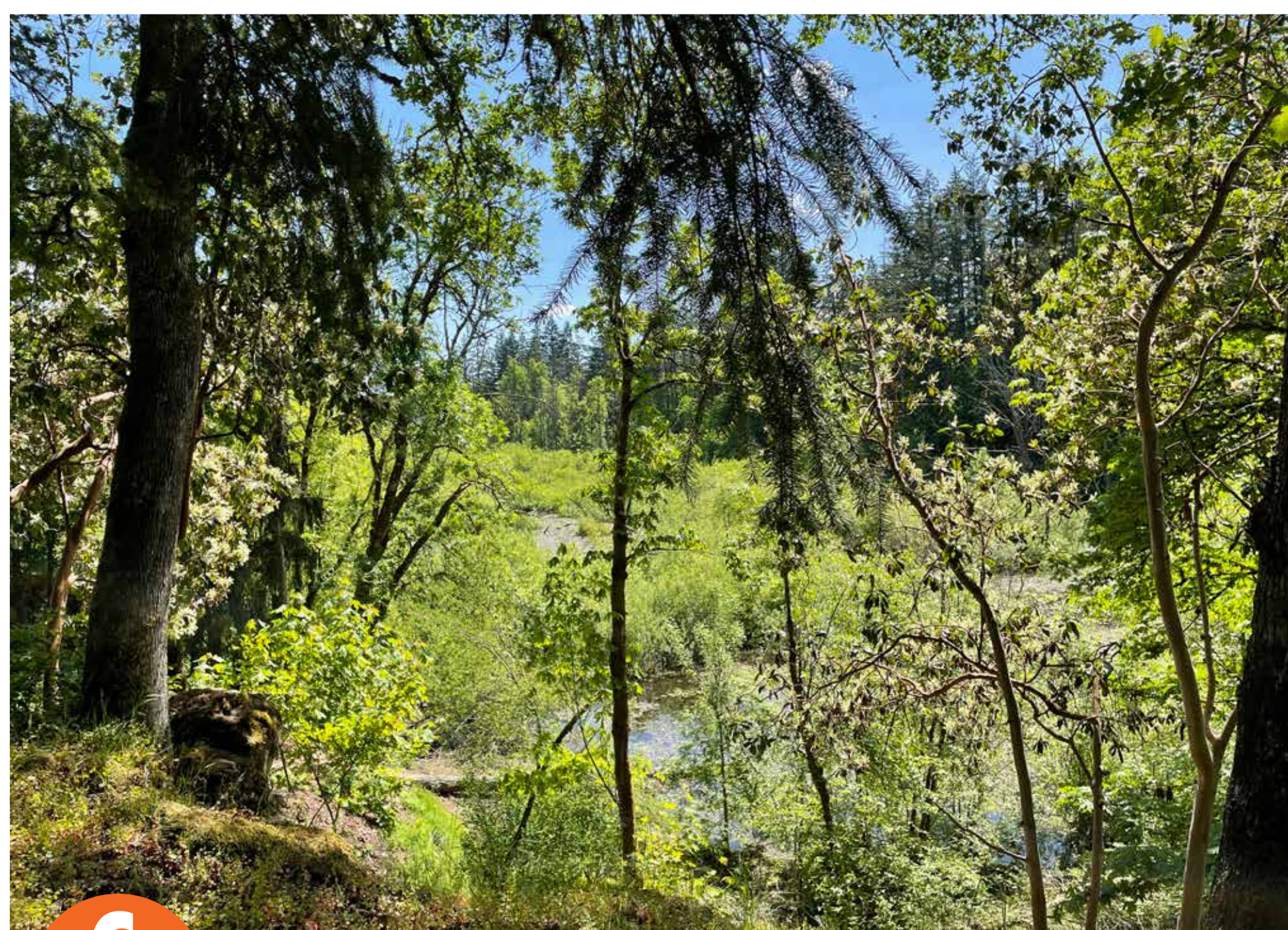
**4** Character of Prime Manufacturing Land  
Carácter de la tierra de zona industrial

Do you know something important or interesting about the Basalt Creek area you want to share?

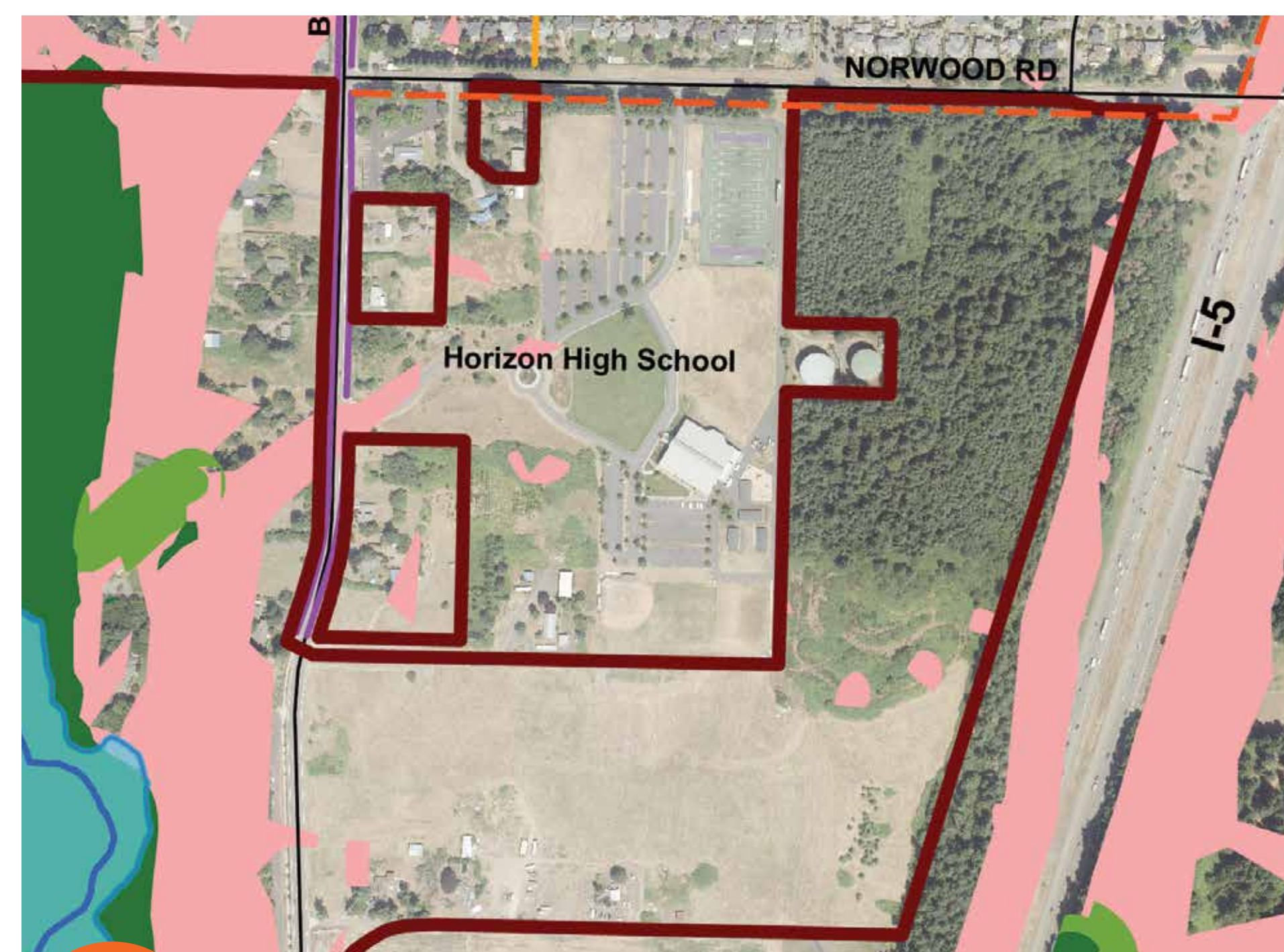
(Write it down on your comment card)

¿Sabe algo importante o interesante sobre el área de Basalt Creek que quiera compartir?

(Escribalo en su tarjeta de comentarios)



**6** Character of the Basalt Creek Canyon  
Carácter del Cañón de Basalt Creek



**5** Future Residential  
Área residencial futura



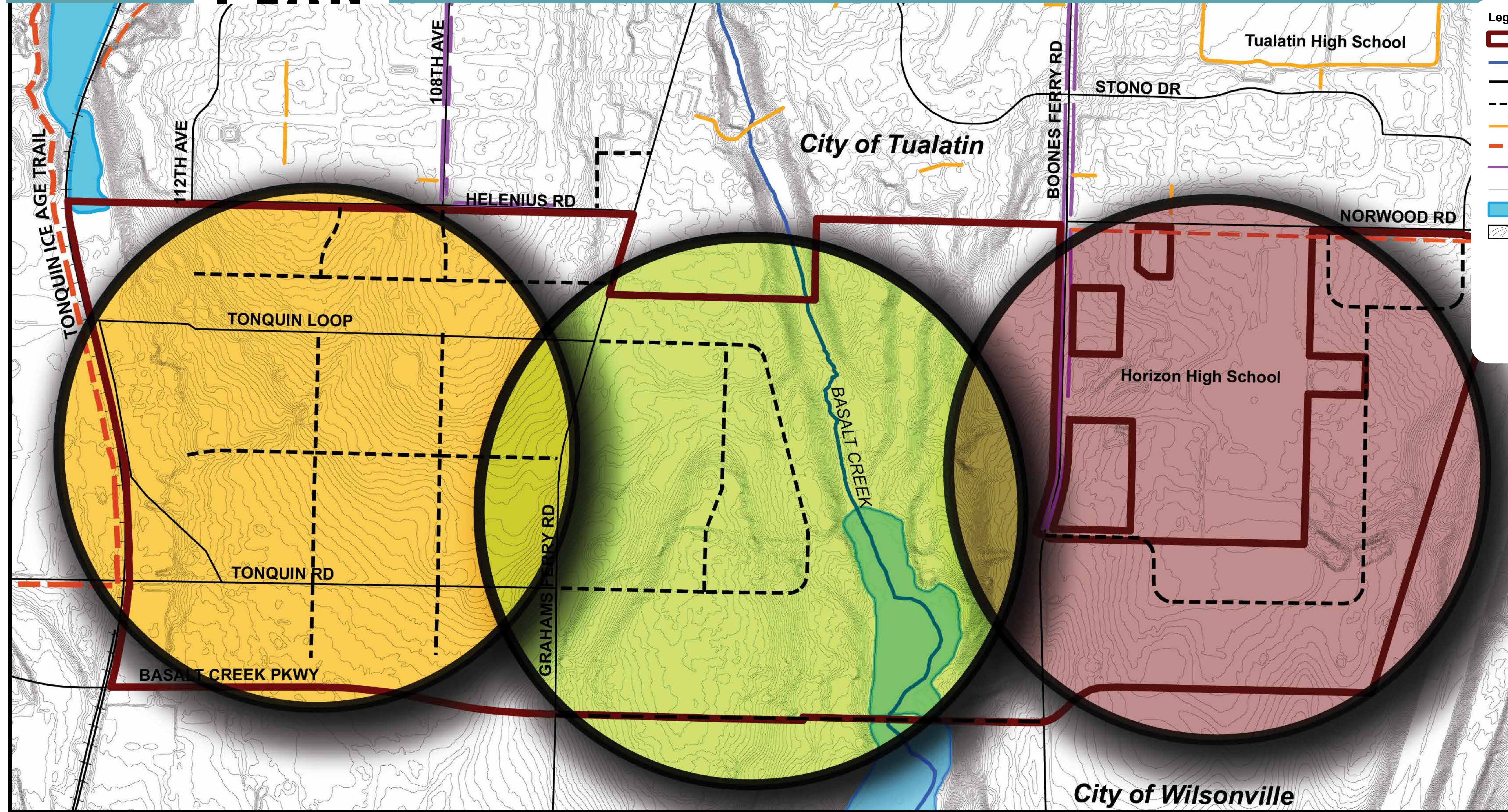


Scan this QR code with your smartphone to go to the project website.  
Escanee este código QR con su teléfono inteligente para ir al sitio web del proyecto.



# TUALATIN BASALT CREEK PARKS & RECREATION CONCEPT MAP

## MAPA CONCEPTUAL DE PARQUES Y RECREACIÓN DE BASALT CREEK DE TUALATIN



Legend / Leyenda	
	Basalt Creek Planning Area / Área de planificación de Basalt Creek
	Streams / Arroyos
	Existing Roads / Carreteras existentes
	Proposed Roads / Caminos propuestos
	Existing Trails / Senderos existentes
	Planned Trails / Senderos planificados
	Existing Bike Lanes / Carriles para bicicletas existentes
	Railroad / Ferrocarril
	Waterbodies / Cuerpos de agua
	Two-foot contours / Contornos de dos pies
Basalt Creek Park Planning / Planificación del parque Basalt Creek	
	West focus area / Área de enfoque oeste
	Central focus area / Área de enfoque central
	East focus area / Área de enfoque este

### East focus area

- Residential area served by developer parks, open space, and street plantings
  - HOA park
  - Public stormwater facilities
  - Other open space and street plantings
- Potential to enhance stormwater facilities with amenities to expand recreation
- Potential partnership opportunity with schools
- Opportunity for trail connections

### West focus area

- Regional trail connection along existing/future roads to new park in the Central focus area
- Small trailhead parking area along regional trail
- Safe non-motorized commuting and walking opportunities for future employees
- Sign improvements for pedestrian navigation

### Área de enfoque oeste

- Conexión de senderos regionales a lo largo de caminos existentes / futuros caminos al nuevo parque en el área de enfoque central
- Área de estacionamiento pequeña al comienzo del sendero, a lo largo del sendero regional
- Oportunidades seguras de desplazamiento no motorizado y caminatas para futuros empleados
- Mejoras en la señalización para peatones

### Central focus area

- Opportunity for a level, future park
- Large neighborhood park (10 acres) with a mix of recreation amenities
- Views of the Basalt Creek Canyon
- Trail connection to residential areas and regional trails

### Área de enfoque central

- Oportunidad para un futuro parque a nivel
- Parque grande del vecindario (10 acres) con una combinación de amenidades recreativas
- Vistas del cañón de Basalt Creek
- Conexión de senderos a áreas residenciales y senderos regionales

### Área de enfoque este

- Área residencial servida por desarrolladores de parques, espacios abiertos y plantas en las calles
- Parque HOA
- Instalaciones públicas de aguas pluviales
- Otros espacios abiertos y plantas
- Potencial para mejorar las instalaciones de aguas pluviales con amenidades para expandir la recreación
- Oportunidad potencial de asociación con escuelas
- Oportunidad para conexiones de senderos





Scan this QR code with your smartphone to go to the project website.  
Escanee este código QR con su teléfono inteligente para ir al sitio web del proyecto.



# Visual Preference Activity

## Actividad de preferencia visual

Use a comment card to let us know which park features (lettered A through M) are a good fit for Tualatin Basalt Creek.

Seleccione las características del parque (con letras de la A a la M) que crea que se ajustan bien a cada una de las áreas de enfoque.

### WEST FOCUS AREA ÁREA DE ENFOQUE OESTE



**A**  
Off Street Trail  
Sendero en la calle



**B**  
On Street Trail  
Sendero en la calle



**C**  
Signage  
Señalización



**D**  
Trail Head Parking  
Estacionamiento al comienzo del sendero

### CENTRAL FOCUS AREA ÁREA DE ENFOQUE CENTRAL



**E**  
Picnic Shelter  
Área para picnic techada



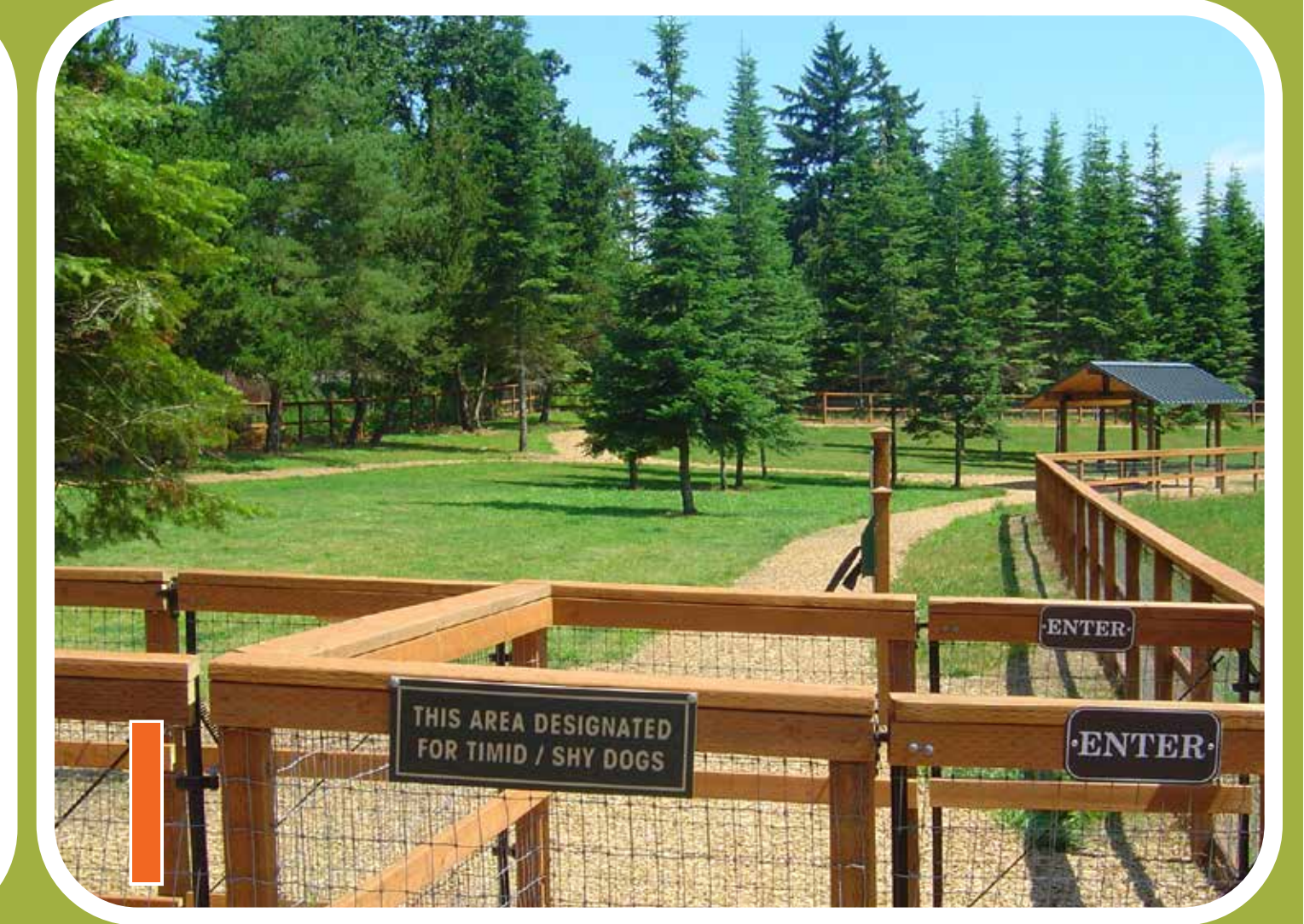
**F**  
Play Area  
Área de juegos



**G**  
Multi-use Field  
Campo de usos múltiples



**H**  
Trail  
Sendero



**I**  
Off-Leash Area  
Área para perros sin correa

### EAST FOCUS AREA ÁREA DE ENFOQUE ESTE



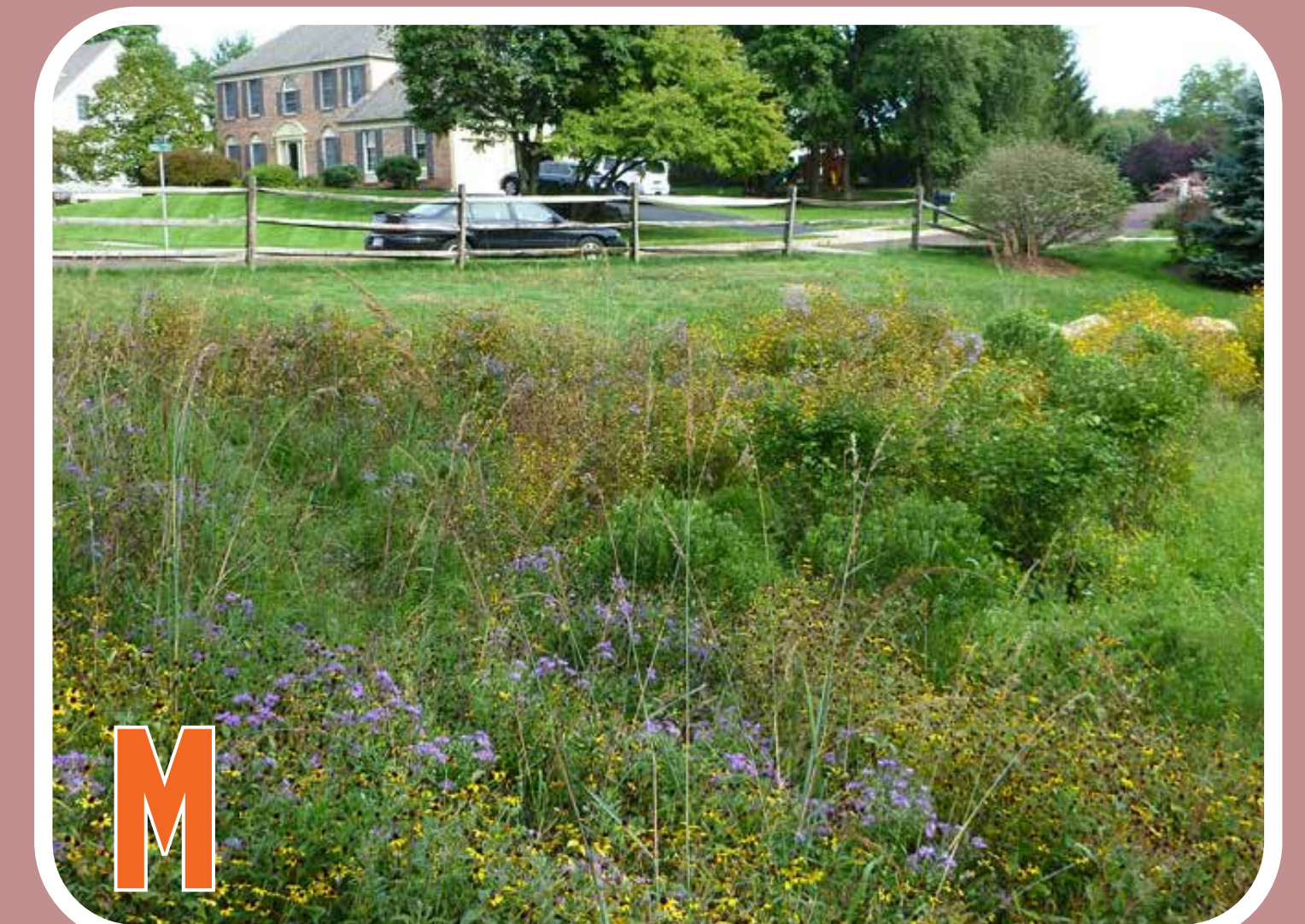
**J**  
Picnic Shelter  
Área para picnic techada



**K**  
Play Area  
Área de juegos



**L**  
Sport Court  
Cancha deportiva



**M**  
Stormwater Planting  
Plantas regadas con aguas pluviales





Scan this QR code with your smartphone to go to the project website.  
Escanee este código QR con su teléfono inteligente para ir al sitio web del proyecto.



# PARK PROGRAM PREFERENCE ACTIVITY

## ACTIVIDAD DE PREFERENCIA DEL PROGRAMA DEL PARQUE

Place one (1) sticker dot near your answer to each of the following questions.

Coloque un (1) puntito adhesivo junto a su respuesta para cada una de las siguientes preguntas.

**Q: In your opinion, why is it important to plan for future parks in developing areas? Use a dot sticker to select one of the four reasons below.**

**P: En su opinión, ¿por qué es importante planificar futuros parques en áreas en desarrollo?**

Preserve, protect & enhance natural areas.  
Preservar, proteger y mejorar las áreas naturales.

Plan for future trail connections & greenways.  
Planificar las futuras conexiones de senderos y vías verdes.

Create space for active recreation including playgrounds, sports fields & sport courts.  
Crear espacio para la recreación activa, incluidos parques infantiles, campos deportivos.

Provide parks & recreation services to the community.  
Proporcionar parques, servicios recreativos y canchas deportivas a la comunidad.

**Q: What is your priority for each of the following types of features in the new Basalt Creek Park? Use dot stickers to indicate your answer for each.**

**P: ¿Cuál es su prioridad para cada uno de los siguientes tipos de características en el nuevo parque Basalt Creek?**

TRAIL SENDERO		
High /Alto	Don't Know / No Lo Sé	Low / Bajo

SPORT FEILD CAMPO DEPORTIVO		
High /Alto	Don't Know / No Lo Sé	Low / Bajo

NATURAL AREA ESPACIO NATURAL		
High /Alto	Don't Know / No Lo Sé	Low / Bajo

SPLASH PAD CHORRITOS PARA MOJARSE		
High /Alto	Don't Know / No Lo Sé	Low / Bajo

PLAYGROUND ÁREA DE JUEGOS INFANTILES		
High /Alto	Don't Know / No Lo Sé	Low / Bajo

SPORT COURT CANCHA DEPORTIVA		
High /Alto	Don't Know / No Lo Sé	Low / Bajo

PICNIC SHELTER ÁREA DE PICNIC CON TECHO		
High /Alto	Don't Know / No Lo Sé	Low / Bajo

OFF LEASH AREA ÁREA PARA PERROS SIN CORREA		
High /Alto	Don't Know / No Lo Sé	Low / Bajo



City of Tualatin  
Parks and Recreation Department



Lake at the Tualatin Commons

# Equity and Inclusion Plan







Splash Pad at the Tualatin Commons

# TUALATIN CITY COUNCIL 2030 VISION

An inclusive community that promotes access, diversity and equity in creating a high quality of life for everyone.

# PARKS & RECREATION MASTER PLAN GOAL

Activate parks and facilities through vibrant programs, events, and recreation opportunities for people of different ages, abilities, cultures, and interests.



# PLAN DEVELOPMENT TIMELINE



Active Adult Recreation Trip

# 2020

# STAGE 1

June - July

July

Fall

Staff development of initial goals and objectives:

Internal first draft plan developed:

First Round of committee presentations, including feedback, input and edits:

- Tualatin Library Advisory Committee
- Youth Advisory Committee
- Tualatin Parks Advisory Committee
- Tualatin Arts Advisory Committee

External partner presentations/review including feedback, input and edits:

- Metro Parks and Nature
- Tigard Tualatin School District
- Tualatin Riverkeepers
- Willowbrook Arts Camp Board of Directors
- Tualatin Historical Society Board of Directors
- Youth sports groups-Boards of Directors
- Other groups as determined

Second Round of Committee input and edits, and Stage 1 approval

- Youth Advisory Committee
- Tualatin Parks Advisory Committee
- Tualatin Arts Advisory Committee

# 2021

Spring/Summer

Winter

# 2021

# STAGE 2

Hire consultant to lead external engagement

Develop practices, action items and measurable outcomes/work plan

City Committee feedback, input, edits and Stage 2 approval

Tualatin Parks & Recreation Committee Final Approval



Tualatin Commons



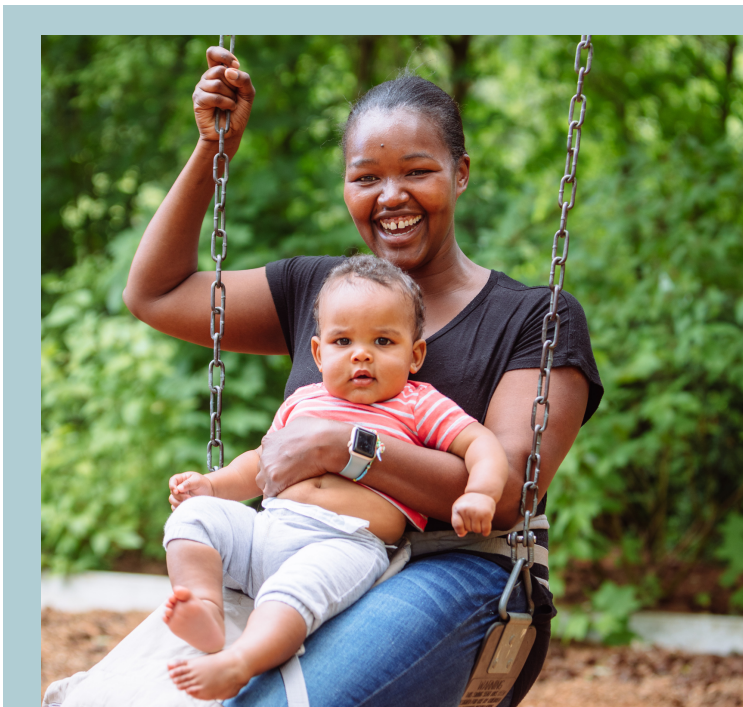


Tualatin Commons Splash Pad

# PURPOSE STATEMENT/ STATEMENT OF INTENT

The City of Tualatin Parks and Recreation Department is committed to creating and promoting equity and inclusion across all public art, public spaces, places, facilities and programs that the department owns or manages.

Through this Equity and Inclusion Plan and supporting action and practices, we aim to ensure that everyone, including historically marginalized minority, low-income earning, and/or limited English proficiency communities have access to the benefits of quality parks and recreation programming, facilities, parks, public spaces and natural areas.



Tualatin Community Park

## POLICY GOALS

The Equity and Inclusion Plan outlines The City of Tualatin Parks and Recreation Department's approach to ensuring inclusive environments and equitable opportunities for all community members in local parks and recreation. This policy applies to all community members, staff, and sites within the City of Tualatin Parks and Recreation Department.



# GOAL 1

Tualatin Parks and Recreation Department hires, trains and promotes its workforce equitably

- Invest in continuing education and inclusive staff culture
- Encourage staff to participate on the City's and Regional diversity, equity and inclusion (DEI) workgroups and teams
- Strengthen the diversity of the workforce and volunteers
- Build department capacity for multiple language proficiency



Viva Tualatin Celebration at Tualatin Community Park

# GOAL 2

Tualatin Parks and Recreation Department meaningfully engages historically marginalized communities

- Support and strengthen participation of all community members within engagement processes
- Strengthen representation on committees by all people including those with differing abilities, race, age, culture, sexual orientation, gender identity, language, income, religion or country of origin.
- Invest in equitable participation and engagement
- Honor indigenous and community connection to land

# GOAL 3

Tualatin Parks and Recreation Department creates safe and welcoming services, programs, parks and public spaces.

- Develop a plan to promote accessibility and eliminate physical barriers (ADA) to participation in facilities and parks
- Provide equitable opportunities regardless of ability, race, age, culture, sexual orientation, gender identity, language, income, religion or country of origin
- Promote inclusivity in the operations of park and recreation facilities and public spaces
- Ensure equitable prioritization, allocation and use of parks, public spaces and facilities
- Ensure all parks and active recreation areas are well designed and managed to promote safety.

# GOAL 4

Tualatin Parks and Recreation Department allocates resources to advance racial equity and inclusion:

- Invest in programs, parks, facilities, natural areas and open spaces equitably
- Develop, maintain and monitor mechanisms that measure equitable investment

# GOAL 5

Tualatin Parks and Recreation Department consistently measures, regularly reports and continuously improves equity and inclusion practices

- Establish the organizational process for management and oversight
- Maintain ongoing monitoring of this plan's progress toward established goals and objectives



Tualatin Parks & Recreation  
Equity and Inclusion Plan

**Goal 1** Tualatin Parks & Recreation Department hires, trains, and promotes its workforce equitably

Objective	Action Item	Initiation Date	Action Item	Initiation Date	Action Item	Initiation Date
Invest in continuing education and inclusive staff culture	Require staff participation in at least one DEI educational opportunity per year.	2022				
Encourage staff to participate in city's DEI workgroups	Allow for space and paid time for staff to attend workgroups	2022				
Strengthen diversity of workforce and volunteers	Work with Human Resources department to identify and reduce barriers to application/employment	2022	Identify opportunities and organizations to increase job posting outreach	2022		
Build department capacity for multiple language proficiency	Include bilingual ability as a highly preferred skill in job postings	2022	Support staff opportunities for continuing education	2022		

**Goal 2** Tualatin Parks and Recreation Department meaningfully engages historically marginalized communities

Objective	Action Item	Initiation Date	Action Item	Initiation Date	Action Item	Initiation Date
Support and strengthen participation of all community members within engagement processes	Budget and plan additional time and resources for community outreach and engagement for all park planning and development projects	2022				

<b>Strengthen representation on committees by all people including those with differing abilities, race, age, culture, sexual orientation, gender identity, language, income, religion, or country of origin.</b>	Identify community leaders to assist with direct contact and recruitment of committee members	2022	Research and identify barriers to participation	2022	Propose solutions to reduce barriers to participation on committees	2022
<b>Invest in equitable participation and engagement</b>	Provide information in multiple languages	2022	Provide outreach/marketing via text message or other alternate formats	2022		
<b>Honor indigenous and community connection to land</b>	Native lands acknowledgement at all public and committee meetings	2022	Support the City's internal and external growth in this area	2022		

**Goal 3** Tualatin Parks and Recreation Department creates safe and welcoming services, programs, parks, and public spaces

<b>Objective</b>	<b>Action Item</b>	<b>Initiation Date</b>	<b>Action Item</b>	<b>Initiation Date</b>	<b>Action Item</b>	<b>Initiation Date</b>
<b>Develop a plan to promote accessibility and eliminate physical barriers to participation in facilities and parks</b>	Take specific actions on ADA Transition Plan each year by allocating funding in the annual budget process using funding from utility fee	2022				
<b>Provide equitable opportunities regardless of ability, race, age, culture, sexual orientation, gender identity, language, income, religion, or country of origin.</b>	Fund scholarship program and promote to all members of the community, hold percentage of available program spaces for scholarship applicants.	2022	Hold programs and events in neighborhood parks and historically underserved areas	2022		

<b>Promote inclusivity in the operations of park and recreation facilities and public spaces</b>	Include art and imagery inclusive of diversity	2022	Schedule staff parks maintenance, park rangers) to ensure presence in underserved parks during peak use times	2022		
<b>Ensure equitable prioritization, allocation, and use of parks, public spaces, and facilities</b>	Development of joint prioritization and fee structure for use of sports fields with TTSD/ City of Tigard	2022	Ensure historically underserved areas and facilities are maintained at the same service level as other parks	2022		
<b>Ensure all parks and active recreation areas are well designed and managed to promote safety.</b>	Meet with police department to discuss community needs	2022	Create and utilize a public reporting system for parks	2022	Utilize CPTED standards when designing parks and facilities	2022

**Goal 4** Tualatin Parks and Recreation Department allocates resources to advance racial equity and inclusion

<b>Objective</b>	<b>Action Item</b>	<b>Initiation Date</b>	<b>Action Item</b>	<b>Initiation Date</b>	<b>Action Item</b>	<b>Initiation Date</b>
<b>Invest in programs, parks, facilities, natural areas, and open spaces equitably</b>	Create and utilize tool to measure and ensure equitable parks development throughout the city	2022	Invest in park infrastructure to enable new programs and events	2022	Ensure all active recreation areas are maintained at the same service level	
<b>Develop, maintain, and monitor mechanisms that measure equitable investment</b>	Create and utilize tool to measure and ensure equitable parks development throughout the city	2022	Invest in park infrastructure to enable new programs and events	2022		

**Goal 5** Tualatin Parks and Recreation Department consistently measures, regularly reports, and continuously improves equity and inclusion practices

<b>Objective</b>	<b>Action Item</b>	<b>Initiation Date</b>	<b>Action Item</b>	<b>Initiation Date</b>	<b>Action Item</b>	<b>Initiation Date</b>
<b>Establish the organizational process for management and oversight</b>	Create and utilize tool to measure and ensure equitable parks development throughout the city	2022	Create an internal feedback and accountability program and process	2022	Create an external feedback reporting program and process	
<b>Maintain ongoing monitoring of this plan's progress toward established goals and objectives</b>	Regular reports to Tualatino group	2022	Regular reports to Tualatin Park Advisory Committee	2022		

**Goal #1 diverse staff**

Bilingual staff	15
Utilize other communication methods (text, social media, flyers at stores, schools, banners at parks etc)	11
Provide info in Spanish	5
Disability advocates	2
Diverse imagery and art	2
Partner with schools	2
Update parks signage	2

**Goal #2 involve the community**

Include community in feedback, decision making	10
Inform the community on parks projects, spending, etc	4
Volunteer opportunities	2
Connect with community leaders	2

**Goal #3 safe and welcoming parks and programs**

Patrol, enforcement, visibility of staff (police, parks maintenance, park rangers)	19
Update and maintain park amenities (playground, courts, etc)	9
Traffic and parking safety	7
Keep parks, restrooms clean	5

**Goal #4 use funding to provide equitable services**

Provide events and activities at parks	20
ADA accessibility	6
Use funding to provide free or low-cost programs	5
Improvements in underserved parks	2
Traffic improvements	1

**Goal #5 keep learning and improving**









No specific feedback	



# BOONES FERRY CORRIDOR SIDEWALK AND BIKE LANE PROJECT

## RECOMMENDATIONS MAP

### LEGEND

-  Fill Bike Lane Gap
-  Replace existing sidewalk. Reconstruct driveway aprons if needed to meet ADA standards
-  Construct new sidewalk to fill gaps
-  Repair or replace segments of the existing asphalt path
-  Bus stop improvements
-  Bus stop location shift
-  Reconstruct corner ramps to meet standards for accessibility
-  Install new pedestrian-activated flashing signal and crosswalk



Data from Metro RLIS  
Map Produced 5/3/2021



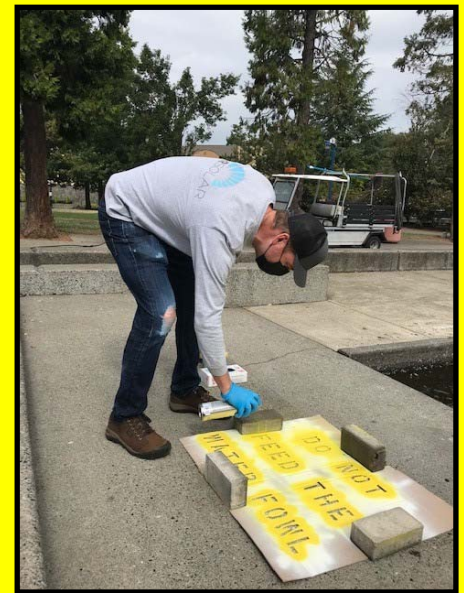




# Hug A Park Commons Lake Park September 17, 2021

## Thank You Volunteers for Keeping Tualatin Green and Clean!

- 4 enthusiastic A & R Solar team members spent the morning giving the Commons a Hug. They added bark dust, painted signs, spruced up flower pots and power washed the lake edge.
- 5 yards of bark dust was installed on the North end of the Lake and at the entrance.
- “Do Not Feed the Water Fowl” signage was installed to inform the public of the best way to discourage the duck and goose population.



# October 2021

Sunday	Monday	Tuesday	Wednesday	Thursday	Friday	Saturday
		Hispanic Heritage Month Sept. 15 - Oct. 15			1	2
3	4	5	6	7	8	9 Tualatin Pumpkin Hunt through Oct. 31
10	11 7 pm Council Meeting	12 6 pm TPARK Meeting	13	14	15	16 12-3 pm Pumpkins & Pints
17	18	19	20	21	22	23 Cancelled: Pumpkin Regatta
24	25 7 pm Council Meeting	26	27	28 Howl-O-Ween Dog Photo Contest submissions due	29	30
	31					



# November 2021

Sunday	Monday	Tuesday	Wednesday	Thursday	Friday	Saturday
	1	2	3	4	5	6
7	8 7 pm Council Meeting	9 6 pm TPARK Meeting	10	11 Veterans Day	12	13
14	15	16	17	18	19	20
21	22 7 pm Council Meeting	23	24	25 Thanksgiving	26	27
28 Hanukkah	29	30				

# December 2021

Sunday	Monday	Tuesday	Wednesday	Thursday	Friday	Saturday
			1	2	3	4
5	6	7	8	9	10	11
12	13 7 pm Council Meeting	14 6 pm TPARK Meeting	15	16	17	18
19	20	21	22	23	24	25 Christmas Day
26 Kwanzaa	27	28	29	30	31 New Year's Eve	