



## MEETING NOTICE

### TUALATIN PARK ADVISORY COMMITTEE

July 9, 2018 - 6:00 PM

Parks and Recreation Office  
8515 SW Tualatin Road

---

#### **A. CALL TO ORDER**

1. Roll Call

#### **B. APPROVAL OF MINUTES**

1. April 17, 2018

#### **C. ANNOUNCEMENTS**

1. Chair
2. Staff
3. Public

#### **D. OLD BUSINESS**

1. Parks and Recreation Master Plan Update
  - a. Project Advisory Committee Meeting #5 Review
  - b. Council Presentation Update
  - c. Systemwide and Site Recommendations
  - d. Next Steps
2. Trail Projects Update
  - a. Tualatin River Greenway Trail (River Ridge, RV Park)
  - b. Saum Creek Greenway Trail (Sagert Farm)
3. Heritage Tree Designation
4. Park and Recreation Month Proclamation

#### **E. NEW BUSINESS**

1. Oregon Parks & Recreation Department Local Government Grant
  - a. Ibach Park Play Area
2. Ice Age Tonquin Trail Acquisition
3. ArtSplash Art Show and Sale
4. Summer on the Commons Events
5. Summer Recreation and Library Programs

#### **F. FUTURE AGENDA ITEMS**

#### **G. COMMUNICATIONS FROM COMMITTEE MEMBERS**

#### **H. ADJOURNMENT**



## DRAFT MINUTES

### TUALATIN PARK ADVISORY COMMITTEE

April 17, 2018

COMMUNITY SERVICES ADMINISTRATION OFFICE  
Van Raden Community Center  
8509 SW Tualatin Road

---

**MEMBERS PRESENT:** Krista Nanton, Dana Paulino, Anthony Warren, Dennis Wells

**MEMBERS ABSENT:** Valerie Pratt (excused), Christen Sacco (excused)

**STAFF PRESENT:** Paul Hennon, Community Services Director  
Rich Mueller, Parks and Recreation Manager

**PUBLIC PRESENT:**

**OTHER:**

---

#### **A. CALL TO ORDER**

Chair Dennis Wells called the meeting to order at 6:25 pm.

#### **B. APPROVAL OF MINUTES**

The minutes of the February 13 and March 13, 2018 meetings were unanimously approved, on a motion from Anthony Warren, and second by Krista Nanton.

#### **C. ANNOUNCEMENTS**

1. Chair  
There were none.
2. Staff  
Paul Hennon announced his retirement to committee members.
3. Public  
There were none.

#### **D. OLD BUSINESS**

1. Parks and Recreation Master Plan Update  
The committee discussed the next phase of the project, which includes goals and recommendations. The next meeting is expected to be scheduled in May to review and obtain PAC input and comments on the values, vision, mission, goals, and objectives.
  2. Trail Projects Update  
Rich Mueller provided a brief status report on the Tualatin River Greenway Trail at River Ridge Apartments and former RV Site of Portland. An update on the progress of the Saum Creek Greenway Trail at Sagert Farms and the Ice Age Tonquin Trail was provided.
-

## Tualatin Parks Advisory Committee Meeting Minutes – April 17, 2018

### 3. Annual Report of the Committee

The committee received the final report and presentation that Chair Dennis Wells presented at the March 26, 2018 Council meeting. Dennis discussed the Council input and comments from the presentation.

### 4. Arbor Week Presentation

Members received the final presentation that Valerie Pratt presented to Council at the March 26, 2018 meeting. The presentation was well received, and Mayor Ogden recognized the post contest winners, and Arbor Week Proclamation.

## **E. NEW BUSINESS**

### 1. Oregon Parks & Recreation Department Local Government Grant

Rich Mueller provided an update on the status of the state matching grant application for Ibach Park playground surface replacement, which includes replacing five play features. The committee recommended the Council support the grant application and project, which Council approved by resolution on March 26, 2018.

### 2. Budget Information

An update on the City budget process and status of recreation budget items were discussed.

### 3. Willowbrook Art Camp

The art and environmental camp program booklet was distributed and reviewed.

### 4. National Recreation & Park Association Information

Two NRPA reports were distributed to committee members. These included the Economic Impact of Local Parks and 2018 Agency Performance Review.

### 5. Crawfish Festival

The Crawfish Festival schedule and event layout was shared with the committee.

## **F. FUTURE AGENDA ITEMS**

## **G. COMMUNICATIONS FROM COMMITTEE MEMBERS**

## **H. ADJOURNMENT**

Chair Dennis Wells adjourned the meeting at 7:15 pm.



# MEMORANDUM

## CITY OF TUALATIN

**TO:** Honorable Mayor and Members of the City Council

**THROUGH:** Sherilyn Lombos, City Manager

**FROM:** Nicole Morris, Deputy City Recorder  
Ross Hoover, Parks and Recreation Director

**DATE:** 07/09/2018

**SUBJECT:** Parks and Recreation Master Plan Project Update

---

### **ISSUE BEFORE THE COUNCIL:**

The Council will receive a status report from staff and the project consultant on the Parks and Recreation Master Plan Update Project with a focus on the Systemwide Recommendations and Site Recommendations.

### **EXECUTIVE SUMMARY:**

The Parks and Recreation Master Plan Update Project was initiated in July of 2017 and has now progressed through several phases. This status report will inform Council of the project schedule and focus on project recommendations based on community outreach findings. This is an opportunity for Council to provide direction on the appropriateness of the systemwide and site recommendations.

#### **Project Phases Completed To-Date and/or In-Process**

- Phase 1: Project Initiation and Planning Context (completed)
- Phase 2: System Inventory and Analysis (completed)
- Phase 3: Needs Assessment and Public Outreach (completed)
- Phase 4: ADA Assessment and Transition Plan (in-process)
- Phase 5: Goals and Recommendations (in-process)
- Phase 6: Funding and Action Plan
- Phase 7: Plan Review and Adoption

The attached documents and PowerPoint presentation provides an overview of the Systemwide and Site Recommendations that the Project Advisory Committee reviewed and provided comments at their June 19, 2018 meeting.

For summaries and detailed reports on each phase of the project, please see the project website at:

<https://www.tualatinoregon.gov/recreation/webforms/parks-recreation-master-plan-update>.

## NEXT STEPS

The immediate next steps consist of preparing the Draft Funding, Capital Projects List, and Action Plan, and reviewing them with the Project Advisory Committee and the City Council during the summer.

The Draft Plan for Public, Project Advisory Committee, and Council review is scheduled for summer and fall with the Plan Adoption to be considered in the fall or winter 2018.

---

**Attachments:**    PowerPoint  
                          Systemwide Recommendations and Site Recommendations



# TUALATIN

Accessible, Inclusive & Vibrant  
Parks and Recreation



## PARKS AND RECREATION MASTER PLAN



**Systemwide  
& Site  
Recommendations**



# Project Phases

Project Phases Completed To-Date and/or In-Process

- Phase 1: Project Initiation and Planning Context
- Phase 2: System Inventory and Analysis
- Phase 3: Needs Assessment and Public Outreach
- Phase 4: ADA Assessment and Transition Plan
- **Phase 5: Goals and Recommendations**
- Phase 6: Funding and Action Plan
- Phase 7: Plan Review and Adoption

# Goals & Objectives

- **Goals**

Directions for long-range change.

Where do we want to be in the future?

- **Objectives**

Specific and measurable outcomes that contribute to achieving our goals.

What do we want to achieve?

- **Recommendations**

Specific activities and initiatives that will achieve the stated goal.

What steps will we take to achieve our goals?



# Recommendations

- **Systemwide Recommendations** provide overarching direction for the development, programming & management of the parks & recreation system.
- **Site Specific Recommendations** identify a general direction for site improvements followed by opportunities to consider when updating or developing sites.

# Systemwide Recommendations

## Goal 1: Accessible and inclusive parks and facilities

### Recommendations:

- Consider equity, access, and the distribution and location of existing facilities when adding new ones to improve access.
- Provide a universal play area to meet the needs of all residents, including those of varying abilities.
- Provide parks, facilities, and services that consider the needs of people of all demographics, including different ages, gender, incomes, race/cultures, family configuration, and education levels.

# Systemwide Recommendations

## Goal 2: Create a walkable, bikeable, and interconnected city by providing a network of regional and local trails

### Recommendations:

- Coordinate with Metro and neighboring communities to plan, design, and develop regional trails, such as the Ice Age Tonquin Trail, in Tualatin as proposed.
- Develop park entries and access points for pedestrian and bicyclists where trails connect to parks and greenways.
- Consider adding lighting to selected trails corridors to increase commuter and after-hours use and improve trail safety.

# Systemwide Recommendations

## Goal 3: Conserve & restore natural areas

### Recommendations:

- Create a natural resource management plan for significant natural areas, identifying the tasks, frequencies, staffing, and budget needed to manage and maintain them to established maintenance standards to accomplish a level of good ecological conditions for natural resources management.
- Seek to acquire contiguous natural areas and connected corridors to create larger habitat areas and wildlife migration routes.
- Develop and maintain parks to support nature programs and events in designated locations, including birding and wildlife viewing, nature play, etc.

# Systemwide Recommendations

## Goal 4: Vibrant programs, events, & recreation opportunities for all

### Recommendations:

- Create and redefine programs to support the City's vision and values, including cultural diversity, inclusiveness, health and wellness, conservation and stewardship, and others.
- Ensure there are adequate resources readily available to continue successful programs such as the Pumpkin Regatta, Blender Dash, and Summer on the Commons that support community identity, and that promote Tualatin as a destination place for tourism.
- Examine full service recreation programs to expand and enhance the needs and desires of the community.

# Systemwide Recommendations

## Goal 5: Support public arts through programs, parks, and public spaces

### Recommendations:

- Consider decorative and artistic elements in parks, greenways and trails such as creative bicycle racks and benches, unique lampposts, decorative sidewalk paving, wall etchings and mosaics, artistic planters, wide sidewalk promenades, interpretive and educational features, murals, monuments, and modern media in the design development phase of a site.
- Evaluate options to provide permanent and/or additional outdoor performance space, such as a small amphitheater or multiuse fountain/plaza/performance space.
- Work closely with the City's economic development division to create strategies that advance public arts as a tourism generating sector.

# Systemwide Recommendations

## Goal 6: Promote unique identity, economic vitality, and tourism

### Recommendation:

- Market and promote the City as a tourist destination, emphasizing the City's parks, trails, and programs, between Portland Metro and Willamette Valley wine country.
- Strengthen connections between Tualatin Community Park, the Library, and Tualatin Commons to serve as a community and tourist focus point for civic life, recreation, public art, and cultural opportunities.
- Continue to collaborate and cultivate partnerships to increase Department influence and support. Work with the School District, sports leagues, and contract program providers to enhance recreation options.

# Systemwide Recommendations

## Goal 7: Manage and maintain parks, facilities, and programs

### Recommendations:

- Modify and implement the System Development Charge (SDC) methodology to support park, greenway, and trail development in residential, commercial, and industrial areas in accordance with state law.
- Develop and maintain relationships with targeted public and private organizations and entities to support City objectives and standards for providing recreation opportunities.
- Continue to provide high-quality services and support friendly, welcoming, and inclusive recreation environments.



# Site Recommendations

# Site Recommendations

## Large Neighborhood Parks

Atfalati Park



Ibach Park



Jurgens Park



# Site Recommendations

## Small Neighborhood Parks

Lafky Park, Tualatin Commons, Stoneridge Park



# Site Recommendations

## Community Parks

Tualatin Commons & Tualatin Community Park



# Site Recommendations

## Natural Parks & Areas

Brown's Ferry Park, Little Woodrose, Other Natural Areas



# Site Recommendations

## Trails & Greenways

**Regional** - Tualatin River Greenway & Ice Age Tonquin Trail

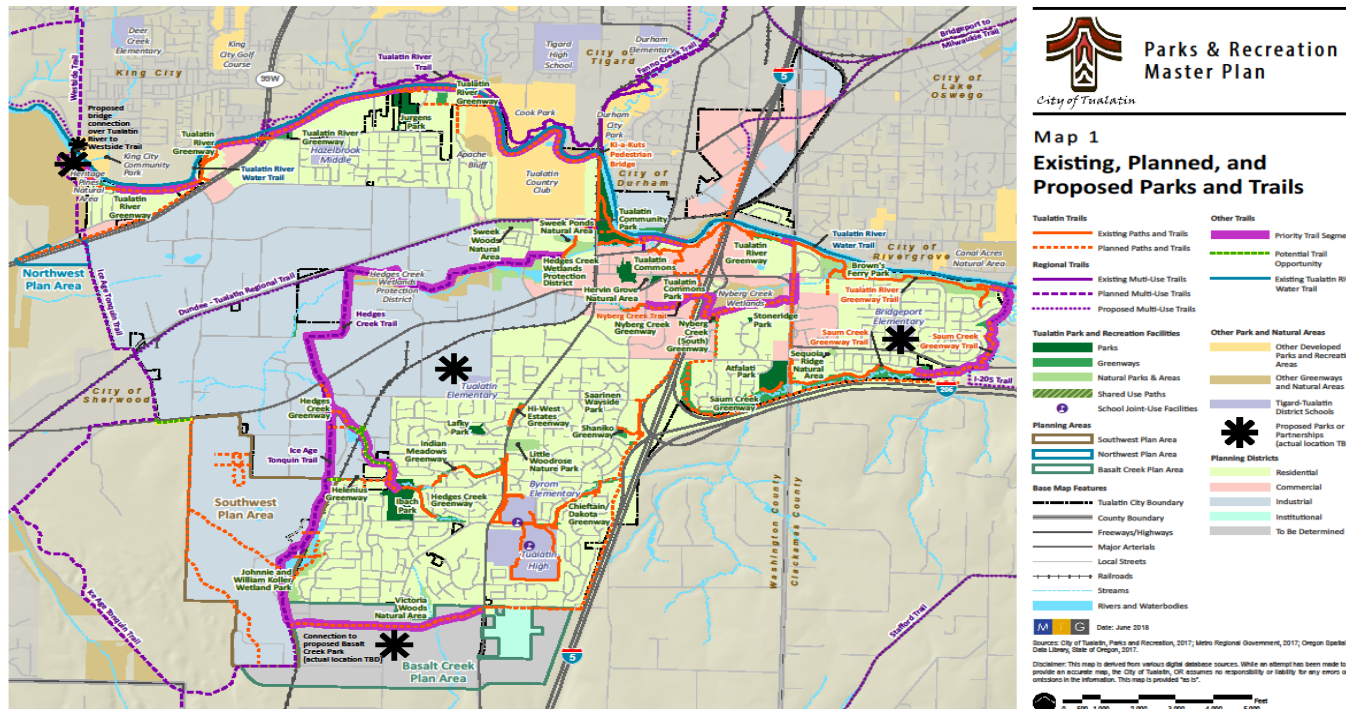
**Local** - Hedges Creek, Nyberg Creek, & Saum Creek



# Site Recommendations

## New Parks & Potential Partnerships

Basalt Creek, East Tualatin, Pony Ridge, and South/Central Tualatin



# Site Recommendations

## New Facilities

### Community Recreation Center





# Site Recommendations

## New Facilities

### Sports Fields & Courts



# Site Recommendations

## New Facilities

### Outdoor Facilities

- Dog Parks
- Community Gardens
- Water Access
- Fitness Equipment
- Activity Spots



# Site Recommendations

## Public Art



# Next Steps

- Funding and Action Plan, Summer
- Draft Plan Review, Fall
- Plan Adoption Proposed, Fall/Winter

# Questions & Comments





# PARKS & RECREATION MASTER PLAN

## GOALS, OBJECTIVES & SYSTEMWIDE RECOMMENDATIONS (REVISED DRAFT)

### Introduction

The aspirations for Tualatin’s parks, greenways, natural areas, trails, recreation programs, events and public art are the guiding forces for the Parks & Recreation Master Plan (Master Plan). The community’s vision and priorities provide a foundation for the specific recommendations City staff will implement to achieve the goals and objectives of the Master Plan. These goals, objectives, and systemwide recommendations provide overarching direction for the development, programming, and management of the park and recreation system.

These systemwide recommendations provide the context for the additional site recommendations contained in the next document. Together, the objectives, systemwide recommendations, and site recommendations will provide the basis for achieving the Master Plan goals and obtaining the community’s vision for the future.

### Goals, Objectives and Systemwide Recommendations

The Master Plan objectives and systemwide recommendations, presented on the following pages, are organized into seven central goals. Table 1 explains the relationship between goals, objectives, and recommendations in the Master Plan.

Table 1: Master Plan Framework

Goals	Objectives	Recommendations
Goals are directions for long-range change. <i>Where do we want to be in the future?</i>	Objectives are specific and measurable outcomes that contribute to achieving the stated goal. <i>What do we want to achieve?</i>	Recommendations are specific activities and initiatives that will achieve the stated goal. <i>What action steps will we take to achieve our goals?</i>

Seven goals represent the City's overarching directions for the park and recreation system:



**Goal 1:** Expand accessible and inclusive parks and facilities to support community interests and recreation needs.



**Goal 2:** Create a walkable, bikeable, and interconnected City by providing a network of regional and local trails.



**Goal 3:** Conserve and restore natural areas to support wildlife, promote ecological functions, and connect residents to nature and the outdoors.



**Goal 4:** Activate parks and facilities through vibrant programs, events, and recreation opportunities for people of different ages, abilities, cultures, and interests.



**Goal 5:** Support the arts through programs, parks, and public spaces that reflect Tualatin's identity, heritage, history, and expressive character.



**Goal 6:** Promote Tualatin's unique identity, economic vitality, and tourism through parks, natural resources, historic preservation, events, programs, and placemaking.



**Goal 7:** Manage, administer and maintain quality parks, facilities, and programs through outstanding customer service, stewardship, and sustainable practices.

Goals, objectives, and systemwide recommendations are structured in the following format:

**Goal X**

Xa. Objective

Xa.1 Recommendation



**Goal 1: Expand accessible and inclusive parks and facilities to support community interests and recreation needs.**

1a. Provide parks, greenways, and natural areas in residential areas.

- 1a.1 Strive to provide access to parkland or a recreation resource within a ½-mile travel distance from residential homes. (Note: Parkland includes parks, greenways and natural areas. Recreation resources include joint-use facilities and shared use paths.)
- 1a.2 Acquire and develop parkland in targeted underserved areas and near new residential development to meet neighborhood needs, as guided by park design and development guidelines.
- 1a.3 Develop parkland in underserved areas to meet the needs of nearby neighbors. Consider partnerships with the Tigard-Tualatin School District, Metro, and others, and, if feasible, develop parkland in unserved areas. These partnerships may include development at partner sites, joint-use agreements for school facilities, and/or improved access and connections to partner sites.

1b. Provide parks, greenways, and natural areas in commercial and industrial areas to meet the needs of employees.

- 1b.1 When planning areas expand, apply applicable park, recreation, and library standards to conserve natural resources and assure the availability of facilities, programs, and services citywide.
- 1b.2 Ensure that all new expansion areas and concept area plans include provisions for natural areas, greenways and trails, as aligned with regional, state and/or federal criteria.
- 1b.3 Continue to coordinate with City staff and officials to provide parks, natural areas, greenways, and trails in the Basalt Creek Concept Plan Area.
- 1b.4 Consider options to collaborate in the provision of privately owned public open spaces that clearly set expectations for public access, recreation use, and natural elements in commercial and industrial areas.

1c. Provide more parks, greenways and natural areas to maintain the City’s existing level of service for parkland to support community livability as Tualatin grows.

- 1c.1 Provide a mix of parks, greenways and natural areas, aiming for 13.5 acres per 1,000 residents and exceeding this target if opportunities arise (through acquisitions, partnerships, easements, or donations) that are consistent with the goals of the Master Plan.



- 1c.2 Strive to achieve 5 acres of developed parks per 1000 residents, carrying forward Tualatin’s long-standing target.
  - 1c.3 Continue to provide 4.5 acres per 1,000 residents for greenways and 4.0 acres per 1,000 residents for natural areas.
  - 1c.4 Site new parks to connect with the on- and off-street bike networks and, where feasible, with the regional trail network.
  - 1c.5 Acquire land in advance of need to assure the future availability of land for park and recreation use at the most reasonable cost.
- 1d. Address deferred maintenance projects and improve facility conditions by implementing an asset replacement plan.
- 1d.1 Prioritize and sequence deferred maintenance projects identified in the Master Plan in annual capital improvement planning and annual operating budgets.
  - 1d.2 Identify and track the safety and lifecycle of existing facilities to plan for their replacement or renovation when worn.
  - 1d.3 Evaluate new trends and changing needs before making like-for-like replacements of old, worn, damaged facilities; ensure best practices and current and future recreation needs are addressed.
  - 1d.4 Ensure resources, in particular funding, is available to provide necessary maintenance and upkeep of existing facilities and landscaping to lengthen the lifespan of facilities and minimize deferred projects.
- 1e. Distribute a variety of recreation amenities and facilities throughout Tualatin to improve recreation opportunities and access.
- 1e.1 Consider equity, access, and the distribution and location of existing facilities when adding new ones to improve access.
  - 1e.2 Increase the variety of sport and recreation options to respond to new trends and needs. Consider adding facilities such as pickleball courts, futsal courts, outdoor fitness equipment, bike skills course/pump track, climbing walls, bocce, game tables, dog parks, skate parks, etc.
  - 1e.3 Design new facilities in parks for multipurpose uses.
  - 1e.4 Consider joint-use and programming opportunities in schools across the City to address indoor recreation needs.
  - 1e.5 Evaluate opportunities for a new community park with space to include elements such as sports fields, sports courts, picnic areas, nature interpretive areas, and other specialized facilities.
  - 1e.6 Provide support amenities such as dog waste stations, benches, recycling receptacles, and other standard features commensurate with the scale of the site and level of use.
- 1f. Diversify sports and play experiences across the City.
- 1f.1 Increase the availability of sports fields. Add lighting to existing fields to increase play where appropriate. Collaborate with the school district to develop multi-use sports fields. Consider developing lighted, multi-use fields with synthetic turf that can be lined for several sports to diversify and increase play.

- 1f.2 Integrate more sports courts in parks, including but not limited to futsal, pickleball and basketball, as well as unique courts that respond to new trends, such as badminton, bocce, and outdoor table tennis where appropriate.
  - 1f.3 Continue to provide innovative play opportunities. Provide play experiences that integrate specific landscape and topography of the park. Develop nature play areas made from natural components such as logs, sand, water, mud, boulders, hills, plants, and trees.
  - 1f.4 Provide a universal play area to meet the needs of all residents, including those of varying abilities.
  - 1f.5 Increase adventure play opportunities for older children and teens, adding facilities such as challenge courses, zip lines, rope swings, net climbers, and climbing spires.
  - 1f.6 Provide outdoor and, if feasible, indoor fitness stations, equipment and programs for adults and older adults.
- 1g. Ensure that the City’s parks, greenways, natural areas, trails, and other facilities are safe and accessible to people of varying abilities, ages, and skill levels.
- 1g.1 Ensure new and renovated parks, facilities, and trails meet or exceed the requirements of the Americans with Disabilities Act (ADA).
  - 1g.2 Implement the ADA Transition Plan to prioritize ADA improvements throughout City parks, greenways, natural areas, and shared use paths.
  - 1g.3 Factor in long-term use, programming, and costs before phasing in major ADA improvements for public buildings as noted in the ADA Transition Plan. Review all barriers and first address those that can be resolved through programmatic modifications and maintenance tasks. (See also 4f.)
  - 1g.4 Make City parks welcoming for people with disabilities by providing more information at sites and online about accessible facilities and challenge levels; continue to ensure policies and procedures support inclusion.
  - 1g.5 Address the needs of an aging population and multi-generational families when designing, improving, and maintaining parks facilities, and programs. Consider elements such as slopes, seating arrangements, restrooms, equipment, etc.
  - 1g.6 Provide lighting in community parks, large neighborhood parks, and on high-use trails—where not affecting nearby neighbors—to extend use hours and ensure safety.
  - 1g.7 Provide parks, facilities, and programs that respond to different skill levels, ranging from novice/recreational to advanced/competitive. If these, focus on connecting new and more participants to parks and recreation opportunities.
- 1h. Design parks and facilities to respond to demographic, cultural, and neighborhood needs.
- 1h.1 Create dynamic parks and recreation facilities by adding or incorporating historic and cultural resources, public art, innovative features, diverse landscaping, varied color palettes, and appropriate amenities and furnishings to support social gatherings and user comfort.
  - 1h.2 For new and renovated parks, identify a design theme and use it to guide design choices; connect to the site history, art, or natural resources; meet the needs of the surrounding community; and tell a unique story for each park.
  - 1h.3 Involve residents in site master planning to ensure local needs are met.

- 1h.4 Provide parks, facilities, and services that consider the needs of people of all demographics, including different ages, gender, incomes, race/cultures, abilities, family configuration, and education levels.
- 1h.5 Address the needs of underserved populations across the park system and at key sites. Integrate bilingual signage, culturally specific or expressive art, and elements such as plazas, futsal courts, community gardens, sports fields and group picnic areas.
- 1h.6 Create small group seating/activity areas in parks, by grouping benches and adding small activity/game tables in parks.



**Goal 2: Create a walkable, bikeable, and interconnected city by providing a network of regional and local trails.**

- 2a. Develop trails to connect Tualatin to the regional trail system.
  - 2a.1 Coordinate with Metro and neighboring communities to plan, design, and develop regional trails, such as the Ice Age Tonquin Trail, in Tualatin as proposed.
  - 2a.2 Prioritize regional trails that provide access to natural areas and connect parks, natural areas, and greenways, such as the Tualatin River Greenway Trail and the planned Ice Age Tonquin Trail.
  
- 2b. Develop an interconnected system of on- and off-street bike and pedestrian facilities to connect people to a variety of destinations, including public facilities, nature, and residential, commercial, and industrial areas.
  - 2b.1 Implement the current trails plan. (See Map 1 in Site Recommendations for the location of planned and proposed trails.)
  - 2b.2 Prioritize planned local greenway and creek paths and trails that extend or connect to existing trails and connect existing parks and greenways, such as the Saum Creek, Hedges Creek, and Nyberg Creek Greenway Trails.
  - 2b.3 Prioritize and develop trails that connect the proposed park in the Basalt Creek Concept Plan Area to local trails and the regional trail system.
  - 2b.4 Evaluate opportunities to connect Ibach Park to Helenus Greenway and Blake Street via local trails.
  - 2b.5 Assure shared use pathways and bikeways are developed as land rights and resources are available.
  - 2b.6 Assure that shared used trails are developed in future City planning areas.
  
- 2c. Improve park access and wayfinding for pedestrians and cyclists.
  - 2c.1 Develop park entries and access points for pedestrian and bicyclists where trails connect to parks and greenways. Provide park identification and wayfinding signage, and in larger parks, provide bike racks, seating and restrooms.
  - 2c.2 Provide park directional and distance signage along trails to note the distance to key destinations, including parks, schools, commercial spaces, and major City or public facilities.

2d. Connect residents to the existing Tualatin River Water Trail.

- 2d.1 Increase input/takeout points for canoes and kayaks on the Tualatin River Water Trail.
- 2d.2 Work with partners to provide information online and in other formats to communicate water recreation opportunities and available support amenities for water trail users, such as trailhead amenities and facilities, interpretive features, art, safety, culture, and natural resources.

2e. Design and develop quality trails to enhance the trail experience.

- 2e.1 Develop greenways and trails by implementing adopted policies for the Natural Resource Protection Overlay (NRPO) District, as noted in Section 72 of the City's Development Code.
- 2e.2 Implement trail design and development guidelines and best practices that comply with federal and state bike and pedestrian standards, to guide trail development, access, and use. Follow guidelines related to trail surfacing, lighting, slope, width, seating/resting stations, and adjacencies to natural areas.
- 2e.3 Implement ADA and/or ABA recommendations for trail improvements.
- 2e.4 Consider adding lighting to selected trails corridors to increase commuter and after-hours use and improve trail safety.



**Goal 3: Conserve and restore natural areas to support wildlife, promote ecological functions, and connect residents to nature and the outdoors.**

3a. Identify and protect Tualatin's natural resources.

- 3a.1 Identify, inventory, and assess the condition of habitat and significant natural resources in parks, greenways, and other areas throughout the City.
- 3a.2 Work with partners to strategically connect and protect riparian areas (river and creek corridors), and wetlands to preserve vital ecological functions, improve water quality, and increase biodiversity.
- 3a.3 Balance natural resource protection with access when planning trails through or adjacent to greenways and natural areas.

3b. Ensure natural resources in parks, greenways, and natural areas are maintained and stewarded.

- 3b.1 Provide adequate maintenance funding to achieve established levels of service and best practices in greenways, natural areas, and natural resources in parks.
- 3b.2 Establish a standard of maintenance in all parks, natural areas, and greenways to control invasive species, remove/prune hazardous trees, control river- and stream-bank erosion, minimize wildfire hazards, and promote safe access.
- 3b.3 Identify natural areas that need a higher level of maintenance and/or restoration.

- 3b.4 Create a natural resource management plan for significant natural areas, identifying the tasks, frequencies, staffing, and budget needed to manage and maintain them to established maintenance standards to accomplish a level of good ecological conditions for natural resources management.
  - 3b.5 Limit public access to sensitive natural areas in parks through fencing and other barriers, with informational and interpretive signage to inform residents about the natural resource value of parks.
  - 3b.6 Provide periodic creek clean-ups near parks and along trails.
- 3c. Restore and enhance natural resources in parks, greenways, and natural areas to support wildlife and the ecological function of parks.
- 3c.1 Protect and conserve natural areas and greenways by implementing adopted policies for the Natural Resource Protection Overlay District (NRPO), the Wetlands Protection District, and Floodplain District as noted in Sections 72, 71 and 70 respectively of the City's Development Code.
  - 3c.2 Update the City's plant palette to encourage horticultural diversity in parks for ecological benefits, visual interest and sustainability. Include a variety of carefully selected shrub, grass, succulent, and groundcover species that have unique textures and colors that are best suited for Tualatin's climate, soil, and wildlife. Utilize native and/or climate appropriate plants when possible.
  - 3c.3 Include an invasive removal plan when establishing maintenance standards in natural areas and greenways.
  - 3c.4 Incorporate stormwater management standards from Clean Water Services for green infrastructure elements such as rain gardens, bioswales, permeable pavers, and detention ponds to help reduce flooding, and filter pollutants into the City's Development Code.
  - 3c.5 Implement community forestry strategies and best practices. Maintain healthy, mature trees and increase tree canopy where opportunities exist. Develop a Community Forestry Management Plan for maintaining and managing parkland, street, and community trees canopy.
  - 3c.6 Integrate pollinator corridors along street rights-of-way and pollinator patches in parks and beautification areas where appropriate.
  - 3c.7 Review current street development and municipal code sections and update to current best practices and standards.
  - 3c.8 Seek to acquire contiguous natural areas and connected corridors to create larger habitat areas and wildlife migration routes.
  - 3c.9 Establish and implement an integrated pest management plan.
- 3d. Expand opportunities to experience nature in Tualatin.
- 3d.1 Encourage interaction with nature through the provision of nature trails, natural play areas, community gardens, habitat-viewing areas, and interpretive nature, historic, and art features.
  - 3d.2 Coordinate with schools, to develop outdoor classrooms and community gardens for environmental education in parks, schools and community locations.
  - 3d.3 Add plantings in developed parks to attract birds and butterflies for viewing; incorporate boulder groupings and other niches where insect and plant discovery could occur.

- 3d.4 Develop and maintain parks to support nature programs and events in designated locations, including birding and wildlife viewing, nature play, etc. Avoid high-impact programming in sensitive natural areas.
- 3d.5 Support and partner with organizations and agencies for outdoor education opportunities.
- 3d.6 Market and promote Tualatin as a bird and wildlife viewing destination by designing and building distinct and creative viewing areas in natural areas and greenways to attract tourism.



**Goal 4: Activate parks and facilities through vibrant programs, events, and recreation opportunities for people of different ages, abilities, cultures, and interests.**

- 4a. Provide recreation and library programs in core program areas (noted below) to respond to community needs.
  - 4a.1 Identify and provide services in the core program areas where the Parks & Recreation and Library Departments play a significant role: Arts & Culture; Enrichment & Learning; Health, Wellness & Fitness; Nature Programs; Older Adult & Senior Programs; Social Activities; Special Events; Sports; and Youth Programs.
  - 4a.2 Continue to provide youth programs that include day camps, youth and teen development, and leadership. Assess the need and potential for partnerships to facilitate youth and teen before & after-school recreation programs.
  - 4a.3 Create and redefine programs to support the City’s vision and values, including cultural diversity, inclusiveness, health and wellness, conservation and stewardship, and others.
  - 4a.4 To support core program areas, increase programs, activities, and events in Sports and Nature Programs. Diversify Arts & Culture and Enrichment & Learning programs. (See the objectives below and 5fg.)
  - 4a.5 Increase programs for all demographics and populations, including Hispanic and Latino residents. In the next three to five years, re-evaluate City demographics and revisit whether Cultural Diversity should be added as a core service area. Culturally diverse programming is defined as events, activities, classes, and bilingual programs that celebrate or promote all cultures.
  - 4a.6 Ensure that core area programs are adapted and modified to support all ages, cultures, and abilities, plus provide multi-generational opportunities. Increase programs for teens, young adults, and active adults.
  - 4a.7 Implement specific ADA Transition Plan recommendations related to providing notice about program modifications; ensuring that programs and special events are accessible; ensuring that programs and services offered by other entities at parks and recreation facilities are accessible; and improving information about the accessibility of parks, facilities, trails, programs, and events.
  - 4a.8 Use the tracked information on the numbers of participants annually in each core program area, as well as the numbers and types of programs, activities, classes, and leagues provided or facilitated to support decision-making regarding the numbers and types of programs to provide.

- 4a.9 Determine a mechanism for financial assistance to support program participation for underserved residents in the community.
- 4b. Expand sports programs to support health, fitness, and team building.
  - 4b.1 Provide or partner to provide learn-to-play sports classes and camps to help prepare and connect children to physical activity and local sports leagues.
  - 4b.2 In conjunction with new sports facility development, organize drop-in, learn-to-play, or skill development programs for futsal, pickleball, basketball, and other activities. Consider recreation-oriented competitions (e.g. 3-on-3 tournaments by age group).
  - 4b.3 Offer or expand adult sports leagues (e.g., kickball, softball, dodgeball, pickleball, futsal) to connect to improve the health and fitness of residents and employees.
- 4c. Continue to provide events, social gatherings, and celebrations to connect residents and strengthen community spirit.
  - 4c.1 Ensure there are adequate resources to continue successful programs such as the Pumpkin Regatta, Blender Dash, and Summer on the Commons that support community identity, and that promote Tualatin as a destination place for tourism.
  - 4c.2 Offer community-oriented programs such as movies and concerts in the park at more sites. Identify events appropriate for large neighborhood parks (Atfalati, Ibach, and Jurgens), as well as community parks (Tualatin) and special use sites (Tualatin Commons).
  - 4c.3 Expand nature-oriented events at Brown's Ferry Park and other natural areas and greenways.
  - 4c.4 Increase cultural festivals, art festivals, and Hispanic/Latino events.
  - 4c.5 Support walks, races, markets, fitness challenges, and other healthy lifestyle and fitness programs and events to support health and wellness and enhance tourism.
- 4d. Strengthen and diversify enrichment and learning programs.
  - 4d.1 Maintain coordination between Library staff, Recreation staff, and other organizations and agencies in programming.
  - 4d.2 Bring neighborhood enrichment programs to underserved areas by continuing and expanding makerspace activities at parks, recreation facilities, the Library, and schools. Invest in a Mobile Recreation/Nature Van to bring arts & crafts, music, nature activities, sports, recreation equipment, and staff-led activities to parklands and other community locations. Focus on underserved neighborhood parks, public spaces, and lower-income areas to introduce more youth to activities in core program areas.
  - 4d.3 Support bilingual staff to expand communication, bilingual enrichment, and recreation programs.
  - 4d.4 Continue to explore funding sources and joint investment opportunities with school and industry partners to develop a temporary or permanent makerspace/technology hub. In the long term, integrate these functions into the Library.
  - 4d.5 When needed, update the Library strategic plan to evaluate and enhance programs and services at Tualatin Library.

4e. Increase outdoor and nature programming.

- 4e.1 Support year-round recreation opportunities, outdoor programs by providing, and programming outdoor classrooms and covered pavilions in parks. Consider outdoor fitness and activity, natural history, and other recreation, arts, enrichment, and interpretive programs.
- 4e.2 Expand and make available online, and in other formats, self-guided activities such as the Art Walk, nature walk, self-guided bike tours, river access maps, and nature guides for key parklands.
- 4e.3 Encourage trail-related recreation through walking groups, birding groups, and, in timely response to key trends, activities such as gaming outings.
- 4e.4 Provide programs in Tualatin’s natural areas, greenways, and parks to increase nature programs, interpretive programs, and environmental education where these do not damage significant habitat areas or natural resources.
- 4e.5 Provide a balance of drop-in and programmed opportunities in parks, recreation facilities, the Library, and other City facilities.

4f. Phase in more indoor programming.

- 4f.1 Complete a market analysis, financial feasibility study and master plan for a new community recreation center. Consider programming and revenue-generating opportunities to provide gymnasium/fitness space, indoor track, multi-purpose banquet room, meeting/classrooms, art room, , sound-proof music rooms, dance floor, maker/incubator space, theater/stage, social gathering space, office space for staff, indoor/outdoor programs spaces and support amenities, such as restrooms, locker rooms, storage, and parking. Consider replacing three or four existing Tualatin Community Park buildings when developed. Include indoor/outdoor programming and event space.
- 4f.2 Establish a makerspace in the new community recreation center or the Library, as per the findings of the market analysis and financial feasibility study.
- 4f.3 Continue successful programming of the Library. In the short term, explore opportunities to offer Library and recreation programs in other locations, including outdoors in parks or indoors in schools.
- 4f.4 Should a City Hall or municipal center be built in the future, convert the existing City offices for Library or recreation program use (or replace with the community recreation center).
- 4f.5 Expand physical activity and evidence based lifelong learning programs for adults at the Pohl Center.
- 4f.6 Continue the current successful programming of the Juanita Pohl Center. If an indoor recreation and community center is developed, expand and/or include programming and space for older adults and seniors.
- 4f.7 Continue to rely on the Van Raden Community Center in the short term for youth programs, considering supervision and safety considerations in a building not designed or well suited for some programs. Consider demolition or repurposing this building for non-recreation uses, if a new recreation and community center is to be developed. Be aware of the deed restrictions for use and programs in this facility.
- 4f.8 Avoid or carefully consider significant remodels/upgrades to existing community centers and park buildings that are not designed for programs.



- Factor in long-term building use, programs, and costs before phasing in ADA improvements noted in the Transition Plan.
- 4f.9 Consider options to replace the Brown’s Ferry Park “community center” house with a nature-oriented event space suitable for indoor/outdoor nature programs, or weddings and other rentals.
  - 4f.10 Acquire land and develop a new recreation/community center that is centrally located with adequate parking and accessible to residents by roads, trails, bike routes, and transit, and able to accommodate indoor/outdoor programmed uses.
  - 4f.11 Pending the findings of the financial feasibility study and market analysis, provide full service indoor recreation programs to expand and enhance the needs and desires of the community.



**Goal 5: Support public arts through programs, parks, and public spaces that reflect Tualatin’s identity, heritage, history, and expressive character.**

- 5a. Recognize and expand the role of art in public spaces to define a sense of place, reflect the character and identity of Tualatin and contribute to the happiness, fulfillment and well-being of the community.
  - 5a.1 Adopt all objectives and recommendations pertaining to public art in the Parks and Recreation Master Plan as the Tualatin Public Arts Plan--providing an update every five years.
  - 5a.2 Provide art and support art experiences that support the following values: creativity, enjoyment, quality of life, community vibrancy, artistic/expressive opportunities, and sense of place.
  - 5a.3 Diversify art and art experiences in parks and recreation facilities, including but not limited to, interactive art, educational/interpretive art, art installation and sculptures, visual/display arts, media art, and art programs/events including expressive and performing arts.
  - 5a.4 Include artists and TAAC representatives on parks, trails and facility design teams to provide artistic and cultural perspective and contribute creative ideas that support the site’s identity or theme, where appropriate.
    - When designing facilities, such as but not limited to trails, parks, buildings and other key features, encourage artists to work with maintenance and recreation staff to ensure functionality, determine where maintenance efficiencies can be incorporated, and identify where art can be interactive to support the park theme or play environment.
    - Involve the Tualatin Arts Advisory Committee on park and facilities design development and site master plan process.
  - 5a.5 Consider decorative and artistic elements in parks, greenways and trails such as creative bicycle racks and benches, unique lampposts, decorative sidewalk paving, wall etchings and mosaics, artistic planters, wide sidewalk promenades, interpretive and educational features, murals, monuments, and modern media in the design development phase of a site.
  - 5a.6 Explore ways to integrate art into City managed facilities as a branding strategy.
    - Identify locations for strategic public art placements.

- Incorporate wayfinding signage or art installations at City entrances and utility box wraps at key road intersections.
  - Consider strategically placed murals on long empty building facades in public facilities (parks, public buildings, public spaces), to activate the area.
- 5a.7 Following adoption of the Tualatin Public Arts Plan, develop a public art implementation strategy with a focus on private-public partnerships to support public art in commercial and industrial spaces throughout the City.
- 5a.8 Encourage understanding of different cultures through artwork and provide opportunities for information sharing through all forms of display, performing, expressive and visual art (installations, physical art pieces, functional art pieces, pop up activities, programs, events) to facilitate better diversity and inclusion among different demographics.
- 5b. Emphasize interactive art in parks and facilities.
- 5b.1 Integrate creative and innovative play and educational pieces in play areas that encourage people to create, play, interact with, and explore art, music, nature, and history. This includes but is not limited to, climbable sculptures, interactive spray or musical fountains, sensory gardens, outdoor xylophones and drums, bioswales with stackable rocks (cairns) and other natural play features or structures, decorated book share boxes (little libraries), play areas with movable parts, and other artistic park elements.
- 5b.2 Continue to develop new and update existing thematic play areas, such as the Ibach Park playground, for all age groups, including tiny tots.
- 5b.3 Include etchings of poetry, dance steps, relevant facts or famous quotations or other art elements in selected sidewalks and staircases.
- 5b.4 Provide versatile spaces using strategically placed infrastructure (such as small platforms) that allow for “pop-up” performances, with less preparation and effort by staff.
- 5c. Provide educational art displays and interpretive features that promote Tualatin’s history, culture, and character.
- 5c.1 Incorporate art in parks and public spaces that reflects or calls attention to Tualatin’s natural and cultural history through educational or interpretive elements.
- 5c.2 Partner with culturally relevant organizations such as the Confederated Tribes of Grand Ronde, Tualatin Historical Society and the Ice Age Floods Institute, to support interpretive and educational art.
- 5c.3 Selectively provide interpretive signage and kiosks in parks to provide information about local history, natural resources, etc. Consider temporary signs that link people to websites with additional information.
- 5c.4 Include plant/tree identification plaques in high traffic areas to educate about native and non-native flora and fauna.
- 5c.5 Continue to promote the region’s geologic history, Native American history, and Tualatin River through strategically placed art and interpretive elements.
- 5c.6 Encourage the development of sidewalk or traditional building façade murals on public and/or commercial buildings. Collaborate with partners such as the Tualatin Riverkeepers, Tualatin Historical Society, and Tualatin Arts Advisory Committee.

- 5c.7 Display art that reflects community demographics, including the culture of Hispanic/Latino residents and other groups.
  - 5c.8 Move beyond these existing themes to creative expressions of Tualatin's character and identity. Encourage both realistic and abstract or expressive representations of Tualatin's identity.
- 5d. Enhance the City's visual environment by encouraging the display of visual arts in public spaces.
- 5d.1 Expand the provision of sculptures and art installation on an opportunity and site basis. Integrate non-educational, non-interpretive art where appropriate to make a park or facility more playful, colorful, attractive, or interesting.
  - 5d.2 Identify opportunities to display on a rotating basis the City's Visual Chronicle, the collection of art work that visually depicts how Tualatin has changed over the years. Consider expanding the rotation of artwork into coffee shops, commercial areas, and schools for temporary or permanent displays.
  - 5d.3 Continue to support visual arts in heavily used spaces such as the Tualatin Library and the Juanita Pohl Center to encourage a sense of place for patrons.
  - 5d.4 Continue to inventory and catalog art pieces that the City acquires.
- 5e. Invest in facilities that support art and arts programming.
- 5e.1 Work with the Library to combine the City's interest in creating a maker space/incubator hub with an emphasis on art technology.
  - 5e.2 Support investment in art technology at the Library or community recreation center. Consider computer animation, graphics, website development, music recording, etc.
  - 5e.3 Ensure that arts, performing arts and cultural programming spaces are incorporated into a new recreation/community center. Consider dedicated art classrooms, stage/theater, music/dance rooms, display space, and necessary equipment such as but not limited to a kiln, pottery wheels, computers, video and audio recording equipment, etc.
  - 5e.4 Integrate art into useable features and displays in a proposed recreation/community center.
  - 5e.5 Evaluate options to provide permanent and/or additional outdoor performance space, such as a small amphitheater or multiuse fountain/plaza/performance space.
- 5f. Expand opportunities to participate in experiential art.
- 5f.1 Involve the TAAC and staff in defining the types of experiential, immersive or performing art installations, events and programs to support. Identify and implement pilot projects to test new opportunities each year.
  - 5f.2 Activate parks with temporary art projects or installations that encourage play and draw attention to lesser-known sites. These can range from chalk drawings to temporary interactive and creative play features, to temporary sculptures that appear in different places around town.
  - 5f.3 Encourage informal "mini-art" performances located in parks or other under-utilized public spaces to bring more performing arts viewing opportunities to residents.

5g. Diversify Arts & Culture programs and as a core recreation service area events to promote and create opportunities for creativity.

- 5g.1 Provide and track arts programming and participation in the major service categories: fine arts, cultural arts, educational arts, literary arts, and media arts, and expressive arts.
- 5g.2 Continue the City’s emphasis on cultural programming, such as ArtSplash Show and Sale and Summer on the Commons, but also expand other types of art classes, events, and activities.
- 5g.3 Continue to support community events such as ArtSplash as a destination for artists and spectators in the region and abroad.
- 5g.4 Expand Science, Technology, Engineering, Arts and Mathematics (STEAM) programs.
- 5g.5 Develop art programs for youth to increase participation, encourage art appreciation and creativity and to develop young artists.
  - Incorporate artists and art into youth recreation programming, partnering with schools, the Youth Advisory Council, and other organizations.
  - Explore ways to encourage young artists to participate in the City’s arts and cultural programs.
  - Partner with community organizations such as Tualatin RiverKeepers and Willowbrook, and Mask and Mirror Community Theatre to develop arts education programs for youth.
- 5g.6 Expand art and STEAM programs for adults to provide a creative outlet for expression and reflection.
  - Promote adult and intergenerational art programs that encourage art and music appreciation as well as creativity and participation.
  - Coordinate with JPC staff and the Aging Adults Advisory Group to identify and increase arts programs for older adults and seniors.
  - Organize community artwalk or artcrawl events to showcase different art, food and sensory experiences.
  - Consider options such as hosting hackathons, maker space contests, or poetry slams to engage people of all ages.

5h. Market, promote, and fund art and art programs.

- 5h.1 Market and promote Tualatin’s arts programming and events through social media to raise awareness among residents and visitors.
- 5h.2 Initiate an annual photo contest of Tualatin’s parks and natural areas.
- 5h.3 Partner with schools to encourage student development of videos highlighting positive activities or behaviors in Tualatin parks, recreation facilities, and natural areas. (See example: <https://www.youtube.com/watch?v=IFB3VFQpcp8>)
- 5h.4 Promote the Tualatin ArtWalk with local businesses and companies as part of their employee health and fitness program.
- 5h.5 Create a downloadable or interactive map of Tualatin’s ArtWalk route.
- 5h.6 Encourage businesses and commercial entities to display or incorporate art in their facilities and/or landscaping.
- 5h.7 Recruit artists to serve as instructors or ambassadors to Tualatin’s art programs.
  - Host contests to identify an honorary poet laureate annually for the City.

- Consider a rotating “artist-in-residence” for the community recreation centers. This person would teach art classes and display his or her current work.
- 5h.8 Consider funding possibilities to support art resources and programming.
  - Adopt a percent for arts ordinance for new private development.
  - Consider incentives for new developments that incorporate art into the concept or design and development stages.
  - Explore opportunities to create an arts endowment to provide long-term, stable funding for art-related venues and programs.
  - Explore arts funding and grants to support STEAM programs, incubator/maker spaces as well as expressive art opportunities.
- 5h.9 Work with various local and regional partners to expand art opportunities.
  - Invite potential partners to TAAC meetings to discuss and implement opportunities for collaborative art programs, classes and events. Involve the School District, Library, Mask and Mirrors, Willowbrook, Heritage Cetner, Tualatin Valley Creates and others.
  - Partner with the Tualatin Chamber of Commerce to encourage visual arts or installations and performing arts in commercial spaces.
  - Work with organizations like Tualatin Valley Creates to understand resources and funding available for arts appreciation and art as an economic development opportunity.
  - Work closely with the City’s economic development division to create strategies that advance public arts as a tourism generating sector.



**Goal 6: Promote Tualatin’s unique identity, economic vitality, and tourism through parks, natural resources, historic preservation, events, programs, and placemaking.**

- 6a. Provide and design parks and facilities to promote a sense of place.
  - 6a.1 Use art and facility design to reflect the City’s heritage, history, landscape, interests, culture, character, and people. (See 1h and 5a.)
  - 6a.2 Preserve, conserve, and provide access to designated historic resources and significant natural resources that contribute to Tualatin’s sense of place.
  - 6a.3 Develop a tourism strategy that strikes a balance between visitation, economic impact, natural resource conservation, and livability.
  - 6a.4 Ensure tourism goals are aligned with Washington and Clackamas County’s rural tourism plan.
  - 6a.5 Market and promote the City as a tourist destination, emphasizing the City’s parks, trails, and programs, between Portland Metro and Willamette Valley wine country.
- 6b. Improve City center parks as community gathering hubs.
  - 6b.1 Update the site master plan for Tualatin Community Park to improve access, reduce user conflicts, better meet recreation and indoor facility needs, and serve as a focus point for community activities.

- 6b.2 Strengthen connections between Tualatin Community Park, the Library, and Tualatin Commons to serve as a community and tourist focus point for civic life, recreation, public art, and cultural opportunities.
  - 6b.3 Update the fountain and plaza at Tualatin Commons to become a more versatile play and programming space.
  - 6b.4 Complete a market analysis, financial feasibility study, and master plan for a new recreation/community center to serve as a civic and community gathering space. (See 4f.)
- 6c. Increase connections to the Tualatin River.
- 6c.1 Preserve the scenic value of the Tualatin River by expanding the greenway and riverfront trail along the riverbank within the city.
  - 6c.2 Improve and increase water access points, including boat launches and floating docks to support recreation, including boating and fishing.
  - 6c.3 Identify and improve views of the Tualatin River, creating overlooks for water viewing.
  - 6c.4 Encourage art and interpretive elements to reflect and promote connections to the river.
  - 6c.5 Continue partnerships to provide rental non-motorized boats at Brown's Ferry Park.
  - 6c.6 Continue partnerships with Tualatin Riverkeepers to ensure clean waters, steward the riparian corridor, and educate residents, visitors, and youth about local ecological traditions through interactive, engaging and creative methods.
- 6d. Communicate the benefits provided by Tualatin's parks, natural areas, trails, art and programs.
- 6d.1 Continue to promote Tualatin's park and recreation brand: Accessible, inclusive, vibrant parks and recreation.
  - 6d.2 Work with the TAAC to define Tualatin's art brand through the development and use of iconic images, media and social media.
  - 6d.3 Collect data to illustrate how City parks and programs are accessible and inclusive to people of different abilities, ages, and cultures.
  - 6d.4 Build on current promotions to increase awareness of the variety and diversity of park and recreation opportunities in Tualatin. Use traditional media, social media and art that is bilingual to communicate more broadly to residents.
  - 6d.5 Promote and provide unique events, parkland and art opportunities to support tourism and visitors from outside the city. Work with local businesses to promote local services during events to encourage people to stay in the City longer.
  - 6d.6 Provide elected officials and the City staff with talking points on the ways that parks and recreation, the Library, and public art attract residents and businesses and support economic development and tourism.
- 6e. Engage volunteers, partners, stakeholders, and local businesses to support art, recreation and tourism.
- 6e.1 Continue to collaborate and cultivate partnerships to increase Department influence and support. Work with the School District, sports leagues, and contract program providers to enhance recreation options.

- 6e.2 Increase outreach to engage volunteers in programs and events, building on the Library volunteer program, the Park Maintenance volunteer program, and Youth Advisory Council and program. Recruit, train, recognize, and reward volunteers.
- 6e.3 Involve residents, local artists, the Tualatin Arts Advisory Committee, and partners such as Historical Society and the Confederated Tribes of Grand Ronde in the planning and design of parkland and major recreation facilities.
- 6e.4 Reach out to businesses to cultivate sponsorships and partnerships for parks, programs, facilities and art.
- 6e.5 Explore opportunities to leverage the existing Washington County and Clackamas County Rural Tourism Studies for funding and strategic policy alignment.



**Goal 7: Manage, administer, and maintain quality parks, facilities, and programs through outstanding customer service, stewardship, and sustainable practices.**

- 7a. Maintain and operate parks effectively to support quality use.
  - 7a.1 Implement Master Plan goals, objectives, strategies, and recommendations relating to asset maintenance, replacement, reinvestment, and stewardship. (See 1d.)
  - 7a.2 Ensure that routine and preventative maintenance services are adequately funded in parklands to ensure park safety, make parks more attractive, provide a quality user experience, and avoid a park maintenance backlog.
  - 7a.3 Invest additional funds in natural resource stewardship, and protect cultural, historical, and natural resources in parks.
  - 7a.4 Improve maintenance efficiencies. Consider integrating native and/or climate appropriate plants and avoid difficult-to-maintain amenities that do not function well.
  - 7a.5 Invest in technology to conserve resources and reduce utility and water costs.
  - 7a.6 Continue City landscaping maintenance and the street tree program to design standards, applying the maintenance expertise of Parks staff to take care of City trees and landscaping around City buildings.
  - 7a.7 Incorporate best practices in park management and sustainability practices to ensure the wise use of resources.
  
- 7b. Adopt design and development guidelines to guide park and facility maintenance, management, renovation, and development.
  - 7b.1 Update park and trail design and development guidelines. Include federal and state bike and pedestrian design standards for on- and off-road development in and adjacent to greenways and natural areas.
  - 7b.2 Develop the City's maintenance management plan.
  - 7b.3 Develop a natural resource management plan for significant natural areas, identifying the tasks, frequencies, staffing, and budget needed to manage and maintain them. (See 3b.)
  - 7b.4 Ensure that new standards and guidelines are incorporated into the City's Development and Municipal Code updates.

7c. Be fiscally and financially prudent in funding the park and recreation needs of the Tualatin community.

- 7c.1 Coordinate with City leaders to identify and potentially expand the Department's resources to support parkland and facilities, park and natural area maintenance and restoration, recreation, and public arts.
- 7c.2 Periodically review and revise the Department's fees and charges philosophy and cost recovery expectations for programs and rental facilities.
- 7c.3 Expand staff capacity, as resources allow, for grant writing, grant management, and the solicitation of sponsorships and donations.
- 7c.4 Diversify funding sources, considering a bond measure, operational levies, utility fee, and other alternatives to fund capital projects and operations.
- 7c.5 Set aside funding for capital reinvestment to remove, renovate or replace aging and worn facilities at the end of their lifecycle.
- 7c.6 Implement the System Development Charge (SDC) methodology to support park, greenway, and trail development in residential, commercial, and industrial areas in accordance with state law.
- 7c.7 Leverage and expand resources by collaborating with partners, stakeholders, and volunteers. (See 6e.)
- 7c.8 Develop and maintain relationships with targeted public and private organizations and entities to support City objectives and standards for providing recreation opportunities.

7d. Continue the provision of high quality, responsive customer service.

- 7d.1 Provide an online contact option on the Parks and Recreation home page for residents to provide feedback to City staff.
- 7d.2 Designate department staff as the contact person for people who have questions or need immediate information.
- 7d.3 Continue to provide high-quality services and support friendly, welcoming, and inclusive recreation environments.
- 7d.4 Update rules, policies, and programs as noted in the ADA Transition Plan to enhance customer service.
- 7d.5 Improve and assess locations to add comfort amenities, such as trash receptacles, restrooms, shade, picnic tables, barbecues, drinking fountains, park lighting, benches, and doggie bag stations.
- 7d.6 Provide more frequent park janitorial services, trash removal, and clean-up in high-use parks or during peak use times.
- 7d.7 Continue close coordination with Tualatin Police to patrol parks and connect residents to options to discuss park safety concerns.

7e. Improve information, communication and relationships with park users, city residents, and employees.

- 7e.1 Conduct satisfaction surveys and post-program follow-up to track and measure park use, satisfaction, and the benefits that City parks and programs provide.
- 7e.2 Implement ADA Transition Plan policy recommendations related to communication, accessible and inclusive documentation, and the provision of information on accessible facilities and trails to provide more inclusive community services.



- 7e.3 Continually update website pages, signage and communication materials.  
Provide bilingual information , where warranted.
- 7e.4 Reach out to employees and businesses to identify employee-oriented program opportunities.



# PARKS & RECREATION MASTER PLAN

## SITE RECOMMENDATIONS (REVISED DRAFT)

As a companion document to systemwide recommendations, the Master Plan provides additional guidance for recommended projects at key sites. This includes existing and proposed sites, organized by category as noted below. Recommendations are also provided for key facilities where sites have not yet been identified, as well as for public art.

- Existing parks and facilities
- Existing natural parks and areas
- Existing greenways and shared use paths
- Proposed new parks
- Proposed facilities
- Proposed natural parks and areas
- Proposed greenways and shared use paths
- Public art

Site recommendations identify a general direction for site improvements, followed by more specific opportunities that should be considered when updating sites. Following each section heading, graphics are presented for each goal that is advanced by implementing these recommendations. Note: recommendations for all sites are summarized in a matrix under a separate cover.

### Existing Parks and Facilities



#### ATFALATI PARK

**Atfalati Park is a 13-acre large neighborhood park that provides both active and passive recreation opportunities. Site recommendations primarily focus on enhancing recreation opportunities and restoring natural resources. Focused efforts should improve and expand**

**the gathering and play areas, add shade trees, add sport and challenge elements as space allows, and better integrate/restore Saum Creek frontage.**

- Fully implement the current site master plan, including adding a second parking lot at SW 65<sup>th</sup> Avenue, a small picnic shelter, a large group picnic shelter with shade and moveable tables for programming and group events, and an adjacent nature play area that could potentially include shade sails
- Work with the Diversity Task Force and other local organizations to understand the needs of nearby Hispanic/Latino neighbors and incorporate into maintenance and design site plans
- Add pedestrian crosswalk as development grows along SW 65<sup>th</sup> Avenue
- Add a new water play or spray feature
- Convert lower soccer fields to sand base with subsurface drainage, providing for one youth and one adult size soccer field
- Add futsal court
- Add site lighting
- Resurface basketball court
- Renovate existing tennis court for multi-use as pickleball/tennis
- Add historical/interpretive signs specific to the site
- Add adventure play elements for teens (see New Facilities)
- Stabilize banks of Saum Creek with native vegetation

### ***IBACH PARK***

**Ibach Park is a 20-acre large neighborhood park surrounded by single-family homes. The site supports sports, picnicking, recreation, and play. It includes a unique play area that speaks to the City's prehistoric, American Indian, and pioneer historic eras. The park also connects to an adjacent greenway and trail. Site recommendations for Ibach Park primarily focus on enhancement projects, natural area restoration, and connections.**

- Fully implement site master plan
- Renovate the play area, incorporating interactive art, removing the sand play area, and consider the addition of shade sails
- Carry the prehistoric/historic theme and art into other site elements when replaced or added
- Add historical/interpretive signs specific to the site
- Design and construct proposed boardwalk and bridge over Hedges Creek to connect to existing sidewalks and trails
- Connect existing concrete sidewalk to the Hedges Creek trail with a new proposed path
- Install trail drainage
- Consider adding site and/or field lighting to increase hours of play
- Expand teen zone area, adding selected adventure play elements for teens (see New Facilities)
- Add shade trees throughout
- Renovate the parking lot
- Remove the fence on the west side of the park
- Stabilize banks of Hedges Creek with native vegetation
- Work with the Youth Advisory Council, Aging Task Force, Diversity Task Force and the recreation staff to add new program uses to lawn areas

## *JURGENS PARK*

**Jurgens Park is a 15.5-acre large neighborhood park that serves as a center for neighborhood activity and team sports in northwest Tualatin. The site offers thematic and open play opportunities, gathering areas, and access to the Tualatin River. Site recommendations for Jurgens Park focus on enhancing the site to introduce new uses and restoring/stewarding natural areas around the pond and along the river.**

- Create and implement a site master plan with a public involvement process, specifically focusing on the north end of the park but including the entire site to apply a consistent design theme. Consider the following:
  - Add a parking area at north end of park closer to the dock to ease effort of carrying kayaks to water
  - Add pedestrian crosswalks as development grows on adjacent parcels
  - Add a new water play or spray feature; add a tiny tots play area (ages 0-2); renovate existing playground equipment and safety surfacing
  - Add a rinse station at existing sand and water play area
  - Install sand base field with drainage and irrigation on planned field area between the wetlands pond and river
  - Add large shelter at northeast corner of ballfield
  - Consider site and/or field lighting to increase hours of use and play
  - Add small picnic shelter and restroom at north end of park
  - Add wood deck observation area along Tualatin River
  - Add historical/interpretive signs specific to the site
  - Consider adding an off-leash dog park (fenced or buffered from habitat areas and surrounding uses)
  - Consider adding community gardens
  - Consider adding disc golf Consider a passive use area around the pond for respite, exploration and art and nature appreciation that includes native plantings, grouped and individual seating, interpretive and thematic art, pollinator patches, display gardens, integrated nature play elements and spaces, and viewpoints
  - Replace concrete planters
- Stabilize banks of Tualatin River with native vegetation
- Add subsurface drainage and irrigation to north field and convert to four youth soccer fields
- Consider replacing lawn areas with no-mow natives to reduce maintenance
- Connect this site to the Tualatin River Greenway trail, adding wayfinding and distance signage to different destinations

## *LAFKY PARK*

**Lafky Park is a 2-acre small neighborhood park located in central Tualatin that provides local gathering and play opportunities. Site recommendations for Lafky Park focus on minor enhancements to improve site function, expand walking opportunities, and extend the lifespan of site infrastructure.**

- Add an on-street walking loop on Siletz, Willapa, and Ochoco
- Update park irrigation and drainage system
- Replace amenities and facilities at end of lifecycle, considering adjustable basketball hoops for youth and family play
- Add a picnic shelter

### **STONERIDGE PARK**

**Stoneridge Park is a quarter-acre park that provides shaded play space in a residential neighborhood in east Tualatin. Site recommendations for Stoneridge Park include making the space more relevant to the surrounding community, providing family gathering space, maintaining safety and sightlines, and activating the site to connect nearby neighbors, families, and children to the park.**

- Work with a community-based organization and the Diversity Task Force to conduct a bilingual design process with nearby neighbors to design and implement a Latino community-focused “parque” or plaza. Consider the following:
  - Replace the play equipment and surfacing with thematic play elements consistent with the site concept
  - Add raised community garden beds (if enough sunshine)
  - Add seating, tables, or a picnic shelter to support family gatherings
  - Provide adjacent residential uses more privacy from the park
- Continue coordinating with the community-based organization and Library Department on programming and stewarding the site to create a new use pattern

### **TUALATIN COMMONS**

**Tualatin Commons is located in the heart of city and is the result of a public/private partnership that began in the early 1990s, with a major redevelopment of downtown. The Commons will continue to be the city’s prime urban gathering spot for city celebrations and special events. Site recommendations for the site focus on overall reinvestment, enhancing the fountain, and maintaining to the original design standards.**

- Aerate the lake or improve water circulation to upgrade water quality
- Renovate the surface, system, plumbing and spray heads at fountain (also consider its outright replacement)
- Renovate, improve and install additional restrooms and storage space. Add functional and interactive artwork or other interpretive material
- Consider addition of non-slip surfacing to improve pedestrian safety

### **TUALATIN COMMONS PARK**

**Tualatin Commons Park is a small gateway located near Interstate 5 along Nyberg Road. The park provides art and passive opportunities. Site recommendations for Tualatin Commons Park focus on maintenance, safety, and adding new touches that enhance its function as a visible gateway.**

- Improve sight lines into park
- Install decorative lighting in trees
- Improve site drainage
- Add functional and interactive artwork or sculpture

### *TUALATIN COMMUNITY PARK*

**Tualatin Community Park is the City’s first and largest park located at the heart of the city on the Tualatin River below the Southern Pacific Railroad trestle. Site recommendations for Tualatin Community Park focus on improving access and recreation opportunities through the potential re-siting of existing facilities and infrastructure. Improvements will address the future use of existing site buildings and facilities to maintain the park’s role as an indoor and outdoor gathering hub for the city. Natural area restoration and associated maintenance activities along the river are another major emphasis of the site recommendations.**

- Update and implement master plan to enhance the role of the park as the heart of the Tualatin community. Consider the following:
  - Identify a design theme for the park
  - Improve entry, circulation and parking to address vehicular and pedestrian access into and within park
  - Consider renovation of the Juanita Pohl Center and the consolidation of buildings into a multigenerational community recreation center (see Community Recreation Center recommendations in the New Facilities section). If a community recreation center is not viable, following the recreation center business and operations plan/site master plan recommendations regarding the renovation of existing special use buildings
  - Leverage indoor/outdoor programming opportunities associated with building improvements. Consider a small outdoor amphitheater in association with indoor performance and program space; consider low impact activities such as bocce and shuffleboard with shaded group seating adjacent to the Juanita Pohl Center
  - Resolve the use conflict at the ballfield, rail trestle, river, adjacent uses, and proximity to parking with possible relocation of field
  - Replace field lighting with LEDs to minimize maintenance and increase hours of play, and add field lights to the north field next to the dog park
  - Consider replacing horseshoes with bocce ball or another low-impact activity with a similar footprint
  - Renovate and update skate park features
  - Re-stripe existing tennis court for multi-use as pickleball/tennis
  - Expand and replace the main picnic shelter and barbeque facilities and add electrical outlets at the Trestle Shelter. Improve site drainage and add a restroom at the dog park
  - Add outdoor exercise equipment and fitness features
  - Stabilize banks of Tualatin River with native vegetation; steward natural resources on site
  - Redesign hydrozones, irrigation, and subsurface drainage system including new controller, heads, etc.
  - Connect this site to the Tualatin River Greenway trail, adding additional wayfinding and distance signage to different destinations

## Existing Natural Parks & Areas



### *BROWN'S FERRY PARK*

**Brown's Ferry Park is a 28.33-acre natural area park located on the Tualatin River in east Tualatin. The park provides river access and passive recreation such as walking, picnicking, and wildlife viewing. Seasonally, the park provides kayak rentals and a summer art program. Site recommendations for Brown's Ferry Park are geared towards overall enhancement and focused investment to better connect residents to nature, the river, and local history.**

- Redevelop portions of Brown's Ferry Park to better facilitate arts, natural and cultural history, and nature programs and events
  - Terrace and improve access to the outdoor amphitheater
  - Renovate the barn to create an event space/pavilion for group activities and public use
  - Add a group picnic shelter
  - Build an outdoor classroom near the pond.
  - Install amphitheater
  - Designate or create a nature exploration area that can be programmed for environmental education and interpretation or support drop-in activities such as fort-building, digging, planting, etc.
  - Add interpretive elements and identification signage, calling attention to plants and nest boxes for wood ducks and bats
  - Conduct a business plan and identify options for renovating the existing Community Center (house) and improving accessibility and function in conjunction with planning a multigenerational community recreation center (see Community Recreation Center recommendations in the New Facilities section). Consider this site as a reservable wedding/small event venue with opportunities for arts, cultural, and nature programming.
  - Consider interpretive features at Community Center (house)
  - Consider Willowbrook parking impacts and trail connection in park site planning
- Fully implement the site master plan to include phased prairie restoration at two locations near pond with partner organization
- Stabilize banks of Tualatin River and Nyberg Creek with native vegetation
- Replace lawn areas with no-mow natives to reduce maintenance

### *LITTLE WOODROSE NATURE PARK*

**Little Woodrose Nature Park is a 6.55-acre natural area located in central Tualatin. The vision for Little Woodrose Nature Park aims to provide surrounding residential uses access to nature, shade, trail opportunities, and mature vegetation. Site recommendations for Little**

**Woodrose Nature Park focus on stewardship to address deferred maintenance and natural area restoration and associated maintenance activities.**

- Plant site with native vegetation
- Rebuild trail, entry and stairways throughout the park and entryways
- Improve overall ADA access as part of all trail improvements
- Provide safety lighting

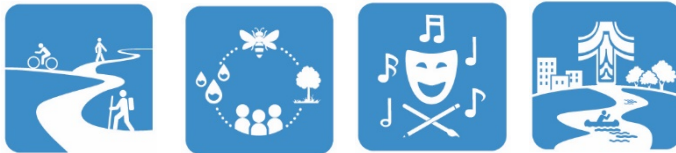
**OTHER NATURAL AREAS**

**Tualatin’s natural areas provide a range of experience for users to interact with the City’s waterways, forests, wetlands, and wildlife. Site recommendations focus on interpretive enhancement, stewardship, and natural area restoration and associated maintenance activities.**

*Other natural areas include Hedges Creek Wetlands Protection District, Hervin Grove Natural Area, Johnnie and William Koller Wetland Park, Saarinen Wayside Park, Sequoia Ridge Natural Area, Sweek Ponds Natural Area, Sweek Woods Natural Area, and Victoria Woods Natural Area.*

- Monitor and repair creek and river erosion issues
- Fully implement site master plans, improving nature trails and wetland trails
- Add interpretive information, viewpoints and habitat viewing areas, particularly where trails/pathways meet, to highlight local geography, natural features, and the early history of site (ex: Lake Missoula flood)
- Improve natural resource stewardship and restoration as per systemwide recommendations
- Provide additional access to Johnnie and William Koller Wetland Park

**Existing Greenways and Shared Use Paths**



**Tualatin’s trails and greenways support both local and regional trail connections, including land and water trails. Recommendations focus on completing trails, developing trailheads and adding recreation amenities and facilities to enhance site use.**

- Develop or extend trails in existing greenways and trail corridors as planned
- Maintain current boat access to the Tualatin River Trail at Brown’s Ferry Park, Tualatin Community Park, Jurgens Park, and Hazelbrook Road at Hwy 99
- Add lighting, seating, dog waste stations, trash receptacles, viewpoints, interpretative, and interactive art in appropriate trail locations throughout the trail system
- Provide trailheads with a range of amenities at large neighborhood and community parks that connect to trails (restrooms, parking, seating, bike racks, water fountains, directional signage)



## Proposed Parks



### *JURGENS PARK ADDITION*

**Site recommendations for Jurgens Park include expanding the park by acquiring an adjacent space to introduce new uses.**

- Acquire adjacent property as available
- Master plan and develop this site in conjunction with the existing park

### *TUALATIN COMMUNITY PARK ADDITION*

**Tualatin Community Park is the City's largest park located at the heart of the city on the Tualatin River. The City should take advantage of opportunities to acquire adjacent land that would improve park access and site use.**

- Acquire additional land (if the opportunity exists) to enhance the role of the park as the heart of the Tualatin community
- Master plan and develop this site in conjunction with the existing park

### *BASALT CREEK PARK*

**A new large neighborhood or community park is proposed for the Basalt Creek Concept Plan Area in south Tualatin to serve residents and employees. Prior to acquisition, opportunities should be evaluated to acquire additional land to support community-wide recreation needs and protect natural resources in the Basalt Creek Canyon. A larger park in the Basalt Creek Concept Plan area would help address traffic congestion by developing the City's second community park, connected to the local and regional trail system, providing tourism attractions and space for community events, large and small group gatherings, sports (fields or a sports complex), as well as other active and passive recreation uses.**

- Acquire 10-20+ acres of park space through an area master plan process
- Acquire additional land for greenways and natural parks to support planned trail connectivity and protect creek canyon habitat and natural resources
- Master Plan and develop park site as a community park to meet neighborhood, employee and community needs
- Identify a site theme and park elements. Incorporate interactive, interpretive, and thematic art elements to support site character, with the collaboration and involvement of residents
- Consider the following:

- A destination and/or universal play area, with water play features
- Sports fields (see New Facilities)
- Pickleball sports court complex (lighted)
- Other lighted sports courts (futsal, basketball, tennis)
- Game and activity/challenge areas
- A small indoor recreation site
- Picnic and group gathering shelters with seating
- Event space and amphitheater-style gathering area for events
- Dog park or dog run
- Disc golf
- Looped walking trail with lighting
- Trailhead
- Nature viewpoints
- Other outdoor facilities consistent with plan recommendations

***EAST TUALATIN / BRIDGEPORT ELEMENTARY PARTNERSHIP***

**Residents in east Tualatin lack access to a nearby neighborhood park. The City should explore a partnership or joint-use agreement with the Tigard-Tualatin School District for the use and/or improvement of recreation facilities of Bridgeport Elementary. The partnership would expand the range of park lands available in east Tualatin, which is now limited to greenways and natural areas.**

- Pursue a school partnership with Bridgeport Elementary to formalize the joint use of the outdoor play areas, lawn, sports field, basketball courts, and track during out-of-school hours
- Add heritage and cultural programming for Hispanic/Latino community in partnership with Bridgeport Elementary
- Identify options to provide jointly-funded facilities at this site to expand recreation options

***PONY RIDGE / HERITAGE PINES PARTNERSHIP***

**Residents in the Pony Ridge area of north Tualatin lack access to a nearby neighborhood park. To meet these needs, the City of Tualatin should continue to develop the Tualatin River Greenway trail to connect residents to Metro’s planned Heritage Pines Natural Area, just west of the City. The City may consider a partnership with Metro to add elements to the Heritage Pines Natural Area to meet resident needs.**

- Develop and connect the Ice Age Tonquin Trail in northwest Tualatin to provide access to and through Heritage Pines Natural Area
- Explore joint development opportunities of Heritage Pines Natural Area. Consider park elements to meet Pony Ridge neighbor needs, such as:
  - Nature play area
  - Seating area
  - Small picnic shelter that fits in with Metro’s vision for this site

## ***CENTRAL TUALATIN SPORTS PARK***

**Improved access to parkland is needed south/central Tualatin, where developed parks are lacking. The City should explore expanding school partnerships to meet park and sport field needs.**

- Explore the joint use of outdoor recreation facilities at Byrom Elementary, in addition to the existing cross-country trail
- Explore the acquisition of property adjacent to Tualatin Elementary School for sports field development

## ***COMMUNITY RECREATION CENTER LAND ACQUISITION***

**Acquire land and develop parks consistent with Master Plan systemwide recommendations and proposed park standards.**

- Acquire 4-5 acres to develop a new community recreation center as noted below, or develop in an existing community park
- Provide sufficient space for indoor/outdoor programming opportunities

## ***ADDITIONAL PARK OPPORTUNITIES***

**Acquire land and develop parks consistent with Master Plan systemwide recommendations and proposed park standards.**

- Identify and develop developed parks to support recreation and social gathering needs in residential and commercial areas
- Provide parks and recreation facilities, programs, and services in accordance with established standards as new expansion areas are planned by and annexed to the City
- Acquire space to develop other new facilities as noted below, or develop these in parks where appropriate

## **Proposed Facilities**



## ***COMMUNITY RECREATION CENTER***

**Multipurpose community recreation centers are full-service, multi-generational facilities offering recreation, health, wellness, and social engagement opportunities.**

Modern recreation centers are generally at least 25,000 to 30,000 square feet (sf) in size, and can be much larger (65,000+ sf, though this size facility typically also includes an indoor aquatic center). Modern multi-purpose recreation centers include a variety of spaces, and the final building program is usually determined as part of a business and operations plan that focuses on cost recovery and financial performance. Frequently, an equity partner is involved in development and/or site operations; partnerships should be addressed in the business and operations plan.

Though these centers typically do not fully recover their operating costs, the right mix of features that maximize revenue potential and adjacencies that are efficient to staff will minimize the operating subsidy needed for the facility. A business and operations plan will help the City determine the best location, the right mix of features and the preferred operating model. Many centers of this type include a health and fitness component and offer memberships as part of their operating model. Typical features included in a multi-purpose recreation center building program are:

- Social gathering hub/lobby space designed for multi-uses/events, often with an entry checkpoint for members
- Gymnasium (multiple courts if possible)
- Additional health and fitness elements such as a fitness equipment, a walking track, a climbing wall, dance/exercise studio space
- Locker rooms
- Multi-purpose banquet room and event space suitable for both programs and private rentals
- Meeting rooms (wired for meeting technology)
- Classroom space, which sometimes includes a “messy room” with a sink for art classes
- Storage space to allow flexibility in programming
- Office space for staff

Additional features that should be considered as part of a business and operations plan for a multipurpose recreation center in Tualatin include:

- Indoor soccer field(s)
- Cultural, performing, and fine arts space, such as a theater/stage, studio space, dance studios, sound-proof music studios and gallery/exhibit space
- Maker/incubator space
- Career center
- Work-share space
- Additional social gathering space
- Indoor/outdoor connected programming and event space
- Multi-story structure

The business and operations plan should address facility location. Acquisition may be needed. General guidelines for locating a multipurpose recreation center include:

- Located relatively centrally within the market area
- Good visibility from a major street
- Connected to the trail and bikeway network
- If a stand-alone site, approximately 4-5 acres of buildable land suitable for indoor/outdoor programming opportunities

- If within a site, park should be classified as a community park
- Access to public transportation and/or bicycle transportation network
- Space for sufficient parking
- Space for indoor/outdoor recreation programming and events

The business and operations plan should consider impacts of this facility on the Department's other indoor buildings, including those in Tualatin Community Park, Brown's Ferry Park, and Sweek Ponds Natural Area

- Depending on site selection, consider repurposing existing buildings for other uses or eliminating them.
- Evaluate operational impacts associated with providing one consolidated arts, recreation, sports and community facility (with Department administrative space) versus 2-3 smaller buildings

## SPORTS FACILITIES (FIELDS AND COURTS)

**There is a need for additional sport field space, improvements to existing fields to improve and expand playability, as well as an added variety of sports courts. While site and other facility recommendations also address sport field needs, recommendations are summarized below for a more comprehensive approach to addressing these needs.**

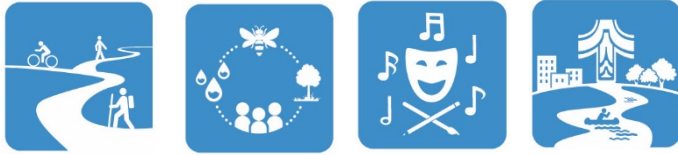
- **Sports complex:** Investigate options to acquire, plan, and develop sports fields on land adjacent to Tualatin Elementary and/or as part of a new park in the Basalt Creek Concept Plan Area for grouped fields. Consider both multi-use rectangular and diamond sports field complexes (lighted, synthetic turf, multi-use, seating) suitable for league and tournament play
- **School Joint Use Agreement:** Coordinate on use of school fields; formalize arrangement in joint-use agreements; consider improving fields at selected sites
- **Pickleball courts:** Consider a pickleball court complex (4 lighted courts at minimum), plus joint striping/lighting of 2-court pairs of tennis/pickleball courts at Atfalati and Tualatin Community Park
- **Futsal court:** Add 1-2 dedicated futsal courts (1 at Atfalati and another site TBD)
- **Sports court variety:** Identify sites suitable for badminton, bocce, table tennis, shuffleboard, and similar sports courts and games. Consider low-impact opportunities near the Juanita Pohl Center and active use courts in areas with nearby youth and teens
- **Indoor sports space:** provide 1-2 gymnasiums and consider fieldhouse elements in conjunction with the community recreation center
- **Added fields:** Consider through site master planning adding sports fields to Jurgens
- **Existing field improvements:** Consider moving/improving the Tualatin Community Park ballfield and adding lighting, seating and drainage improvements to other sites to expand playability
- **Summer sports:** Leave out soccer goals at selected sites during summer months (alternating sites to allow field rest) to support summer drop-in play
- **Shade:** Ensure there are adequate shade or shelters provided in proximity to fields and court facilities to address needs of spectators, teams, and parents

## OTHER OUTDOOR FACILITIES

**Options to expand the variety of recreation experiences and facility access should be evaluated through site planning, design, and master planning at various sites. The variation and geographic distribution of several different types of elements should be considered at targeting sites across the City. The City may want to integrate a few of these at pilot sites to test use, before adding them to additional sites. Additional recreation opportunities that respond to trends and community needs may be considered beyond the list of facilities noted below.**

- **Play areas:** Vary the types of play areas in parks to address needs for universal play, nature play, and water play while supporting imaginative, creative, and active play for children and families. Incorporate art in play areas, including playable elements such as musical instruments. Address lack of play areas for toddlers and preschool groups.
- **Teen zone:** Select 1-3 sites (e.g., Atfalati, Ibach and Basalt Creek) to add challenge and adventure play elements for teens, such as zip lines, rope swings, climbing spire/net climbers, bike skills course, skate spots/parks, etc.
- **Skate Park:** Identify a skate park location in a geographic area of the City to serve residents that do not have access to the current skate facility at Tualatin Community Park
- **Dog parks:** Consider off-leash dog areas at Jurgens Park and possibly the proposed Basalt Creek Community Park (or similar sites to distribute options around the city). Provide small and large dog areas. Vary surfacing to include turf, decomposed granite, synthetic turf or a combination of the three. Provide site amenities such as dog waste dispensers, seating and a gated main entry, if fenced. Consider additional amenities, such as drinking stations, water pools, shade, picnic tables, topography, lighting and landscaping. Consider fenced areas, and if appropriate, unfenced areas buffered from other site uses
- **Community gardens:** Identify 1-2 sites with sunlight, drainage, access to water, and land suitable for gardens or raised gardens. Consider options adjacent to recreation facilities or schools for joint programming
- **Disc golf course:** Provide one 18-hole disc golf course at a site TBD
- **Water access facilities:** Evaluate option to add one additional floating dock on the river and/or add additional sections to existing floating docks
- **Fitness facilities/equipment:** Integrate outdoor fitness equipment at 1-2 community parks or large neighborhood parks. Consider adding outdoor fitness equipment along trails.
- **Activity spots:** Consider unique elements in 3-5 parks to support social interaction, fitness and play, such as skate spots, uneven shooting hoops, outdoor ping pong tables, giant chess boards, chess tables, pop-up play installations, hill slides/climbers, slack lines, hammocks, unique swings, mini foot golf, putting green, tai chi court, etc.
- **Interpretive/nature spots:** Consider adding small venues to connect people to nature in 3-5 parks, natural areas, and greenways. These may incorporate both natural and developed elements, such as butterfly garden/pollinator patch, frog pond, rock formation for climbing/seating, vista/viewpoint, interpretive area or trail, permaculture area, accessible creek, stepping stones or logs, bridged bioswales, rock gardens, groves, treehouses, etc.
- **Shade:** Ensure there are adequate shade or shelters provided in proximity new outdoor facilities

## Proposed Natural Parks & Areas



### **Protect natural resources in the Basalt Creek Canyon and throughout Tualatin.**

- Identify and protect natural areas following the guidance noted in systemwide recommendations
- Promote natural areas through new and continued partnership with Clean Water Services and Tigard-Tualatin School District
- Consider opportunities to acquire natural areas in conjunction with park development in the Basalt Creek Concept Plan Area. Acquire additional land for natural parks to support planned trail connectivity, protect creek canyon habitat and natural resources, and provide opportunities for nature interpretation

## Proposed Greenways and Shared Use Paths



### **Recommendations for Tualatin’s greenways, shared use paths and trails focus on filling gaps in the existing trail network and extending trails to create interconnected loops and access to parks and open space.**

- Connect the trail system by developing planned and proposed paths as per **Map 1: Existing, Planned, and Proposed Parks and Trails**.
- Focus efforts on acquiring priority trail segments as opportunities arise to improve access to parks and other community designations. Continue to re-assess trail priorities to achieve proposed trail guidelines and greenway standards. Priority trails with estimated trail distances include:
  - Tualatin River Greenway Trail (3.3 mi.)
  - Ice Age Tonquin Trail to Basalt Creek Plan Area (1.83 mi.)
  - Hedges Creek Trail (2.4 mi.)
  - Saum Creek Greenway Trail (0.95 mi.)
  - Nyberg Creek Trail (0.70 mi.)
  - Tualatin Reservoir to Ibach Park connection (0.92 mi)
- Explore a partnership with Metro, King City, and others to provide a bridge over the Tualatin River connecting to the planned Westside Regional Trail at the Heritage Pines Natural Area

- Expand water access in selected sites
- Work with Tigard to expand Tualatin River Greenway as a loop around the river (consider bridge at end of Cook Park Greenway to connect)
- Connect existing trail segments in South and Central Tualatin to improve recreation opportunities and access to nearby schools, natural areas, retail services, medical, and public facilities, as well as the proposed park in the Basalt Creek Concept Plan Area
- Prioritize accessibility, safety, and a natural look and feel in trail design
- Add lighting, seating, dog waste stations, trash receptacles, viewpoints, interpretative, and interactive art in appropriate trail locations throughout the trail system
- Consult with Tualatin Historical Society to identify and/or develop interpretive themes along trails and greenways

## Public Art



**Public art in Tualatin is important in connecting people to art, culture, history, and nature, as well as strengthening the City’s identity and sense of place. Art and/or interpretive elements can be integrated in many public parks, facilities, greenways and spaces as noted in the site recommendations above, as well as systemwide recommendations.**

Recommendations for the City’s public art program include:

- Integrate art into public parks and greenways to interpret nature, culture, or history, or to add to the site’s identity. Consider interpretive, expressive, educational, functional and abstract art.
- Consider the relative representation of art in City neighborhoods and seek to distribute public art broadly in public spaces throughout the community
- Continue to focus on themes for place-based art that enhance Tualatin’s identity and sense of place, but also move beyond these themes to creative expressions of Tualatin’s character and identity. Consider the following:
  - Geologic and glacial processes with an emphasis on the Ice Age floods
  - Human history in Tualatin, from local tribes such as the Atfalati to the agricultural/settlement history of Tualatin and significant individuals and buildings
  - Natural history, including native flora and fauna
  - Tualatin’s cultural and ethnic diversity
  - Abstract or expressive representations of Tualatin’s identity
- Integrate arts and culture into the design or renovation of all public buildings, including but not limited to the addition of exhibit or display spaces
- Curate more temporary art installations and performance art in parks and public spaces throughout Tualatin. (Example: The Quilt Barn Trail piece at Brown’s Ferry Park is an example of temporary art, in this case part of a larger Washington County temporary installation)
- Provide for diverse forms of art at park sites, since a wide range of style, media, subjects, and viewpoints will offer perspective and interest for everyone





# PARKS & RECREATION MASTER PLAN

## MATRIX OVERVIEW (REVISED DRAFT)

The Park Recommendations Matrix identifies the types of capital projects recommended for existing parkland and potential future sites in the City of Tualatin’s park system. It also notes expectations for ongoing maintenance and operations. These recommendations advance all Master Plan goals and provide overarching guidance for park investment. They are intended to complement the more detailed site recommendations in the companion document.



## Matrix Definitions and Assumptions

The City of Tualatin Existing Parks, Natural Areas & Recreation Site Recommendations Matrix (DRAFT), includes the following information:

### SITE OVERVIEW

- **Site Name:** Name of the site.
- **Acreage:** Total existing or proposed acreage of site.
- **Park Type:** The site’s classification, as noted in the approved parkland inventory.

### CAPITAL PROJECTS

#### Build

- **Master Plan/Feasibility Study:** Update existing site master plans, develop new design concepts or site master plans and/or conduct feasibility studies to identify acquisition, development and/or operational plans. This applies to proposed new parks, major facilities, and to existing sites slated for significant enhancements.
- **Parkland Acquisition or Easements:** Where appropriate, obtain new land for parks, natural areas, greenways or trails. Acquisition may be through purchase or other means.

- **Site Development:** Develop an existing or acquired piece of property, including infrastructure, access and new amenities and facilities.
- **Percentage of Site to Be Developed:** This column notes the area of the site that will be developed upon completion of recommended improvements. The percentage is an estimate to account for the fact that some sites are partially developed already. This percentage also can be adjusted for new sites that may be phased in, with only half of the site (for example) developed during the planning horizon.

## Enhance

- **Added Recreation Element:** Add a new site feature or make a specific improvement that does not involve further site enhancements or renovations.
- **Added Trail:** Develop a trail and add minor support amenities to a site that does not involve further site enhancements or renovations.
- **Added Integrated or Functional Art:** Add artwork to a site. The art may be integrated into other features.
- **Minor Renovation:** Provide small to medium level of improvements/upgrades to an existing park. Minor renovations can include (but are not limited to) elements such as small park features, enhanced play areas, seating areas, trails, new/renovated sports courts, small circulation adjustments, site furnishings, plantings, etc. Minor renovations are anticipated to affect approximately a quarter of the developed portion of the site.
- **Major Renovation:** Provide extensive level of improvements/upgrades to an existing park. Major renovations many include (but are not limited to) new, large-scale, signature park elements such as destination play areas, sports fields, new picnic shelters, restrooms, etc. Major renovations are anticipated to affect approximately half of the developed portion of the site or add costly features and facilities to the site. This may include a mix of large and small site adjustments.
- **Special Use Building Renovation:** Renovation of a community center, heritage center, administrative offices or similar special use building.
- **Enhancement Through Partnership:** Collaborate with a partner to add a facility or renovate a site.

## Steward

- **Natural Resource Restoration:** Steward or restore natural resource areas such as habitat, wetlands, riparian corridors, prairies and forested areas to remove invasive species and protect wildlife, tree canopies, water quality and the ecological function of sites. This may include wildfire protection and replanting with native species to restore the ecological health of the site.
- **Deferred Maintenance:** Attend to deferred tasks required to maintain, preserve, and enhance a park or building site to a level that is aesthetically pleasing, well-tended, and safe. Includes work such as turf care, refreshed plantings, repair/replacement of site furnishings, building painting or residing, roof or infrastructure repairs, etc.
- **Accessibility Improvements:** Remove barriers to site or facility access as per the recommendations of the ADA Transition Plan.

- **Capital Reinvestment and Replacement:** Set aside funds annually to offset the costs of replacing facilities at the end of their lifecycles. Funds can be used for major repairs, but these funds are not intended to support routine maintenance.

## MAINTENANCE AND OPERATIONS

### Maintain

- **Standard Maintenance:** Provide standard level of care including all routine and preventative tasks necessary to maintain parks at an adequate level for safe access and use. Includes landscaping and janitorial services.
- **Enhanced Maintenance:** Provide a higher level of maintenance and more frequent tasks at sites that have specialized assets, are heavily programmed, provide special events and reservable facilities, or are otherwise heavily used. These sites are maintained at the highest level and receive priority during peak use times.
- **Natural Resource Maintenance:** Provide specialized maintenance of natural areas, including routine monitoring and inspection, tree pruning, invasives removal, dump and litter pickup, hazards removal.

### Program

- **Recreation Activities/Programs:** Provide and support classes, programs, activities and or league play at the site in core program service areas as appropriate.
- **Community & Special Events:** Support large and small group events and activities at the site, whether organized and hosted by the City or by another partner.

### Partner

- **Memorandum of Understanding, Partnership Agreement or Joint Use Agreement Update:** Update or develop joint use agreements, partnership agreements or MOUs with partner(s) to identify roles and responsibilities for site or facility acquisition, development, maintenance, operations or management.

**Table: City of Tualatin Existing Parks, Natural Areas & Recreation Site Recommendations Matrix (REVISED DRAFT)**

Site Name	Acreage	Type	Capital Projects														Operations and Maintenance					
			Build				Enhance						Steward				Maintain			Program		Partner
			Master Plan/Feasibility Study	Parkland Acquisition or Easements	Site Development	Percentage of Site to Be Developed <sup>1</sup>	Added Recreational Element (\$)	Added Trail	Added Art	Minor Renovation	Major Renovation	Special Use Building Renovation	Enhancement Through Partnership	Natural Resource Restoration	Deferred Maintenance	Accessibility Improvements (See ADA Transition Plan) <sup>2</sup>	Capital Reinvestment and Replacement	Standard Maintenance	Enhanced Maintenance	Natural Resource Maintenance	Recreation Activities/Programs	Community & Special Events
<b>Existing Parks and Facilities</b>																						
Atfalati Park	13.27	LNP			●	25%			●		●			●	●	●	●		●	●		
Ibach Park	20.08	LNP			●	25%			●		●			●	●	●	●		●	●		
Jurgens Park	15.59	LNP	●		●	40%		●	●		●			●		●	●		●	●		
Lafky Park	2.00	SNP				-			●					●	●	●	●	●				
Stoneridge Park	0.23	SNP				-					●		●	●	●	●	●				●	
Tualatin Commons	4.83	SU				-		●	●				●	●	●	●	●		●	●	●	
Tualatin Commons Park	0.64	SU				-		●					●	●	●	●	●					
Tualatin Community Park	27.11	CP	●			-	●			●	●		●	●	●	●	●		●	●		
<b>Existing Natural Parks &amp; Areas</b>																						
Brown's Ferry Park	43.21	NP	●			-	●		●		●	●	●	●	●	●	●		●	●	●	
Hedges Creek Wetlands Protection District	29.06	NA				-			●					●	●	●	●			●		
Hervin Grove Natural Area	0.29	NA				-		●						●						●		
Johnnie and William Koller Wetland Park	15.32	NA	●		●	25%		●	●					●			●		●	●		
Little Woodrose Nature Park	6.55	NP				-								●	●	●	●	●				
Saarinen Wayside Park	0.06	NP				-								●		●				●		
Sequoia Ridge Natural Area	0.65	NA				-								●	●					●		
Sweek Ponds Natural Area	4.68	NA				-			●	●		●		●	●	●			●	●	●	
Sweek Woods Natural Area	5.03	NA				-								●						●		
Victoria Woods Natural Area	2.22	NA				-								●	●	●				●		

Site Name	Acreage	Type	Build				Enhance						Steward			Maintain			Program		Partner	
			Master Plan/Feasibility Study	Parkland Acquisition or Easements	Site Development	Percentage of Site to Be Developed <sup>1</sup>	Added Recreational Element (s)	Added Trail	Added Art	Minor Renovation	Major Renovation	Special Use Building Renovation	Enhancement Through Partnership	Natural Resource Restoration	Deferred Maintenance	Accessibility Improvements (See ADA Transition Plan) <sup>2</sup>	Capital Reinvestment and Replacement	Standard Maintenance	Enhanced Maintenance	Natural Resource Maintenance	Recreation Activities/Programs	Community & Special Events
<b>Existing Greenways</b>																						
Chieftain/Dakota Greenway	6.14	G				-									•		•			•		
Hedges Creek Greenway	11.66	G			•	80%									•		•			•		
Helenius Greenway	0.43	G				-									•					•		
Hi-West Estates Greenway	1.59	G				-									•		•			•		
Indian Meadows Greenway	3.82	G				-									•		•			•		
Nyberg Creek Greenway	5.78	G			•	95%	•	•							•		•			•		
Nyberg Creek (South) Greenway	2.30	G			•	100%	•								•					•		
Saum Creek Greenway	54.22	G			•	65%	•	•							•		•			•		
Shaniko Greenway	3.30	G				0%									•		•			•		
Tualatin River Greenway	30.39	G			•	45%	•	•	•						•		•	•		•	•	
<b>Existing School Joint-Use Facilities</b>																						
TuHS Leonard Pohl Field	N/A	JU				-														•		•
TuHS-Byrom Elementary Cross Country Running Trail	N/A	JU				-														•		•
<b>Existing Shared Use Paths</b>																						
65th Avenue Shared Use Path	0.47	SUP				-																•
Boones Ferry Road Shared Use Path (Byrom Elementary to Arapaho Road)	0.41	SUP				-																•
Byrom Elementary Shared Use Path (Martinazzi Ave. to Boones Ferry Rd.)	0.80	SUP				-																•
Cherokee Street Shared Use Path (108th Ave to Rail Road ROW)	0.09	SUP				-																•
I-5 Shared Use Path (Warm Springs St. to Sagert St.)	1.54	SUP			•	100%	•															•
Ice Age Tonquin Trail	3.06	SUP	•		•	95%	•	•							•		•	•				

Site Name	Acreage	Type	Build				Enhance						Steward				Maintain			Program		Partner
			Master Plan/Feasibility Study	Parkland Acquisition or Easements	Site Development	Percentage of Site to Be Developed <sup>1</sup>	Added Recreational Element (s)	Added Trail	Added Art	Minor Renovation	Major Renovation	Special Use Building Renovation	Enhancement Through Partnership	Natural Resource Restoration	Deferred Maintenance	Accessibility Improvements (See ADA Transition Plan) <sup>2</sup>	Capital Reinvestment and Replacement	Standard Maintenance	Enhanced Maintenance	Natural Resource Maintenance	Recreation Activities/Programs	Community & Special Events
<b>Proposed Parks and Facilities</b>																						
Jurgens Park addition	5.2	LNP	●	●	●	100%	●	●								●		●		●	●	
Tualatin Community Park addition	3.0	LNP	●	●	●	100%	●	●								●		●		●	●	
Basalt Creek park	20.0	CP	●	●	●	100%	●	●								●		●		●	●	
East Tualatin / Bridgeport Elementary partnership	2.0	JUA				TBD					●					●	●			●		●
Pony Ridge/ Heritage Pines partnership	0.0	JUA				TBD	●	●			●					●						●
Central Tualatin sports park	9.0	SU	●	●	●	TBD	●	●			●					●		●		●		●
Community recreation center	5.0	SU	●	●	●	100%	●	●			●					●		●		●	●	
Additional park opportunities	21.8	TBD	●	●	●	100%										●	●					
<b>Proposed Natural Parks &amp; Areas</b>																						
New natural park and areas	12.7	NP/NA	●	●	●	100%	●	●								●		●		●	●	
<b>Proposed Greenways and Shared Use Paths</b>																						
New greenways and shared use paths	15.1	G/SUP	●	●	●	100%	●	●								●	●		●			
Westside Trail bridge	TBD	G/SUP	●	●	●	100%	●				●					●	●					●

Notes:  
 1. The percentage of site to be developed will be updated when Site Master Plans are completed.  
 2. Information will be added when the ADA Transition Plan is completed.  
 Sites highlighted in orange need to be checked to determine what portion of the existing site is affected by new trail development.



# SAUM CREEK GREENWAY TRAIL ALIGNMENT PLAN



**3J CONSULTING**  
 CIVIL ENGINEERING | WATER RESOURCES | COMMUNITY PLANNING

FEBRUARY 2017



# STAFF REPORT

## CITY OF TUALATIN

**TO:** Honorable Mayor and Members of the City Council

**THROUGH:** Sherilyn Lombos, City Manager

**FROM:** Sou Souvanny, Management Analyst II  
Rich Mueller, Parks and Recreation Manager

**DATE:** 06/25/2018

**SUBJECT:** Consideration of **Resolution No. 5384-18** Granting Heritage Tree Status of Two Trees on City Property Located Along the Tualatin River Greenway Near the Nyberg Woods Trail Connection

---

### ISSUE BEFORE THE COUNCIL:

Council will consider granting Heritage Tree status to two trees east of the wooden connector ramp to the Tualatin River Greenway trail at Nyberg Woods.

### RECOMMENDATION:

The Tualatin Park Advisory Committee (TPARK) acts as the City's Tree Board, and after reviewing the nomination application, recommends that Council grant Heritage Tree status to the two trees.

### EXECUTIVE SUMMARY:

On June 22, 1987, Council established a Heritage Tree Program (Ordinance No. 723-87, TMC 1-23) to recognize, foster appreciation of, and protect Heritage Trees; to inspire awareness of the contribution of trees to the community; and to encourage the planting of trees. A Heritage Tree is defined as a tree or stand of trees that, due to its age, size, species, quality or historic association, is of landmark importance and its retention as such will not unreasonably interfere with the use of the property upon which it is located.

TPARK, in their role as the Tree Board, and in cooperation a City arborist, reviewed the nomination. It is recommended that Council grant Heritage Tree status to the following trees:

Name: **Tualatin River Greenway Trail Redwoods**  
Species: *Sequoia sempervirens* (Coast Redwood)  
Location: East of the Tualatin River Greenway entrance at the Nyberg Woods trail connection behind Forest Rim Apartments  
Owner: City of Tualatin

This trees were planted on April 14, 2018 as a part of the 2018 Arbor Week Celebration. Mayor Lou Ogden and Paul Hennon, Community Services Director in the City of Tualatin, planted the trees to commemorate Arbor Day.



**OUTCOMES OF DECISION:**

If granted Heritage Tree status these trees will be added to the City's Heritage Tree inventory and a plaque will be placed in front of them, identifying each as such. By granting Heritage Tree status, the City shall record the designation as Heritage Trees, the site and description on the land title.

**FINANCIAL IMPLICATIONS:**

This trees will be maintained by the Parks Maintenance Division as any other tree on City property with no new additional maintenance costs.

---

**Attachments:** [Resolution](#)  
[Location Map and Photos](#)

RESOLUTION NO. 5384-18

A RESOLUTION GRANTING HERITAGE TREE STATUS OF TWO TREES ON CITY PROPERTY LOCATED ALONG THE TUALATIN RIVER GREENWAY NEAR THE NYBERG WOODS TRAIL CONNECTION.

WHEREAS, Council established a program to recognize and protect Heritage Trees, as provided in Tualatin Municipal Code (TMC) 1-23; and

WHEREAS, Council finds that a Coast Redwood to be located near Tualatin River Greenway at Barngrover Way should receive Heritage Tree designation; and

BE IT RESOLVED BY THE CITY COUNCIL OF THE CITY OF TUALATIN, OREGON, that:

**Section 1.** The two Coast Redwoods (*Sequoia sempervirens*) to be located on City owned property in Tualatin Oregon on Tax Lot 02900 of Tax Map 2S124A, approximately 122° 44' 53.2104" W 45° 23' 10.7772" N is hereby designated Heritage Trees under TMC 1-23. The Heritage Trees are located east of the Nyberg Woods connector ramp at the entrance to the Tualatin River Greenway.

**Section 2.** The City will care for and manage the trees consistent with the provisions and restrictions in TMC 1-23.

**Section 3.** The City Recorder is directed to record a copy of this resolution in the County Records to provide notice of the designation as Heritage Trees.

**Section 4.** City staff is directed to place plaques identifying each tree as a Heritage Tree in a visible location near the individual tree, place the trees on the official listing and map of Heritage Trees, and maintain said listing and map in accordance with the provisions of TMC 1-23.

**Section 5.** This resolution is effective upon adoption.

INTRODUCED AND ADOPTED this 25th day of June, 2018.

CITY OF TUALATIN, OREGON

BY \_\_\_\_\_  
Mayor

APPROVED AS TO FORM

ATTEST:

BY: \_\_\_\_\_  
City Attorney

BY: \_\_\_\_\_  
City Recorder

## Attachment B Photos and Location of Heritage Tree



Coast Redwood #1 at Arbor Week Tree Planting  
(April 14, 2018)



Coast Redwood #2 at Arbor Week Tree Planting  
(April 14, 2018)

The Coast Redwoods are located east of the entrance to the Tualatin River Greenway at the Nyberg Woods connector, a City owned property in Tualatin Oregon. The trees are located on Tax Lot 02900 of Tax Map 2S124A, approximately 122° 44' 53.2104" W 45° 23' 10.7772" N.



# Proclamation

## *Proclamation Declaring the Month of July 2018 as "National Park and Recreation Month" in the City of Tualatin*

WHEREAS, parks and recreation programs are an integral part of communities throughout this country, including Tualatin; and

WHEREAS, our parks and recreation are vitally important to establishing and maintaining the quality of life in our communities, ensuring the health of all citizens, and contributing to the economic and environmental well-being of a community and region; and

WHEREAS, parks and recreation programs build healthy, active communities that aid in the prevention of chronic disease, provide therapeutic recreation services for those who are mentally or physically disabled, and also improve the mental and emotional health of all citizens; and

WHEREAS parks, trails and recreation programs increase a community's economic prosperity through increased property values, expansion of the local tax base, increased tourism, the attraction and retention of businesses, and crime reduction; and

WHEREAS parks and recreation areas are fundamental to the environmental well-being of our community by improving water quality, protect groundwater, prevent flooding, improve the quality of the air we breathe, provide vegetative buffers to development, and produce habitat for wildlife; and

WHEREAS our parks and natural recreation areas ensure the ecological beauty of our community and provide a place for children and adults to connect with nature and recreate outdoors; and

WHEREAS Tualatin recognizes the benefits derived from parks and recreation resources and are dedicated and enthusiastic parks and recreation program users.

NOW, THEREFORE, BE IT PROCLAIMED BY THE CITY COUNCIL OF THE CITY OF TUALATIN, that:

All citizens are urged to celebrate and use community parks and recreation facilities and programs to increase joy and happiness, health and fitness and social connections.

The City of Tualatin celebrates the sixteenth year of Park and Recreation Month and supports the enduring importance of parks and recreation by proclaiming the month of July as Parks and Recreation Month in Tualatin.

INTRODUCED AND ADOPTED this 11<sup>th</sup> day of June, 2018.

CITY OF TUALATIN, OREGON

BY \_\_\_\_\_  
Mayor

ATTEST:

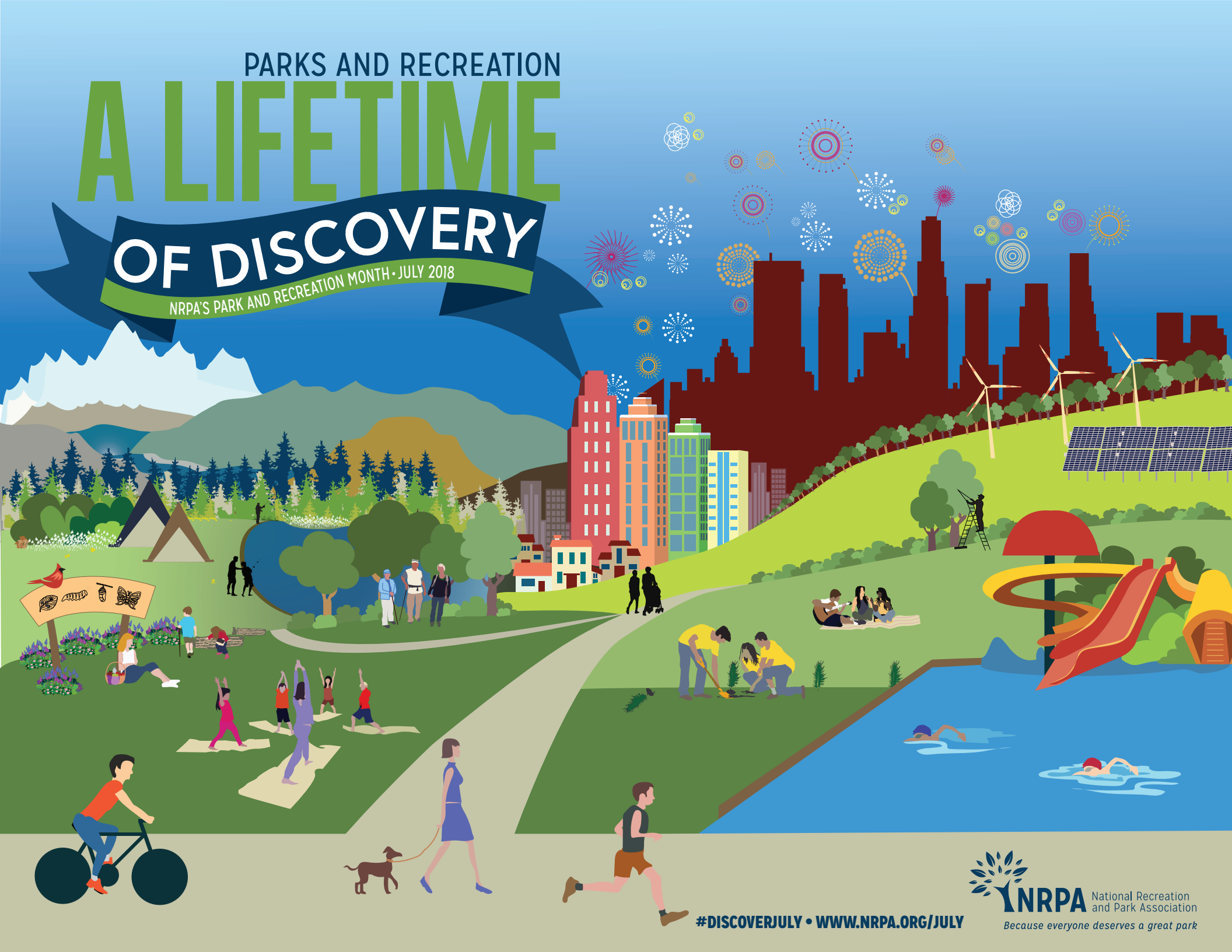
BY \_\_\_\_\_  
City Recorder

PARKS AND RECREATION

# A LIFETIME

# OF DISCOVERY

NRPA'S PARK AND RECREATION MONTH • JULY 2018



## 2018 Local Government Grant Program - Large Grant Award Recommendations

The following grant applications have been recommended for Local Government Grant Program (LGGP) funding by the LGGP Advisory Committee. Next, these grant requests will be forwarded to the OPRD Commission for final review and approval at the Commission's September meeting. LGGP awards are not official until approved by the OPRD Commission.

Applicant	Project Name	Grant Funds Requested	Local Match / Matching Funds	Total Project Cost
Ashland Parks and Recreation	North Mountain Park Nature Play Area	\$ 127,182	\$ 131,348	\$ 258,530
Chehalem Park & Recreation District	Friends Park	\$ 287,000	\$ 411,649	\$ 698,649
City of Cottage Grove	Swinging Bridge Restoration	\$ 200,000	\$ 211,345	\$ 411,345
City of Enterprise	Enterprise Field Complex Improvement	\$ 250,231	\$ 124,050	\$ 374,281
City of La Grande	Concessions/Bleachers/ADA Upgrades	\$ 96,308	\$ 122,104	\$ 218,412
City of Medford	Cedar Links Park Development	\$ 490,017	\$ 942,317	\$ 1,432,334
City of Ontario	Lions Park Water Playground	\$ 298,200	\$ 229,000	\$ 527,200
City of Redmond	Baker Park Improvement Project	\$ 300,000	\$ 300,000	\$ 600,000
City of Sherwood	Sherwood Skate Park	\$ 326,014	\$ 217,342	\$ 543,356
City of Tualatin	Ibach Park Playground Renovation	\$ 136,500	\$ 136,500	\$ 273,000
City of Turner	Crawford Crossing Lake/Park Project	\$ 392,000	\$ 442,000	\$ 834,000
Clackamas County	Metzler Park Campground Restroom Replacement	\$ 162,500	\$ 162,500	\$ 325,000
Crook County Parks & Recreation District	Ochoco Creek Park East End Renovation	\$ 280,896	\$ 187,264	\$ 468,160
Jefferson County	Juniper Hills Park Rehabilitation	\$ 297,000	\$ 95,000	\$ 392,000
John Day Canyon City Parks and Recreation District	Playground Development Project	\$ 243,083	\$ 120,496	\$ 363,579
Malin Park and Recreation District	Malin Pool Rehabilitation Project	\$ 352,500	\$ 100,000	\$ 452,500
North Clackamas Parks and Recreation District	Boardman Wetland Natural Area	\$ 385,000	\$ 615,000	\$ 1,000,000
Willamalane Park and Recreation District	Bluebelle Park Rehabilitation	\$ 239,000	\$ 239,000	\$ 478,000
<b>Totals:</b>		<b>\$ 4,863,431</b>	<b>\$ 4,786,915</b>	<b>\$ 9,650,346</b>

The projects listed above will utilize all funding currently allocated for 2018 LGGP Large Grant awards. 2018 project applications not listed above cannot be funded at this time and will not move forward in this process.

# **CITY OF TUALATIN'S IBACH PARK PLAYGROUND RENOVATION PROJECT**

Oregon Parks and Recreation Department  
Local Government Grant Program Presentation  
June 20, 2018



# THE CITY OF TUALATIN

- Total area of 5,201 acres in Washington County and Clackamas County
- 12 miles south of Portland, 35 miles north of Salem
- City was established in 1913
- Estimated 2017 population: 26,960

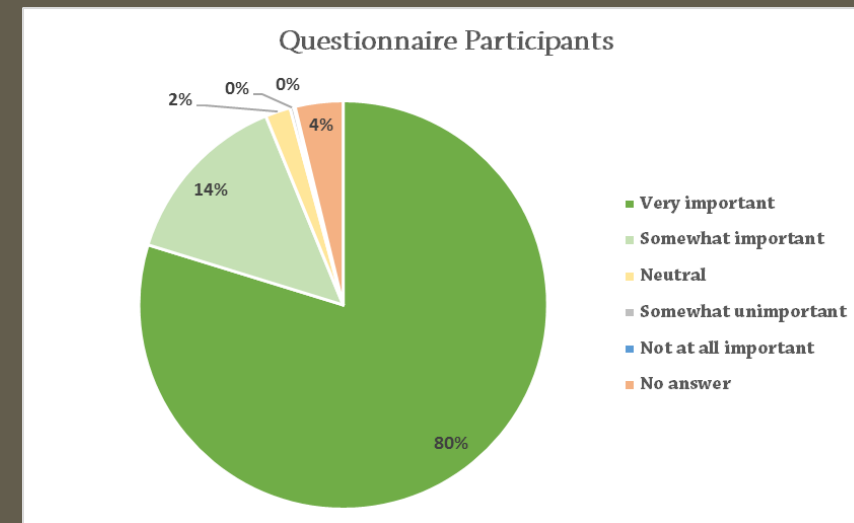
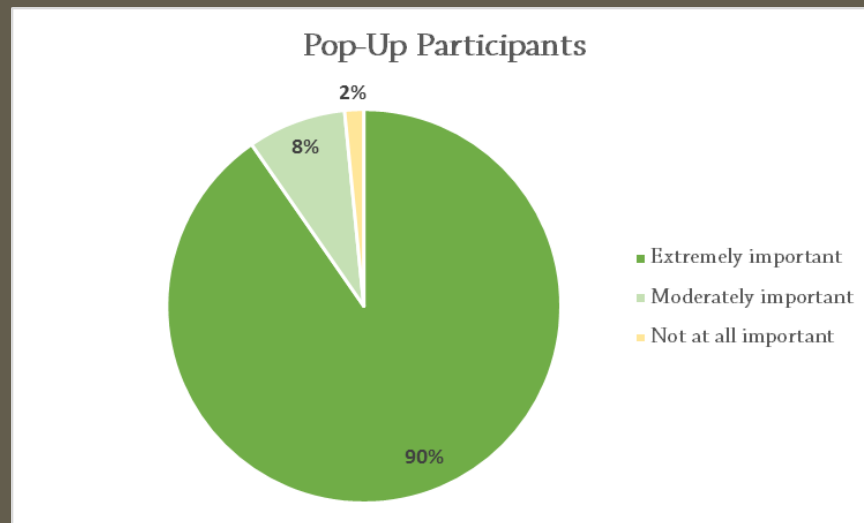
Source: Certified population estimates from the Portland State Population Research Center





# WHO WE ARE

- We value parks and recreation.
- Parks and recreation are important to Tualatin community members' quality of life
- With this renovation project, we will be encouraging physical fitness, healthy activity for the community's children in a safe environment for all abilities.



# IBACH PARK PLAYGROUND



# IBACH PARK

- A 20-acre Neighborhood Park
- Playground is approximately 0.75 acres
- With the youth sports organizations use the parks acts as a Community Park
- Ibach Park serves approximately 3,177 residents within a half mile radius

Source: 2016 American Community Survey 5-year estimates

- Accessible, Inclusive and Interactive Playground
  - Featured in Landscape Architecture in 1997
  - Best Park Playground Award - Portland Parent Magazine, 1998
  - Design Award - Oregon Recreation and Parks Association, 1996



# COMMUNITY NEED

Why is this important to the community?



- At the time of opening, the population of Tualatin was 20,000 people
- 35% population growth and today the park/playground serves about 12% of Tualatin's population

- Because of the highly interactive and engaging design of the playground and age, the equipment and safety surfacing have naturally degraded



## SAFETY SURFACING

Installed in 1996, the safety surfacing has exceeded the standard life expectancy and need to be replaced



## SAFETY SURFACING

Over time, the safety surfacing has degraded and separated from use and natural wear and tear, creating unsafe conditions



**COMMUNITY SURVEY RESULTS**

**PARKS & LIBRARY**

**93%**

**VISITED A PARK AT LEAST ONCE IN THE LAST 12 MONTHS**

**92%**

**RATE CITY PARKS AS EXCELLENT/ GOOD—MUCH ABOVE COMPARISON**



**COMMUNITY SUPPORT**

Strong commitment and dedicated matching funds in the City's Capital Improvement Plan (27%) from the General Fund budget

High support for Parks throughout the City and all that goes into maintaining them





# QUESTIONS

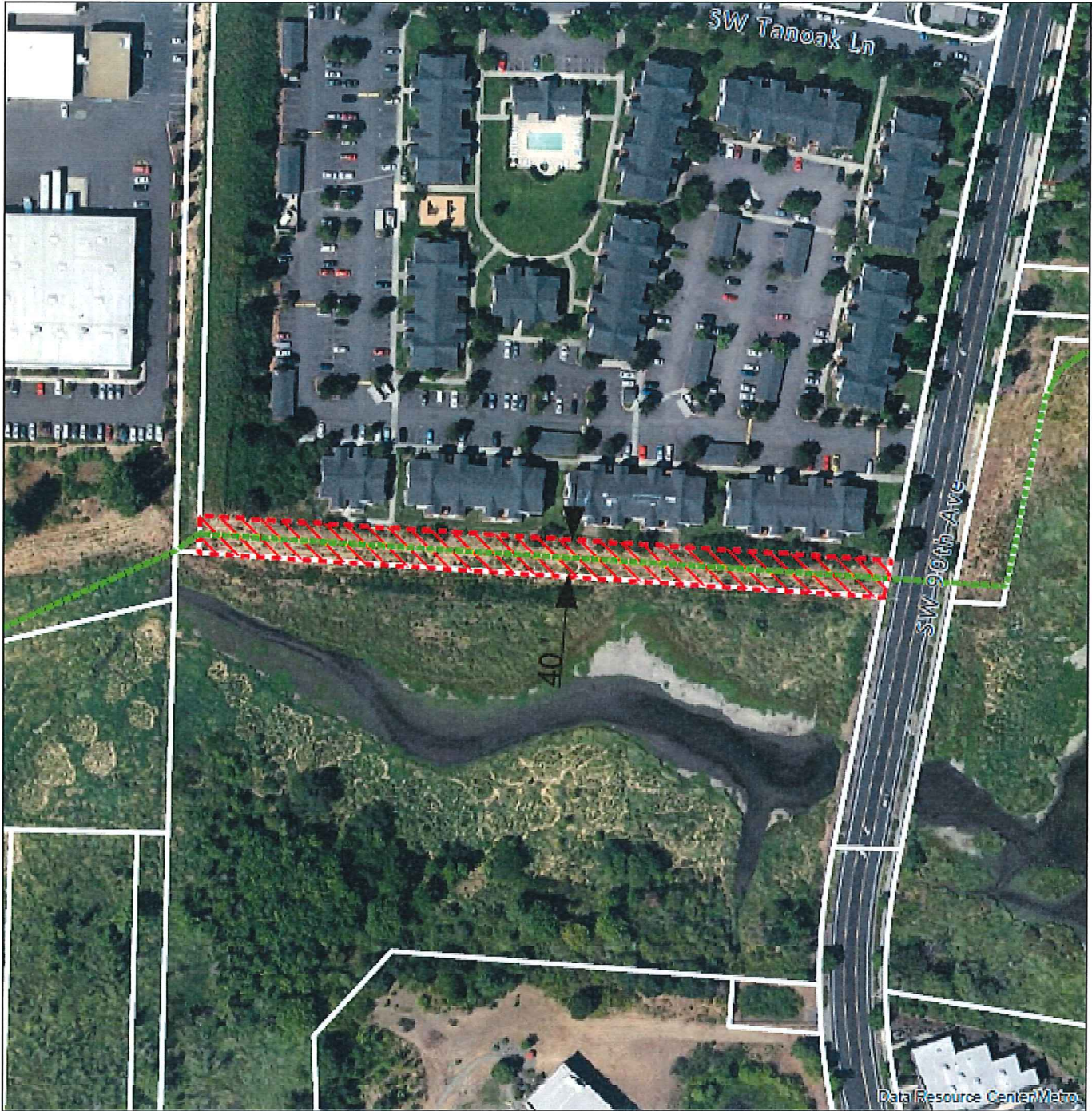
Rich Mueller, Parks and Recreation Manager

Sou Souvanny, Management Analyst II

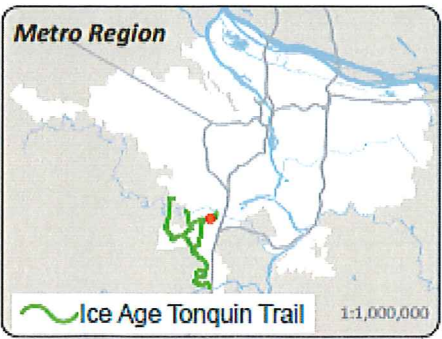


*City of Tualatin*



# Ice Age Tonquin Trail Route

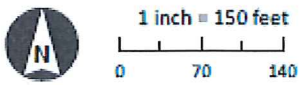


Data Resource Center/Metro



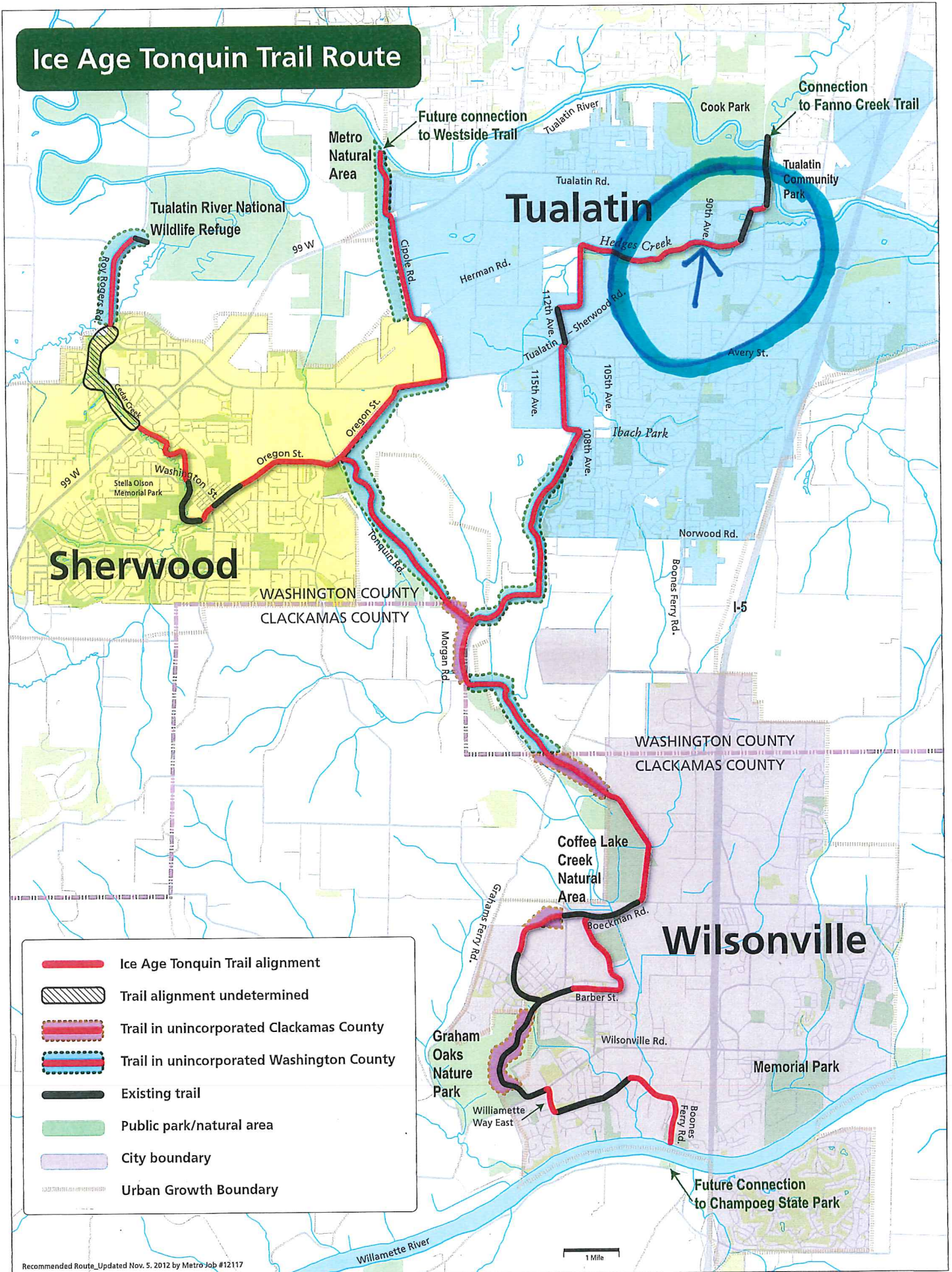
## Legend

-  Proposed Acquisition
-  Proposed Trail



Target Area:	Tonquin Geologic Area
Trail Name:	Ice Age Tonquin Trail
Tax Lot IDs:	25123AB00100
Owner:	Tualatin Meadows Apartments LP
Interest Type:	Easement
Easement Area:	29,550 square feet
Easement Width:	40
Easement Length:	735 feet

# Ice Age Tonquin Trail Route



- Ice Age Tonquin Trail alignment
- Trail alignment undetermined
- Trail in unincorporated Clackamas County
- Trail in unincorporated Washington County
- Existing trail
- Public park/natural area
- City boundary
- Urban Growth Boundary

A watercolor splash graphic in shades of blue, green, and purple, resembling a map of the state of Michigan. The word "ART" is written in white, serif, all-caps font across the center of the splash. Below it, the word "splash" is written in a purple, lowercase, serif font. Underneath "splash", the words "Art Show and Sale" are written in a purple, lowercase, serif font.

ART  
splash  
Art Show and Sale



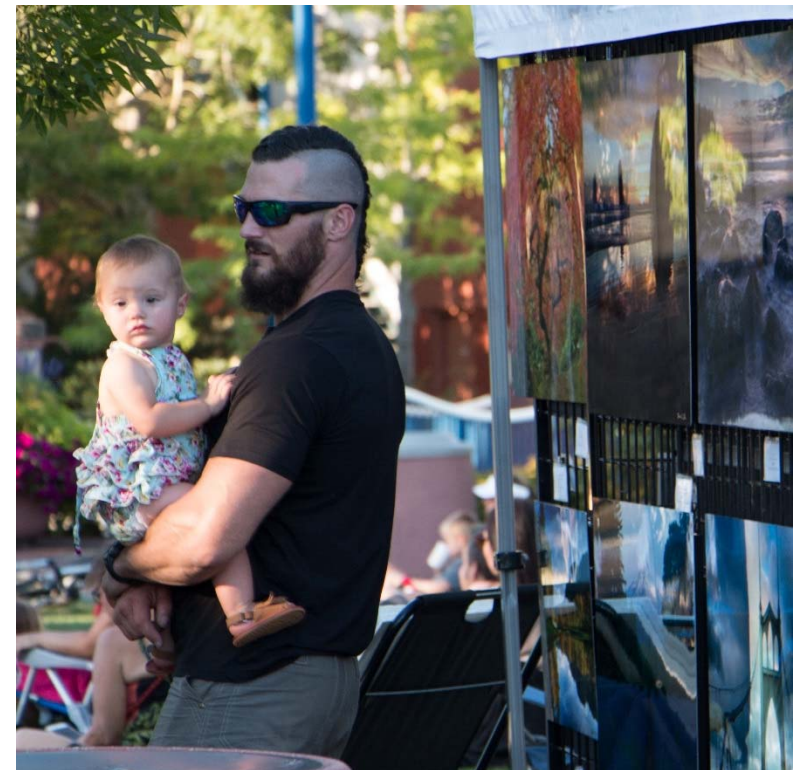
56 Northwest artists showcasing their talents in painting, jewelry, photography, glass, ceramic, wood, and more.

### Show Hours:

Friday, July 13 4 pm-9 pm

Saturday, July 14 11 am-8 pm

Sunday, July 15 11 am-4 pm



Music, food, and family activities throughout the weekend

### Friday, July 13

- Concert on the Commons featuring jazz artist *Tom Grant*



### Saturday, July 14

- Willowbrook Kids' Art Activity Tent
- Music by *Elise and Special Guest*
- Music by *Tyler Stenson*
- Concert featuring the band *We Three*
- Movies on the Commons – *Coco*



### Sunday, July 15

- Chalk it up
- Concert by *New Horizons Big Band of Tualatin*





*City of Tualatin*



CONCERTS • MOVIES • SUMMER READING • ART & MORE!

# COMMONS & PLAY 2018

SUMMER ON THE COMMONS



Tualatin Commons // 8325 SW Nyberg St.

CREATING COMMUNITY THROUGH PEOPLE, PARKS, AND PROGRAMS

CITY OF TUALATIN

SUMMER ON THE TUALATIN COMMONS // [WWW.TUALATINOREGON.GOV](http://WWW.TUALATINOREGON.GOV) // 503.691.3061



# CONCERTS ON THE COMMONS

## FRIDAY NIGHTS AT 6:30PM

- 7-06 **BEN RICE**
- 7-13 **TOM GRANT**
- 7-14 **WE THREE** (Special ArtSplash Concert, starts at 6:00pm)
- 7-20 **DEBRA ARLYN**
- 7-27 **JAYBIRD KODER ALL STAR BAND**
- 8-03 No Concert on the Commons – visit the Crawfish Festival!
- 8-10 **MY HAPPY PILL**
- 8-17 **THE PEARLS**
- 8-24 **NORMAN SYLVESTER BAND**
- 8-31 **JOHNNY LIMBO AND THE LUGNUTS**



### CONCERT TIPS

Check the website for weather related cancellations. Pets permitted on leash no longer than 6ft. Outside alcohol allowed except at the Crawfish Festival concert. No glass containers in Commons area. [www.tualatinoregon.gov/recreation/concerts-commons](http://www.tualatinoregon.gov/recreation/concerts-commons)

### SILVER SPONSORS //



### MAJOR SPONSORS //



ETHAN ALLEN



Thanks to our Concert Sponsors!



# MOVIES ON THE COMMONS

## SATURDAY NIGHTS STARTING AT SUNSET (9PM)

- 7-7 DESPICABLE ME 3 (PG)
- 7-14 COCO (PG)
- 7-21 WONDER WOMAN (PG13)
- 7-28 INCREDIBLES (PG)
- 8-11 SPIDER MAN HOMECOMING (PG13)
- 8-18 GUARDIANS OF THE GALAXY 2 (PG13)
- 8-25 BLACK PANTHER (PG13)

Movie titles are subject to change, based on availability. For more details visit: [www.tualatinoregon.gov/recreation/movies-commons](http://www.tualatinoregon.gov/recreation/movies-commons)

Come on out for free, family friendly movies at the Tualatin Commons this summer! Grab your blankets, buy popcorn from the Tualatin Youth Advisory Council, and enjoy this Tualatin summer tradition.



### BRONZE SPONSORS //

TOTE N STOW • TUALATIN FOOD STORE  
TUALATIN CRAWFISH FESTIVAL

### CHAMPIONS //

DPI SPECIALTY FOODS • INTERACTIVE NW, INC.  
MODERN PLUMBING • NEW SEASONS MARKET

### FAMILY SPONSORS //

ENTERPRISE RENT-A-CAR



### SILVER SPONSORS //



### BRONZE SPONSORS //

TOTE N STOW • TUALATIN FOOD STORE  
TUALATIN CRAWFISH FESTIVAL



# ART SHOW AND SALE

**JULY 13-15**

Come join the fun at ArtSplash Art Show and Sale at the Lake of the Commons. Over 50 Northwest artists will be showcasing their talents in watercolor, acrylic, photography, glass, oil, jewelry, ceramics, and more.

[www.tualatinoregon.gov/recreation/2018-artsplash-art-show-and-sale](http://www.tualatinoregon.gov/recreation/2018-artsplash-art-show-and-sale)

**7-13 // ARTSPLASH 4-9pm**

**CONCERT ON THE COMMONS 6:30-8:30pm // Featuring Northwest favorite Tom Grant**

**7-14 // ARTSPLASH 11am-8pm**

**PORTLAND MODEL POWER BOAT ASSOCIATION CLUB**

**FLOAT 10am-2pm**

**FREE KID'S ART ACTIVITIES 12-4pm**

**FREE MUSIC 1-5:30pm // Elyse and Special Guest and Tyler Stenson**

**FREE CONCERT 6-8pm // We Three**

**MOVIE ON THE COMMONS 9pm or dusk // Coco**

**7-15 // ARTSPLASH 11am-4pm**

**CHALK IT UP 11am-2pm // Create your own chalk masterpiece on the plaza**

**FREE CONCERT 1-3pm // New Horizons Big Band of Tualatin**



**8-04 // 10am-10pm**

**LIVE MUSIC**

**10am-12pm // Stump City Soul**

**1-3:30pm // Sister Mercy**

**4:15-6:30pm // Ken DeRouchie Band**

**7-7:45pm // Lisa Mann and Her Really Good Band**

**8:05-10pm // Ty Curtis, Ben Rice and Lisa Mann**

**CRAWFISH CRAWL**

**10pm (8/3)-10am (8/4) // Dusk to Dawn Relay**

**ACTIVITIES**

**Crawfish Eating Contest // Kids**

**Watermelon Eating Contest**

**Cornhole Tournament // Potato sack**

**Races // Crawkid Stamp Booklet //**

**Balloon animals and more!**

**VENDOR VILLAGE**

**Beer, Food and Craft Booths!**

**ALL ACTIVITIES IN TUALATIN COMMUNITY PARK**

**Presented by Columbia Bank**

**AUGUST 3-4**

**8-03 // 4-10pm**

**LIVE MUSIC**

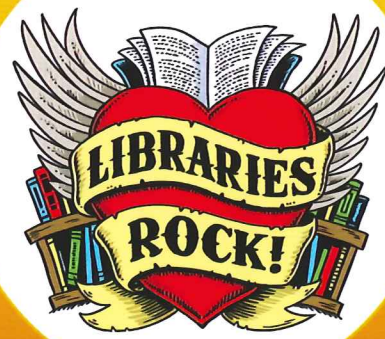
**4-5:30pm // Oxley and Joseph Blues Duo**

**6-8pm // Ramble On (Led Zeplin Tribute)**

**8:30-10pm // Stone in Love (Journey Tribute)**

**CRAWFISH CRAWL**

**10pm (8/3)-10am (8/4) // Dusk to Dawn Relay**



## SUMMER READING

**TUESDAYS AT 7PM**

Join us on the Tualatin Commons to celebrate the joy of reading at these FREE family-friendly library events:

**6-19 // THE REPTILE MAN**

Learn all about scaly critters at this thrilling show featuring more than a dozen live reptiles. Join Reptile Man Rich Ritchey for a fun and educational experience.

**6-26 // AARON NIGEL SMITH**

Kick back and listen to reggae music for kids with internationally known artist Aaron Nigel Smith.

**7-03 // KALABARATHI SCHOOL OF DANCE**

Experience the vivid and exciting world of South Indian dance presented by a troupe of dancers.

**7-10 // 1, 2, 3 ANDRÉS**

Latin Grammy Award Winner, Andrés writes and performs bilingual (English-Spanish) children's songs.

**7-17 // RHYS THOMAS**

Experience Jugglemania with Rhys Thomas, juggler and comedian extraordinaire.

**7-24 // ROCK N' ROLL WITH COREY JENKINS**

Enjoy super rad and super funny rock music for kids with musician Corey Jenks! And a dinosaur!

**7-31 // ANGEL OCASIO**

Angel Ocasio presents a family-oriented show that combines physical comedy, magic, juggling and his unique style of bilingual comedy (English-Spanish).

**8-07 // BORDER COLLIES INTERNATIONAL**

Watch some highly intelligent and well-trained dogs do amazing tricks!



**CREATING COMMUNITY THROUGH PEOPLE, PARKS, AND PROGRAMS**

**SUMMER ON THE TUALATIN COMMONS // [WWW.TUALATINOREGON.GOV](http://WWW.TUALATINOREGON.GOV) // 503.691.3061**



*City of Tualatin*

Summer Programs 2018

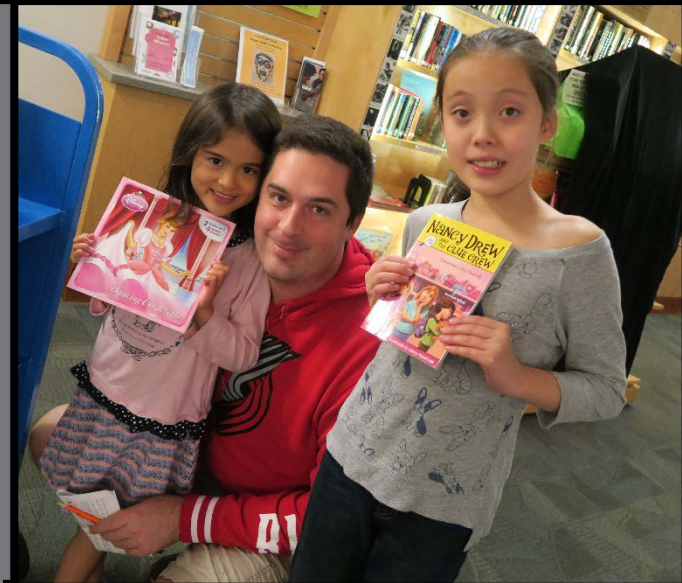
# Tualatin Public Library



Online options and an app to track your reading!

Free books for kids and teens

Summer lunch site for July and August



Weekly outreach visits to Atfalati Park including hands-on science fun



# Summer Reading at the Commons

Summer Reading fosters human development through promoting literacy & education, increases cultural unity, and creates a sense of place.



Tuesdays, June - August



Washington County  
Cooperative Library Services



# Summer Camp 2018



Six 1-week sessions  
265 kids registered  
Ages 4 yrs-5<sup>th</sup> grade





# Teen Adventure Camp



9 weeks  
18 sessions  
24 teens per day, 648 total  
100% of spots filled, with waitlists





# CONCERTS ON THE COMMONS

Every Friday night in July and August  
6:30-8:30pm





# MOVIES ON THE COMMONS



Free family-friendly movies  
Saturdays in July & August



The logo for 'ART splash' features the word 'ART' in white, bold, sans-serif capital letters, and 'splash' in a purple, lowercase, sans-serif font. The text is set against a stylized, watercolor-style map of the state of Washington, with colors ranging from light green to dark blue. The background of the entire graphic is a bright yellow.

# ART splash

3 days, 58 artists  
Live music  
Kids' art tent  
Chalk it Up



# Teen Volunteers



**TEAM Tualatin** 70 youth, 8 weeks

**Library** 40 summer Teen volunteers

**Tualatin Youth Advisory Council** 20 youth, meet weekly, help out with summer events



# Police

## National Night Out

Tuesday, August 7th

## GREAT Camp

Gang Resistance  
Education and Training

6<sup>th</sup>-8<sup>th</sup> grade students, four  
sessions

## Child Passenger Seat Safety Checks

Two more dates this  
summer



# Juanita Pohl Center

## Summer Programs for Active Older Adults

Hikes, day trips, and regional excursions

Enrichment classes

Health and fitness programs



# Recreation Partners

## **Tualatin Crawfish Festival August 3-4**

Music, food, contests, and activities

## **Tualatin Heritage Center**

Ongoing programs and events

## **Browns Ferry Park**

Kayak & canoe rentals

## **Willowbrook Arts Camp**

37<sup>th</sup> summer

## **Tigard-Tualatin Summer Lunch Program**

Community Park, Atfalati Park, Tualatin Public Library

## **YMCA, Skyhawks, Code to the Future Camps**

