



MEETING NOTICE

TUALATIN PARK ADVISORY COMMITTEE
July 12, 2016 - 6:00 PM

COMMUNITY SERVICES ADMINISTRATION OFFICE
Tualatin Community Park
8515 SW Tualatin Road

A. CALL TO ORDER

1. Roll Call

B. APPROVAL OF MINUTES

1. June 14, 2016

C. ANNOUNCEMENTS

1. Chair
2. Staff
3. Public

D. OLD BUSINESS

1. Parks and Recreation Master Plan Update
2. Park Projects Update

E. NEW BUSINESS

1. Art Walk Update
2. August Meeting

F. FUTURE AGENDA ITEMS

G. COMMUNICATIONS FROM COMMITTEE MEMBERS

H. ADJOURNMENT



DRAFT MINUTES

TUALATIN PARK ADVISORY COMMITTEE June 14, 2016

COMMUNITY SERVICES ADMINISTRATION OFFICE
Tualatin Community Park
8515 SW Tualatin Road

MEMBERS PRESENT: Kay Dix, Krista Nanton, Valerie Pratt, Stephen Ricker, Anthony Warren, Dennis Wells

MEMBERS ABSENT: Dana Paulino

STAFF PRESENT: Sherilyn Lombos, City Manager
Rich Mueller, Parks and Recreation Manager

PUBLIC PRESENT:

OTHER:

A. CALL TO ORDER

Chairperson Dennis Wells called the meeting to order at 6:07 pm.

B. APPROVAL OF MINUTES

The minutes of the May 10, 2016 meeting were unanimously approved, on a motion by Kay Dix, and seconded by Stephen Ricker.

C. ANNOUNCEMENTS

1. Chair
There were none.
2. Staff
Rich Mueller provided updates on the following: trail count numbers, volunteer park projects, Blender Dash news article, Crawfish Festival news article, Basalt Creek Concept Plan update, Wetlands Conservancy information and the Arbor Day Foundation tree board survey.
3. Public
There were none.

D. OLD BUSINESS

1. Parks and Recreation Master Plan Update
Rich Mueller distributed the master plan project framing document and committee members discussed the scope, schedule, key considerations, pre-mortem considerations and public involvement considerations. The committee input will be incorporated into the project framing document as the master plan moves forward.
2. Parks and Recreation Month
Committee members received the City Council proclamation which declares the Month of July 2016 as "National Park and Recreation Month" in the City of Tualatin.

3. Development Projects Update

The committee reviewed the site plans for Sagert Farm subdivision and River Ridge apartment complex. Rich Mueller explained that Sagert Farm is a soft surface gravel pathway along Saum Creek. River Ridge is a concrete shared use pathway with a ramp along the Tualatin River Greenway in the vicinity of Highway 99. Both pathways are in the planning stages with construction scheduled at River Ridge this month.

4. Parks Projects Update

Rich Mueller reviewed two projects which are currently in construction. The Tualatin Community Park off leash dog area has a shelter being installed during the month of June. In May replacement of the Tualatin High School stadium field began with completion scheduled in July. The high school field was originally constructed through a bond measure with the City responsible for fifty percent of the replacement cost. The dog park shelter is a City capital improvement project.

E. NEW BUSINESS

1. Building Tualatin's Future – Civic Center Presentation

City Manager, Sherilyn Lombos presented information and a fact sheet on a "Place to Call Home, Building Tualatin's Future". Ms. Lombos provided details on civic center space needs, current situation, existing conditions, site specific data, bond funding and next steps. Ms. Lombos answered member's questions as the committee discussed the options, schedule and cost of the two proposed locations. Committee members were supportive of the need, but were split on which location they preferred. There was some concern expressed about competing with the school district bond measure. Committee input on the Commons site included: enhance the Commons, increase commerce, generate revenue, center of commerce and unleased space currently exists. The police location input included: difficult traffic and cost saving, due to the City owning the land. Other comments were regarding the possible cost saving from building currently in use and what the future use of current buildings may be used for.

2. Summer Programs Preview

Rich Mueller shared a power point that recreation and library staff presented at the City Council meeting on June 13, 2016. The summer activities and events include: Summer Reading, Concerts on the Commons, Movies on the Commons, ArtSplash, adult programs, summer youth camps, volunteer projects, TEAM Tualatin volunteers, GREAT summer program, summer community partner activities and the Crawfish Festival.

3. Youth Advisory Council Annual Report

The power point presentation which the YAC seniors presented to Council on June 13, 2016 was reviewed. Highlights include the outgoing senior leadership, goals, activities, advocacy, education, Project Friends and National League of Cities Conference.

F. FUTURE AGENDA ITEMS

G. COMMUNICATIONS FROM COMMITTEE MEMBERS

Committee members requested samples of master plans from other agencies.

H. ADJOURNMENT

Dennis Wells adjourned the meeting at 7:54 pm, on a motion from Anthony Warren, with second by Valerie Pratt.

Tualatin Parks

Early Years, Modern Times, The Future

Tualatin Park Advisory Committee

July 12, 2016



City of Tualatin

Creating Community Through People, Parks, and Programs

Recreate and Socialize

Connect People with Nature

Improve Health and Wellness

Preserve and Promote Natural and Cultural History

Conservation of Natural Resources

Foster Economic Development

Equitable Access to All

Early Years

1900's to 1960's



North of Trestle, Circa 1916 – Now Community Park

Early Years

1900's to 1960's



Community Baseball Field – South of Nyberg Rd, Circa 1940

Early Years

1900's to 1960's



Private Tualatin River Parks, 1930's and 1940's

Early Years

KNOW ALL MEN BY THESE PRESENTS, That we, MELVILLE EASTHAM AND JESSIE CHASE EASTHAM, his wife, for and in consideration of ONE dollar (\$1.00) and pursuant to our desire to provide a park for the people of the City of Tualatin and the surrounding community, we do hereby grant, bargain, sell and convey unto the CITY OF TUALATIN, and it's successors, for park purposes only, the following described real property, in Washington County, Oregon:

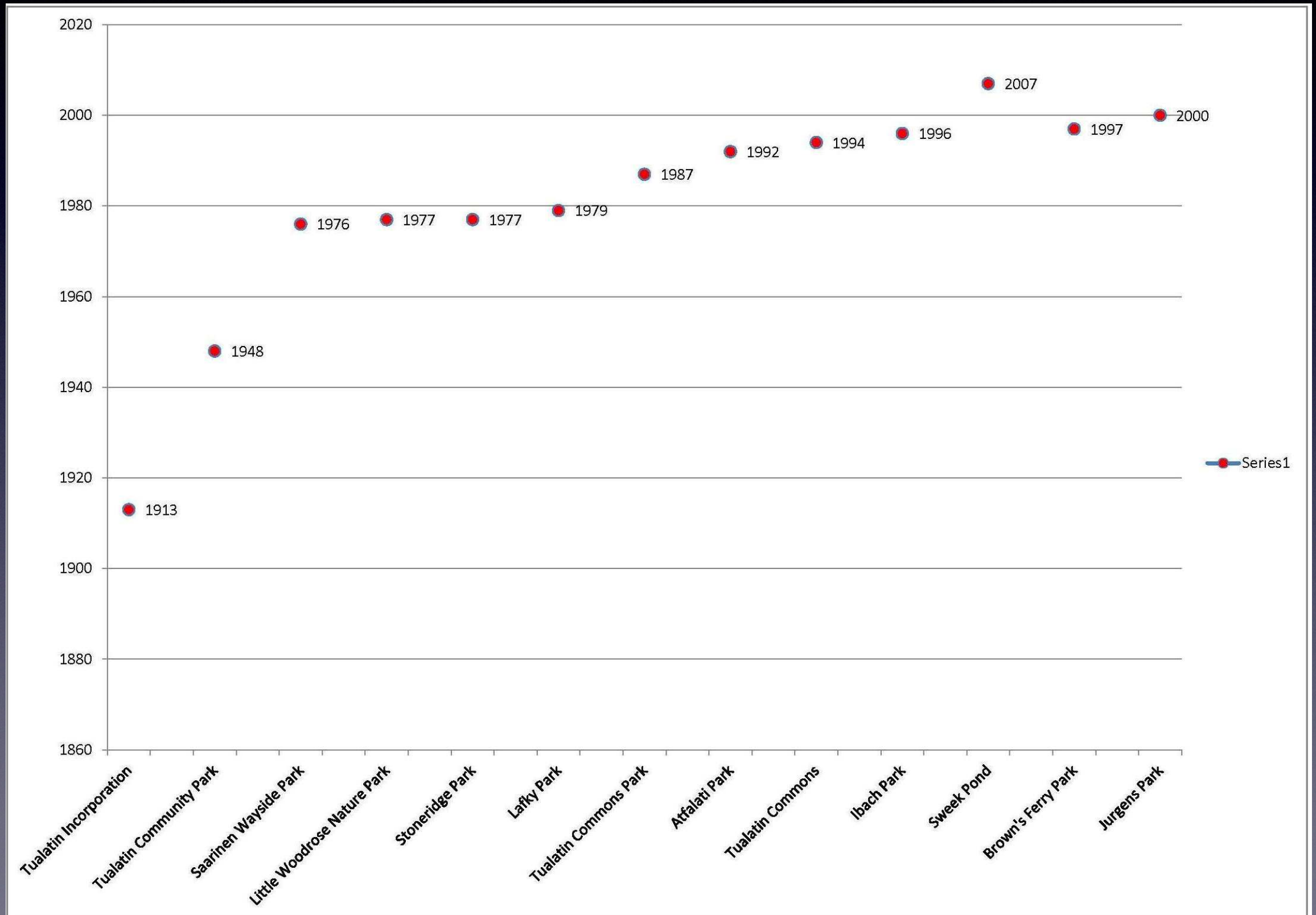
Beginning at a point on the Ea
of the Oregon Electric Railroad,



1948 City Buys Community Park, North of Trestle

Modern Times

1970's to Early 1980's



Modern Times

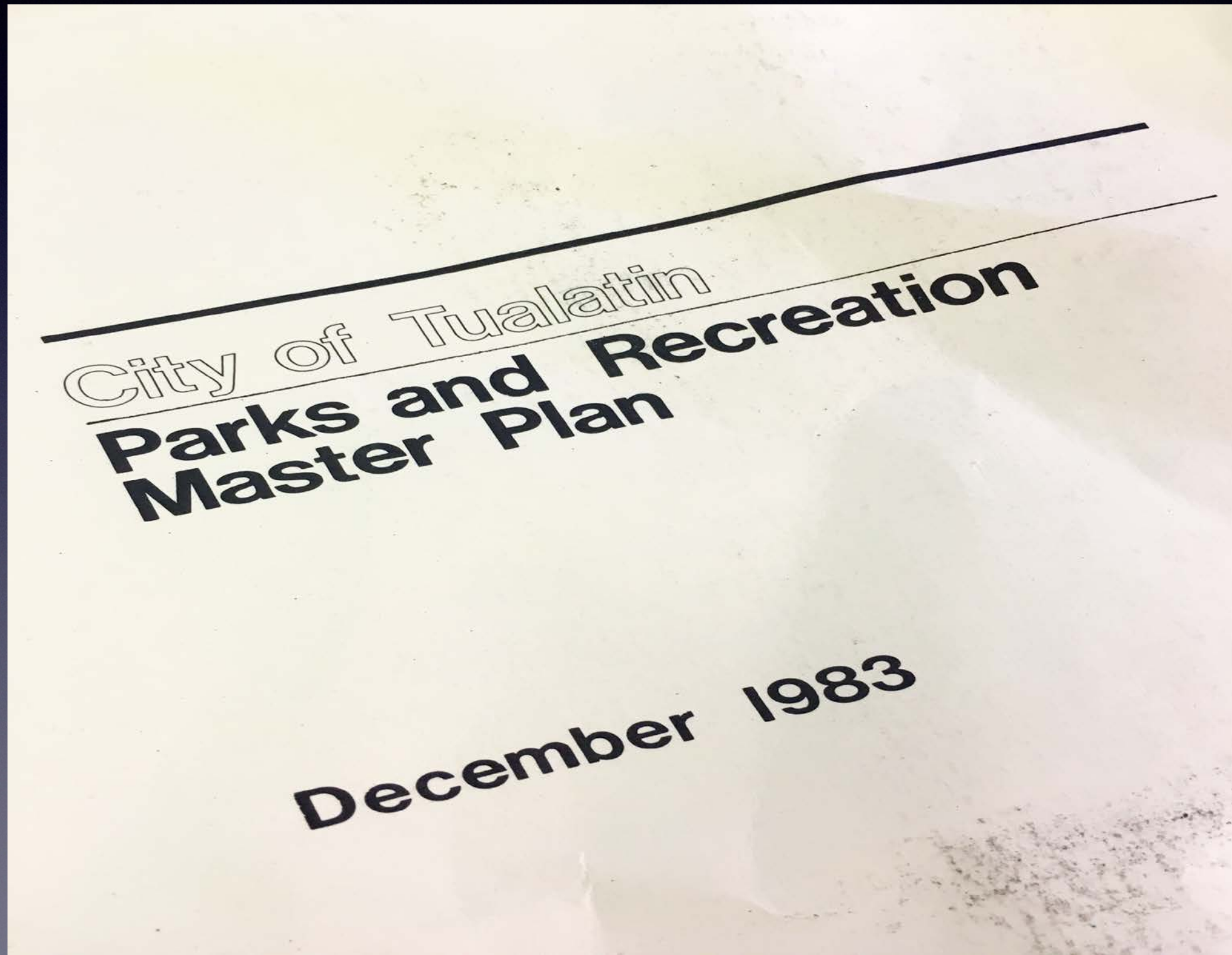
1970's to Early 1980's

Tualatin Community Park	1948
Saarinen Wayside Park	1976
Little Woodrose Nature Park	1977
Stoneridge Park	1977
Lafky Park	1979
Tualatin Commons Park	1987
Atfalati Park	1992
Tualatin Commons	1994
Ilbach Park	1996
Sweek Pond	2007
Brown's Ferry Park	1997
Jurgens Park	2000



Modern Times

1970's to Early 1980's



Modern Times

Mid 1980's to Present

Follow Parks and Recreation Master Plan

- Parks
- Natural Areas
- Greenways
- Bikeways
- Cultural Facilities, Art, Programs
- Recreation

Modern Times

Mid 1980's to Present

Financing Park Development

Investments in parks and library – about \$40M

- Park System Development Charges
- Bonds and Serial Levies
- Development – Related Conditions
- Grants
- Private Donations – Cash, Land, In-kind construction
- Gas Tax Funds
- General Fund
- Partnerships with Federal, State, Counties, Metro, Cities, Schools, Non Profits, For Profits, Property owners

Modern Times

Mid 1980's to Present

Parklands

- 290 Acres of Parklands
- 12 Parks, 6 Natural Areas
 - 8 Greenways
- 2 Joint-Use Facilities with TTSD
 - 5 Miles of Trails
 - 46 miles of Bike Lanes
- 1 Bike/Ped Bridge Over Tualatin River
 - 4 Tualatin River Access Points
 - 1 Skate Park
 - Dog Park

Modern Times

Mid 1980's to Present

Buildings

- Brown's Ferry Community Center
- Juanita Pohl Center for Older Adults
- Lafky House
- Tualatin Heritage Center
- Tualatin Public Library
- Van Raden Community Center
- Historic Walnut House

Modern Times

Mid 1980's to Present

Art & Historic Preservation

- 275 Artworks
- 50 Interpretive Elements
- 1 ArtWalk
- 1 Mastodon



Modern Times

Mid 1980's to Present

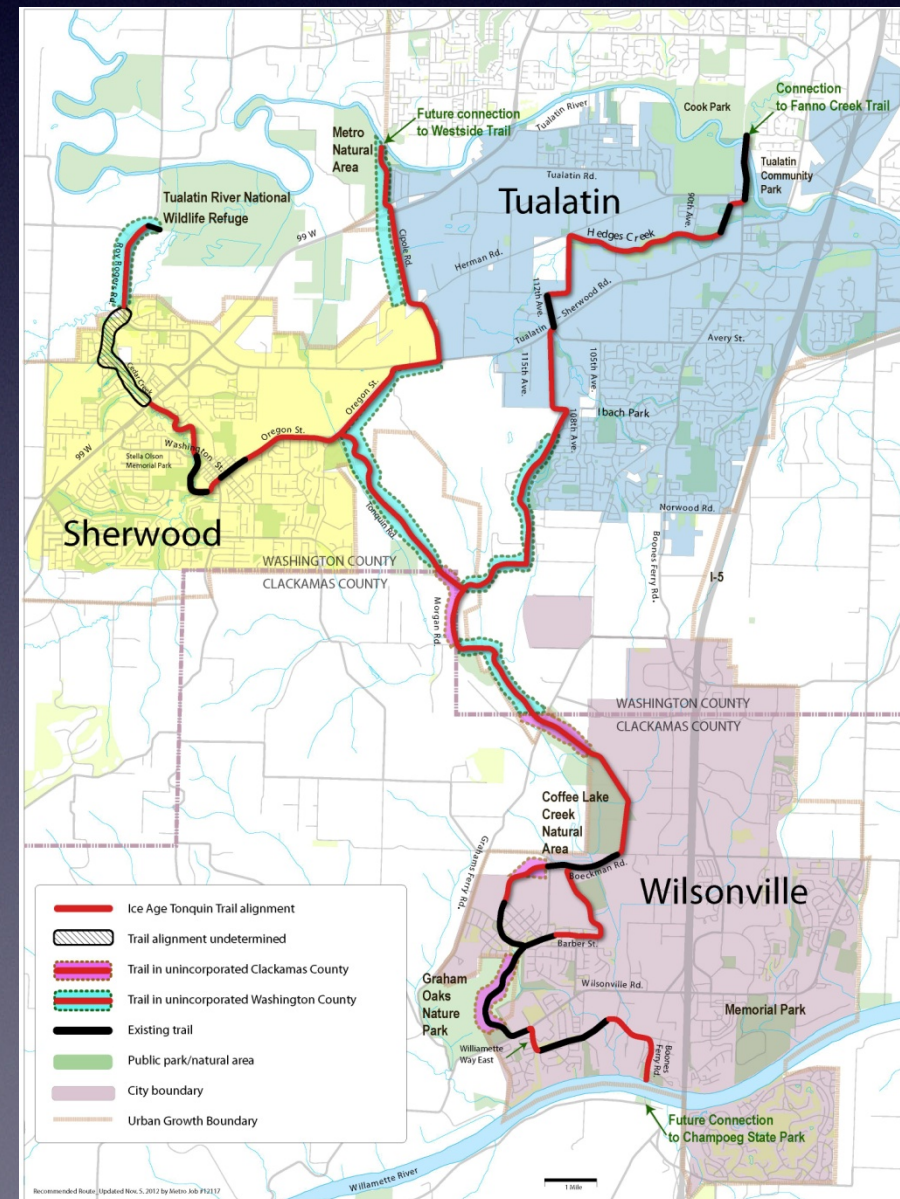
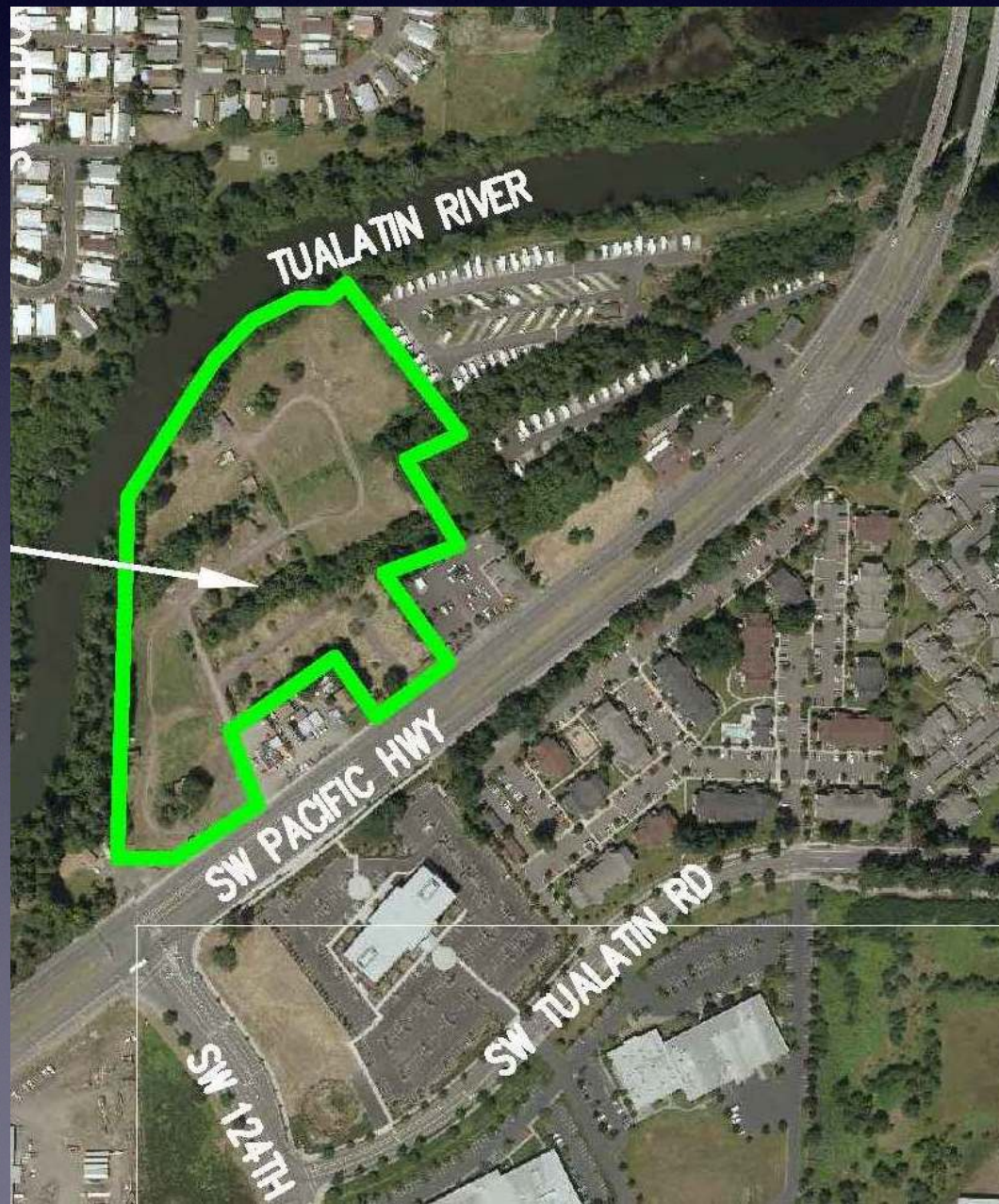
Current Projects



Modern Times

Mid 1980's to Present

Current Projects



Ice Age Tonquin Trail Route

Ice Age Tonquin Trail Master Plan

Source: Metro Data Resource Center







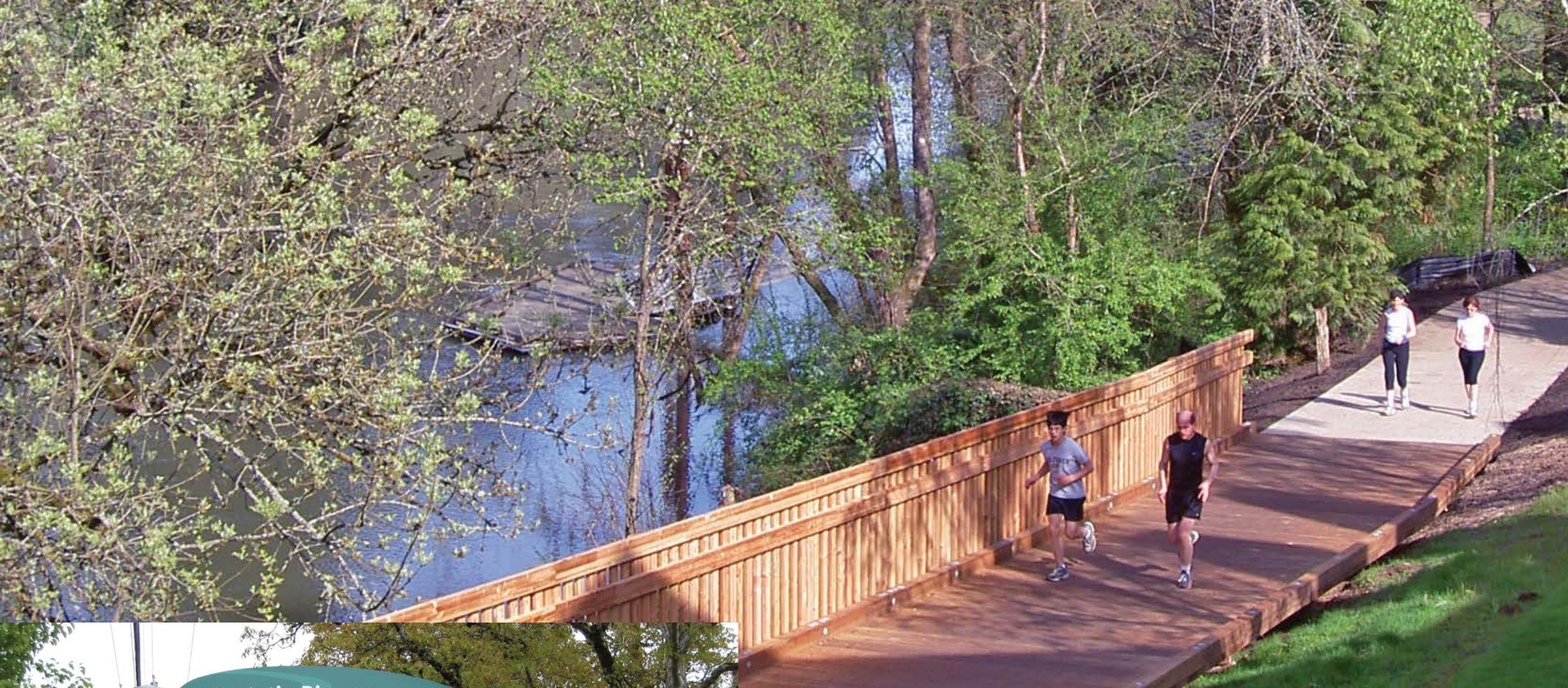






12/21/2008













CITY OF TUALATIN
City Offices
Public Library

JUANITA POHL CENTER
8513

8513



Tualatin River Greenway



THE ARTWALK

a self-guided tour of Tualatin's art, cultural and natural history



HISTORIC STRUCTURES

- A. Little White House
8101 Cassin Street
- B. Wensch House
7840 86th Avenue
- C. Mack House
8575 Tualatin Road
- D. Smith-Boone House
14275 Business Ferry Road
- E. Samsick House
1115 Business Ferry Road
- F. Samsick Store
1115 Business Ferry Road
- G. Samsick Garage
1115 Business Ferry Road

Welcome to the ArtWalk — a self-guided tour of Tualatin's diverse public art. Whether you are a local or a visitor, whether you have half an hour or an afternoon to spend, the City of Tualatin invites you to get out in the fresh air, take a healthy walk, and discover public art!

THE ARTWALK consists of several interconnected trails. Each is clearly marked — look for the map kiosks to determine the route and watch for the colorful trail markers leading the way to an enjoyable adventure discovering the art and interpretive displays of Tualatin.

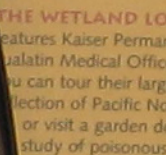


THE COMMONS LOOP takes you around the Lake of the Commons to visit an interactive fountain, poetry etched in stone, and whimsical bronze sculptures. Even the glass drinking fountains are works of art!

THE PARK LOOP takes you on a circuit of approximately one mile. It visits Community Park along the Tualatin River, interpretive panels about Tualatin's history and the flooding of the river, a student-created Skate Park Mural, artwork at the Police Services building, and a wetland trail where waterfowl can be seen year round.



The short **LIBRARY LOOP** leads you to the Council Chambers and City Offices, where Tualatin's Visual Chronicle, a collection of featured artwork is on display. This trail also passes the Tualatin Public Library, home to a monthly Brick Wall Gallery exhibit and a famous mastodon skeleton.



THE WETLAND LOOP features Kaiser Permanente's Tualatin Medical Office where you can tour their large collection of Pacific Northwest or visit a garden devoted to study of poisonous plants.

Please check business hours before parking, if you would like to see the exhibits on these loops.

Modern Times

Mid 1980's to Present

Recreation



Modern Times

Mid 1980's to Present

Recreation



Modern Times

Mid 1980's to Present

Recreation



Modern Times

Mid 1980's to Present

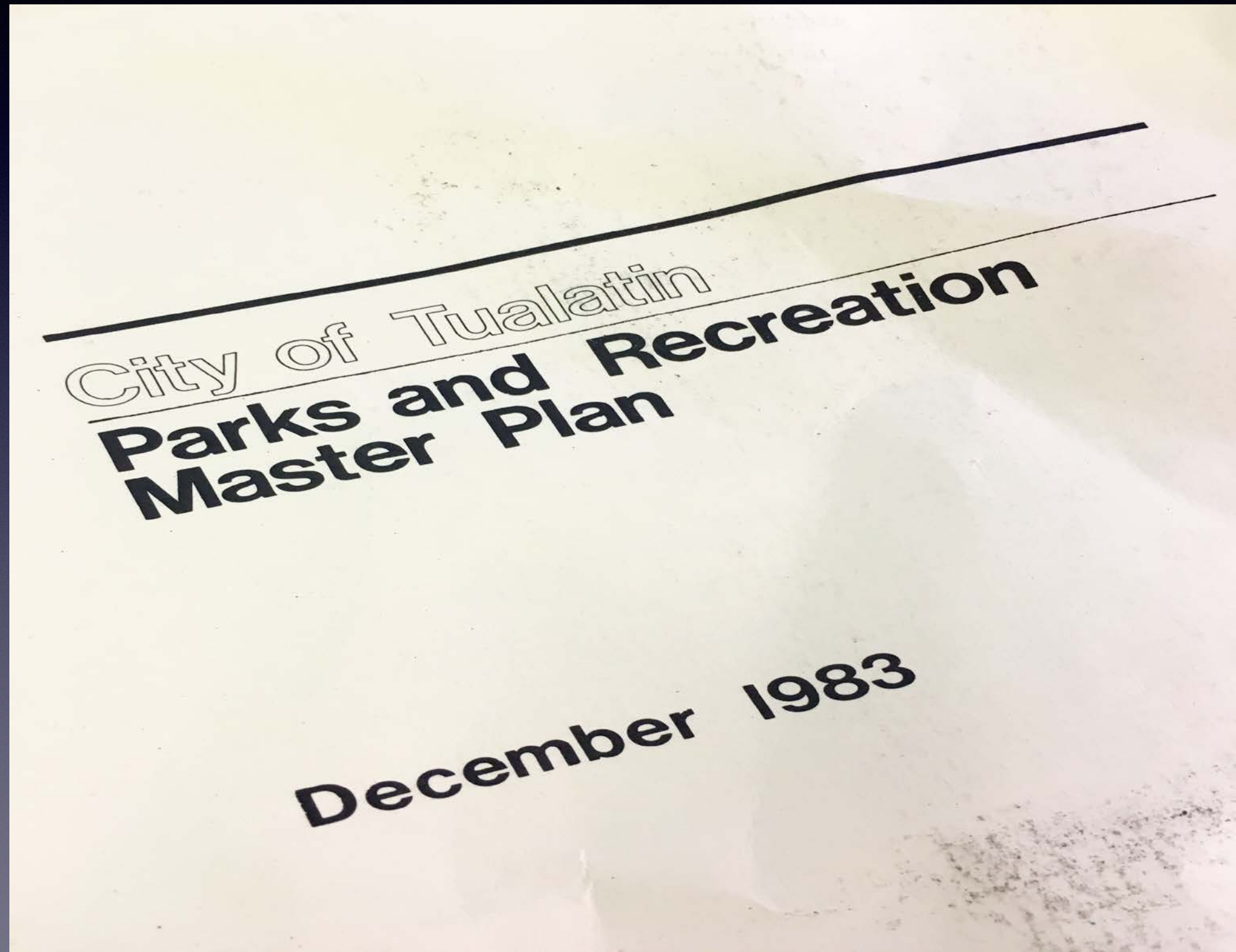
Recreation



The Future

Update
Parks and
Recreation
Master
Plan

A Plan for
the Future
Parks and
Recreation
System



The Future

Update Parks and Recreation Master Plan

To create a comprehensive Parks and Recreation Master Plan

- *Defines vision and goals*
- *Integrates best practices and standards in the field*
- *Identifies community priorities for city parks and recreation facilities*
- *Quantifies needs in the current facilities inventory*
- *Recommends solutions to meet needs*

The Future

Update Parks and Recreation Master Plan

What are your thoughts about the
future of Tualatin's Parks and
Recreation System?

Questions?

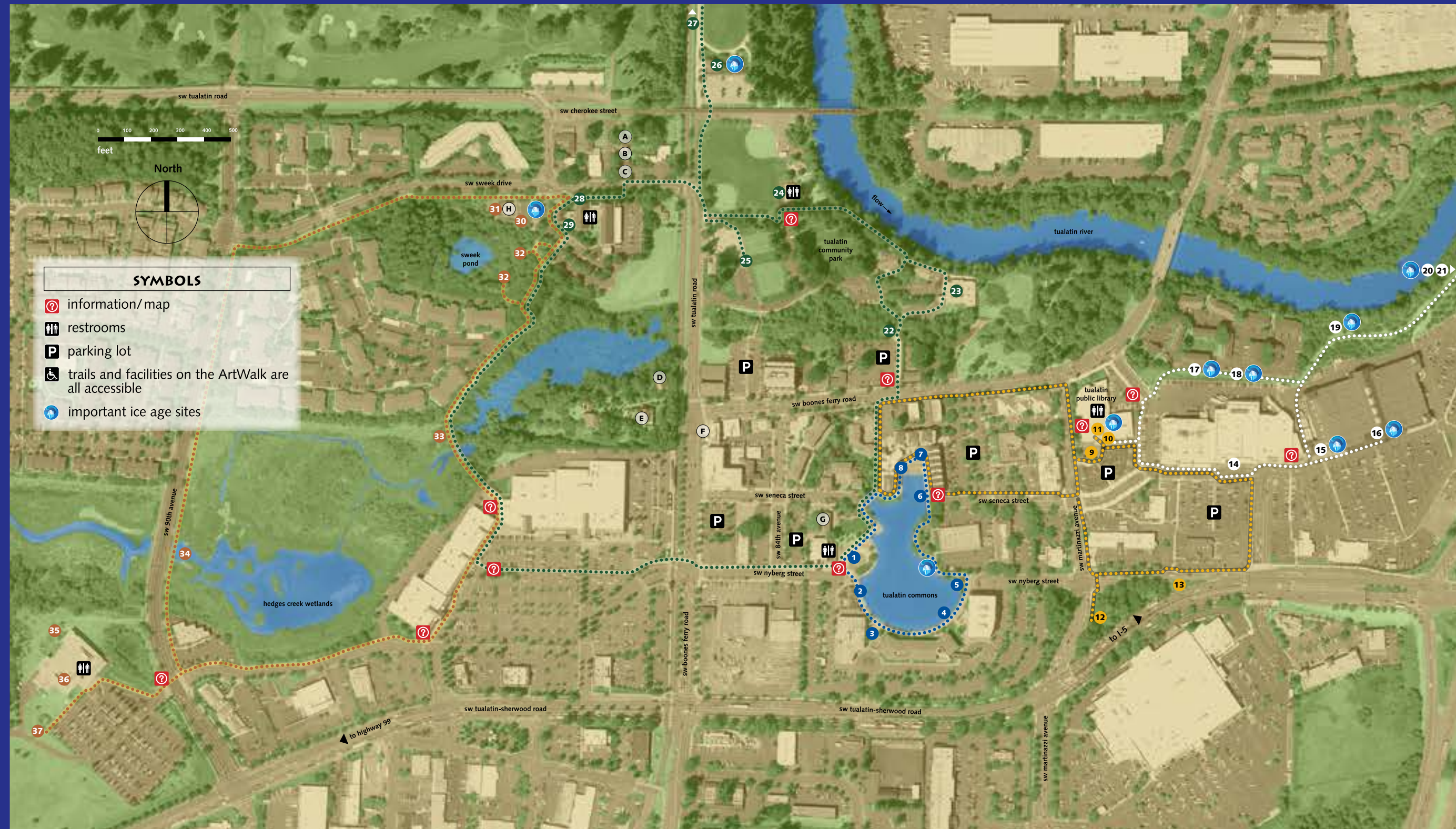


City of Tualatin

CITY OF TUALATIN ARTWALK



a self-guided tour of Tualatin's art, natural and cultural history



THE COMMONS LOOP 0.33 mile

1. Crawfish mosaic water fountain
2. Glass drinking fountain
3. Poetic history bands
4. Glass drinking fountain
5. *Sharing Ice Cream* bronze sculpture
6. Glass drinking fountain
7. *Spring Break* bronze sculpture & fountain
8. Glacial erratic

LIBRARY LOOP 1 mile

9. *Storyteller* bronze sculpture
10. Library/City Offices
- Tualatin's *Visual Chronicle* and other art
11. Tualatin mastodon skeleton
12. *The Lazy River* steel sculpture
13. *Tualatin Totem* bronze gateway sculpture

ICE AGE LOOP 0.5 mile

14. *Salmon Run* stainless steel sculpture
15. *I Wonder* bronze sculpture of mastodon
16. Ice Cave replica (inside Cabela's)
17. Path of blue seeded glass
18. Paleo Indian footprints and megafauna tracks
19. Sabertooth salmon and fossils
20. Granite flood map and erratic rocks
21. Yvonne Addington Overlook - Ice Age floods, fossils, erratics

PARK LOOP 2.8 miles

22. Hedges Creek wetlands
23. Juanita Pohl Center - Tualatin's *Visual Chronicle*
24. History of Tualatin (interpretive exhibits)
25. Tualatin skate park and mural
26. Tualatin's prehistory and sloth (interpretive exhibits)
27. Ki-a-Kuts bridge
28. *The Protector* Police bronze statue
29. Police Department - Tualatin's *Visual Chronicle*

WETLAND LOOP 1.4 miles

30. Ice Age erratics
31. Heritage Center
32. Sweek Pond overlook (interpretive exhibits)
33. Wetland trail
34. Wetland area
35. Art in the Garden
36. Kaiser Permanente's art collection
37. Kaiser Permanente's Poison Prevention Garden

HISTORIC STRUCTURES

- A. Little White House (8570 SW Cherokee Street)
- B. Wesch House (18400 SW 86th Avenue)
- C. Mack House (8575 SW Tualatin Road)
- D. Smith-Boone House (18815 SW Boones Ferry Road)
- E. Sweek House (18815 SW Boones Ferry Road)
- F. Robinson's Store (18810 SW Boones Ferry Road)
- G. Winona Grange (8340 SW Seneca Street)
- H. Heritage Center (8700 SW Sweek Drive)

FOLLOW THE SIGNS

THE COMMONS LOOP

THE PARK LOOP

THE LIBRARY LOOP

THE ICE AGE LOOP

THE WETLAND LOOP

Welcome to the **ArtWalk** — a self-guided tour of Tualatin's art, natural and cultural history. Whether you are a local or a visitor, whether you have half an hour or an afternoon, the City of Tualatin invites you to enjoy fresh air and take a walk.

* Please check business hours before embarking, if you would like to see the indoor exhibits on these loops.



The **ArtWalk** consists of several interconnected trails. Each is clearly marked — look for the map kiosks to determine the route and watch for the colorful trail markers leading the way. Inside City buildings, you will find Tualatin's *Visual Chronicle*, a rotating collection of artwork documenting the historical and current life of Tualatin.

The **Commons Loop** circles the Lake of the Commons. On the route you will visit an interactive fountain, poetry etched in stone, and whimsical bronze sculptures.



This playful bronze sculpture commemorates the site of an old pet food factory.



The **Park Loop** is 2.8 miles. You will pass Community Park with a student-created skate park mural and interpretive exhibits featuring Tualatin's history and the 1996 historic flood. Stop by the Juanita Pohl Center to see what is new in Tualatin's *Visual Chronicle*. A spur trail takes you past the giant sloth exhibit to the Ki-a-Kuts Bridge over the Tualatin River. Turn at the bronze sculpture at the Police Services building and enjoy the path through a wetland.



In Community Park, along the Park Loop, is a colorful tile mural depicting Tualatin's history. The mural, measuring two feet high and thirty feet long, is near the skate park.

The one mile **Library Loop*** presents several large art installations: a mastodon skeleton, a bronze storyteller, a 20-foot-tall metal sculpture representing the river and Tualatin's history, and a flock of bronze geese forming Tualatin's gateway.



Excavated in 1962 by two Portland State students at a site near present-day Tualatin's Fred Meyer, this mastodon skeleton is on display in the library building with interactive exhibits — feel a replica molar, fur and bone.



Just a half-mile long, the **Ice Age Loop*** is packed with icons of an ancient time. You can visit an ice cave (inside Cabela's), stand beside a young mastodon, or take a walk through geologic time along the Tualatin River Greenway Trail.



Look for this logo along the ArtWalk to discover important sites in Tualatin's Ice Age history!

The **Wetland Loop*** is 1.4-miles long and passes the Tualatin Heritage Center where you can learn about Tualatin's rich and colorful history. Along the wetland trail identify waterfowl year-round. Visit Kaiser Permanente's art collection and Poison Prevention Garden.

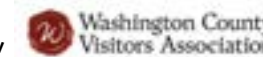


Tualatin's rich history comes alive in its old buildings. Look for historic structures along the walk.

The ArtWalk has been made possible, in part, through generous contributions by Kaiser Permanente, the Emery Zidell, H.A. "Andy" Andersen families (ZIAN, L.P.), the Tualatin Historical Society, the Tualatin Chamber of Commerce, and the Washington County Visitors Association. Kaiser Permanente's Tualatin Medical Office is located on the Wetland Loop of The ArtWalk.

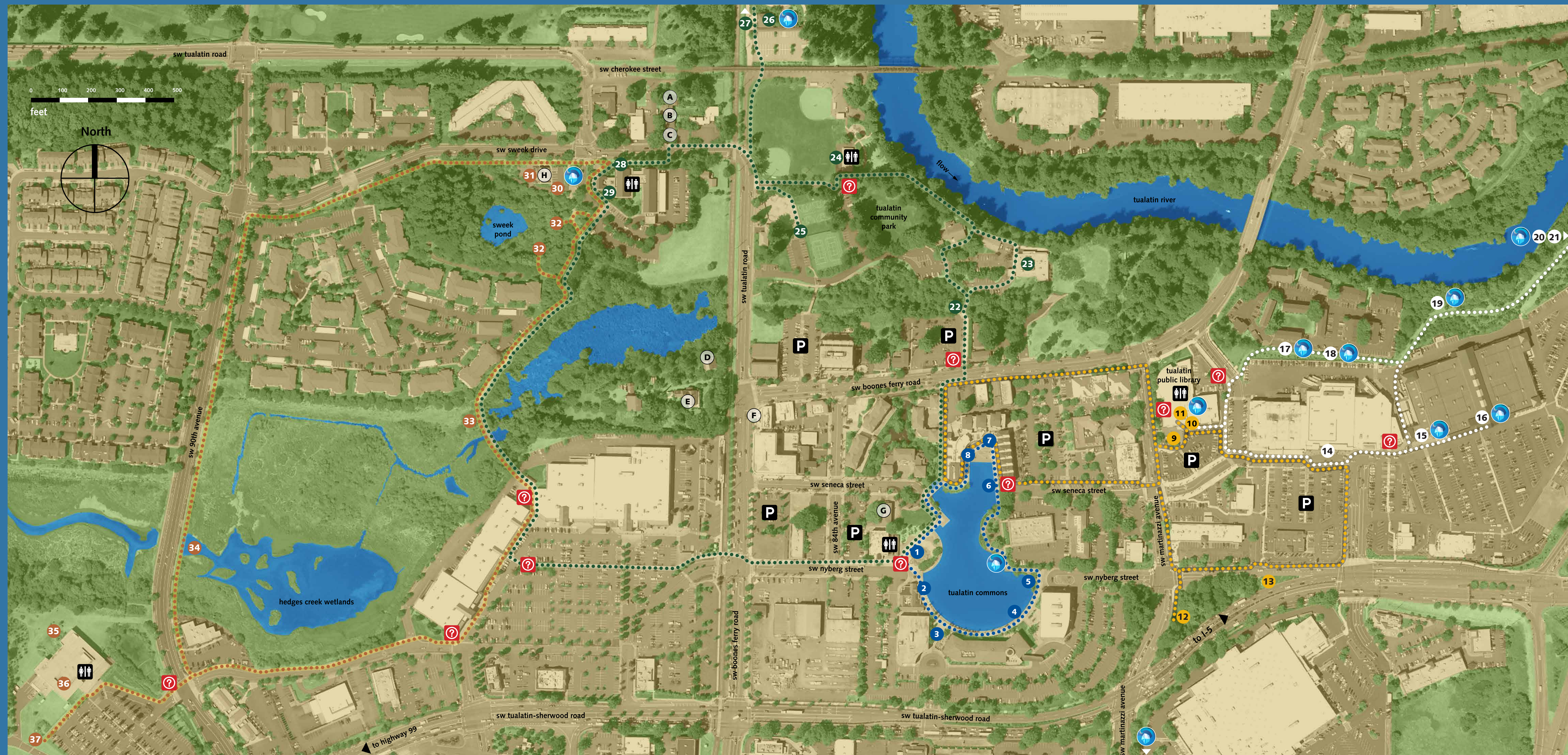


City of Tualatin,
www.tualatinoregon.gov



THE ARTWALK

A self-guided tour of Tualatin's art, cultural and natural history



THE COMMONS LOOP 0.33 mile

1. Crawfish mosaic water fountain
2. Glass drinking fountain
3. Poetic history bands
4. Glass drinking fountain
5. *Sharing Ice Cream* bronze sculpture
6. Glass drinking fountain
7. *Spring Break* bronze sculpture & fountain
8. Glacial erratic

THE LIBRARY LOOP 1.00 mile

9. *Storyteller* bronze sculpture
10. Library / City offices
- Tualatin's *Visual Chronicle** and other art
11. Tualatin mastodon skeleton
12. *The Lazy River* steel sculpture - commemorates Tualatin's 100th anniversary of incorporation
13. *Tualatin Totem* bronze gateway sculpture

THE ICE AGE LOOP 0.50 mile

14. *Salmon Run* stainless steel sculpture
15. *I Wonder* bronze sculpture of mastodon
16. Ice Cave replica (inside Cabela's)
17. Path of blue seeded glass
18. Paleo-Indian footprints and megafauna tracks
19. Sabertooth salmon and fossils
20. Granite flood map and erratic rocks
21. Yvonne Addington Overlook
- Ice Age floods, fossils, and erratic rocks

THE PARK LOOP 2.8 miles

22. Hedges Creek wetlands
23. Juanita Pohl Center - Tualatin's *Visual Chronicle**
24. History of Tualatin (interpretive exhibits)
25. Tualatin skate park and mural
26. Tualatin's prehistory and sloth (interpretive exhibits)
27. Ki-a-Kuts bridge
28. *The Protector* Police bronze statue
29. Police - Tualatin's *Visual Chronicle**

THE WETLAND LOOP 1.4 miles

30. Ice Age erratics
31. Heritage Center
32. Sweek Pond overlook (interpretive exhibits)
33. Wetland trail
34. Wetland area
35. Art in the Garden
36. Kaiser Permanente's art collection
37. Kaiser Permanente's Poison Prevention Garden

SYMBOLS

- information/ map
- restrooms
- parking lot
- trails and facilities on the ArtWalk are all accessible
- important ice age sites
- you are here

HISTORIC STRUCTURES

- | | |
|-----------------------------------------------------------|----------------------------------------------------------|
| A. Little White House
8570 SW Cherokee Street | E. Sweek House
18815 SW Boones Ferry Road |
| B. Wesch House
18400 SW 86th Avenue | F. Robinson's Store
18810 SW Boones Ferry Road |
| C. Mack House
8575 SW Tualatin Road | G. Winona Grange
8340 SW Seneca Street |
| D. Smith-Boone House
18815 SW Boones Ferry Road | H. Heritage Center
8700 SW Sweek Drive |

*Tualatin's *Visual Chronicle*:

A rotating collection of artwork documenting the historical and current life of Tualatin. Check back often to see new and interesting art. Special thanks to the Tualatin Historical Society for assistance with natural and cultural interpretive signs.

Signs for the ArtWalk have been made possible, in part, through a generous contribution by Kaiser Permanente, a health care organization serving northwest Oregon and southwest Washington. Kaiser Permanente's Tualatin Medical Office is located on the Wetland Loop of the ArtWalk. Additional funding was provided by the Emery Zidell and H. A. "Andy" Andersen Families (ZIAN, L.P); the Tualatin Historical Society, Tualatin Chamber of Commerce, and in partnership with a grant from the Washington County Visitors Association.

Welcome to the ArtWalk — a self-guided tour of Tualatin's public art and history. Whether you are a local or a visitor, whether you have half an hour or an afternoon, the City of Tualatin invites you to enjoy fresh air and take a walk.

THE ARTWALK consists of several interconnected trails. Look for maps like this one to determine the route and colorful trail markers to lead the way.



"Sharing ice cream" sculpture

THE COMMONS LOOP circles the Lake of the Commons. On the route you will visit an interactive fountain, poetry etched in stone, and whimsical bronze sculptures.

THE PARK LOOP is 2.8 miles. You will pass Community Park with a student-created skate park mural and interpretive exhibits featuring Tualatin's history and the 1996 historic flood. A spur trail takes you past the giant sloth exhibit to the Ki-a-Kuts Bridge over the Tualatin River. Turn at the bronze sculpture at the Police Services building and enjoy the path through a wetland.



Community Park skate park mural



Mastodon skeleton inside library

The one mile **LIBRARY LOOP*** presents several large art installations: a mastodon skeleton, a bronze storyteller, a 20-foot-tall metal sculpture representing the river and Tualatin's history followed by a flock of bronze geese that form Tualatin's gateway.

Just a half mile long, the **ICE AGE LOOP*** is packed with icons of an ancient time. You can visit an ice cave (inside Cabela's), stand beside a young mastodon, or take a stroll through ice age history along the Tualatin River Greenway Trail.

THE WETLAND LOOP* is 1.4-miles long, and passes Tualatin's Heritage Center where you can learn about Tualatin's rich history. Along the wetland trail identify waterfowl year-round. Visit Kaiser Permanente's art collection and their poisonous plant garden. Behind the building are colorful tile towers featuring local plants and animals.



Community art project at Kaiser Permanente



Credit: Painting by William Stout: www.williamstout.com

ICE AGE DISCOVERY

Celebrate Tualatin's Ice Age legacy. Learn about catastrophic land-sculpting floods, mastodons, and giant sloths. Did you know mastodon bones may be hiding beneath your feet? Scan this code to learn more about how the Ice Age Floods impacted Tualatin.



* Please check business hours before embarking, if you would like to see the indoor exhibits on these loops.

storyteller

By Linda Prokop, 2008

Inspired by the attentive faces of her own children listening to each new release of Harry Potter novels on audio tape, artist Linda Prokop was struck by the importance of the storyteller in bringing a story to life.



Credit: Linda Prokop

An early concept sketch of the sculpture.

Storytelling is an art and Prokop set about to capture the experience of listening to a master storyteller in this bronze.

Storyteller features a raw, expressive style of sculpting. Trace the movements of the artist's hands with your own. Can you find a spot where her thumb was? What book do you think the storyteller is reading?



City of Tualatin



Washington County
Visitors Association

Produced in partnership with a grant from
the Washington County Visitors Association

lazy river

By Joseph Rastovich, 2014



Credit: City of Tualatin, from Joseph Rastovich

Weighing nearly 4,000 pounds, this 20-foot-tall steel curving structure provokes us to think about the community's past and future. Sculptor Joseph Rastovich, only twenty-two years old when he made this piece, attached 36 plasma cut steel icons that call attention to important aspects of Tualatin's history, culture, and natural surroundings.



Credit: City of Tualatin, from Joseph Rastovich

Sculptor Rastovich welds the fins of the sculpture to the main structural piece. The Tualatin Arts Advisory Committee commissioned this sculpture in 2013 to commemorate Tualatin's centennial (1913-2013).

The shape of the sculpture is doubly clever. Its form is

reminiscent of the Tualatin River as it meanders back and forth along the valley floor. In the local Atfalati language, Tualatin means lazy river. The shape also mimics the curve of a mastodon tusk, harkening back to a time when the giant Ice Age megafauna roamed through the area.



tualatin totem

*Design by Studio Art Direct,
Sculpted by Rip Caswell, 2012*



Credit: City of Tualatin

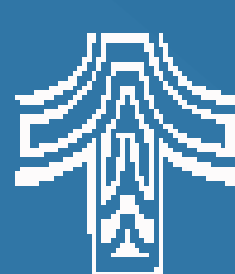
In this piece, seven geese welcome visitors and residents to Tualatin. It is designed to exemplify what makes Tualatin a community. Geese are known to work together. They take turns leading the flock and will stay with an injured member if they fall behind.

Geese frequent Tualatin's many wetlands and are regularly seen in the community's green spaces.



Credit: City of Tualatin

The design presented a challenge: just how do you attach flying birds securely enough to withstand high winds? Sculptor Rip Caswell built a model that could be tested to ensure that it could survive an extreme storm. Once engineers gave approval on the model, work began on the final art. Caswell connected the hollow geese using a piece of high-strength steel running through the wings. With clever placement these internally braced geese seem to really be flying.



City of Tualatin



Washington County
Visitors Association

Produced in partnership with a grant from
the Washington County Visitors Association

salmon run

By Ivan McLean, 2014

Artist Ivan McLean enjoys working with nontraditional materials. By employing the unexpected, his pieces have a fun and unusual look.



Credit: Ivan McLean

Spoons, knives, and forks were joined together to form the shape of the salmon.

In *Salmon Run*, McLean used thousands of stainless steel spoons, forks, and knives to create a school of salmon swimming up a river—playfully appropriate art for adorning a grocery store!

The shiny silverware flashes in sunlight—in much the same way the silver scales on salmon flicker as they move in the water.



City of Tualatin



Washington County
Visitors Association

Produced in partnership with a grant from
the Washington County Visitors Association

I wonder...

By Brian Keith, 2014



Credit: Charles M. Knight

How do you sculpt an animal that hasn't existed for thousands of years? Brian Keith had to conduct extensive research and solicit the help of professional archaeologists to ensure that the mastodon sculpture looked realistic.

Although massive compared to the statue of the boy, this 9-foot long, 2,500 pound sculpture represents a slightly smaller than life-size juvenile mastodon.

In addition to making sure the sculpture looked accurate, Keith's challenge was to make the mastodon come to life. Sculpting the mastodon's coarse hair, extended trunk, and adventurous expression in bronze took skill, patience, and numerous attempts before getting it right.



City of Tualatin



Washington County
Visitors Association

Produced in partnership with a grant from
the Washington County Visitors Association

ice cave

By Cabela's, 2014

Located in Cabela's, near the back of the store and beneath a rocky outcropping, is a dark cave with secrets thousands of years in the making. Inside the cave are replicas of



Credit: Mike Full

fossils found in the South Yamhill River near McMinnville: bones from a mastodon, bison, mammoth, and a Harlan's ground sloth. Further exploration may reveal an even greater surprise in the dark recesses... Additionally, a replica of an adult mastodon tusk is on display above the store's main fireplace.

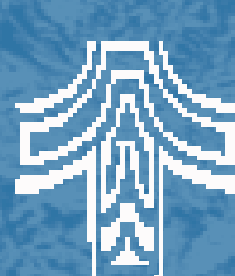


Credit: Mike Full

(above) Students mix a two-part resin and carefully fill a mold of a mammoth tusk.

(left) Starting from dark to light colors, middle schoolers used a dry brush technique to paint the castings to match the original fossils.

A team of artists worked for months to fabricate the icy mountain and its hidden cave. Of Cabela's 60-plus locations nationwide, the Tualatin store is the only one with a wintry theme. The true stars, however, are the teens behind the fossil castings. A talented group of local middle school students created the molds, cast the replicas, and then painted the replicas to look identical to the original fossils.



City of Tualatin



Washington County
Visitors Association

Produced in partnership with a grant from
the Washington County Visitors Association