



MEETING NOTICE

TUALATIN PARK ADVISORY COMMITTEE
May 10, 2016 - 6:00 PM

COMMUNITY SERVICES ADMINISTRATION OFFICE
Tualatin Community Park
8515 SW Tualatin Road

A. CALL TO ORDER

1. Roll Call

B. APPROVAL OF MINUTES

1. April 5, 2016

C. ANNOUNCEMENTS

1. Chair
2. Staff
3. Public

D. OLD BUSINESS

1. Annual TPARK Report to City Council
(Dennis Wells)
2. Tualatin River Greenway Trail Grand Opening and Ribbon Cutting
(Committee Members)
3. Basalt Creek Open House
(Kay Dix)
4. Parks and Recreation Master Plan Update
(Rich Mueller)

E. NEW BUSINESS

1. Parks and Recreation Month
(Rich Mueller)
2. Smoke and Tobacco Free Policy Implementation
(Rich Mueller)
3. Dog Park Shelter
(Rich Mueller)
4. High School Stadium Field Replacement
(Rich Mueller)

F. FUTURE AGENDA ITEMS

G. COMMUNICATIONS FROM COMMITTEE MEMBERS

H. ADJOURNMENT

FUN FACTS ABOUT THIS TRAIL

- 33 years ago (1983) Parks and Recreation Master Plan started planning for this trail
- 23 years ago (1993) the City acquired the land north of Forest Rim Apartments
- 9 years ago (2007) the City acquired land rights north of Nyberg Woods shopping center
- 2 years ago (2014) the City acquired land rights north of Nyberg Rivers shopping center
- 1 year ago (2015) the City acquired land rights under I-5
- Trail opened officially for public use on February 23, 2016

Partners and Funding

- State of Oregon, *ConnectOregon* V Program \$1,585,800
- Washington County, Major Streets Transportation Improvements Program (MSTIP) \$750,000
- CenterCal Properties, LLC \$600,000
- Metro Parks and Natural Areas \$123,860
- Washington County Visitors Association \$86,000
- Oregon Public Health Institute, HEAL Cities Program \$3,200
- Tandem Property Management LLC In-kind construction access and staging
- Tualatin Arts Advisory Committee \$5,625
- City of Tualatin, Park System Development Fees \$700,870

Tualatin River Greenway Activities in the Month of April

April 9, 10:30 am- 12:00 pm

Nature on the Tualatin River, Wildlife from the Paddler's Perspective by Tualatin Riverkeepers at Tualatin Heritage Center

April 15, 11:00 am- 12:00 pm

Active Adult Trail Walk at Juanita Pohl Center

April 16, 9:00 am

Tualatin River Greenway Geocaching Challenge Kick-Off
Tualatin Public Library

April 17, 2:00- 3:00 pm

Audubon Society Raptor Walk
Meet at Tualatin Public Library lobby

April 21, 7:00- 8:00 pm

Where Giant Mammals Roamed
By David Ellingson at Tualatin Heritage Center

April 23, 1:00- 4:00 pm (drop in)

Casting Fossils by Mike Full at Tualatin Public Library (in partnership with Tualatin Historical Society)

The total cost was approximately \$3,862,000

Design and Construction

Concrete on grade with recycled plastic lumber boardwalks

- Design by Cardno
- Interpretive elements by Alta Planning + Design and Sea Reach LTD
- Construction by Brown Contracting Inc.



April 23, 3:00- 4:00 pm

Make a Fossil Cast! (craft activity)
Tualatin Public Library

April 28, 5:30 pm

Tualatin Discovery Run
Meet at Roadrunner Sports
discoveryrun.eventbrite.com

April 30, 2:00 pm

Tualatin's First People by David Lewis, Tualatin Public Library (in partnership with Tualatin Historical Society)

Activities Throughout April on Your Own...

Scavenger Hunt

Pick up brochure and claim prizes at Tualatin Public Library!

Tualatin River Greenway Geocaching Challenge

After completing, pick up geocoin at Tualatin Public Library. For more information and to register: www.geocaching.com.



TUALATIN RIVER GREENWAY BICYCLE AND PEDESTRIAN SHARED USE PATH

Grand Opening and Ribbon Cutting Ceremony

April 9, 2016 at Barngrover Way

Across from the Tualatin Public Library



Schedule of Events

8:00 am The Times Trail Trekker 5K Run/Walk

Meet at Barngrover Way

9:00-11:30 am Arbor Week Tree Planting

Meet at Nyberg Woods shopping center east of Best Buy

12:00 pm Commemorative Heritage Tree Planting

Meet at Barngrover Way

1:00-1:30 pm Grand Opening and Ribbon Cutting Ceremony

Welcome

Dennis Wells, Tualatin Park Advisory Committee (TPARK) Chair

Introductions, Comments, and Dedication of Yvonne

Addington Overlook

Mayor Lou Ogden

Comments

Matt Garrett, Director, Oregon Department of Transportation

Drum Performance

The Confederated Tribes of the Grand Ronde

Ribbon Cutting Ceremony

1:30-3:30 pm Family Scavenger Hunt and Craft Activities

Meet at Barngrover Way

2:00- 3:00 pm A Walk Through Geologic Time Interpretive Walks

Meet at Barngrover Way

2:30-3:30 pm Bird Walk with Naturalist

Meet at Barngrover Way

2:30-3:30 pm Terra Tempo Ice Age Safari and Missoula Floods

Meet at Tualatin Public Library

An educational journey for the whole family!

Free commemorative bandanas for everyone attending.

For more information visit www.tualatinoregon.gov/recreation. Or call 503-691-3061

Tualatin

geographic name

Tu-a-la-tin |

\ tü-'ä-lä-ten

: city NW Oregon. A nice place to live, work, and play. Pop 26,590

River

noun | **river** | **\ 'ri-vər**

: a large natural flow of water that crosses an area of land and goes into an ocean, a lake, etc. The 80-mile-long Tualatin River meanders slowly from the Coast Range to the Willamette River.

Greenway

noun | **green.way** |

\ 'grēn-'wā

a corridor of undeveloped land to preserve the scenic value of the Tualatin River, enhance water and air quality, provide fish and wildlife habitat, and enable recreational and commuter use from Tualatin's western to eastern boundary.



CITY OF TUALATIN

The Tualatin River Greenway Trail

is a ¾ mile long bicycle and pedestrian facility that promotes active, healthy living while connecting people with nature. The trail meanders through stately trees, provides beautiful views of the Tualatin River, skirts the edge of a bird-filled wetland, and crosses under Interstate 5. The trail provides a safe bike and pedestrian alternative to driving while improving connectivity between residential and commercial areas with public facilities, such as parks and the library. The trail promotes safety by enabling a safe and interesting alternative to crossing over Interstate 5 at the Nyberg Street bridge.

The trail fills a gap in a 4.7 mile segment of the Tualatin River Greenway that is located on the north and south sides of the Tualatin River while running through the cities of Tualatin, Durham, and Tigard. The trail connects four major parks and crosses the Tualatin River at the Ki-a-Kuts Bicycle and Pedestrian Bridge at the north end of Tualatin Community Park. New wayfinding signs guide people to and along the trail.

Nature conservation is an important benefit of this project. More than two acres along the south bank of the Tualatin River have had invasive non-native

plant species removed and were replanted with trees and shrubs to improve water quality, fish and wildlife habitat, soil conservation, air quality, and natural beauty.

The Tualatin City Council named a peaceful, tree-lined overlook along the trail at the edge of the Tualatin River after Yvonne Addington in honor of her contributions to the

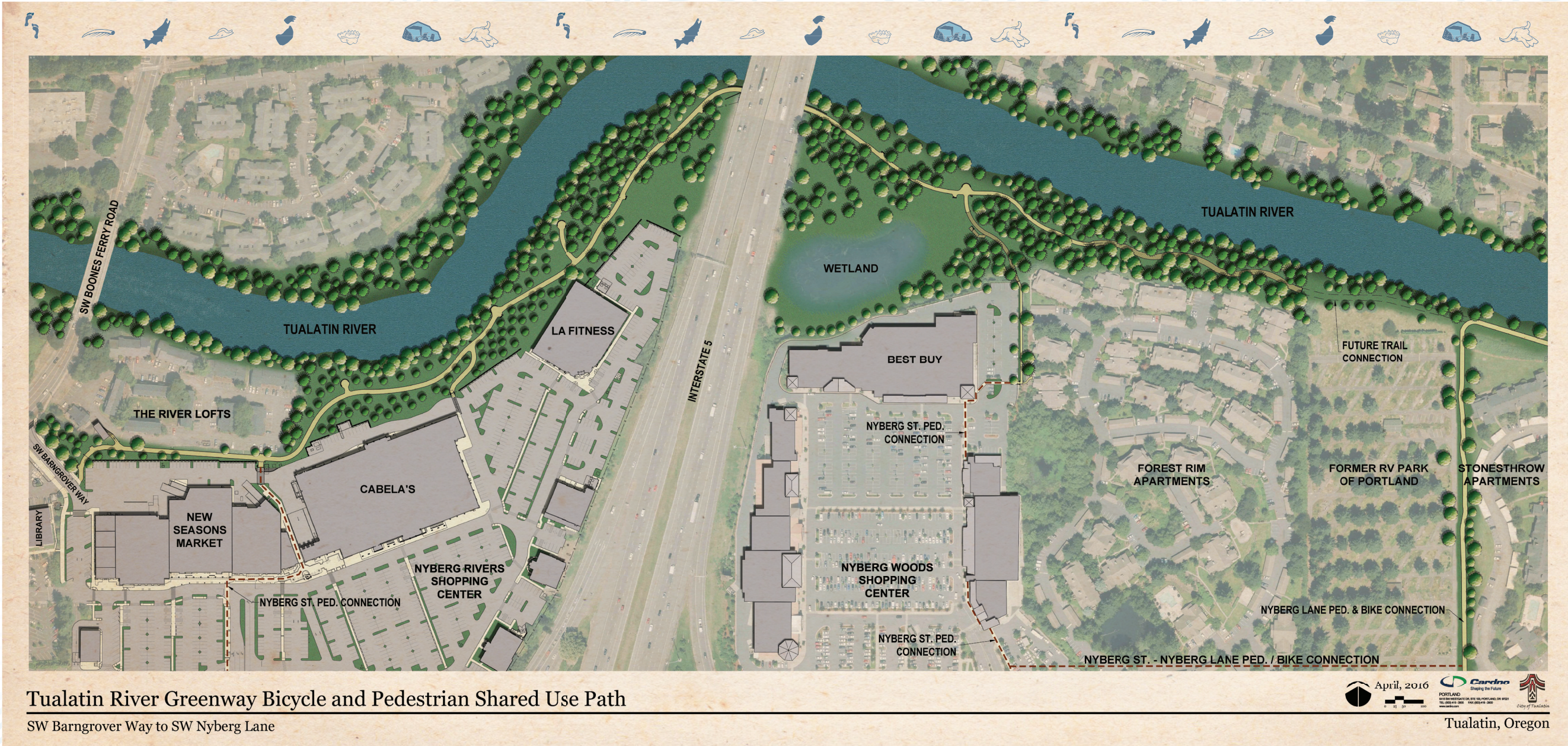
mission and purposes of parks and recreation in the City of Tualatin. Yvonne served as Tualatin's first City Administrator between 1969 and 1982 and continues to serve through her passionate and effective volunteerism with the City of Tualatin, Tualatin Historical Society, and other public and private organizations.

Educational interpretive elements along the path enable people to experience a walk through geologic time while discovering, exploring, and learning about the last Ice Age Missoula Floods, Pleistocene megafauna of the Willamette and Tualatin valleys, the emergence of Paleo-Indians, transportation improvements of early settlers, and how land uses transform over time.



This trail project has received an Excellence in Sustainability Award for Green Infrastructure
from the American Planning Association in April 2016.

This award honors green infrastructure projects that utilize sustainable principles in planning, implementation or preservation, and operations.



Tualatin River Greenway Bicycle and Pedestrian Shared Use Path

SW Barngrover Way to SW Nyberg Lane

FUN FACTS ABOUT THIS TRAIL

- The new trail segment is ¾ of a mile long
- Each step between Barngrover Way and I-5 represents 25 years in geologic time
- The boardwalk decking is made out of 100% recycled plastic
- The boardwalk decking has 67,602 screws
- The trail features 5 overlooks and 9 benches
- The trail features 2+ acres of nature conservation with 3,765 trees and shrubs
- 1,700 pounds of seeded glass was used within the concrete to represent the end of the last Ice Age
- 160 foot crossing under I-5



Rich Mueller

Subject: Basalt Creek Concept Plan - April Notice of Upcoming Meetings



Calendar Information:

April 28th, 2016,

Basalt Creek Concept Plan Open House

5:30 – 7:30 pm at the Juanita Pohl Center ([8513 SW Tualatin Road](#), Tualatin, OR)

News Information:

Basalt Creek Concept Plan Open House

You are invited to a Basalt Creek Open House. The event will be held **April 28th, 2016, from 5:30 – 7:30 pm** at the Juanita Pohl Center ([8513 SW Tualatin Road](#), Tualatin, OR)

Come learn about the preferred land use plan, parks and open space, pedestrian, bike and transit networks. The project team will be available to answer questions.

To learn more about this project please visit the project website at www.basaltcreek.com

Zoe Monahan

Management Analyst

City of Tualatin | Community Development

18880 SW Martinazzi Avenue

Tualatin, OR 97062-7092

503.691.3020 | Fax: 503.692.0147

www.tualatinoregon.gov

(Print on official certificate or letterhead.)

Designation of July as Park and Recreation Month

WHEREAS parks and recreation programs are an integral part of communities throughout this country, including ____ (insert name of city or county) ____; and

WHEREAS our parks and recreation are vitally important to establishing and maintaining the quality of life in our communities, ensuring the health of all citizens, and contributing to the economic and environmental well-being of a community and region; and

WHEREAS parks and recreation programs build healthy, active communities that aid in the prevention of chronic disease, provide therapeutic recreation services for those who are mentally or physically disabled, and also improve the mental and emotional health of all citizens; and

WHEREAS parks and recreation programs increase a community's economic prosperity through increased property values, expansion of the local tax base, increased tourism, the attraction and retention of businesses, and crime reduction; and

WHEREAS parks and recreation areas are fundamental to the environmental well-being of our community; and

WHEREAS parks and natural recreation areas improve water quality, protect groundwater, prevent flooding, improve the quality of the air we breathe, provide vegetative buffers to development, and produce habitat for wildlife; and

WHEREAS our parks and natural recreation areas ensure the ecological beauty of our community and provide a place for children and adults to connect with nature and recreate outdoors; and

WHEREAS the U.S. House of Representatives has designated July as Parks and Recreation Month; and

WHEREAS ____ (city/county) ____ recognizes the benefits derived from parks and recreation resources

NOW THEREFORE, BE IT RESOLVED BY ____ (name of governing body) ____ that July is recognized as Park and Recreation Month in the (city/county of ____).

(Add sections for official seal, signature(s) and date.)

City of Tualatin's Outdoor Facilities are Smoke and Tobacco Free beginning May 31, 2016

What activity is prohibited?

Smoking, vaping, e-cigarettes, chewing tobacco



Where?

On all City owned and managed properties, including:

- Parks
- Trails
- Tualatin Commons
- City parking lots
- Library plaza
- Sidewalks and landscaped areas adjacent to City property



Questions?

www.tualatinoregon.gov/communityservices/smoke-free-city-spaces-policy

Rich Mueller, Parks and Recreation Manager

rmueller@ci.tualatin.or.us

503.691.3064





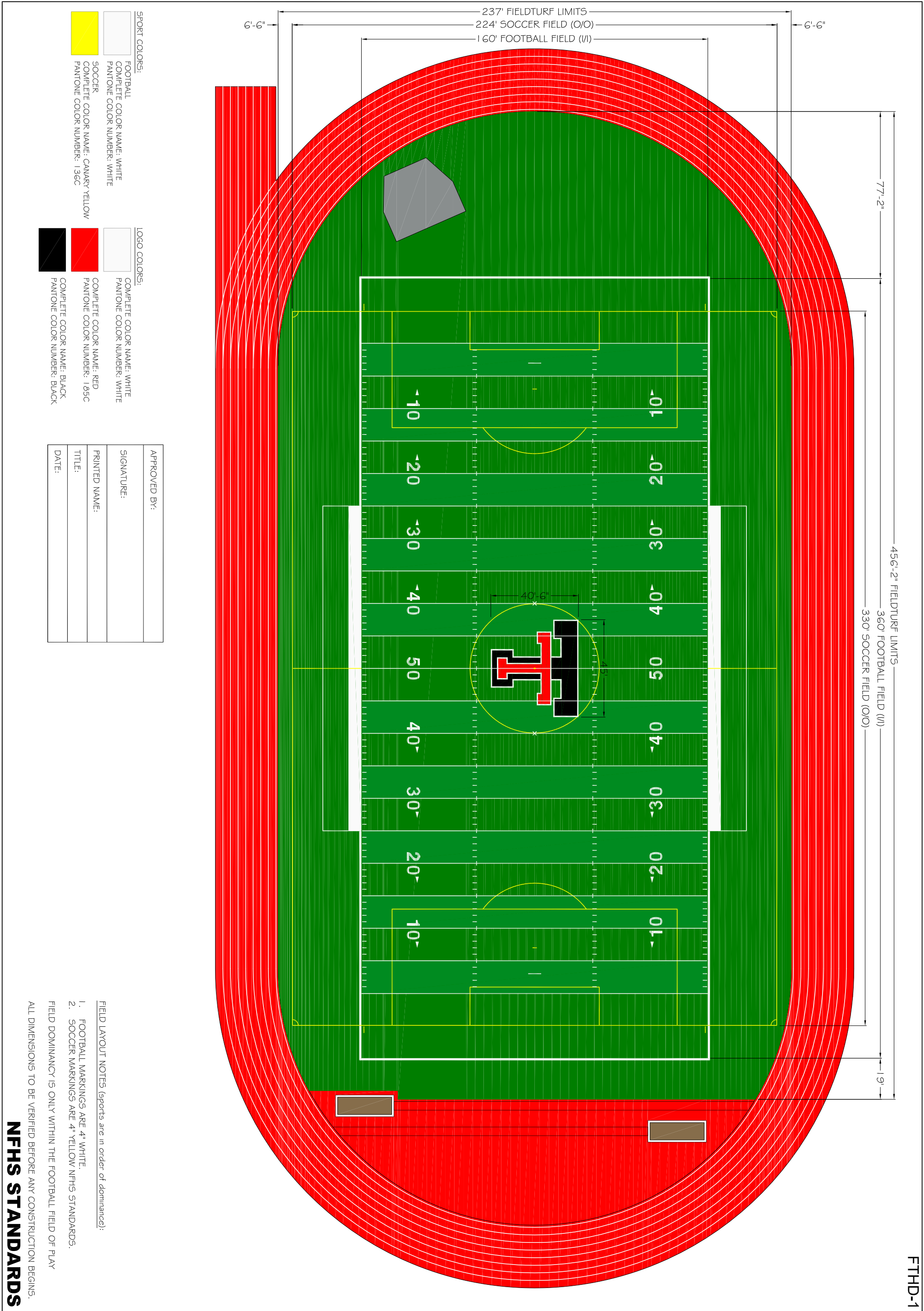
City of Tualatin



Great News!

The City has purchased a shelter for this dog park for your enjoyment. It has been ordered and is being built now.

For further information, contact Rich Mueller at 503 691-3064 or rmueller@ci.tualatin.or.us.



SPORT COLORS:

FOOTBALL
COMPLETE COLOR NAME: WHITE
PANTONE COLOR NUMBER: WHITE

SOCCER
COMPLETE COLOR NAME: CANARY YELLOW
PANTONE COLOR NUMBER: 136C

LOGO COLORS:

COMPLETE COLOR NAME: WHITE
PANTONE COLOR NUMBER: WHITE

COMPLETE COLOR NAME: RED
PANTONE COLOR NUMBER: 185C

COMPLETE COLOR NAME: BLACK
PANTONE COLOR NUMBER: BLACK

APPROVED BY:

SIGNATURE:

PRINTED NAME:

TITLE:

DATE:

FIELD LAYOUT NOTES (sports are in order of dominance):

- FOOTBALL MARKINGS ARE 4" WHITE.
- SOCCER MARKINGS ARE 4" YELLOW NFHS STANDARDS.

FIELD DOMINANCY IS ONLY WITHIN THE FOOTBALL FIELD OF PLAY

ALL DIMENSIONS TO BE VERIFIED BEFORE ANY CONSTRUCTION BEGINS.

NFHS STANDARDS

TUALATIN HIGH SCHOOL
REPLACEMENT
TUALATIN, OR

DATE: MARCH 23, 2016

ISSUE: PRESENTATION

SHEET: X/X FIELD LAYOUT



FieldTurf
A Tarkett Sports Company

DRAWN BY:	P.B.
CHECKED BY:	J.B.
SCALE:	1"=40'
FIELD AREA:	100,328 sq.ft.
PERIMETER:	1,260 ln.ft.