



agenda

ADA Task Force – Meeting #2

Date 12/13/17

Time 6:30 PM - 8:30 PM

**Tualatin Library Community Room
18878 SW Martinazzi Ave.**

Participants

ADA Task Force

6:30 pm – 6:45 pm

Project Status Report

6:45 pm – 7:30 pm

Summary of Facility Analysis Results

- Buildings
- Parks
- Right-of-Way

7:30 pm – 8:25 pm

Transition Plan Phasing

- Priorities

8:25 pm – 8:30 pm

Next Steps

In compliance with the Americans with Disabilities Act, if you need special assistance or accommodation to participate in this meeting, contact Kelsey Lewis at 503-691-3032 or klewis@tualatin.gov. Please notify the City at least thirty-six (36) hours prior to the meeting to enable the City to make reasonable arrangements to assure accessibility to this meeting.



City of Tualatin

Americans with Disabilities Act (ADA) DRAFT ADA Barrier Analysis Summary

December 2017



This page intentionally left blank.

Table of Contents

List of Tables and Maps	iii
Tables	iii
Maps.....	iii
1.0 ADA Barriers in the Built Environment.....	1
1.1 Accessibility Standards	1
1.2 Facility Assessments	1
Facility Evaluations – Parks & Buildings	1
Facility Evaluations - Public Right-of-Way	2
2.0 Parks & Buildings Barrier Summary	3
2.1 Park Sites	3
Parks.....	3
Trails & Greenways	6
2.2 Buildings	13
Brown’s Ferry Community Center	13
City Offices	13
Community Services Admin Offices.....	13
Juanita Pohl Center	13
Lafky House.....	13
Operations Admin Office	14
Police Services.....	14
Seneca Building (south end access).....	14
Tualatin Heritage Center.....	14
Tualatin Public Library.....	14
Van Raden Community Center	15
Walnut House & Shed.....	15
2.3 Parks and Buildings Barrier Removal Summary	21
3.0 Public Right-of-Way Barrier Summary	25
3.1 Seneca On-Street Parking.....	25

3.2	Curb Ramps, Pedestrian Access Routes, and Pedestrian Activated Signals.....	25
3.3	Public Rights-of-Way Prioritization	25
3.4	Priorities for Barrier Removal	26
	Curb Ramp Barrier Descriptions	28
	Pedestrian Access Route Barrier Descriptions.....	30
	Pedestrian Signal Barrier Descriptions.....	32
	Barrier Summary Tables.....	33

List of Tables and Maps

Tables

- Table 1. ADA Accessibility Barrier Types at City Parks, Greenways, and Trails
- Table 2. ADA Accessibility Barrier Types at City Buildings
- Table 3. Total Percentage of Park, Trail, and Greenway Barriers by Category
- Table 4. Total Percentage of Building Barriers by Category
- Table 5. Curb Ramps Barrier Summary
- Table 6. Pedestrian Access Routes Barrier Summary
- Table 7. Pedestrian Signals Barrier Summary

Maps

- Evaluated Parks, Trails & Greenways
- Evaluated Buildings
- Curb Ramps - High Priority
- Curb Ramps - Medium & Low Priority, Under Further Review
- Pedestrian Access Route Priorities
- Pedestrian Signal Priorities

This page intentionally left blank

1.0 ADA Barriers in the Built Environment

The process of developing an American with Disabilities Act (ADA) Transition Plan includes the identification of access barriers within the built environment. The City of Tualatin evaluated its buildings, parks, and public right-of-way facilities in the summer and fall of 2017.

1.1 Accessibility Standards

At the time of the facilities evaluations, the ADA 2010 Standards, 2014 Oregon Structural Specialty Code (OSSC) Chapter 11 Accessibility, 2015 Architectural Barriers Act (ABA) Standards for Outdoor Developed Areas, 2011 Proposed Accessibility Guidelines for Pedestrian Facilities in the Public Right-of-Way (PROWAG), 2009 Manual on Uniform Traffic Control Devices for Streets and Highways (MUTCD), and the 1991 ADA Standards for Accessible Design (ADAAG) were used to identify barriers at City facilities. Building codes and standards are revised every few years. The barrier evaluations conducted provide an assessment of current conditions as viewed by current code and provide a baseline for future barrier removal.

1.2 Facility Assessments

The barrier assessments for park and building facilities includes interior and exterior elements of a building site and park location.

Facility Evaluations – Parks & Buildings

During the site evaluations of park and building facilities, all portions of exterior and interior features of the sites and facilities used by the public were evaluated. The assessment identified physical barriers in each facility that limit accessibility and compared each facility to the 2010 ADA, 2014 OSSC, and the 2015 ABA.

The site evaluations were accomplished using a consultant team equipped with measuring devices, city facility data, and evaluation checklists. Diagrams and maps of each site were annotated during the evaluation process and were included with the ADA Facility Assessment Report. The report is available under separate cover from the City.

The elements included in the park evaluations are as follows:

- Boating Facilities
- Built-in Elements
- Corridor/Aisles
- Curb Ramps
- Doors/Gates
- Drinking Fountains
- Elevators
- Exercise Machines/Equipment
- Game and Sports Areas
- Hazards
- Judicial Facilities
- Kitchens
- Library
- Other Features
- Outdoor Constructed Features
- Parking Areas
- Picnic Areas
- Play Equipment Areas
- Ramps
- Restrooms
- Room Elements
- Signs
- Stairways
- Trails
- View Areas
- Walks

A summary of the barriers identified within the City's buildings and parks is included in section two of this report.

Facility Evaluations - Public Right-of-Way

The evaluations of the public right-of-way facilities included curb ramps, pedestrian access routes (sidewalks), and pedestrian signals. The facilities were evaluated using the 1991 ADAAG, 2010 ADA, 2011 PROWAG, and 2009 MUTCD accessibility standards.

The site evaluations were completed using a consultant team equipped with measuring devices, city facility data, and evaluation checklists. The data collected was inventoried using point GIS data with the associated barrier information included within the data tables. A summary of the barriers identified within the public right-of-way is included in section three of this report.

2.0 Parks & Buildings Barrier Summary

The ADA evaluation included 12 buildings, 12 parks, and 17 trails and greenways. This section describes each site with a summary of barriers to accessibility.

2.1 Park Sites

The evaluation conducted in the summer of 2017 included the following locations:

- Atfalati Park
- Brown's Ferry Park
- Ibach Park
- Jurgens Park
- Lafky Park
- Little Wood Rose Nature Park
- Saarinen Wayside Park
- Stoneridge Park
- Sweek Pond
- Tualatin Commons Park
- Tualatin Commons
- Tualatin Community Park
- Byrom Elementary School Trail
- Chieftain/Dakota Greenway
- Hedges Creek Greenway
- Hedges Creek Wetland
- Hi-West Greenway
- Indian Meadows Greenway
- Nyberg Creek Greenway
- Saum Creek Greenway
- Shaniko Greenway
- Tualatin High School Trail
- Tualatin River Canoe Access
- Tualatin River Greenway | E. Brown's Ferry
- Tualatin River Greenway | Library
- Tualatin River Greenway | Pony Ridge
- Tualatin River Greenway | River Ridge
- Tualatin River Greenway | W. Brown's Ferry
- Victoria Woods Natural Area

Parks

Atfalati Park

This 13.27-acre wooded park is located on the southeast edge of Tualatin. Park amenities include two playgrounds, a basketball court, tennis courts, sports fields, picnic tables, trails, restrooms, and a lawn area.

Barriers identified include the following features: parking, curb ramps, paths of travel, ramps, stairways, hazards, doors/gates, drinking fountains, restrooms, game/sport areas, picnic areas, outdoor constructed features, view areas, play equipment areas, and other site features.

Brown's Ferry Park

This 28.33-acre park is located on the northeast edge of Tualatin, along the Tualatin River. It is a popular site for picnicking at tables and in shelters, walking on trails and paths, and wildlife viewing. Other amenities include wetlands, kayak and canoe rentals, and restrooms. Brown's Ferry Community Center is also located at this park.

Barriers identified include the following features: parking, paths of travel, curb ramps, hazards, doors/gates, drinking fountains, restrooms, picnic areas, outdoor constructed features, view areas, boating facilities, and other site features.

Ibach Park

This 19.40-acre park is in a residential neighborhood in south Tualatin and has an interactive, educational play area. Park amenities include playgrounds, basketball courts, tennis courts, sports fields, picnic tables and shelters, restrooms, a water feature, and a lawn area.

Barriers identified include the following features: parking, paths of travel, curb ramps, hazards, doors/gates, drinking fountains, restrooms, game/sport areas, picnic areas, outdoor constructed features, play equipment areas, and other site features.

Jurgens Park

This 12.15-acre park is located on the northwest edge of Tualatin, along the Tualatin River. It includes picnic tables and a covered picnic shelter, a playground and sand play area, sports fields, restrooms, and tennis courts.

Barriers identified include the following features: parking, curb ramps, paths of travel, trails, hazards, doors/gates, drinking fountains, restrooms, game/sport areas, picnic areas, outdoor constructed features, play equipment areas, boating facilities and other site features.

Lafky Park

This 2.0-acre park is in a residential neighborhood in south Tualatin. It includes amenities such as a playground, basketball courts, trails, and picnic tables.

Barriers identified include the following features: paths of travel, hazards, picnic areas, outdoor constructed features, and play equipment areas.

Little Wood Rose Nature Park

This heavily wooded 6.55-acre park is in a residential neighborhood near Lafky Park. It includes natural areas and pathways.

Barriers identified include the following features: trails.

Saarinen Wayside Park

This 0.06-acre pocket park is located near Little Wood Rose Nature Park. It has no elements to evaluate, so no barriers were identified.

Stoneridge Park

This 0.23-acre pocket park is in a residential neighborhood near Atfalati Park. Amenities include a playground, and a pathway.

Barriers identified include the following features: paths of travel, outdoor constructed features, and play equipment areas.

Sweek Pond

This 4.68-acre park is in north-central Tualatin, between a residential area and the police department. Amenities include trails, pathways, wetlands, and picnic tables. The Tualatin Heritage Center is also located at this park.

Barriers identified include the following features: paths of travel, outdoor constructed features, trails, and other site features.

Tualatin Commons Park

This 0.64-acre park is in downtown Tualatin. Amenities include benches.

Barriers identified include the following features: paths of travel and outdoor constructed features.

Tualatin Commons

This 5.17-acre plaza surrounds Tualatin Lake in downtown Tualatin. It the site for many of the City's special events. Amenities include restrooms, picnic tables, benches, a path, and a lawn area.

Barriers identified include the following features: parking, paths of travel, curb ramps, hazards, doors/gates, drinking fountains, restrooms, and outdoor constructed features.

Tualatin Community Park

This 27.11-acre park is located north of downtown between the Tualatin Country Club and the Tualatin River. It features sports fields, tennis and basketball courts, a sand play area and playground, a skate park, a dog park, picnic tables and shelters, restrooms, and trails. A boat ramp provides access to the river. This park is also the location of the Community Services Administration offices, Juanita Pohl Center, Lafky House, and Van Raden Community Center.

Barriers identified include the following features: parking, paths of travel, curb ramps, ramps, hazards, stairways, doors/gates, drinking fountains, built-in elements, restrooms, game/sport areas, exercise machines and equipment, picnic areas, outdoor constructed features, play equipment areas, trails, and other site features.

Trails & Greenways

Byrom Elementary School Trail

This 2,756-linear foot shared-use path encircles the play fields at Byrom Elementary School.

Barriers identified include the following features: trail path of travel and other site features.

Chieftain/Dakota Greenway

This 6.14-acre greenway is in south Tualatin, near Byrom Elementary School and Tualatin High School and the trail evaluated is 3,261 linear feet.

Barriers identified include the following features: trail paths of travel and other site features.

Hedges Creek Greenway

This 11.66-acre greenway is in south Tualatin. It intersects with Indian Meadows Greenway at Ibach Park and continues diagonally northwest the trail evaluated is 1,641 linear feet.

Barriers identified include the following features: trail path of travel and other site features.

Hedges Creek Wetland

This 29.06-acre site is located west of downtown, and spans through residential, commercial, and industrial sections of the city. It includes trails and wildlife viewing opportunities. The trail evaluated is 808 linear feet.

Barriers identified include the following features: paths of travel.

Hi-West Greenway

This 1.59-acre greenway is located near Lafky Park. The trail evaluated is 763 linear feet.

Barriers identified include the following features: paths of travel.

Indian Meadows Greenway

This 3.82-acre greenway is in south Tualatin and intersects with Hedges Creek Greenway at Ibach Park. The trail evaluated is 2,672 linear feet.

Barriers identified include the following features: paths of travel, outdoor constructed features, and other site features.

Nyberg Creek Greenway

This trail extends from Warm Springs to Martinazzi through a shopping center. The evaluated trail is 684 linear feet.

Barriers identified include the following features: paths of travel and curb ramps.

Saum Creek Greenway

This 54.22-acre greenway runs along the east edge of Tualatin, from I-5 through Atfalati Park, and to nearly the Tualatin River. The trail evaluated is 1,154 linear feet.

Barriers identified include the following features: stairways and trails.

Shaniko Greenway

This 3.30-acre greenway is located near Saarinen Wayside Park. The trail evaluated is 2,116 linear feet.

Barriers identified include the following features: paths of travel and trails.

Tualatin High School Trail

This trail is located on school grounds in south Tualatin. The trail and path of travel evaluated is 5,415 linear feet.

Barriers identified include the following features: paths of travel, ramps, and trails.

Tualatin River Canoe Access

Canoe access to Tualatin River is provided from Hazelbrook Rd to the river under the Pacific Highway. The trail evaluated is 324 linear feet.

Barriers identified include the following features: parking, boating facilities, and trails.

Tualatin River Greenway | E. Brown's Ferry

This portion of the Tualatin River Greenway runs through the east side of Brown's Ferry Park and is 1,535 linear feet.

Barriers identified include the following features: outdoor constructed features, trails, and other site features.

Tualatin River Greenway | Library

This portion of the Tualatin River Greenway extends from the library and follows the river until it passes under Interstate 5 and ends behind the Forest Rim Apartments due west of Brown's Ferry Park. The evaluated trail is 4,839 linear feet.

Barriers identified include the following features: paths of travel, ramps, outdoor constructed features, and other site features.

Tualatin River Greenway | Pony Ridge

This is the furthest west portion of trail of the Tualatin River Greenway and is approximately 820 linear feet.

Barriers identified include the following features: paths of travel and other site features.

Tualatin River Greenway | River Ridge

This portion of the greenway is immediately east of Pony Ridge. The evaluated trail is approximately 2,000 linear feet.

Barriers identified include the following features: paths of travel, curb ramps, and ramps.

Tualatin River Greenway | W. Brown's Ferry

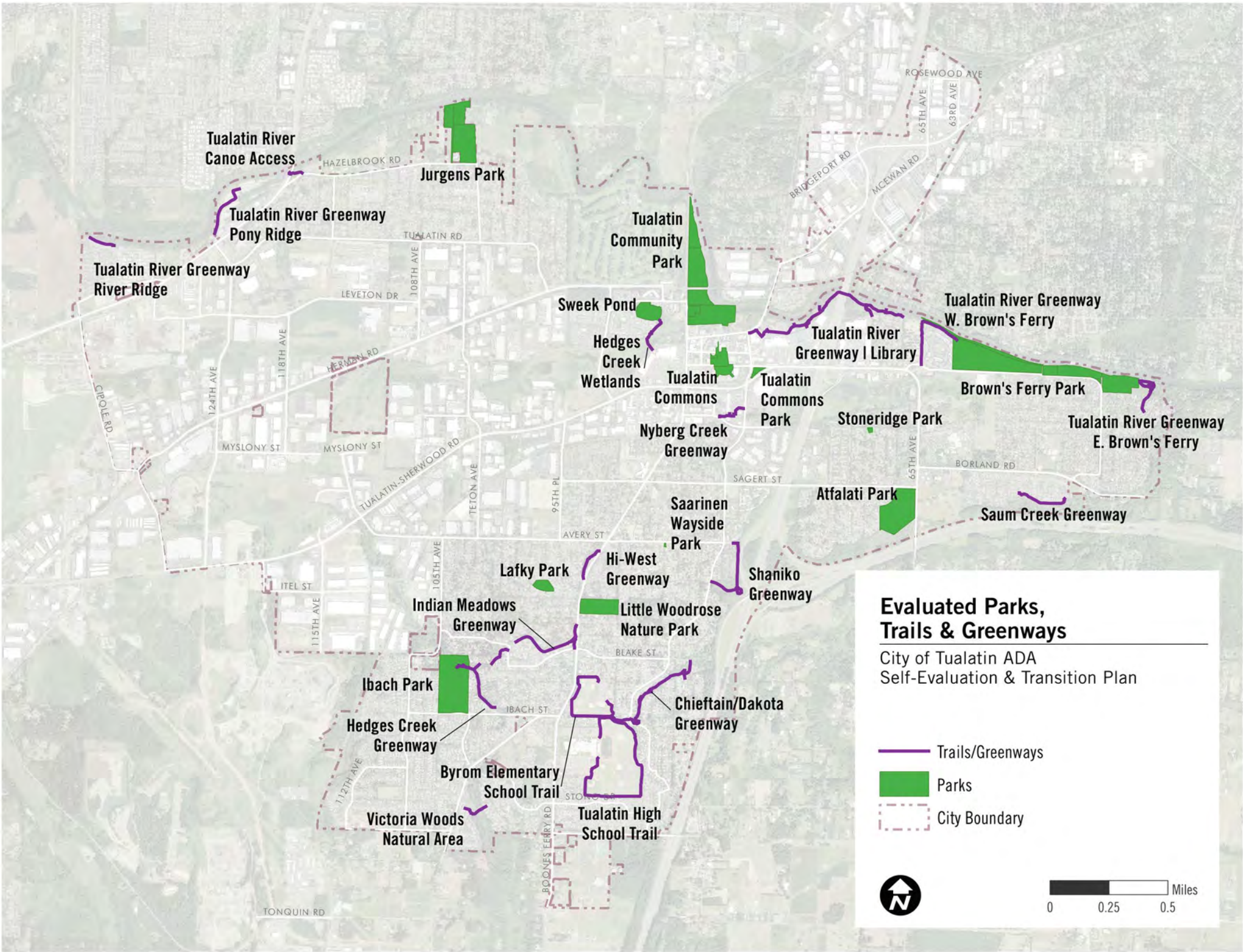
This portion of the greenway is located due west of Brown's Ferry Park. The evaluated trail is 1,855 linear feet.

Barriers identified include the following features: paths of travel and outdoor constructed features.

Victoria Woods Natural Area

This 2.22-acre natural area is in the furthest south section of the city limits. It includes trails and wildlife viewing opportunities.

Barriers identified include the following features: stairways and trails.



Tualatin River Canoe Access

Jurgens Park

Tualatin River Greenway Pony Ridge

Tualatin Community Park

Tualatin River Greenway River Ridge

Sweek Pond

Tualatin River Greenway W. Brown's Ferry

Hedges Creek Wetlands

Tualatin River Greenway I Library

Tualatin Commons

Tualatin Commons Park

Brown's Ferry Park

Tualatin River Greenway E. Brown's Ferry

Nyberg Creek Greenway

Stoneridge Park

Atfalati Park

Saum Creek Greenway

Saarinen Wayside Park

Lafky Park

Hi-West Greenway

Shaniko Greenway

Evaluated Parks, Trails & Greenways

City of Tualatin ADA Self-Evaluation & Transition Plan

Trails/Greenways

Parks

City Boundary



This page intentionally left blank.

Table 1. ADA Accessibility Barrier Types at City Parks, Greenways, and Trails

Location Name	Parking	Paths of Travel	Hazards	Doors	Drinking Fountains	Restrooms	Sports Fields & Courts	Other	Play Areas	Picnic Area	Outdoor Constructed Features	Trails
Parks												
Atfalati Park	●	●	●	●	●	●	●	●	●	●	●	
Brown's Ferry Park	●	●	●	●	●	●		●		●	●	
Ibach Park	●	●	●	●	●	●	●	●	●	●	●	
Jurgens Park	●	●	●	●	●	●	●	●	●	●	●	●
Lafky Park		●	●						●	●	●	
Little Wood Rose Nature Park												●
Saarinen Wayside Park												
Stoneridge Park		●							●		●	
Sweek Pond		●						●			●	●
Tualatin Commons Park		●									●	
Tualatin Commons	●	●	●	●	●	●					●	
Tualatin Community Park	●	●	●	●	●	●	●	●	●	●	●	●
Trails and Greenways												
Byrom Elementary School Trail								●				●
Chieftain/Dakota Greenway		●						●				●
Hedges Creek Greenway								●				●

Location Name	Parking	Paths of Travel	Hazards	Doors	Drinking Fountains	Restrooms	Sports Fields & Courts	Other	Play Areas	Picnic Area	Outdoor Constructed Features	Trails
Hedges Creek Wetland		●										
Hi-West Greenway		●										
Indian Meadows Greenway		●						●			●	●
Nyberg Creek Greenway		●										
Saum Creek Greenway		●										●
Shaniko Greenway		●										●
Tualatin High School Trail		●										●
Tualatin River Canoe Access	●	●										●
Tualatin River Greenway E. Brown's Ferry								●			●	●
Tualatin River Greenway Library		●						●			●	
Tualatin River Greenway Pony Ridge		●						●				
Tualatin River Greenway River Ridge		●										
Tualatin River Greenway W. Brown's Ferry		●									●	
Victoria Woods Natural Area		●										●

2.2 Buildings

The evaluation conducted in the summer of 2017 included the following 12 buildings:

- Brown's Ferry Community Center
- City Offices
- Community Services Admin Offices
- Juanita Pohl Center
- Lafky House
- Operations Admin Office
- Police Services
- Seneca Building (south end access)
- Tualatin Heritage Center
- Tualatin Public Library
- Van Raden Community Center
- Walnut House & Shed

Brown's Ferry Community Center

This building is located at Brown's Ferry Park at 5855 SW Nyberg Lane. It includes multiple meeting rooms, a kitchen, restrooms, and several decks.

Barriers identified include the following features: parking, paths of travel, stairways, hazards, doors/gates, corridors/aisles, rooms, kitchen, and restrooms.

City Offices

This building is located at 18880 SW Martinazzi Avenue. It houses the Library and City offices for Library, Legal, Information Services, and Community Development.

Barriers identified include the following features: parking, paths of travel, curb ramps, stairways, hazards, doors/gates, signs, drinking fountains, built-in elements, rooms, corridors/aisles, restrooms, and other site features.

Community Services Admin Offices

These offices are located at 8515 SW Tualatin Road, in Tualatin Community Park.

Barriers identified include the following features: ramps, stairways, hazards, doors/gates, signs, and restrooms.

Juanita Pohl Center

This building is in Tualatin Community Park at 8513 SW Tualatin Road. It includes spaces for meetings, events, and activities, a kitchen, and restrooms.

Barriers identified include the following features: paths of travel, stairways, hazards, doors/gates, drinking fountains, rooms, built-in elements, corridors/aisles, restrooms, and other site features.

Lafky House

This building is in Tualatin Community Park.

Barriers identified include the following features: paths of travel, doors/gates, and ramps.

Operations Admin Office

The Operations Center is located at 10699 SW Herman Road. It includes a warehouse, fleet shop, and Operations Building. The Operations Department and Information Services Department from this location.

Barriers identified include the following features: parking, doors/gates, drinking fountains, ramps, hazards, restrooms, and built-in elements.

Police Services

This building houses the Police Department and is located at 8650 SW Tualatin Road, near Sweek Pond.

Barriers identified include the following features: parking, curb ramps, paths of travel, hazards, doors/gates, signs, drinking fountains, built-in elements, rooms, restrooms, judicial facilities, and other site features.

Seneca Building (south end access)

This building is located at 18861 SW Martinazzi Avenue. It houses the Administration Department, which includes the City Manager's Office and Human Resources.

Barriers identified include the following features: stairways, hazards, doors/gates, elevators, corridors/aisles, and restrooms.

Tualatin Heritage Center

This building is located at Sweek Pond at 8700 SW Sweek Road. It is managed by the Tualatin Historical Society in partnership with the City of Tualatin, and includes a main hall, platform, office, meeting space, storage, and a restroom.

Barriers identified include the following features: parking, curb ramps, paths of travel, doors/gates, stairways, hazards, drinking fountains, corridors/aisles, restrooms, picnic areas, and other site features.

Tualatin Public Library

This building is in downtown Tualatin at 18878 SW Martinazzi Avenue. It includes a Community Room, two small meeting rooms, a teen room, three computer zones, restrooms, and spaces for sitting, reading, and other activities.

Barriers identified include the following features: hazards, doors/gates, signs, drinking fountains, built-in elements, library, restrooms, and other site features.

Van Raden Community Center

This building is in Tualatin Community Park.

Barriers identified include the following features: paths of travel, ramps, stairways, hazards, doors/gates, signs, drinking fountains, built-in elements, rooms, kitchens, restrooms, and other site features.

Walnut House & Shed

These structures are located at 11605 and 11675 SW Hazelbrook Road, respectively, at River Mile 11.5, and are leased to Tualatin Riverkeepers for recreation and environmental programs.

Barriers identified include the following features: parking, paths of travel, doors/gates, hazards, stairways, restrooms, and kitchens.

This page intentionally left blank



Walnut House & Shed

Operations Admin Office

Police Services

Tualatin Heritage Center

**Community Services
Admin Office**

Van Raden Community Center

Lafky House

Juanita Pohl Center

Tualatin Public Library

**City Offices
Seneca Building**

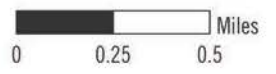
**Brown's Ferry
Community Center**

Evaluated Buildings

City of Tualatin ADA
Self-Evaluation & Transition Plan

● Buildings

▭ City Boundary



This page intentionally left blank.

Table 2. ADA Accessibility Barrier Types at City Buildings

Location Name	Parking	Paths of Travel	Hazards	Doors	Drinking Fountains	Room Elements	Restrooms	Kitchens	Other	Signs	Picnic Areas	Library Facilities	Judicial Facilities
Brown’s Ferry Community Center	●	●	●	●		●	●	●					
City Offices	●	●	●	●	●	●	●		●	●			
Community Services Admin Offices		●	●	●			●			●			
Juanita Pohl Center		●	●	●	●	●	●		●				
Lafky House		●		●									
Operations Admin Office	●	●	●	●	●	●	●						
Police Services	●	●	●	●	●	●	●		●	●			●
Seneca Building (south end access)		●	●	●			●						
Tualatin Heritage Center	●	●	●	●	●		●		●		●		
Tualatin Public Library			●	●	●	●	●		●	●		●	
Van Raden Community Center		●	●	●	●	●	●	●	●	●			
Walnut House & Shed	●	●	●	●			●	●					

This page intentionally left blank

2.3 Parks and Buildings Barrier Removal Summary

Accessibility barriers are prioritized in a process referenced in the ADA Title II Regulations. The principle is to ensure that basic access is provided, access to activities is provided, amenities are accessible, and alternatives to architectural modifications are allowed when appropriate.

Translating these categories into action plans must be accomplished using a programmatic approach. The site priorities are divided into four categories:

- **Category 1:** The highest Category is placed on those barrier removal items that provide accessibility at the main entrance of a facility or improve a path of travel to the portion of the facility where program activities take place (e.g., parking, walks, ramps, stairs, doors, etc.).
- **Category 2:** A second Category is placed on those barrier removal items that improve or enhance access to program use areas (e.g., transaction counters, conference rooms, public offices, restrooms, etc.).
- **Category 3:** A third Category is placed on those barrier removal items that improve access to amenities serving program areas (e.g., drinking fountains, telephones, site furnishings, vending machines).
- **Category 4:** A fourth Category identifies areas or features not required to be modified for accessibility (no public programs located in this area, or duplicate features).

This categorization was applied to each identified barrier at Tualatin sites and buildings. Some barriers will require further evaluation by City staff for programmatic solutions. These barriers have been assigned two category values (i.e. “2 or 4”), indicating the barrier will need to be assigned one of the values but not both. The categories by site are summarized in the tables on the pages that follow. The percentages in the tables refer to the total number of barriers at each individual site.

This page intentionally left blank

Table 3. Total Percentage of Park, Trail, and Greenway Barriers by Category

Location Name	Category					
	1	2	3	4	1 or 4	2 or 4
Parks						
Atfalati Park	8%	50%	9%	-	-	34%
Brown's Ferry Park	5%	63%	11%	-	-	21%
Ibach Park	15%	54%	9%	-	-	22%
Jurgens Park	8%	48%	13%	-	-	30%
Lafky Park	-	88%	-	-	-	12%
Little Wood Rose Nature Park	-	-	-	-	-	100%
Saarinen Wayside Park	-	-	-	-	-	-
Stoneridge Park	-	86%	-	-	-	14%
Sweek Pond	-	63%	-	-	-	38%
Tualatin Commons Park	-	62%	-	-	-	38%
Tualatin Commons	3%	76%	3%	-	-	18%
Tualatin Community Park	17%	63%	-	-	-	20%
Trails and Greenways						
Byrom Elementary School Trail	-	60%	-	-	-	40%
Chieftain/Dakota Greenway	-	100%	-	-	-	-
Hedges Creek Greenway	-	100%	-	-	-	-
Hedges Creek Wetland	-	100%	-	-	-	-
Hi-West Greenway	-	100%	-	-	-	-
Indian Meadows Greenway	-	87%	-	-	-	13%
Nyberg Creek Greenway	8%	92%	-	-	-	-
Saum Creek Greenway	-	100%	-	-	-	-
Shaniko Greenway	-	100%	-	-	-	-
Tualatin High School Trail	14%	86%	-	-	-	-
Tualatin River Canoe Access	20%	80%	-	-	-	-
Tualatin River Greenway E. Brown's Ferry	-	100%	-	-	-	-
Tualatin River Greenway Library	-	46%	-	-	-	54%
Tualatin River Greenway Pony Ridge	-	100%	-	-	-	-
Tualatin River Greenway River Ridge	11%	89%	-	-	-	-
Tualatin River Greenway W. Brown's Ferry	-	86%	-	-	-	14%
Victoria Woods Natural Area	-	-	-	-	-	100%

Table 4. Total Percentage of Building Barriers by Category

Location Name	Category					
	1	2	3	4	1 or 4	2 or 4
Brown's Ferry Community Center	5%	41%	-	-	47%	7%
City Offices	29%	70%	2%	-	-	-
Community Services Admin Offices	50%	50%	-	-		
Juanita Pohl Center	6%	91%	3%	-	-	-
Lafky House	-	-	-	-	100%	-
Operations Admin Office	16%	80%	3%	-	-	-
Police Services	31%	55%	4%	-	-	10%
Seneca Building (south end access)	34%	66%	-	-	-	-
Tualatin Heritage Center	9%	75%	4%	11%	-	2%
Tualatin Public Library	15%	82%	3%	-	-	-
Van Raden Community Center	14%	72%	2%	-	-	12%
Walnut House & Shed	-	-	-	-	52%	48%

3.0 Public Right-of-Way Barrier Summary

Right-of-way facilities were evaluated during the summer and fall of 2017 using criteria from the 2011 Proposed Accessibility Guidelines for Pedestrian Facilities in the Public Right-of-Way (PROWAG), 2009 Manual on Uniform Traffic Control Devices for Streets and Highways (MUTCD), 2010 ADA Standards, and the 1991 ADA Standards for Accessible Design (ADAAG)

3.1 Seneca On-Street Parking

The City evaluated the on-street parking adjacent to its Seneca Building location. Barrier-removal actions include re-grading the accessible parking space and access aisle, installing parking signage, and replacement of the curb ramp.

3.2 Curb Ramps, Pedestrian Access Routes, and Pedestrian Activated Signals

The evaluation of public right-of-way facilities for this planning process includes curb ramps, pedestrian access routes (sidewalks), and pedestrian signals throughout the City's public right-of-way. This section describes each of the three types of facilities evaluated and summarizes the barrier findings.

The first part of the summary for each type of facility has two parts:

- A graphic showing Geospatial Proximity Priorities by category; and
- Descriptions of the barrier categorizations.

The second part includes:

- Summary tables of the identified barriers; and
- Maps showing the locations of identified barriers.

3.3 Public Rights-of-Way Prioritization

Draft prioritization criteria for assigning the barrier removal phasing schedule has been developed. Under Title II Regulation § 35.150(d)(2) the criteria for prioritizing barriers within the public rights-of way are identified.

If a public entity has responsibility or authority over streets, roads, or walkways, its transition plan shall include a schedule for providing curb ramps or other sloped areas where pedestrian walks cross curbs, giving priority to walkways serving entities covered by the Act, including State and local government offices and facilities, transportation, places of public accommodation, and employers, followed by walkways serving other areas.

The draft prioritization criteria include the following:

- Location of citizen complaint/request (ADA Title II Program Access)
- Locations serving government offices and public facilities;
- Locations serving transportation;
- Locations serving commercial districts and employers; and
- Locations serving other areas.

3.4 Priorities for Barrier Removal

Matrices on the following pages illustrate the prioritization criteria for curb ramp, pedestrian access route (sidewalks), and pedestrian signal barrier removal projects in the City's public right-of-way. Each facility evaluated has been assigned a rank based on its barrier priority and category. The priority assigned is based on the information described in section 3.3 and the barrier category is based on the condition of the facility. The descriptions for each category are provided after each of the tables.

The highest ranked facilities are shaded in dark blue, medium ranked in medium blue, and lower ranked in light blue. The facilities with no assigned rank have no access deficiencies identified and have no assigned color. The columns in the matrix indicate the assigned priority and are in order of importance from left to right, with the left column having the highest importance. The rows indicate the category of condition assigned to each facility during the evaluation process, with the top row having the highest importance.

Curb Ramps

		ADA 35.150(d) Geospatial Proximity Priorities*				
		A	B	C	D	E
Priorities (Category)	Priority Description	Location of Citizen Complaint / Request (ADA Title II Program Access)	Location Serving Government Offices & Public Facilities	Location Serving Transportation	Location Serving Commercial Districts, Employers	Location Serving Other Areas
1	See Category 1 Description	High Priority A1	B1	C1	D1	E1
2	See Category 2 Description	A2	B2	C2	D2	E2
3	See Category 3 Description	A3	B3	C3	D3	E3
4	See Category 4 Description	A4	B4	C4	D4	E4
5	No deficiencies identified	A5	B5	C5	D5	E5

*The priorities listed under columns B, C, D, and E are specified under Title II 28 CFR Section 35.150 (d)

Curb Ramp Barrier Descriptions

Category 1:

- The curb ramp is built-up in the travel lane.
- The curb ramp is significantly damaged or deteriorated and is unsafe.
- There is a sidewalk with no curb ramp access or there is an obstruction to accessing the curb ramp.
- The curb ramp has no detectable warning.
- The curb ramp has no receiving ramp.

Category 2:

- Curb ramp has top turning space does not meet any existing standards.
- The curb ramp does not have a firm, stable and slip resistance surface and/or has openings >1/2-inch or parallel with the direction of travel.
- Width of ramp is less than 36 inches.
- Top turning space is less than 3 by 3 feet and the slope exceeds two percent.
- The curb ramp is not located within marked crossings (when present).
- A 3 by 4-foot clear space at the bottom of the ramp outside of the travel lane is not provided.

Category 3:

- Parallel curb ramp with constrained top turning space on two or more sides is less than 4 by 5 feet.
- Top turning space is less than 4 by 4 feet.
- A 4 by 4-foot clear space at the bottom of the ramp outside of the travel lane is not provided.
- Running slope of ramp exceeds 8.33 percent or 5.0 percent for a blended transition.
- Cross slope of ramp exceeds 2 percent at crossing with yield or stop control.
- Counter slope of the curb ramp is greater than five percent.
- Grade break is not perpendicular to ramp.
- The curb ramp has a lip or vertical discontinuity >1/2-inch

Category 4:

- Slope of ramp flared sides (if applicable) exceeds 10 percent when part of the circulation path.
- Diagonal curb ramp design without existing physical constraints.
- The curb ramp has a lip or vertical discontinuity <1/2-inch
- The detectable warning surface does not meet ADAAG or PROWAG standard.

Category 5:

No deficiencies identified.

Pedestrian Access Routes		ADA 35.150(d) Geospatial Proximity Priorities*				
		A	B	D	E	F
Priorities (Category)	Priority Description	Location of Citizen Complaint / Request (ADA Title II Program Access)	Location Serving Government Offices & Public Facilities	Location Serving Transportation	Location Serving Commercial Districts, Employers	Location Serving Other Areas
1	See Category 1 Description	High Priority A1	B1	C1	D1	E1
2	See Category 2 Description	A2	B2	C2	D2	E2
3	See Category 3 Description	A3	B3	C3	D3	E3
4	See Category 4 Description	A4	Medium Priority B4	C4	D4	E4
5	No deficiencies identified	A5	Low Priority	C5	D5	E5

*The priorities listed under columns B, C, D, and E are specified under Title II 28 CFR Section 35.150 (d)

Pedestrian Access Route Barrier Descriptions

Category 1:

- The sidewalk width is less than 36 inches, this includes fixed obstacles reducing the width of the pedestrian access route.

Category 2:

- The sidewalk width is less than 48 inches, this includes fixed obstacles reducing the width of the pedestrian access route.
- Running slope of sidewalk exceeds grade of road and is > 5 percent.

Category 3:

- The sidewalk has cross slopes that exceed 2 percent.
- The sidewalk cross slope at driveway entries exceeds 2 percent.

Category 4:

- The sidewalk has overhanging or protruding objects along its route.
- The sidewalk has vertical changes of level that exceed 1/4-inch or up to a 1/2-inch with a bevel.
- The sidewalk has horizontal openings greater than 1/2-inches wide and/or openings parallel to the path of travel.
- The sidewalk surface is not firm and slip resistant.

Category 5:

- No deficiencies identified.

Pedestrian Signals

		ADA 35.150(d) Geospatial Proximity Priorities*				
		A	B	C	D	E
Priorities (Category)	Priority Description	Location of Citizen Complaint / Request (ADA Title II Program Access)	Location Serving Government Offices & Public Facilities	Location Serving Transportation	Location Serving Commercial Districts, Employers	Location Serving Other Areas
1	See Category 1 Description	A1 High Priority	B1	C1	D1	E1
2	See Category 2 Description	A2	B2 Medium Priority	C2	D2	E2
3	See Category 3 Description	A3	B3	C3	D3 Low Priority	E3
4	No deficiencies identified	A4	B4	C4	D4	E4

*The priorities listed under columns B, C, D, and E are specified under Title II 28 CFR Section 35.150 (d)

Pedestrian Signal Barrier Descriptions

Category 1:

- Accessible pedestrian signal is not provided.
- Pedestrian crossing time is insufficient.

Category 2:

- Level clear space at push button not provided.
- Reach to push button from clear space is obstructed.
- Operating force of pushbutton exceeds 5 pounds of force.
- The pushbutton does not have a sign adjacent to or integral with the pushbutton.
- Pushbutton sign does not clearly indicate which crosswalks signal is actuated.
- Pushbutton pilot light (if applicable does not activate).
- A locator tone is not provided.
- A tactile arrow is not provided.
- Pushbutton locator tone activates at incorrect time.
- Pushbutton locator tone duration and intensity needs adjustment.
- Audible features of accessible pedestrian signal needs adjustment.
- Speech walk message of accessible pedestrian signal needs adjustment.
- Extended pushbutton feature needs adjustment.

Category 3:

- Pushbutton is locator more than 10 feet from curb, shoulder or pavement.
- Pushbutton is farther than 5 feet from the crosswalk line farthest from the intersection (when applicable).
- Pushbutton height is not within 42 and 48 inches above the ground.
- Pushbutton and arrow are not parallel with the direction of travel.
- Distance between 2 pushbuttons on the same corner is less than 10 feet.

Category 4:

- No deficiencies identified.

Barrier Summary Tables

The following tables summarize the barriers at each of the three types of right-of-way facilities.

Table 5. Curb Ramps Barrier Summary

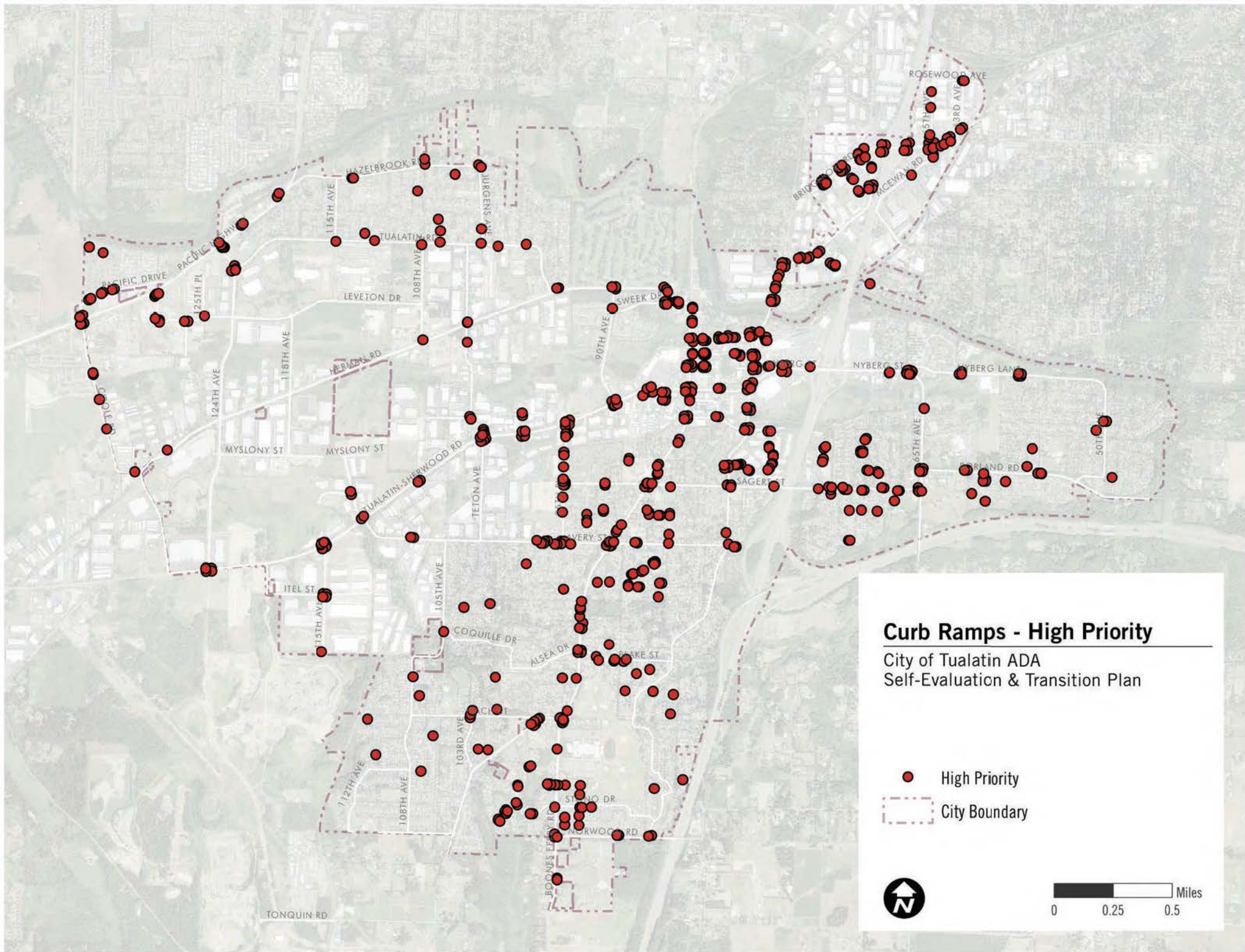
Category	Priority	Total Ramps	Percent Total	Schedule Year
High Priority				
1	B1	19	1.2%	TBD
1	C1	121	7.4%	TBD
1	D1	16	1.0%	TBD
1	E1	56	3.4%	TBD
2	B2	35	2.1%	TBD
2	C2	379	23.0%	TBD
Subtotal		626	38.0%	
Medium Priority				
2	D2	82	5.0%	TBD
2	E2	211	12.8%	TBD
3	B3	24	1.5%	TBD
3	C3	217	13.2%	TBD
3	D3	19	1.2%	TBD
Subtotal		553	33.6%	
Low Priority				
3	E3	456	27.7%	TBD
4	C4	4	0.2%	TBD
4	D4	1	0.1%	TBD
Subtotal		461	28.0%	
Under Review				
UR	B0	3	0.2%	TBD
UR	C0	2	0.1%	TBD
UR	E0	1	0.1%	TBD
Subtotal		6	0.4%	
Total for All Projects		1,646	100%	

Table 6. Pedestrian Access Routes Barrier Summary

Category	Priority	Total Barriers	Percent Total	Schedule Year
High Priority				
2	B2	4	0.3%	TBD
2	C2	47	3.3%	TBD
Subtotal		51	3.6%	
Medium Priority				
2	D2	1	0.1%	TBD
2	E2	40	2.8%	TBD
3	B3	51	3.6%	TBD
3	C3	299	21.0%	TBD
3	D3	35	2.5%	TBD
Subtotal		426	29.9%	
Low Priority				
3	E3	392	27.5%	TBD
4	B4	27	1.9%	TBD
4	C4	161	11.3%	TBD
4	D4	15	1.1%	TBD
4	E4	167	11.7%	TBD
Subtotal		762	53.5%	
No Deficiencies				
5	B5	11	0.8%	n/a
5	C5	77	5.4%	n/a
5	D5	17	1.2%	n/a
5	E5	79	5.6%	n/a
Subtotal		184	12.9%	
Total for All Projects		1,423	100%	

Table 7. Pedestrian Signals Barrier Summary

Category	Priority	Total Signals	Percent Total	Schedule Year
High Priority				
1	B1	19	12.5%	TBD
1	C1	92	60.5%	TBD
Subtotal		111	73.0%	
Medium Priority				
1	D1	31	20.4%	TBD
1	E1	10	6.6%	TBD
Subtotal		41	27.0%	
Total for All Projects		152	100%	

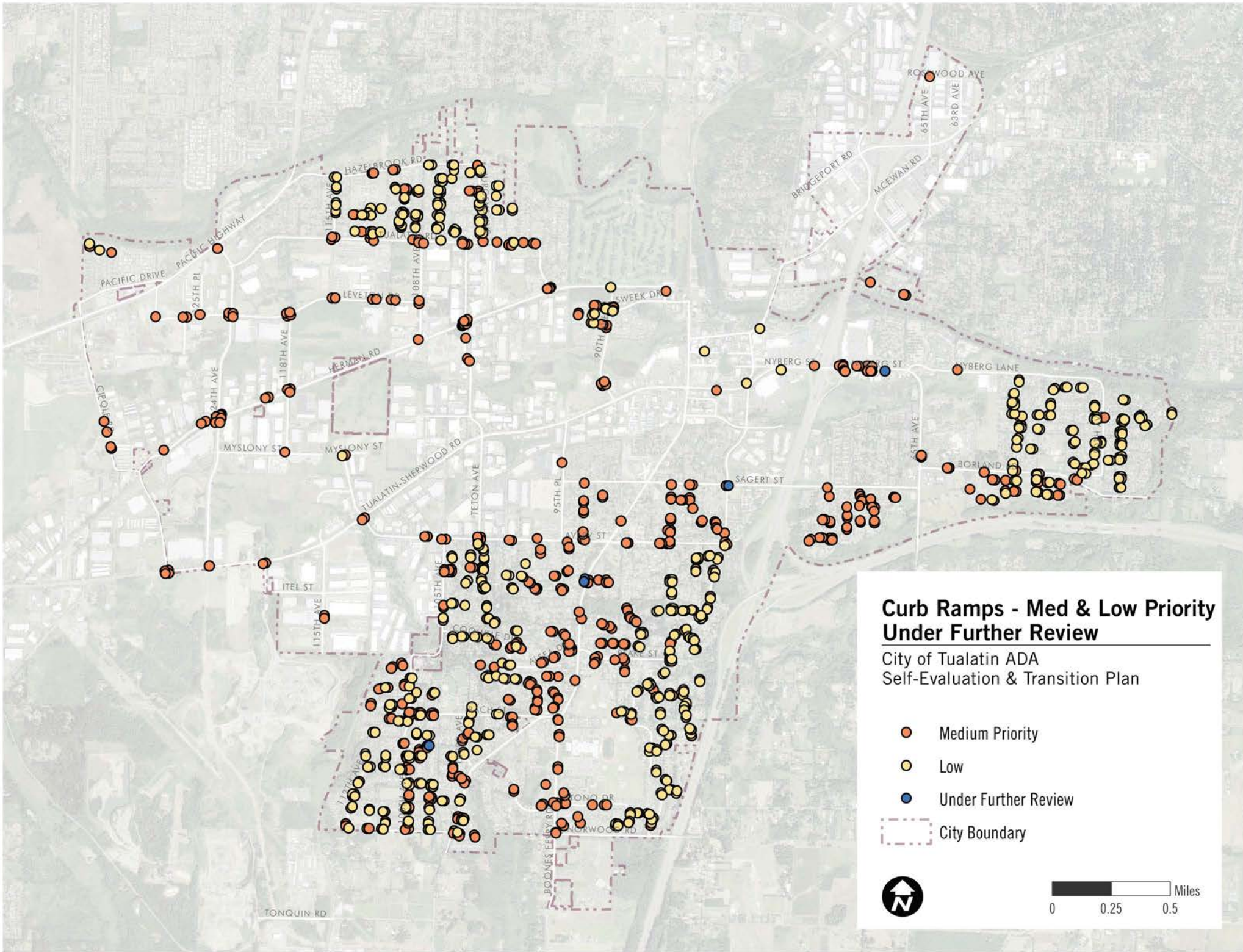


Curb Ramps - High Priority

City of Tualatin ADA
Self-Evaluation & Transition Plan

- High Priority
- City Boundary





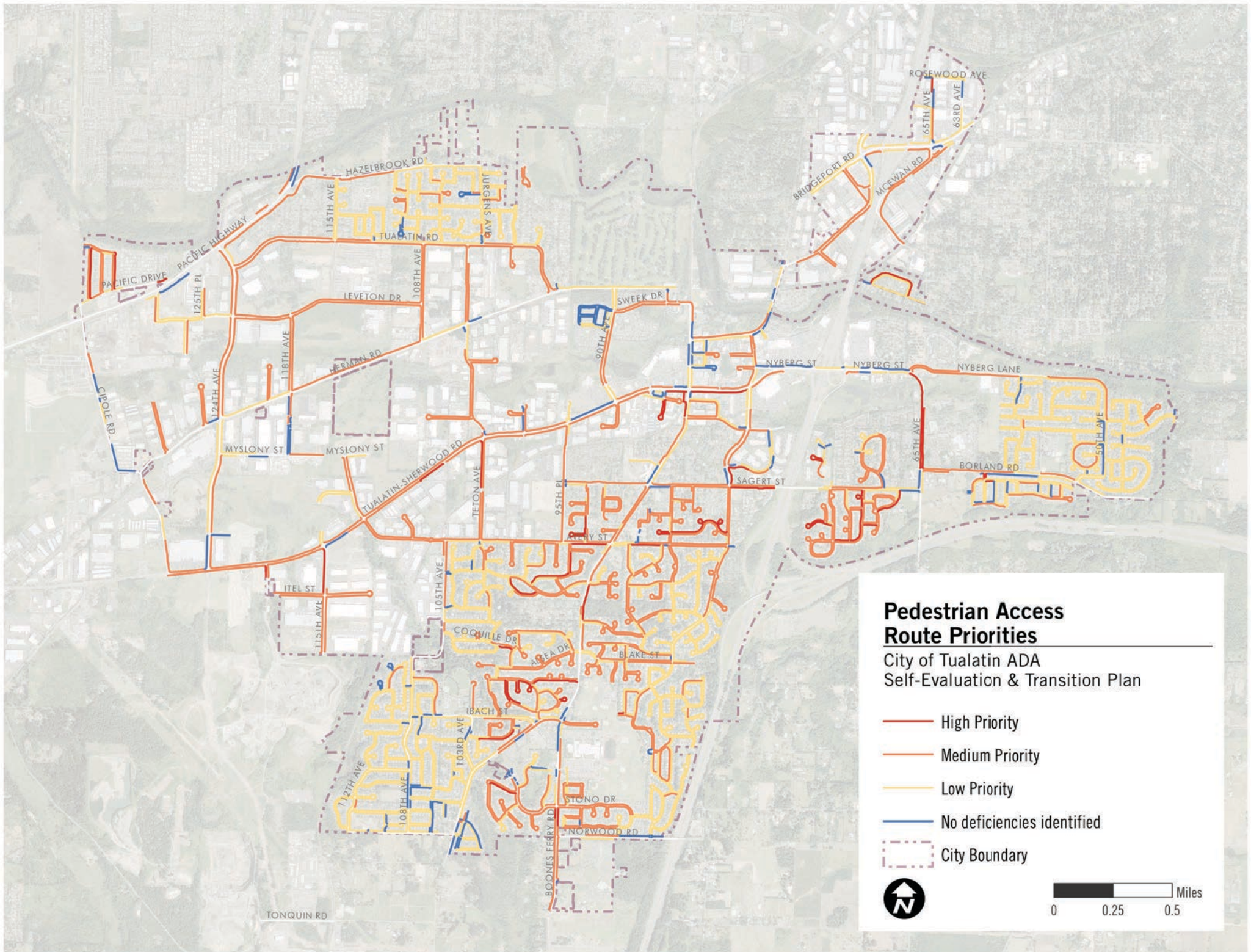
Curb Ramps - Med & Low Priority Under Further Review

City of Tualatin ADA Self-Evaluation & Transition Plan

- Medium Priority
- Low
- Under Further Review

City Boundary





Pedestrian Access Route Priorities

City of Tualatin ADA
Self-Evaluation & Transition Plan

- High Priority
- Medium Priority
- Low Priority
- No deficiencies identified
- City Boundary



