



# TUALATIN RIVER GREENWAY BICYCLE AND PEDESTRIAN SHARED USE PATH

## Grand Opening and Ribbon Cutting Ceremony

### April 9, 2016 at Barngrover Way

*Across from the Tualatin Public Library*



## Schedule of Events

**8:00 am The Times Trail Trekker 5K Run/Walk**

Meet at Barngrover Way

**9:00-11:30 am Arbor Week Tree Planting**

Meet at Nyberg Woods shopping center east of Best Buy

**12:00 pm Commemorative Heritage Tree Planting**

Meet at Barngrover Way

**1:00-1:30 pm Grand Opening and Ribbon Cutting Ceremony**

### Welcome

Dennis Wells, Tualatin Park Advisory Committee (TPARK) Chair

### Introductions, Comments, and Dedication of Yvonne

### Addington Overlook

Mayor Lou Ogden

### Comments

Matt Garrett, Director, Oregon Department of Transportation

### Drum Performance

The Confederated Tribes of the Grand Ronde

### Ribbon Cutting Ceremony

**1:30-3:30 pm Family Scavenger Hunt and Craft Activities**

Meet at Barngrover Way

**2:00- 3:00 pm A Walk Through Geologic Time Interpretive Walks**

**& 2:15- 3:00 pm** Meet at Barngrover Way

**2:30-3:30 pm Bird Walk with Naturalist**

Meet at Barngrover Way

**2:30-3:30 pm Terra Tempo Ice Age Safari and Missoula Floods**

Meet at Tualatin Public Library

*An educational journey for the whole family!*

Free commemorative bandanas for everyone attending.

For more information visit [www.tualatinoregon.gov/recreation](http://www.tualatinoregon.gov/recreation). Or call 503-691-3061

## Tualatin

**geographic name**

Tu·a·la·tin |

\ tū-'ā-lə-ten\

: city NW Oregon. A nice place to live, work, and play.

Pop 26,590

## River

**noun** | riv·er | \ 'ri-vər\

: a large natural flow of water that crosses an area of land and goes into an ocean, a lake, etc. The 80-mile-long Tualatin River meanders slowly from the Coast Range to the Willamette River.

## Greenway

**noun** | green.way |

\ 'grēn-'wā\

a corridor of undeveloped land to preserve the scenic value of the Tualatin River, enhance water and air quality, provide fish and wildlife habitat, and enable recreational and commuter use from Tualatin's western to eastern boundary.



CITY OF TUALATIN

# The Tualatin River Greenway Trail

is a ¼ mile long bicycle and pedestrian facility that promotes active, healthy living while connecting people with nature. The trail meanders through stately trees, provides beautiful views of the Tualatin River, skirts the edge of a bird-filled wetland, and crosses under Interstate 5. The trail provides a safe bike and pedestrian alternative to driving while improving connectivity between residential and commercial areas with public facilities, such as parks and the library. The trail promotes safety by enabling a safe and interesting alternative to crossing over Interstate 5 at the Nyberg Street bridge.

The trail fills a gap in a 4.7 mile segment of the Tualatin River Greenway that is located on the north and south sides of the Tualatin River while running through the cities of Tualatin, Durham, and Tigard. The trail connects four major parks and crosses the Tualatin River at the Ki-a-Kuts Bicycle and Pedestrian Bridge at the north end of Tualatin Community Park. New wayfinding signs guide people to and along the trail.

Nature conservation is an important benefit of this project. More than two acres along the south bank of the Tualatin River have had invasive non-native

plant species removed and were replanted with trees and shrubs to improve water quality, fish and wildlife habitat, soil conservation, air quality, and natural beauty.

The Tualatin City Council named a peaceful, tree-lined overlook along the trail at the edge of the Tualatin River after Yvonne Addington in honor of her contributions to the

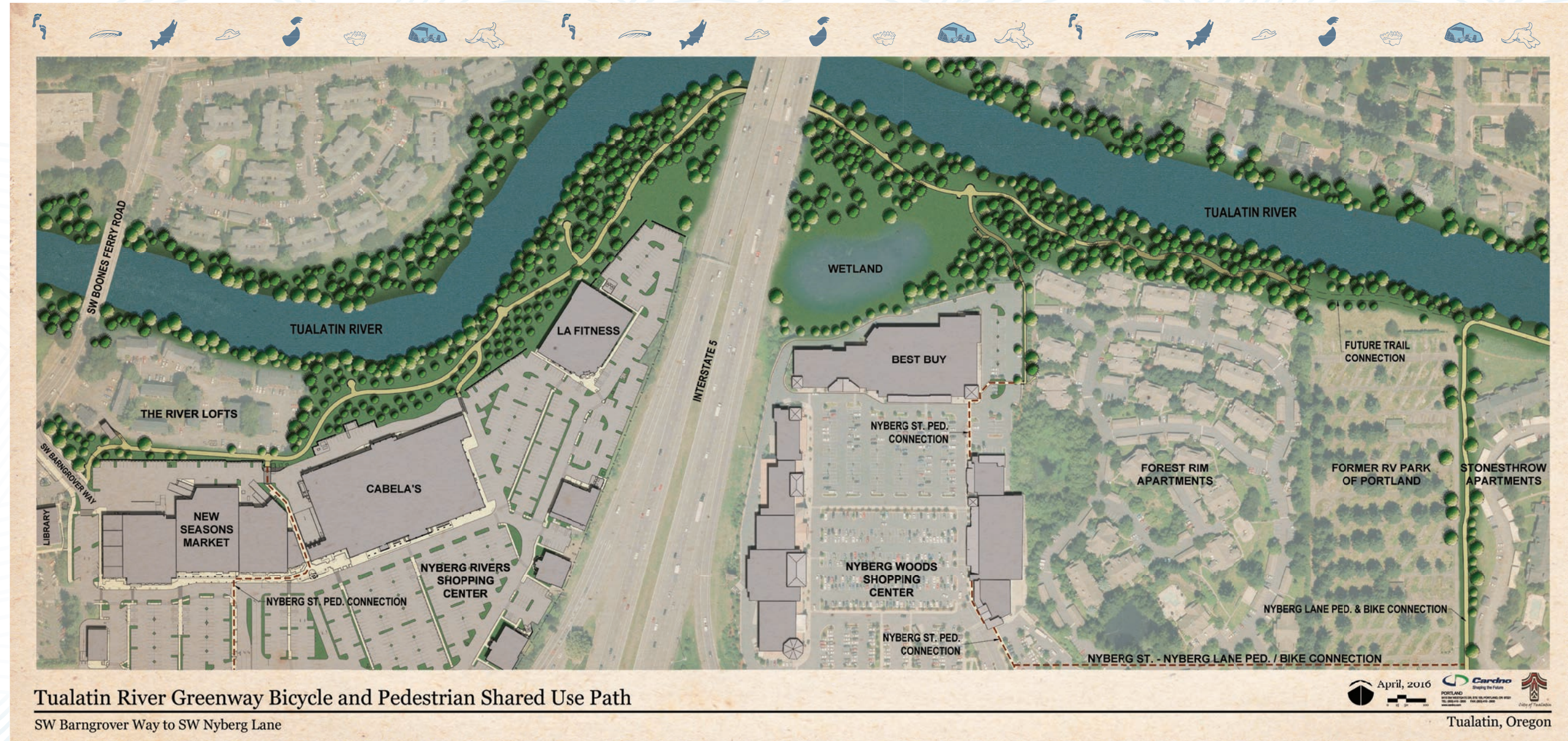
mission and purposes of parks and recreation in the City of Tualatin. Yvonne served as Tualatin's first City Administrator between 1969 and 1982 and continues to serve through her passionate and effective volunteerism with the City of Tualatin, Tualatin Historical Society, and other public and private organizations.

Educational interpretive elements along the path enable people to experience a walk through geologic time while discovering, exploring, and learning about the last Ice Age Missoula Floods, Pleistocene megafauna of the Willamette and Tualatin valleys, the emergence of Paleo-Indians, transportation improvements of early settlers, and how land uses transform over time.

## This trail project has received an Excellence in Sustainability Award for Green Infrastructure

from the American Planning Association in April 2016.

This award honors green infrastructure projects that utilize sustainable principles in planning, implementation or preservation, and operations.



Tualatin River Greenway Bicycle and Pedestrian Shared Use Path

SW Barngrover Way to SW Nyberg Lane

April, 2016  
 City of Tualatin  
 Tualatin, Oregon

### FUN FACTS ABOUT THIS TRAIL

- The new trail segment is ¼ of a mile long
- Each step between Barngrover Way and I-5 represents 25 years in geologic time
- The boardwalk decking is made out of 100% recycled plastic
- The boardwalk decking has 67,602 screws
- The trail features 5 overlooks and 9 benches
- The trail features 2+ acres of nature conservation with 3,765 trees and shrubs
- 1,700 pounds of seeded glass was used within the concrete to represent the end of the last Ice Age
- 160 foot crossing under I-5



## FUN FACTS ABOUT THIS TRAIL

- 33 years ago (1983) Parks and Recreation Master Plan started planning for this trail
- 23 years ago (1993) the City acquired the land north of Forest Rim Apartments
- 9 years ago (2007) the City acquired land rights north of Nyberg Woods shopping center
- 2 years ago (2014) the City acquired land rights north of Nyberg Rivers shopping center
- 1 year ago (2015) the City acquired land rights under I-5
- Trail opened officially for public use on February 23, 2016

## Partners and Funding

- State of Oregon, *ConnectOregon V* Program \$1,585,800
- Washington County, Major Streets Transportation Improvements Program (MSTIP) \$750,000
- CenterCal Properties, LLC \$600,000
- Metro Parks and Natural Areas \$123,860
- Washington County Visitors Association \$86,000
- Oregon Public Health Institute, HEAL Cities Program \$3,200
- Tandem Property Management LLC In-kind construction access and staging
- Tualatin Arts Advisory Committee \$5,625
- City of Tualatin, Park System Development Fees \$700,870

The total cost was approximately \$3,862,000

## Design and Construction

Concrete on grade with recycled plastic lumber boardwalks

- Design by Cardno
- Interpretive elements by Alta Planning + Design and Sea Reach LTD
- Construction by Brown Contracting Inc.



## Tualatin River Greenway Activities in the Month of April

**April 9, 10:30 am- 12:00 pm**

**Nature on the Tualatin River, Wildlife from the Paddler's Perspective** by Tualatin Riverkeepers at Tualatin Heritage Center

**April 15, 11:00 am- 12:00 pm**

**Active Adult Trail Walk** at Juanita Pohl Center

**April 16, 9:00 am**

**Tualatin River Greenway Geocaching Challenge Kick-Off**  
Tualatin Public Library

**April 17, 2:00- 3:00 pm**

**Audubon Society Raptor Walk**  
Meet at Tualatin Public Library lobby

**April 21, 7:00- 8:00 pm**

**Where Giant Mammals Roamed**  
By David Ellingson at Tualatin Heritage Center

**April 23, 1:00- 4:00 pm (drop in)**

**Casting Fossils** by Mike Full at Tualatin Public Library (in partnership with Tualatin Historical Society)

**April 23, 3:00- 4:00 pm**

**Make a Fossil Cast!** (craft activity)  
Tualatin Public Library

**April 28, 5:30 pm**

**Tualatin Discovery Run**  
Meet at Roadrunner Sports  
[discoveryrun.eventbrite.com](http://discoveryrun.eventbrite.com)

**April 30, 2:00 pm**

**Tualatin's First People** by David Lewis, Tualatin Public Library (in partnership with Tualatin Historical Society)

**Activities Throughout April on Your Own...**

**Scavenger Hunt**

Pick up brochure and claim prizes at Tualatin Public Library!

**Tualatin River Greenway Geocaching Challenge**

After completing, pick up geocoin at Tualatin Public Library. For more information and to register: [www.geocaching.com](http://www.geocaching.com).

