



City of Tualatin

Virtual Tour of Existing Conditions

Presentation to
Tualatin Transportation Task Force
December 15, 2011



What existing conditions we studied

- Land use
- Roadway system and conditions
- Traffic operations (congestion, etc.)
- Safety
- Bicycle System
- Pedestrian System
- Public Transit
- Freight rail, pipeline, waterway, airport

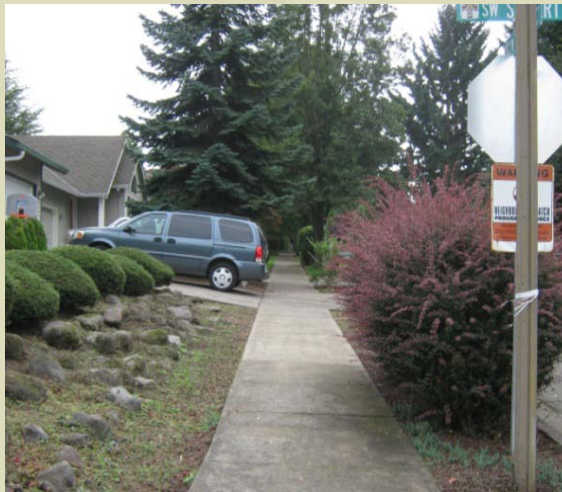
Why do we study existing conditions?

- Understand the current state of the transportation system in Tualatin
 - Opportunities
 - Deficiencies
- Baseline for analysis
- Required by state TSP guidelines

Land use

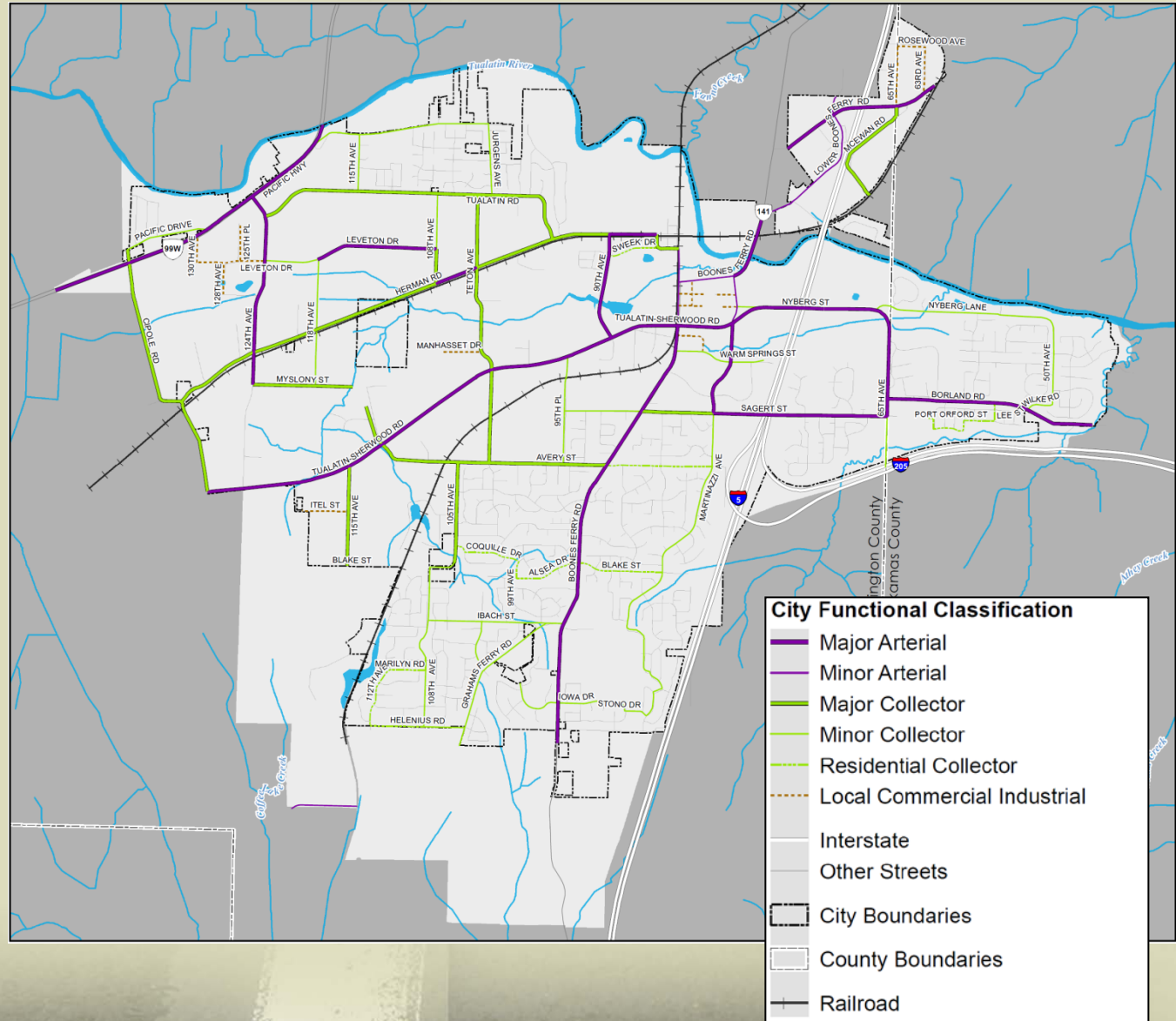
Land uses affect the transportation system

- Residential
- Employment
 - Manufacturing
 - Office
- Commercial



Roadway System and Conditions

- Roadway designations
- Compare to standards
- Intersection configuration

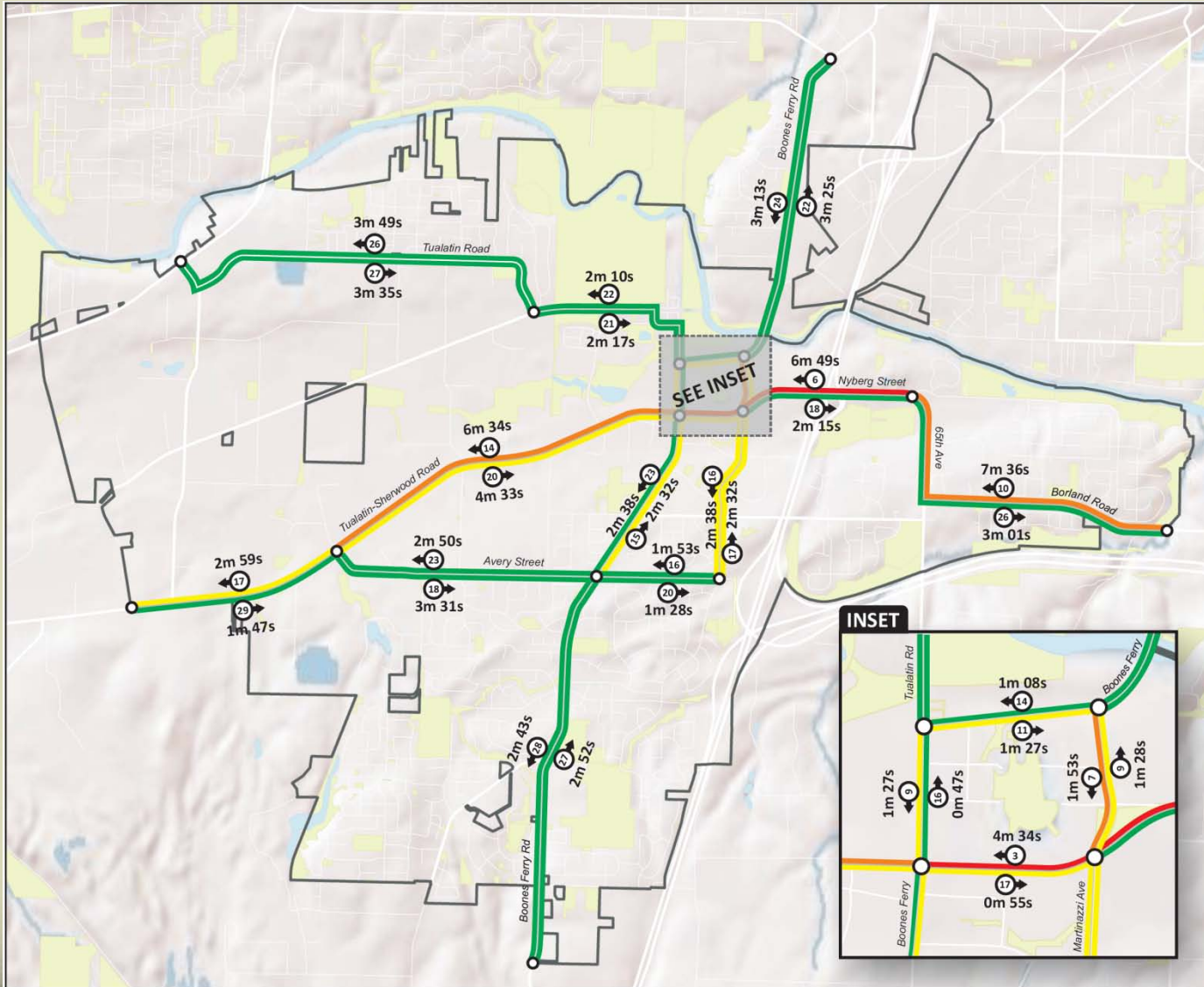


Traffic Operations

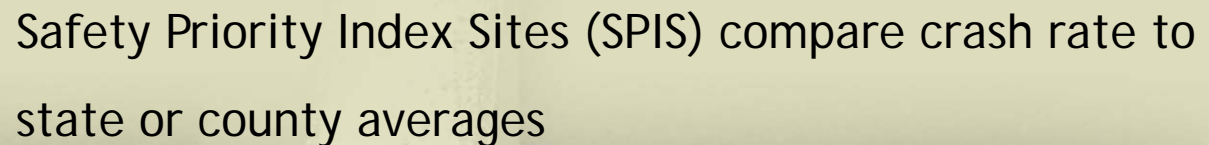
- Congested intersections and road segments
- Rush hour
- Truck percentages
- Travel speeds



Travel time in Tualatin



- Crash locations
- Areas with multiple crashes



Bicycle Facilities

- Bicycling is an alternate to the vehicle
- Accommodates those who cannot or do not want to drive



Bicycle Needs

- Difficult left turns
- Narrow bike lanes
- Areas with low bike visibility
- Obstacles in bike lanes
- Gaps in the network



Pedestrian Facilities



- Everyone is a pedestrian
- Alternative for those who cannot or do not want to drive

Pedestrian Needs

- Sidewalk gaps
- Barriers on sidewalks
- Interconnected network of multi-use paths
- Safety



Public Transit

- 6 TriMet lines
- 1 SMART line
- 4 Park and Rides
- Commuter Rail
- Ridership - average daily passengers getting on and off:

-Line 96: 1190

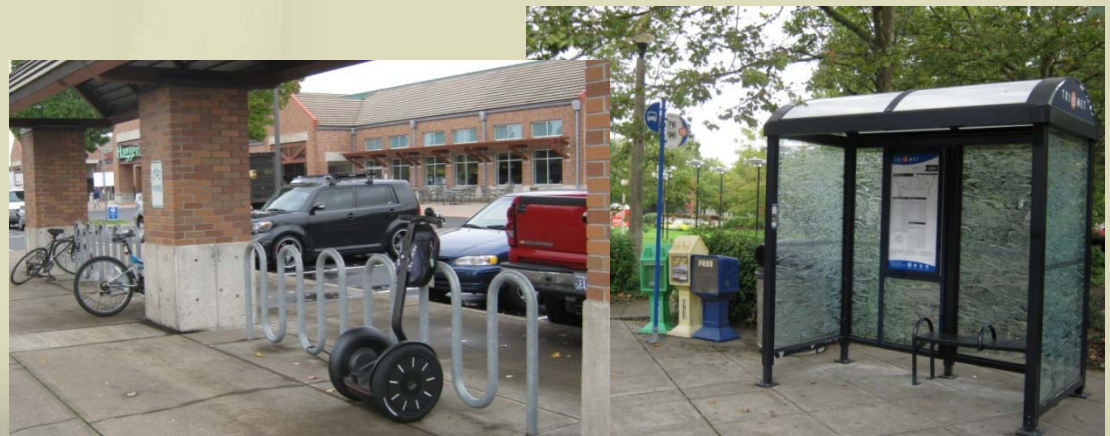
-Line 76: 1080

-WES: 440

-Line 12: 130

-Lines 37 and 38: 50

-Line 36: 40




Freight Rail and Pipeline

Could potentially impact other transportation

- 2 freight rail lines
- 1 natural gas pipeline within the city
- 1 gasoline pipeline in the SW Concept Plan area



What we heard from you



TUALATIN TSP

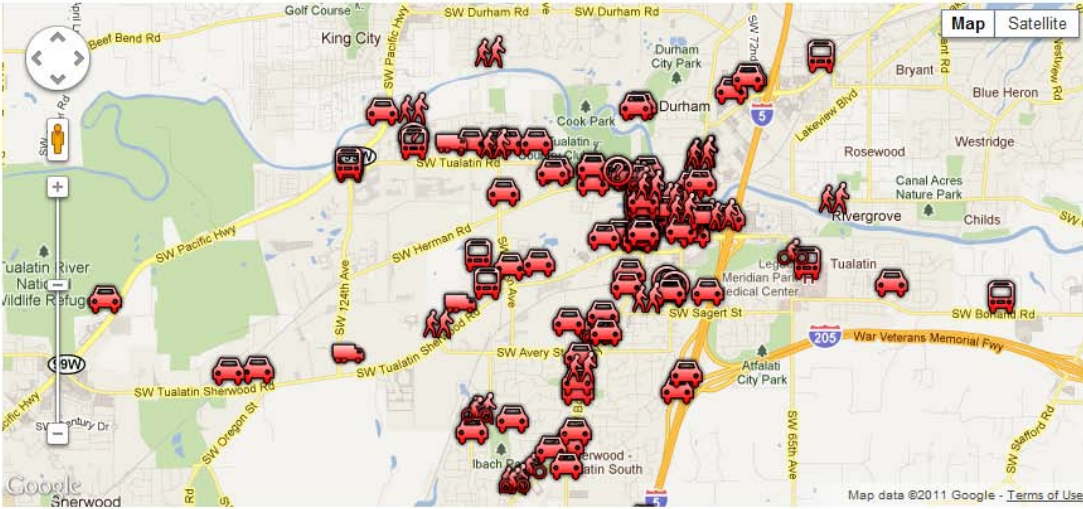
[Home](#) [About the Project](#) [Public Involvement](#) [Comments](#) [Español](#) | [Website Map](#) | Font A- A A+

Comment Map

The first step in updating the Transportation System Plan is assessing what we have. Use our interactive comment map below to share your perspective on Tualatin's transportation system. Click on the red transportation icons to see what others have said about places in Tualatin. You can agree or disagree with the comments or [submit](#) your own thoughts about a place.

Share this page: [f](#) [t](#) [g+](#) [p](#) [s](#)

[Submit a Comment](#) [Browse Comment List](#)



Map data ©2011 Google - [Terms of Use](#)

Map Layers

Filter by transportation type...

Comment Map