



## MEMORANDUM CITY OF TUALATIN

**TO:** Honorable Mayor and Members of the City Council

**FROM:** Sherilyn Lombos, City Manager

**DATE:** November 10, 2014

**SUBJECT:** Work Session for November 10, 2014

---

**5:30 p.m. (40 min) – Metro Update with Councilor Craig Dirksen.** Metro Councilor Craig Dirksen will be present to update the City Council on projects and initiatives that Metro is working on.

**6:10 p.m. (40 min) – Southwest Corridor Update.** An update on the progress of the Southwest Corridor will be given.

**6:50 p.m. (10 min) – Council Meeting Agenda Review, Communications & Roundtable.** Council will review the agenda for the November 10<sup>th</sup> City Council meeting and brief the Council on issues of mutual interest.



# STAFF REPORT

## CITY OF TUALATIN

**City Council Work Session**

**Meeting Date:** 11/10/2014

**Subject:** Metro Update

**Through:** Sherilyn Lombos, Administration

---

---

PowerPoint

---

---

MAKING A  
GREAT  
PLACE



# Metro update

TualatinCity Council

Councilor Craig Dirksen

November 10<sup>th</sup>, 2014

# Climate Smart Communities

- State requires region to reduce carbon emissions from cars and small trucks by 20% by 2035
- Evaluation of different approaches will help inform regional conversations this fall and winter



# Climate Smart Communities



- End-of-year deadline to meet the state's mandate for a strategy
- Local plans do the job: Implementing your adopted plans will drop tailpipe emissions by more than 20%

---

# Let's talk about land use



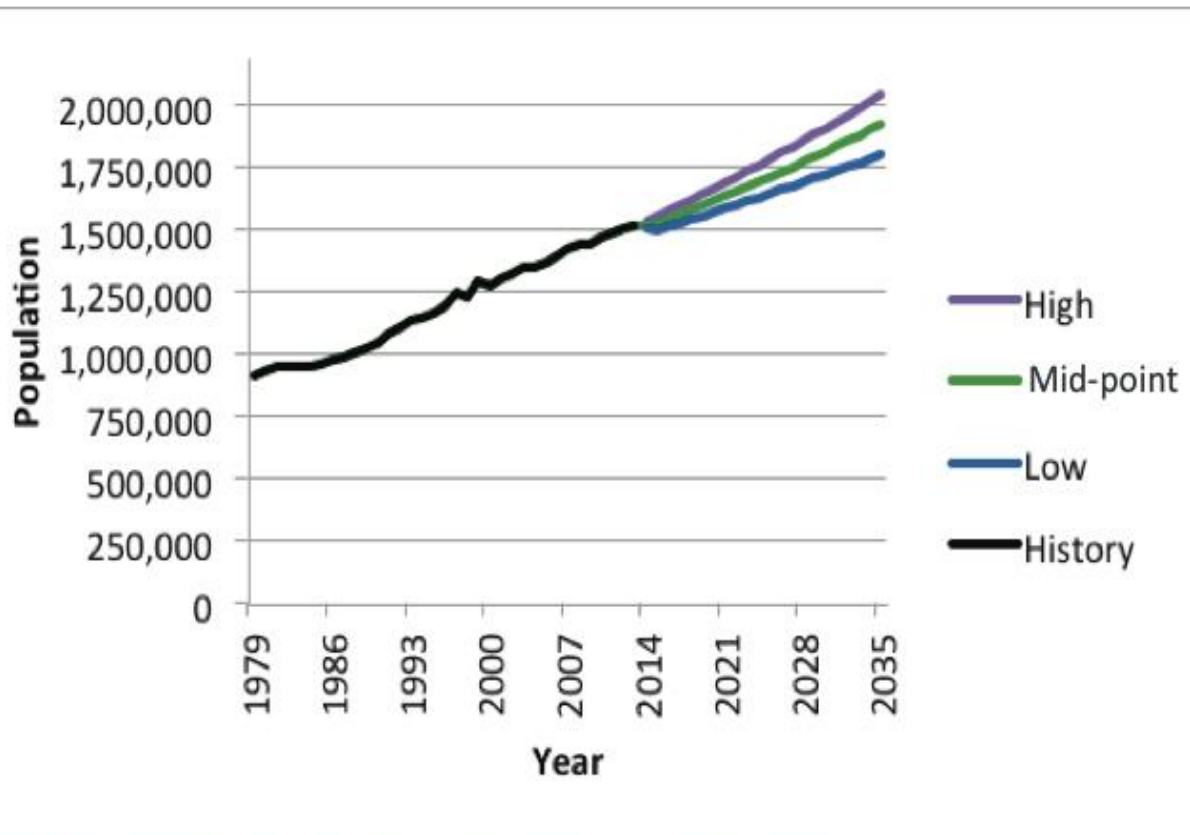
- Do we have enough developable land in our region to accommodate 20 years worth of growth?

# A balanced approach to the UGB



- We have to comply with state law.
- Protect as much farm and forestland as we can
- A variety of housing choices
- Enough land to accommodate 20 years worth of growth

# Population and employment forecasts



- Low-end estimate: 300,000 new residents by 2035
- High-end estimate: 485,000 new residents by 2035
- The lower number if the economy grows slowly, the higher number if it grows quickly

Figure 4 Population history and forecast for Metro UGB 1979 - 2035

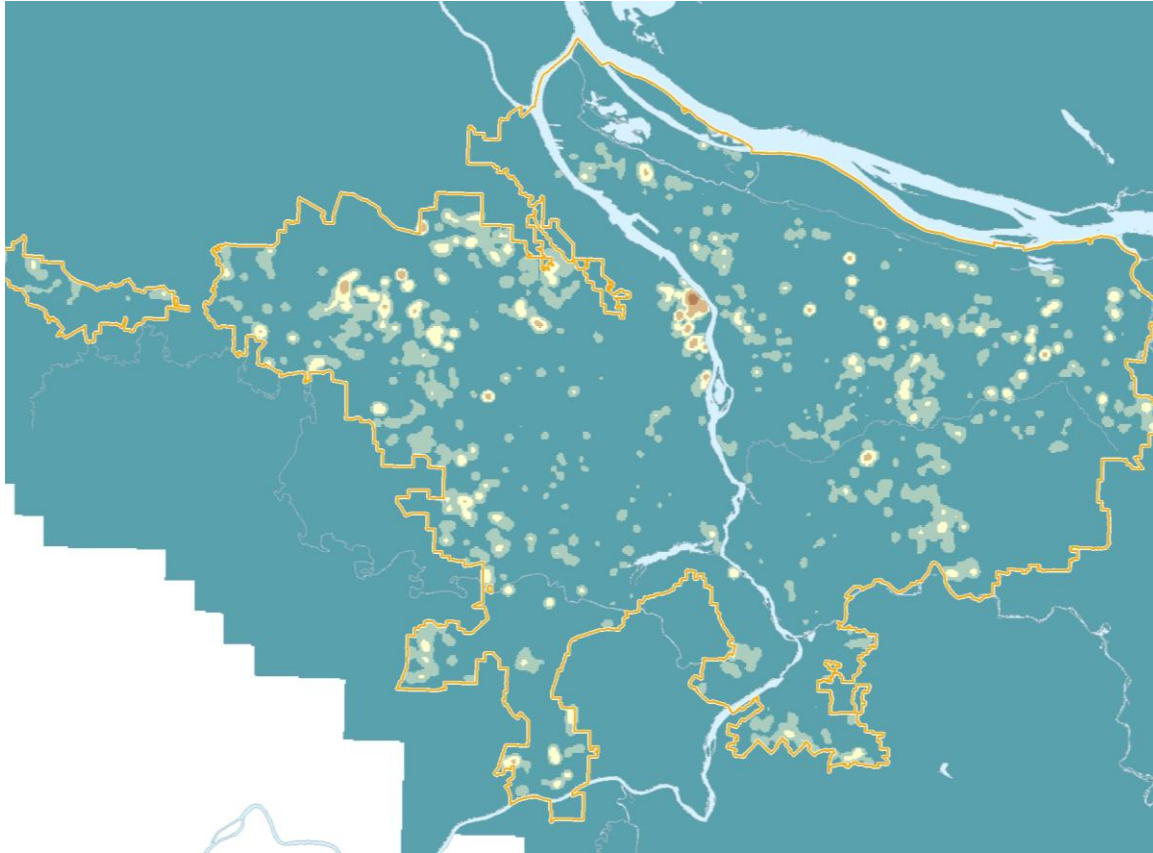


# Growth forecast decision



- By the end of this year, the Metro Council will decide what kind of growth the region can expect in the coming decades.
- It's not just about data – it's about priorities, costs and return on public investments.

# The past as a guide



- From 1998-2012, 94 percent of new homes were built within the original 1979 UGB.
- Only 6,500 new homes were built on areas we added to the UGB.

# Local planning has helped



- Cities have focused energy on a variety of homes built in areas that support livability and local economies.
- Metro's Planning and Development grants help support planning in areas inside and outside the UGB

# We might need to expand



- If we need to add land, we'll go first onto urban reserves.
- Focus on areas that make sense – places that have plans to manage growth and resources to pay for it.

# A decision by late 2015



- UGB decision must be wrapped up by the end of 2015.
- The decision will be reviewed by the Oregon Land Conservation and Development Commission.
- Questions?

# Southwest Corridor



- More refinement underway before formal environmental review begins
- Hope by November, Steering Committee will have enough info to decide on moving to DEIS

---

# Oxbow and Glendoveer



- Haunted Forest at Glendoveer
- Free children's golf & tennis clinics

---

# Scouters Mountain



- Scouters Mountain Nature Park opened on Aug. 28
- 100 acres of forests, trails and great view of Mt. Hood
- Nature walk at 10a.m. on Nov. 15



---

# Nature in Neighborhoods



- \$99,450 toward restoring a wetland and oak habitat near Cook Park
- \$25,000 to restore riparian habitat and forest along the Tualatin River

---

# Solid waste roadmap

Long-term look at region's solid waste system

## Let's Talk Trash Film Contest

- Engaging filmmakers in creating short features
- Gala event with NW Film Center, November 10

More events to come

[oregonmetro.gov/letstalktrash](http://oregonmetro.gov/letstalktrash)



---

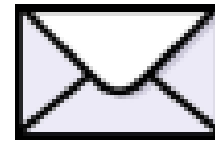
# Your questions...

Craig Dirksen

Metro Councilor, District 3

503-797-1549

[craig.dirksen@oregonmetro.gov](mailto:craig.dirksen@oregonmetro.gov)



[www.oregonmetro.gov/connect](http://www.oregonmetro.gov/connect)



# MEMORANDUM

## CITY OF TUALATIN

**TO:** Honorable Mayor and Members of the City Council

**THROUGH:** Alice Cannon, Assistant City Manager

**FROM:** Zoe Monahan, Management Analyst

**DATE:** 11/10/2014

**SUBJECT:** SW Corridor Update

---

**ISSUE BEFORE THE COUNCIL:**

Receive an update on the Southwest Corridor Project.

**EXECUTIVE SUMMARY:**

The Southwest Corridor project has continued to move forward since the last Steering Committee meeting in June 2014. At the direction of the Steering Committee, the project team has been studying multiple areas to provide additional information for future decision making. This information will be summarized at the work session.

---

**Attachments:** [SWCP Update 11.10.14](#)

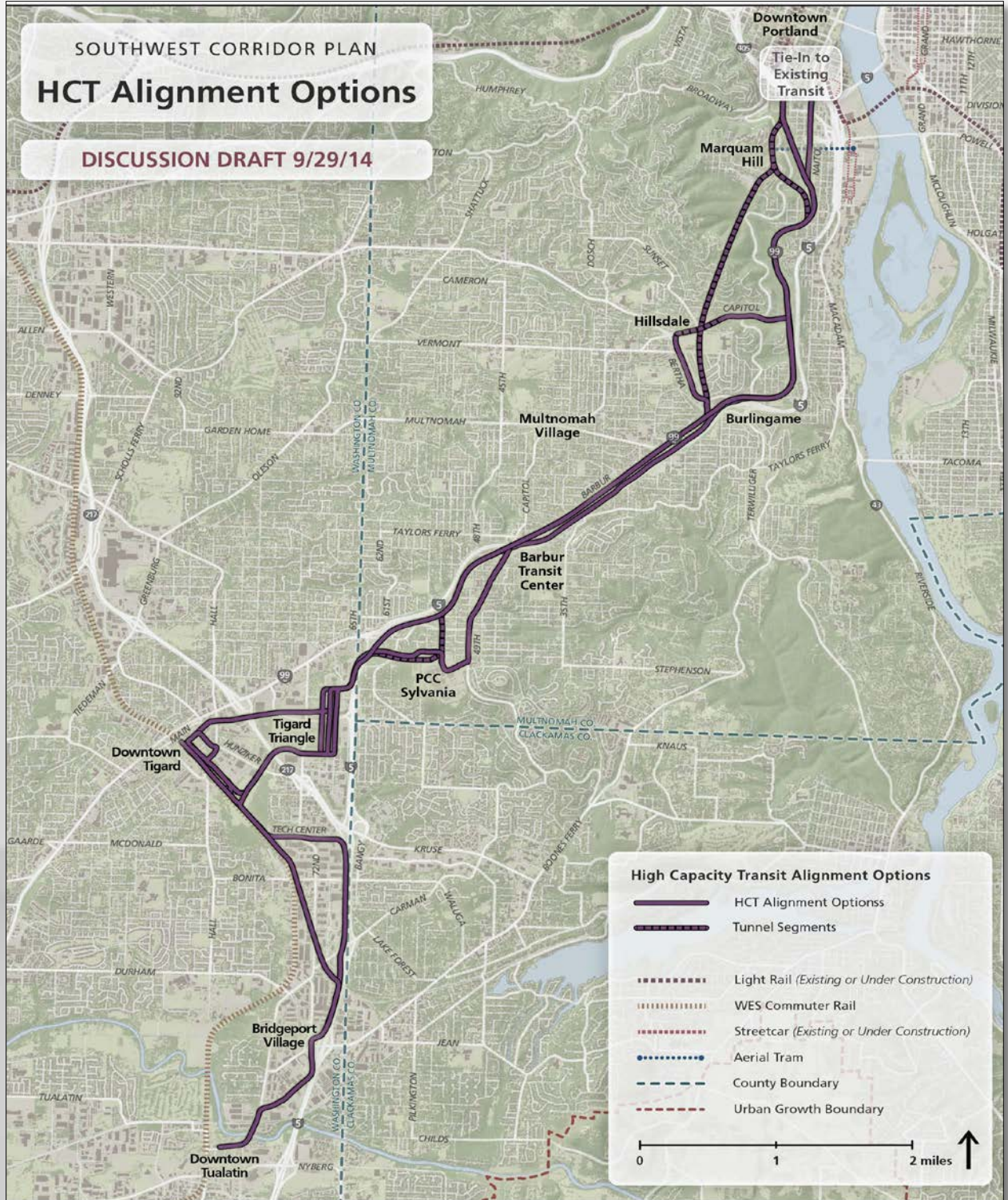


# Southwest Corridor Update

Tualatin City Council  
Work Session  
November 10, 2014



# Southwest Corridor



# Activity Since June 2014

---

In June, 2014 the Steering Committee requested additional study of these areas:

- Tie –in to Downtown Portland Transit Mall
  - Branch Service to Tigard and Tualatin
  - Pedestrian and Bicycle connection between Barbur/ Naito and Marquam Hill
  - Medium tunnel serving Marquam Hill and Hillsdale
  - Direct Service to the Hillsdale Neighborhood
  - Barbur Boulevard vs. Adjacent to I-5
  - Service to PCC Sylvania
  - Multimodal Projects
- 
- Conducted Stakeholder interviews

---

# Next Steps