



MEMORANDUM CITY OF TUALATIN

TO: Honorable Mayor and Members of the City Council

FROM: Sherilyn Lombos, City Manager

DATE: October 27, 2014

SUBJECT: Work Session for October 27, 2014

6:00 p.m. (30 min) – Pavement Maintenance Program Update. During the fiscal year 2014/2015 budget process, staff highlighted the low reserve balance in the Road Utility Fund, and mentioned that we would be analyzing future revenues and expenditures of the pavement maintenance portion of the fund. With the Washington County Vehicle Registration Fee (VRF) being on the November ballot, with a share being allocated to cities, staff wanted to update the City Council on the Pavement Maintenance Program, some historical revenue and expenditure data, future projections of revenues and expenditures and how the County VRF, if passed by the voters, would impact the City's road utility fee. Attached are two presentations for tonight's item: one regarding the Tualatin pavement maintenance program, the other regarding Washington County's VRF.

6:30 p.m. (20 min) – Public Opinion Survey on Marijuana. At the August 25th Council work session, Council discussed getting a sense of the community's appetite for banning, regulating or doing nothing about both medical as well as recreational marijuana dispensaries. Council also gave direction to approach this in a four-step process: 1) conduct a statistically valid survey immediately, 2) analyze the November 4th election, 3) have the CIO's provide input, and 4) create regulations that could be adopted prior to expiration of the current ban. Tonight's item is to report back on the results of the statistically valid survey recently conducted by Riley Research.

6:50 p.m. (10 min) – Council Meeting Agenda Review, Communications & Roundtable. Council will review the agenda for the October 27th City Council meeting and brief the Council on issues of mutual interest.



MEMORANDUM

CITY OF TUALATIN

TO: Honorable Mayor and Members of the City Council

THROUGH: Sherilyn Lombos, City Manager

FROM: Don Hudson, Finance Director
Jerry Postema, Public Works Director

DATE: 10/27/2014

SUBJECT: Pavement Maintenance Program Update

EXECUTIVE SUMMARY:

During the fiscal year 2014/2015 Budget process, staff highlighted the low reserve balance in the Road Utility Fund, and mentioned that we would be analyzing the revenues and expenditures of the pavement maintenance portion of the fund for the upcoming fiscal years. With the Washington County Vehicle Registration Fee (VRF) being on the November ballot, with a share being allocated to cities, staff wanted to update the City Council about the City of Tualatin Pavement Maintenance Program, some historical revenue and expenditure data, future projections of revenues and expenditures and how the County VRF, if passed by the voters, would impact the City's road utility fee.

Attachments: [PowerPoint- Tualatin](#)
[PowerPoint- Washington County](#)

Pavement Maintenance Program Update

October 27, 2014



Pavement Maintenance

- Tualatin City Council Adopted a Pavement Management Plan in 1988
 - To insure that our road system was kept in very good condition
- Computerized Inventory of City Streets
 - Record of street condition
 - Develops 20-year maintenance strategy

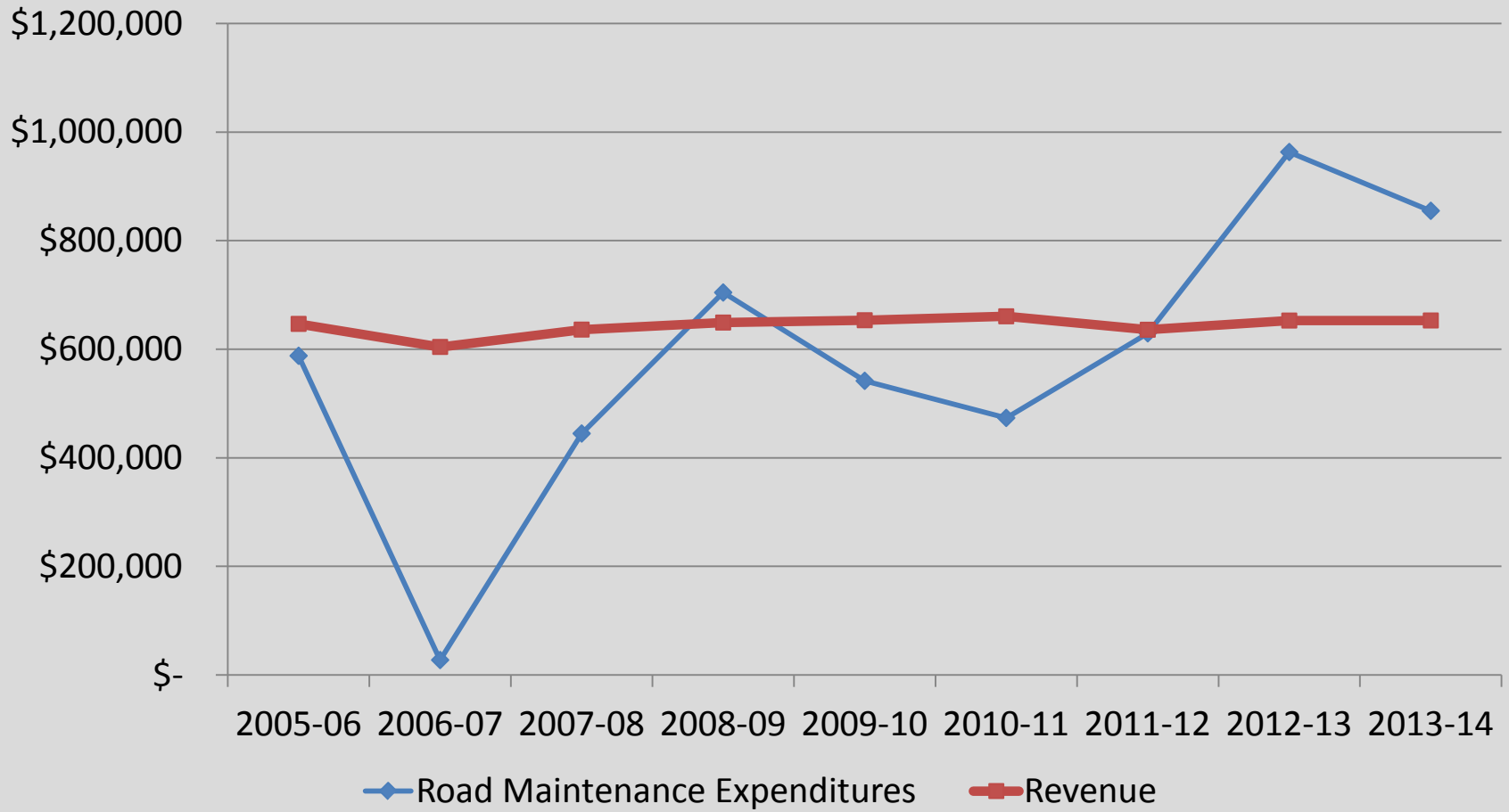
Pavement Maintenance

- Roads Evaluated Based on a Common Government Scoring System - Pavement Condition Index, or PCI
 - Scale of zero (awful) to 100 (perfect)
- The PCI is the Average Score of all the Improved Roads in a Government Agency
- Tualatin's Total System Rating is in the Very Good to Excellent Category

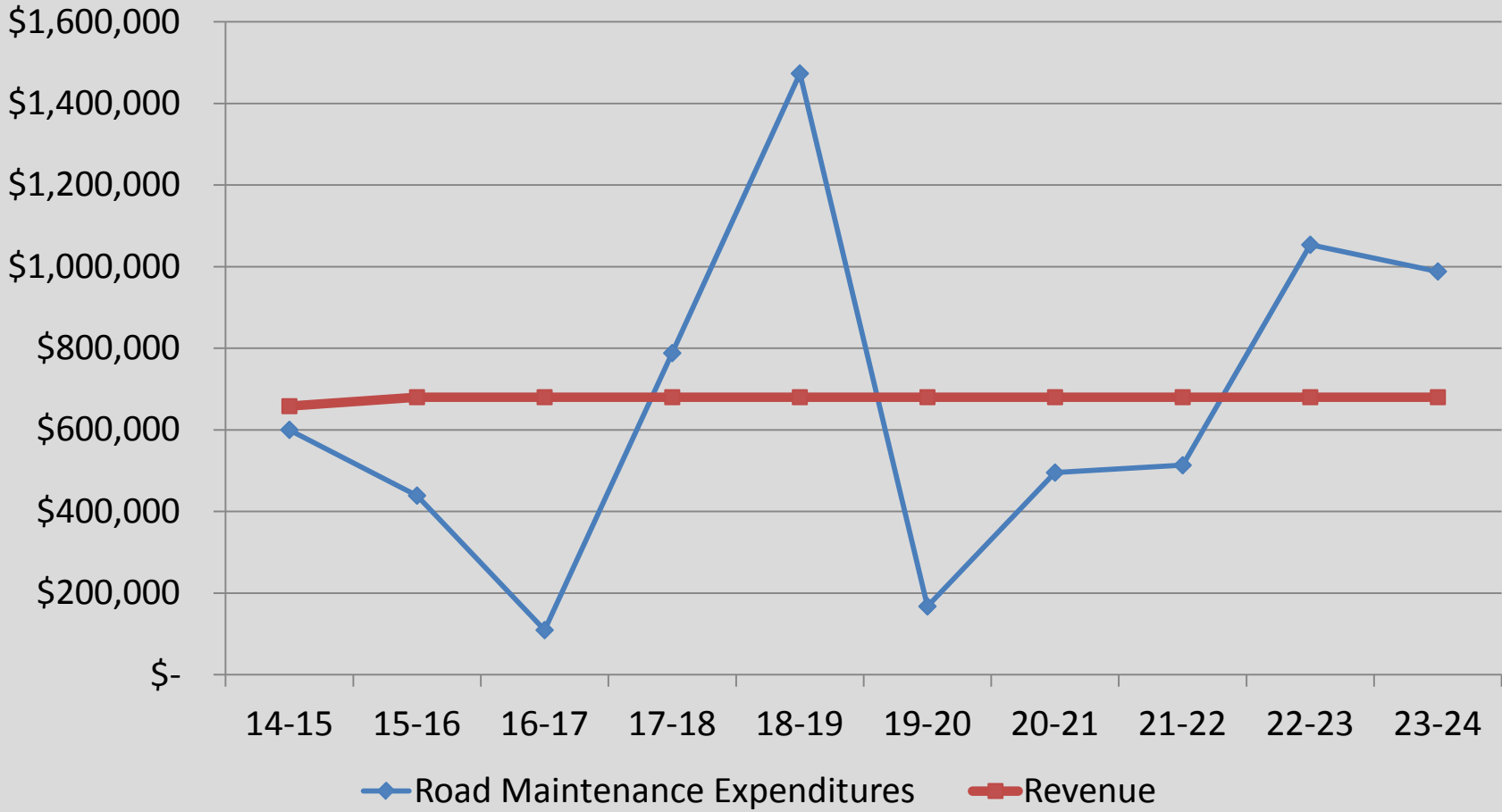
Pavement Maintenance

- PCI Rating System Allows the City to Focus on Protecting the Tax Payers Investment by:
 - Identifying immediate maintenance and rehabilitation needs
 - Monitoring pavement condition over time
 - Developing a preventative maintenance strategy
 - Developing road maintenance budgets
 - Evaluating pavement materials and designs

Road Maintenance Cost History



Road Maintenance Projection



Current Fees

Category	Pavement Maintenance	
Single Family Residential	\$ 1.42	per unit
Multifamily Residential	\$ 0.86	per unit
Non-Residential Group 1	\$ 0.75	per 1,000 sq. ft.
Non-Residential Group 2	\$ 1.66	per 1,000 sq. ft.
Non-Residential Group 3	\$ 4.39	per 1,000 sq. ft.
Non-Residential Group 4	\$ 11.08	per 1,000 sq. ft.
Non-Residential Group 5	\$ 29.51	per 1,000 sq. ft.
Non-Residential Group 6	\$ 72.73	per 1,000 sq. ft.
Non-Residential Group 7	\$ 0.53	per 1,000 sq. ft.

Next Steps

- Analyze revenue needed for future maintenance needs
- Return to Council during FY 15/16 Budget process with recommendation

Washington County Vehicle Registration Fee



ROAD WISE

Maintain Today. Save Tomorrow.

MEASURE 34-221

Our Challenge

Maintaining roads is becoming more difficult

- Current funding is not keeping pace with our needs
- Gas tax revenues are projected to decline
- Costs keep climbing
- Bigger and older system
- Growing maintenance backlog

A Local Solution — Vehicle Registration Fee

Washington County residents will decide this fall on Measure 34-221, a local VRF, as a solution to funding road maintenance.

Proposed Fee

- \$30 per year for most passenger cars and trucks owned by residents and businesses (\$2.50 a month)
- \$17 per year for motorcycles and mopeds

Use of Funds

The VRF would generate about \$12.8 million annually to be split between the county (60%) and the cities (40%)

- State law requires funds to be used exclusively for roads

Why Roads? Why Now?

- Roads are a lifeline, community connector and economic driver
- Support our local economy
- Protect our quality of life
- Critical for emergency response when seconds count

Why a VRF?

- User-based
- Complements existing sources
- Stable over time
- Practical and cost-effective to administer
- It's a local solution – funds stay in Washington County



Every dollar spent on road maintenance now saves \$5 to \$10 in repair costs later.

WWW.CO.WASHINGTON.OR.US/VRF

This information was reviewed by the Oregon Secretary of State's Office.



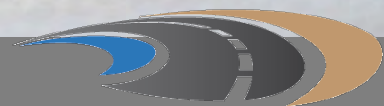
ROAD WISE

Maintain Today. Save Tomorrow.



MEASURE 34-221

WWW.CO.WASHINGTON.OR.US/VRF



ROAD WISE

Our Challenge



Washington County has a track record of success, but:

- Maintaining our roads is becoming more difficult
- Current funding is not keeping pace with maintenance needs
- Costs are rising
- Bigger and older system
- Growing maintenance backlog

Keeping Costs Down



Time to control costs:

- Delaying maintenance now will cost more later
- Reconstruction can cost up to **10 times more**
- It's critical to avoid the "tipping point"

Our Options



How do we get there?

- Cost-cutting measures alone won't close the gap
- Current funding options are limited:
 - Gas tax revenues are projected to decline
 - Other funds can't be used

A Local Solution



Vehicle Registration Fee (VRF):

- User-based
- Complements existing sources
- Stable over time
- Practical and cost-effective to administer
- Funds stay in Washington County

VRF Overview

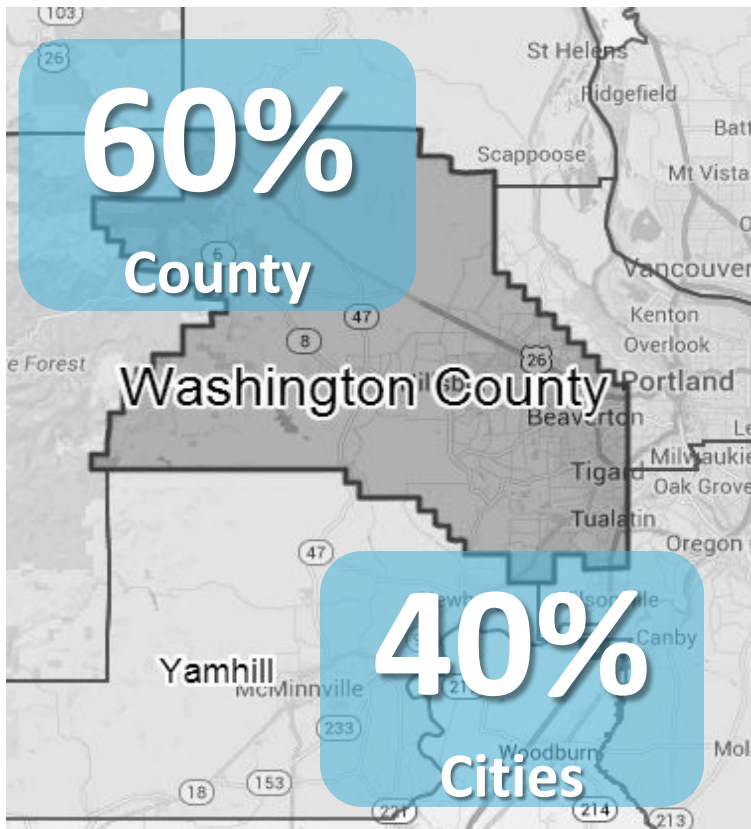


It breaks down to
\$2.50 per month

Proposed fee:

- \$30 per year for most passenger cars and trucks owned by residents and businesses
- \$17 per year for motorcycles and mopeds
- Collected with state registration fee
- If approved, the VRF would take effect January 1, 2016

Use of VRF Funds



State law requires funds to be used exclusively for roads

- Projected revenue is about \$12.8 million annually
- Funds split 60% to county and 40% to cities (based on population)

This locally generated funding would only be used for roads in Washington County.

Why Now?



Getting ahead of the problem...

- Putting off road maintenance is like not changing the oil in your car until it breaks down... it will only cost more to make repairs
- Road conditions will get worse until major repairs become necessary
- \$1 spent on road maintenance now saves \$5 to \$10 in repair or reconstruction costs later

Questions?



Go online:

www.co.washington.or.us/VRF

Contact:

Stephen Roberts

Communications Coordinator

stephen_roberts@co.washington.or.us



ROAD WISE



STAFF REPORT

CITY OF TUALATIN

City Council Work Session

Meeting Date: 10/27/2014

Subject: Public Opinion Survey on Marijuana

Through: Sherilyn Lombos, Administration

Survey Results



MARIJUANA DISPENSARY POLL

SUMMARY REPORT

OCTOBER 24, 2014

Michael J Riley & Crystal Bolyard
Riley Research Associates

RESEARCH | INSIGHT | KNOWLEDGE

TABLE OF CONTENTS

Executive Overview	1
Introduction	2
Methodology.....	2
Results	3

APPENDIX: Questionnaire

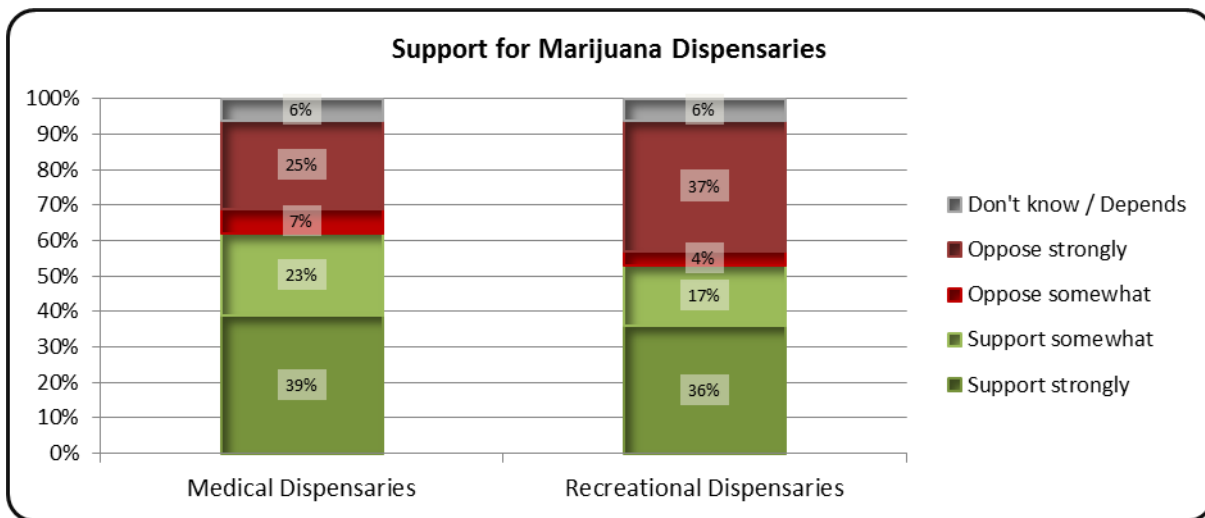


EXECUTIVE OVERVIEW

City of Tualatin residents were asked to indicate their level of support or opposition to medical marijuana and recreational marijuana dispensaries in Tualatin. They were also asked to share their thoughts on guidelines or restrictions for dispensaries in the event they are allowed.

While Tualatin residents were more likely to support medical marijuana dispensaries than recreational marijuana dispensaries (62% support versus 53% support respectively) a majority of those surveyed support both types.

- More than one-third *strongly* support both types of dispensaries.
- Feelings on recreational dispensaries were strong, with equal proportions of residents *strongly supporting* and *strongly opposing* them.
- Males, residents ages 18-34 and 45-54, and those newer to the area were more likely to support both types of dispensaries.



A majority of respondents said they would support a city tax on recreational marijuana if dispensaries are allowed (70%), including 56% who would strongly support the tax. About one-fifth were opposed (22%), and 8% were unsure.

Most residents offered recommendations about where dispensaries should be allowed to be located, if approved. Top-mentioned recommendations usually involved locations dispensaries should not be allowed to be near:

- Where minors congregate
- Parks
- Schools
- Homes and residential neighborhoods
- Daycare operations
- Public or busy areas of town

Respondents were also asked to share other recommended guidelines or restrictions for dispensaries, should they be approved. Top-mentioned suggestions included:

- Age restrictions on customers
- Limited hours of operation
- Non-retail sites
- Regulated like alcohol
- Limited signage
- Enhanced security



INTRODUCTION

The City of Tualatin was interested in hearing from its residents regarding levels of support and opposition to allowing medical and/or recreational marijuana dispensaries in Tualatin, and what, if any, restrictions residents would prefer (in the event dispensaries are allowed). Riley Research Associates was asked to conduct a representative survey among residents to hear opinions and preferences.



METHODOLOGY

Riley Research Associates worked with Tualatin to develop the methodology and questionnaire. A random-sample telephone survey among residents was conducted. Respondents were also asked to confirm that they live within the City of Tualatin.

A total of 346 interviews were conducted. The sample of 346 produces a margin of error of +/-5.2% at a 95% level of confidence. Interviews were conducted from October 13th through October 23rd, 2014.

The report includes question-by-question responses, with statistically significant demographic insights as applicable. Verbatim comments are included in the report; cross-tabulations are bound separately.

In order to better reflect the residential population, the survey sample was weighted for age and gender, creating a comparable proportion of respondents. The data is presented in percentages, with the top row of each table citing the percentage sign (%). Some response percentages are presented as a "0;" this indicates that while that response was given, it was given by too few people to round up to 1%. Not all responses add to 100% due to accepting multiple responses and/or rounding.



RESULTS

As you may be aware, sales of medical marijuana is already allowed. However, a statewide measure to legalize recreational marijuana will be on the ballot this November, and the Tualatin City Council would like to hear your views on a number of related issues.

Q1. First of all, regarding medical marijuana, would you support or oppose allowing medical marijuana dispensaries in Tualatin? (Strongly or somewhat?)

The majority of Tualatin residents would support allowing medical marijuana dispensaries in Tualatin (62%), including 39% who would strongly support allowing the dispensaries. About one-third opposed the dispensaries, and 6% were unsure.

Some groups were more likely to support medical marijuana dispensaries than others:

- Males (65%)
- Ages 18-34 (80%) and 55-64 (61%)
- Newer residents of Tualatin (73%)

	Total
Total Participants	346
<u>Support</u>	62%
Support strongly	39
Support somewhat	23
<u>Oppose</u>	32%
Oppose somewhat	7
Oppose strongly	25
<u>Don't know / No response</u>	6%
Not sure/Depends/Undecided	1
Don't know / Refused	5

Q2. The state of Oregon has already placed some restrictions on where medical marijuana dispensaries can be located. For example, they cannot be located within 1,000 feet of a school.

If dispensaries are allowed to locate in Tualatin, what, if any, additional restrictions would you advise the council to place on where such operations can or cannot be located? (Unaided, multiple responses)

Residents named a variety of restrictions they would recommend in terms of where dispensaries could be located, namely away from where minors congregate (19%), away from parks (14%) and schools (14%), and away from homes (13%). With the majority citing at least one recommended restriction (59%), 29% had no additional recommended restrictions, and 12% were unsure.

	Total
Total Participants	346
Away from places where minors congregate	16%
Away from parks	14
Away from schools	14
Away from homes / Non-residential	13
Away from daycare operations	9
Away from public / Busy places (restaurants, downtown, malls, etc)	6
Don't support / Want in Tualatin	6
In medical offices / hospitals / medical settings	4
Away from major thoroughfares / main roads	4
Away from churches / senior centers	3
In industrial / commercial areas	3
Near police stations / Monitored by police	2
Away from business / commercial areas	1
In liquor stores	1
Miscellaneous	8
None / No restrictions	29
Unsure / Don't know / Can't think of any	12

Q2. The state of Oregon has already placed some restrictions on where medical marijuana dispensaries can be located. For example, they cannot be located within 1,000 feet of a school.

If dispensaries are allowed to locate in Tualatin, what, if any, additional restrictions would you advise the council to place on where such operations can or cannot be located? (Do not read list – Mark all that apply)

Miscellaneous Comments

Away from hospitals (3)

1,000 feet from a school is too far

Close to a rehab center

Designated areas

Follow standard codes

Good place for Marijuana dispensaries would be near the Fred Meyers store and logically next to the Kaiser Hospital and in the King City Area

I want it where it can be monitored, out where people can see who's going in and out, not in the same places as alcohol

I would like them to be somewhere where they did not increase the traffic problems in the city

In stores with alcohol and cigarettes clearly posted

Near hospitals

Next to a tavern

Next to Cabelas

Not confined to back alleys. They need to be out in the open to see who's coming or going.

Not near liquor stores

Not near pharmacies

Not too convenient

On a bus line

On pacific highway

Only on major thoroughfares

Place by Martinazzi square

Somewhere where there is a lot of visibility

Stick with the current stuff

There should be a distance regulation

They need to be in a very inconvenient place way off the beaten path

Well lit in a high trafficked area

Where it can handle excessive traffic

Would have to be determined on a case by case basis

Q3. Next, regarding recreational marijuana: One consideration regarding whether or not to ban recreational marijuana dispensaries is a rule that says cities which ban recreational dispensaries will not get a share of any state taxes raised from marijuana sales.

Considering that along with any other issues, would you support or oppose allowing recreational marijuana dispensaries in the City of Tualatin? (Strongly or somewhat?)

About half of residents would support allowing recreational marijuana dispensaries in the City of Tualatin (53%), including 36% who would *strongly support* the dispensaries. About two-fifths were opposed (41%), including 37% who were *strongly opposed*; 6% were unsure.

Some groups were more likely to support medical marijuana dispensaries than others:

- Males (61%)
- Ages 18-34 (80%) and 55-64 (52%)
- Newer residents of Tualatin (63%)

	Total
Total Participants	346
<u>Support</u>	53%
Support strongly	36
Support somewhat	17
<u>Oppose</u>	41%
Oppose somewhat	4
Oppose strongly	37
<u>Don't know / No response</u>	6%
Not sure/Depends/Undecided	5
Don't know / Refused	1

Q4. In addition to considerations about the location, what other guidelines or restrictions would you recommend that the council consider in order to minimize any potentially negative impacts if recreational dispensaries were allowed? (Unaided, multiple responses)

About half of respondents had a recommended restriction if recreational dispensaries were allowed, namely age restrictions on who could purchase marijuana (16%), limited hours of operation for the dispensaries (12%), a general opposition to allowing dispensaries (7%), and not allowing them in retail areas (6%).

	Total
Total Participants	346
Age restrictions / No minors allowed	16%
Limited hours	12
Don't allow / No dispensaries	7
In a business park / Non-retail site	6
No advertising allowed	4
Regulated / monitored like alcohol and bars	4
Limited signage / Low profile signs	4
Bars on windows / Enhanced security / Lighting	3
Limit quantities / frequencies of purchasers	2
Monitor customers / background checks	2
Limit number of dispensaries per town / per area	2
No public consumption	1
A stand-alone building	1
Same restrictions as medical marijuana	1
No edible marijuana products	0
Not on the ground floor of building	0
On the ground floor of building	0
Miscellaneous	11
None / No guidelines or restrictions	26
Unsure / Don't know / Can't think of any	27

Q4. In addition to considerations about the location, what other guidelines or restrictions would you recommend that the council consider in order to minimize any potentially negative impacts if recreational dispensaries were allowed? (Unaided, multiple responses)

Miscellaneous Comments

Enforcement / Accountability

Better background checks for the employees of the dispensaries

Don't enable the customers

Drug testing, cannot use it within so many hours of their job

Enforcement from the city to ensure that these locations are able to manage the traffic flow. Also, prosecute any adults that purchase for minors.

Heavy fines

How much and who can sell it needs to be really strict. They need to go along with regulations

Impairment and bad behavior fines

Monitor what the kids are doing

Monitored so that you can't drive after you've had any

Monitoring by law enforcement

More police officers to control the streets, in the schools too because i don't want legalizing marijuana to interfere; we have a good community

More restrictive than they have for smoke shops; there should be disclaimers about health and brain side effects, like on cigarette packs

Name signs, police to arrest them, can check them if they find some on them

Not be permitted to drive

Not just anybody should be able to buy it. What if someone had been in jail and just came out? It would be easy for him to hang out with friends and not prioritize his life and do more important things. It can be addictive; the younger a person is the easier it is for them to make bad choices

Over the age of 21, can't be done while driving or under the influence

Permanent police position outside the door, and check all ids

Pricing restrictions

Regulate days

The dispensaries should be held liable for all the people who get hurt by people driving while under the influence of marijuana

Traffic and loitering

Oversight

Form a committee

I would leave to the council

Regulated by the city and not by the state

Regular audits

State laws

Q4. In addition to considerations about the location, what other guidelines or restrictions would you recommend that the council consider in order to minimize any potentially negative impacts if recreational dispensaries were allowed? (Unaided, multiple responses)

Miscellaneous Comments (Continued)

Building restrictions

Clear signage

Keep it respectful and no bright lights, same restrictions as bars

Limit the size of the buildings

Make it clean, neat, and tidy

Make sure people are carding

Taxing and regulating

A high tax

Don't overtax

Huge taxes

Put a high tax on it

Miscellaneous

EBT

Every restriction in the book

I don't think it should be sold to the general public

If a city doesn't want them in their city limits, then that's kind of runs contrary to the law. If it's legal for recreational use, it should be legal all over; state law is state law

Keep it for pharmaceutical purposes

Let people vote before a decision

Mandatory drug testing of any public employees

Maybe dispensaries could be part of a pharmacy

Online operation where it gets shipped to them, adequate parking

Purchasers must reside within a ten mile radius of the city

Take a look at Colorado and do what they do

The boundaries should be at least for the whole city of Tualatin I am just seriously opposed to marijuana recreational especially

The city should vote or opt out prior to November to ban recreational marijuana

Tualatin controlled locations, follow what they set in terms of reputation of medical dispensaries, places that serve alcohol

Q5. If the council opts to allow recreational marijuana dispensaries, would you support or oppose having the council impose a city tax on marijuana sales? (Strongly or somewhat?)

The majority of respondents would support a city tax on marijuana sales if recreational dispensaries were allowed (70%), including more than half who would *strongly support* the tax (56%). About one-fifth would likely oppose the tax (22%), and 8% were unsure.

Residents ages 35-44 (91%) and those who were newer to Tualatin (89%) were more likely than others to support a city tax on recreational marijuana.

	Total
Total Participants	346
Support	70%
Support strongly	56
Support somewhat	14
Oppose	22
Oppose somewhat	11
Oppose strongly	11
Don't know / No response	8%
Not sure/Depends/Undecided	7
Don't know / Refused	1

Q6. Are there any other final comments or questions you would like to add?

Some respondents voiced opposition of the dispensaries, sharing concerns of the impact it could have on the community, specifically the children, and that they don't feel it is a necessary thing to allow. Others voiced support for dispensaries, comparing them to liquor stores and saying they feel the legalization is inevitable. Some shared concerns about the location and restrictions that would be placed on dispensaries.

Please see page 12 for full list of responses.

Q7. About how many years have you lived in Tualatin?

	Total
Total Participants	346
1-2 years	13%
3-5 years	14
6-10 years	27
11-20 years	25
21-40 years	18
41+ years	2
Refused	2
Mean	13 years

Q8. May I ask your age?

	Total
Total Participants	346
18-34	35%
35-44	20
45-54	20
55-64	16
65+	11
Refused	0
Mean	44

Q9. Gender

	Total
Total Participants	346
Male	49%
Female	51

Q6. Are there any other final comments or questions you would like to add?

Opposed

- Because of the type of area it is: that's why I oppose this. I am not against marijuana being legalized; I would like to see it legalized so instead of cops going after people who smoke pot they're going after more important things. I just think it should be out of neighborhood areas and in more important areas
- Don't do it
- I am against marijuana period
- I am against marijuana use
- I am biased the people I work with at the Center of Family History I believe they are pretty much against marijuana. My position is far enough to the left and non-marijuana related
- I am in the transportation industry and I am strongly opposed to it
- I am really opposed to it and formally from Colorado; I have friends that say it is just very bad there. The use of marijuana and they have not lived off to the potential taxes they expected to get and not received it. I just opposed having marijuana legalized in Oregon
- I do not want any marijuana in the City of Tualatin
- I do understand the value of medical marijuana because I am a pharmacist, but at least in a recreational perspective it's a huge mistake, what Washington and Colorado has done, and I will oppose it in this state. There is a reason to have dispensaries in the City of Portland, but I would oppose having dispensaries where I live in Tualatin. I would hope the Council would oppose any dispensing establishments in Tualatin, especially recreational
- I don't like or support recreational marijuana. Medical is OK. It is a stepping stone drug; kids will try other drugs too after they try marijuana
- I don't want it, I have seen all the marketing for and against and it is a gateway drug, I don't want it around.
- I don't like casual use is criminalized as much as it is. I'm not in favor of allowing recreational use
- I don't support it
- I hope recreational dispensaries are a failure on the ballot
- I hope this does not happen. What are the ramifications from this?
- I just hope it doesn't go through
- I just hope it doesn't pass
- I just prefer that they keep it out of Tualatin
- I oppose it completely maybe they should tax it so highly that no one can afford to smoke it.
- I oppose the charging of taxes on marijuana sales, because I don't want us to be tied to the success of marijuana businesses.
- I really oppose recreational dispensaries
- I really oppose the dispensaries. We have a theft problem in our area, because of a known drug house on the neighborhood.
- I regret that there is one more intoxicant available
- I see no value in recreational marijuana publicly available. I feel strongly that tax income does not justify recreational marijuana
- I strongly oppose marijuana use as a physician, and strongly oppose legalization of marijuana, dispensaries or any other usage. Please look at the medical and scientific literature coming out just about monthly, showing how it causes permanent damage to various organs and functions of the body including brain damage. The governor of Colorado has just publicly stated that it was a mistake to legalize marijuana in his state. Studies come out every month showing how detrimental marijuana is to the body causing permanent damage

Q6. Are there any other final comments or questions you would like to add? (Continued)

Opposed (Continued)

I suppose that I would not support it. It gets lost in the shuffle and people tend to abuse the situation. It is not use I look at it as child service it has good implementation so there is kids that are not and that are looked after good intention and a lot of flaws in the marijuana. I don't approve of medical marijuana dispensaries at all

I think in the long run it will cost more than it will earn to have recreational dispensaries. I would prefer it to not be around our city.

I think it's a bunch of crap. I don't think people need marijuana. That's up to them

I think we should keep marijuana completely out of Tualatin. I think it is a bad idea. Anybody who supports it will not get my vote

I would hate to see the city become a place where marijuana users come for it. We just got rid of jiggles; I'd hate to see it become a point for recreational users.

If council allows this I will vote against them and tell all my friends to vote against them too.

If recreational marijuana is allowed i will consider moving.

It is the stupidest thing to legalize it; it's the same as driving drunk

It isn't a good idea or direction for society

It's the demise of our city, state and country. Our morality and everything

It's a gateway to harder stuff

Just get it out of here; don't want it around

Just that because of my age group I suppose, I consider particularly recreational marijuana to be far too slippery a slope

Keep marijuana out of the city Tualatin and we don't need it, we have other priorities

Keep the marijuana out of our city

Medical marijuana is supposed to be for medical use only. Bringing it to the city of Tualatin is just money-making scam and it would destroy our neighborhood. There's no oversight to be ensuring that it's being used for medical instead of recreational use

My position would be that if council approves marijuana in the city I would oppose the council for everything else because I strongly oppose marijuana and what it does to people

No recreational marijuana for any one

Only that I strongly oppose the ballot measure passing

Recreational use should not be legalized

Should not been on the ballot and if you would take lessons from other states you would not consider it

They need to know it is a gateway drug

We know what it does to people, I just can't believe the governments going to allow this, I'll just pray that god will clean this up

We need to do whatever we can to keep it out; it's going to increase crime. We already have kids smoking pot where police officers are having a hard time with, it'll just make it worse

We would prefer not to have it in the city or if we have to it would be severely limited. I don't think it would be helpful to this family friendly community

Q6. Are there any other final comments or questions you would like to add? (Continued)

Support

Helps a lot of people with medical reasons, to help them extremely to receive the medicine. Thank you for calling and getting my opinion

I believe it should be legal and taxed as high as possible

I don't see a reason why not to have it here why not have it here. It's not any different than having a liquor store in town.

I don't personally smoke pot, but I don't care if other people do. Alcohol's legal. You don't really see too many people fight after smoking some pot. There is one caution; it could put more people high on the road. It would be just as bad as alcohol. That would be my biggest fear, but to be honest, police spend too much time chasing around pot and not doing other things

I don't see a difference between recreational and medical. Anyone who wants a medical card can get it. I am not a personal user, so I have no direct experience with it. There are a lot of things going on I don't understand personally and it doesn't make them wrong. I'm not going to impose myself on this issue unfairly. If people want it they can go elsewhere to get it, it's pointless for us to ban it.

I hope when we pass the medical marijuana that the city of Tualatin and lets it happen and makes it happen

I just approve

I just think the time is right to support it, especially for medical reasons. I'm in a lot of pain and I would love medical marijuana near my home

I just think we need to; I think it's probably something that needs to be done. I think fewer restrictions, the better because you're just going to end up with more criminals; people have to use their common sense

I say we give it a try and if it doesn't work we will vote it back out. Let's see if any benefits of medical marijuana can help people out. I have also heard that this plant is good for other things such as making paper out of it. If we can find a way to use it as a useful benefit why not put a little bit of research into that

I support the legalization of marijuana, and think it should have been legalized 40 years ago I was, back in the 70s, in Washington, able to have an oz. of marijuana and it wasn't illegal in those amounts. That seemed reasonable there. I think the prohibition needs to be over.

I would encourage looking at benefits of all. Any other business if done properly is still in infancy and should have proper control anywhere and not opposed to distance of schools

I would support a city tax if it was used for the appropriate thing like for the schools

I've never done any drugs but it will become legal and if its revenue for the states, why not.

It should be available to seniors near the senior centers. We need one in the city or they will go elsewhere for it. Might as well have it in the city, banning it in the city limits won't deter usage for those who want to use it.

It's about time we legalized marijuana

Legalizing it is inevitable city needs to participate in the process

Long overdue, I'm tired of people's lives being ruined because they make the mistake. There is nothing special about it, it should just be legal. OLCC should cover both; it seems weird to have one building for alcohol control, and another for marijuana

More people die from alcohol use than marijuana use, so it should be up to them. A lot of money would be made

There are so many crimes being committed, the resources are limited

They should legalize it

Q6. Are there any other final comments or questions you would like to add? (Continued)

Concerns / Recommendations

Before allowing any dispensaries, there would have to be a public hearing to allow them to open the business

I had heard that one way to regulate the legalization would be to treat it like and have the OLCC regulate it and using the same system to regulate marijuana. I think restrictions on the dispensaries would be discriminatory against people who need their services.

I heard today on a radio station they have not set guidelines for driving under the influence of marijuana

I hope they don't mess around with medical patients; they have other handicaps they can't afford that; I have heard that the price has doubled. Make sure that recreational doesn't overlap with those who use it as medicine.

I just hope they wouldn't put it on a main street, out of sight.

I think anything that is used as a drug should be regulated by the FDA and sold by pharmacies.

Any drug that can be used recreationally, shouldn't be allowed

I think my biggest concern is crime, and also people driving under the influence. I'm concerned with children using it

I think the rules for drunk driving should apply for driving under the influence of marijuana. The impact of lung cancer is the same for cigarettes as well as marijuana

I think they should clearly designate the restrictions when they pass the law that it shouldn't be like Washington. They should examine how things are already working in other states and look at medical marijuana and look at other restrictions and develop the bill and not leave it wide open with no restrictions

I think they should pay taxes on it

I would like the money to go into law enforcement and drug treatment. Otherwise we shall become dependent on it like legalized gambling. I would like to have recreational marijuana approved for limited basis only to be reviewed and looked at again after 3 years or so. Someone should collect the revenue from it and it should be distributed to law enforcement and drug treatment.

I'm a nurse and I'm concerned about people coming in to the hospital after taking too much, like an overdose

If permitted, recreational use of marijuana should be limited and should be for adults only

If they do allow recreational same restriction on medical to be only located in business district easy to keep an eye on it.

In any case whether they buy or not either way they need to provide a lot of info on it and the side effects and any negative effects. Provide info before they buy maybe sign off on awareness.

Give harmful and addiction information of the drugs.

It should be away from main stream population

Keep the price down. Right now the prices are triple to what you can get it on the street; try to bring the prices down to the black market or it will fail

Make the tax very high like on cigarettes

My concern with legalizing it is because of the children

My family and I have talked about this and we have teenagers and we think marijuana is just the same as alcohol we think it might eliminate the trouble it comes with but I don't want it in the hands of kids.

My major thing is i am inherently opposed to marijuana establishments where kids walk by them or see them. If they can do it the in the city without kids seeing it i am ok.

On the first medical dispensaries, to place a police officer outside to check all IDs 24/7

Q6. Are there any other final comments or questions you would like to add? (Continued)

Concerns / Recommendations (Continued)

The city shouldn't be in a rush to support on this until all things are known about this like impacts on minors, children, and the economy; because when the government sells it, it's cheaper to buy on the black market then it is to buy in a store

The most important thing is that children are protected. I would like to see strict punishment for serving to minors

The only one would be that I hope Oregon doesn't make the same mistakes as Washington, that they are taxing too much making a black market

The state should be the one growing it, so they take it out of the hands of individuals

There should be a lot more testing of children at school. In the past it was too expensive, but I think it is no longer. I think there should be a tax on recreational marijuana, but not medical marijuana.

They should research the marijuana to determine if it has legitimate medical uses.

They shouldn't even do medical pot. It is just an excuse for people to use it. It can cause more problems more than it helps. It is bad enough having to inhale it generally and I am a smoker

They would already make money on the state sales tax just not city tax. You don't want the building to look bad keep it nice.

To my knowledge the current measure restricts cities from imposing marijuana taxes

Questions

Are there going to be bars for smoking weed?

Can they require cigarettes be sold in the same stores

I don't see where they are pulling the sales tax

I know there is a one year moratorium on dispensaries so cities can decide whether or not to have them. Is this going to be extended?

I would like to know how they are looking at other places, where it has been approved, and any consequences or lack of consequences

This measure 91 would cut down violence by cartels?

When will we know?

Where can I smoke it? Will it be the same as tobacco?

Where would they be contemplating to put a place to put a dispensary?

Undecided

I have very mixed feelings on the subject

I'm kind of in-between on it not really strong opinion that I find good and bad

I'm sure it's going to pass I'm just kind of concerned with how it pans out, I guess time will tell

I'm undecided on all of it

Q6. Are there any other final comments or questions you would like to add? (Continued)

Miscellaneous

I appreciate the city council getting the opinions of the City

I don't smoke marijuana

I just see in these apartments...they just pass it out and they do it. They have little parties at their house and they spray. The other day the caretaker had to go in to paint and scrub. It's a non-smoking building

I wish they would conduct surveys like this on more important things

If we start relying on taxes for marijuana, because then it will become independent

Marijuana used to be seen as a poison now it's seen as a holy medicine. I don't understand.

Not an issue for me

Nothing you can do, I think that you just hope for the best. Just watch and be careful

The whole topic and the people who vote on it, then sit down and drink and discuss how to spend the money, it is silly to me.

Too many resources are spent implementing laws that should be changed. I don't smoke pot

Wait to see marijuana legalized



APPENDIX: QUESTIONNAIRE

Hello, my name is _____ with Riley Research Associates, calling on behalf of the City of Tualatin with a quick, confidential survey to hear your thoughts about Marijuana Dispensaries.

(IF NECESSARY) I'm not trying to sell or sign you up for anything. We're simply gathering feedback from Tualatin residents about marijuana dispensaries. The survey will take about five minutes. Is now a good time to ask you a few questions?

To confirm, do you live in the City of Tualatin? (Continue with survey if "yes")

As you may be aware, sales of medical marijuana is already allowed. However, a statewide measure to legalize recreational marijuana will be on the ballot this November, and the Tualatin City Council would like to hear your views on a number of related issues.

Q1. First of all, regarding medical marijuana, would you support or oppose allowing medical marijuana dispensaries in Tualatin? (Strongly or somewhat?)

- | | |
|--|--|
| <input type="checkbox"/> ₁ Support strongly | <input type="checkbox"/> ₄ Oppose somewhat |
| <input type="checkbox"/> ₂ Support somewhat | <input type="checkbox"/> ₅ Oppose strongly |
| <input type="checkbox"/> ₃ (Not sure/Depends/Undecided) | <input type="checkbox"/> ₉ (Don't know / Refused) |

Q2. The state of Oregon has already placed some restrictions on where medical marijuana dispensaries can be located. For example, they cannot be located within 1,000 feet of a school.

If dispensaries are allowed to locate in Tualatin, what, if any, additional restrictions would you advise the council to place on where such operations can or cannot be located?

(As necessary, if respondent says only that they support/oppose dispensaries, repeat the question and emphasize that the question is about any restrictions they would place on WHERE they could be located, IF they WERE allowed) (Do not read list – Mark all that apply)

- | | |
|--|--|
| <input type="checkbox"/> ₀₁ Away from parks | <input type="checkbox"/> ₁₀ Don't support / Want in Tualatin |
| <input type="checkbox"/> ₀₂ Away from homes / Non-residential | <input type="checkbox"/> ₁₁ Near police stations / Monitored by police |
| <input type="checkbox"/> ₀₃ Away from major thoroughfares / main roads | <input type="checkbox"/> ₁₂ Away from business / commercial areas |
| <input type="checkbox"/> ₀₄ Away from daycare operations | <input type="checkbox"/> ₁₃ Away from public places (restaurants, malls, theaters, etc) |
| <input type="checkbox"/> ₀₅ Away from places where minors congregate | <input type="checkbox"/> ₁₄ Away from churches / senior centers |
| <input type="checkbox"/> ₀₆ In medical offices / hospitals / medical settings | <input type="checkbox"/> ₉₇ None / No restrictions |
| <input type="checkbox"/> ₀₇ In liquor stores | <input type="checkbox"/> ₉₈ Other (specify) |
| <input type="checkbox"/> ₀₈ In industrial / commercial areas | <input type="checkbox"/> ₉₉ (Unsure / Don't know / Can't think of any) |
| <input type="checkbox"/> ₀₉ Away from schools | |

Q2b. Other:

Q3. Next, regarding recreational marijuana: One consideration regarding whether or not to ban recreational marijuana dispensaries is a rule that says cities which ban recreational dispensaries will not get a share of any state taxes raised from marijuana sales.

Considering that along with any other issues, would you support or oppose allowing recreational marijuana dispensaries in the City of Tualatin? (Strongly or somewhat?)

- | | |
|--|--|
| <input type="checkbox"/> ₁ Support strongly | <input type="checkbox"/> ₄ Oppose somewhat |
| <input type="checkbox"/> ₂ Support somewhat | <input type="checkbox"/> ₅ Oppose strongly |
| <input type="checkbox"/> ₃ (Not sure/Depends/Undecided) | <input type="checkbox"/> ₉ (Don't know / Refused) |

Q4. In addition to considerations about the location, what other guidelines or restrictions would you recommend that the council consider in order to minimize any potentially negative impacts if recreational dispensaries were allowed?

(As necessary: if respondent says only that they support/oppose dispensaries, remind them that the question is about what rules or restrictions they would recommend IF they WERE allowed) (Do not read list – Mark all that apply)

- | | |
|---|---|
| <input type="checkbox"/> ₀₁ Limited hours | <input type="checkbox"/> ₁₁ Regulated / monitored like alcohol and bars |
| <input type="checkbox"/> ₀₂ Limited signage / Low profile signs | <input type="checkbox"/> ₁₄ Same restrictions as medical marijuana |
| <input type="checkbox"/> ₀₃ Bars on windows / Enhanced security / Lighting | <input type="checkbox"/> ₁₅ Monitor customers / background checks |
| <input type="checkbox"/> ₀₄ A stand-alone building | <input type="checkbox"/> ₁₆ Limit number of dispensaries per town / per area |
| <input type="checkbox"/> ₀₅ In a business park / Non-retail site | <input type="checkbox"/> ₁₇ Limit quantities / frequencies of purchasers |
| <input type="checkbox"/> ₀₆ On the ground floor of building | <input type="checkbox"/> ₁₈ No public consumption |
| <input type="checkbox"/> ₀₇ Not on the ground floor of building | <input type="checkbox"/> ₁₉ No edible marijuana products |
| <input type="checkbox"/> ₀₈ Age restrictions / No minors allowed | <input type="checkbox"/> ₉₇ None / No guidelines or restrictions |
| <input type="checkbox"/> ₀₉ No advertising allowed | <input type="checkbox"/> ₉₈ Other (specify) |
| <input type="checkbox"/> ₁₀ Don't allow / No dispensaries | <input type="checkbox"/> ₉₉ (Unsure / Don't know / Can't think of any) |

Q4b. Other guidelines / restrictions

Q5. And finally, if the council opts to allow recreational marijuana dispensaries, would you support or oppose having the council impose a city tax on marijuana sales? (Strongly or somewhat?)

- | | |
|--|--|
| <input type="checkbox"/> ₁ Support strongly | <input type="checkbox"/> ₄ Oppose somewhat |
| <input type="checkbox"/> ₂ Support somewhat | <input type="checkbox"/> ₅ Oppose strongly |
| <input type="checkbox"/> ₃ (Not sure/Depends/Undecided) | <input type="checkbox"/> ₉ (Don't know / Refused) |

Q6. Are there any other final comments or questions you would like to add?

Now just a few questions to finish up:

Q7. About how many years have you lived in Tualatin? (As necessary) Your best guess is fine. (Record only whole numbers, round up as necessary) Years in Tualatin _____

Years in area categorized

- ₁ 1-2 years
- ₂ 3-5 years
- ₃ 6-10 years
- ₄ 11-20 years

- ₅ 21-40 years
- ₆ 41+ years
- ₉ Refused

Q8. May I ask your age? Age _____

Q8b. (Record category or if refused) Which of the following categories includes your age? (Read List)

- ₁ 18-24
- ₂ 25-34
- ₃ 35-44
- ₄ 45-54

- ₅ 55-64
- ₆ 65+
- ₉ (Refused)

Those are all my questions. The City of Tualatin would like me to thank you for your time and opinions.

Q9. (Record Gender)

- ₁ Male

- ₂ Female