



MEMORANDUM CITY OF TUALATIN

TO: Honorable Mayor and Members of the City Council

FROM: Sherilyn Lombos, City Manager

DATE: February 11, 2013

SUBJECT: Work Session for February 11, 2013

5:30 p.m. (30 min) – Intersection Safety Camera Update. Intersection Safety Cameras have been in place in Tualatin for two years now. Tonight, the Police Chief will provide historical information regarding the two existing intersections and will review options for the future. Attached is a power point that will be used in the discussion.

6:00 p.m. (30 min) – Towing from Private Property. Attached is a draft ordinance as well as a power point from the City Attorney regarding regulations for towing from private property for the Council's discussion and direction.

6:30 p.m. (10 min) – Tualatin Tomorrow. In February 2006, the City of Tualatin began a community-wide visioning process, called Tualatin Tomorrow. The project identified community issues, analyzed emerging trends, articulated Tualatin's core community values, created a community vision statement and developed strategic action items to achieve the community vision. Per the adopted plan, the Tualatin Tomorrow Vision and Strategic Action plan is scheduled to be updated this year. Tonight's discussion will focus on the goals, objectives, and timeline for the Tualatin Tomorrow Vision Plan Update.

6:40 p.m. (5 min) – Community Survey. The City of Tualatin conducts a Community Survey every three years to determine resident opinions about the community and services provided by the City. The City will once again partner with The National Citizen Survey who will conduct a statistically valid survey which can be benchmarked against survey information from previous years and with survey information from communities of a similar size throughout the country. Tonight's discussion will provide the Council with an update on the timeline for the survey and a brief overview of the methodology and community outreach plan.

6:45 p.m. (10 min) – Council Meeting Agenda Review, Communications & Roundtable: This is the opportunity for the Council to review the agenda for the February 11th City Council meeting and take the opportunity to brief the rest of the Council on any issues of mutual interest.

City Council Work Session

Meeting Date: 02/11/2013

Kent Barker, Chief of Police - Intersection Safety Cameras

Attachments

Intersection Safety Cameras



City of Tualatin

INTERSECTION SAFETY CAMERAS

How Did We Get There?

- 2006 – Directed by Council to Research Photo Red Light Systems**
- 2007 – First Presentation Given to City Council, including list of most dangerous intersections and results of Video Survey**
- 2008 – Entered into Agreement with Red Flex to Install Systems up to eight (8) Intersections (if needed)**
- 2010 – November-First System Installed**
- 2011 – February-Second System Installed**
- 2012 – Additional Video Survey Conducted**

What's our Objective?

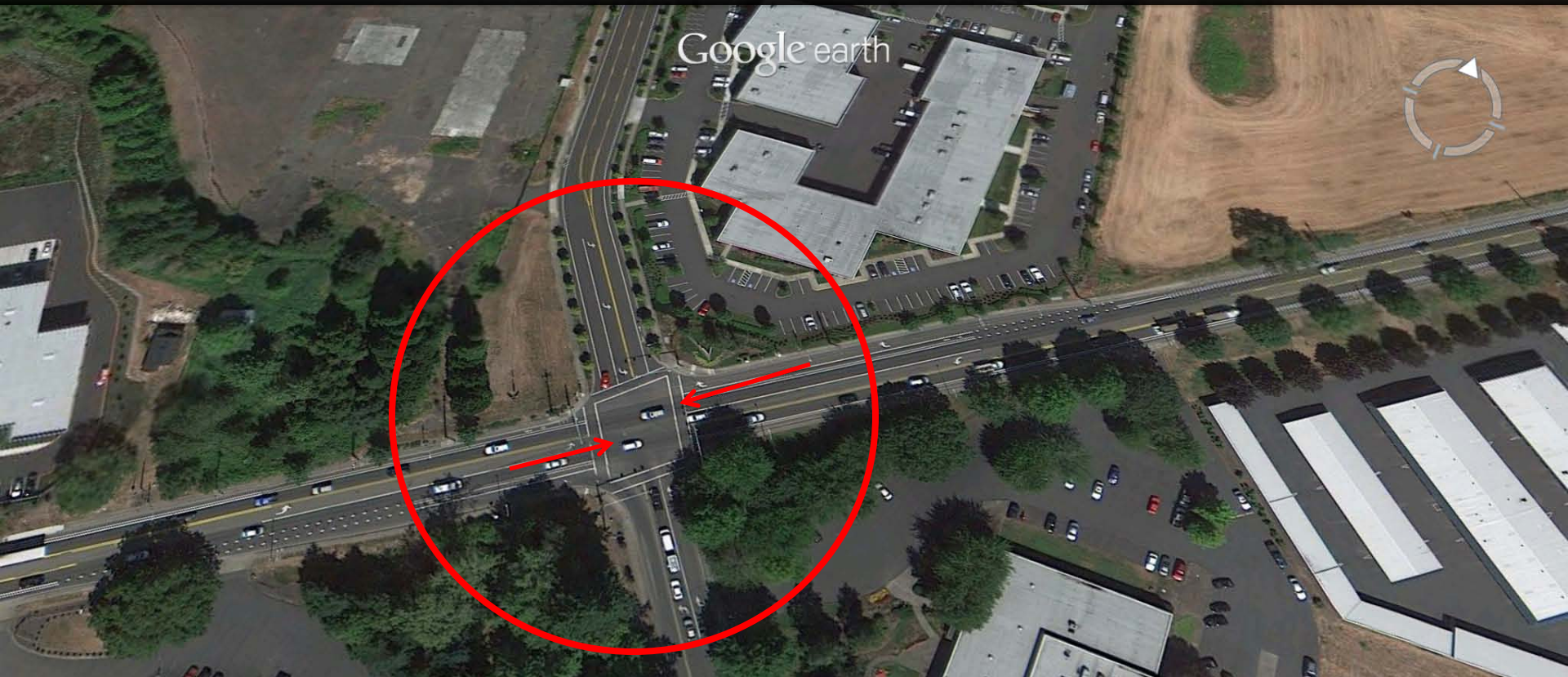
- **Reduce Crashes at these intersections**
- **Reduce Red-Light Violations**
- **Change the Behavior of Drivers -“Red means Stop”**
- **Create a “halo-effect” for drivers in Tualatin**
- **Reduce Traffic Congestion**
- **Improve Officer Safety**

Where Are They And
What Are The Results?

Layers



Tualatin, Oregon 97062



Tualatin-Sherwood Road and Avery/112th

System Installed November 2010 with 30-day Warning Period

Citations Issued December 2010

Red for 30 Seconds



Follow the Leader 1-2-3



Close Call



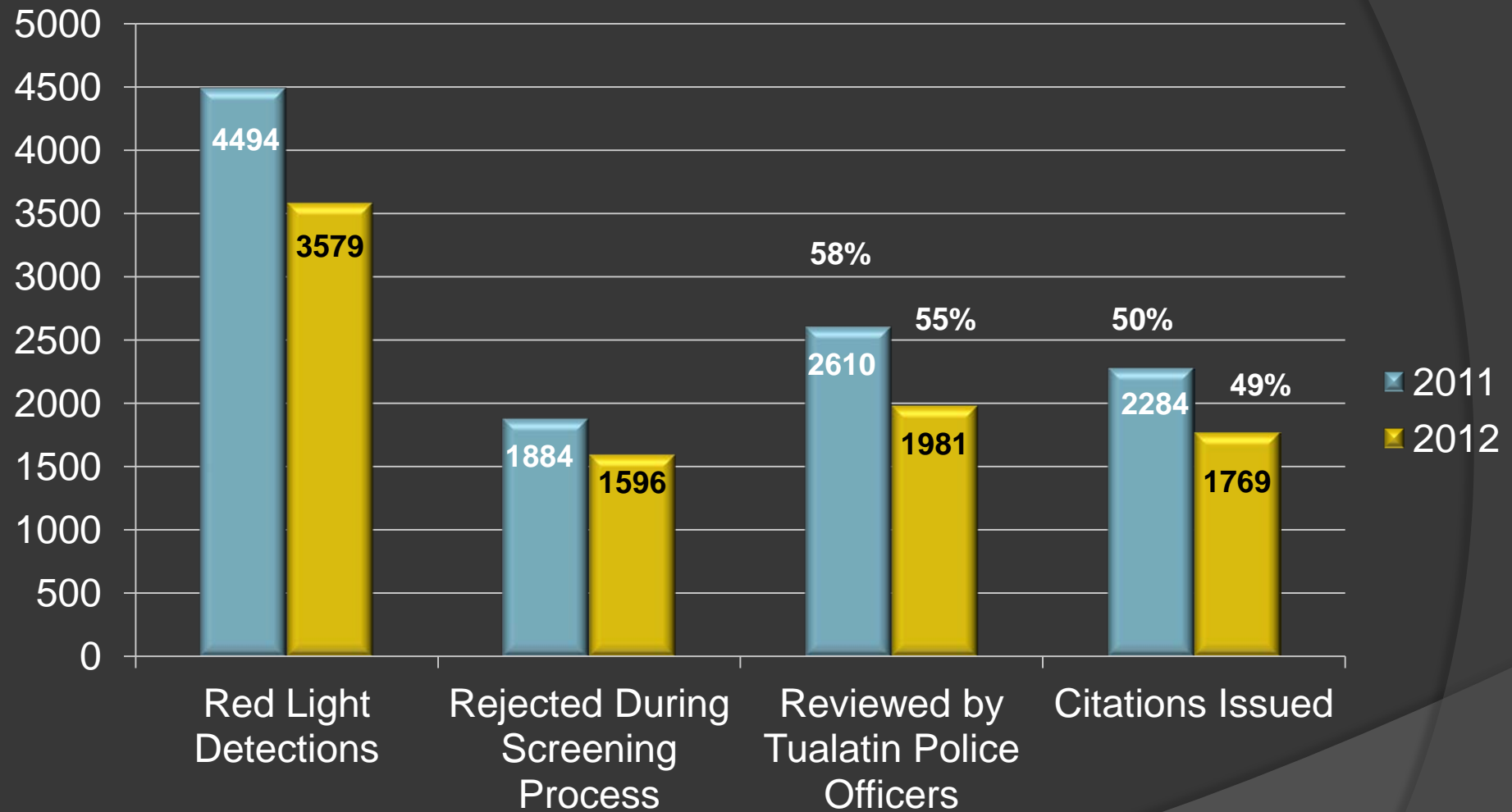
Why you stop first...



First Crash after System Installed



TUALATIN-SHERWOOD ROAD at AVERY/112th

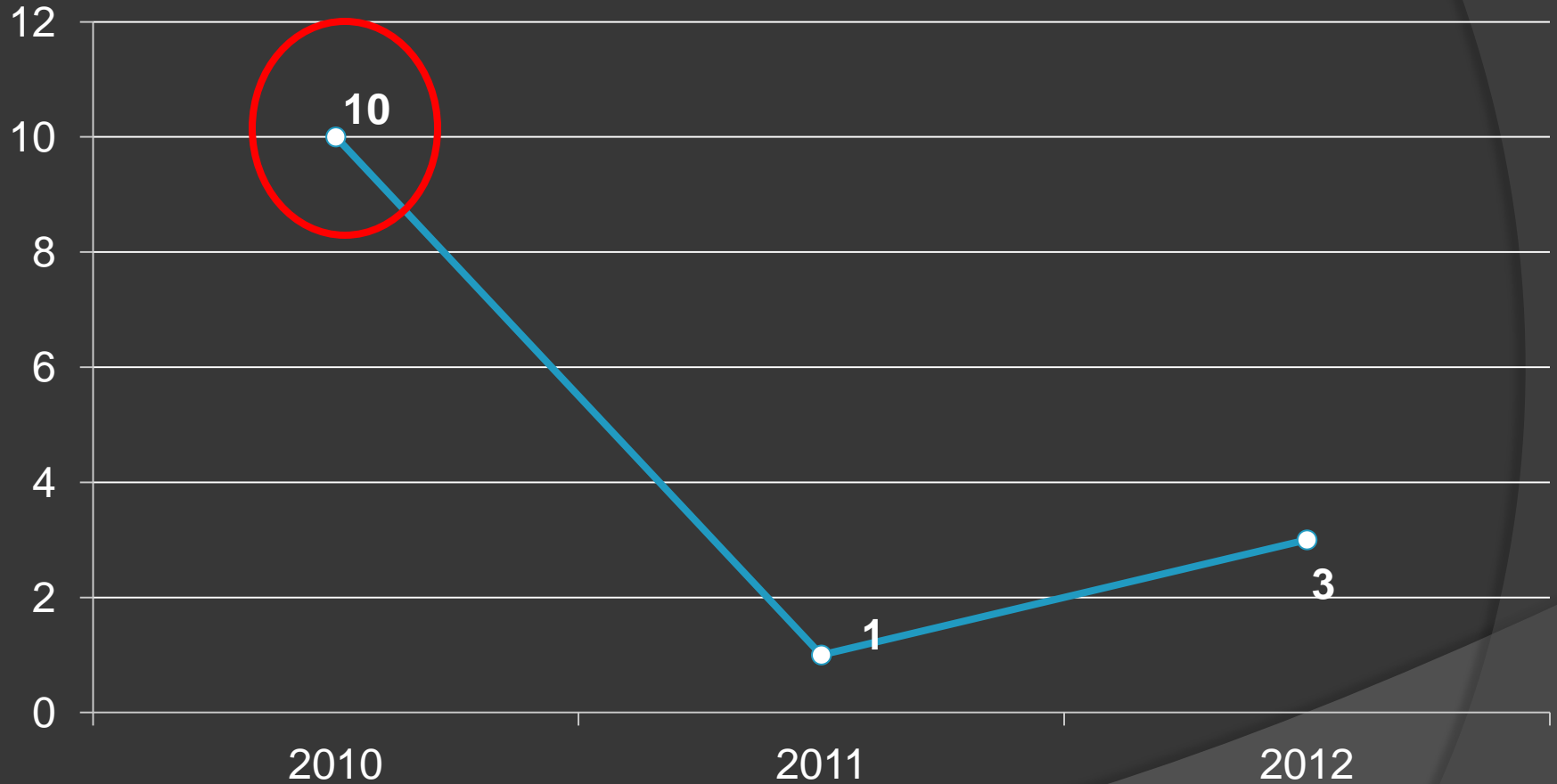


2011 – Apx. 190 Citations per Month or 6 Citations Per Day

2012 – Apx. 147 Citations per Month or 5 Citations Per Day

TUALATIN-SHERWOOD ROAD at AVERY/112th

Intersection-Related Crashes

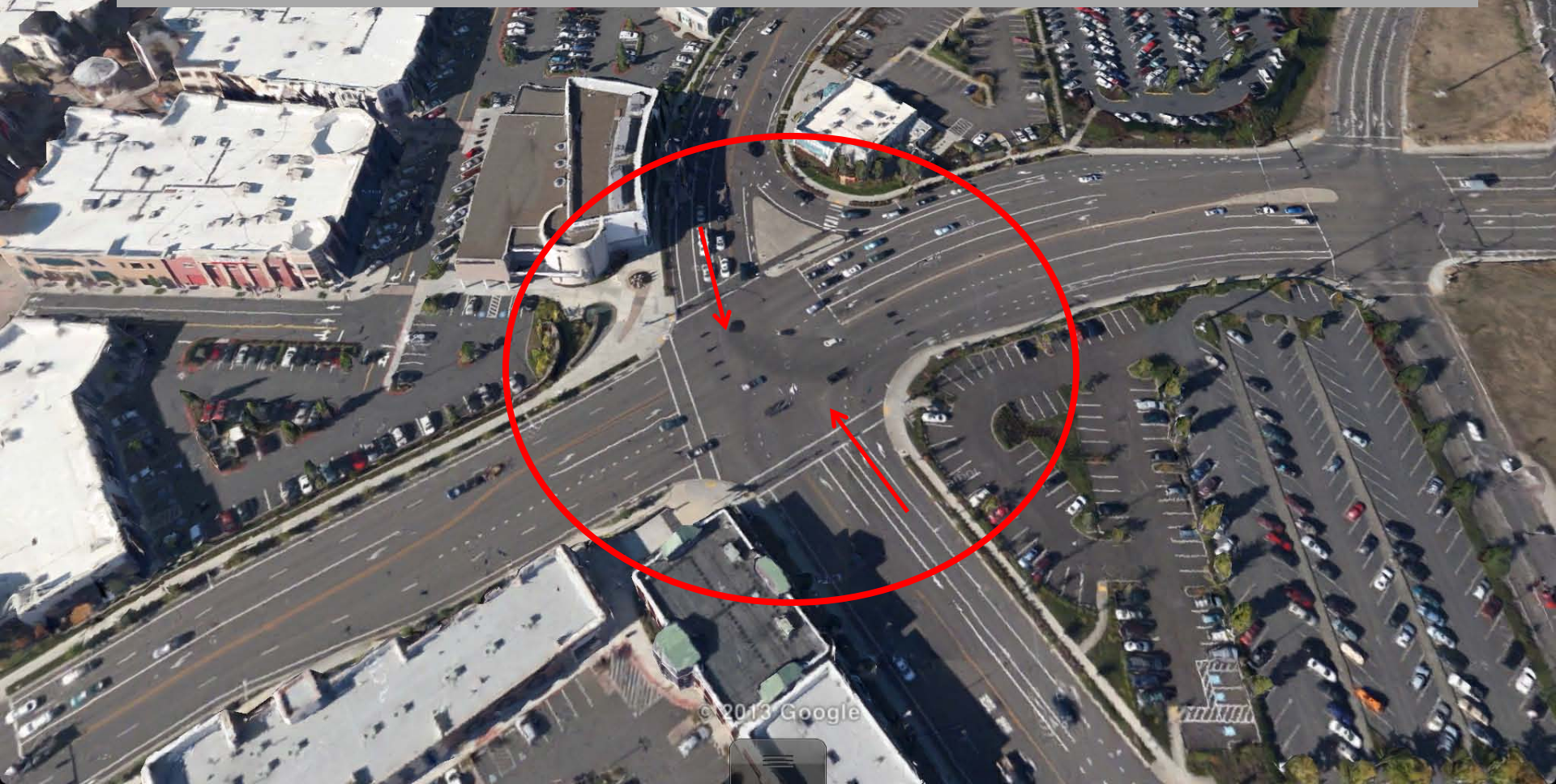


Layers

Lower Boones Ferry at Bridgeport/72nd

System Installed February 2011 with 45-day Warning Period

Citations Issued Beginning April 1, 2011



Left Turn Against Light



Straight Ahead



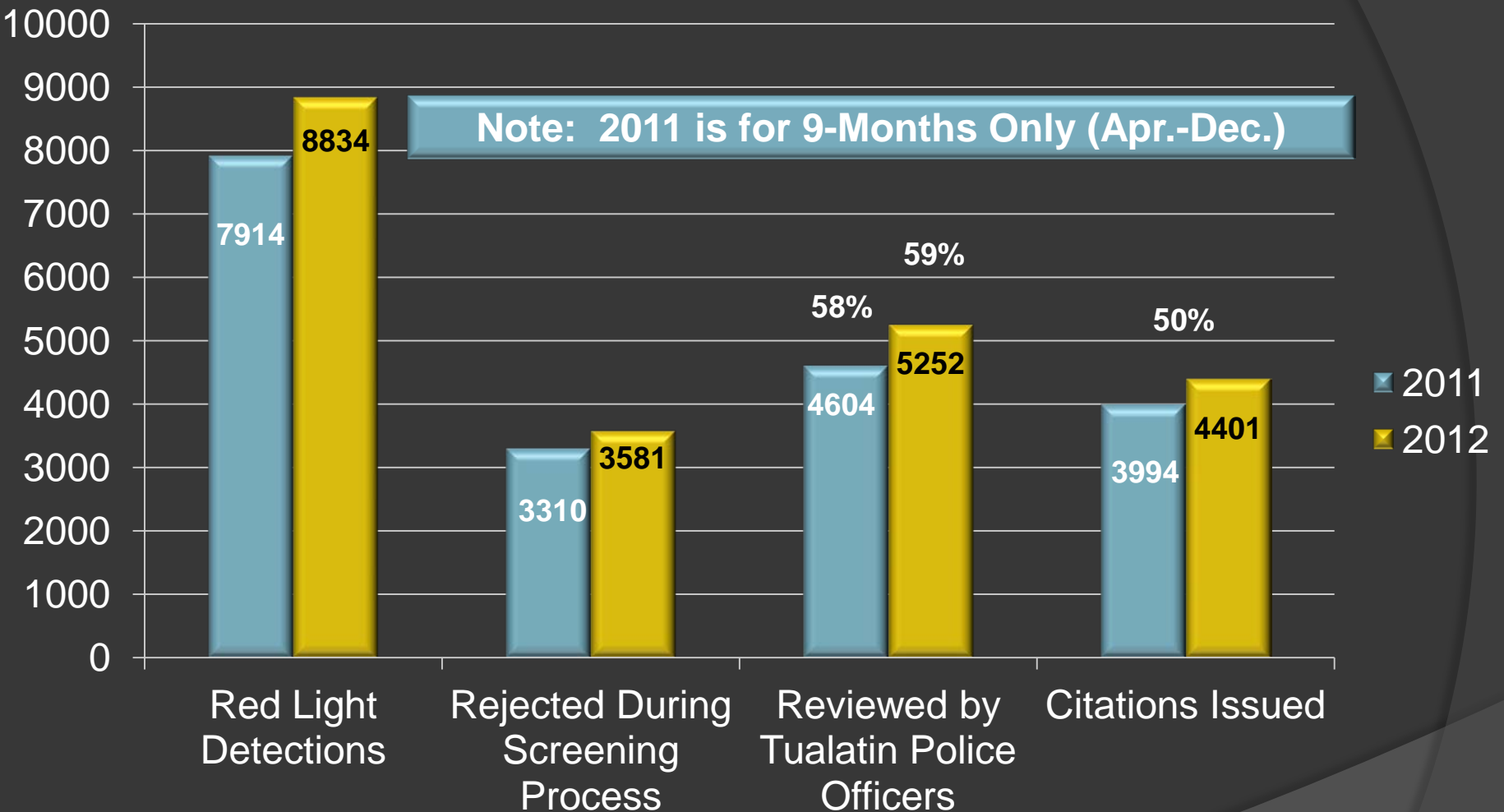
Red Means Stop (not speed-up)



Follow the Leader 1-2-3



Lower Boones Ferry at Bridgeport/72nd

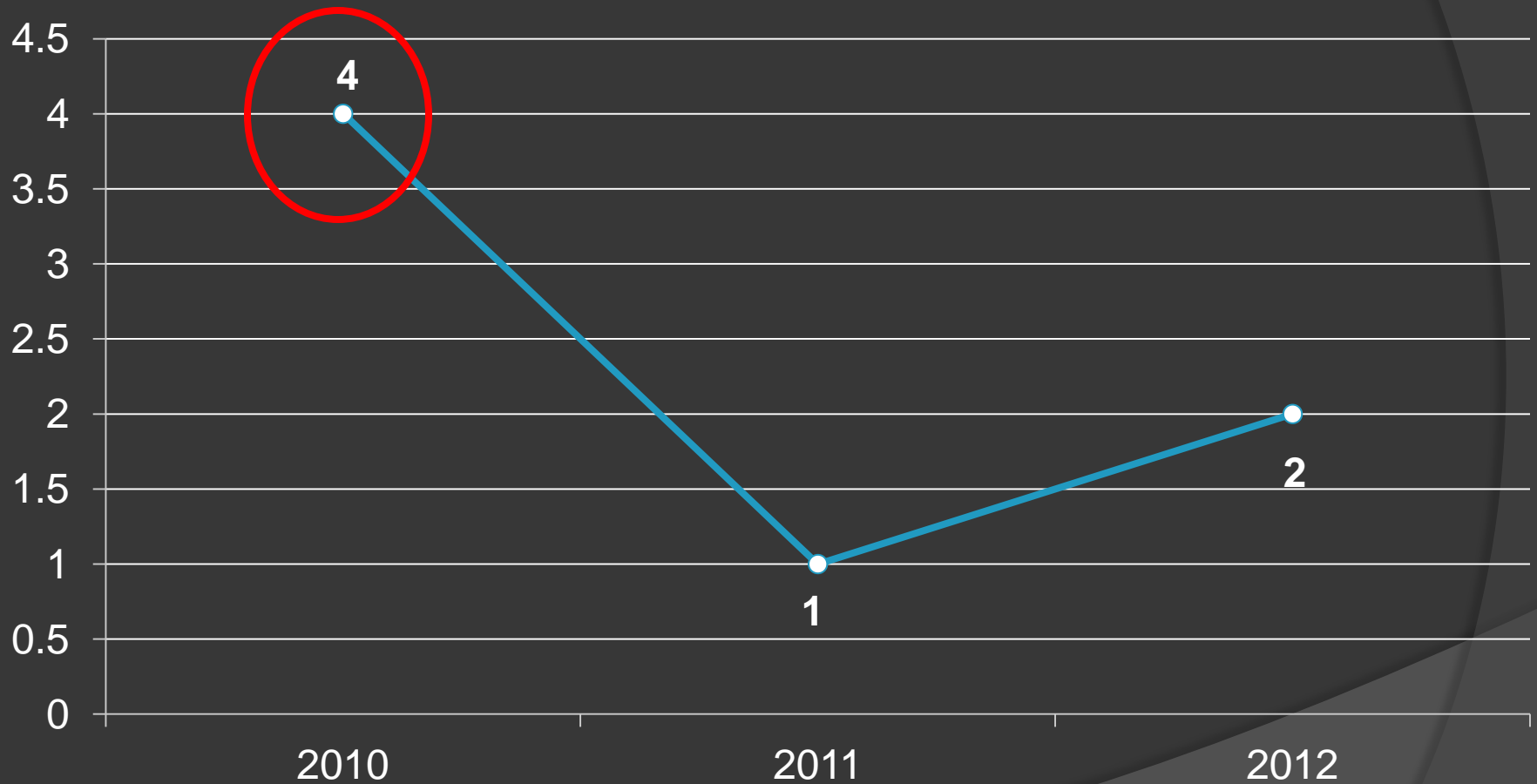


2011 – Apx. 443 Citations per Month or 16 Citations Per Day

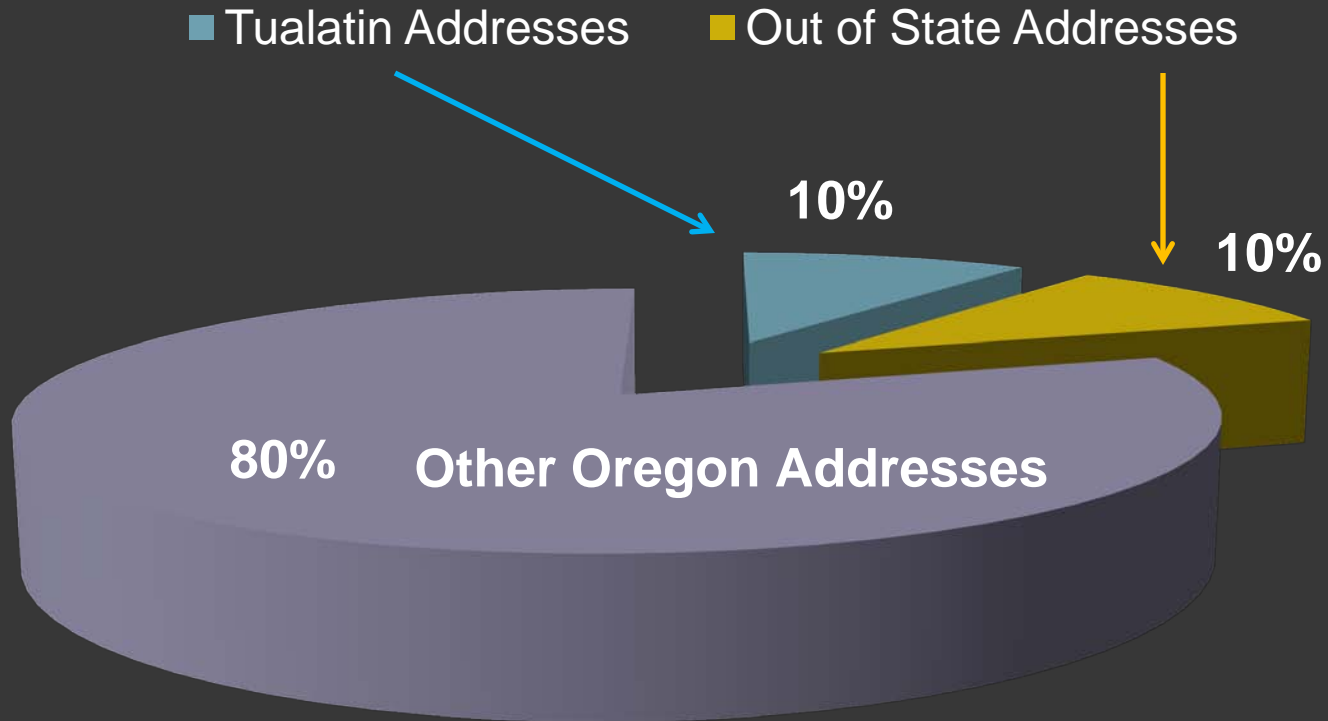
2012 – Apx. 367 Citations per Month or 12 Citations Per Day

Lower Boones Ferry at Bridgeport/72nd

Intersection-Related Crashes



Zip Codes of Citations Issued 2011-2012

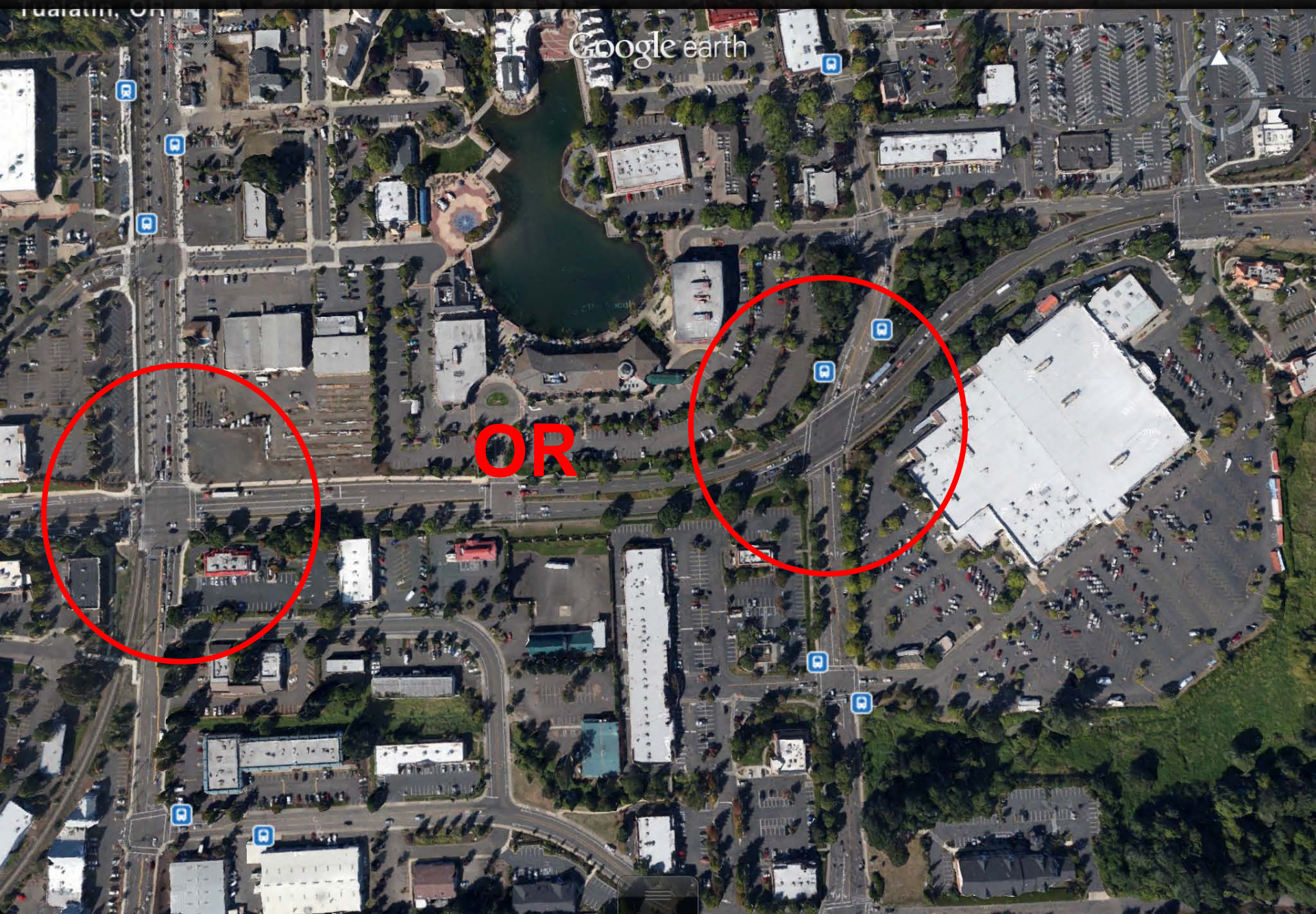


Where Should We Go Next?
or should we?

Layers

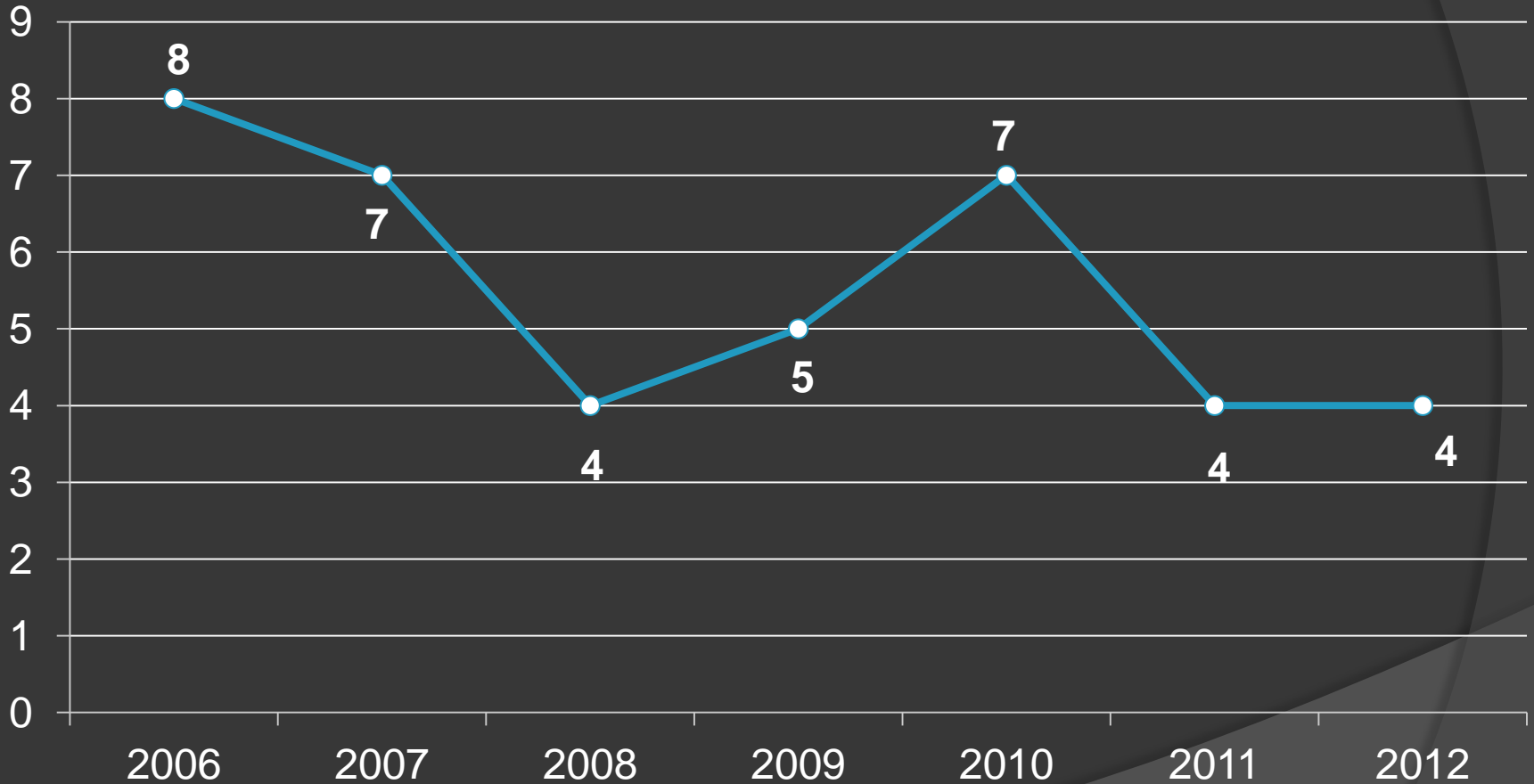


Tualatin, Oregon 97062



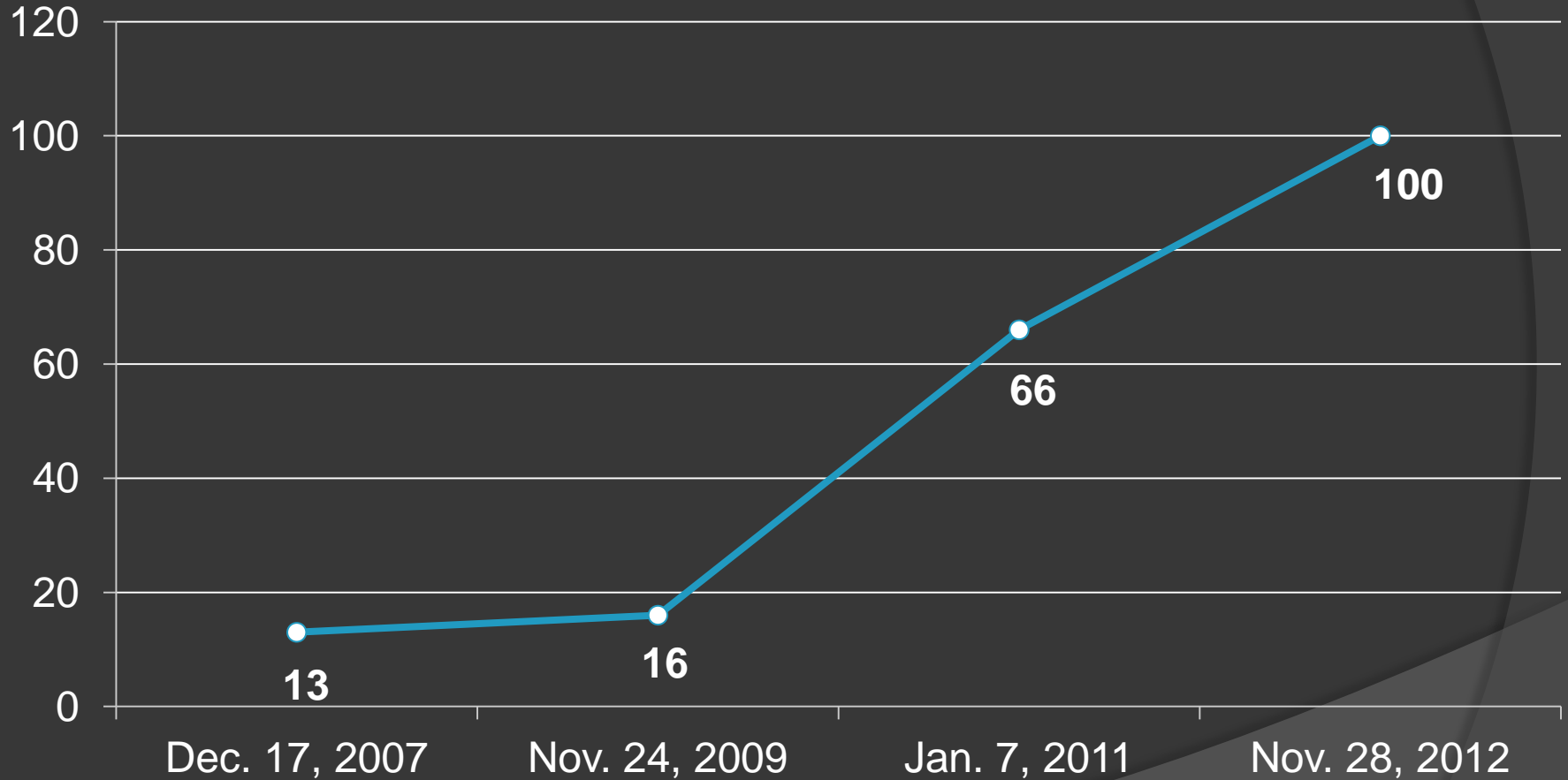
Tualatin-Sherwood Road at Martinazzi Ave.

Intersection-Related Crashes



Tualatin-Sherwood Road at Martinazzi Ave.

Survey Results – Red Light Detections



Layers

Create the "Halo-Effect"



Tualatin, Oregon 97062



Considerations:

- **Five Year Contract Ends July 2013**
- **Can Extend up to Seven (7) One-Year Extensions**
- **Need to Renegotiate Contract with Vendor**
- **Seek Approval from Washington County**
- **Permit Process**
- **Installation**

Question For Council:

Should we Pursue the installation
of a 3rd Intersection System?

City Council Work Session

Meeting Date: 02/11/2013

Towing From Private Property

Attachments

Power Point as PDF

Tow Ordinance Feb 2013 Draft



City Council

Tow from Private Property

February 11, 2013





Overview

- Types of Tows
- Private Property Tows in Tualatin
- Notification to Police About Tows
- Areas We Can Regulate
- Current Ordinance Language
- Additional Options for Ordinance
- Comments From Businesses





Types of Tows

- Police Tows

- Blocking street
- DUII

- Contract/Consensual Tows

- Owner wants vehicle towed

- Private Property/Nonconsensual Tows

- Parking in Private Parking Lot





Private Property Tows in Tualatin

- 107 Private Property Tows Reported to Police in 2012
- 14 Different Tow Companies
 - Majority performed by four companies





Notice To Police

● Police Tows

- Washington County Rules

● Private Property Tows

- Not legally required - HOWEVER
- State Law requires notice to police within 1 hour of tow in order for tow company to retain possession of the vehicle until charges paid.





Areas We Can Regulate

- Two Areas Local Governments Can Regulate:

- Price of Private Property/Nonconsensual Tows; and
- Safety





Ordinance Provisions

- Posting of Signs
- Register with City
- Towing Activities
 - ✓ Safely
 - ✓ Legible receipt with fees and charges
 - ✓ Offer to call transportation
 - ✓ Staff available
 - ✓ Accept photo ID proof of ownership
 - ✓ Accept cash or credit card as payment
 - ✓ Notify police of vehicle location within one hour of tow
 - ✓ Exercise care if animal found





Differences in Current and Prior Draft

- Administrative Authority
- Definitions
- Eliminated Font and Size Requirements for Signs





Additional Options for Ordinance

- Distance of Tows
 - City of Portland
 - Within City Limits
 - San Francisco
 - Must be stored within 10 miles of where removed
- Price
 - City of Portland
 - Fees Approximately 20% Less





Comments From Businesses

• Signs

- Type, size, etc.
- What happens to those already in place

• Multiple Regulations

- Different Regulations Between Jurisdictions
 - Tow Companies
 - Business Establishments



ORDINANCE NO. _____

AN ORDINANCE RELATING TO TOWING FROM PRIVATE PROPERTY; AND
ADDING CHAPTER 8-5 TO THE TUALATIN MUNICIPAL CODE

WHEREAS the towing of vehicles from private property implicates the safety and welfare of the general public;

WHEREAS the City of Tualatin has a significant governmental interest in protecting the health, safety, and welfare of the general public and preserving the public order; and

WHEREAS the City Council desires to minimize and control the harmful and adverse affects that occur during the towing of motor vehicles from private property.

THE CITY OF TUALATIN ORDAINS AS FOLLOWS:

Section 1. Chapter 8-5 is added to the Tualatin Municipal Code to read as follows:

8-5-005 Purpose. The purpose of this chapter is to ensure that towing vehicles from private property facilities is performed safely; require private parking facilities to provide adequate notice of prohibited parking areas; and to ensure that those whose vehicles have been towed can gain knowledge of their vehicle's location. The provisions of this Chapter shall be construed in conformity with the laws and regulations of the State of Oregon regarding towing from private property. Nothing in this section creates or is intended to create a special relationship, as that term is defined under Oregon law, between any person and the City.

8-5-010 Administrative Authority. The City Manager, or the City Manager's designee, is authorized to prescribe administrative rules and policies to implement the requirements of this chapter.

8-5-020 Definitions.

(1) "Private parking facility" means any property used for motor vehicle parking at which the property owner or manager restricts or reserves parking.

(2) "Private parking facility owner" means the owner, operator, lessee, manager, or designated agent of a private parking facility.

(3) "Tow" means to haul, carry, pull along, or otherwise transport or remove a motor vehicle by means of another vehicle.

(4) "Tow company" means any person, firm, corporation, or other entity that engages in, or owns or operates a business which engages in, the towing or removal of motor vehicles for compensation.

(5) "Vehicle owner" means the person registered with the Department of Motor Vehicles as the owner of the vehicle, or a person in lawful possession of the vehicle.

8-5-030 Towing Vehicles from Private Parking Facilities. No tow company may, without the vehicle owner's consent, tow, cause to be towed, or store a motor vehicle towed from a private parking facility unless:

(1) The tow company has express written authorization from the private parking facility owner to tow vehicles from the private parking facility;

(2) The private parking facility contains at least one sign at each entryway that prominently displays the following information:

(a) A statement that parking is prohibited, reserved, or otherwise restricted;

(b) A statement of the hours the prohibition, reservation, or restriction applies;

(c) The name of the tow company or companies that patrols the private parking facility; and

(d) A 24-hour telephone number of the tow company or companies to call to obtain release of a vehicle towed.

(3) If a private parking facility serves multiple businesses and restricts or reserves parking spaces for each business, each parking space must be clearly marked to indicate which spaces are restricted or reserved for each business;

(4) The tow company photographs the vehicle to be towed and signs posted prior to hookup; and

(5) The tow company complies with all requirements of this chapter and all administrative rules and policies.

8-5-040 Registration of Tow Companies. No tow company shall tow or store vehicles towed from private parking facilities within the City of Tualatin until the tow company provides the City of Tualatin with the following information:

(1) The tow company's legal business name, address, telephone number and fax number;

- (2) A list of all tow trucks used for tows from private property;
- (3) Addresses of all storage facilities utilized by the tow company to store vehicles towed from within the City of Tualatin;
- (4) A 24-hour contact telephone number;
- (5) The names of all owners; and
- (6) Other information the City Manager determines is necessary to carry out the requirements of this Chapter.

8-5-050 Tow Requirements. Tow companies must comply with the following requirements:

- (1) Perform tows in a safe and reasonable manner and not damage any person or property while towing or storing vehicles;
- (2) Fully cooperate with any police agency to facilitate processing of stolen vehicles;
- (3) Provide to the person seeking release of a towed vehicle a clearly legible receipt, complete with all required information and with all fees and charges itemized;
- (4) Be considered to be in possession of a vehicle when the hookup is complete and the tow truck has begun towing the vehicle by engaging the tow truck's transmission and moving forward;
- (5) Offer to call for or provide transportation to the vehicle owner/operator from within the immediate vicinity of the tow scene to the location of the towed vehicle storage;
- (6) Have staff available at all times to provide information about the location of the towed vehicle and the information for obtaining a release of the towed vehicle;
- (7) Accept as proof of ownership vehicle title or registration, in addition to, valid photo-identification of the person seeking the release;
- (8) Accept at least cash or valid credit card for payment for any fees or charges assessed;
- (9) Notify the City of Tualatin Police of the location of any towed vehicle within one hour of the vehicle being placed in storage; and.
- (10) Exercise reasonable care of any animal found to be in a towed vehicle.

8-5-060 Violation is Civil Infraction. A tow company that violates or refuses to comply with this chapter commits a civil infraction and shall be subject to a fine of up to \$500. Each violation, and each day that a violation continues, constitutes a separate civil infraction.

Section 2. Severability. If any part of this ordinance is held invalid by a court of competent jurisdiction the remainder of this ordinance shall remain in full force and effect.

INTRODUCED AND ADOPTED this 11th Day of Month, 2013.

CITY OF TUALATIN, OREGON

BY _____
Mayor

ATTEST:

BY _____
City Recorder

APPROVED AS TO LEGAL FORM

BY _____
City Attorney

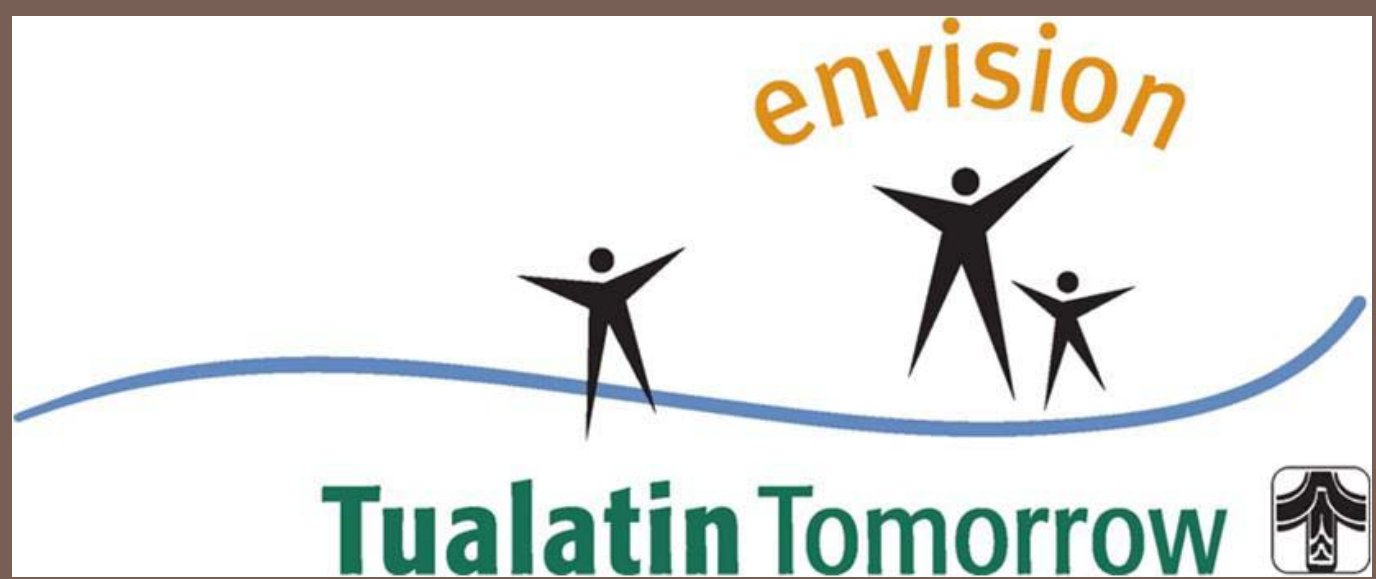
City Council Work Session

Meeting Date: 02/11/2013

Tualatin Tomorrow Presentation

Attachments

Tualatin Tomorrow Presentation



TUALATIN TOMORROW VISION AND STRATEGIC ACTION PLAN UPDATE

City Council Work Session – February 11, 2013

Overview

- About Tualatin Tomorrow
- Goals, Objectives, and Public Involvement
- Project Update
- Proposed Project Timeline
- Next Steps

About Tualatin Tomorrow

- A Vision for the Community
 - ▣ Visioning: Is a structured public process to guide a community in looking at itself and what it wants to be in the future.

About Tualatin Tomorrow

- This project:
 - ▣ Identified community issues
 - ▣ Analyzed emerging trends
 - ▣ Articulated Tualatin's core community values
 - ▣ Created a vision statement
 - ▣ Developed strategic action items

Tualatin Tomorrow Advisory Committee & Partners

- Support the mission of Tualatin Tomorrow
- Promote community involvement in implementing the Vision and Strategic Action Plan
- Collaborate as community partners
- Provide forums to exchange information and create community connections
- Coordinate with other City groups and Advisory Committees
- Oversee the process of updating the Vision

Vision Plan Update

- The plan was first adopted in June 2007, and we are working on the update!
- At the October 2012 Partner meeting we worked on developing Goals and Objectives for the project.
- Outreach efforts to the City's Advisory Committees are currently in progress to collect their input on the Public Involvement Strategy.

Vision Plan Update Goals

- Ensure the Vision Plan is living and dynamic
- Reflect the progress on the Vision
- Amend the plan to reflect current community needs and aspirations
- Develop a comprehensive public involvement strategy to update the plan

Public Involvement Strategy:

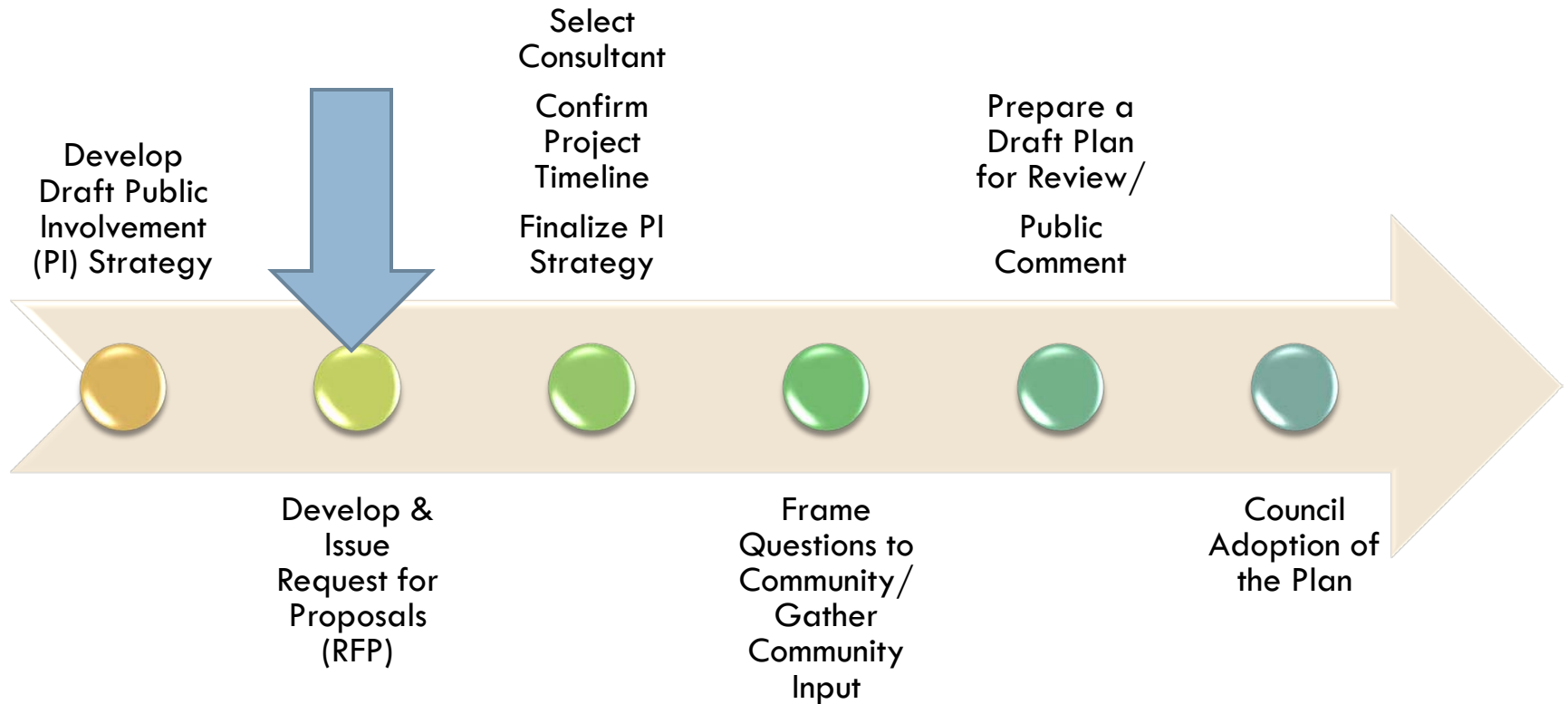
Stakeholders List

- Tualatin Tomorrow Advisory Committee
- City Council
- City Advisory Boards and Committees
 - Tualatin Arts Advisory Committee
 - Tualatin Parks Advisory Committee
 - Tualatin Planning Commission
 - Core Area Parking District Board
 - Tualatin Library Advisory Committee
 - Tualatin Youth Advisory Council
 - Tualatin Library Foundation
 - Friends of the Tualatin Library
 - Juanita Pohl Center & Steering Committee
- Tigard-Tualatin Aquatic District
- Citizen Involvement Organizations
- Chamber of Commerce
- Clackamas County
- Washington County
- Clean Water Services
- Community Action Network
- Tigard Tualatin School District & Other Community Schools
- Legacy Meridian Park Medical Center
- Providence Health Services
- Kaiser Permanente
- TriMet
- Lumiere Players
- Mask & Mirror Theatre Co.
- The Wetlands Conservancy
- TTSD Resource Center
- Tualatin Farmers Market
- NW Natural
- PGE
- Tualatin Valley Fire & Rescue
- Tualatin Riverkeepers
- WorkSource Oregon
- Vision Action Network
- Tualatin Historical Society
- Love, Inc.
- Westside Economic Alliance
- Tualatin Rotary
- Winona Grange
- Portland Community College
- Tualatin Police Department
- City of Tualatin Library
- Metro
- ODOT
- Tualatin School House Pantry
- Community Warehouse
- Faith-based communities
- Hispanic/Latino Groups
- Washington County BTC
- Westside Transportation Alliance
- Youth Organizations- Sports/Scouts
- Meals on Wheels People
- Lions
- Kiwanis
- VFW

Public Involvement Strategy: How to Engage

- Print newsletters
- Electronic newsletters
- Social Media
- Online forums
- Community Meetings/Open Houses
- Neighborhood Meetings
- City Advisory Committee Meetings
- City Website
- Utilize the Tualatin
- Tomorrow Partners
- Using entertainment to get the message out
- Flash Mob
- Community Events (Crawfish, Pumpkin Regatta, etc.)
- Word of Mouth
- Personal Interaction/Word of Mouth
- PTAs/PSOs
- Local Businesses
- High School Sporting Events
- Chamber Network-E-blasts
- Signs
- Hispanic Radio Contact
- School Newsletters
- Student Government Organizations (ASB)
- Contest for the CIOs to get them engaged

Project Update



Proposed Project Timeline

	Date
Presentation to City Council	February 11, 2013
RFP out to Consultants	March 1, 2013
Consultant Selection	Mid-March/April 2013
Community Input/Development of Plan	Mid-May to August 2013
Plan Adoption	September 2013

Next Steps

- Draft the Request for Proposals
- Consultant Selection – April 2013
- Continue Community Outreach – TPAC February Meeting, Spring Partner Meeting



MEMORANDUM

CITY OF TUALATIN

TO: Honorable Mayor and Members of the City Council

FROM: Nicole Morris, Deputy City Recorder

DATE: 02/11/2013

SUBJECT: **6:40 p.m. (5 min) – Community Survey.** The City of Tualatin conducts a Community Survey every three years to determine resident opinions about the community and services provided by the City. The City will once again partner with The National Citizen Survey who will conduct a statistically valid survey which can be benchmarked against survey information from previous years and with survey information from communities of a similar size throughout the country. Tonight's discussion will provide the Council with an update on the timeline for the survey and a brief overview of the methodology and community outreach plan.

Attachments:



MEMORANDUM

CITY OF TUALATIN

TO: Honorable Mayor and Members of the City Council

FROM: Nicole Morris, Deputy City Recorder

DATE: 02/11/2013

SUBJECT: **6:45 p.m. (10 min) – Council Meeting Agenda Review, Communications & Roundtable:** This is the opportunity for the Council to review the agenda for the February 11th City Council meeting and take the opportunity to brief the rest of the Council on any issues of mutual interest.

Attachments: