
City of Tualatin | City Council Members



**Mayor
Frank Bubenik**



**Councilor - Position 1
Maria Reyes**



**Councilor - Position 2
Christen Sacco**



**Councilor - Position 3
Bridget Brooks**



**Councilor - Position 4
Cyndy Hillier**



**Councilor - Position 5
Octavio Gonzalez**



**Council President
Valerie Pratt**

WELCOME TO TUALATIN!

The City of Tualatin takes pride in being known as a warm and welcoming community for new businesses, retail shoppers, and residents alike. The community values a high QUALITY OF LIFE and promotes LOCAL PRIDE and a sense of OWNERSHIP, INVOLVEMENT, and BELONGING.

LOCATION

Tualatin is a southern suburb of Portland, Oregon. It is located along Interstate-5 between Interstate-205, Highway 99W, and Highway 217. In addition, the Westside Express Service (WES) commuter rail provides Tualatin residents and visitors access to the greater Portland Metropolitan region. Collectively, these major transportation facilities provide accessible, affordable, and easy movement of goods and people to, from, and within the region.



DISTANCE FROM TUALATIN	
Destination	Miles
Cities	
Portland, OR	13
Salem, OR	35
Eugene, OR	100
Seattle, WA	185
Boise, ID	440
San Francisco, CA	625
Airports, Rail Stations, Shipyards	
Portland International Airport	24
Aurora State Airport	10
Hillsboro Airport	21
Portland Union Station	14
Portland Shipyards	17
Recreational Areas	
Oregon Coast	85
Mt. Hood Ski Areas	65
Public Universities	
Oregon Institute of Technology (Metro)	8
Portland State	12
Oregon State University	75
University of Oregon	100

DEMOGRAPHICS

Throughout the last 20 years, the City of Tualatin has been one of the fastest growing cities in Oregon. Unlike many other sprawling regions, Tualatin continues to maintain a high standard of living, yet remains an affordable place to locate a family. Tualatin is also part of a large educated and skilled regional workshed.

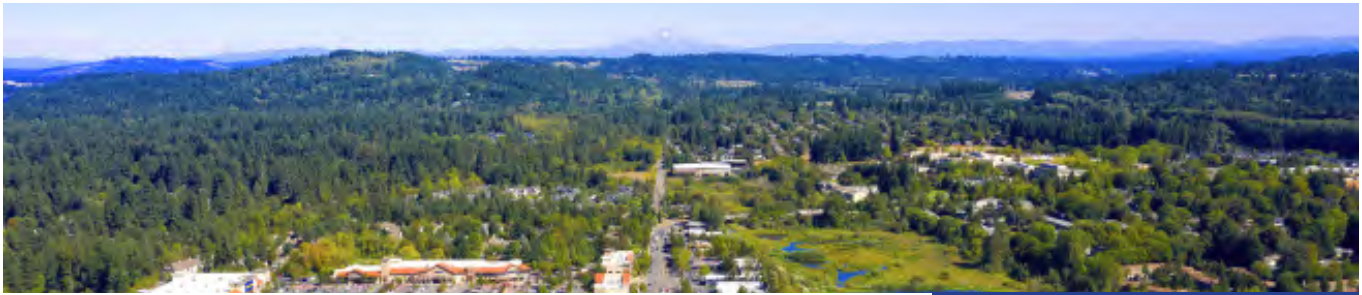
LOCAL ATTRIBUTES 2021

- Median Age: **37.0**
- Hispanic or Latino: **21.5%**
- Median Household Income: **\$97,931**
- High School Graduate or Higher: **94.2%**
- Bachelor's Degree or Higher: **45.3%**

REGIONAL WORKFORCE ATTRIBUTES 2020

- Bachelor degree and higher: **42.2%**
- K-12 graduation rate: **93.1%**
- Regional workforce: **1.3 Million**
- Median household income: **\$83,943**
- Largest Employer: **Intel**

POPULATION GROWTH			
	2021 Population	2010 Population	% Growth
City of Tualatin	27,537	26,054	6%
Portland Region	2,510,696	2,453,168	2%
State of Oregon	4,256,301	3,831,074	11%



TUALATIN'S ECONOMY

The City of Tualatin recognizes that a fundamental element to the overall quality of life is the health of the local economy. Businesses provide jobs, a strong tax base to support high quality services, and inject wealth into the community. Furthermore, businesses contribute significantly to local charities and sponsor community events. As a result of long-range planning and thoughtful policy-making, Tualatin is evenly split between residential land and commercial/industrial land. Tualatin is home to a vibrant destination retail lifestyle center and state of the art manufacturing and wholesale trade companies.

KEY INDUSTRY CLUSTERS

There are five key industry clusters in Tualatin that provide the majority of employment opportunities and contribute significantly to the local economy. Combined, these clusters represent 47% of local employment and a direct impact of over \$1.8 billion in annual output. Taken together, the average income among jobs in these clusters is \$75,000 compared to a total average of \$58,000.

TUALATIN CLUSTERS



Transportation & Logistics

Employment: 3,486
Percent Employment: 11%
Ave. Wage: \$63,000



Advanced Manufacturing

Employment: 3,940
Percent Employment: 13%
Ave. Wage: \$60,000



Corporate & Financial

Direct Jobs: 1,502
Percent Employment: 5%
Ave. Wage: \$84,000



Software & Technology

Direct Jobs: 3,991
Percent Employment: 13%
Ave. Wage: \$111,000



Health & Wellness

Direct Jobs: 3,676
Percent Employment: 12%
Ave. Wage: \$66,000

BY THE NUMBERS

BUSINESS & EMPLOYEES

1,799

Number of OED Businesses

30,491

Number of Employees in Tualatin

\$2 BILLION

Total Payroll in Tualatin

2.6%

Local Unemployment Rate

Lam Research

Largest Employer

BUILDING INVENTORY

12.2 MILLION

Total sq.ft Industrial Space

1.3 MILLION

Total sq.ft office space

INDUSTRY CLUSTERS

54%

Local jobs in key industry clusters

\$76,000

Average wage among industry clusters

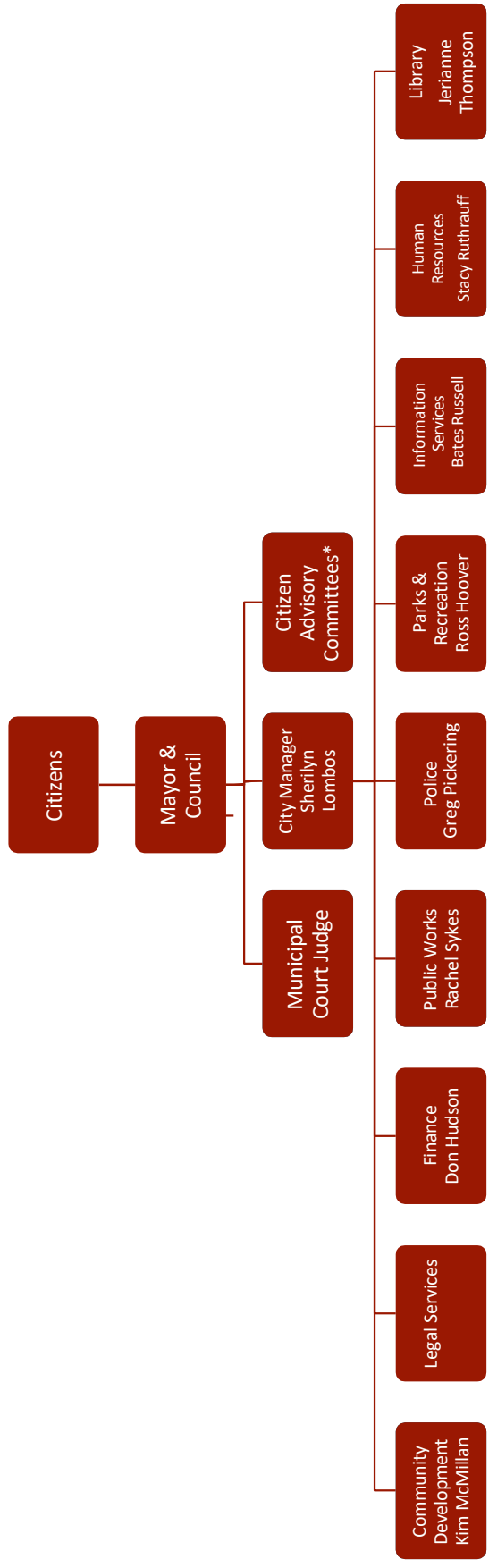
\$66,000

Average wage in Tualatin among all industries

US CENSUS 2021



City of Tualatin Organization



* The Citizen Advisory Committees include the Tualatin Library Advisory Committee, the Tualatin Park Advisory Committee, the Tualatin Arts Advisory Committee, the Tualatin Planning Commission, the Core Area Parking District Board, the Architectural Review Board, and the Budget Advisory Committee