



City of Tualatin

Preliminary Evaluation Results

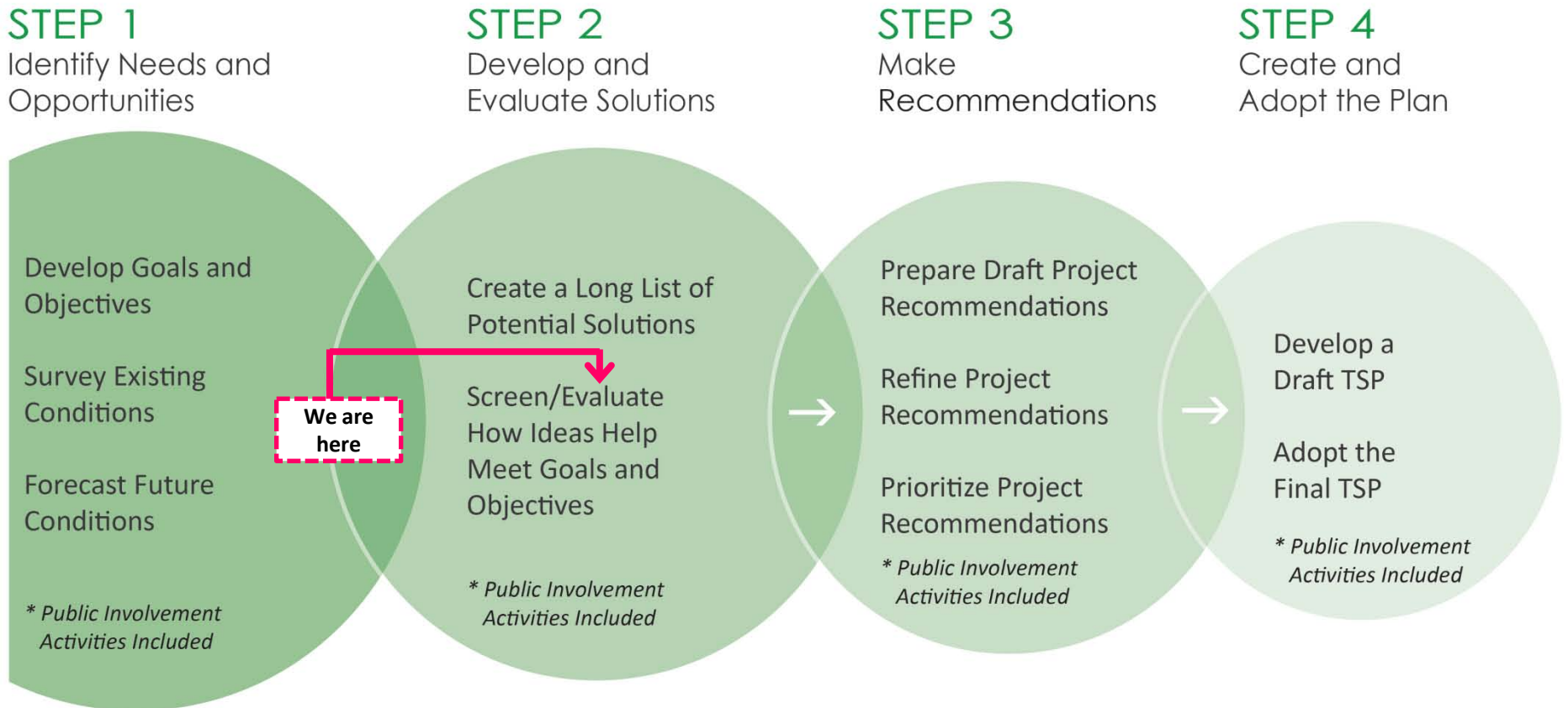
Tualatin TSP

Presentation to
Tualatin Transportation Task Force
May 24, 2012

Presentation Outline

- Overview of the Evaluation Process
- Highlights by Working Group Topic Area
 - Bicycle and Pedestrian
 - Downtown
 - Industrial and Freight
 - Major Corridors and Intersections
 - Neighborhood Livability
 - Transit
- Discussion
- Next Steps

Where We Are In the TSP Process



Progress Since our April 19th Meeting...

1. Discussed the project screening process with
 - ✓ City Council
 - ✓ Planning Commission
 - ✓ TPARK
2. Finalized our evaluation framework
3. Conducted a preliminary evaluation
4. Summarized the evaluation by criteria category

The Evaluation Process

- Reviews each feasible project idea against a set of evaluation criteria
- How well does the idea meet the goals and objectives of the TSP?

There are Seven Goal Categories

1. Access and Mobility
2. Safety
3. Vibrant Community
4. Economy
5. Health and the Environment
6. Equity
7. Ability to be Implemented

Our Evaluation Scale

Rating	Description
●	The idea addresses the criterion and/or makes substantial improvements in the criteria category
◐	The idea partially addresses the criterion and/or makes some improvements in the criteria category
○	The idea does not support the intent of and/or negatively impacts the criteria category
N/A	The criterion does not apply

How Will This Information Be Used?

- Preliminary review of evaluation results (tonight)
- Discussion of evaluation results (3rd round of working group meetings, early June)
- 3rd Round of Working Group meetings will also develop preliminary recommendations
 - What projects make sense, include in TSP?
 - What projects *don't* make sense, don't include in TSP?
 - What projects need additional analysis before we decide
- Preliminary recommendations discussion with Task Force (June 21st)
- Online open house on preliminary recommendations (July and August)

Areas for Additional Analysis

1. Tualatin-Sherwood Road Options
2. Nyberg Interchange Options
3. Boones Ferry Road Options
4. North to South Connectivity
5. Herman Road and Tualatin Road Options
6. Tualatin's Downtown Circulation



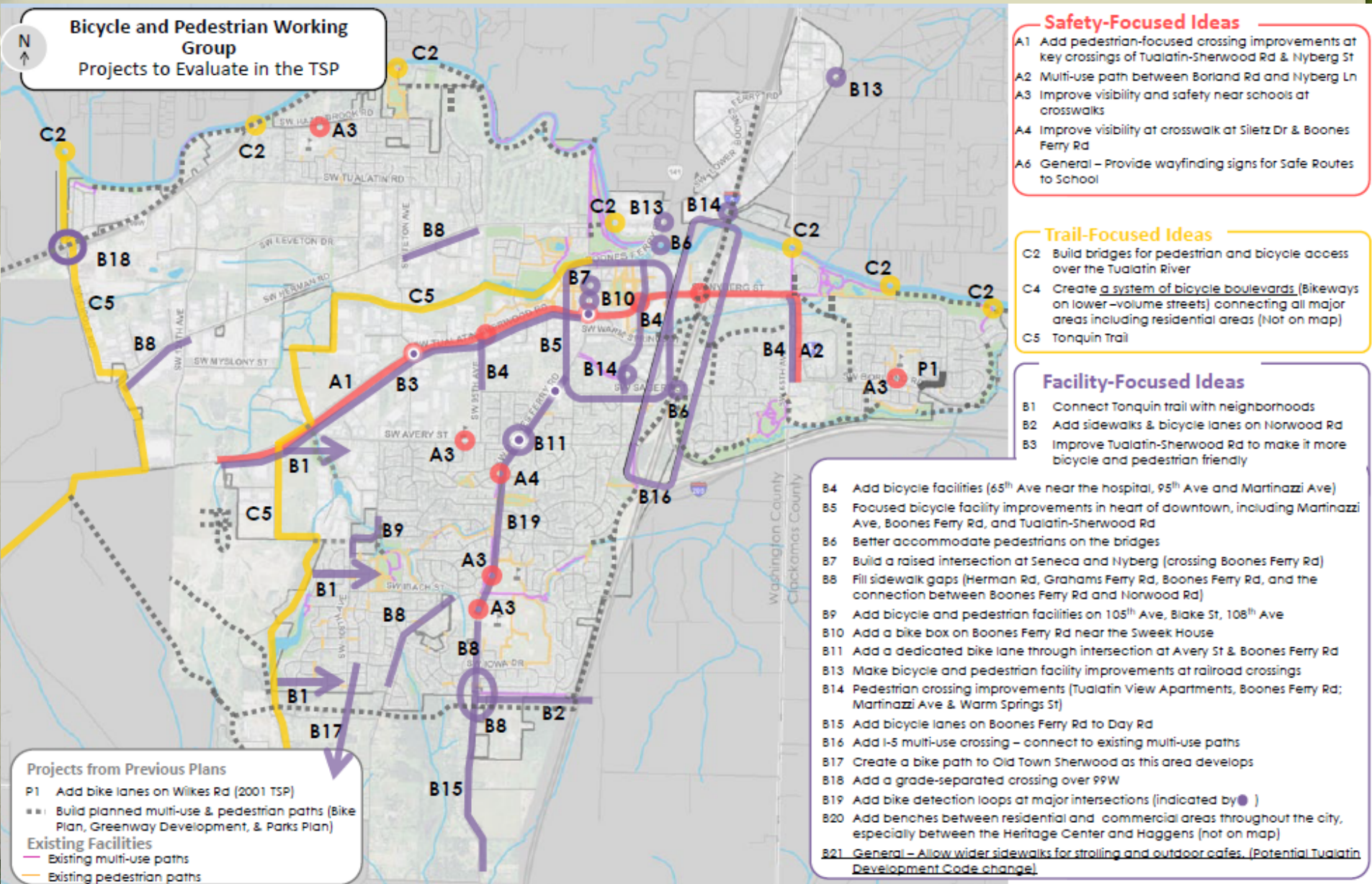
Evaluation Highlights

By Working Group
Topic Area



Bicycle/Pedestrian

Bicycle and Pedestrian





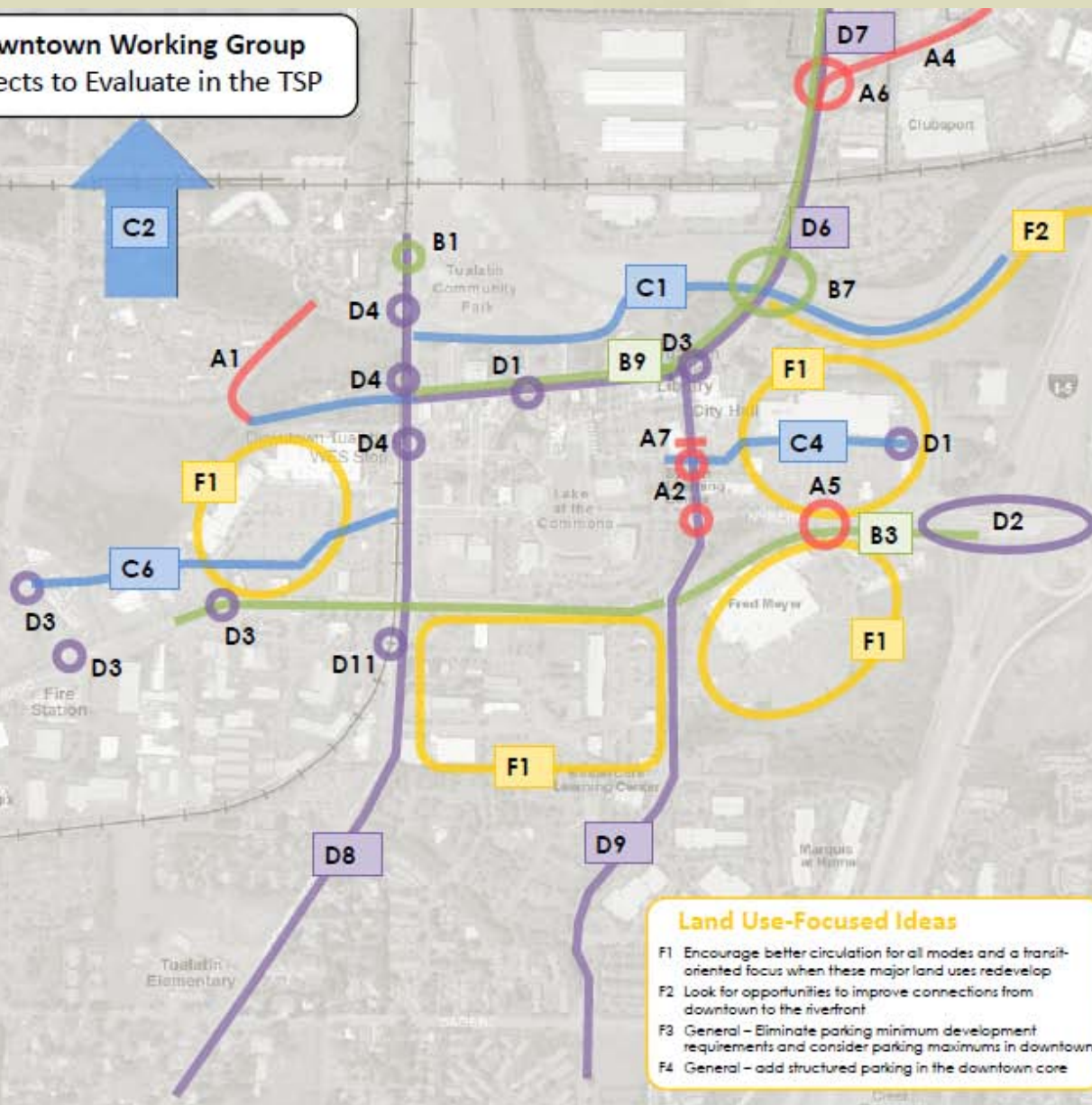
Downtown

Downtown



Downtown Working Group Projects to Evaluate in the TSP

C2



Safety-Focused Ideas

- A1 Upgrade bridge surface and improve illumination along path near Hedges Creek
- A2 Consider raised intersections for pedestrians at Seneca St and Nyberg St
- A4 Reduce speeds near Bridgeport Village
- A5 Redesign Fred Meyer & Kmart intersection – upgrade the pedestrian connection
- A6 Add a roundabout at Lower Boones Ferry Rd and Boones Ferry Rd
- A7 Add a pedestrian island on Martinazzi Ave north of Seneca St

Congestion-Focused Ideas

- B1 Improve circulation into and out of the park
- B3 Add an eastbound lane on Tualatin-Sherwood Rd from Martinazzi Ave to I-5
- B7 Replace/widen bridge on Boones Ferry Rd
- B9 Widen Boones Ferry Rd to 5 lanes
- B10 Widen Tualatin-Sherwood Rd through downtown

Connectivity-Focused Ideas

- C1 Build a trail from Boones Ferry Rd to the downtown core along the river to the Tualatin River Greenway
- C2 Look for ways to provide north-south connectivity over Tualatin River for vehicles
- C4 Create a grid system near the Kmart, connect to Seneca St
- C5 General-improve street connectivity in downtown
- C6 Create a public road between Boones Ferry Rd and SW 90th Ave

Bicycle/Pedestrian-Focused Ideas

- D1 Redesign pedestrian crossing, consider flashing lights
- D2 Upgrade Nyberg interchange to improve the crossing experience for bicyclists
- D3 Optimize intersections to reduce conflicts between cars and pedestrians (Tualatin-Sherwood Rd & Martinazzi Ave and Boones Ferry Rd)
- D4 Add pedestrian crossings along Boones Ferry Rd
- D6 Improve sidewalks and bicycle lanes Boones Ferry Rd
- D7 Improve bicycle and pedestrian facilities near Bridgeport Village
- D8 Provide signage and/or other visual cues to motorists to accommodate bicycles on Boones Ferry Rd
- D9 Add bicycle lane or "Share the Road" signs on Martinazzi Ave
- D10 General – coordinate traffic signal timing to accommodate pedestrians in downtown
- D11 Focused pedestrian crossing on Boones Ferry Road at Tonka

Land Use-Focused Ideas

- F1 Encourage better circulation for all modes and a transit-oriented focus when these major land uses redevelop
- F2 Look for opportunities to improve connections from downtown to the riverfront
- F3 General – Eliminate parking minimum development requirements and consider parking maximums in downtown
- F4 General – add structured parking in the downtown core



Industrial and Freight

Industrial and Freight

Existing Plans

- P1 Connect Mysloni and Avery Streets to Tualatin-Sherwood Rd (2001 TSP)
- P2 Widen McEwan Rd to 3-lanes for bikes and pedestrians (2001 TSP)
- P3 SW Tualatin Concept Plan roadways (2005)
- P4 Extend Pacific Drive to 124th (2001 TSP)
- Planned traffic signal (2001 TSP)

Industrial and Freight Working Group Projects to Evaluate in the TSP

Congestion-Focused Ideas

- A1 Add a signal or roundabout at Sagert St and Martinazzi Ave
- A2 Divert truck traffic from Tualatin Rd to Herman Rd
- A5 Extend 124th Ave and connect to I-5 south of Tualatin
- A6 Provide coordinated signal timing and access management along major arterials.
- A7 Remove northbound right turn light on Boones Ferry Rd
- A9 Improvements to help mobility of through-traffic (Tualatin-Sherwood Rd)
- A11 Improve turn radius at Avery St and Teton Ave, look at congestion
- A12 Synchronize turn signals to/from Boones Ferry Rd to Tualatin-Sherwood Rd; coordinate with the train signal
- A13 Widen Boones Ferry Rd through downtown

Transit-Focused Ideas

- B1 General - Add Saturday, Sunday, late evening transit shuttle
- B2 Add rail station with easy offload and access for industry
- B3 General - Provide local loop bus

Connectivity-Focused Ideas

- C3 Provide north-south vehicle connectivity over Tualatin River
- C4 Add a left turn from Teton Ave to Tualatin Rd
- C5 Extend 65th Ave north
- C6 Improve 115th Ave
- C7 Improve cross-section on Herman Rd
- C8 Add signal to Tualatin Rd and Boones Ferry Rd;
- C9 Consider removing trucks/adding truck info signs along 108th/105th Aves.
- C10 Extend 95th Ave north to Tualatin Rd
- C12 Create an east/west connection across I-5 (near Greenhill Rd)
- C13 General- Provide travel options by improving connectivity in the roadways system
- C14 Widen Mysloni St to standards - reduce on-street parking (AW Idea)*
- C15 Upgrade Cipole Rd to standards with sidewalks and bike lanes (AW Idea)
- C16 Improve Tonquin Rd between Oregon St and Waldo Way (AW Idea)
- C17 Improve circulation east of the Bridgeport/I-5 Interchange (AW Idea)

Other Ideas

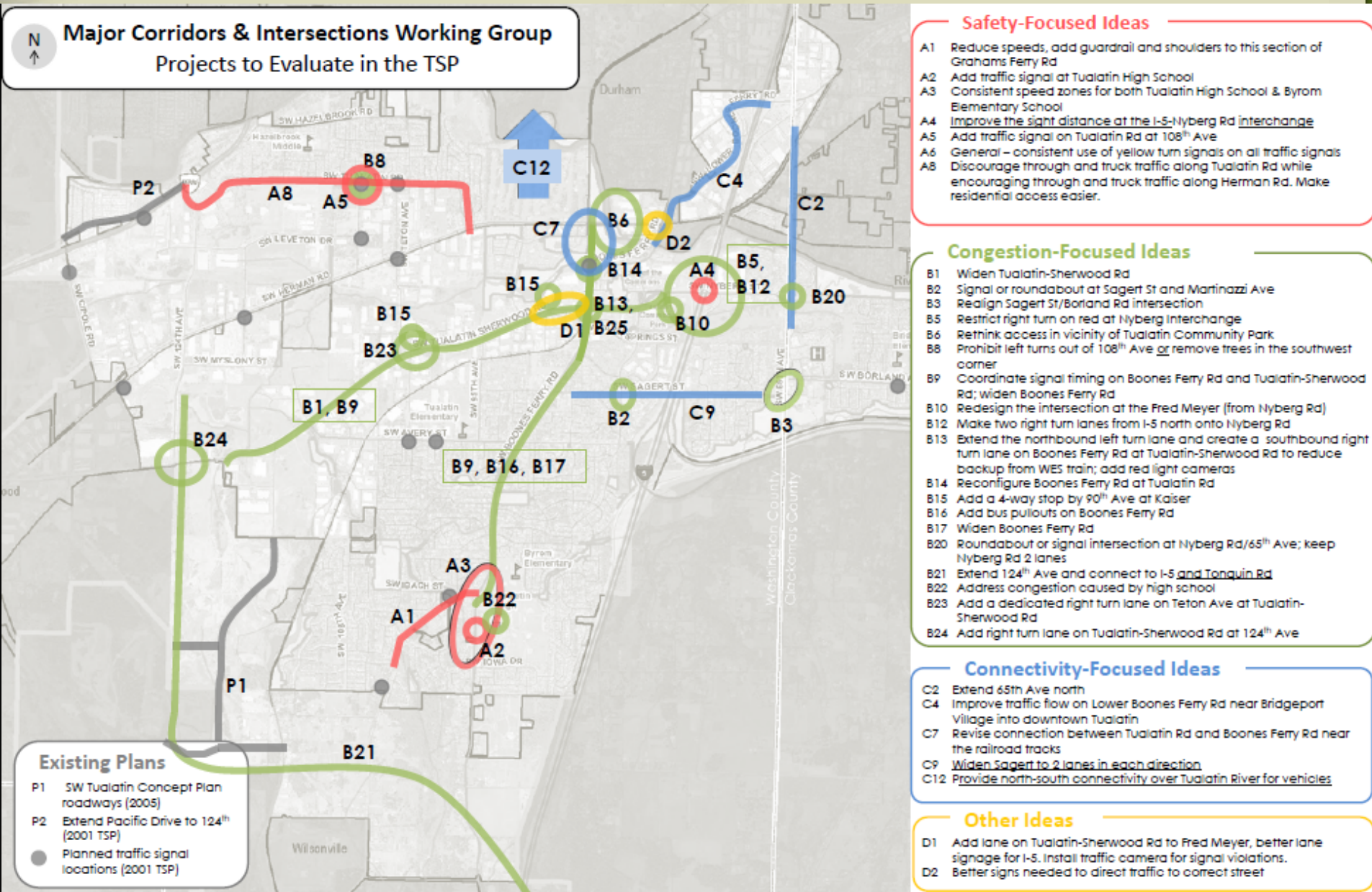
- D1 General - Coordinate freight receiving/shipping times
- D2 Add vision & sound walls; reduce cut-through traffic
- D3 General - Provide incentives to telecommute
- D5 Add a lane on Tualatin-Sherwood Rd to Fred Meyer, better I-5 lane signage. Add traffic camera for red light violations.
- D6 Improve signs to direct traffic to correct street
- D7 Add traffic signal at 97th Ave and Tualatin-Sherwood Rd
- D8 Improve visibility, restrict left turns, add signal on from 108th Ave onto Tualatin Rd
- D9 Add a signal at Tualatin Rd and Teton Ave/Jurgens Rd
- D10 Improve Tualatin-Sherwood Rd/Martinazzi Ave signal timing/add a red light camera
- D11 Encourage off-peak usage on Herman Rd and Tualatin-Sherwood Rd
- D12 General - Make "Truck Route" signs larger
- D13 Add traffic calming on Tualatin Rd
- D14 General - Add measures to reduce truck traffic on local and minor streets - including traffic calming
- D15 Improve turning radius from Herman Rd northbound onto 108th Ave (AW Idea)
- D16 Increase speed limit to 40 or 45 MPH on 124th Ave (AW Idea)
- D17 Reconfigure the intersection of 115th Ave and Tualatin-Sherwood Rd (AW Idea)
- D18 Improve turning radius from Tualatin-Sherwood Rd to Cipole Rd (AW Idea)
- D19 Improve northbound right and left turns onto Herman Rd (AW Idea)
- D20 Improve southbound left turns at 63rd Ave and Lower Boones Ferry Rd (AW Idea)
- D21 Improve southbound left turns from Jurgens and 106th Aves onto Tualatin Rd (AW Idea)
- D22 Improve 65th Ave south across I-205; widen and address dip in the roadway (AW Idea)
- D23 General - ensure that future roundabout designs can accommodate larger trucks (AW Idea)

* (AW Idea) indicates that this project was suggested through conversations with Allied Waste drivers



Major Corridors and Intersections

Major Corridors and Intersections





Neighborhood Livability

Neighborhood Livability



Neighborhood Livability Working Group
Projects to Evaluate in the TSP

Safety-Focused Ideas

- A1 Discourage/restrict through & truck traffic along Tualatin Rd while encouraging a shift to Herman Rd & Leveton Rd. Make residential access along Tualatin Rd easier.
- A3 Reroute school buses away from Tualatin Community Park and two railroad crossings
- A4 Add a roundabout at Boones Ferry Rd & Norwood Rd
- A5 Make Boones Ferry Rd more pedestrian-friendly, including the creation of one consistent speed limit, without widening
- A6 Improve intersection at 108th Ave and Tualatin Rd
- A8 Reduce speed, possibly add trail through wooded area.
- A9 Eliminate free right turns

Congestion-Focused Ideas

- B1 Add a signal or roundabout at Sagert St and Martinazzi Ave
- B2 Add a dedicated right turn lane into apartments near Nyberg Woods Shopping Center
- B3 Realign Sagert St and Borland Rd intersection (roundabout or signal)
- B4 Improve intersection at Avery St and Teton Ave
- B5 Address congestion caused by high school
- B6 Adjust signal timing to reflect traffic needs
- B8 Add right turn lane from Tualatin-Sherwood Rd to northbound 124th Ave

Connectivity-Focused Ideas

- C1 Connect 124th Ave to Tonquin Rd
- C2 Consider removing trucks/adding truck info signs along 108th/105th Aves.
- C3 Balance the needs of neighborhood with local truck movement along Avery St; provide turn lane for traffic entering into school
- C6 Create a street between Boones Ferry Rd and Bridgeport Rd
- C7 Extend 65th Avenue to the north

Bicycle/Pedestrian-Focused Ideas

- D2 Consider pedestrian islands on Boones Ferry Rd, near Byrom Elementary and Tualatin High schools
- D3 Provide a multi-use path along the river
- D4 Connect sidewalk on east side of 65th Ave
- D5 Repair gap in sidewalk on the south side of Borland Rd
- D6 Add multi-use path as part of Tualatin Trail
- D7 Provide focused pedestrian crossing improvements (may need signal)
- D8 Add bike facilities & continuous sidewalks
- D9 Build the Tonquin Trail
- D10 Provide neighborhood connections to Tonquin Trail
- D11 Connect to Tualatin Path
- D12 General - add benches for walkers throughout the city
- D13 Create a system of bicycle boulevards (bikeways on lower-volume streets) connecting all major areas including residential areas (Not on map)

Transit-Focused Ideas

- E1 Provide transit serving local resident needs in north Tualatin, between 99W and downtown Tualatin

Other Ideas

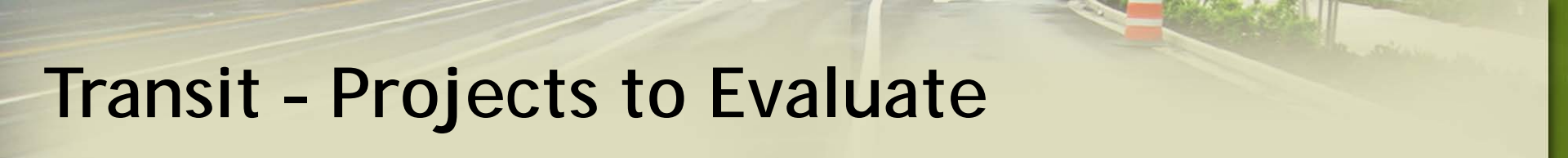
- F2 Remove northbound right turn light on Tualatin Rd out of the Police Station

Existing Plans

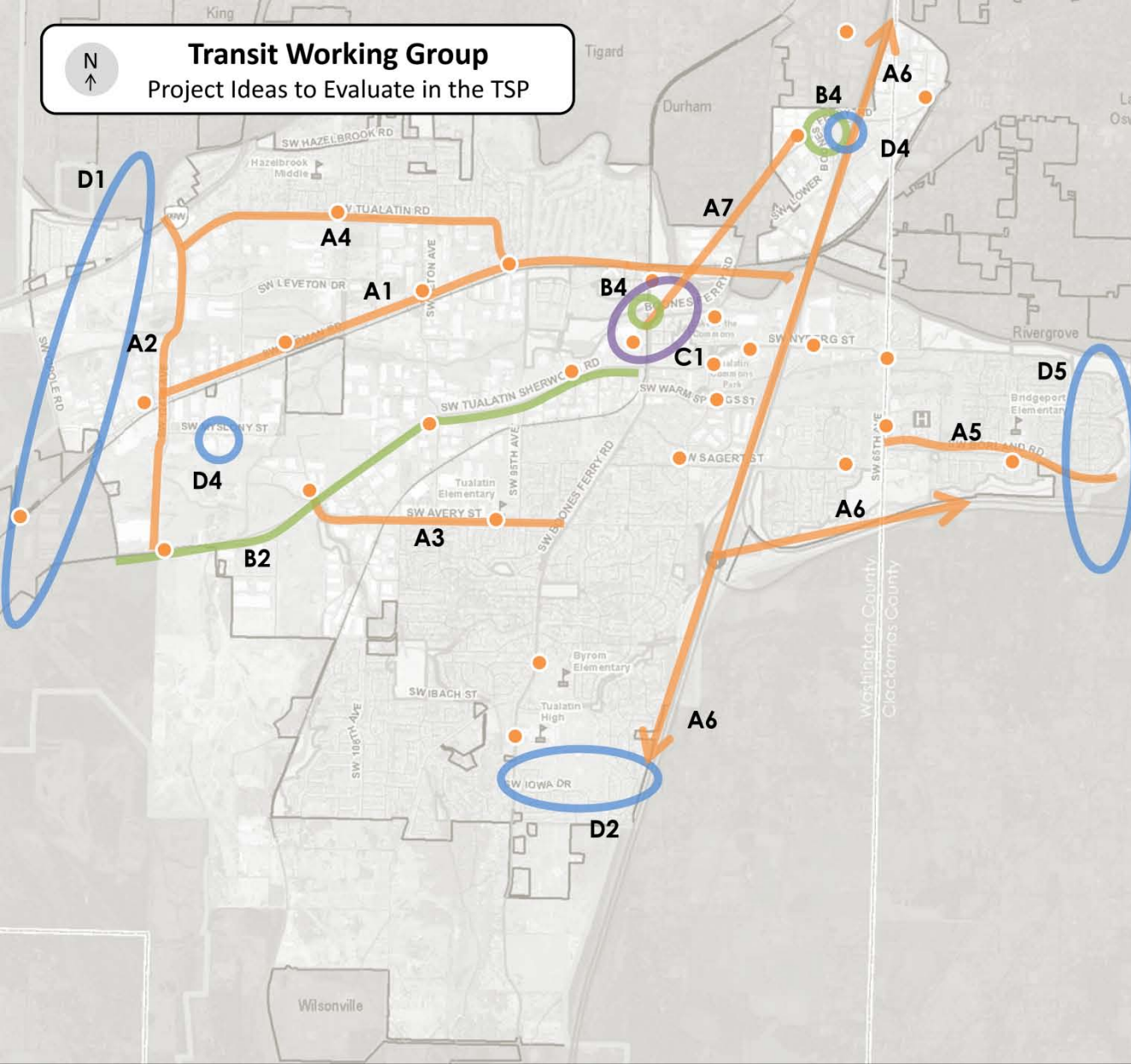
- P1 Extend Boones Ferry Rd to Hall (from the 2001 TSP)
- P2 SW Tualatin Concept Plan roadways (2005)



Transit



Transit - Projects to Evaluate



Bus Service-Focused Ideas

- A1 Provide bus transit service on Herman Road
 - A2 Provide bus transit service on 124th Street
 - A3 Provide bus transit service on Avery Street
 - A4 Provide bus transit service on Tualatin Road between downtown and 99W
 - A5 Extend bus service to east Tualatin
 - A6 Improve bus service between Tualatin and Salem
 - A7 Provide a shuttle or trolley service between Bridgeport Village and Commons area, especially for weekend service
 - A8 Provide a loop bus route around the city*
 - A10 Expand existing on-call shuttle and charge fares*
 - A12 General – need extended service hours for all transit*
 - A13 General – use more energy efficient buses*
 - A14 Coordinate bus schedules with WES schedule*
 - A16 Add stops on higher-volume routes*
-  Potential bus stop locations connecting major employers and activity centers

*not shown on map

Rail Service-Focused Ideas

- B2 Provide rail or high capacity bus transit service on Tualatin-Sherwood Road (towards Sherwood)
- B4 Build elevated pedestrian bridge to connect park-and-ride with shopping at Bridgeport Village
- B10 General – Add more spaces for bicycles on WES trains*

- **Land Use-Focused Ideas**

- C1 Make the WES station a central focus of downtown and the main transit center. Improve pedestrian connectivity, transit-oriented development opportunities, and local transit connections

• Park-and-Ride-Focused Ideas

- D1 Look for potential park-and-ride locations in west Tualatin
- D2 Look for potential park-and-ride locations in south Tualatin
- D3 Add parking capacity at Tualatin Park-and-Ride (near Bridgeport Village)
- D4 Look for opportunities to reduce size of or relinquish underutilized park-and-ride lots
- D5 Add a park-and-ride location in east Tualatin

In Summary

- Preliminary review of evaluation results (tonight)
- Discussion of evaluation results (3rd round of working group meetings, early June)
- 3rd Round of Working Group meetings will also develop preliminary recommendations
 - What projects make sense, include in TSP?
 - What projects *don't* make sense, don't include in TSP?
 - What projects need additional analysis before we decide
- Preliminary recommendations discussion with Task Force (June 21st)
- Online open house on preliminary recommendations (July and August)

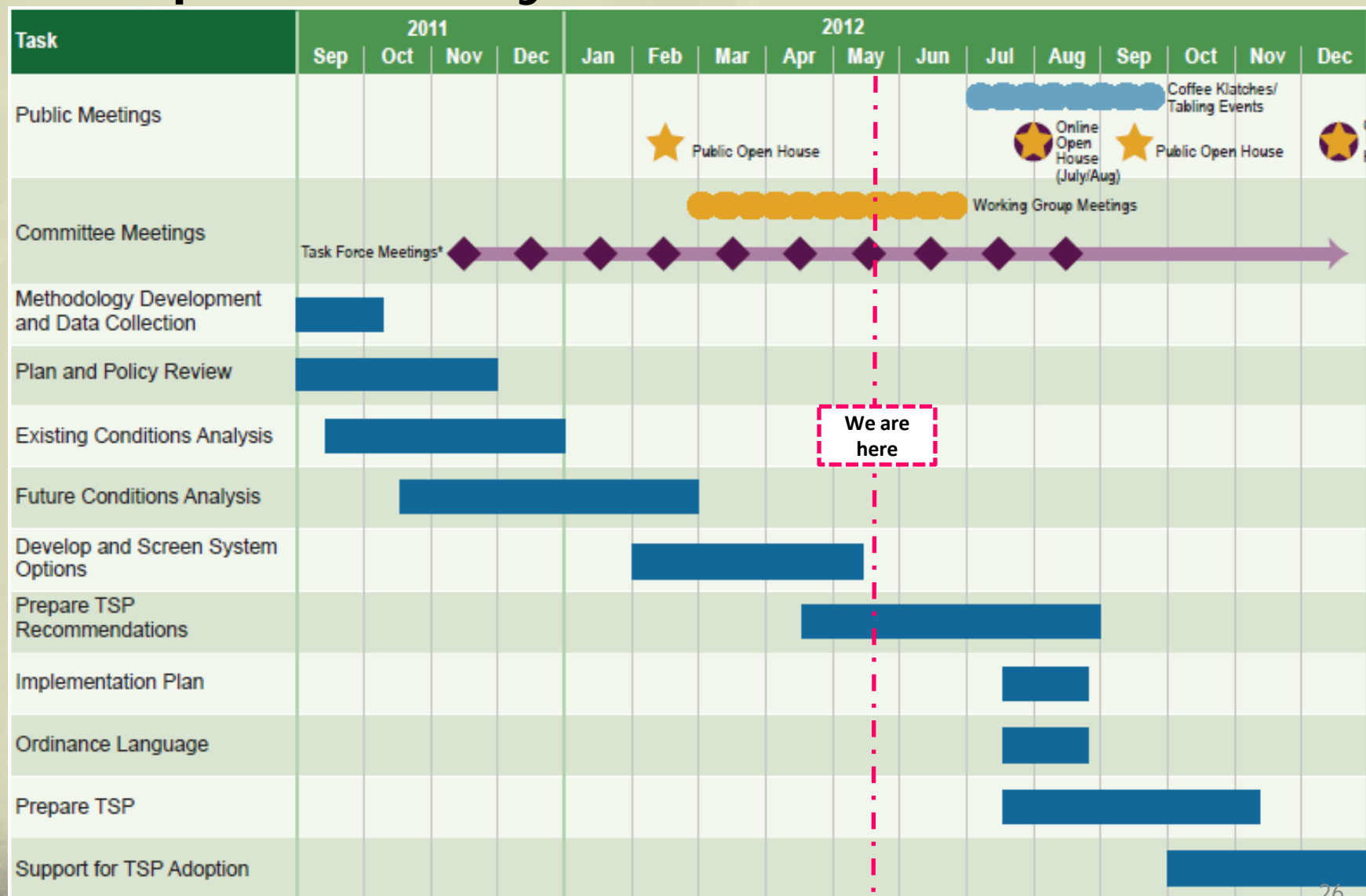
Third Round of Working Group Meetings

No.	Working Group	Date
1.	Downtown	June 4
2.	Transit	June 5
3.	Bicycle and Pedestrian	June 6
4.	Industrial and Freight	June 13 (lunchtime)
5.	Neighborhood Livability	June 13 (evening)
6.	Major Corridors	June 14

Next Steps



Transportation System Plan Timeline





Thank You