



MEETING AGENDA

TRANSPORTATION TASK FORCE WORKING GROUP: Bicycle & Pedestrian June 6, 2012, 6:00 p.m.

**Tualatin Police Department Training Room
8650 SW Tualatin Road**

-
1. **WELCOME AND CALL TO ORDER**
 - A. Introductions
 - B. Background: Where We Are in the Process
 - C. Purpose of Meeting Today
 1. Review Initial Project Evaluation
 2. Suggest projects that should not move forward in the TSP
 3. Prioritize the most important projects
 2. **PRESENTATION**
 - A. Evaluation Results
 - B. Questions
 3. **SMALL GROUP DISCUSSION**
 - A. Discuss Evaluation Results
 - B. Projects to keep, let go, study further
 - C. Identify most beneficial projects, suggest projects to remove
 4. **CLOSING**
 - A. Review Small Group Discussion Results
 5. **NEXT MEETINGS**
 - A. Working Group: Industrial & Freight - June 13
 - B. Working Group: Neighborhood Livability - June 13
 - C. Working Group: Major Corridors & Intersections - June 14
 - D. Working Group: Transit - June 28

Transportation Task Force Working Group

2.

Meeting

Date:

06/06/2012

Information

Attachments

Prelim Eval Results

Tualatin Transportation System Plan, Preliminary Evaluation Results

PREPARED FOR: Tualatin Transportation Task Force

COPY TO: Kaaren Hofmann, City of Tualatin
Alice Rouyer, City of Tualatin
Dayna Webb, City of Tualatin

PREPARED BY: Terra Lingley, CH2M HILL
Theresa Carr, CH2M HILL
Darren Hippenstiel, CH2M HILL
Kate Lyman, CH2M HILL
Alan Snook, DKS Associates

DATE: May 25, 2012

This memorandum summarizes the preliminary evaluation results of the Tualatin Transportation System Plan (TSP)'s feasible project ideas. It presents both the methodology used to perform the evaluation and the evaluation summary at a project goal level. Maps identifying the location of each project idea and next steps are also included.

The TSP's technical team reviewed each of the projects identified as feasible against a set of evaluation criteria. The evaluation criteria, nested into each project objective, and further nested within each project goal category, are quantitative or qualitative measures that help the team identify how well the project idea is at meeting the TSP's goals and objectives. These goals and objectives were created by the Transportation Task Force (TTF) and reviewed by the community, and accepted by City Council. There are seven goal categories:

1. Access/Mobility
2. Safety
3. Vibrant Community
4. Economy
5. Health/Environment
6. Equity
7. Ability to be Implemented

Ratings

Each project was evaluated against all evaluation criteria by one or more members of the project team, and reviewed by the project management team as a group. The scale used for the evaluation is as follows:

Evaluation Results Rating Scale

Rating	Description
●	The project idea addresses the criterion and/or makes substantial improvements in the criteria category
◐	The project idea partially addresses the criterion and/or makes some improvements in the criteria category
○	The project idea does not support the intent of and/or negatively impacts the criteria category
N/A	The project idea neither meets nor does not meet intent of criterion. The project idea has no effect, or criterion does not apply

The results of the preliminary evaluation are included by Working Group topic, which are:

- Bicycle and Pedestrian
- Downtown
- Industrial and Freight
- Major Corridors and Intersections
- Neighborhood Livability
- Transit

Scores for each individual project idea are included at the end of this memo. Cells highlighted in yellow indicate that the team recommends further analysis of this concept as part of a larger corridor or interchange assessment. Many project ideas spanned more than one topic area. Although concepts were reviewed only once, the evaluation results are reported under each Working Group topic area.

How will this Information be Used?

The focus of the May 24th TTF meeting will be to review the preliminary evaluation results. These will also be used as a basis for the third round of Working Group meetings, held in the first half of June. This next round of Working Group meetings will discuss the evaluations, discuss how well project ideas address identified needs and deficiencies, and prepare preliminary recommendations for the TSP. These project ideas will be organized into three categories:

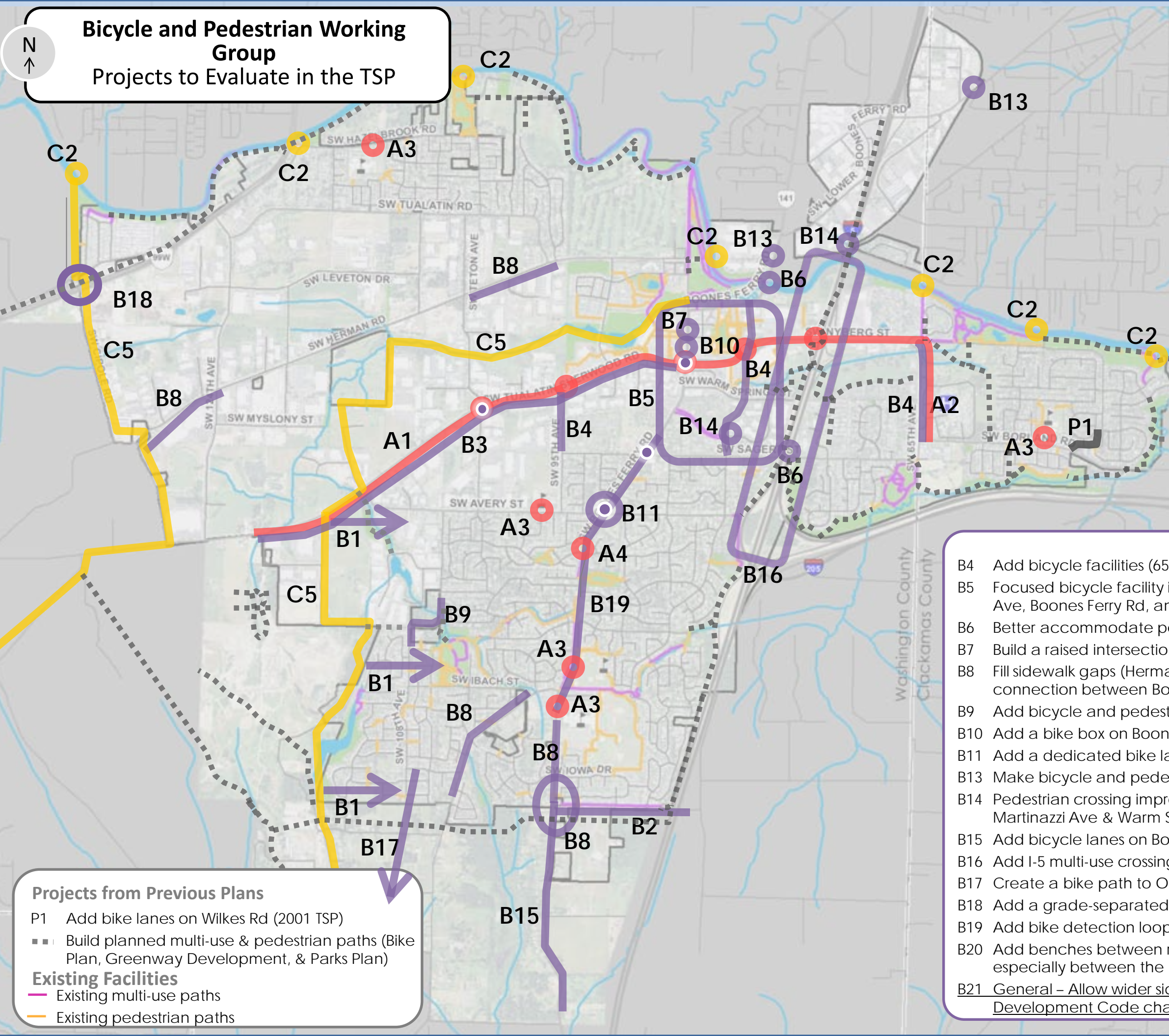
1. What projects completely make sense and should become part of the TSP?
2. What projects do not make sense, and should not become a part of the TSP?
3. What projects need to be considered more, either in relation to different alternatives to address one problem, or in the context of how a corridor or segment operates as a whole.

The June 21 TTF meeting will review the developments from this third round of Working Group meetings, and preliminary recommendations will be forwarded to the community as a whole for review over the summer months. At this time the third category of ideas will be refined in more detail, with additional traffic or engineering analysis, and discussed with staff, reviewing agencies, and the community.

Bicycle and Pedestrian Preliminary Project Evaluation

	ID	Project Idea	Access / Mobility	Safety	Vibrant Community	Economy	Health / Environment	Equity	Ability to be Implemented
Safety	A1	Add pedestrian crossing treatments at key locations on Tualatin-Sherwood and Nyberg	●	●	●	●	●	●	●
	A2	Multi-use path on 65th Ave between Borland and Nyberg	●	●	●	●	●	●	●
	A3	Improve visibility and safety near schools at crosswalks	●	●	●	○	●	●	●
	A4	Improve visibility at crosswalk at Siletz Dr and Boones Ferry Rd	○	●	○	○	●	●	●
	A6	Provide wayfinding for Safe Routes to School	●	●	●	●	●	○	●
Facility	B1	Connect Tonquin trail with neighborhoods	●	●	●	●	●	●	●
	B2	Add sidewalks and bicycle lanes on Norwood Rd	●	●	●	●	●	●	●
	B3	Improve Tualatin-Sherwood Rd for bicyclists and pedestrians	●	●	N/A	●	●	●	○
	B4	Add bicycle facilities near the hospital, 95th and Martinazzi	●	●	●	●	●	●	●
	B5	Improve bicycle facility treatments in downtown core	●	●	●	●	●	●	●
	B6	Better accommodate pedestrians on the bridges	●	●	●	●	●	●	○
	B7	Build a raised intersection at Seneca and Nyberg	○	○	●	○	●	●	○
	B8	Fill sidewalk gaps on Grahams Ferry, Boones Ferry, and Herman	●	●	●	N/A	●	●	●

	ID	Project Idea	Access / Mobility	Safety	Vibrant Community	Economy	Health / Environment	Equity	Ability to be Implemented
Facility, cont.	B9	Add bicycle and pedestrian facilities on 105th Ave, Blake St, and 108th Ave	◐	●	◐	◐	●	◐	◐
	B10	Add bike box on Boones Ferry Rd near the Sweek House	○	◐	◐	○	◐	○	●
	B11	Add dedicated bike lane through Avery and Boones Ferry intersection	◐	◐	N/A	N/A	◐	◐	◐
	B13	Improve bicycle and pedestrian treatments at railroad crossings	◐	●	N/A	N/A	●	◐	○
	<u>B14</u>	Improve pedestrian crossing along Boones Ferry Rd	◐	◐	●	●	◐	N/A	●
	<u>B15</u>	Add bicycle lanes on Boones Ferry Rd to Day Rd	◐	●	●	N/A	●	●	◐
	B16	Add I-5 multi-use crossing – connect to planned and existing multi-use paths	●	○	●	●	◐	◐	◐
	B17	Create a bike path to Old Town Sherwood as this area develops	●	●	◐	◐	◐	●	○
	B18	Add a grade-separated crossing over 99W	◐	●	○	○	◐	○	○
	B19	Add bike detection loops at major intersections	◐	N/A	◐	N/A	◐	◐	●
	B20	Add benches for walkers throughout the city	N/A	N/A	●	N/A	●	●	●
Trail	B21	Allow wider sidewalks for strolling and outdoor cafes	N/A	◐	●	●	◐	N/A	◐
	C2	Build pedestrian and bicycle bridges over the Tualatin River	◐	●	●	◐	●	◐	○
	C4	Create a bicycle boulevard system connecting major areas	◐	●	◐	◐	●	●	◐
	C5	Build the Tonquin Trail	●	●	●	●	●	●	●



Bicycle and Pedestrian Working Group
Projects to Evaluate in the TSP

- Safety-Focused Ideas**
- A1 Add pedestrian-focused crossing improvements at key crossings of Tualatin-Sherwood Rd & Nyberg St
 - A2 Multi-use path between Borland Rd and Nyberg Ln
 - A3 Improve visibility and safety near schools at crosswalks
 - A4 Improve visibility at crosswalk at Siletz Dr & Boones Ferry Rd
 - A6 General – Provide wayfinding signs for Safe Routes to School

- Trail-Focused Ideas**
- C2 Build bridges for pedestrian and bicycle access over the Tualatin River
 - C4 Create a system of bicycle boulevards (Bikeways on lower -volume streets) connecting all major areas including residential areas (Not on map)
 - C5 Tonquin Trail

- Facility-Focused Ideas**
- B1 Connect Tonquin trail with neighborhoods
 - B2 Add sidewalks & bicycle lanes on Norwood Rd
 - B3 Improve Tualatin-Sherwood Rd to make it more bicycle and pedestrian friendly

- Projects from Previous Plans**
- P1 Add bike lanes on Wilkes Rd (2001 TSP)
 - Build planned multi-use & pedestrian paths (Bike Plan, Greenway Development, & Parks Plan)
- Existing Facilities**
- Existing multi-use paths
 - Existing pedestrian paths

- B4 Add bicycle facilities (65th Ave near the hospital, 95th Ave and Martinazzi Ave)
- B5 Focused bicycle facility improvements in heart of downtown, including Martinazzi Ave, Boones Ferry Rd, and Tualatin-Sherwood Rd
- B6 Better accommodate pedestrians on the bridges
- B7 Build a raised intersection at Seneca and Nyberg (crossing Boones Ferry Rd)
- B8 Fill sidewalk gaps (Herman Rd, Grahams Ferry Rd, Boones Ferry Rd, and the connection between Boones Ferry Rd and Norwood Rd)
- B9 Add bicycle and pedestrian facilities on 105th Ave, Blake St, 108th Ave
- B10 Add a bike box on Boones Ferry Rd near the Sweek House
- B11 Add a dedicated bike lane through intersection at Avery St & Boones Ferry Rd
- B13 Make bicycle and pedestrian facility improvements at railroad crossings
- B14 Pedestrian crossing improvements (Tualatin View Apartments, Boones Ferry Rd; Martinazzi Ave & Warm Springs St)
- B15 Add bicycle lanes on Boones Ferry Rd to Day Rd
- B16 Add I-5 multi-use crossing – connect to existing multi-use paths
- B17 Create a bike path to Old Town Sherwood as this area develops
- B18 Add a grade-separated crossing over 99W
- B19 Add bike detection loops at major intersections (indicated by ●)
- B20 Add benches between residential and commercial areas throughout the city, especially between the Heritage Center and Haggens (not on map)
- B21 General – Allow wider sidewalks for strolling and outdoor cafes. (Potential Tualatin Development Code change)